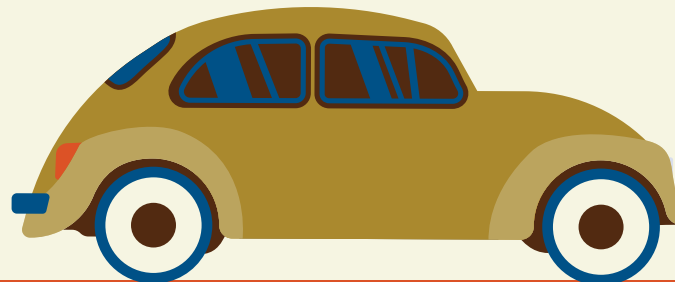


HOW TO NAVIGATE A ROUNDABOUT



ALL VEHICLES MUST YIELD TO PEDESTRIANS WHO ARE IN THE ROUNDABOUT



1. SLOW DOWN

when approaching a roundabout, and be prepared to stop.



2. LOOK TO THE LEFT

as traffic flows in a counter-clockwise direction. Yield to ALL vehicles already in the roundabout, they have the right of way.



3. STAY IN YOUR LANE

when entering a roundabout. Merge into the traffic flow when it is safe.



4. TRAVEL AROUND THE CIRCLE

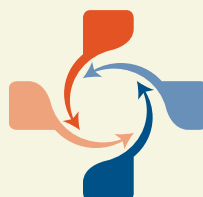
in a counterclock-wise direction until you reach your desired street. Use your right-turn signal to exit the roundabout.

LEARN MORE

<http://bit.ly/MTRoundabouts>



Van Buren Street
INTERCHANGE



VISION ZERO
zero deaths · zero serious injuries
MONTANA DEPARTMENT
OF TRANSPORTATION