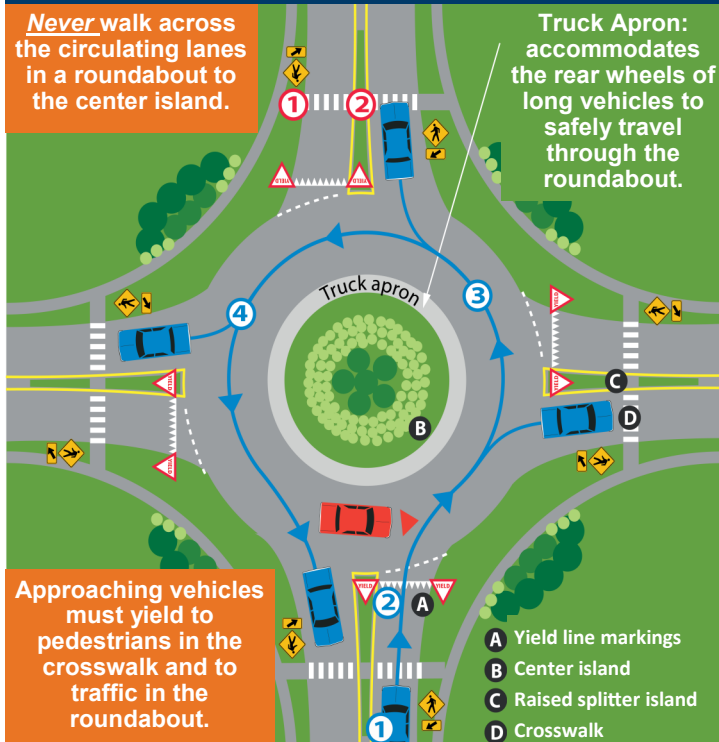


Driving with Roundabouts

Single Lane Roundabouts

Never walk across the circulating lanes in a roundabout to the center island.

Truck Apron: accommodates the rear wheels of long vehicles to safely travel through the roundabout.




Approaching vehicles must yield to pedestrians in the crosswalk and to traffic in the roundabout.


A Yield line markings
B Center island
C Raised splitter island
D Crosswalk

Image courtesy of Iowa Department of Transportation

1. **SLOW DOWN** when approaching a roundabout, and be prepared to stop.
2. **LOOK TO THE LEFT** as traffic flows in a counter-clockwise direction. Yield to **ALL** vehicles already in the roundabout. They have the right of way **no matter which lane they are traveling in.**
3. **STAY IN YOUR LANE** when entering a roundabout. Merge into the traffic flow when it is safe.
4. **TRAVEL AROUND THE CIRCLE** in a counterclockwise direction until you reach your desired street. Use your right-turn signal to exit the roundabout.

Other Vehicles

 **Large Vehicles** need more space when navigating roundabouts, and smaller vehicles should drop back to allow the larger vehicle to complete travel through the roundabout.

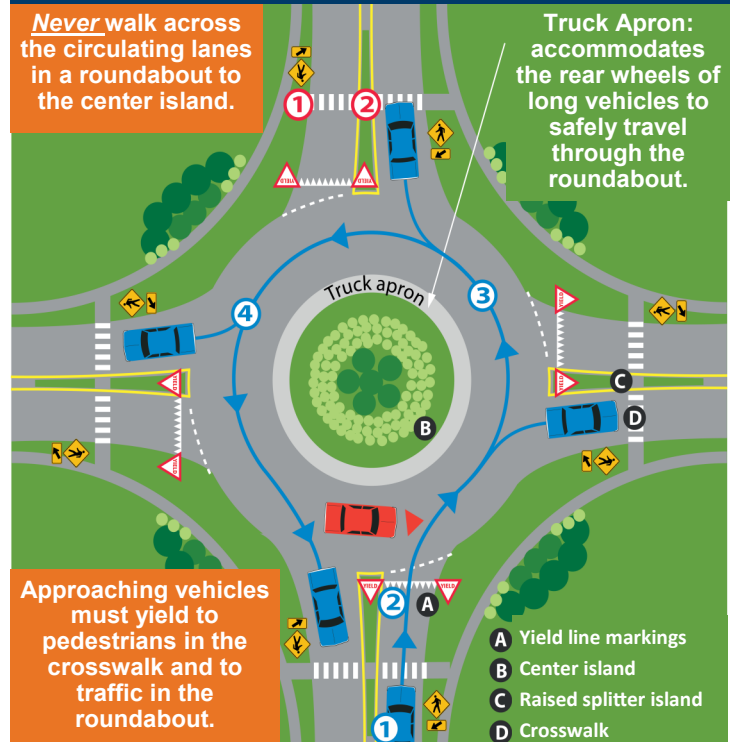
 If an **Emergency Vehicle** approaches, exit the roundabout immediately and then pull over.
Do not stop in the roundabout.

Driving with Roundabouts

Single Lane Roundabouts

Never walk across the circulating lanes in a roundabout to the center island.

Truck Apron: accommodates the rear wheels of long vehicles to safely travel through the roundabout.




Approaching vehicles must yield to pedestrians in the crosswalk and to traffic in the roundabout.


A Yield line markings
B Center island
C Raised splitter island
D Crosswalk

Image courtesy of Iowa Department of Transportation

1. **SLOW DOWN** when approaching a roundabout, and be prepared to stop.
2. **LOOK TO THE LEFT** as traffic flows in a counter-clockwise direction. Yield to **ALL** vehicles already in the roundabout. They have the right of way **no matter which lane they are traveling in.**
3. **STAY IN YOUR LANE** when entering a roundabout. Merge into the traffic flow when it is safe.
4. **TRAVEL AROUND THE CIRCLE** in a counterclockwise direction until you reach your desired street. Use your right-turn signal to exit the roundabout.

Other Vehicles

 **Large Vehicles** need more space when navigating roundabouts, and smaller vehicles should drop back to allow the larger vehicle to complete travel through the roundabout.

 If an **Emergency Vehicle** approaches, exit the roundabout immediately and then pull over.
Do not stop in the roundabout.

Bicycles and Pedestrians

Pedestrians must cross at designated crosswalks.

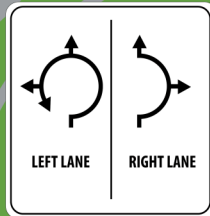
Bicyclists are encouraged to walk their bikes and use pedestrian crosswalks for safety. If you are comfortable riding in traffic, ride on the roadway while obeying the same traffic rules as motorized vehicles. Clearly signal your turning intentions.

Multi-Lane Roundabouts

MULTI-LANE ROUNDABOUTS follow the same guidelines as single lane roundabouts.

Truck Apron: accommodates the rear wheels of long vehicles to safely travel through the roundabout.

As with any intersection, select the lane you need to travel in based on your desired street destination.



Typical lane control sign

Image courtesy of Iowa Department of Transportation

Bicycles and Pedestrians

Pedestrians must cross at designated crosswalks.

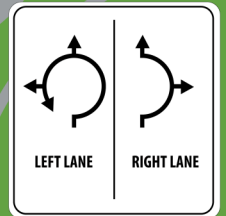
Bicyclists are encouraged to walk their bikes and use pedestrian crosswalks for safety. If you are comfortable riding in traffic, ride on the roadway while obeying the same traffic rules as motorized vehicles. Clearly signal your turning intentions.

Multi-Lane Roundabouts

MULTI-LANE ROUNDABOUTS follow the same guidelines as single lane roundabouts.

Truck Apron: accommodates the rear wheels of long vehicles to safely travel through the roundabout.

As with any intersection, select the lane you need to travel in based on your desired street destination.



Typical lane control sign

Image courtesy of Iowa Department of Transportation



VISION ZERO
zero deaths · zero serious injuries
MONTANA DEPARTMENT OF TRANSPORTATION

2701 Prospect Ave
PO Box 201001
Helena, MT 59620
406-444-6200

Visit: www.mdt.mt.gov

Follow Us:    

Moving towards zero deaths and zero serious injuries on Montana roads.

Alternative accessible formats of this document will be provided on request. Persons who need an alternative format should contact the Human Resources and Occupational Safety Division, Department of Transportation, 2701 Prospect Avenue., PO Box 201001, Helena, MT 59620. Telephone 406-444-9229. Those using a TTY may call 1(800)335-7592 or through the Montana Relay Service at 711

This document is printed at state expense. Information on the cost of producing this publication may be obtained by contacting the Department of Administration.



VISION ZERO
zero deaths · zero serious injuries
MONTANA DEPARTMENT OF TRANSPORTATION

2701 Prospect Ave
PO Box 201001
Helena, MT 59620
406-444-6200

Visit: www.mdt.mt.gov

Follow Us:    

Moving towards zero deaths and zero serious injuries on Montana roads.

Alternative accessible formats of this document will be provided on request. Persons who need an alternative format should contact the Human Resources and Occupational Safety Division, Department of Transportation, 2701 Prospect Avenue., PO Box 201001, Helena, MT 59620. Telephone 406-444-9229. Those using a TTY may call 1(800)335-7592 or through the Montana Relay Service at 711

This document is printed at state expense. Information on the cost of producing this publication may be obtained by contacting the Department of Administration.