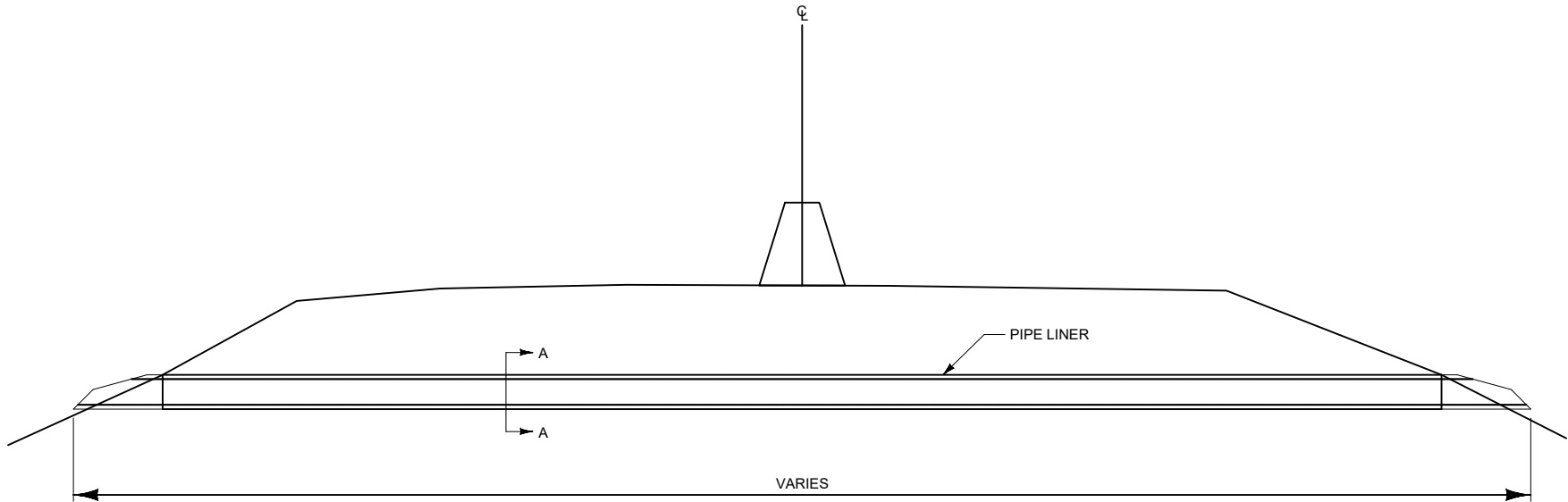
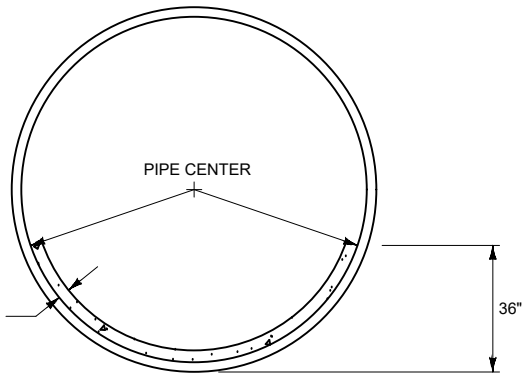


DETAIL

NO SCALE



ROADWAY CROSS SECTION

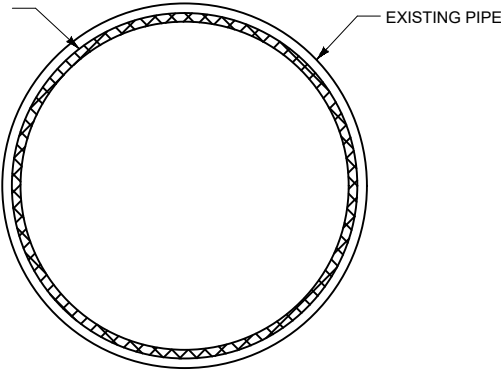


STATION 267+82
CULVERT LINING

LINER THICKNESS MEASURED FROM
CORRUGATION CREST (T)

NOTE:
EXISTING CULVERT HAS TWO BARRELS. APPLY
CULVERT LINING TO BOTH BARRELS AS SHOWN ABOVE.

PROVIDE LINING
FOR FULL DIAMETER



SECTION A-A

| PIPE REHABILITATION OPTIONS | | | | | | |
|-----------------------------|--------------|---------|--|-------------------------------------|-----------------------------|---|
| STATION | linear feet* | | LINING OPTIONS | inches | C.Y. | NOTES |
| | EX. CSP DR | NEW SCP | | THICKNESS OF LINER ² (T) | QUANTITY OF LINING MATERIAL | |
| 267+82 | 528 | | INSERT NEW STEEL PIPE INTO EXISTING PIPE ¹ INVERT PAVING | 0.75 3.6 | NA 160.3 | USE STEEL PIPE WITH INSIDE DIAMETER OF 101 INCHES MISCELLANEOUS ITEMS C - LS |

* QUANTITIES FOR INFORMATION ONLY
¹ STEEL LINING OPTION IS A HALF DIAMETER LINER. PLACE INVERT OF LINER AT THE INVERT OF THE EXISTING PIPE.
² THICKNESS OF LINER MAY DIFFER BASED ON MANUFACTURER. CONTRACTOR MUST FOLLOW MANUFACTURERS REQUIREMENTS. PROPOSED LINER MATERIAL AND THICKNESS MUST BE APPROVED BY ENGINEER.

| PIPE REHABILITATION OPTIONS | | | | | | |
|-----------------------------|--------------|---------|--|------------------------|-----------------------------|--|
| STATION | linear feet* | | LINING OPTIONS | inches | C.Y. | NOTES |
| | EX. CSP DR | NEW SCP | | THICKNESS OF LINER (T) | QUANTITY OF LINING MATERIAL | |
| 139+15 | 166 | 178 | INSTALL NEW SCP INSERT NEW STEEL PIPE INTO EXISTING PIPE | NA 0.5 | NA NA | USE STEEL PIPE WITH INSIDE DIAMETER OF 44 INCHES MISCELLANEOUS ITEMS A - LS |
| 180+54 | 340 | | INSERT NEW STEEL PIPE INTO EXISTING PIPE CURED-IN-PLACE PIPE (CIPP) | 0.5 2 | NA 0.0 | USE STEEL PIPE WITH INSIDE DIAMETER OF 44 INCHES MISCELLANEOUS ITEMS B - LS |
| 428+71 | 194 | | INSERT NEW STEEL PIPE INTO EXISTING PIPE CURED-IN-PLACE PIPE (CIPP) | 0.5 2 | NA 0.0 | USE STEEL PIPE WITH INSIDE DIAMETER OF 44 INCHES MISCELLANEOUS ITEMS D - LS |

* QUANTITIES FOR INFORMATION ONLY

SHEET NO.

RD-55

CULVERT LINING DETAIL

LOOKOUT PASS - EAST

MINERAL COUNTY

SSS-NHFP-IM-NHPB 90-1(251)0

9487001

PROJECT NAME

COUNTY

PROJECT ID

UPN

CHECKED BY LFISCHER

REVIEWED BY MARSHALL

DESIGNED BY BUJOHNSON

9487000RDDDETZ03.DWG