

With the migration to Enhanced workspace, users will need to be aware of the seed file they use to create drawings for projects.

The Global Origin & Resolution units for the new Enhanced seed files are being adjusted to support State Plane three-dimensional design modeling along with Annotation scale for cells and custom linestyles used for plansets. Design files should not be used across workspaces and would need to be converted if doing so.

To check the resolution units of the active file goto > Settings > DesignFile > then select the working units option bottom left.

**Note: Do not change this setting, changing this setting will not automatically convert the file for the intended workspace.** A separate document will be made available for this conversion process and must only be executed when necessary. In this scenario, please contact MDT CADD support for assistance:

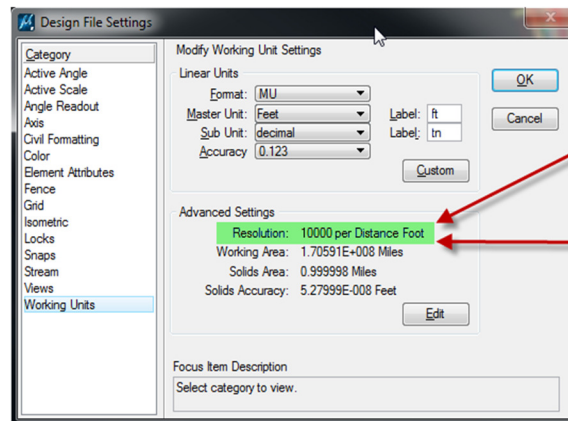
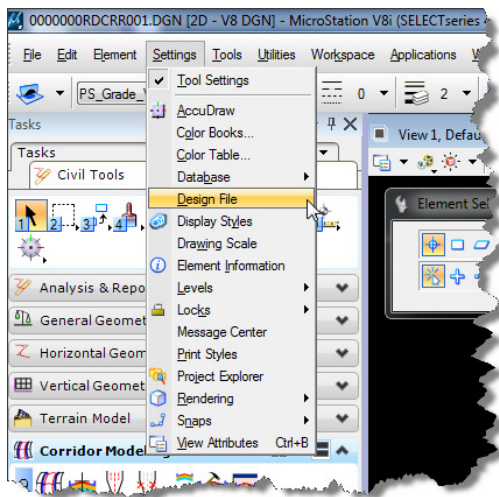
**John (JJ) Walsh:** 406-494-9615

**Brandon Anderson:** 406-444-6210

**John Pirre:** 406-444-6243

**Legacy workspace:** resolution units = 1000

**Enhanced workspace:** resolution units = 10000



Legacy = 1000

Enhanced = 10000

Table 1 contains a list of the current seed files for each respective workspace. These files are available on MDT's FTP site at: <ftp://ftp.mdt.mt.gov/caddstd/>. As in the past, MDT strongly encourages Consultants to download the latest CADDSTD files weekly to ensure they are using the latest information. Additional files will be made available by the end of April 2017 that will allow use of GEOPAK Criteria design tools in the Enhanced workspace.

**Table 1**

\seed\ MDT-Seed2D-Imperial.dgn	MDT Standard Seed Files
<b>Enhanced Workspace Seed Files (English)</b>	
\seed\ MDT-Seed2D-Imperial.dgn	English Georeference2D Map File (State Plane) USED FOR PLAN SHEET PRODUCTION
\seed\ MDT-Seed2D-3D-Imperial.dgn	English Georeference2D-3D Map File (State Plane) USED FOR 3D MODELING
\seed\ MDT-Seed3D-Imperial.dgn	English Georeference3D Map File (State Plane) USED BY SURVEY
<b>Legacy Workspace Seed Files (English)</b>	
\seed\english2d.dgn	English 2D Map File (State Plane)
\seed\english3d.dgn	English 3D Map File(State Plane)
\seed\english2dxs.dgn	English 2D Working XS File
<b>Legacy Workspace Seed Files (Metric)</b>	
\seed\metric.dgn	Metric 2D Map File
\seed\metric2d.dgn	Metric 2D Map File (State Plane)
\seed\metric3d.dgn	Metric 3D Map File(State Plane)