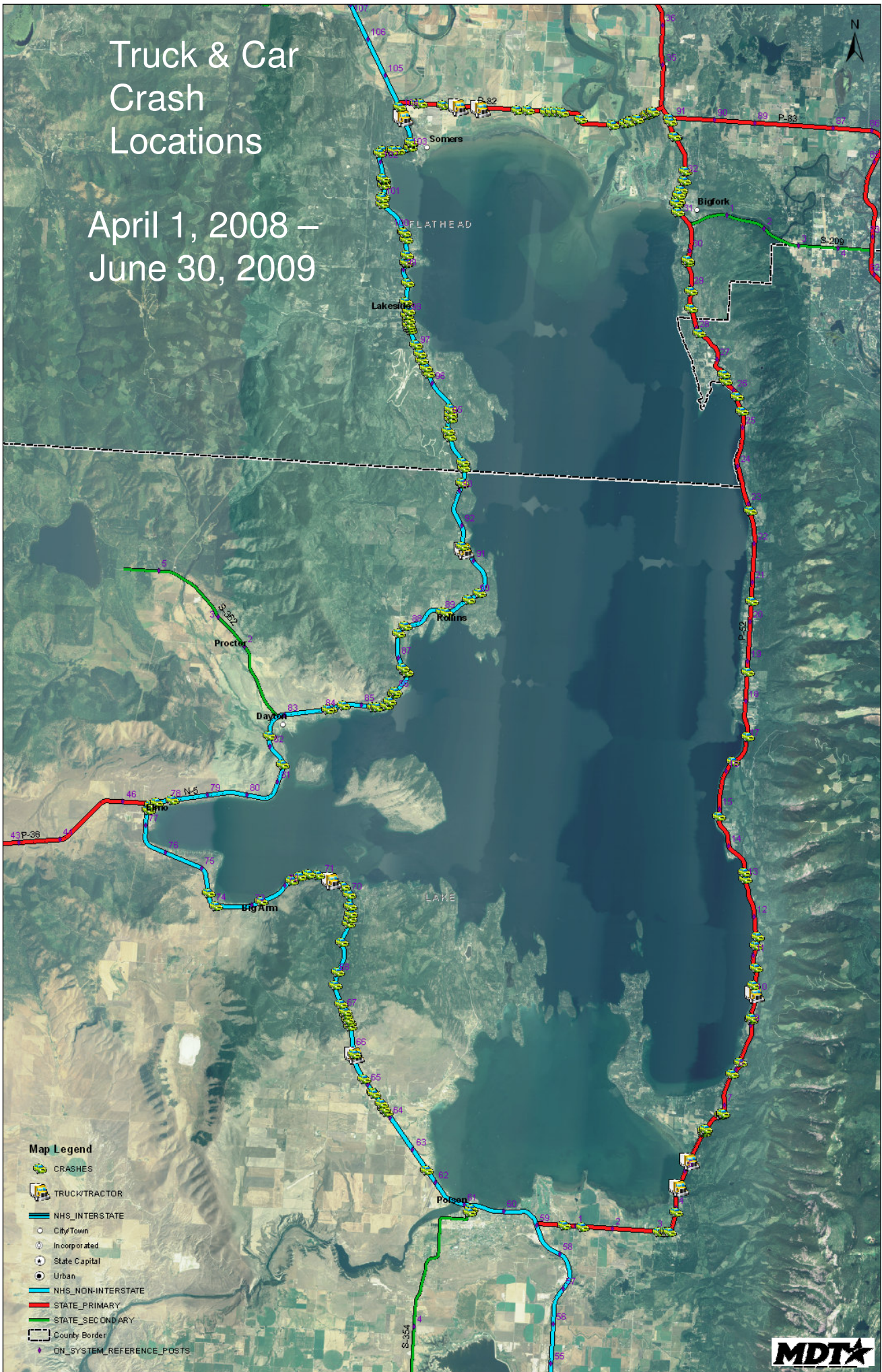
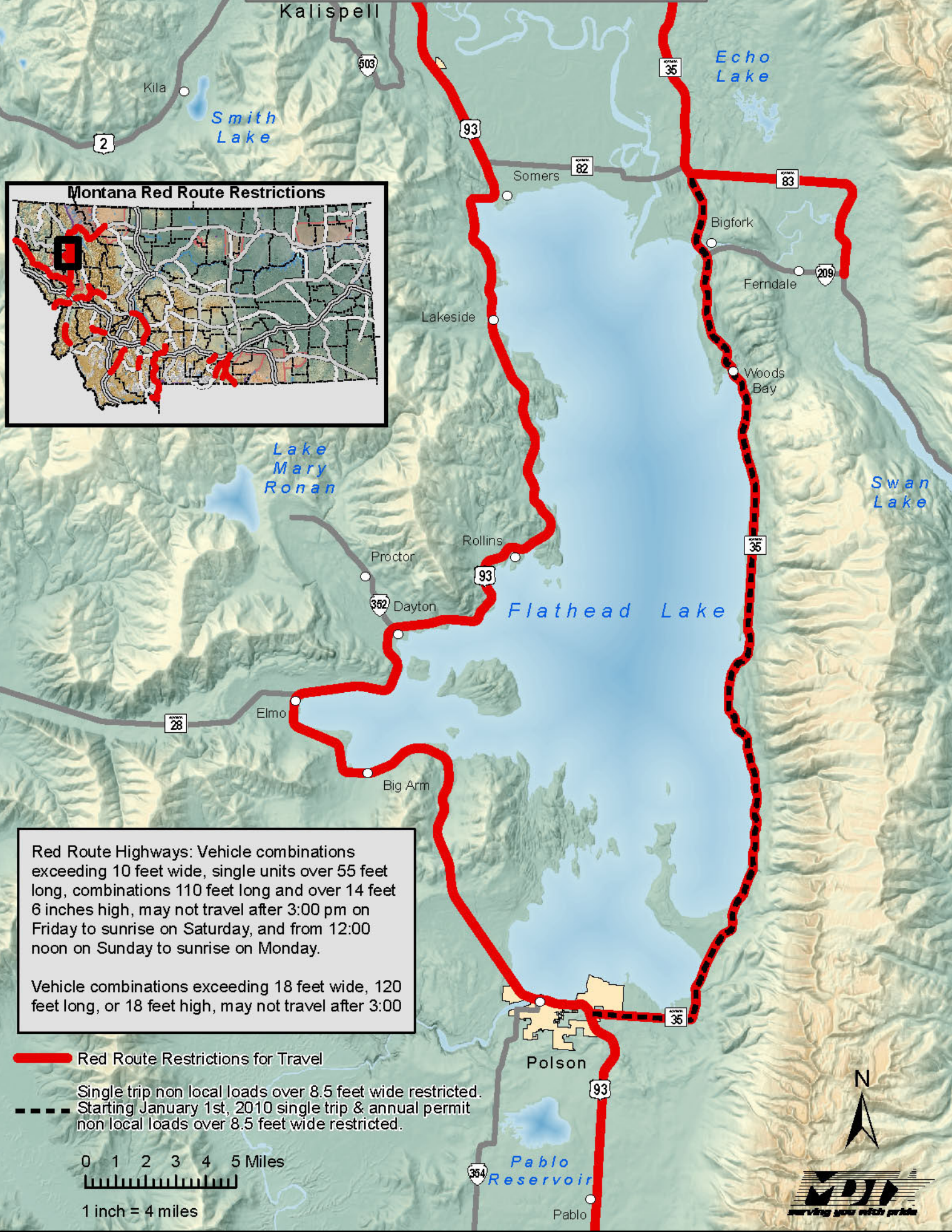
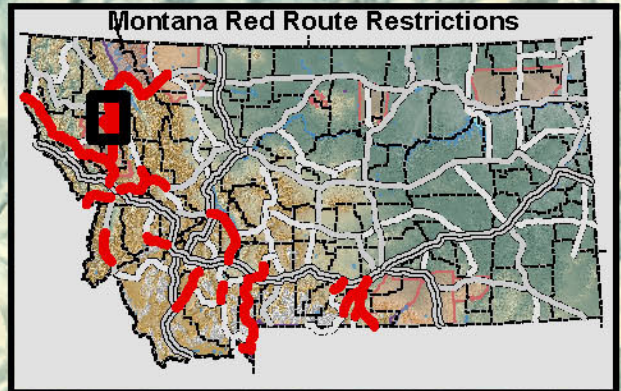


Truck & Car Crash Locations

April 1, 2008 –
June 30, 2009



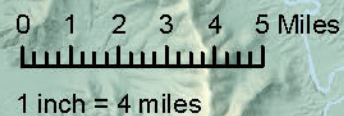
Existing Truck Restrictions

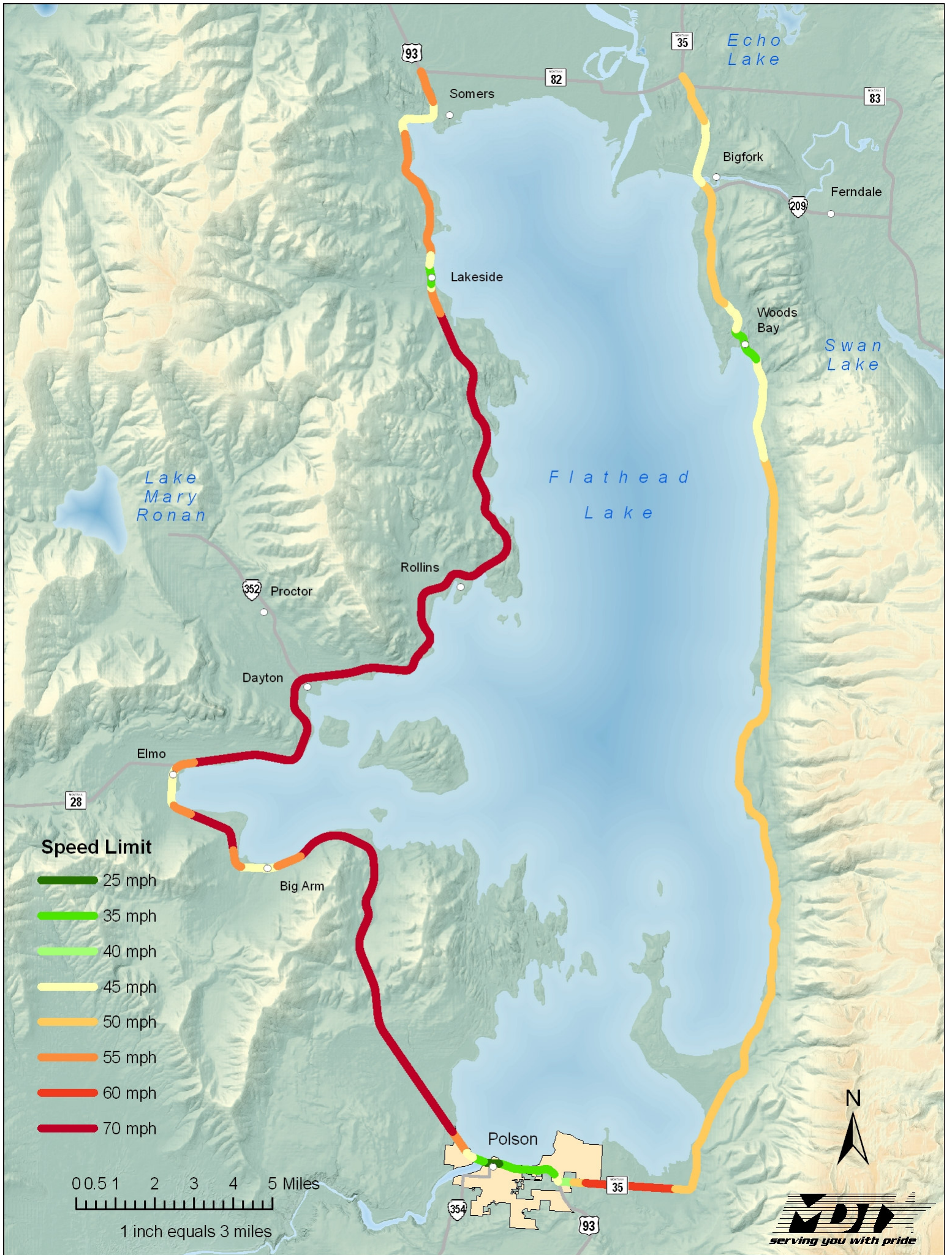


Red Route Highways: Vehicle combinations exceeding 10 feet wide, single units over 55 feet long, combinations 110 feet long and over 14 feet 6 inches high, may not travel after 3:00 pm on Friday to sunrise on Saturday, and from 12:00 noon on Sunday to sunrise on Monday.

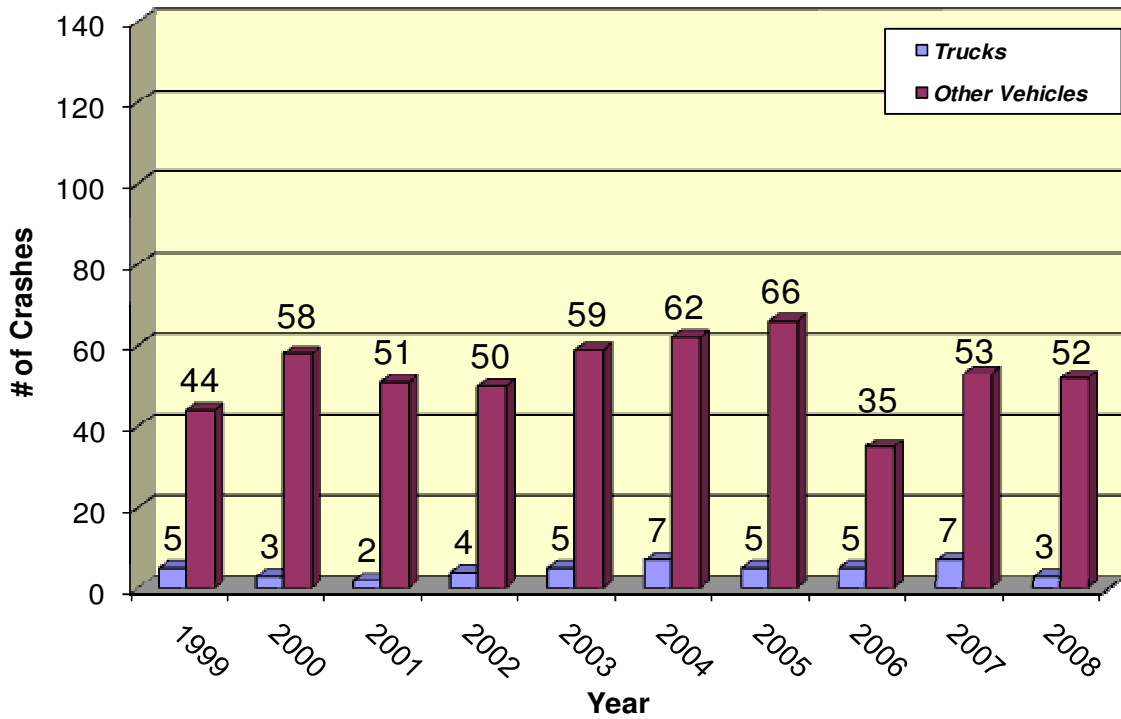
Vehicle combinations exceeding 18 feet wide, 120 feet long, or 18 feet high, may not travel after 3:00

- Red Route Restrictions for Travel
- Single trip non local loads over 8.5 feet wide restricted. Starting January 1st, 2010 single trip & annual permit non local loads over 8.5 feet wide restricted.





MT 35 Polson to Big Fork
Crash Comparison Between Trucks & Other Vehicles



US 93 Polson to MT 82 (Somers)
Crash comparison Between Trucks & Other Vehicles

