

MISSOULA URBAN AREA

MISSOULA COUNTY
Sheet 3A of 4 County Map Sheets
and 1 Urban Area Map

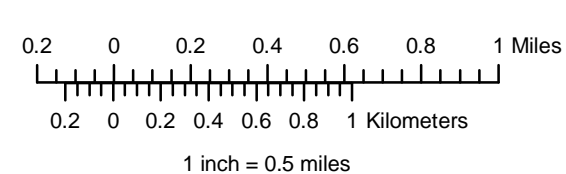
* Off system departmental designations are preceded by L-32, for routes outside city limits, unless labeled otherwise.



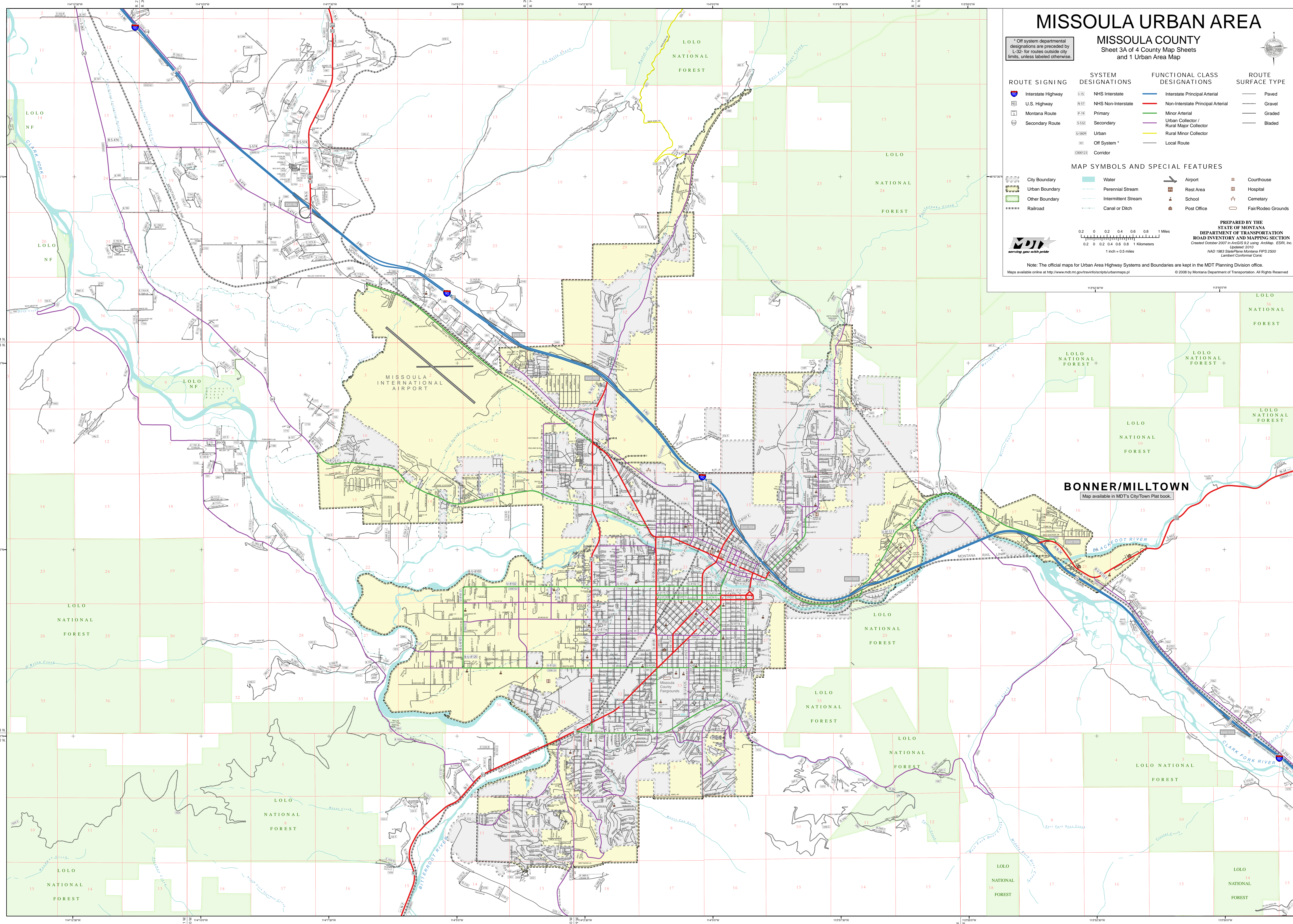
ROUTE SIGNING	SYSTEM DESIGNATIONS	FUNCTIONAL CLASS DESIGNATIONS	ROUTE SURFACE TYPE
Interstate Highway	NHS Interstate	Interstate Principal Arterial	Paved
U.S. Highway	NHS Non-Interstate	Non-Interstate Principal Arterial	Gravel
Montana Route	Primary	Minor Arterial	Graded
Secondary Route	Secondary	Urban Collector / Rural Major Collector	Bladed
	Urban	Rural Minor Collector	
	Off System *	Local Route	
	Corridor		

MAP SYMBOLS AND SPECIAL FEATURES

City Boundary	Water	Airport	Courthouse
Urban Boundary	Perennial Stream	Rest Area	Hospital
Other Boundary	Intermittent Stream	School	Cemetery
Railroad	Canal or Ditch	Post Office	Fair/Rodeo Grounds



PREPARED BY THE STATE OF MONTANA DEPARTMENT OF TRANSPORTATION ROAD INVENTORY AND MAPPING SECTION
Created October 2007 in ArcGIS 9.2 using ArcMap, ESRI, Inc. Updated: 2010
NAD 1983 StatePlane Montana FIPS 2500 Lambert Conformal Conic
© 2008 by Montana Department of Transportation. All Rights Reserved.



BONNER/MILLTOWN
Map available in MDT's City/Town Plat book.