

TOWNSEND

Map Legend

System Designations

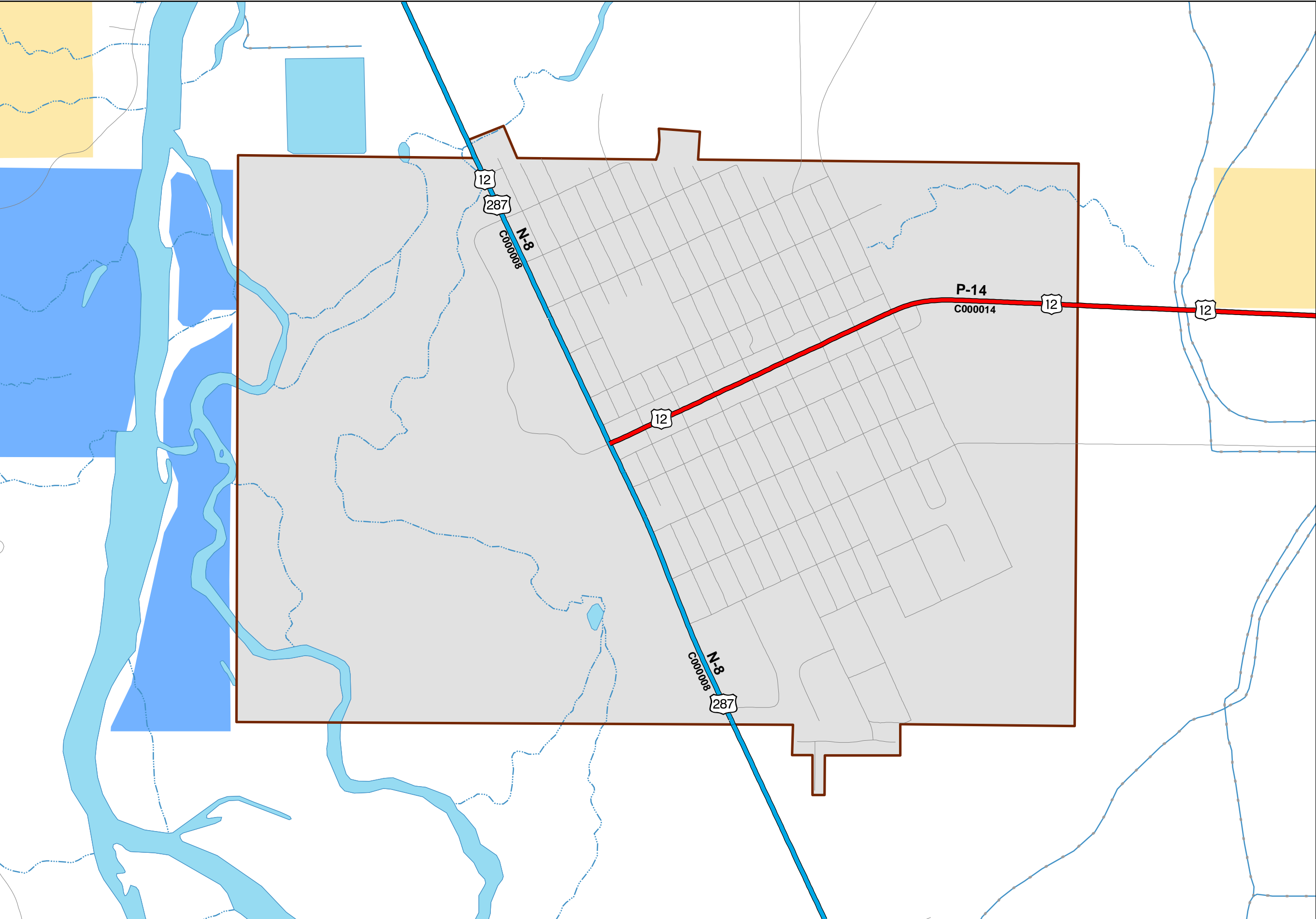
- NHS Interstate
- NHS Non-Interstate
- Primary
- Secondary
- Urban
- State Highway (State Maintained)
- Local Route

Route Numbers

- Interstate
- U.S.
- Montana
- Secondary

Boundaries

- Bureau of Land Management
- Fish Wildlife and Parks
- National Forest Service
- National Monument Area
- National Park Service
- Reservation
- State Forest
- State Land
- State Park
- US Fish Wildlife Service
- Wilderness Area
- City
- Urban



PREPARED BY THE
STATE OF MONTANA
DEPARTMENT OF TRANSPORTATION
ROAD INVENTORY AND MAPPING SECTION
Created January 2012 in ArcGIS 10 using ArcMap, ESRI, Inc.
NAD 1983 StatePlane Montana FIPS 2500
Lambert Conformal Conic

