

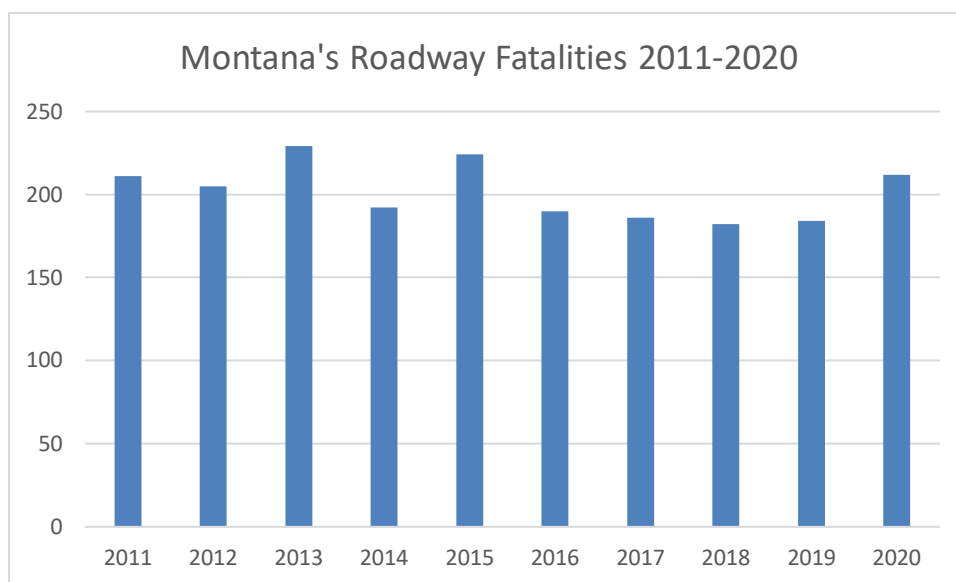
2020 Traffic Safety Factsheet

2020 Montana Roadway Crash Fatalities

- 212 fatalities in 189 crashes
- 132 vehicle occupants
- 108 unrestrained vehicle occupants
- 123 people attributed to impaired driver involvement
- 17 non motorists
- 29 motorcyclists
- 90 people in nighttime crashes
- 105 people in June, July, August, and September crashes

2011-2020 Montana Roadway Crash Fatalities

- 2015 fatalities in 1827 crashes
- 1548 vehicle occupants
- 1016 unrestrained vehicle occupants
- 1227 people attributed to impaired driver involvement
- 159 non motorists
- 237 motorcyclists
- 757 people in nighttime crashes
- 868 people in June, July, August, and September crashes



2020 Unrestrained Vehicle Occupant Fatalities

- 108 or 82% of vehicle occupant fatalities
- 86 vehicle occupants ages 14-54
- 84 unrestrained vehicle occupants in single vehicle crashes
- 73 ejected vehicle occupants
- 67 ejected unrestrained vehicle occupants

2011-2020 Unrestrained Vehicle Occupant Fatalities

- 999 or 65% of vehicle occupants
- 556 vehicle occupants ages 14-54
- 760 unrestrained vehicle occupants in single vehicle crashes
- 663 ejected vehicle occupants
- 619 unrestrained vehicle occupants

