

# WELCOME



**Gore Hill**  
INTERCHANGE  
EXIT 277



**VISION ZERO**  
zero deaths · zero serious injuries

MONTANA DEPARTMENT  
OF TRANSPORTATION

**Thank you for joining the Montana Department of Transportation for the Gore Hill Interchange Project online presentation.**

**This presentation will:**

- Provide an overview of the project
- Present the project schedule
- Describe the planned improvements
- Talk about the next steps in the development process

# PROJECT TEAM



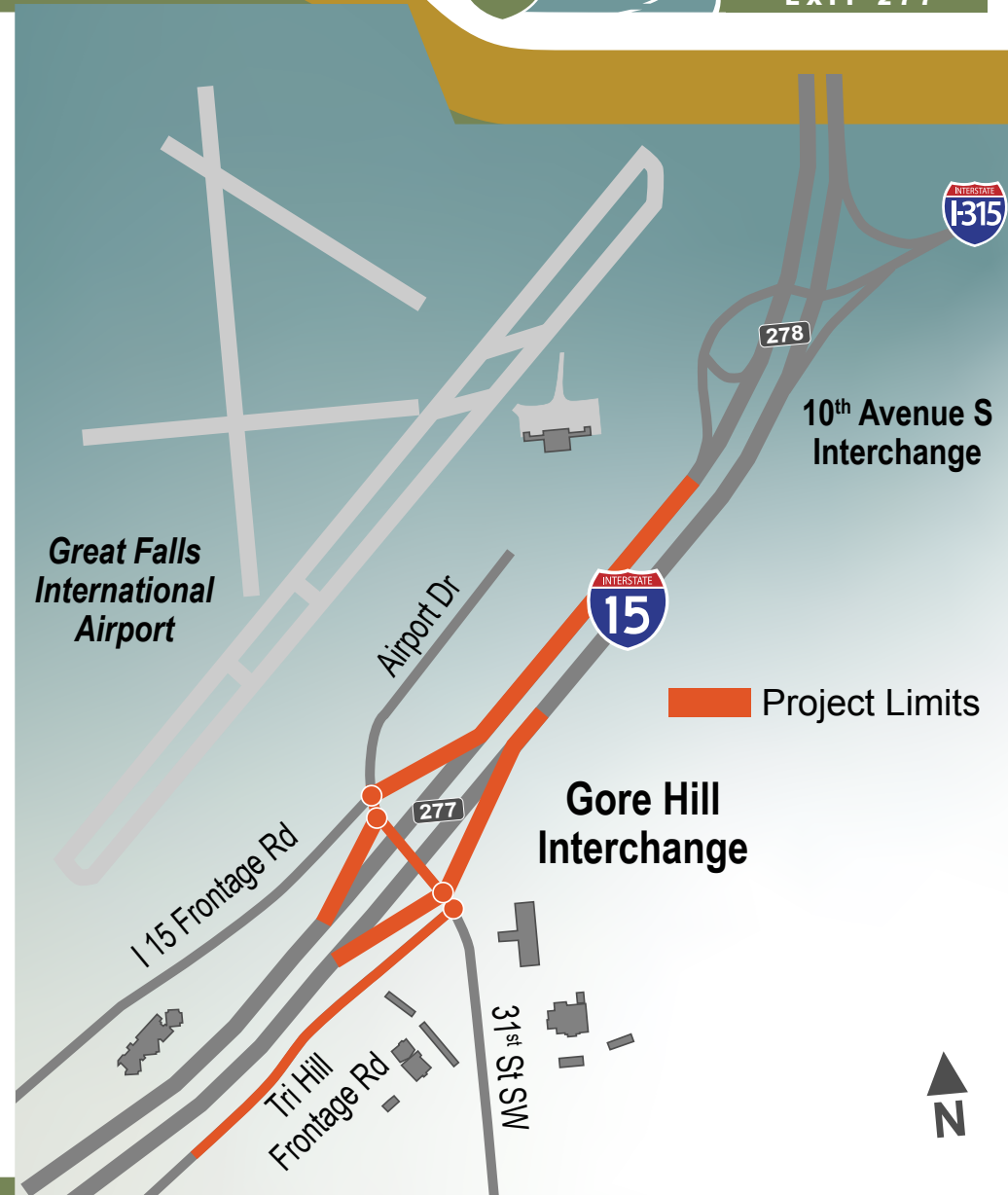
# PROJECT DESCRIPTION



The Montana Department of Transportation is developing improvements to the Interstate 15 Gore Hill Interchange (Exit 277) in Great Falls.

The project will:

- improve safety
- reduce delays
- improve traffic flow
- improve pedestrian/bicycle accessibility



# PROJECT BACKGROUND



**In 2015, the *I-15 Gore Hill to Emerson Junction Corridor Planning Study* identified the Gore Hill Interchange as an area of concern for the community.**

**In 2018, the City of Great Falls further outlined these concerns:**

- The Gore Hill Interchange handles a significant amount of traffic.
- The intersections are difficult to use for large trucks and commercial vehicles.
- The intersections are too close to each other causing congestion in the area.
- The short distance between the 10<sup>th</sup> Avenue South and Gore Hill interchanges makes merging onto I 15 difficult.

# PROJECT SCHEDULE



<b>2015</b>	Planning Study
<b>2018</b>	Long Range Transportation Plan
	Project Begins — Improvement options developed
<b>Spring 2019</b>	Preferred alternative presented at public meeting
<b>Spring 2019/ Summer 2020</b>	Preferred alternative further designed

***We are  
here.***

<b>Fall 2020</b>	Present preferred alternative design to the public
<b>2020–2021</b>	Finalize designs and begin planning construction
<b>2021</b>	Present final design to the public
<b>TBD</b>	Right-of-way acquisition
<b>TBD</b>	Construction begins



# PLANNED IMPROVEMENTS



## MDT's new interchange designs include:

- Building a wider overpass bridge with a sidewalk
- Adding two single-lane roundabouts with truck aprons at on- and off-ramp intersections
- Adding a sidewalk between the roundabout intersections
- Adding an additional southbound lane on I 15
- Relocating Tri Hill Frontage Road to the south



# NEW OVERPASS BRIDGE



**Based on input from the community, MDT decided to build a new interchange structure to the east of the current bridge, allowing the current overpass to continue to function during construction.**

**The new overpass will be wider and include:**

- 12-foot wide travel lanes
- 8-foot wide shoulders
- A sidewalk connecting the two roundabout intersections

# SINGLE-LANE ROUNDABOUTS



**Two roundabouts are replacing the on- and off-ramp intersections. The current intersections are difficult for trucks or other commercial vehicles to navigate. This leads to reduced traffic flow.**

**The new roundabouts will include:**

- Single lane
- Truck aprons for large vehicles
- Sidewalk and crosswalks



# PEDESTRIANS



**Sidewalk and crosswalks will provide safe passage over the overpass bridge and connectivity between the two roundabouts.**

# ACCOMMODATING TRUCK TRAFFIC



**The new single-lane roundabouts will include truck aprons in the center of the roundabout.**

**Truck aprons are designed to give large vehicles more space, accommodating their back tires and allowing for safer turning movements.**

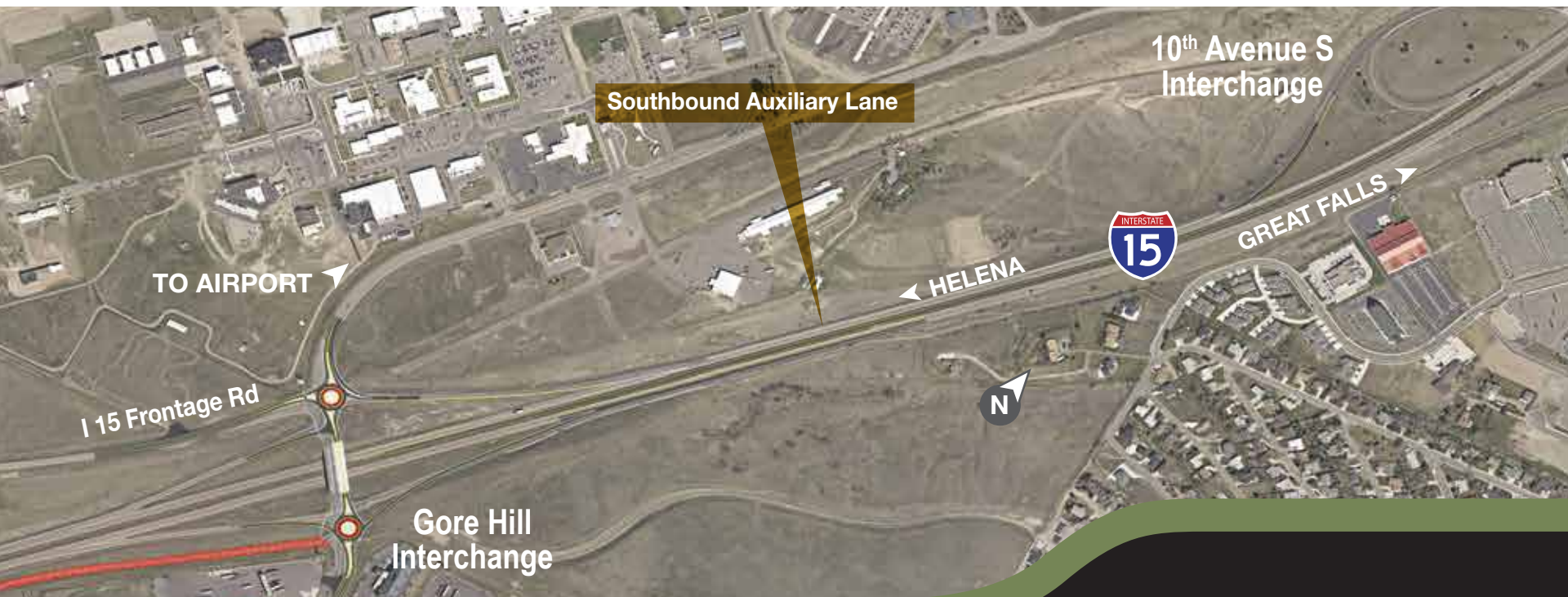
# SOUTHBOUND AUXILIARY LANE



**Adding an additional southbound lane on I 15 will improve traffic flow and provide safer merging movements.**

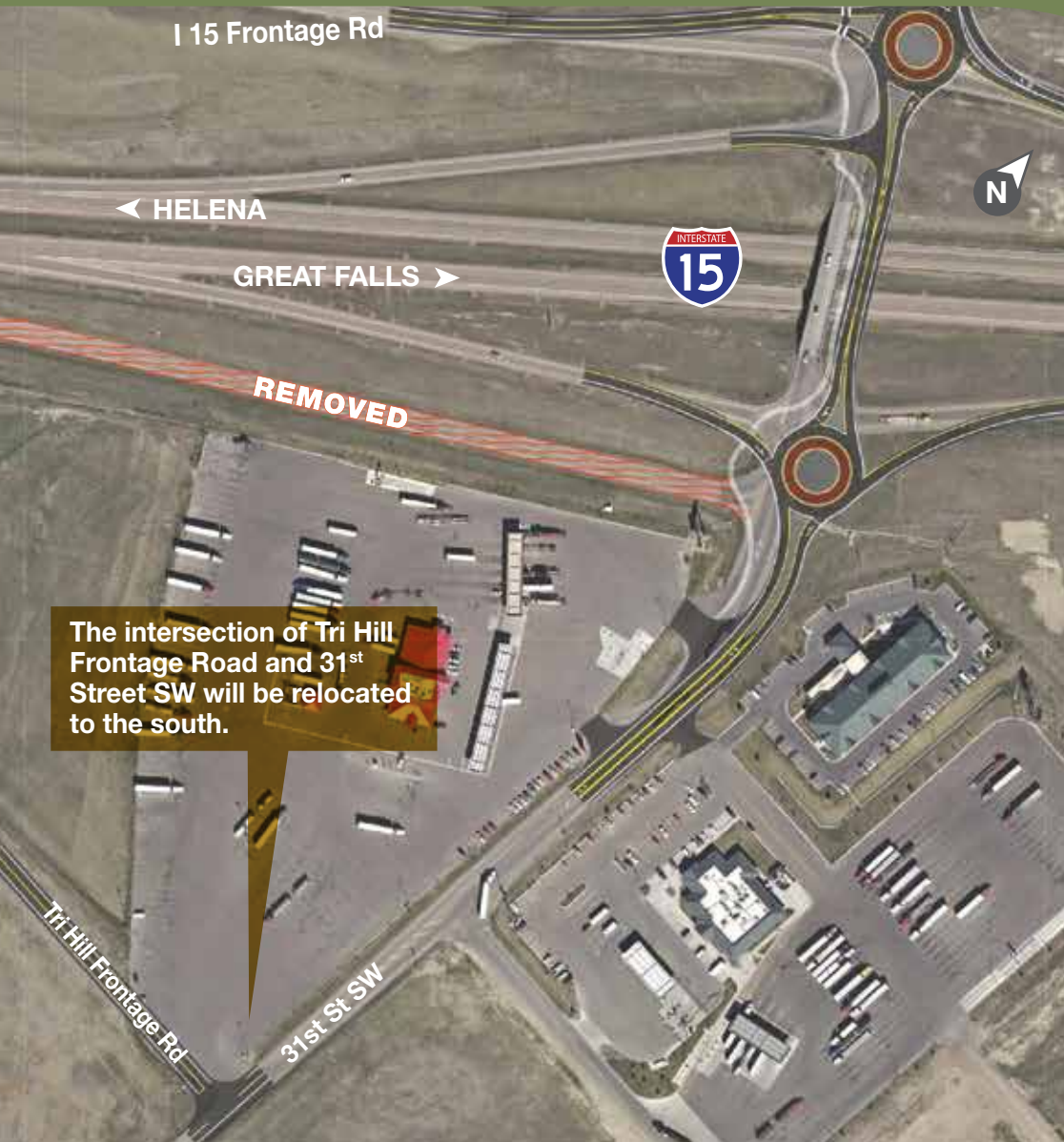
**The new lane will be added between the 10<sup>th</sup> Avenue South Interchange (EXIT 278) and the Gore Hill Interchange (EXIT 277).**

**The lane will exit on to the Gore Hill Interchange off-ramp.**





# TRI HILL FRONTAGE ROAD



**The Tri Hill Frontage Road and 31<sup>st</sup> Street SW intersection will be relocated to the south to reduce congestion and improve safety.**



# WHY ROUNDABOUTS?

Based on traffic and safety studies, MDT has determined roundabouts will serve these intersection locations better than signalized intersections.

## Single-lane Roundabout

### 1 Slow down

### 2 Look left

Yield to pedestrians and traffic already in the roundabout. Once you see a gap in traffic, enter the roundabout and proceed to your exit.

### Large Vehicles

Use the center Truck Apron for extra space.

### Pedestrians

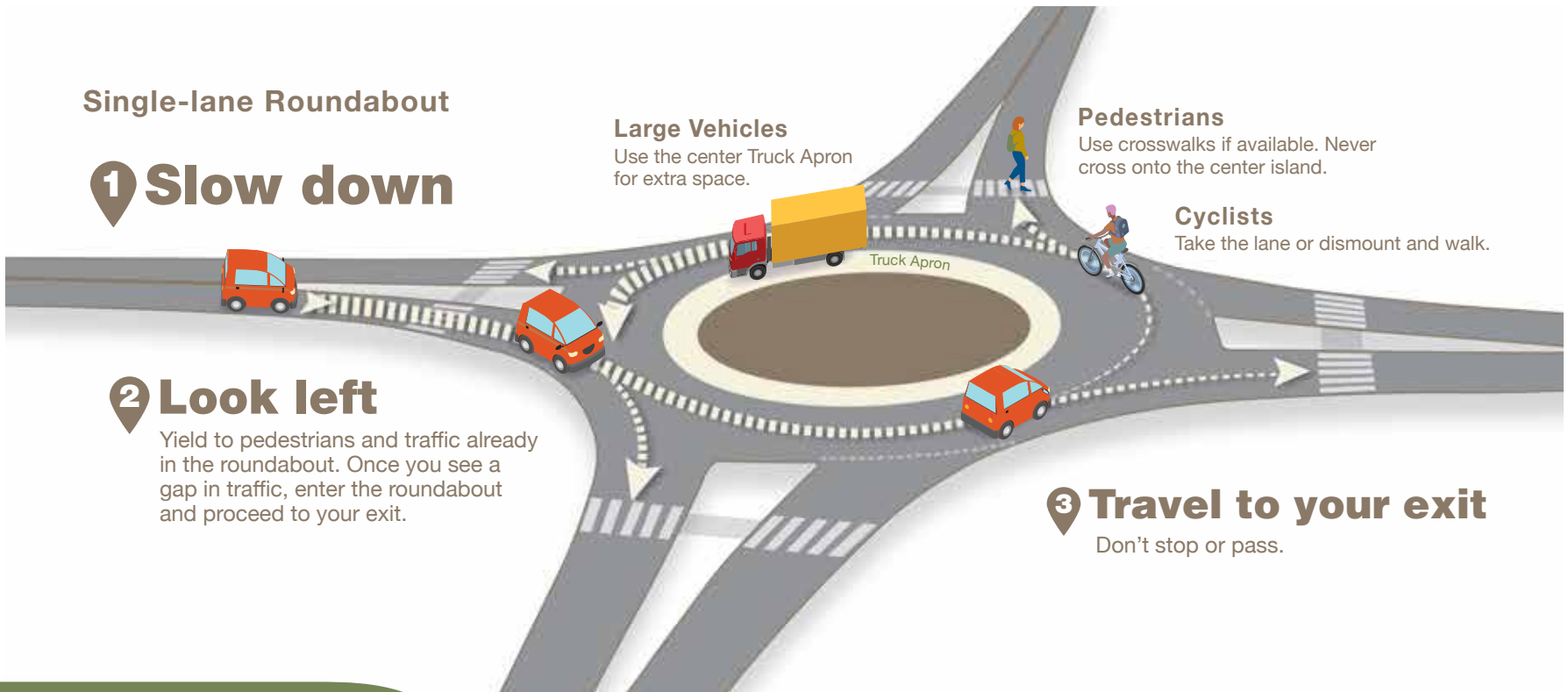
Use crosswalks if available. Never cross onto the center island.

### Cyclists

Take the lane or dismount and walk.

### 3 Travel to your exit

Don't stop or pass.



# WHY ROUNDABOUTS?



Roundabouts significantly reduce the frequency and severity of crashes compared to traditional stop-controlled and signalized intersections.

Studies indicate roundabouts reduce:

- Fatal collisions by **90 percent**
- Injury collisions by **75 percent**
- Pedestrian collisions by **40 percent**
- Overall collisions by **37 percent**



# NEXT STEPS



**MDT is in the process of refining the planned improvements.**

**Public input collected as a part of this online meeting and through an online survey, will be used to help finalize designs and develop construction plans.**

***We are  
here.***

**2020–2021**

Finalize designs and begin planning construction

**2021**

Present final design to the public

**TBD**

Right-of-way acquisition

**TBD**

Construction begins

# ONLINE SURVEY



**MDT has posted a survey online to learn more information on how the public uses the Gore Hill Interchange and how they can communicate better with you.**

**To participate in the survey visit:**

- Project website at <https://www.mdt.mt.gov/pubinvolve/gorehill>
- Find us on Facebook at [facebook.com/montanadot](https://facebook.com/montanadot)



# THANK YOU FOR PARTICIPATING



**Keeping the public informed  
is a priority for MDT.**

**You can help by letting us know  
the best ways to communicate project information with you by  
participating in the online survey.**

## **Stay Informed**

- Visit the project website at:  
<https://www.mdt.mt.gov/pubinvolve/gorehill>

## **Contact**

Brandon Coates, Public Involvement Manager

**EMAIL** Brandon@RBCI.net

**PHONE** (406) 465-3350



**VISION ZERO**  
zero deaths • zero serious injuries

MONTANA DEPARTMENT  
OF TRANSPORTATION