

WHAT WILL BE CONSIDERED?

The study will recommend improvements for Highway 93 and associated roadways in the downtown area of Whitefish. It will address Highway 93 from its intersection with 13th Street, northward along Spokane Avenue to 2nd Street, and west on 2nd Street to Baker Avenue. The study will also consider improvements on Baker Avenue from 2nd Street to 13th Street and existing or new east-west links between Baker Avenue and Spokane Avenue. The following focus areas will also be considered for all improvement options:



- Access
- Aesthetics/Character
- Economic Vitality
- Environment
- Future Growth
- Heavy Vehicles
- Parking
- Pedestrian/Bike Mobility
- Safety
- Seasonal Traffic
- Transit Accommodations
- Vehicle Mobility

WHAT ARE THE CHALLENGES?

The following considerations may guide or limit how improvements are developed within the study area. MDT will strive to balance the competing needs and interests of all users when developing a final solution.

- Cost / Funding
- Community Vision
- Competing Interests & Needs
- Environmental Impacts
- Existing Development
- Limited Right-of-Way

STAY IN THE KNOW



CALL

Courtenay Sprunger
at 406-261-7665

WITH A COMMENT OR QUESTION



EMAIL

Courtenay@BigSkyPublicRelations.com

TO SUBMIT A COMMENT OR TO SIGN
UP FOR PERIODIC PROJECT UPDATES



VISIT

www.mdt.mt.gov/pubinvolve/DowntownWhitefish/



VISION ZERO
zero deaths · zero serious injuries

MONTANA DEPARTMENT
OF TRANSPORTATION

Learn More about Vision Zero at:

www.mdt.mt.gov/visionzero

Alternative accessible formats of this information will be provided upon request by contacting the Office of Civil Rights, P.O., Box 201001, Helena, MT 59620; (406) 444-9229; fax (406) 444-7243; or email to aflesch@mt.gov. Those using a TTY may call (800) 335-7592 or through the Montana Relay Service at 711.

This document is printed at state expense. Information on the cost of producing this publication may be obtained by contacting the Department of Administration.



Newsletter #1
March 2020

DOWNTOWN WHITEFISH
HIGHWAY STUDY



BACKGROUND AND PURPOSE

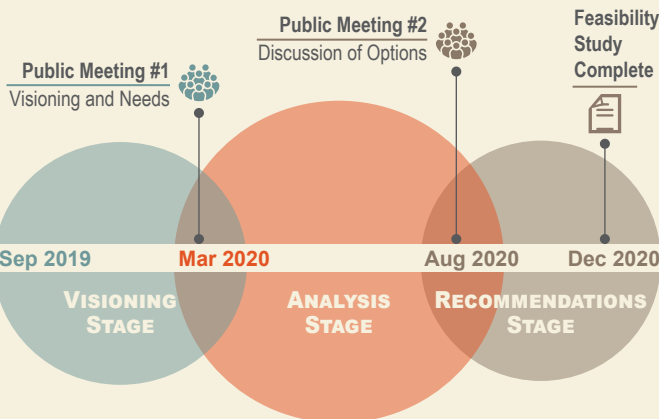
The Montana Department of Transportation (MDT) is in the early phases of a feasibility study on Highway 93 through Downtown Whitefish. Over the last two decades, the Whitefish community has experienced substantial growth in population and traffic volumes resulting in additional vehicle delay and congestion. Improvements are needed to improve traffic flow and safety of Highway 93.

Over the past several years, various local planning documents have been prepared which discuss Downtown Whitefish. Each have explored design solutions for Highway 93 through different lenses (traffic, environment, bike and pedestrian, downtown businesses, etc.). Options from past plans include providing an alternate north-south route, bolstering existing east-west routes, and constructing a new bridge connection over the Whitefish River.

Through the current *Downtown Whitefish Highway Study*, project partners aim to analyze past options and identify potential new ideas to ultimately arrive at a final solution that aligns with local planning desires and addresses safety and operational concerns for all users over the next 20 years.

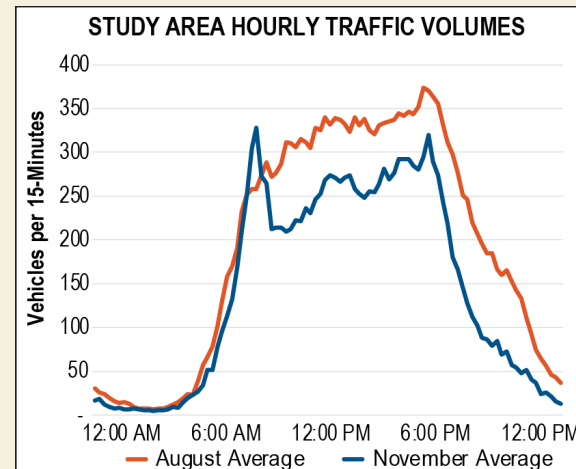
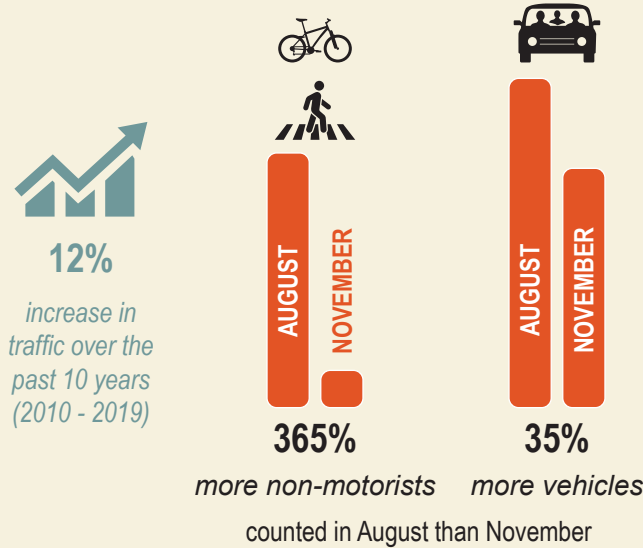
SCHEDULE

The *Downtown Whitefish Highway Study* is currently scheduled for completion by the end of 2020. A final design configuration and construction schedule will be determined following completion of the study.



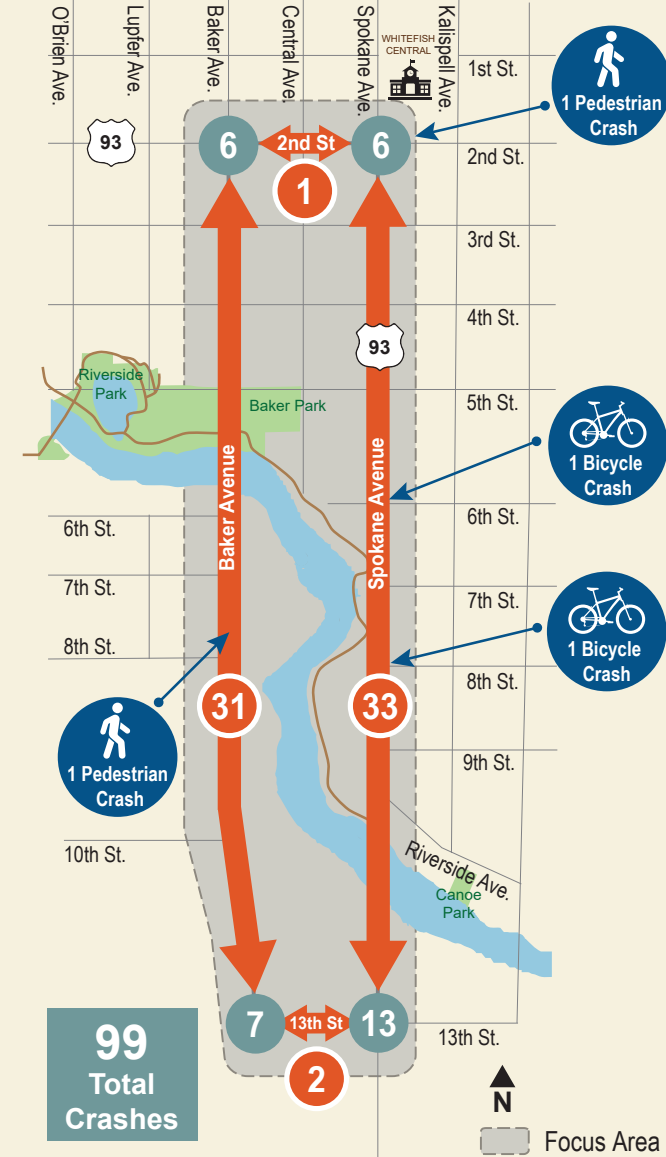
TRAFFIC CONDITIONS

Highway 93 is located in the center of the Whitefish community and serves as the primary travel route through the city for residents, visitors, and other through traffic. The current transportation serves traffic of all modes including passenger cars, heavy vehicles, pedestrians, bicyclists, and public transit. During summer months, Downtown Whitefish experiences a spike in traffic volumes. High traffic volumes can contribute to congestion and travel delays on the highway and local cross streets.



SAFETY CONSIDERATIONS

Safety is a primary focus area on all MDT projects. In support of Vision Zero, MDT is striving to eliminate all deaths and injuries on Montana highways. From 2014 to 2018, 99 crashes occurred on study roadways in Downtown Whitefish. Of these, 2 crashes caused serious injuries and 16 crashes caused possible injuries.



*Crashes reported between January 1, 2014 - December 31, 2018