





Central Montana Transportation Study

WELCOME

Meeting Purpose:

-  **Learn** about the *Central Montana Transportation Study* process
-  **Understand** access management principles
-  **Discover** baseline transportation and environmental conditions within the study area
-  **Share** your thoughts and concerns

SCAN
ME!



Add your
feedback to
the online
commenting map!



Your **input is needed**
to understand transportation concerns
in Central Montana!

OR VISIT



www.mdt.mt.gov/pubinvolve/centralmt/

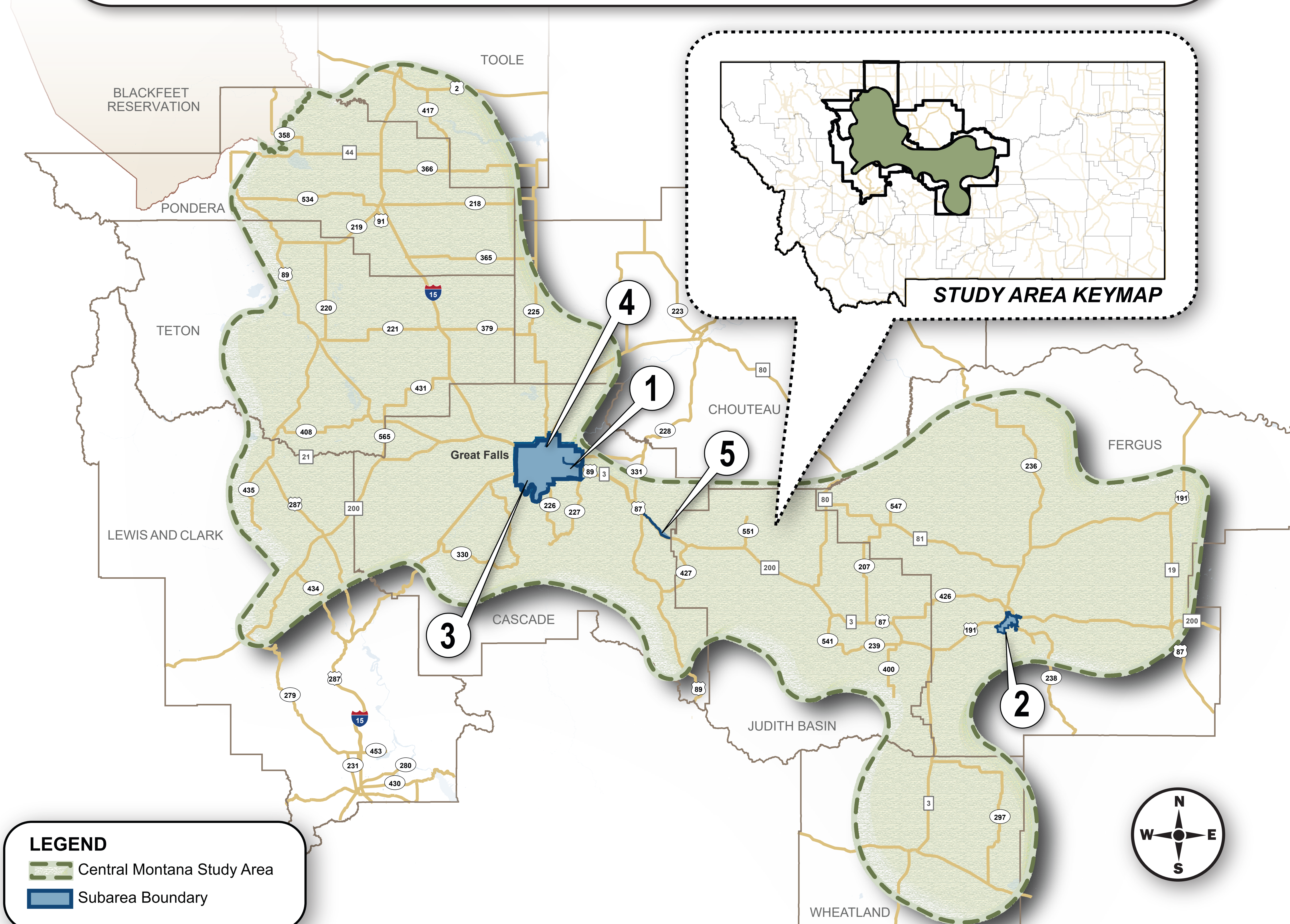


Transportation Study Overview

MDT is developing the *Central Montana Transportation Study* to create a **long-term management plan addressing anticipated impacts from planned development and military activities** in the region. The study focuses on **infrastructure resiliency** within the Great Falls and Lewistown areas, as well as MDT's on system routes within these nine counties: Cascade, Chouteau, Fergus, Judith Basin, Lewis and Clark, Pondera, Teton, Toole, and Wheatland.

In addition to evaluating the entire study area, detailed analyses will be conducted in smaller subareas:

- 1 Access Management Plan: Great Falls – 57th Street and US 87/89
- 2 Lewistown Subarea
- 3 Great Falls Subarea
- 4 Old Havre Highway & US 87 Subarea
- 5 US 87 Armington Junction – Otter Creek Canyon Subarea



Transportation Study Overview

What development is anticipated in the Central Montana region?

The **US Air Force** intends to decommission the aging Minuteman III intercontinental ballistic missile (ICBM) system and deploy a new **Sentinel ICBM weapon system** at facilities throughout Central Montana. Activities will include design, permitting, right-of-way acquisition, mobilization, and material transport, as well as onsite construction at each missile facility and along associated utility corridors. Workforce hubs and laydown areas will be established throughout the region to support construction activities. Additionally, improvements will be made at the Malmstrom Air Force Base in Great Falls.

More information is available at:

www.afgsc.af.mil/Sentinel-GBSD/

New commercial and industrial developments are also planned in the Central Montana region. One example is the planned VACOM industrial manufacturing facility in Lewistown. The German company is planning to build a new American operational facility near the Lewistown Airport, with the construction timeframe dependent on market conditions.

More information is available at:

www.vacom.net/us/en/vacom/about-vacom/usa-montana.html

What is the study process?

- A** As an initial planning step for the subareas and the broader nine-county study area, the study has focused on documenting **baseline environmental and transportation conditions**.
- B** **Access management** is a high priority given development activities near the Malmstrom Air Force Base. MDT is addressing this as an initial task in the study.
- C** Building on baseline information for the remainder of the subareas, future tasks will include **analysis of impacts and proposed improvement recommendations** once anticipated military and development details are known. Future task sequencing and duration is subject to change depending on information availability.

