



**MONTANA**

Department of Transportation

**Engineering Systems CADD Support**

### Application Support Guide

Application/Tool(s): AutoCAD / Civil 3D

Version(s): Civil 3D 2022.2.2 Update

Environment(s): MDT Civil 3D State Kit r2022 v1.22

Released/Revised: 8/29/2023

# MDT TITLE BLOCK NAMES AND DATES UPDATE

## ISSUE:

The title block was updated in version 1.22 of the MDT Civil 3D State Kit so that the names and dates are associated with the custom properties of a sheet set file. The order of the names and their associated fields were also changed so that the names and dates are arranged in chronological order (Designed by, Reviewed by, Checked by).

This update affects all files having layouts containing the MDT Title Block (***B-BorderRoad\_11x17***) created prior to this State Kit release. This update causes an inconsistency in plans when a new layout from the new State Kit is added to a plan set that was created using layouts from an older version of the state kit. This documentation demonstrates how to update the blocks so that pages in a plan set will have a title block that functions with the sheet set properties properly and is consistent in appearance across all pages.

## **SOLUTION:**

### Update Title Block and Create New Sheet Set

Update the title block in all layouts that are tied to a sheet set created prior to v1.22. Remove the layouts from the existing sheet set. Create a new sheet set with the updated MDT\_SSM.dst example sheet set for the attributes to function correctly. Then delete the old sheet set.

**OR**

### Edit Sheet Set and Update Title Block

Update the Custom Properties of the sheet set created prior to v1.22 so that the fields in the updated title block will be correctly tied to the sheet set. Update the title block in all layouts that are tied to a sheet set. This option would be more effective for a project with larger sheet set(s).

## **PROCEDURE:**

The following are procedures for the referenced solutions. Depending on the option chosen, these procedures may not be followed in the order shown.

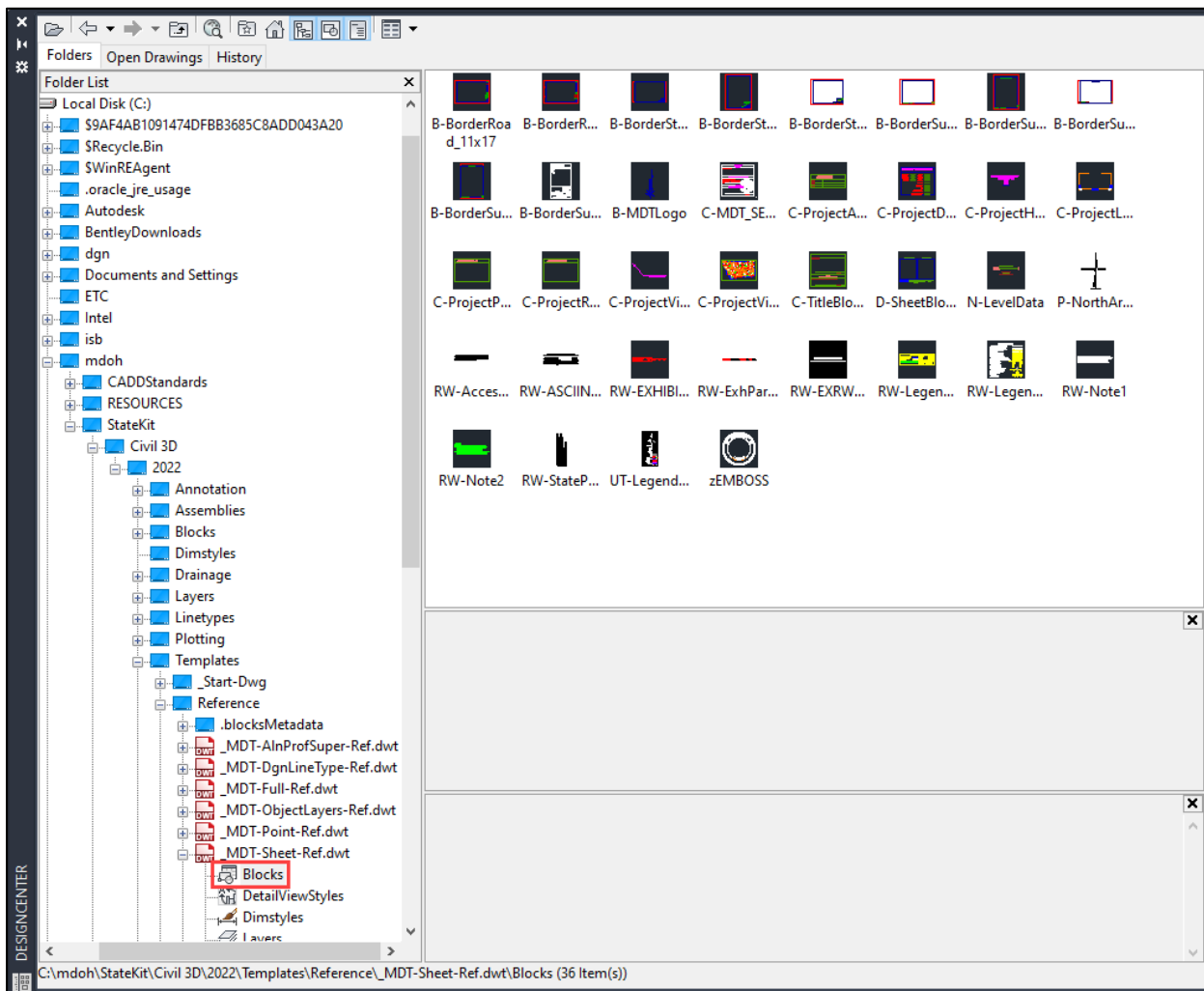
[Update Title Block](#)

[Create New Sheet Set](#)

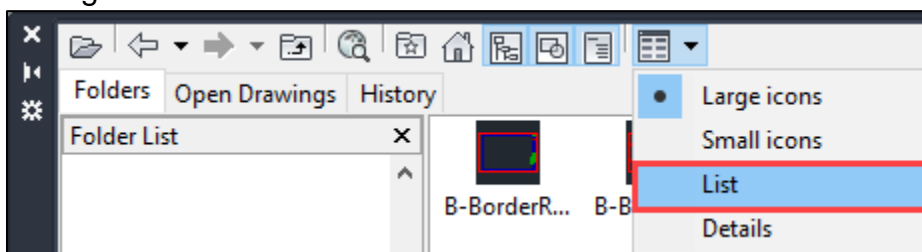
[Edit Sheet Set](#)

### Update Title Block

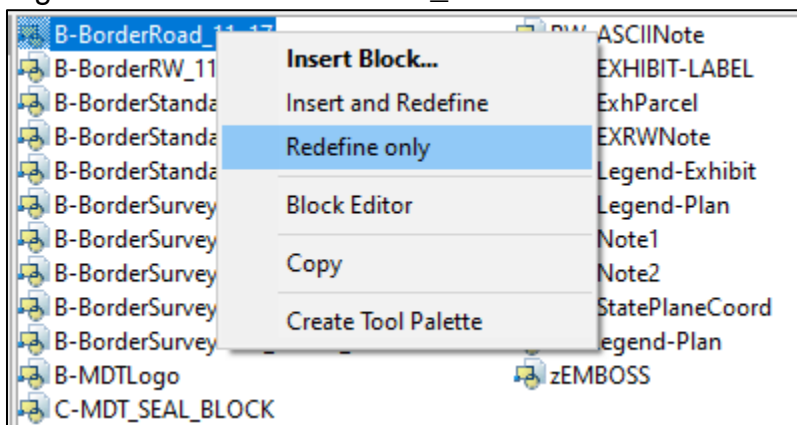
- 1) Open an existing plan production file containing layouts made from a previous State Kit version.
- 2) Open the *Design Center* from the palettes dropdown on the *Home* tab (or press **Ctrl+2**), select the *Folders* tab, and navigate to *C:\mdoh\StateKit\Civil 3D\2022\Templates\Reference\MDT-Sheet-Ref.dwt*. Select blocks.



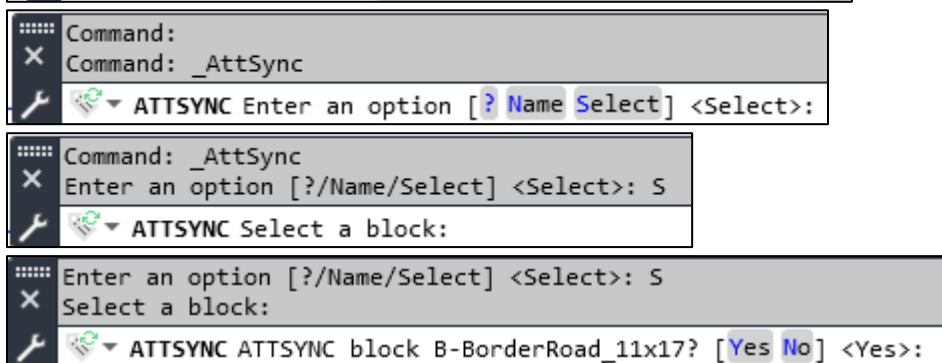
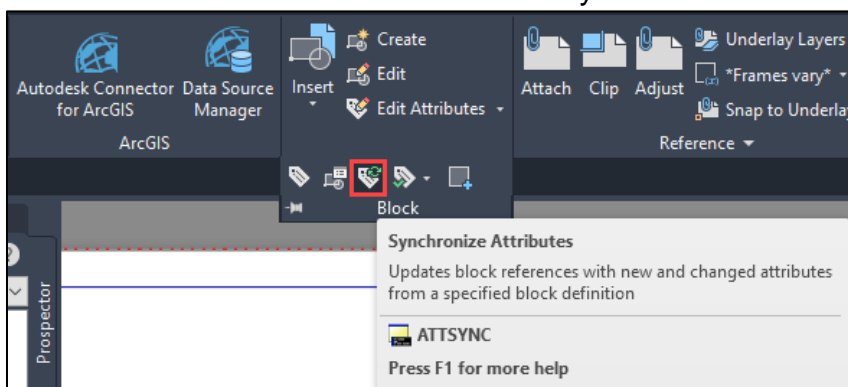
- 3) Change the view from icon to list.



- 4) Right click the **B-BorderRoad\_11x17** block and select **Redefine only**.



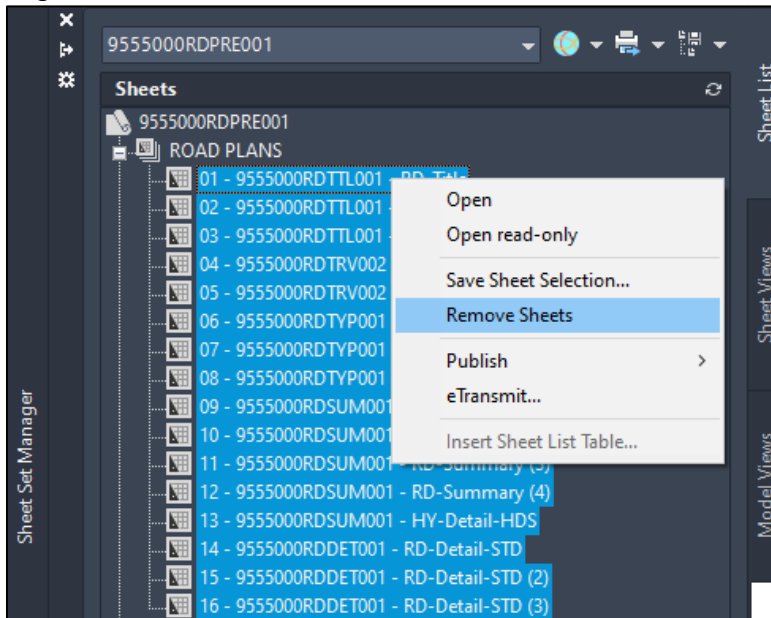
- 5) Close out of the *Design Center* and select a layout.
- 6) In the *Insert* tab, expand the Block panel and select **Synchronize Attributes** (Command: **ATTSYNC**). Use the **Select** option and select a border block. Then select **Yes**. All blocks within the file will sync.



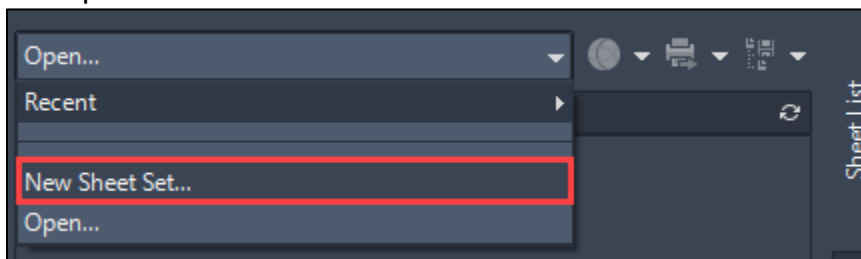
- 7) Repeat Steps 1-6 for all files containing layouts tied to a sheet set.

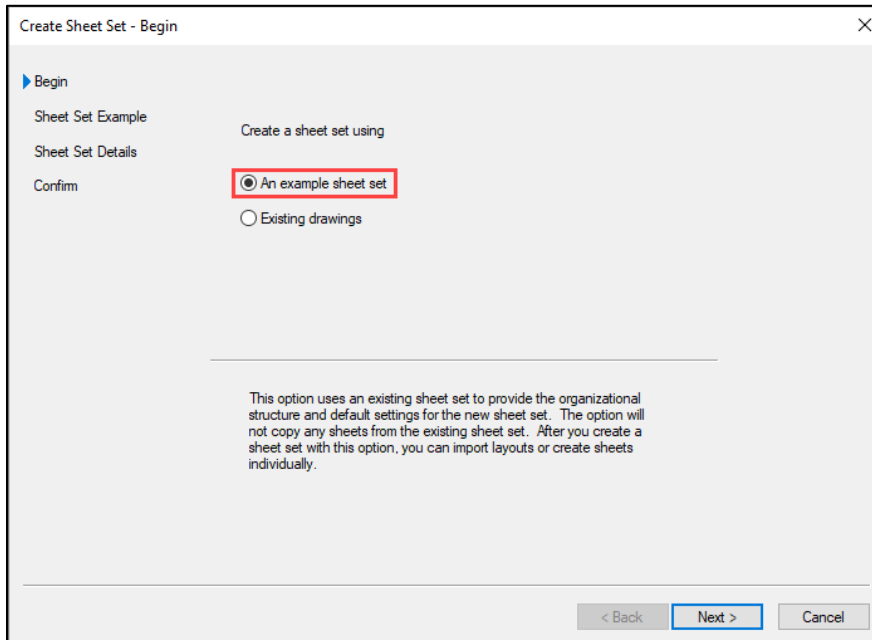
### Create New Sheet Set

- 1) Open the existing sheet set file for the project and select all layouts using **Shift+Select**.
- 2) Right click and **Remove Sheets** from the sheet set.



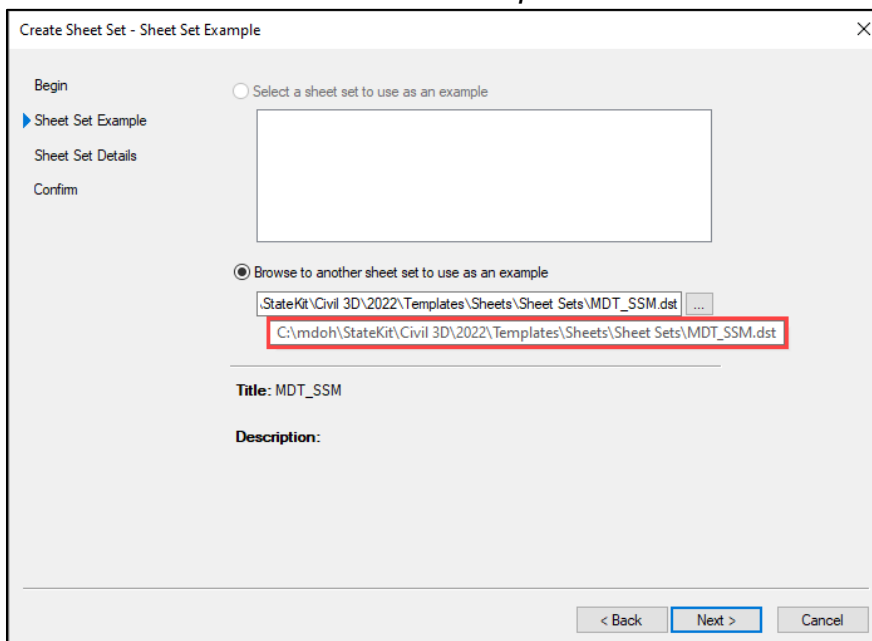
- 3) Create a new sheet set for the existing files using the updated **MDT\_SSM.dst** example sheet set. Then select **Next**.



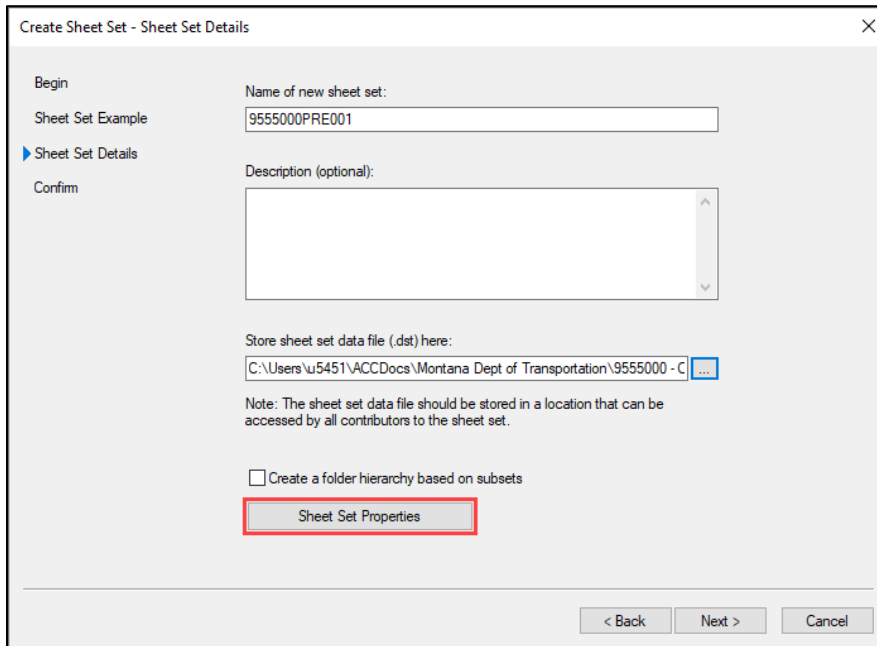


- 4) If not already set to the correct location, select the example sheet set from the following location:

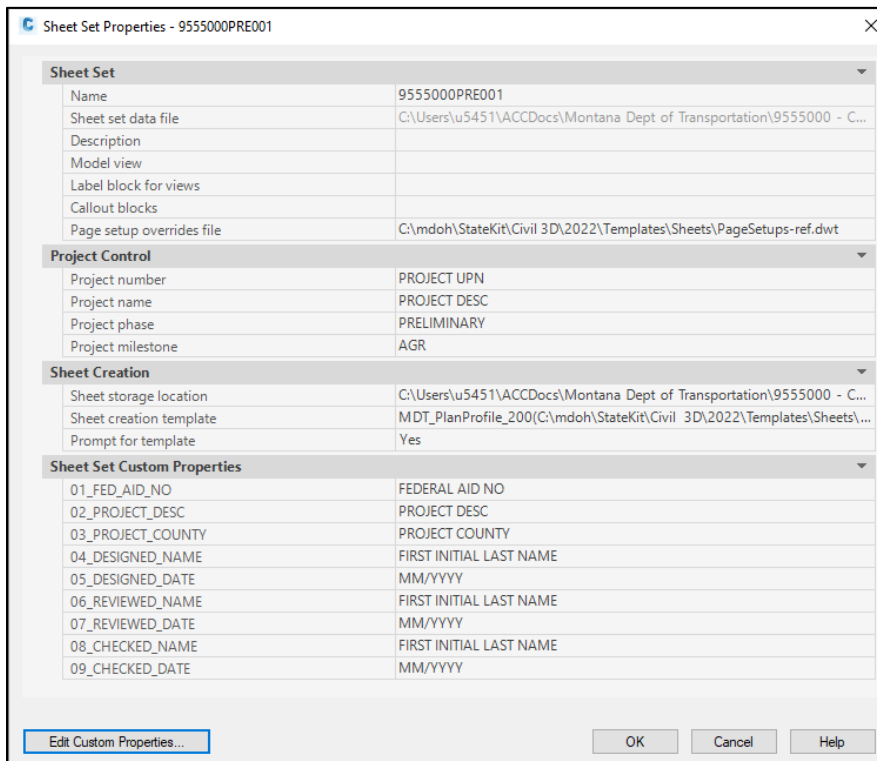
*C:\mdoh\StateKit\Civil 3D\2022\Templates\Sheets\Sheet Sets\MDT\_SSM.dst*



- 5) If preferred, set up *Sheet Set Properties* while creating the sheet set, then select **OK**.



The 'Create Sheet Set - Sheet Set Details' dialog box is shown. It has a 'Begin' tab selected. The 'Name of new sheet set:' field contains '9555000PRE001'. The 'Description (optional):' field is empty. The 'Store sheet set data file (.dst) here:' field contains 'C:\Users\u5451\ACCDocs\Montana Dept of Transportation\9555000 - C...'. A note below states: 'Note: The sheet set data file should be stored in a location that can be accessed by all contributors to the sheet set.' There is an unchecked checkbox for 'Create a folder hierarchy based on subsets'. A 'Sheet Set Properties' button is highlighted with a red rectangle. At the bottom are '< Back', 'Next >', and 'Cancel' buttons.



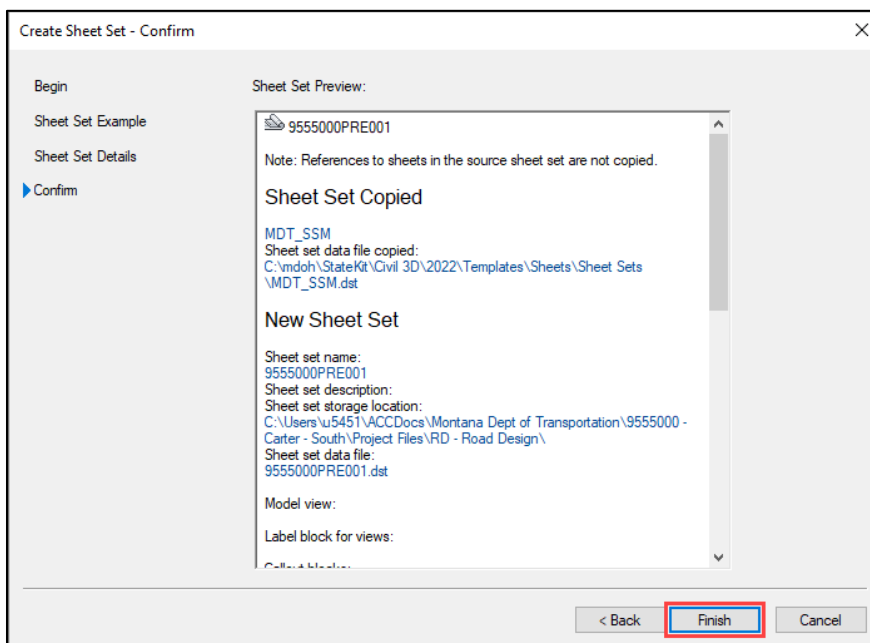
The 'Sheet Set Properties - 9555000PRE001' dialog box is shown. It contains several sections:

- Sheet Set**
  - Name: 9555000PRE001
  - Sheet set data file: C:\Users\u5451\ACCDocs\Montana Dept of Transportation\9555000 - C...
  - Description:
  - Model view:
  - Label block for views:
  - Callout blocks:
  - Page setup overrides file: C:\mdoh\StateKit\Civil 3D\2022\Templates\Sheets\PageSetups-ref.dwt
- Project Control**
  - Project number: PROJECT UPN
  - Project name: PROJECT DESC
  - Project phase: PRELIMINARY
  - Project milestone: AGR
- Sheet Creation**
  - Sheet storage location: C:\Users\u5451\ACCDocs\Montana Dept of Transportation\9555000 - C...
  - Sheet creation template: MDT\_PlanProfile\_200(C:\mdoh\StateKit\Civil 3D\2022\Templates\Sheets\...
  - Prompt for template: Yes
- Sheet Set Custom Properties**

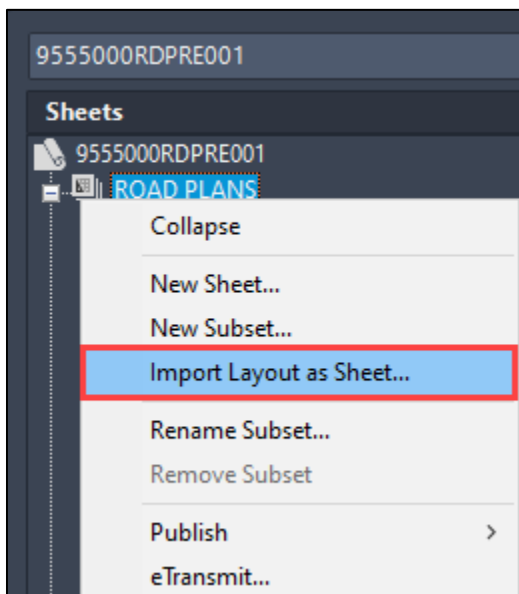
01_FED_AID_NO	FEDERAL AID NO
02_PROJECT_DESC	PROJECT DESC
03_PROJECT_COUNTY	PROJECT COUNTY
04_DESIGNED_NAME	FIRST INITIAL LAST NAME
05_DESIGNED_DATE	MM/YYYY
06_REVIEWED_NAME	FIRST INITIAL LAST NAME
07_REVIEWED_DATE	MM/YYYY
08_CHECKED_NAME	FIRST INITIAL LAST NAME
09_CHECKED_DATE	MM/YYYY

At the bottom are 'Edit Custom Properties...', 'OK', 'Cancel', and 'Help' buttons.

- 6) Select **Finish** to close out of the *Create Sheet Set* wizard.



- 7) **Import** all applicable layouts to the newly created sheet set to recreate the plan set.



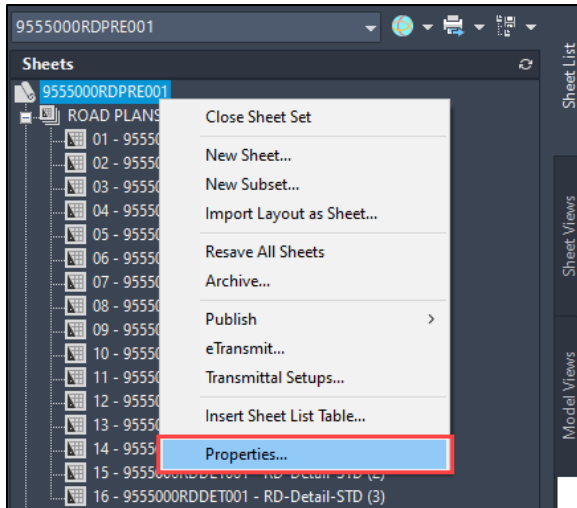
- 8) Verify that sheet set fields update in the new block by editing the custom properties of the sheet set. The Regen All command (**REA**) may need to be used on the layouts for the updates to go into effect. The Sheet Set Manager can also be used to Resave All Sheets (right click sheet set>Resave All Sheets) to have the updates go into effect.
- 9) Rename and renumber the plan sheets as applicable.



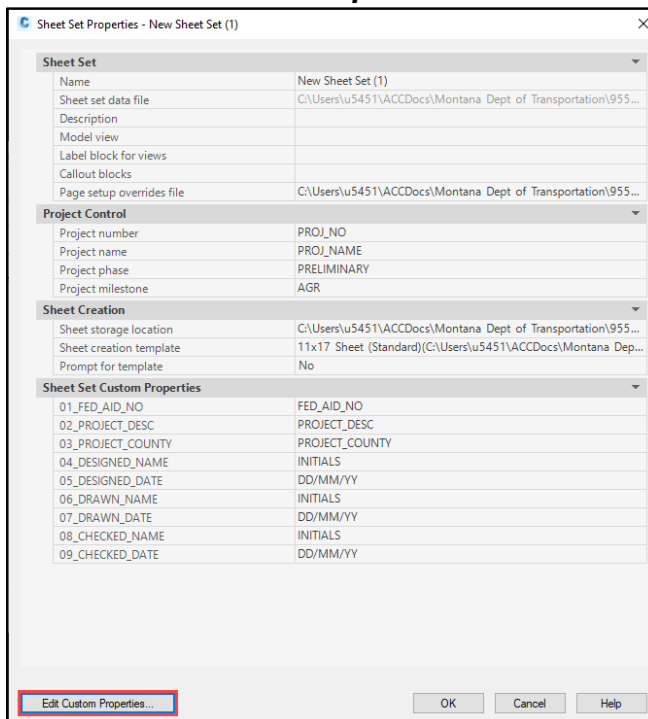
- 10) Delete the old DST from BIM 360.

### Edit Sheet Set

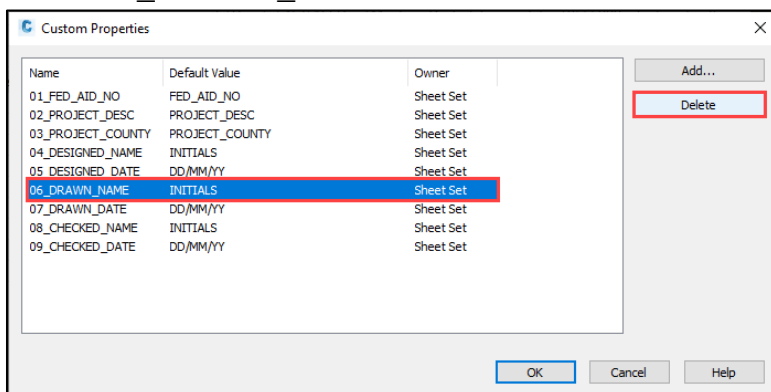
- 1) Open the existing sheet set file for the project, right click the sheet set, and select **Properties...**



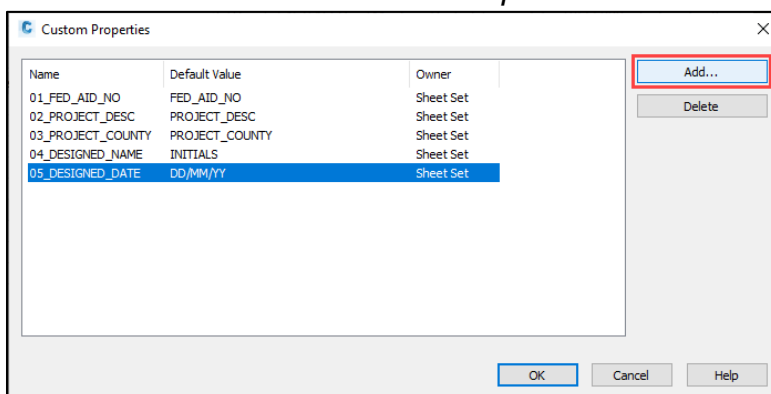
- 2) Select **Edit Custom Properties...**



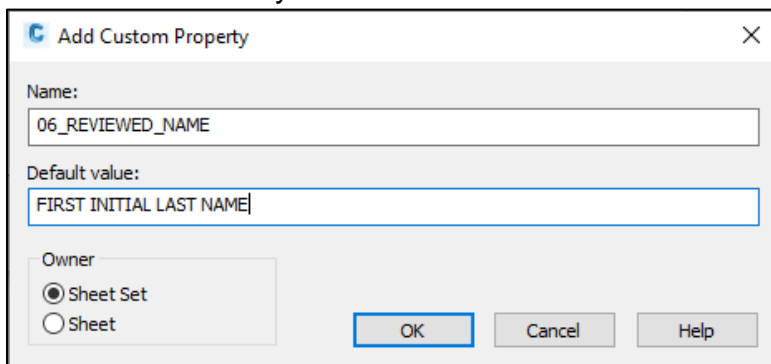
- 3) Select **06\_DRAWN\_NAME** and then select **Delete**. Repeat for items 07-09.



- 4) Select **Add...** from the *Custom Properties* menu.



- 5) In the *Add Custom Property* box, type **06\_REVIEWED\_NAME** for the *Name* and type **FIRST INITIAL LAST NAME** for the *Default Value*. Select Sheet Set for the Owner if not already set. Then select **OK**.

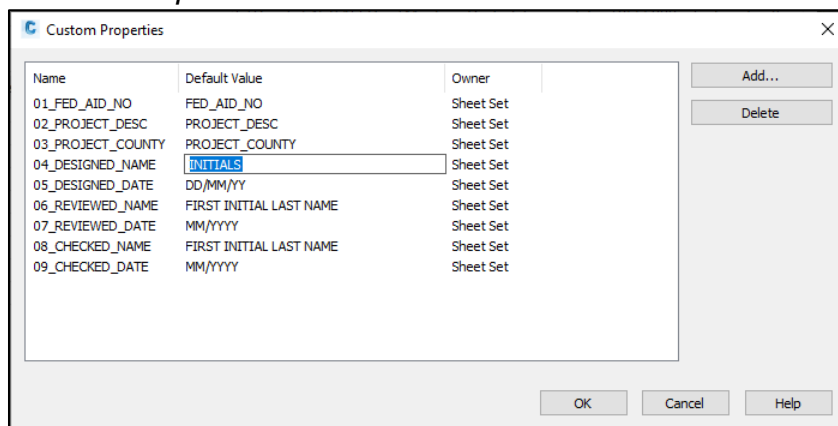


**NOTE:** The *Name* value must exactly match what is typed above, otherwise the tie between the fields for the names and dates in the title block and the Sheet Set Manager will not be established.

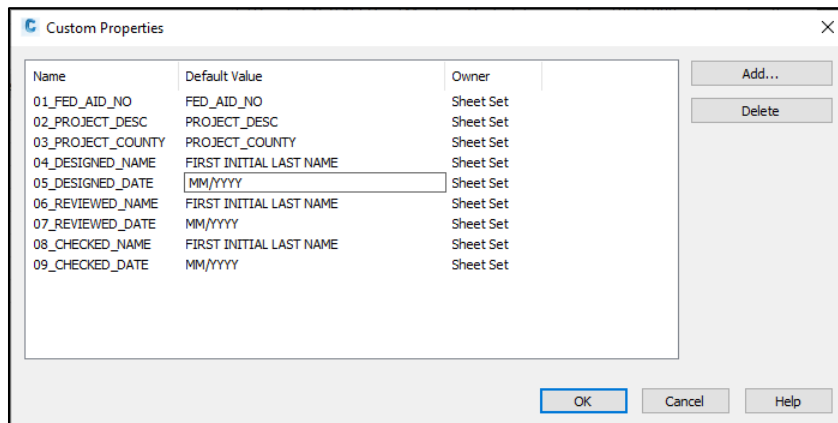
- 6) Repeat Steps 11-12 with the following names and values in the exact order:

Name:	Default Value:
07_REVIEWED_DATE	MM/YYYY
08_CHECKED_NAME	FIRST INITIAL LAST NAME
09_CHECKED_DATE	MM/YYYY

- 7) Change the *Default Value* for the **04\_DESIGNED\_NAME** to **FIRST INITIAL LAST NAME** and the **05\_DESIGNED\_DATE** to **MM/YYYY** by clicking in the row for the item in the *Default Value* column. Then select **OK** to close out of the *Custom Properties* window.

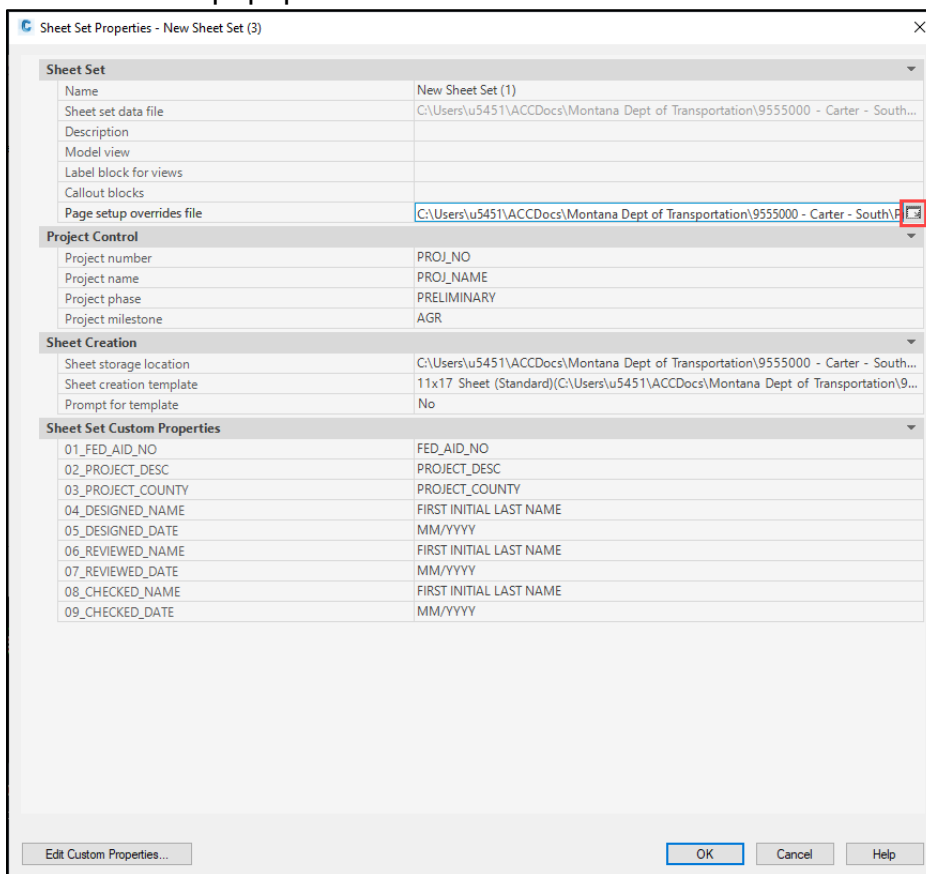


Name	Default Value	Owner
01_FED_AID_NO	FED_AID_NO	Sheet Set
02_PROJECT_DESC	PROJECT_DESC	Sheet Set
03_PROJECT_COUNTY	PROJECT_COUNTY	Sheet Set
04_DESIGNED_NAME	INITIALS	Sheet Set
05_DESIGNED_DATE	DD/MM/YY	Sheet Set
06_REVIEWED_NAME	FIRST INITIAL LAST NAME	Sheet Set
07_REVIEWED_DATE	MM/YYYY	Sheet Set
08_CHECKED_NAME	FIRST INITIAL LAST NAME	Sheet Set
09_CHECKED_DATE	MM/YYYY	Sheet Set



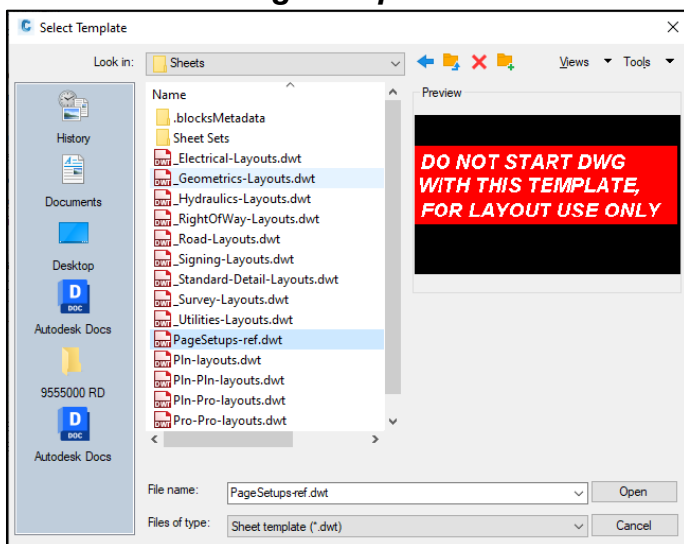
Name	Default Value	Owner
01_FED_AID_NO	FED_AID_NO	Sheet Set
02_PROJECT_DESC	PROJECT_DESC	Sheet Set
03_PROJECT_COUNTY	PROJECT_COUNTY	Sheet Set
04_DESIGNED_NAME	FIRST INITIAL LAST NAME	Sheet Set
05_DESIGNED_DATE	MM/YYYY	Sheet Set
06_REVIEWED_NAME	FIRST INITIAL LAST NAME	Sheet Set
07_REVIEWED_DATE	MM/YYYY	Sheet Set
08_CHECKED_NAME	FIRST INITIAL LAST NAME	Sheet Set
09_CHECKED_DATE	MM/YYYY	Sheet Set

- 8) In the *Sheet Set Properties* window, select the *Page setup overrides file* location and select the popup window icon.

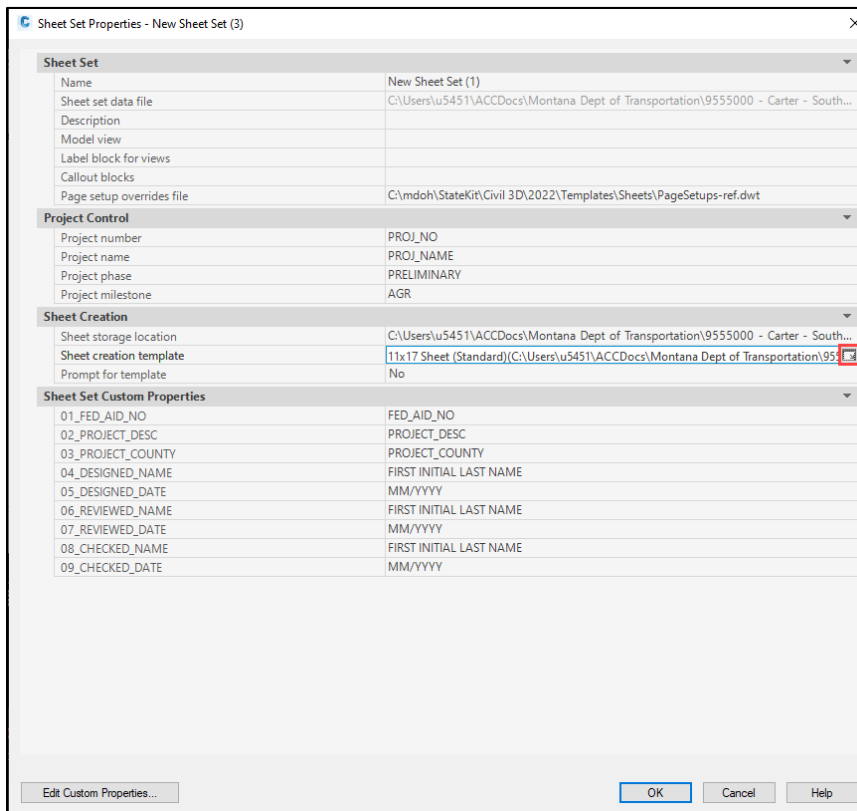


- 9) In the *Select Template* window, navigate to the following location:  
*C:\mdoh\StateKit\Civil 3D\2022\Templates\Sheets*

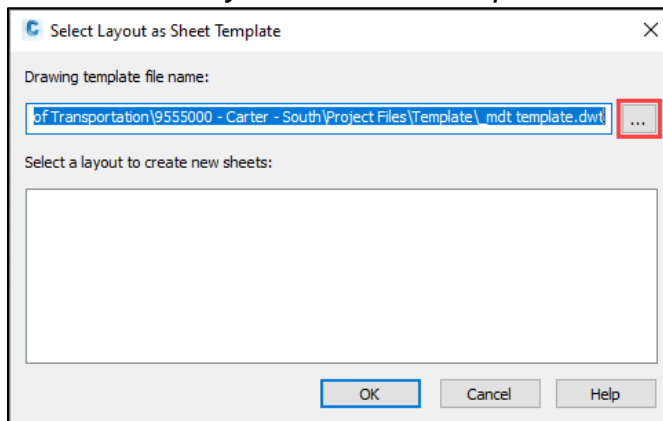
Then select the **PageSetups-ref.dwt** file and select **Open**.



- 10) Select the *Sheet creation template* file location and select the popup window icon.

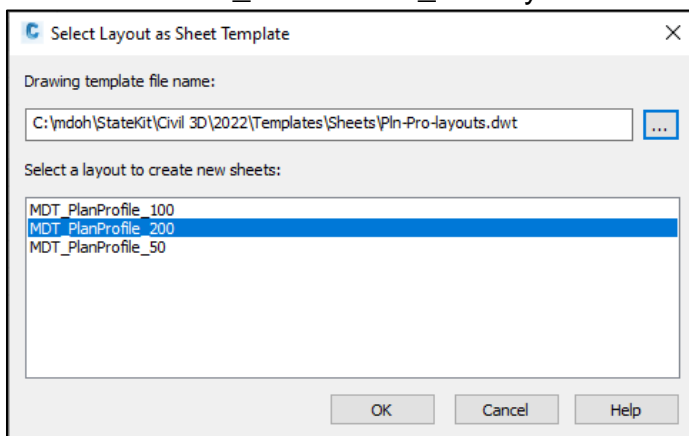


- 11) In the *Select Layout as Sheet Template* window, select the ellipsis button.

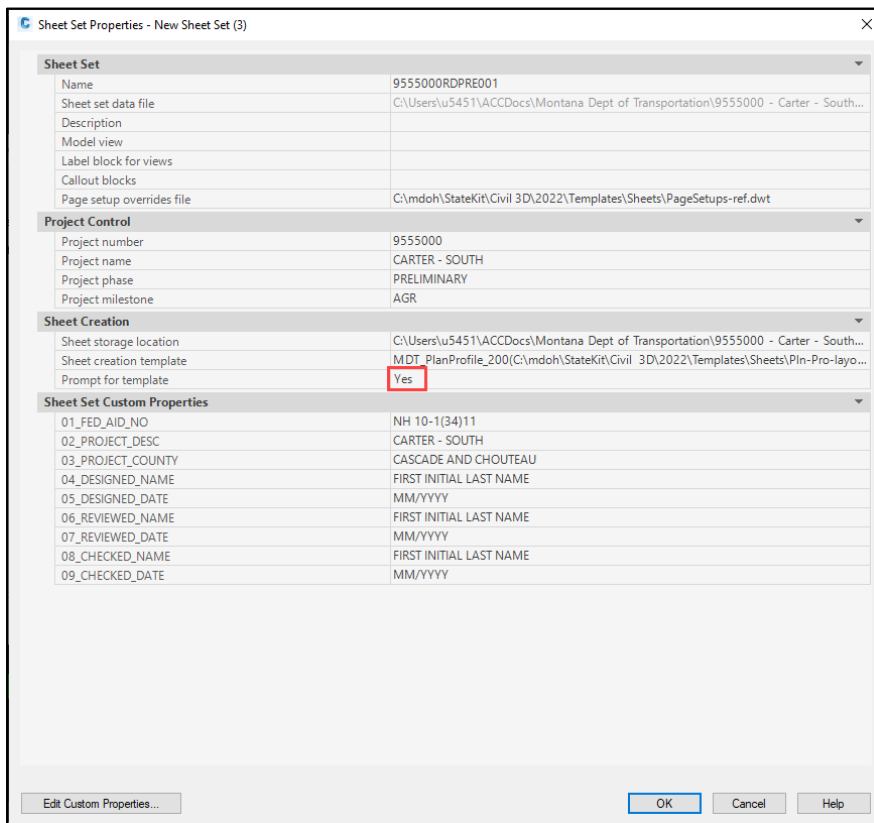


- 12) In the *Select Template* window, navigate to the following location:  
*C:\mdoh\StateKit\Civil 3D\2022\Templates\Sheets*  
Then select the **Pln-Pro-layouts.dwt** file and select **Open**.

- 13) Select the **MDT\_PlanProfile\_200** layout to create new sheets, then select **OK**.

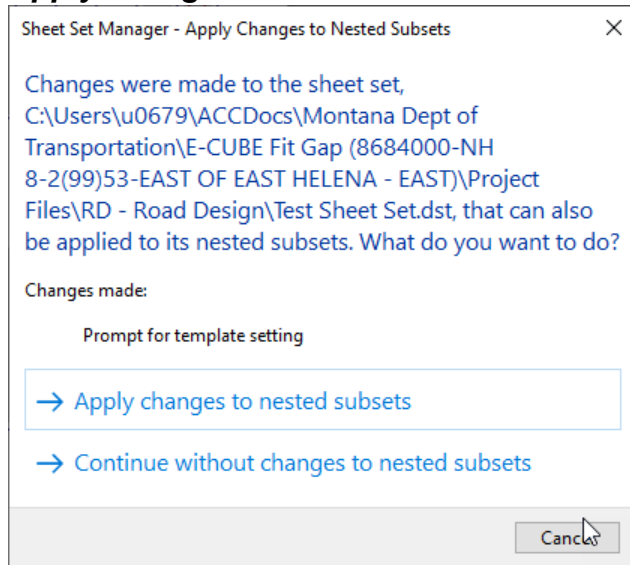


- 14) In the *Sheet Creation* section, change the *Prompt for template* option from **No** to **Yes**.

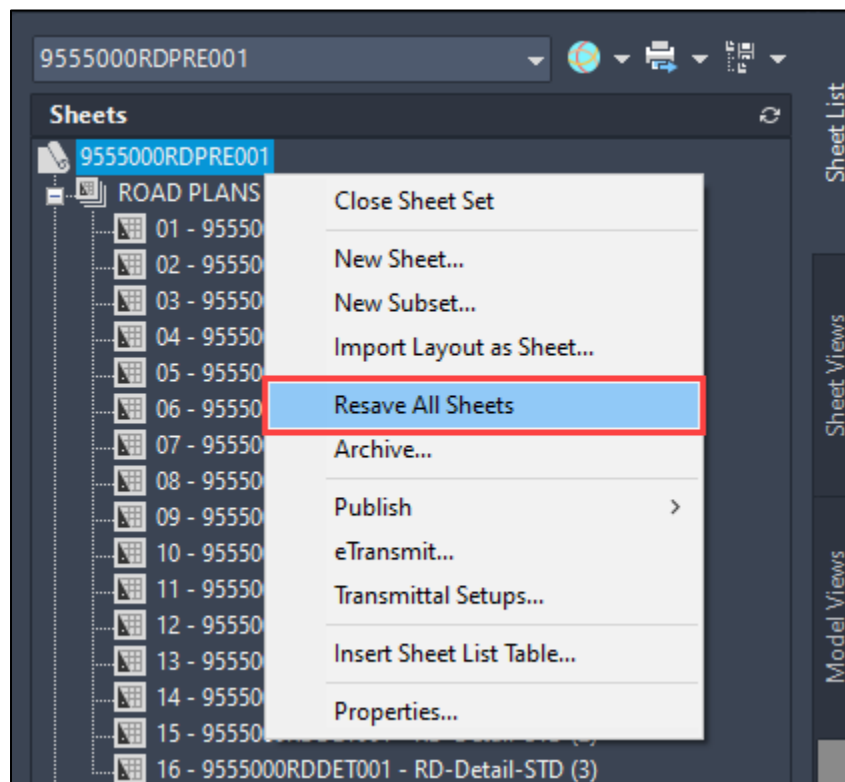


- 15) Select **OK**.

- 16) In the *Sheet Set Manager – Apply Changes to Nested Subsets* prompt, choose **Apply changes to nested subsets**.



- 17) The required changes are complete. Update the *Names* and *Dates* for the appropriate properties as necessary. Then select **OK** to exit the *Sheet Set Properties* menu. All design files linked to the sheet set may require to be regenerated (Command: **REA**) and resaved for the fields to update. To resave all sheets in the sheet set, right click the sheet set in the *Sheet Set Manager* and select **Resave All Sheets**.



## **SUPPORT CONTACT:**

Please [Open a Case](#) with the MDT Service Desk for assistance. This is also accessible from the [Engineering Apps & Resources](#) web page.