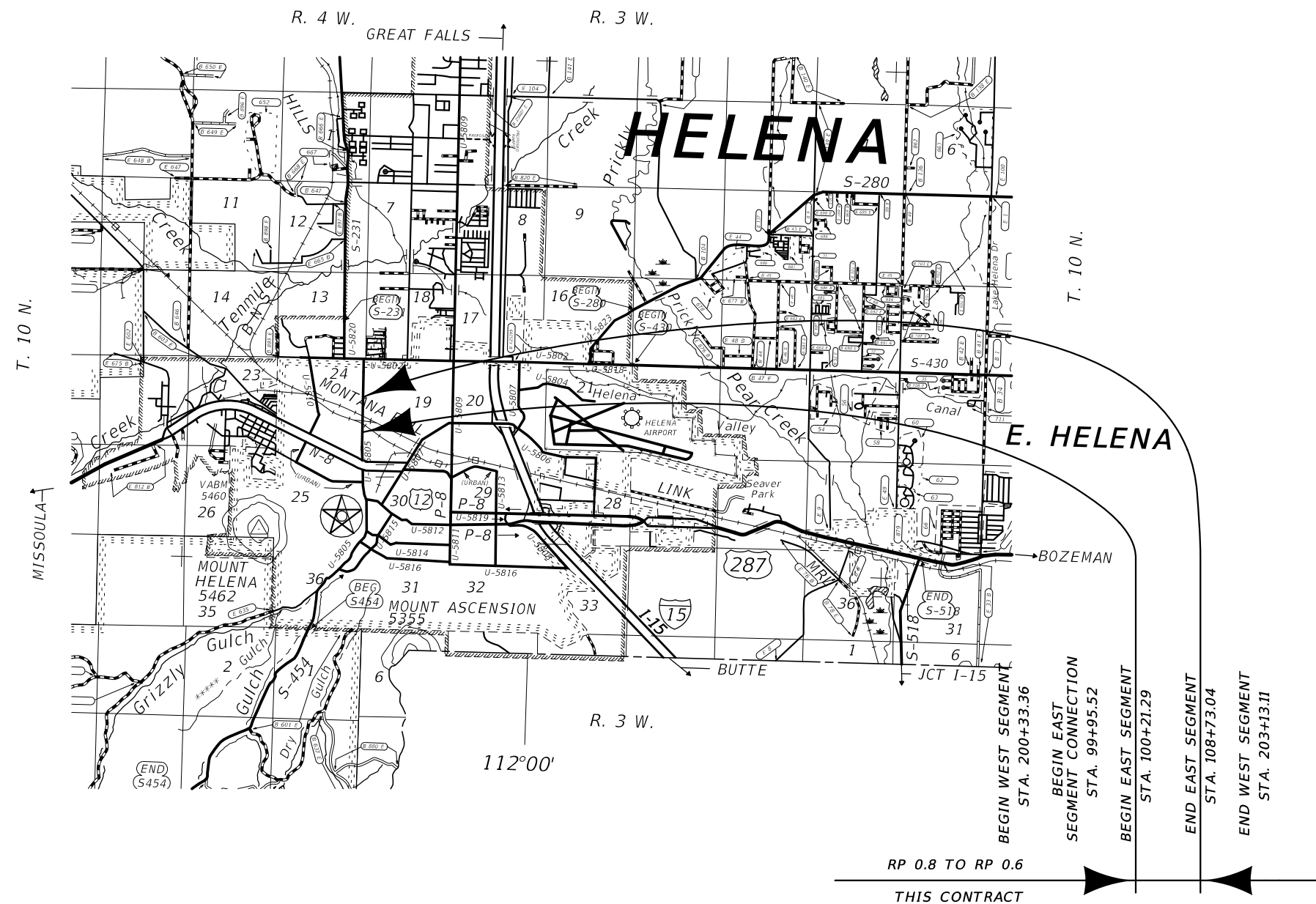
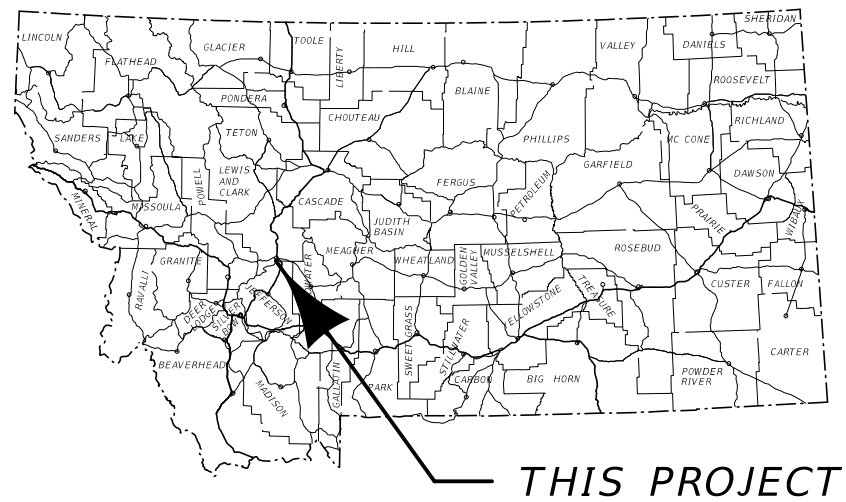


~~AWARD COPY~~

MONTANA DEPARTMENT OF TRANSPORTATION
FEDERAL AID PROJECT RRP-TA-RRS 5805(17)
RAILROAD / HIGHWAY CROSSING
SAFETY IMPROVEMENTS
RRXING-BENTON AVE-HELENA
EROSION CONTROL PLANS

LENGTH 0.2 MILES



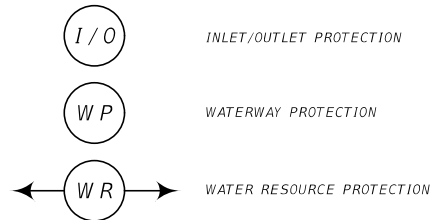
EROSION AND SEDIMENT CONTROL BMP'S

REFER TO THE MOST CURRENT RELEASE OF MDT'S EROSION & SEDIMENT CONTROL BMP MANUAL

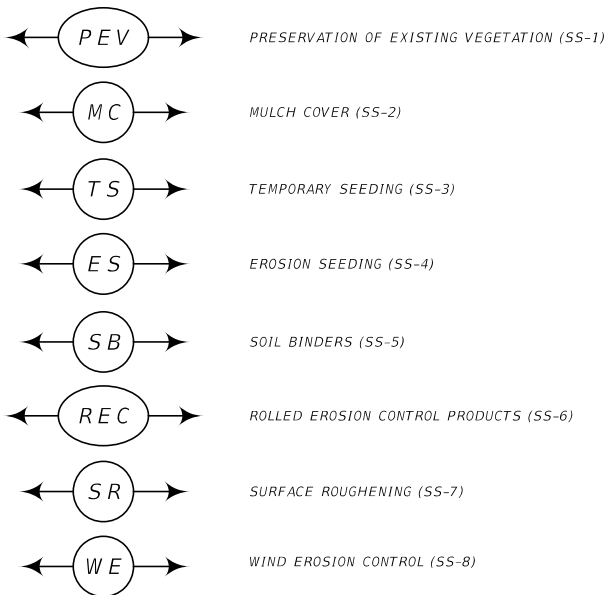
PEV (SS-1) SHOULD BE IDENTIFIED AND USED THROUGHOUT THE ENTIRE PROJECT IN ALL AREAS NOT DISTURBED BY CONSTRUCTION

TS (SS-3) AND ES (SS-4) SHOULD BE UTILIZED THROUGHOUT THE ENTIRE PROJECT

GENERAL BMP'S



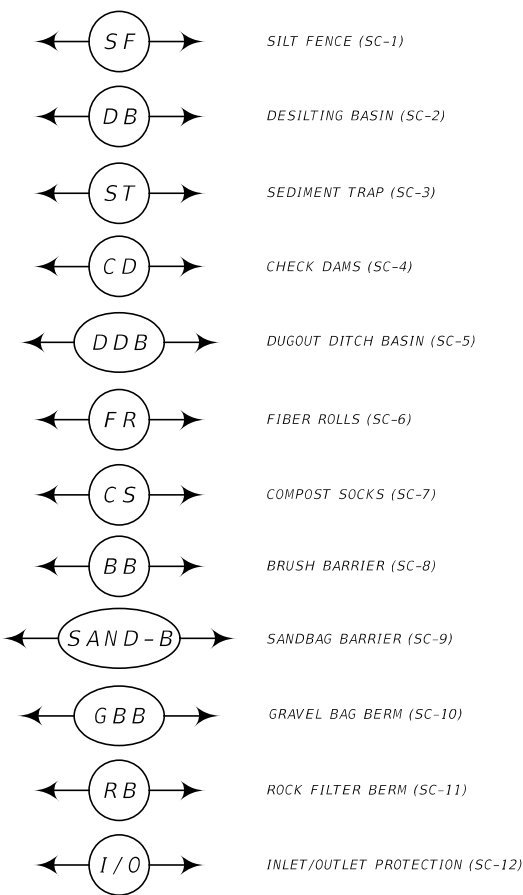
TEMPORARY SOIL STABILIZATION BMP'S (SS)



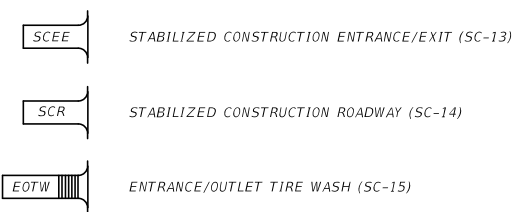
RUN-ON AND RUNOFF CONTROL (RC)



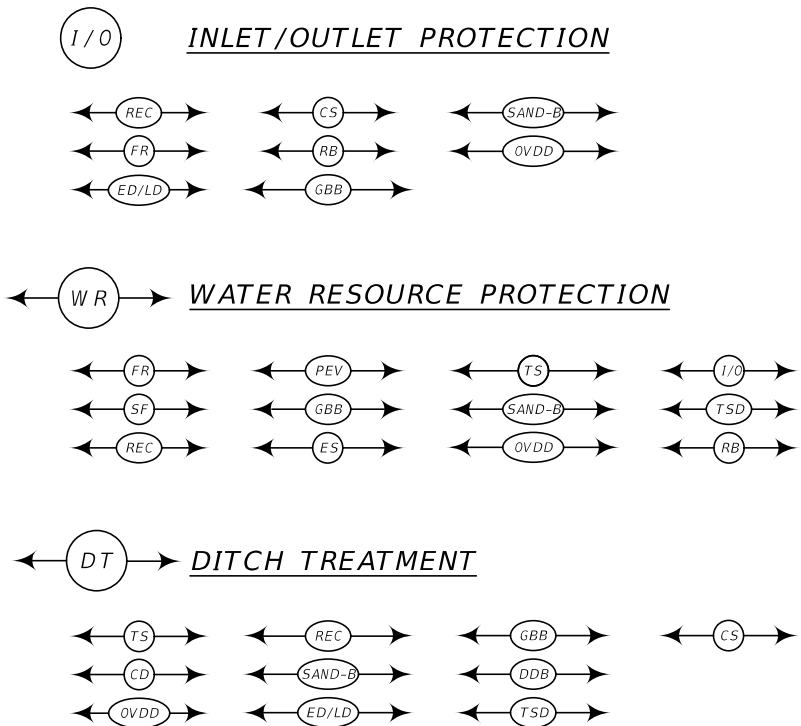
TEMPORARY SEDIMENT CONTROL BMP'S (SC)



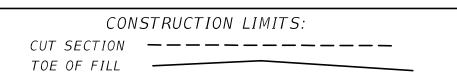
TRACKING CONTROL BMP'S (TC)



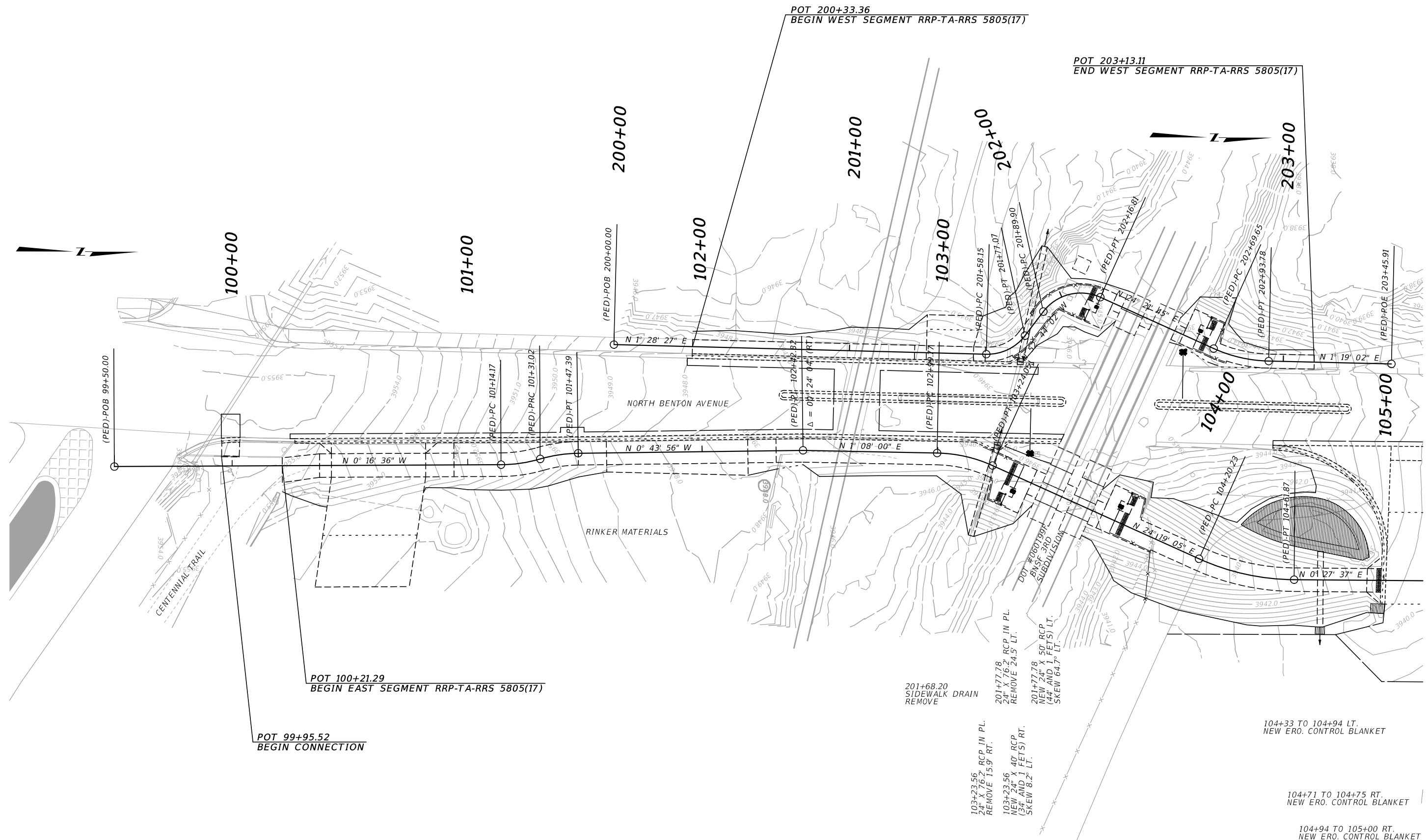
THE FOLLOWING BMP ALTERNATIVES ARE NOT COMPREHENSIVE
AND DO NOT SUPERSEDE MDT CONTRACT REQUIREMENTS
OR MANDATES AND REQUIREMENTS SPECIFIED BY OTHER
AUTHORIZED LOCAL, STATE, AND FEDERAL AGENCIES.



NOTE: BMP STATIONING IS APPROXIMATE



NOTE: BMP STATIONING IS APPROXIMATE
CONTOUR INTERVAL = 0.5 ft



NOTE: BMP STATIONING IS APPROXIMATE
CONTOUR INTERVAL = 0.5 ft

