

MONTANA DEPARTMENT OF TRANSPORTATION

FEDERAL AID PROJECT HSIP 24-3(64)96

CABLE GUARDRAIL, SIGNING, SEAL & COVER

SF 179 N-24 CURVE SFTY IMPRV

LEWIS & CLARK COUNTY

PROJECT DESIGN DATA

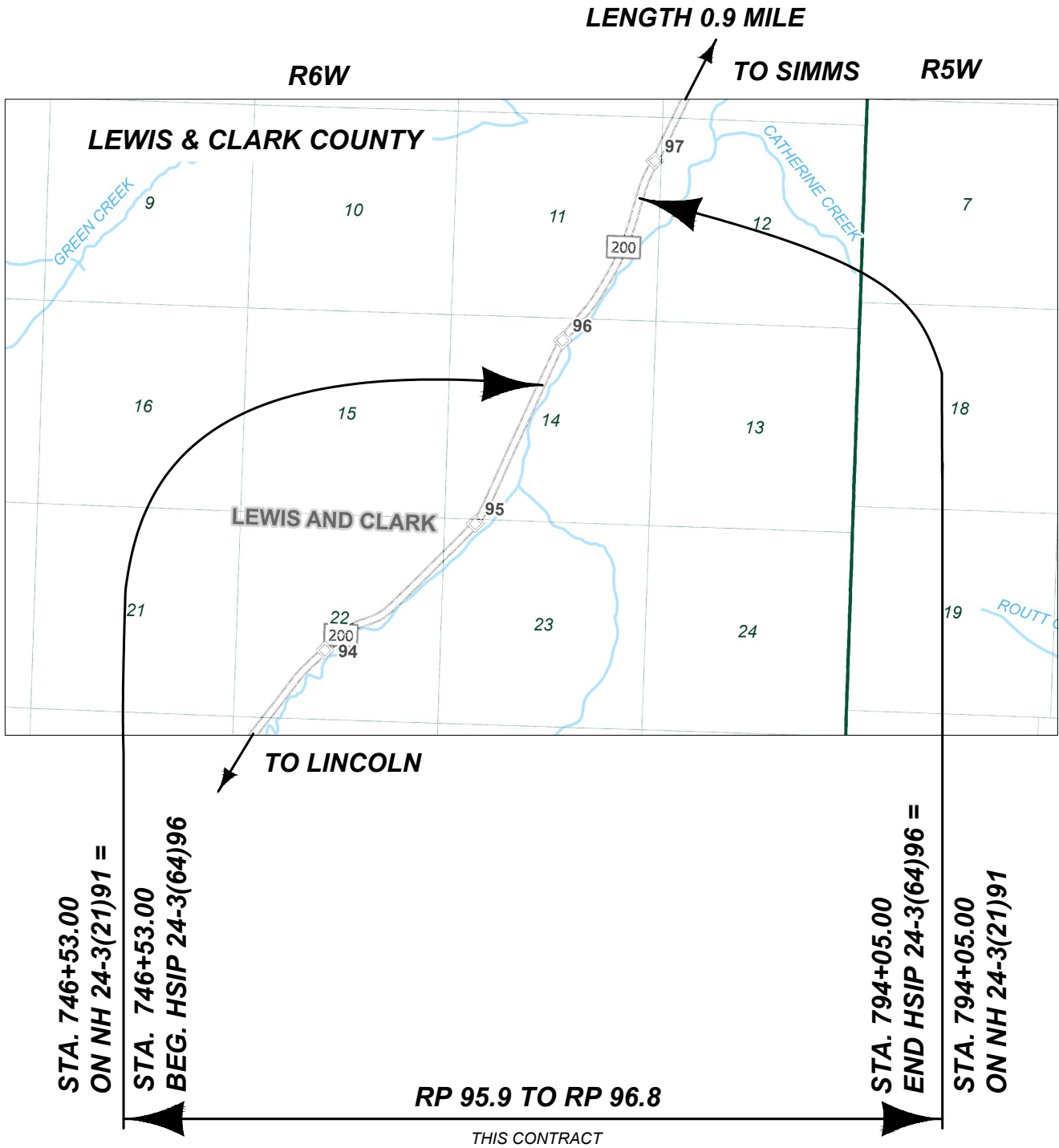
PRESENT	2024	A.D.T. = 1,480
LETTING	2026	A.D.T. = 1,510
DESIGN	2046	A.D.T. = 1,840
		D.H.V. = 230
		TRUCKS = 15.9%
		V. = 50 MPH
		18 KIP ESAL'S = 120 DAILY
		ANNUAL GROWTH RATE = 1.0%

ASSOCIATED PROJECT AGREEMENT NUMBERS

R/W	
I. C.	
P. E.	HSIP 24-3(63)96

SURFACING SOURCES -
CONTRACTOR FURNISHED

T16N



MONTANA DEPARTMENT OF TRANSPORTATION	
APPROVED BY: TRAFFIC AND SAFETY ENGINEER	
Signed by: <i>Gabe B. Priebe</i>	4/13/2026 DATE

SHEET NO.

1

TITLE

PROJECT NAME
SF 179 N-24 CURVE SFTY IMPRV

COUNTY

LEWIS AND CLARK

PROJECT ID

HSIP 24-3(64)96

UPN

9606000

DESIGNED BY

E. NELSON 08/2025

REVIEWED BY

D. RELPH 8/2025

CHECKED BY

J. SOLIDAY 8/2025

9606000SATTL001.DWG

MONTANA
Department of Transportation

9606000 SHEET SET

1/21/2026 10:37 AM

NOTES

TABLE OF CONTENTS

ROAD PLANS

SHEET NO.

TITLE SHEET	1
TABLE OF CONTENTS	2
NOTES	2
CENTERLINE COORDINATE TABLE	2
CONTROL DIAGRAM & LEVEL DATA	3
TYPICAL SECTIONS	4
SUMMARIES	5
SURFACING	5
GUARDRAIL	5
RUMBLE STRIPS	5
PAVEMENT MARKINGS	5

DETAILS

6-13

HIGH TENSION CABLE GUARDRAIL	6
GEOMETRIC	7-13

PLAN SHEETS

14

SIGNING PLANS

SUMMARY	S1
SPECIFICATIONS	S2
DETAILS	S3
PLANS	S4

BASIS OF PLAN QUANTITIES

(QUANTITIES FOR ESTIMATING PURPOSES ONLY)	
BITUMINOUS MATERIAL	= 8.5 LBS. PER GAL.
EMULSIFIED ASPHALT - FOG SEAL (RUMBLE STRIPS)	= 0.10 GAL. PER SQ. YARD (UNDILUTED)
SEAL	= 0.42 GAL. PER SQ. YARD
COVER	= 25 LBS. PER SQ. YARD

AS-BUILTS

FOR HORIZONTAL ALIGNMENT AND STATIONING, REFER TO THE FOLLOWING "AS-BUILT" PROJECT(S):

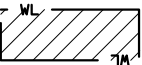
- NH 24-3(21)91 (1995)
- NH 24-3(34)91 (2009)

UTILITIES

CALL THE UTILITIES UNDERGROUND LOCATION CENTER (811) OR OTHER NOTIFICATION SYSTEM FOR THE MARKING AND LOCATION OF ALL LINES AND SERVICES BEFORE EXCAVATING. ALL CLEARANCES OR DEPTHS PROVIDED FOR UTILITIES ARE FROM EXISTING GROUND LINE.

WETLANDS

WETLANDS EXIST ADJACENT TO THE ROADWAY AND MAY EXIST BEYOND THE PROJECT LIMITS. WETLAND AREAS AND PERMANENT WETLAND IMPACT AREAS WITHIN THE PROJECT LIMITS HAVE BEEN DELINEATED AND ARE SHOWN ON THE PLANS. ANY ACTION IMPACTING WETLAND AREAS OUTSIDE OF THE PERMANENT IMPACT AREAS SHOWN IS THE RESPONSIBILITY OF THE CONTRACTOR.



DELINEATED WETLAND AREAS

WETLAND DELINEATION TABLE					
WETLAND DESIGNATION	STATION		WETLAND AREA (acres)		REMARKS
			DELINEATED AREA	PERMANENT IMPACTED AREA	
	FROM	TO			
WL-1	762+61.28	763+36.92	0.008	0.000	LT.
WL-2	766+80.86	767+67.12	0.008	0.000	LT.
TOTAL			0.02	0.00	

CENTERLINE COORDINATE TABLE - MONTANA-200 (N24)				
STATION	DESCRIPTION	NORTHING OR Y COORDINATE	EASTING OR X COORDINATE	REMARKS
741+79.00	BOA	1,067,576.4690	1,265,360.0590	
746+53.00	POT	1,068,006.9032	1,265,558.5579	BEGIN PROJECT
750+87.07	TS	1,068,401.0810	1,265,740.3370	
752+87.07	SC	1,068,581.1880	1,265,827.2380	
756+08.74	CS	1,068,851.9110	1,266,000.2540	
758+08.74	ST	1,069,006.4220	1,266,127.2040	
763+27.69	TS	1,069,401.5760	1,266,463.5930	
765+27.69	SC	1,069,555.3570	1,266,591.4480	
767+89.35	CS	1,069,767.5370	1,266,744.4240	
769+89.35	ST	1,069,937.4320	1,266,849.9300	
774+49.24	PC	1,070,330.9160	1,267,087.9880	
788+95.91	PT	1,071,649.6100	1,267,673.4710	
794+05.00	POT	1,072,137.2097	1,267,819.8247	END PROJECT
797+01.95	PC	1,072,421.6240	1,267,905.1920	
798+59.00	EOA	1,072,571.7140	1,267,951.4190	

SHEET NO.

2

TABLE OF CONTENTS & NOTES

PROJECT NAME
SF 179 N-24 CURVE SFTY IMPRV

COUNTY

LEWIS AND CLARK

PROJECT ID

HSIP 24-3(64)96

UPN

9606000

DESIGNED BY

E. NELSON 08/2025

REVIEWED BY

D. RELPH 08/2025

CHECKED BY

J. SOLIDAY 8/2025

9606000SATTL001.DWG



9606000 SHEET SET

1/21/2026 10:37 AM

CONTROL DIAGRAM

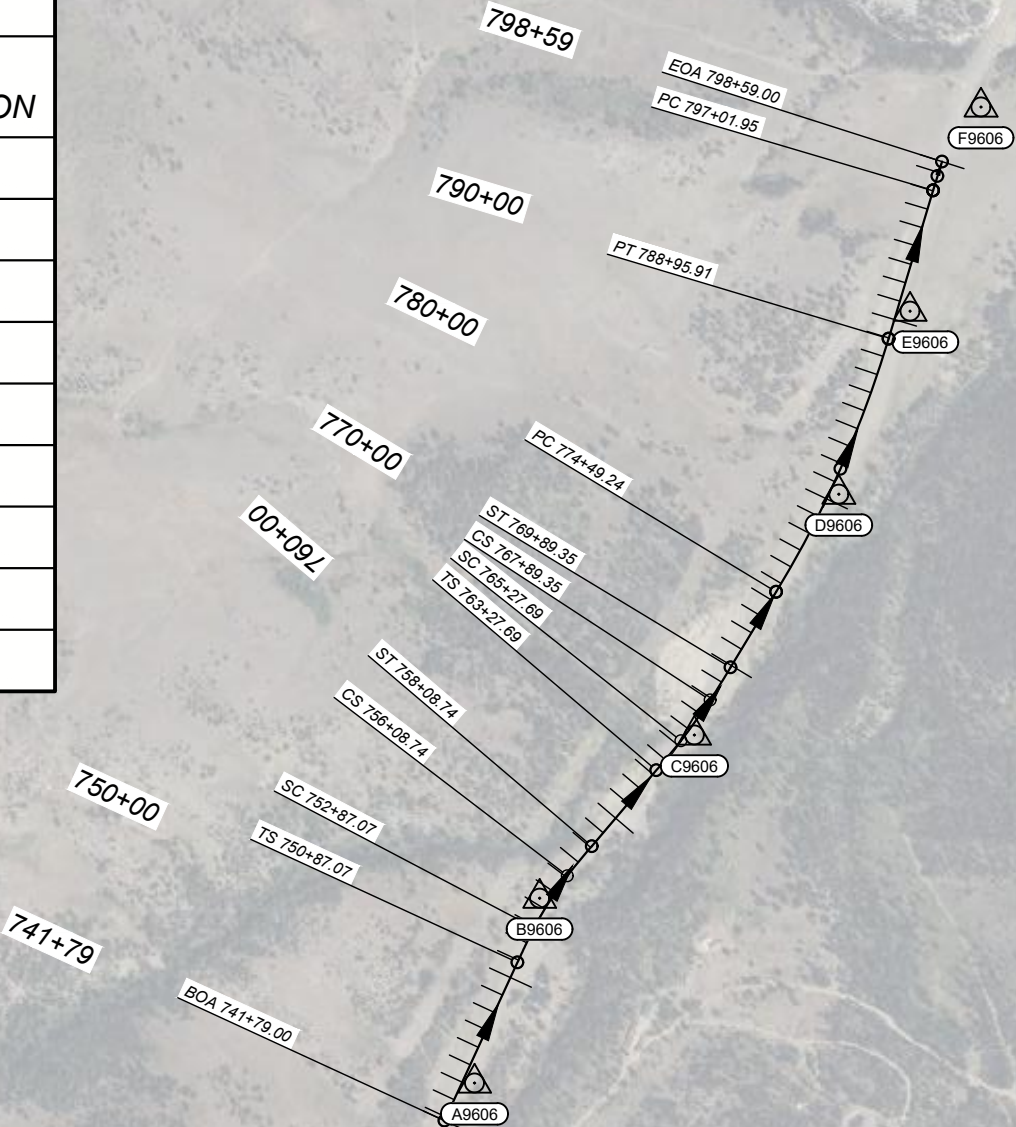
SCALE: 1" = 1000'

NOTE:
THIS PROJECT IS ON THE MONTANA COORDINATE SYSTEM NAD83-2011
NORTHING AND EASTING COORDINATES ARE EXPRESSED IN UNITS OF
INTERNATIONAL FEET AND ELEVATIONS ARE IN UNITS OF U.S. SURVEY FEET.
DIMENSIONS SHOWN ON THE PLANS ARE GRID. ALL SURVEY AND STAKING
REQUIRE THE USE OF A COMBINATION SCALE FACTOR (CSF) TO CONVERT GRID
DIMENSIONS TO GROUND DIMENSIONS (GRID DISTANCE / CSF = GROUND
DISTANCE). THE CSF FOR THIS PROJECT IS 0.99918207

BEARING SOURCE
GRID -- MONTANA COORDINATE SYSTEM NAD 83-2011

LEVEL DATUM SOURCE
NAVD 88 (GNSS DERIVED ELEVATIONS USING GEOID18 AND HOLDING BMS C9606)

CONTROL ABSTRACT			
POINT NAME/NUMBER	N OR Y COORDINATE	E OR X COORDINATE	POINT ELEVATION
A95	1,065,938.323	1,264,544.898	4,561.95
A9606	1,067,772.481	1,265,516.799	4,539.45
B95	1,066,295.054	1,264,815.325	4,548.96
B9606	1,068,735.016	1,265,855.939	4,501.23
C95	1,066,553.850	1,264,843.090	4,547.03
C9606	1,069,585.470	1,266,661.873	4,455.80
D9606	1,070,839.319	1,267,413.936	4,481.49
E9606	1,071,792.680	1,267,784.931	4,493.62
F9606	1,072,856.092	1,268,154.639	4,472.28



SHEET NO.

3

CONTROL DIAGRAM

PROJECT NAME
SF 179 N-24 CURVE SFTY IMPRV

COUNTY

LEWIS AND CLARK

PROJECT ID

HSIP 24-3(64)96

UPN

9606000

DESIGNED BY

E. NELSON 08/2025

REVIEWED BY

D. RELPH 08/2025

CHECKED BY

J. SOLIDAY 8/2025

9606000SATRV001.DWG



9606000 SHEET SET

11/29/2025 8:51 AM

TYPICAL SECTION NO. 1
MAINLINE

746+53.00 ONLY

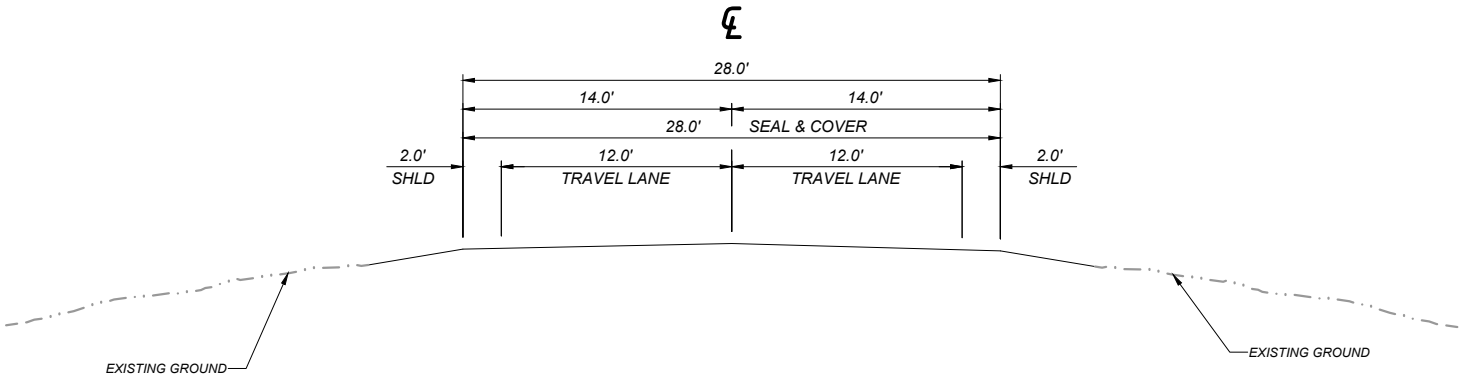
746+53.00 TO 747+13.00

794+05.00 ONLY

BEGIN PROJECT

TRANS. TYP. NO. 1 TO TYP. NO. 2

END PROJECT



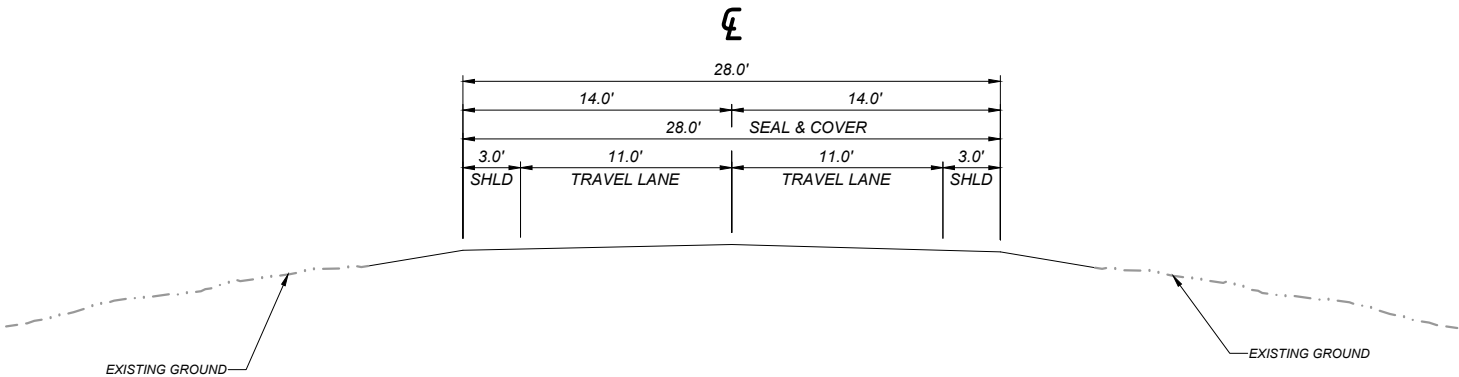
QUANTITIES			
UNIT	AGGREGATE	UNIT	BITUMINOUS MATERIAL
	COVER		EMULSIFIED ASPHALT SEAL
AREA square feet		square yards PER STATION	311
cubic yards PER STATION		tons PER STATION	0.56
tons PER STATION		gals. PER STATION	
square yards PER STATION	311		

TYPICAL SECTION NO. 2
MAINLINE

747+13.00 TO 793+45.00

793+45.00 TO 794+05.00

TRANS. TYP. NO. 2 TO TYP. NO. 1



QUANTITIES			
UNIT	AGGREGATE	UNIT	BITUMINOUS MATERIAL
	COVER		EMULSIFIED ASPHALT SEAL
AREA square feet		square yards PER STATION	311
cubic yards PER STATION		tons PER STATION	0.56
tons PER STATION		gals. PER STATION	
square yards PER STATION	311		

SHEET NO.

4

TYPICAL SECTIONS

PROJECT NAME
SF 179 N-24 CURVE SFTY IMPRV

COUNTY

LEWIS AND CLARK

PROJECT ID

HSIP 24-3(64)96

UPN

9606000

DESIGNED BY	08/2025
REVIEWED BY	08/2025
CHECKED BY	8/2025
J. SOLIDAY	9606000SATYP001.DWG



9606000 SHEET SET

11/29/2025 8:50 AM

AWARD COPY

SUMMARY

SHEET NO.

5

SUMMARY

SURFACING									
STATION		linear feet				FOR	AGGREGATE	BITUMINOUS MATERIAL	REMARKS
		GROSS	NET	+	-		sq. yards	tons	
							COVER TYPE 1	EMULSIFIED ASPHALT CHFRS-2P	
FROM	TO								
746+53.00	747+13.00	60.00	60.00				187	0.3	TRANS TYP. NO. 1 TO TYP. NO. 2
747+13.00	793+45.00	4,632.00	4,632.00				14,406	25.9	TYP. NO. 2
793+45.00	794+05.00	60.00	60.00				187	0.3	TRANS TYP. NO. 2 TO TYP. NO. 1
TOTAL		4,752.00	4,752.00	~	~		14,780	26.5	

PAVEMENT MARKINGS				
ITEM	UNIT	INTERIM APPLICA-TION #	FINAL APPLICA-TION	TOTAL
STRIPING - WHITE PAINT	gallon	44		44
STRIPING - YELLOW PAINT	gallon	24		24
STRIPING - WHITE EPOXY	gallon		58	58
STRIPING - YELLOW EPOXY	gallon		31	31
FINAL SWEEP AND BROOM	course mile			0.9


BASED ON 1 APPLICATIONS.

MODIFIED SHOULDER RUMBLE STRIPS				
STATION		miles	gals	REMARKS
		RUMBLE STRIPS	EMULSIFIED ASPHALT FOG SEAL #	
		INTERMITTENT		
FROM	TO			
747+13.00	793+45.00	0.9	53	LT.
747+13.00	793+45.00	0.9	53	RT.
SUBTOTAL		1.8	106	
TOTAL		1.8	~	

FOR INFORMATION ONLY, INCLUDE IN THE COST OF RUMBLE STRIPS

GUARDRAIL #						
STATION		linear feet		each		REMARKS
		HIGH-TENSION CABLE RAIL		CABLE GUARDRAIL TERMINAL SECTION		
FROM	TO	LEFT	RIGHT	LEFT	RIGHT	
NEW RAIL						
753+14.90	759+21.30		527		2	
763+67.86	781+60.20		1,727		2	
SUBTOTAL		~	2,254	~	4	
TOTAL		2,254		4		

SEE DETAIL



MONTANA

Department of Transportation

DESIGNED BY

E. NELSON

REVIEWED BY

D. RELPH

CHECKED BY

J. SOLIDAY

PROJECT NAME

SF 179 N-24 CURVE SFTY IMPRV

COUNTY

LEWIS AND CLARK

PROJECT ID

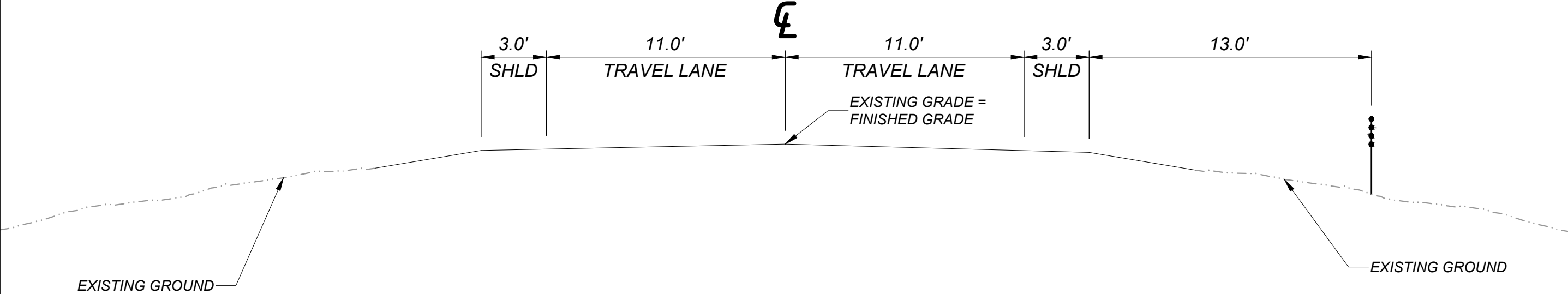
HSIP 24-3(64)96


UPN

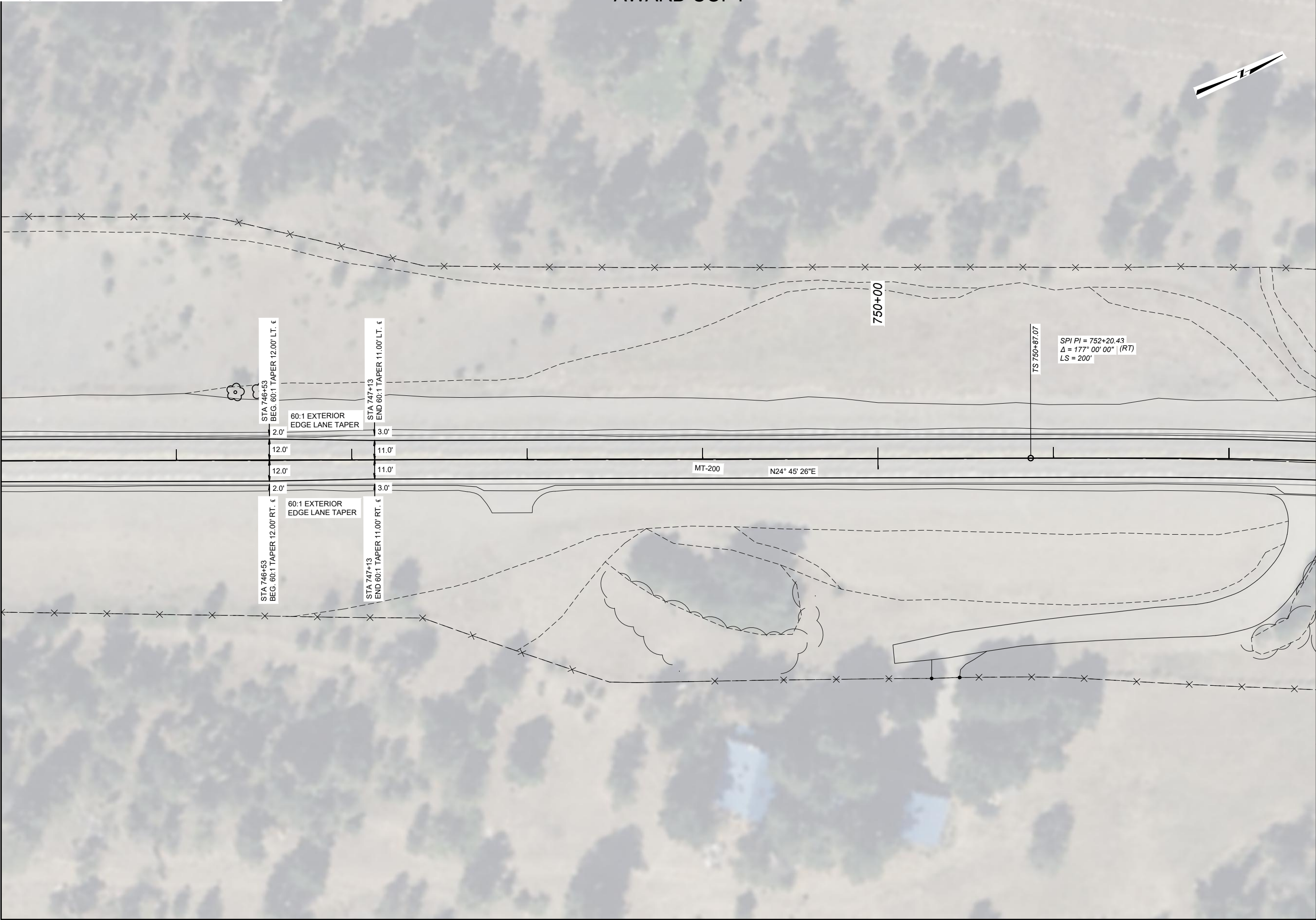
9606000


1/22/2026 9:57 AM

AWARD COPY
DETAIL



SHEET NO. 6		HIGH TENSION CABLE GUARDRAIL DETAIL	
 9606000 SHEET SET	DESIGNED BY E. NELSON		PROJECT NAME SF 179 N-24 CURVE SFTY IMPRV
	REVIEWED BY D. RELPH		COUNTY LEWIS AND CLARK
	CHECKED BY J. SOLIDAY		PROJECT ID HSIP 24-3(64)96
	11/29/2025 8:50 AM		TUPN 9606000



SHEET NO.		7	
GEOMETRIC DETAIL		SHEET 1 OF 7	
		SCALE 1" = 50'	
 MONTANA Department of Transportation	DESIGNED BY	PROJECT NAME	
	E. NELSON	SF 179 N-24 CURVE SFTY IMPRV	
	REVIEWED BY	COUNTY	
	D. RELPH	LEWIS AND CLARK	
9606000 SHEET SET	CHECKED BY	PROJECT ID	
	J. SOLIDAY	HSIP 24-3(64)96	
		UPN	
1/22/2026 9:54 AM		9606000	



8

GEOMETRIC DETAIL
SHEET 2 OF 7
SCALE 1" = 50'

LEWIS AND CLARK

HSIP 24-3(64)96

9606000

E: NELSON	06/2023
REVIEWED BY	

CHECKED BY

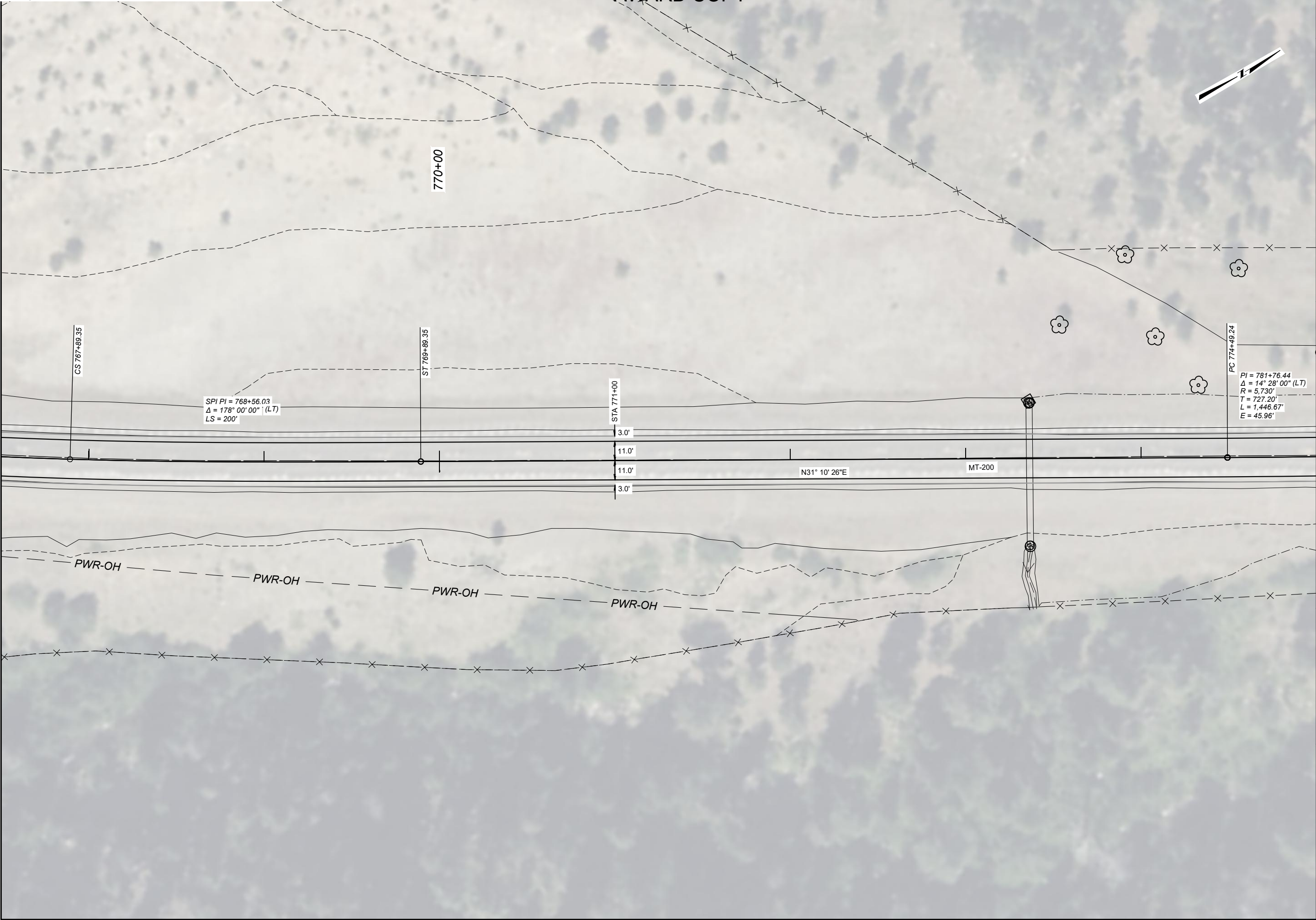
9606000GEDET001.DWG


9606000 SHEET SET

1/22/2026 9:54 AM




SHEET NO.		9	
GEOMETRIC DETAIL		SHEET 3 OF 7	
		SCALE 1" = 50'	
PROJECT NAME		SF 179 N-24 CURVE SFTY IMPRV	
COUNTY		LEWIS AND CLARK	
PROJECT ID		HSIP 24-3(64)96	
UPN		9606000	
DESIGNED BY	08/2025	REVIEWED BY	08/2025
E. NELSON		D. RELPH	
CHECKED BY	8/2025	9606000GEDET001.DWG	
J. SOLIDAY		MONTANA Department of Transportation	
9606000 SHEET SET		1/22/2026 9:54 AM	




SHEET NO.		10	
GEOMETRIC DETAIL		SHEET 4 OF 7	
		SCALE 1" = 50'	
	DESIGNED BY	E. NELSON	08/2025
	REVIEWED BY	D. RELPH	08/2025
	CHECKED BY	J. SOLIDAY	8/2025
	DATE	1/22/2026 9:54 AM	
PROJECT NAME		SF 179 N-24 CURVE SFTY IMPRV	
COUNTY		LEWIS AND CLARK	
PROJECT ID		HSIP 24-3(64)96	
UPN		9606000	

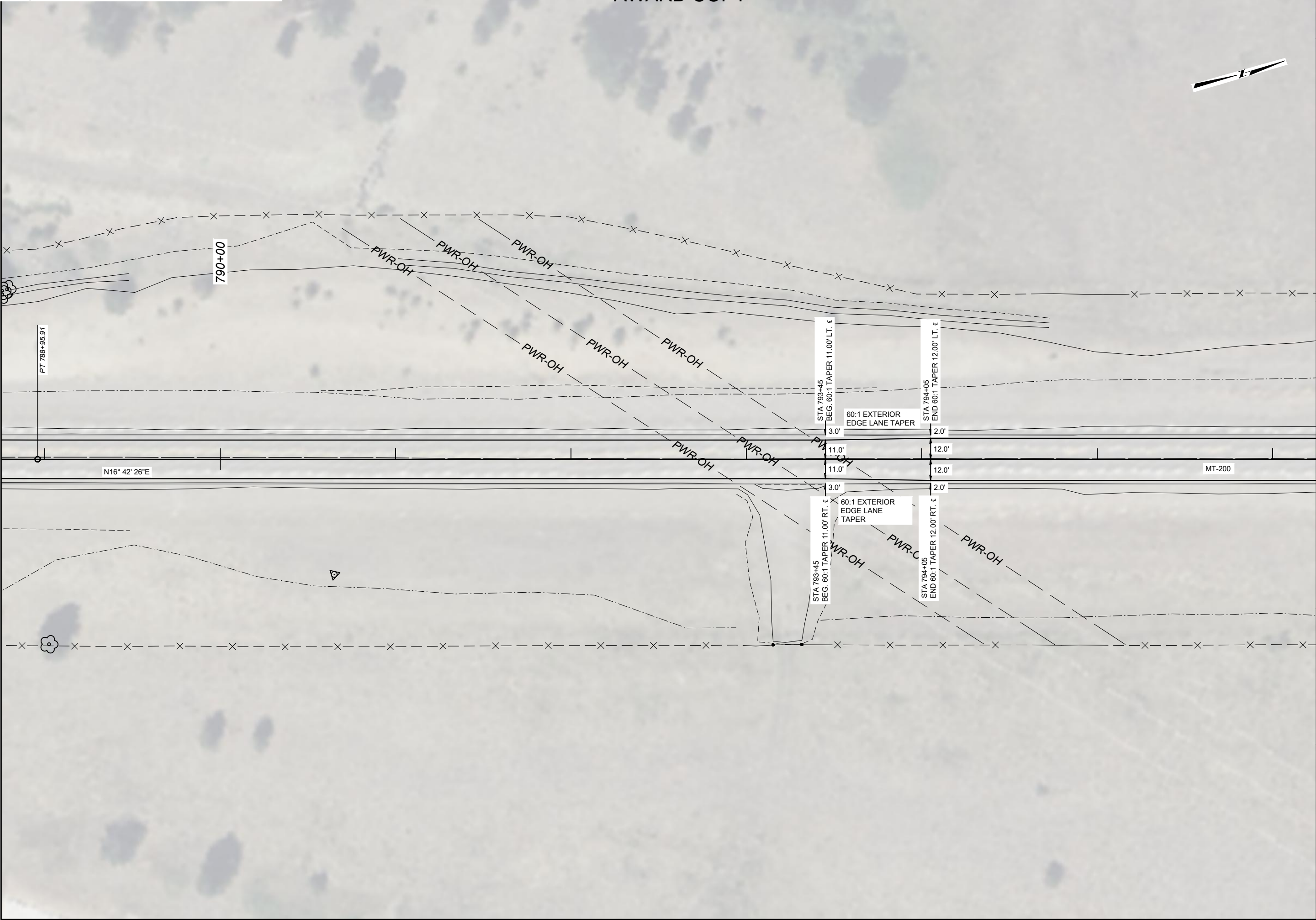



SHEET NO.		11		GEOMETRIC DETAIL SHEET 5 OF 7 SCALE 1" = 50'	
 MONTANA Department of Transportation		DESIGNED BY		PROJECT NAME	
		E. NELSON		SF 179 N-24 CURVE SFTY IMPRV	
		REVIEWED BY		COUNTY	
		D. RELPH		LEWIS AND CLARK	
9606000 SHEET SET		CHECKED BY		PROJECT ID	
		J. SOLIDAY		HSIP 24-3(64)96	
		8/2025		UPN	
		9606000GEDET001.DWG		96060000	
1/22/2026 9:54 AM					



 MONTANA Department of Transportation		DESIGNED BY	PROJECT NAME	
		E. NELSON	SF 179 N-24 CURVE SFTY IMPRV	
REVIEWED BY		COUNTY	GEOMETRIC DETAIL	
D. RELPH		LEWIS AND CLARK	SHEET 6 OF 7	
CHECKED BY		PROJECT ID	SCALE 1" = 50'	
J. SOLIDAY		UPN		
9606000 SHEET SET		9606000GEDET001.DWG		
1/22/2026 9:54 AM				

SHEET NO.
12



 MONTANA Department of Transportation		DESIGNED BY	E. NELSON	08/2025
		REVIEWED BY	D. RELPH	08/2025
9606000 SHEET SET		CHECKED BY	J. SOLIDAY	8/2025
		9606000GEGEDT001.DWG		
PROJECT NAME		SF 179 N-24 CURVE SFTY IMPRV		
COUNTY		LEWIS AND CLARK		
PROJECT ID		HSIP 24-3(64)96		
UPN		9606000		

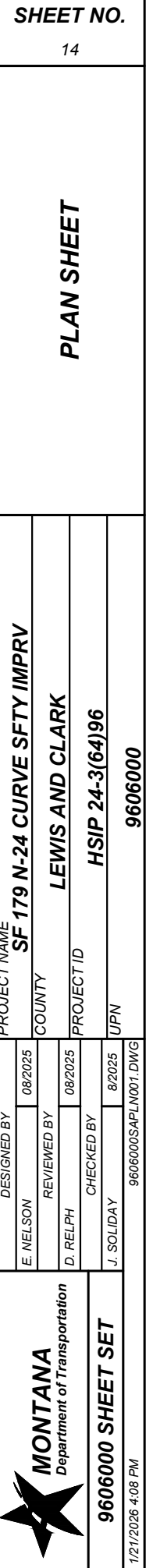
SHEET NO.

13

GEOMETRIC DETAIL

SHEET 7 OF 7

SCALE 1" = 50'



PSE

PRELIMINARY

NOTES AND ABBREVIATIONS:

MOUNTING HEIGHT REQUIREMENTS: MOUNTING HEIGHTS SHOWN REFER TO THE BOTTOM OF THE MAJOR PANEL. SEE DETAILED DRAWINGS 619-00 & 619-08

SIGNING LOCATIONS ARE APPROXIMATE. ENGINEERING PROJECT MANAGER TO FIELD ADJUST AS NECESSARY.

BBR = BACKBRACING REQUIRED:

- FOR WOOD POLE SEE DET. DWG 619-22
- FOR STEEL POST 2" X 2" X 1/4" REQUIRED. SEE DET. DWG 619-16
- FOR STRUCTURAL STEEL POST 2 3/4" X 2 3/8" EXTRUDED "T" SECTION BACKBRACE REQUIRED. SEE DET. DWG 619-19
- FOR CANTILEVER POST, SEE DET. DWG 619-18
- FOR GUIDE SIGN PANELS, USE EXTRUDED "T" SECTION BACKBRACE. SEE DET. DWG 619-04

USE HARDWARE MEETING REQUIREMENTS OF SECTION 704


BGR = BEHIND GUARDRAIL

MBB = MOUNT BACK TO BACK

RSFO = REPLACE SIGN FACE ONLY


FY = FLUORESCENT YELLOW SHEETING REQUIRED

SUMMARY SIGNING & DELINEATION QUANTITIES		
MATERIAL	TOTAL	UNIT
SIGNS-ALUM REFL SHEET XI	32.0	SQFT
SIGNS-ALUM SHEET INCR XI	22.8	SQFT
REMOVE SIGN	3	EACH
REMOVE SIGN-GUIDE	1	EACH
POSTS-STEEL U SIGN	20	LB
POLES-TREATED WOOD 4 IN	56	LNFT
DELINEATOR DES PANEL A	70	EACH

DELINEATION SPECIFICATIONS		
SYMBOL	DESIGN	TOTAL
	Panel A	70









SHEET NO.
S1


SIGNING NOTES AND
SUMMARY FRAMES

 MONTANA <i>Department of Transportation</i>	DESIGNED BY		07/2025	PROJECT NAME
	REVIEWED BY			SF 179 N-24 CURVE SFTY IMPRV
	CHECKED BY		07/2025	COUNTY
	N. THOLT			LEWIS AND CLARK
SIGNING PLANS		07/2025		PROJECT ID
		N. STYREN		HSIP 24-3(64)96
		9606000SISUM001.DWG		UPN
				9606000
1/22/2026 8:41 AM				

PSE

PRELIMINARY

SIGN LOCATION			PANEL SPECIFICATIONS					SIGN ASSEMBLY SPECIFICATIONS										SIGN ASSEMBLY QUANTITIES												ADDITIONAL INFORMATION					
STATION / R.P.	LFT / MDN / RGT / OH	ACTION	SIGN NO. (MUTCD / MT)	PANEL SIZE (INCHES)			FY OR FYG	BACKBRACING REQ'D / ANGLE IRON REQ'D	MOUNT BACK TO BACK	FEET CLEARANCE / OFFSET (SHOULDER TO EDGE OF SIGN)	TYPE OF SUPPORT	SUPPORT SPACING	MOUNTING HEIGHT	FOUNDATION DEPTH	FEET SUPPORT LENGTH (ESTIMATED)			CANTILEVER	BREAKAWAY TYPE	BEHIND GUARDRAIL	PANEL (SQ. FT.)		WOOD POLE (LNR. FT.)		STEEL POST (LBS.)				# OF BREAKAWAYS	REMOVE		RESET		SIGN IMAGE	REMARKS
				W	X	H									X	Y	Z				SHEET ALUMINUM	SHEET ALUMINUM INCREMENT	4" TOP DIA.	5" TOP DIA.	ROUND TUBULAR	SQUARE TUBULAR	STRUCTURAL STEEL	"U" POST		SIGN	GUIDE	SIGN	GUIDE		
749+37	R	NEW	W1-5R	30	X	30	FY			10.0	4" Treated Wood Pole		5.6	3.0	13.6						6.3		14												
	R	NEW	W13-1P	18	X	18	FY														2.3												Advisory Speed 60 MPH		
754+34	R	REPLACE	D10-2 (2x)	10	X	27		MBB	4.0		2.0lb Steel U Post		4.0	3.0	10.0						3.8					20		1					MP 96		
765+23	R	REPLACE	W14-3	48	X	36	FY	BBR	10.0		4" Treated Wood Pole		5.0	3.0	12.8						5.5		14						1						
775+24	L	REPLACE	W14-3	48	X	36	FY	BBR	10.0		4" Treated Wood Pole		5.0	3.0	12.8						5.5		14						1						
781+11	R	RSFO	IS12-8	78	X	42															22.8								1						
790+46	L	NEW	W1-5R	30	X	30	FY		10.0		4" Treated Wood Pole		5.6	3.0	13.6						6.3		14												
	L	NEW	W13-1P	18	X	18	FY														2.3												Advisory Speed 60 MPH		
PROJECT TOTALS																					32.0	22.8	56						20		3	1			



SIGNING PLANS

1/22/2026 8:41 AM

DESIGNED BY

S. ERETH

REVIEWED BY

N. THOLT

CHECKED BY

N. STYREN

07/2025

07/2025

07/2025

9606000\SISUM001.DWG

PROJECT NAME

SF 179 N-24 CURVE SFTY IMPRV

COUNTY

LEWIS AND CLARK

PROJECT ID

HSIP 24-3(64)96

UPN

9606000

SHEET NO.

S2

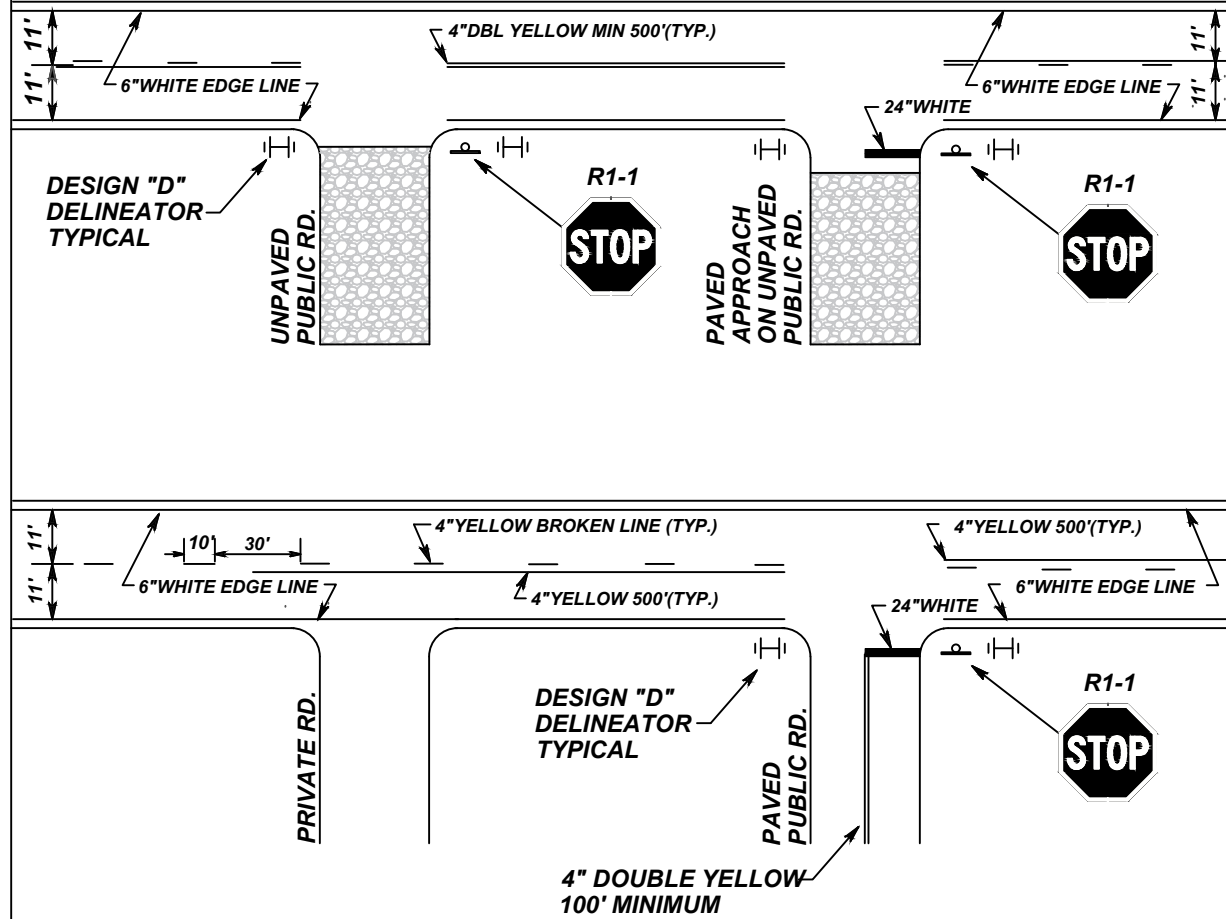
SIGN LOCATIONS AND SPECIFICATIONS

PRELIMINARY

The diagram illustrates seven different rumble strip configurations used in road construction:

- DOUBLE YELLOW RUMBLE STRIP:** A standard double yellow line with rumble strips. Cross-section shows a 4" wide, 12" high strip.
- YELLOW SKIP RUMBLE STRIP:** A yellow line with alternating rumble and non-rumble sections. Cross-section shows a 4" wide, 4" high strip.
- DOUBLE YELLOW TAPERED ISLAND RUMBLE STRIP:** A double yellow line with a tapered island. A 24" yellow taper is indicated. Cross-section shows a 4" wide, 12" high strip.
- DOUBLE YELLOW BULLNOSE ISLAND RUMBLE STRIP:** A double yellow line with a bullnose island. A 30° taper is indicated. Cross-section shows a 4" wide, 12" high strip.
- SINGLE NO PASS RUMBLE STRIP:** A single yellow line with rumble strips. Cross-section shows a 4" wide, 12" high strip.
- TWO WAY LEFT TURN LANE RUMBLE STRIP:** A double yellow line with rumble strips for two-way left-turn lanes. Cross-section shows a 4" wide, 12" high strip.
- DOUBLE YELLOW TURN LANE RUMBLE STRIP:** A double yellow line with rumble strips for turn lanes. Cross-section shows a 4" wide, 12" high strip.

NO SCALE



**NOTE: FINAL CENTERLINE CONFIGURATION
AND NO PASSING ZONES
TO BE DETERMINED BY THE
PROJECT MANAGER.**

**ALL PAVEMENT MARKINGS
TO BE EPOXY UNLESS
OTHERWISE SPECIFIED.**

NOTES:

- ① **SEE CENTERLINE RUMBLE STRIPS DTL. DWG. NO. 411-05 FOR ADDITIONAL INFORMATION.**
- ② **ALL PAVEMENT MARKINGS ARE TO CONFORM TO THE REQUIREMENTS OF THE "MANUAL ON UNIFORM TRAFFIC CONTROL DEVICES" AND "STANDARD HIGHWAY SIGNS" PUBLICATIONS, FROM THE FEDERAL HIGHWAY ADMINISTRATION.**
- ③ **SEE CENTERLINE PAVEMENT MARKINGS FOR RURAL HIGHWAYS MEMO DATED JUNE 18, 2019 FOR APPLICATION METHODOLOGY**
- ④ **DASHED LINES WILL HAVE A 10:30 SKIP IN RURAL LOCATIONS, AND A 9:15 SKIP IN URBAN LOCATIONS**

63

DETAIL

PROJECT NAME	COUNTY
SF 179 N-24 CURVE SFTY IMPRV	

LEWIS AND CLARK

HSIP 24-3(64)96

9606000

DESIGNED BY	
S. ERETH	07/2025

N. THOLT	07/2025
----------	---------

CHECKED BY	
N. STYREN	07/2025

9606000SISUM001.DWG



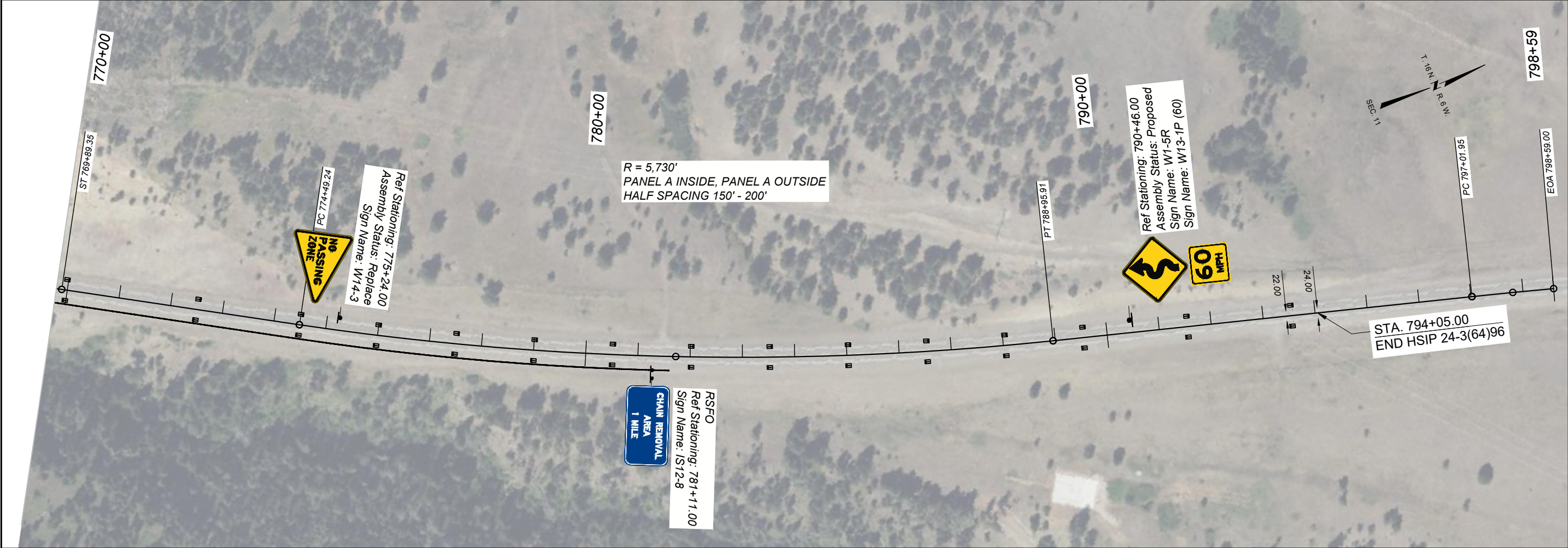
MONTANA
Department of Transportation

SIGNING PLANS

1/22/2026 8:41 AM

PSE

PRELIMINARY



SHEET NO.				PLAN SHEET			
S4							
PROJECT NAME		COUNTY		PROJECT ID		UPN	
SF 179 N-24 CURVE SFTY IMPRV		LEWIS AND CLARK		HSIP 24-3(64)96		96060000	
DESIGNED BY		REVIEWED BY		CHECKED BY		1/22/2026 8:43 AM	
S. ERETH		N. THOLT		N. STYREN			
07/2025		07/2025		07/2025			
MONTANA		SIGNING PLANS					
Department of Transportation							