

Josh Dold, P.E.
Missoula District Design Project Manager
Helena Road Design Section
Montana Department of Transportation
P.O. Box 201001
Helena, MT 59602
406-444-6385 | jdold@mt.gov

To:
[Concrete Beam Manufacturers]

Subject: Request for Bids – Precast Concrete Beams, Bearings, Anchor Bolts, and Hardware for S-482 Repair – South of Libby

The Montana Department of Transportation (MDT) is soliciting a formal bid quote for the fabrication and delivery of structural components required for the **S-482 Repair – South of Libby** bridge project. Quotes must be emailed directly to Josh Dold jdold@mt.gov. Emailed quotes must be received by 9:00 AM Mountain Standard Time on Monday May 18, 2026, in order to be considered. Questions regarding the bid package may be submitted by email prior to Wednesday May 13, 2026, at 9:00 AM Mountain Standard Time.

MDT requests a complete bid for the following items:

- **Precast concrete beams** — fabrication per MDT Standard Specifications and project-specific design requirements
- **Bearing assemblies** — including steel bearings as specified
- **Anchor bolts** — including associated hardware
- **Delivery** of all components to the designated project site near Libby, Montana
 - Deliver bearings, anchor bolts, and hardware on or before July 20, 2026.
 - Deliver prestressed girders on or before August 13, 2026.

STATE OF MONTANA
DEPARTMENT OF TRANSPORTATION
BID PACKAGE

TABLE OF CONTENTS
FEDERAL AID PROJECT(S) STPS 482-1(10)2

- 1. PROJECT DESCRIPTION.....3
- 2. PROCUREMENT OF PRESTRESSED CONCRETE GIRDERS AND BEARINGS3
- 3. ALTERNATE PRESTRESSED BEAM SECTIONS (REVISED 6-6-12)4

SPECIAL PROVISIONS

This Special Provision, MDT Standard Specifications, and the attached Partial Bridge Plans are essential parts of this Contract. They are complementary and describe and provide for a complete contract. If a discrepancy exists, the governing ranking is:

- 1) This Special Provision,
- 2) The MDT Standard Specifications ([link](#)),
- 3) The Partial Bridge Plans are provided for information only to provide design intent beyond what the Special Provision can provide. If a discrepancy exists, or for submittals as directed to the MDT Bridge Bureau, further clarification of the intent will be provided by the following contact(s):

Contact: Lenci Kappes, P.E. – MDT Bridge Bureau
Phone: 406-751-2033
Email: lkappes@mt.gov

Contact: Les Timmer – MDT Bridge Bureau
Phone: 406-444-6263
Email: ltimmer@mt.gov

The Engineering Project Manager (EPM) is Jason Livingston. His contact information is:

Contact: Jason Livingston – MDT Kalispell Construction
Phone: 406-471-0233
Email: jalivingston@mt.gov

1. PROJECT DESCRIPTION

This project is located in Lincoln County about 5 miles south of Libby in northwest Montana. The bridge carries Secondary 482 (Farm to Market Road) over Libby Creek at RP 2.60. The functional classification of the route is major collector, in a rural setting. MDT is expediting the procurement of certain superstructure elements. Work includes the design, fabrication, and delivery of the prestress concrete girders, steel bearings, and hardware as described in these Special Provisions and the included partial bridge plan set.

2. PROCUREMENT OF PRESTRESSED CONCRETE GIRDERS AND BEARINGS

A. Description. This work consists of the design, fabrication, furnishing, and delivery of Prestressed Concrete Beam-Type MTS-45 girders and steel bearings. The furnished components will form part of a multi-span superstructure with an overall centerline-to-centerline bridge length of 303 feet and an edge-of-slab deck width of 30 feet 4 inches.

This Special Provision will provide the quantity and all items for the quantity item “Prestressed Concrete Beam-Type MTS-45” and associated hardware as specified in this document. The Partial Bridge Plans show the layout and configuration of the bridge. Specifically, the bearings and beams are defined on the sheet “Standard Prestressed Concrete Beam Type MTS”. Further prestressed beam design parameters and load information are provided on sheet B11.

B. Materials. All materials for the beam and bearing assemblies shall meet the MDT Standard Specifications Section 106.09.

- 1) Prestressed Concrete Girders. Provide Prestressed Concrete Beam-Type MTS-45 girders meeting all requirements of the MDT Standard Specification Section 553.
- 2) Steel Rocker Bearing Assemblies. Provide steel bearings as shown in the Partial Bridge Plans and per MDT Standard Specifications. Bearings shall include anchor bolts, plates, and associated hardware. Anchor bolts and smooth bars, as applicable, must meet:
 - a) 1 ½" Diameter,
 - b) AASHTO M 314 Grade 105,
 - c) Two heavy hex nuts per AASHTO M 291,
 - d) Charpy V-Notch requirements per ASTM F1554 S5 (20 J @ -20°F),
 - e) Galvanizing per AASHTO M 232.
- C. Design Requirements. Design girders in accordance with the Montana Standard Specifications and the AASHTO LRFD Bridge Design Specifications. Girders shall conform to the geometry, span configuration, and haunch requirements shown in the Partial Bridge Plans. Design shall reflect the load distribution, diaphragm loads, camber behavior, and interface shear elements shown in the Partial Bridge Plans. Project-specific prestressed beam design parameters and load information are provided on sheet B11. Coordinate prestress camber to fit within haunch dimensions provided in the plans.
- D. Fabrication. Fabricate girders in accordance with AASHTO LRFD Bridge Construction Specifications and MDT Standard Specifications Section 553. All dimensions, inserts, camber requirements, lifting points, and diaphragm interface features shall match the plan set as applicable. Fabricate bearings according to approved bearing design drawings with materials as specified in this Special Provision, Section B. All welders and welding procedures must be preapproved as required.
- E. Submittals. Provide all submittals as directed in the MDT Standard Specifications Section 553.
- F. Delivery. Deliver to the project site (specified in project plans). Delivery must be coordinated with the EPM. Notify the EPM 14 calendar days prior to delivery. If the EPM indicates the project site is not prepped and ready for material delivery, deliver to the MDT Maintenance Yard near Libby, Montana (35838 US Hwy 2, Libby, MT 59923).
 - 1) Deliver bearings, anchor bolts, and hardware on or before July 20, 2026.
 - 2) Deliver prestressed girders on or before August 13, 2026.
 - 3) MDT or the Contractor will unload and store materials as necessary.
- G. Payment. Payment for the completed and accepted plan quantities is for Prestressed Beam – MTS 45, covering the complete design, fabrication, furnishing, and delivery of all beams, bearings, and associated hardware as specified.

3. ALTERNATE PRESTRESSED BEAM SECTIONS (REVISED 6-6-12)

A. Description.

1) General. The contractor may elect to use an alternate prestressed beam shape if the resulting change in superstructure depth is less than or equal to the maximum allowed increase shown in the table below.

| Bridge at station | Maximum Allowed Increase in Superstructure Depth |
|-------------------|--|
| 106+27.614 | 0.05 feet |

2) Submittals.

a) Provide two sets of designs that meet the AASHTO and Montana Specifications shown on the Plans, to the EPM for review and approval. Show calculations for the beams, slab and reinforcing steel. Provide design information as required to either validate or alter the substructure as shown.

b) Provide five sets of shop drawings to the EPM meeting the requirements of Section 553 of the Standard Specifications. Shop drawings may be submitted on 11" x 17" sheets and may be furnished in Adobe Acrobat Reader (.pdf) format in lieu of hard copies. Have a professional engineer licensed in Montana sign, stamp or seal these plans and designs. Do not fabricate beams prior to receiving approved drawings.

c) Provide a revised set of design drawings showing all changes to the bridge. Prepare the drawings using a CAD system. Submit the drawings in Adobe Acrobat Reader (.pdf) format. Include a cover letter signed by the supervising engineer transmitting the finished drawings. In addition, provide the CAD files used to detail the revisions. Upon request, the original design drawings will be made available.

B. Measurement and Payment. The beam and slab shown on the plans will be the configuration measured or calculated for payment. Furnish and install at no cost to the state any additional beam footage, slab concrete or slab reinforcing steel, or substructure concrete or reinforcing steel required because of the use of alternate beam shapes.

END OF SECTION

PRELIMINARY GIRDER PROCUREMENT PLANS ONLY

ASSOCIATED PROJECT AGREEMENT NUMBERS
P.E. STPS 482-1(9)2

BRIDGE IDENTIFICATION
MDT STR ID
06853

MONTANA DEPARTMENT OF TRANSPORTATION

BRIDGE PLANS AND QUANTITIES FEDERAL AID PROJECT STPS 482-1(10)2

S-482 REPAIR - S OF LIBBY LINCOLN COUNTY

BY _____
DATE _____

SHEET NO.
B1

LIST OF DRAWINGS AND
ESTIMATED BRIDGE PLAN
QUANTITIES

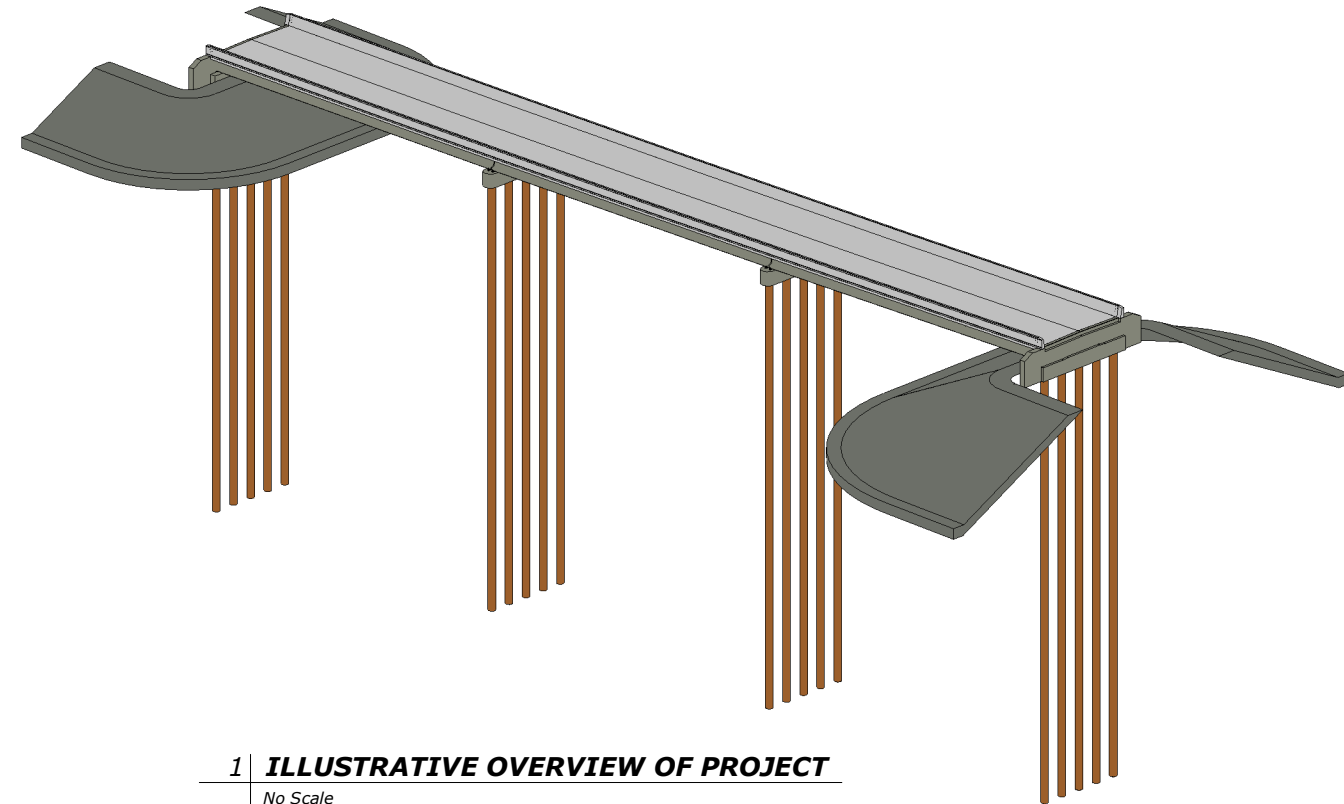
SCALE SHOWN ON BRIDGE PLANS SHEETS
ARE FOR HALF SIZE (11X17) PRINTS
FULL SIZE PRINTS ARE APPROXIMATELY
TWICE ORIGINAL SCALE

LIST OF DRAWINGS

| SHEET NO. | DWG. NO. | TITLE |
|-----------|----------|---|
| B1 | | LIST OF DRAWINGS AND ESTIMATED BRIDGE PLAN QUANTITIES |
| B3 | | GENERAL LAYOUT |
| B4 | | GENERAL LAYOUT DETAILS |
| B5 | | FOOTING PLAN |
| B11 | | ERECTION PLAN |
| B12 | | SLAB DETAILS |

LIST OF STANDARD DRAWINGS

| DWG. NO. | DATE | TITLE |
|----------|--------|---|
| MTS | 3-6-12 | STANDARD PRESTRESSED CONCRETE BEAM TYPE MTS |



1 ILLUSTRATIVE OVERVIEW OF PROJECT
No Scale

ESTIMATED BRIDGE PLAN QUANTITIES

| LOCATION | LENGTH | CONCRETE - CLASS STRUCTURE | CONCRETE - CLASS DECK | TRANSVERSE DECK GROOVING | PRESTRESSED CONCRETE BEAM TYPE MTS-45 | REINFORCING STEEL | REINFORCING STEEL - EPOXY | 36 IN SS CONCRETE BARRIER RAIL-BR | RE-DRIVE TEST PILE | DYNAMIC LOAD TEST | FURN STEEL PILE-PIPE | DRIVE STEEL PILE | PILE CUTTING SHOES |
|----------------|--------|----------------------------|-----------------------|--------------------------|---------------------------------------|-------------------|---------------------------|-----------------------------------|--------------------|-------------------|----------------------|------------------|--------------------|
| | LNFT | CUYD | CUYD | SQYD | LNFT | LB | LB | LNFT | EACH | EACH | LB | LNFT | EACH |
| Bent No. 1 | | 32.7 | | | | 5309.9* | 517.9* | | 1.0 | 1.0 | 25904.6* | 248.6* | 5.0 |
| Pier No. 2 | | 16.9 | | | | 2722.4* | 0 | | 0.0 | 0.0 | 26915.6* | 258.3* | 5.0 |
| Pier No. 3 | | 16.9 | | | | 2722.4* | 0 | | 1.0 | 1.0 | 26915.6* | 258.7* | 5.0 |
| Bent No. 4 | | 32.7 | | | | 5309.9* | 517.9* | | 0.0 | 0.0 | 25915.0* | 248.7* | 5.0 |
| Superstructure | 303 | 13.0 | 300.9 | 876.8 | 1200.0 | 0.0 | 62421.1* | 611.3 | 0.0 | 0.0 | 0 | 0 | 0.0 |
| Total | 303 | 112.2 | 300.9 | 876.8 | 1200.0 | 16064.6* | 63456.9* | 611.3 | 2.0 | 2.0 | 105692.5* | 1014.1* | 20.0 |

* Numbers are placeholder values and will be updated when details are finalized

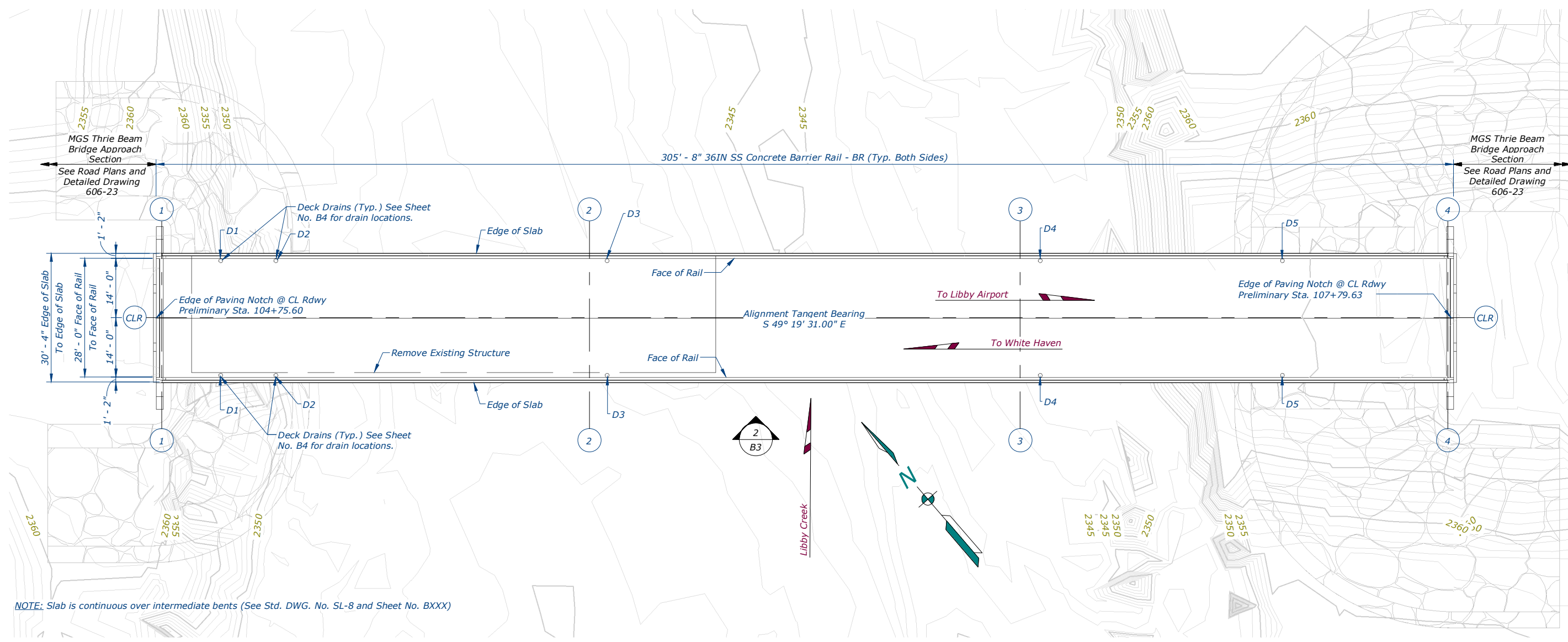
| | | | | | | |
|----------------------------|---------|---------|---------|----------|----------|----------|
| REVISED | REVISED | REVISED | REVISED | CHECKED | DRAWN | DESIGNED |
| | | | | 01-13-26 | 01-13-26 | |
| | | | | S.E.W. | M.L.C. | |
| FILENAME: 10760000BRVT-RVT | | | | | | |



ROUTE
S-482
REF POINT
2+0.597
MDT STR. ID
06853
UPN NUMBER
10760000
DRAWING NO.

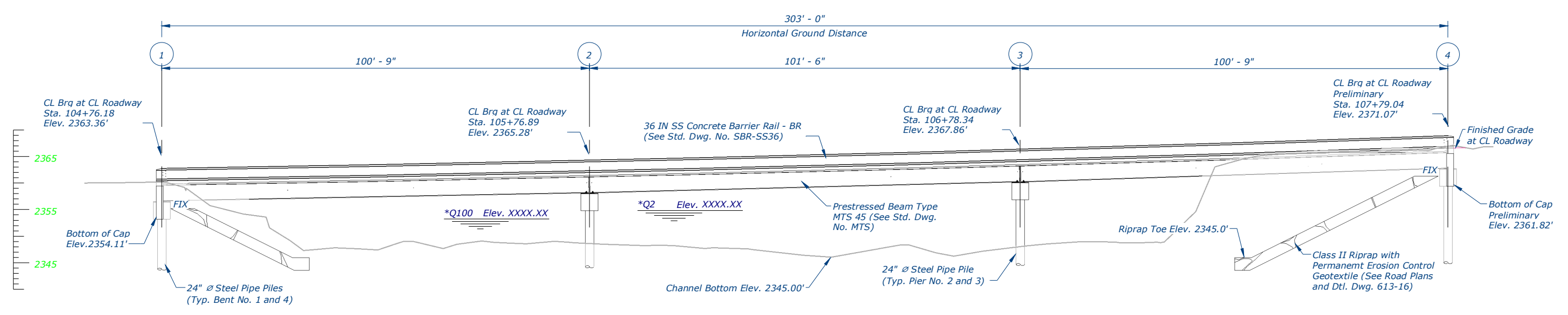
3/18/2026 3:25:59 PM

PRELIMINARY GIRDER PROCUREMENT PLANS ONLY



NOTE: Slab is continuous over intermediate bents (See Std. DWG. No. SL-8 and Sheet No. BXXX)

1 GENERAL PLAN
 Scale ~ 1" = 25'-0"

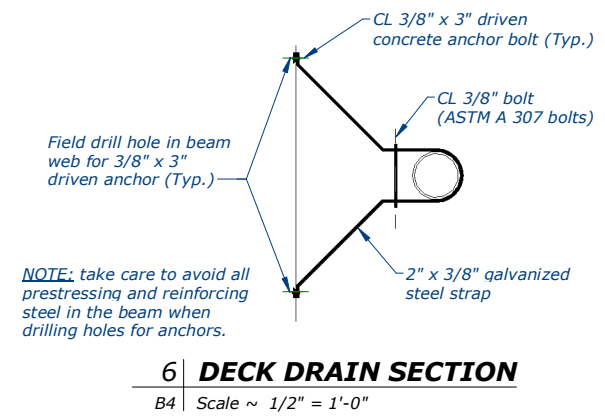
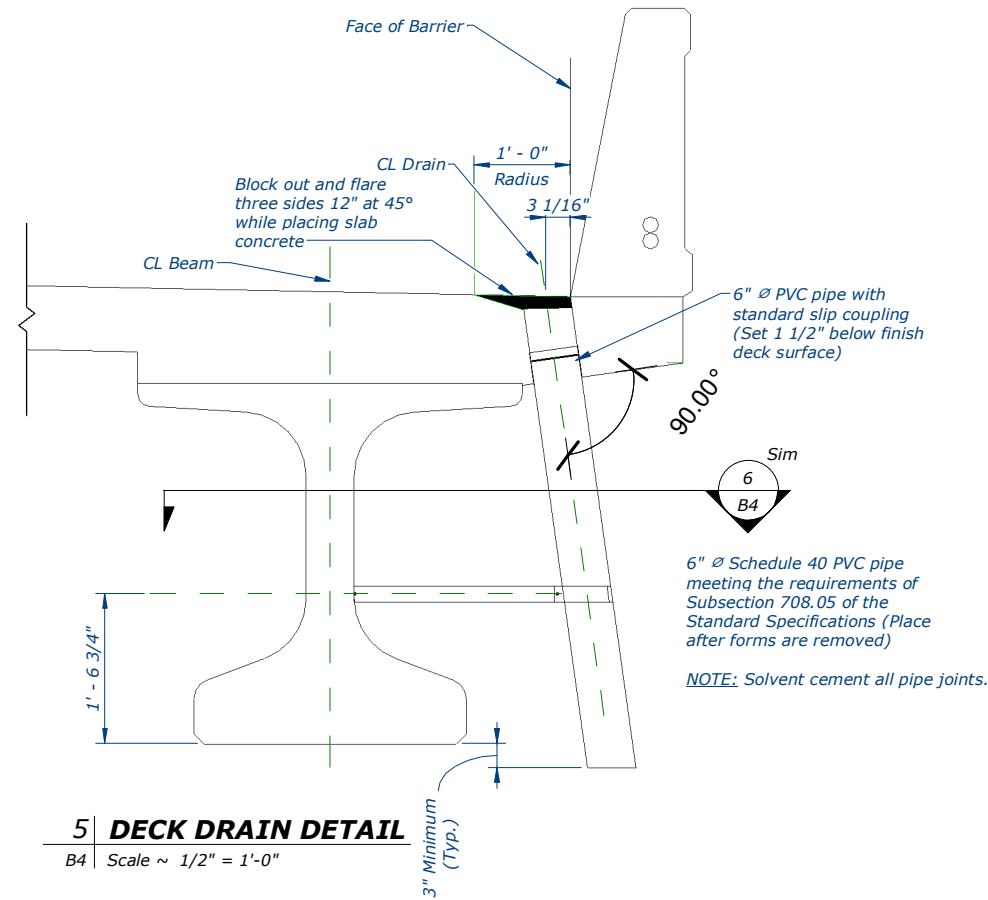
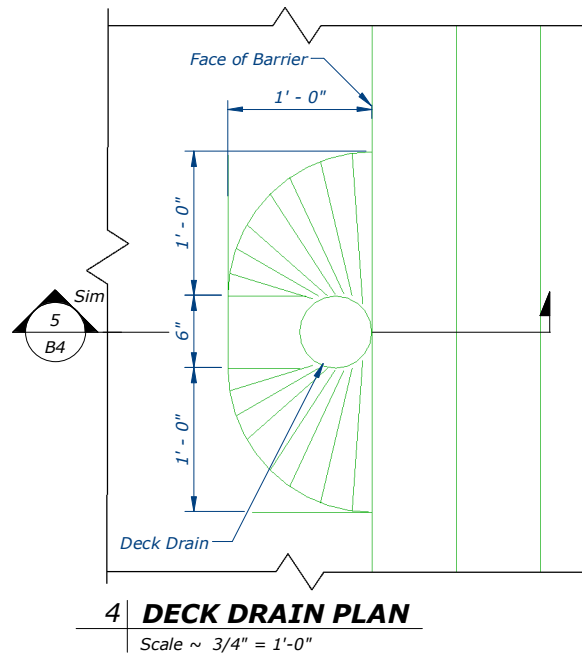
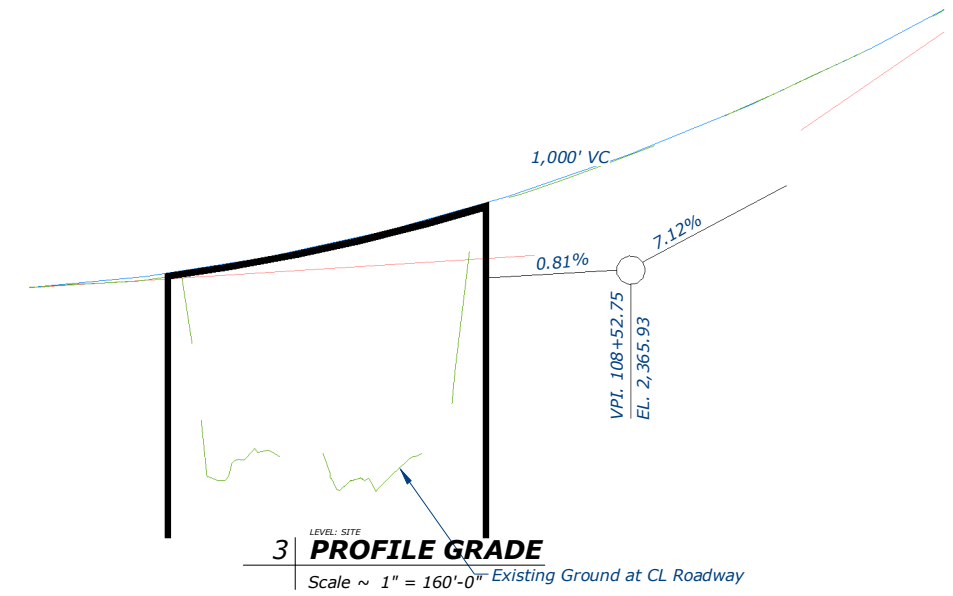
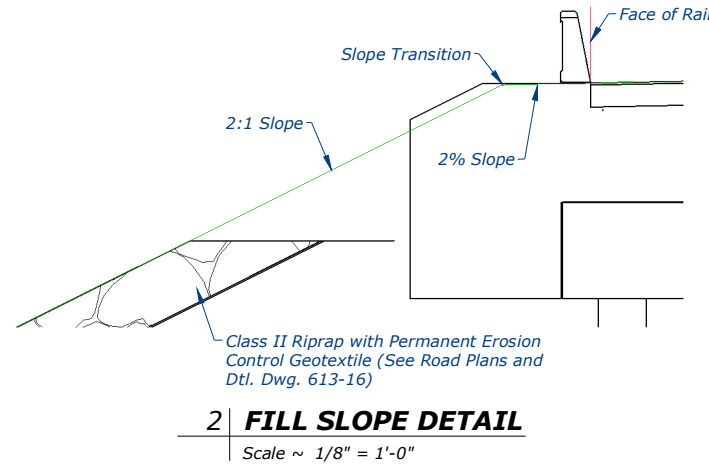
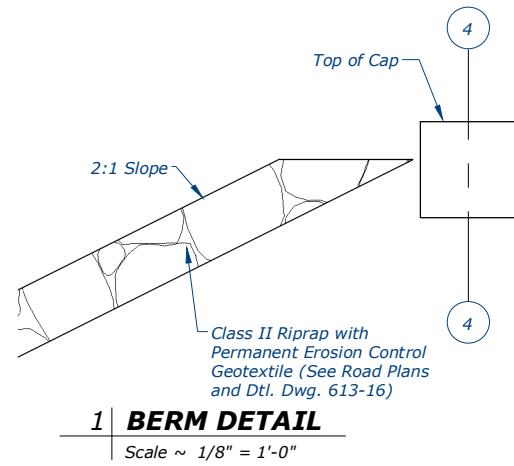


NOTE: See Road Plans for riprap elevations and contour grading

2 GENERAL ELEVATION
 Scale ~ 1" = 25'-0"

| | |
|---|------------------------------|
| SHEET NO. B3 | |
| GENERAL LAYOUT | |
| BRIDGE OVER LIBBY CREEK | AT STA. 106+27.614 |
| FEDERAL AID PROJECT NO. STPS 482-1(10)2 | COUNTY LINCOLN |
| REVISED | 01-13-26 |
| REVISED | 01-13-26 |
| REVISED | 01-13-26 |
| CHECKED | 01-13-26 |
| DESIGNED | 01-13-26 |
| DRAWN | |
| FILENAME: 10760000BRBRV1.RVT | |
| 3/18/2026 3:26:05 PM | |
| ROUTE S-482 | |
| REF POINT 2+0.597 | |
| MDT STR. ID 06853 | |
| UPN NUMBER 10760000 | |
| DRAWING NO. | |

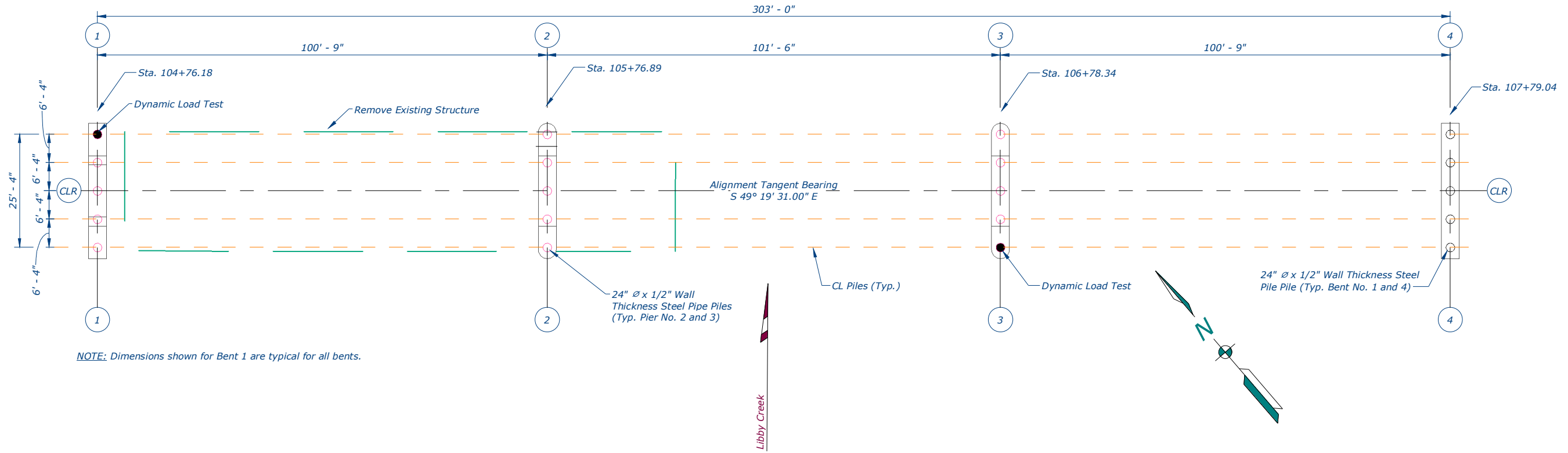
SCALE: 1" = 25'-0"



| DECK DRAIN LOCATIONS | |
|----------------------|--------------------|
| DECK DRAIN | DECK DRAIN STATION |
| D1 | 104+90.00 |
| D2 | 105+03.00 |
| D3 | 105+81.00 |
| D4 | 106+83.00 |
| D5 | 107+40.00 |

| HYDRAULIC DATA | |
|-------------------------------|--------------|
| Drift: | XXX |
| Ice: | XXX |
| Low Scour Elevation (Q100): | XXX' |
| Drainage Area: | XXXX sq. mi. |
| Q2 Elevation: | XXX' |
| Q100 Flow: | XXX cfs |
| Q100 Elevation: | XXX' |
| Q100 Velocity: | XXX fps |
| Actual Low Beam Elevation: | XXX' |
| Allowable Low Beam Elevation: | XXX' |

| | | |
|---------|----------|-----------------------------|
| REVISED | DESIGNED | FILENAME: 10760000BRRTV.RVT |
| REVISED | CHECKED | |
| REVISED | DRAWN | |
| | DATE | |
| | 01-13-26 | |
| | DESIGNED | |
| | 01-13-26 | |
| | DRAWN | |
| | 01-13-26 | |
| | CHECKED | |
| | 01-13-26 | |
| | DESIGNED | |
| | 01-13-26 | |
| | DRAWN | |
| | 01-13-26 | |
| | CHECKED | |
| | 01-13-26 | |
| | DESIGNED | |
| | 01-13-26 | |
| | DRAWN | |
| | 01-13-26 | |
| | CHECKED | |
| | 01-13-26 | |
| | DESIGNED | |
| | 01-13-26 | |
| | DRAWN | |
| | 01-13-26 | |
| | CHECKED | |
| | 01-13-26 | |
| | DESIGNED | |
| | 01-13-26 | |
| | DRAWN | |
| | 01-13-26 | |
| | CHECKED | |
| | 01-13-26 | |
| | DESIGNED | |
| | 01-13-26 | |
| | DRAWN | |
| | 01-13-26 | |
| | CHECKED | |
| | 01-13-26 | |
| | DESIGNED | |
| | 01-13-26 | |
| | DRAWN | |
| | 01-13-26 | |
| | CHECKED | |
| | 01-13-26 | |
| | DESIGNED | |
| | 01-13-26 | |
| | DRAWN | |
| | 01-13-26 | |
| | CHECKED | |
| | 01-13-26 | |
| | DESIGNED | |
| | 01-13-26 | |
| | DRAWN | |
| | 01-13-26 | |
| | CHECKED | |
| | 01-13-26 | |
| | DESIGNED | |
| | 01-13-26 | |
| | DRAWN | |
| | 01-13-26 | |
| | CHECKED | |
| | 01-13-26 | |
| | DESIGNED | |
| | 01-13-26 | |
| | DRAWN | |
| | 01-13-26 | |
| | CHECKED | |
| | 01-13-26 | |
| | DESIGNED | |
| | 01-13-26 | |
| | DRAWN | |
| | 01-13-26 | |
| | CHECKED | |
| | 01-13-26 | |
| | DESIGNED | |
| | 01-13-26 | |
| | DRAWN | |
| | 01-13-26 | |
| | CHECKED | |
| | 01-13-26 | |
| | DESIGNED | |
| | 01-13-26 | |
| | DRAWN | |
| | 01-13-26 | |
| | CHECKED | |
| | 01-13-26 | |
| | DESIGNED | |
| | 01-13-26 | |
| | DRAWN | |
| | 01-13-26 | |
| | CHECKED | |
| | 01-13-26 | |
| | DESIGNED | |
| | 01-13-26 | |
| | DRAWN | |
| | 01-13-26 | |
| | CHECKED | |
| | 01-13-26 | |
| | DESIGNED | |
| | 01-13-26 | |
| | DRAWN | |
| | 01-13-26 | |
| | CHECKED | |
| | 01-13-26 | |
| | DESIGNED | |
| | 01-13-26 | |
| | DRAWN | |
| | 01-13-26 | |
| | CHECKED | |
| | 01-13-26 | |
| | DESIGNED | |
| | 01-13-26 | |
| | DRAWN | |
| | 01-13-26 | |
| | CHECKED | |
| | 01-13-26 | |
| | DESIGNED | |
| | 01-13-26 | |
| | DRAWN | |
| | 01-13-26 | |
| | CHECKED | |
| | 01-13-26 | |
| | DESIGNED | |
| | 01-13-26 | |
| | DRAWN | |
| | 01-13-26 | |
| | CHECKED | |
| | 01-13-26 | |
| | DESIGNED | |
| | 01-13-26 | |
| | DRAWN | |
| | 01-13-26 | |
| | CHECKED | |
| | 01-13-26 | |
| | DESIGNED | |
| | 01-13-26 | |
| | DRAWN | |
| | 01-13-26 | |
| | CHECKED | |
| | 01-13-26 | |
| | DESIGNED | |
| | 01-13-26 | |
| | DRAWN | |
| | 01-13-26 | |
| | CHECKED | |
| | 01-13-26 | |
| | DESIGNED | |
| | 01-13-26 | |
| | DRAWN | |
| | 01-13-26 | |
| | CHECKED | |
| | 01-13-26 | |
| | DESIGNED | |
| | 01-13-26 | |
| | DRAWN | |
| | 01-13-26 | |
| | CHECKED | |
| | 01-13-26 | |
| | DESIGNED | |
| | 01-13-26 | |
| | DRAWN | |
| | 01-13-26 | |
| | CHECKED | |
| | 01-13-26 | |
| | DESIGNED | |
| | 01-13-26 | |
| | DRAWN | |
| | 01-13-26 | |
| | CHECKED | |
| | 01-13-26 | |
| | DESIGNED | |
| | 01-13-26 | |
| | DRAWN | |
| | 01-13-26 | |
| | CHECKED | |
| | 01-13-26 | |
| | DESIGNED | |
| | 01-13-26 | |
| | DRAWN | |
| | 01-13-26 | |
| | CHECKED | |
| | 01-13-26 | |
| | DESIGNED | |
| | 01-13-26 | |
| | DRAWN | |
| | 01-13-26 | |
| | CHECKED | |
| | 01-13-26 | |
| | DESIGNED | |
| | 01-13-26 | |
| | DRAWN | |
| | 01-13-26 | |
| | CHECKED | |
| | 01-13-26 | |
| | DESIGNED | |
| | 01-13-26 | |
| | DRAWN | |
| | 01-13-26 | |
| | CHECKED | |
| | 01-13-26 | |
| | DESIGNED | |
| | 01-13-26 | |
| | DRAWN | |
| | 01-13-26 | |
| | CHECKED | |
| | 01-13-26 | |
| | DESIGNED | |
| | 01-13-26 | |
| | DRAWN | |
| | 01-13-26 | |
| | CHECKED | |
| | 01-13-26 | |
| | DESIGNED | |
| | 01-13-26 | |
| | DRAWN | |
| | 01-13-26 | |
| | CHECKED | |
| | 01-13-26 | |
| | DESIGNED | |
| | 01-13-26 | |
| | DRAWN | |
| | 01-13-26 | |
| | CHECKED | |
| | 01-13-26 | |
| | DESIGNED | |
| | 01-13-26 | |
| | DRAWN | |
| | 01-13-26 | |
| | CHECKED | |
| | 01-13-26 | |
| | DESIGNED | |
| | 01-13-26 | |
| | DRAWN | |
| | 01-13-26 | |
| | CHECKED | |
| | 01-13-26 | |
| | DESIGNED | |
| | 01-13-26 | |
| | DRAWN | |
| | 01-13-26 | |
| | CHECKED | |
| | 01-13-26 | |
| | DESIGNED | |
| | 01-13-26 | |
| | DRAWN | |
| | 01-13-26 | |
| | CHECKED | |
| | 01-13-26 | |
| | DESIGNED | |
| | 01-13-26 | |
| | DRAWN | |
| | 01-13-26 | |
| | CHECKED | |
| | 01-13-26 | |
| | DESIGNED | |
| | 01-13-26 | |
| | DRAWN | |
| | 01-13-26 | |
| | CHECKED | |
| | 01-13-26 | |
| | DESIGNED | |
| | 01-13-26 | |
| | DRAWN | |
| | 01-13-26 | |
| | CHECKED | |
| | 01-13-26 | |
| | DESIGNED | |
| | 01-13-26 | |
| | DRAWN | |
| | 01-13-26 | |
| | CHECKED | |
| | 01-13-26 | |
| | DESIGNED | |
| | 01-13-26 | |
| | DRAWN | |
| | 01-13-26 | |
| | CHECKED | |
| | 01-13-26 | |
| | DESIGNED | |
| | 01-13-26 | |
| | DRAWN | |
| | 01-13-26 | |
| | CHECKED | |
| | 01-13-26 | |
| | DESIGNED | |
| | 01-13-26 | |
| | DRAWN | |
| | 01-13-26 | |
| | CHECKED | |
| | 01-13-26 | |
| | DESIGNED | |
| | 01-13-26 | |
| | DRAWN | |
| | 01-13-26 | |
| | CHECKED | |
| | 01-13-26 | |
| | DESIGNED | |
| | 01-13-26 | |
| | DRAWN | |
| | 01-13-26 | |
| | CHECKED | |
| | 01-13-26 | |
| | DESIGNED | |
| | 01-13-26 | |
| | DRAWN | |
| | 01-13-26 | |
| | CHECKED | |
| | 01-13-26 | |
| | DESIGNED | |
| | 01-13-26 | |
| | DRAWN | |
| | 01-13-26 | |
| | CHECKED | |
| | 01-13-26 | |
| | DESIGNED | |
| | 01-13-26 | |
| | DRAWN | |
| | 01-13-26 | |
| | CHECKED | |
| | 01-13-26 | |
| | DESIGNED | |
| | 01-13-26 | |
| | DRAWN | |
| | 01-13-26 | |
| | CHECKED | |
| | 01-13-26 | |
| | DESIGNED | |
| | 01-13-26 | |
| | DRAWN | |
| | 01-13-26 | |
| | CHECKED | |
| | 01-13-26 | |
| | DESIGNED | |
| | 01-13-26 | |
| | DRAWN | |
| | 01-13-26 | |
| | CHECKED | |
| | 01-13-26 | |
| | DESIGNED | |
| | 01-13-26 | |
| | DRAWN | |
| | 01-13-26 | |
| | CHECKED | |
| | 01-13-26 | |
| | DESIGNED | |
| | 01-13-26 | |
| | DRAWN | |
| | 01-13-26 | |
| | CHECKED | |
| | 01-13-26 | |
| | DESIGNED | |
| | 01-13-26 | |
| | DRAWN | |
| | 01-13-26 | |
| | CHECKED | |
| | 01-13-26 | |
| | DESIGNED | |
| | 01-13-26 | |
| | DRAWN | |
| | 01-13-26 | |
| | CHECKED | |
| | 01-13-26 | |
| | DESIGNED | |
| | 01-13-26 | |
| | DRAWN | |
| | 01-13-26 | |
| | CHECKED | |
| | 01-13-26 | |
| | DESIGNED | |
| | 01-13-26 | |
| | DRAWN | |
| | 01-13-26 | |
| | CHECKED | |
| | 01-13-26 | |
| | DESIGNED | |
| | 01-13-26 | |
| | DRAWN | |
| | 01-13-26 | |
| | CHECKED | |
| | 01-13-26 | |
| | DESIGNED | |



NOTE: Dimensions shown for Bent 1 are typical for all bents.

LEVEL: SITE
1 FOOTING PLAN
 Scale ~ 1" = 25'-0"

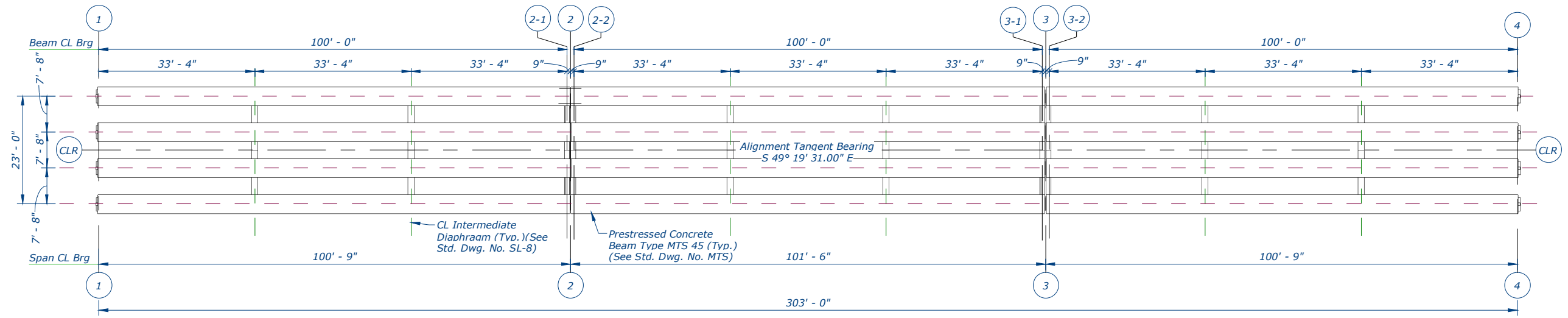
| PILE INFORMATION | | | | | |
|------------------|---------------------------|-------------------------------------|--------------------|--|---------------------------------|
| LOCATION | DESIGN PILE TIP ELEVATION | MAXIMUM PILE CUT-OFF ELEVATION (FT) | PILE TIP TREATMENT | REQUIRED BEARING RESISTANCE DURING DRIVING (KIP) | MAXIMUM PILE REACTION SERVICE I |
| Bent No. 1 | | | | | |
| Pier No. 2 | | | | | |
| Pier No. 3 | | | | | |
| Bent No. 4 | | | | | |

| COORDINATE TABLE | | | |
|------------------|-------------------|-------------------|-------------|
| POINT NAME | N OR Y COORDINATE | E OR X COORDINATE | DESCRIPTION |
| 1 | | | |
| 2 | | | |
| 3 | | | |
| 4 | | | |
| 5 | | | |
| 6 | | | |
| 7 | | | |
| 8 | | | |
| 9 | | | |
| 10 | | | |
| 11 | | | |
| 12 | | | |
| 13 | | | |
| 14 | | | |
| 15 | | | |
| 16 | | | |
| 17 | | | |
| 18 | | | |
| 19 | | | |
| 20 | | | |

NOTE: All pile coordinates are at center of pile.

| | | | | |
|---------|---------|---------|----------|--------------------------|
| REVISED | REVISED | REVISED | DESIGNED | FILENAME: 10760000BR.RVT |
| | | | 01-13-26 | |
| | | | 01-13-26 | |
| | | | DESIGNED | M.L.C. |
| | | | | |





1 ERECTION PLAN
Scale ~ 1" = 25'

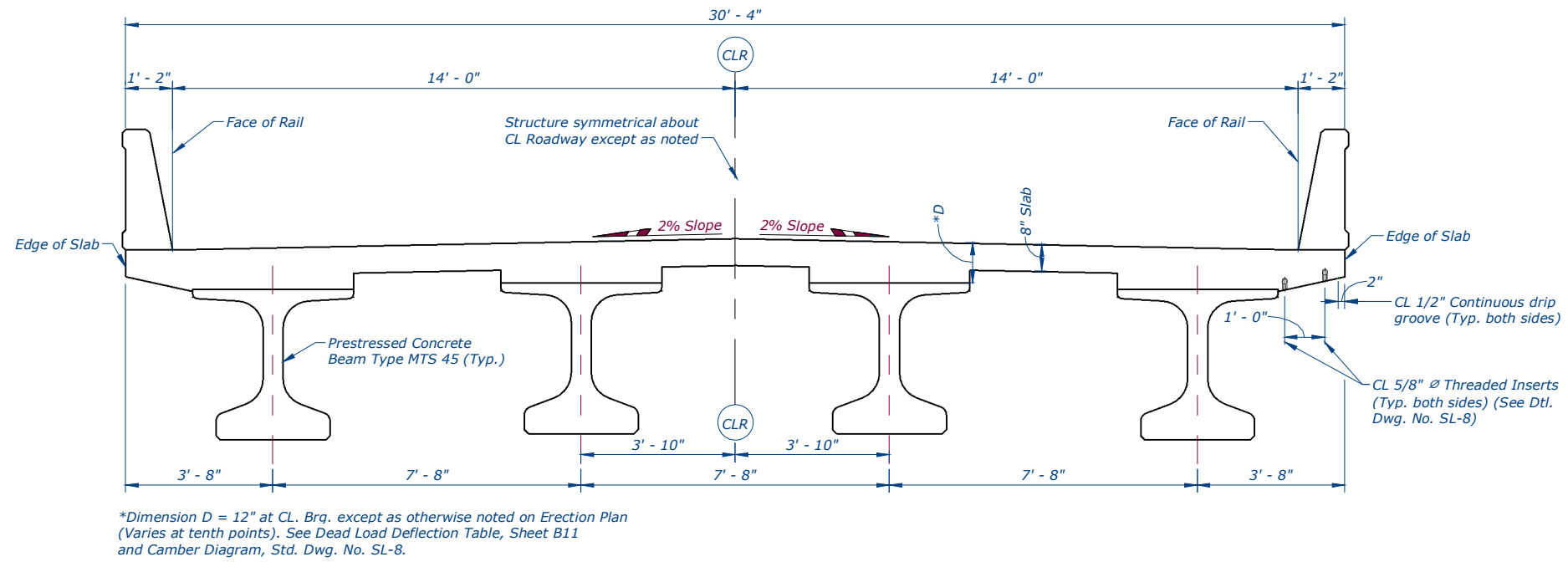
| PRESTRESSED BEAM DESIGN PARAMETERS | |
|------------------------------------|--|
| AASHTO Specification | LRFD 9th Edition with 2023 Interims |
| Structure Type | Simple Span |
| Deck Concrete Strength | 4000 psi |
| Deck Concrete Density | 150 lb/ft ³ |
| Prestressing Strand | 270 ksi Low Relaxation - (0.500" or 0.600" diameter) |
| Shear Reinforcing | AASHTO M 31 Grade 60 |
| Alternate Shear Reinforcing | Welded Wire Reinforcement - AASHTO M55, M221, or MS4 |
| Section Property Calculations | Gross Section |
| Prestress Loss Method | Approximate Losses per LRFD 5.9.3 and 5.9.3.3 |
| Shear Computation Method | Sectional Model per LRFD 5.7.3 |
| Beam / Slab Interface | Intentionally Roughened to 1/4" amplitude |
| Load Rating Requirements | AASHTO LRFR Design Load |

| PRESTRESSED BEAM LOAD TABLE | | |
|-----------------------------|---|----------------------|
| LOAD TYPE | LOADS | APPLICATION METHOD |
| Barrier Load | 0.411 kip/ft per rail | Equally to all beams |
| Future Wearing Surface | 20 lb/ft ² applied between curbs | Equally to all beams |
| Interior Diaphragm | 1.87 kip/diaphragm | At point load |
| Exterior Diaphragm | 0.93 kip/diaphragm | At point load |
| Additional Dead Load | ---- | ---- |
| Live Load | LRFD - HL-93 | per AASHTO LRFD |

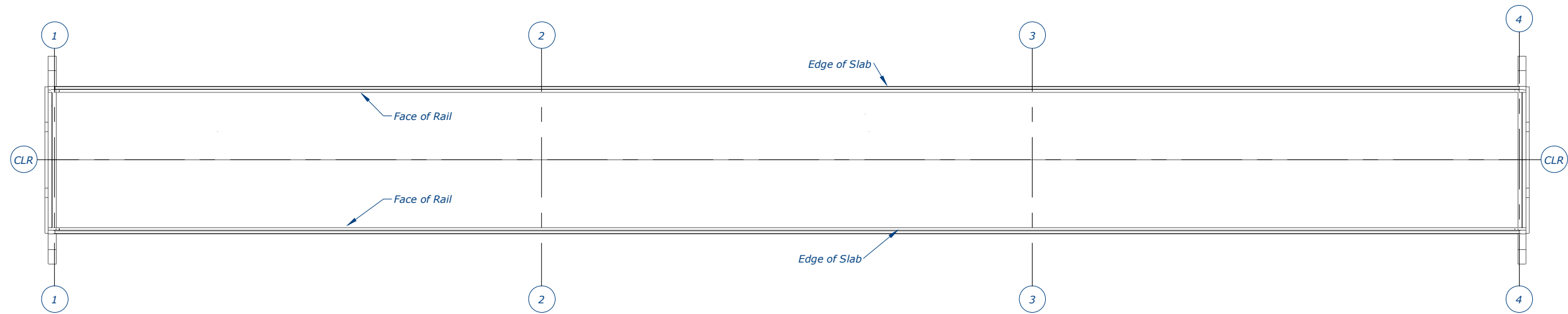
| DEAD LOAD DEFLECTION TABLE | | | | | |
|---------------------------------------|--------|---------|---------|---------|---------|
| TYPE MTS-45 PRESTRESSED CONCRETE BEAM | | | | | |
| SPAN LENGTH 100'-0" | | | | | |
| TENTH POINT | | | | | |
| | 0.1 | 0.2 | 0.3 | 0.4 | 0.5 |
| INT. | 13/16" | 1 1/2" | 2 1/16" | 2 7/16" | 2 1/2" |
| EXT. | 3/4" | 1 7/16" | 2" | 2 5/16" | 2 7/16" |

NOTE: Deflections symmetrical about 0.5 point and do not include beam dead load.

| | | | | | | | | | | | | | | | | | |
|--|------------------------------|--|---------|--|---------|--|---------|--|-------|--|----------|--|---|----------|--------|----------|--------|
| SHEET NO. B11 | | | | | | | | | | | | | | | | | |
| ERECTION PLAN | SCALE: 1" = 25' | | | | | | | | | | | | | | | | |
| BRIDGE OVER LIBBY CREEK | AT STA. 106+27.614 | | | | | | | | | | | | | | | | |
| FEDERAL AID PROJECT NO. STPS 482-1(10)2 | COUNTY LINCOLN | | | | | | | | | | | | | | | | |
| <table border="1" style="font-size: 8px;"> <tr><td>REVISED</td><td> </td></tr> <tr><td>REVISED</td><td> </td></tr> <tr><td>REVISED</td><td> </td></tr> <tr><td>CHECKED</td><td> </td></tr> <tr><td>DRAWN</td><td> </td></tr> <tr><td>DESIGNED</td><td> </td></tr> </table> | REVISED | | REVISED | | REVISED | | CHECKED | | DRAWN | | DESIGNED | | <table border="1" style="font-size: 8px;"> <tr><td>02-23-26</td><td>S.E.W.</td></tr> <tr><td>02-20-26</td><td>M.L.C.</td></tr> </table> | 02-23-26 | S.E.W. | 02-20-26 | M.L.C. |
| REVISED | | | | | | | | | | | | | | | | | |
| REVISED | | | | | | | | | | | | | | | | | |
| REVISED | | | | | | | | | | | | | | | | | |
| CHECKED | | | | | | | | | | | | | | | | | |
| DRAWN | | | | | | | | | | | | | | | | | |
| DESIGNED | | | | | | | | | | | | | | | | | |
| 02-23-26 | S.E.W. | | | | | | | | | | | | | | | | |
| 02-20-26 | M.L.C. | | | | | | | | | | | | | | | | |
| | | | | | | | | | | | | | | | | | |
| ROUTE S-482 | | | | | | | | | | | | | | | | | |
| REF POINT 2+0.597 | | | | | | | | | | | | | | | | | |
| MDT STR. ID 06853 | | | | | | | | | | | | | | | | | |
| UPN NUMBER 10760000 | | | | | | | | | | | | | | | | | |
| DRAWING NO. | | | | | | | | | | | | | | | | | |



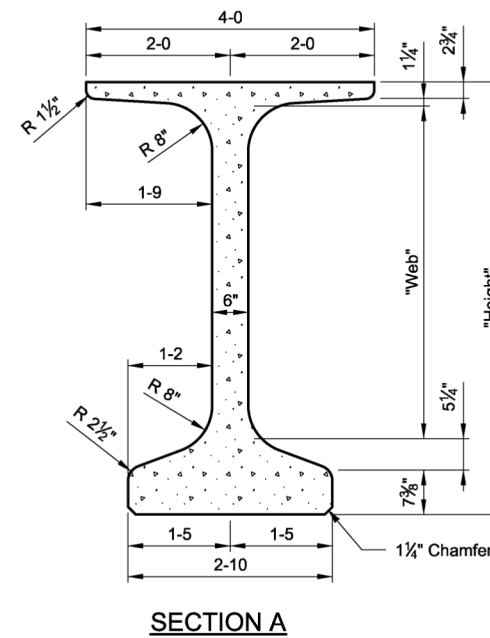
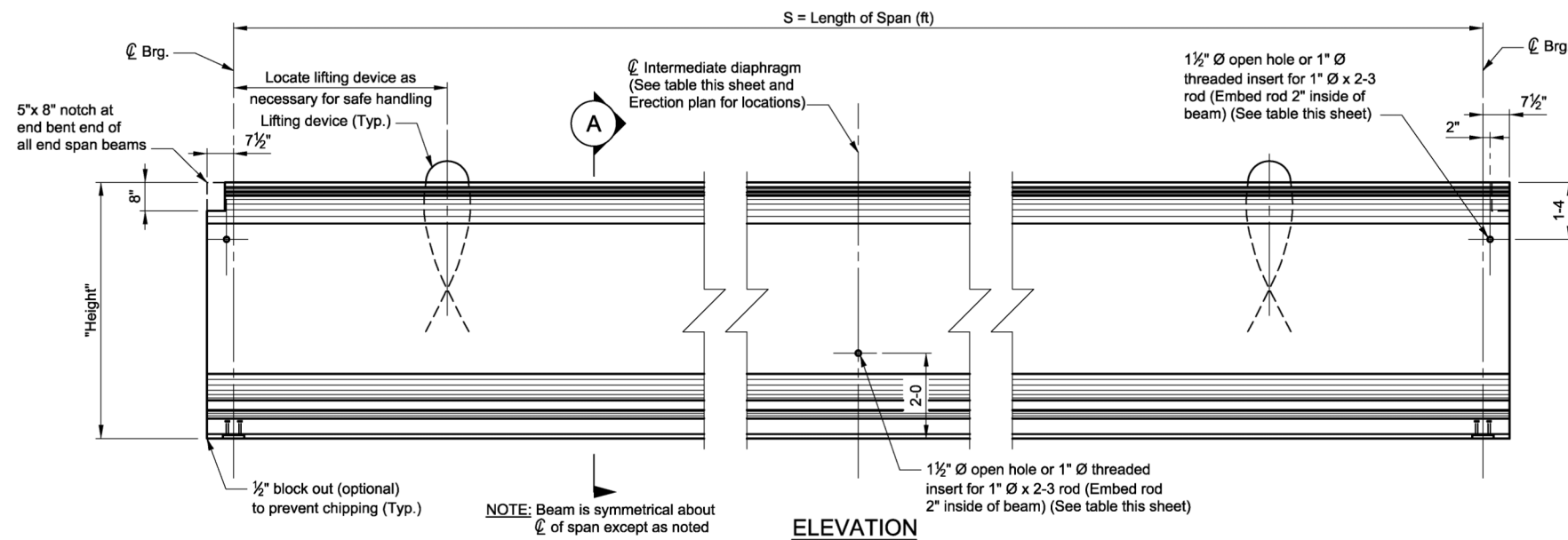
1 | TRANSVERSE SECTION
 B8 | Scale ~ 1/4" = 1'-0"



2 | REINFORCING STEEL PLACEMENT DIAGRAM
 LEVEL: SITE
 Scale ~ 1" = 25'-0"

| | | | | | | | |
|---------|---------|---------|---------|---------|----------|----------|--------|
| REVISED | REVISED | REVISED | REVISED | CHECKED | DESIGNED | DATE | BY |
| | | | | | | 03-02-26 | S.E.W. |
| | | | | | | 02-27-26 | M.L.C. |





NOTES

SPECIFICATIONS: For design specifications, see General Layout. Design and fabricate the beam to support the dead load and live load stresses and provide a minimum ultimate moment capacity shown on the Erection Plan. Show stresses in the beam under each loading condition that is anticipated in the manufacture, handling and service life of the beam.

PRESTRESSING STEEL: Use 0.500" diameter or 0.600" diameter, 7 wire strand prestressing steel.

HARDWARE: Threaded inserts, hold down devices, lifting devices and any other hardware which is to be incorporated in the beam will be approved by the Engineer before fabrication is begun.

DIAPHRAGMS: See Erection Plan for location of diaphragms when structure is skewed.

BEAM LENGTH: Increase the overall length of the beam to allow for elastic shortening, shrinkage and creep.

SHOES: Paint shoes in accordance with Standard Specifications. See details on Bridge Plans if expansion shoes are required. See General layout for type of shoes required.

REINFORCING STEEL: See General Layout. The suffix E denotes epoxy coated reinforcing.

SHEAR REINFORCING: Fabricator will provide shear and end reinforcement to meet the requirements of the AASHTO code specified on the General Layout.

PAYMENT: Include all costs to furnish and install anchor bolts, nuts, smooth bars, metal expansion caps, shoes, fiber-reinforced pads and embedded plates in the unit price bid for Prestressed Beams Type MTS.

STRUCTURAL STEEL: Use structural steel meeting the requirements of AASHTO M 270 Grade 36 for embedded plates, smooth bars and shoes. Use structural steel meeting the requirements of AASHTO M 314 Grade 55 for anchor bolts. Galvanize the anchor bolts meeting the requirements of AASHTO M 232. Use headed shear studs meeting the requirements of AASHTO M 169 Grades 1010 through 1020.

HORIZONTAL INTERFACE SHEAR REINFORCEMENT: Fabricator will provide spacing that meets the requirements of the AASHTO code specified on the General Layout.

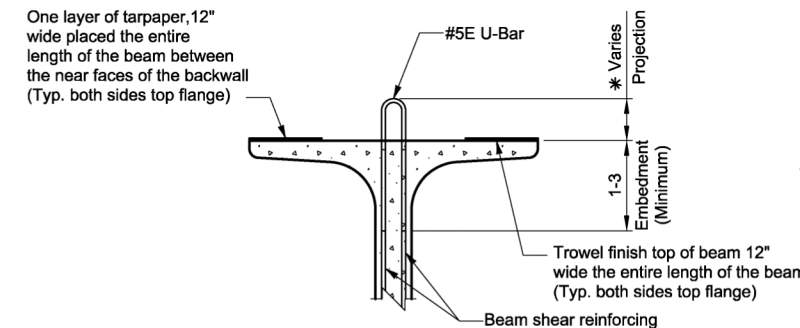
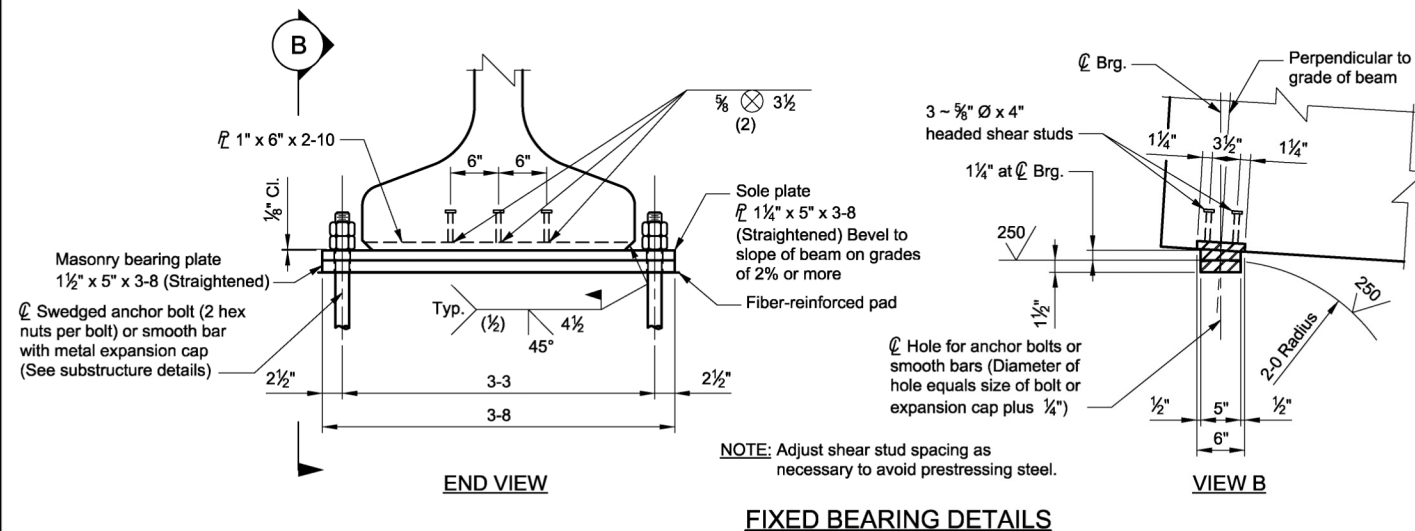
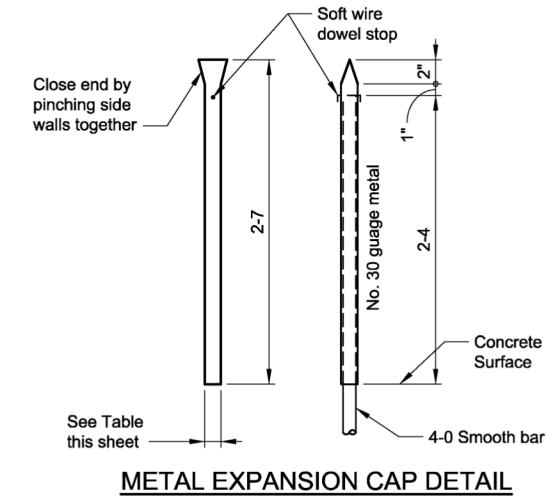
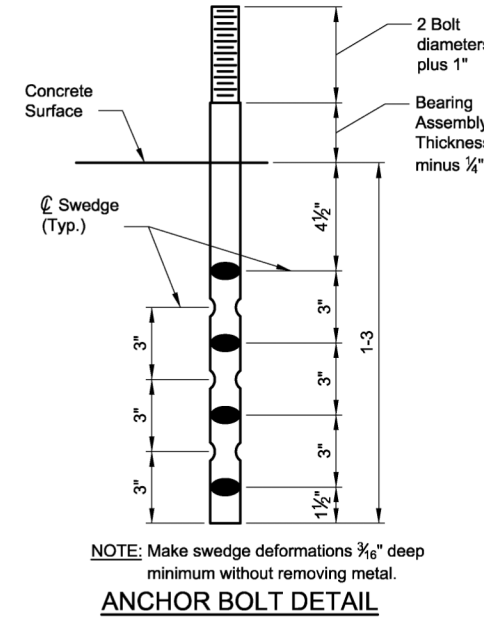
| MONTANA SUPER GIRDER PROPERTIES | | | | | | | | |
|---------------------------------|--------------------------|---------|----------------------|----------|------------------------|--------------------------------|--------------------------------|-------------------|
| NAME | Girder Depth "Height" | "Web" | A (in ²) | Ycg (in) | Ixo (in ⁴) | Sx (Top) (in ³) | Sx (Bot) (in ³) | Weight (lb/ft) |
| MTS-36 | 36" | 19 3/8" | 670 | 16.44 | 112 100 | 5 732 | 6 818 | 700 |
| MTS-45 | 45" | 28 3/8" | 724 | 20.28 | 197 679 | 7 998 | 9 746 | 755 |
| MTS-54 | 54" | 37 3/8" | 778 | 24.22 | 312 050 | 10 477 | 12 886 | 810 |
| MTS-63 | 63" | 46 3/8" | 832 | 28.22 | 457 505 | 13 155 | 16 210 | 865 |
| MTS-72 | 72" | 55 3/8" | 886 | 32.29 | 636 312 | 16 024 | 19 706 | 925 |
| MTS-81 | 81" | 64 3/8" | 940 | 36.41 | 850 718 | 19 077 | 23 368 | 980 |
| MTS-96 | 96" | 79 3/8" | 1030 | 43.36 | 1 293 240 | 24 566 | 29 829 | 1075 |

| DIAPHRAGM LOCATIONS | |
|---------------------|--------------------|
| SPAN LENGTH | DIAPHRAGM LOCATION |
| 0 - 40 ft | NONE |
| 40 - 80 ft | 1/2 S |
| 80 - 120 ft | 1/3 S |
| 120 - 160 ft | 1/4 S |
| greater than 160 ft | See Erection Plan |

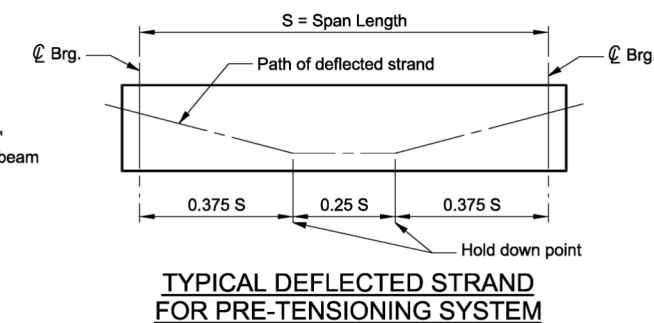
| ANCHOR BOLT DIAMETERS | | |
|-----------------------|------------------------------------|------------------------|
| SPAN LENGTH | ANCHOR BOLT OR SMOOTH BAR DIAMETER | EXPANSION CAP DIAMETER |
| 0 - 50 ft | 1" | 1 1/8" |
| 50 - 100 ft | 1 1/4" | 1 3/8" |
| 100 - 150 ft | 1 1/2" | 1 5/8" |
| greater than 150 ft | 1 3/4" | 1 7/8" |

| WEB THREADED INSERT / HOLE | | |
|----------------------------|-----------------|---------------|
| CONDITION | EXTERIOR BEAM | INTERIOR BEAM |
| End Bent Fixed Bearing | Open Hole | Open Hole |
| End Bent Exp Bearing | Threaded Insert | Open Hole |
| Intermediate Bent | Threaded Insert | Open Hole |
| Intermediate Diaphragm | Threaded Insert | Open Hole |

NOTE: Place threaded inserts at diaphragm face of beam only.



*NOTE: Extend horizontal interface shear reinforcement such that is located between top and bottom deck mat reinforcing layers.



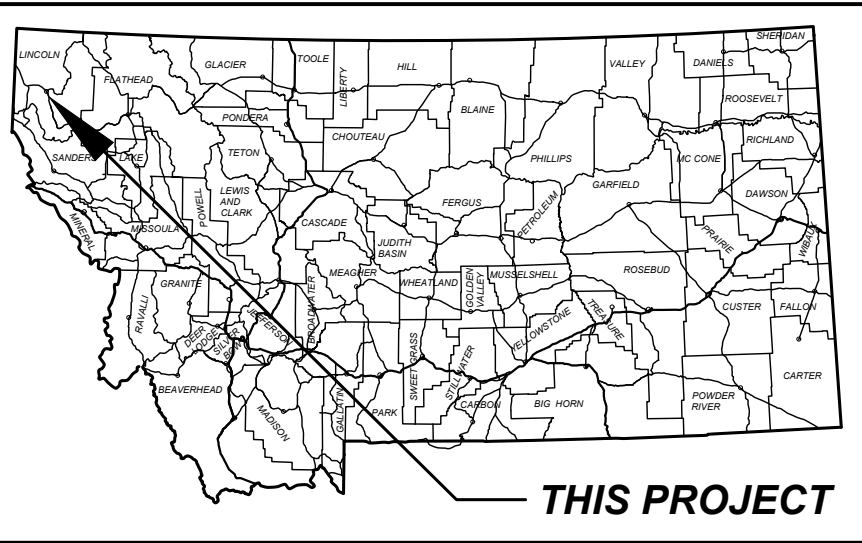
STANDARD PRESTRESSED CONCRETE BEAM TYPE MTS

MDTA MONTANA DEPARTMENT OF TRANSPORTATION BRIDGE BUREAU

| | | | | | | |
|---------|---------|---------|----------|--------|----------|----------|
| REVISED | REVISED | REVISED | APPROVED | DRAWN | \$DATE\$ | \$FILE\$ |
| 5-20-14 | 3-6-12 | 3-6-12 | D.F.J. | T.J.B. | | |

DRAWING NO. MTS

PRELIMINARY GIRDER PROCUREMENT PLANS ONLY



THIS PROJECT

MONTANA DEPARTMENT OF TRANSPORTATION

FEDERAL AID PROJECT STPS 482-1(10)2

BRIDGE REPLACEMENT, GRADE, GRAVEL & ASPHALT

S-482 REPAIR - S OF LIBBY

LINCOLN COUNTY

LENGTH 0.1 MILES

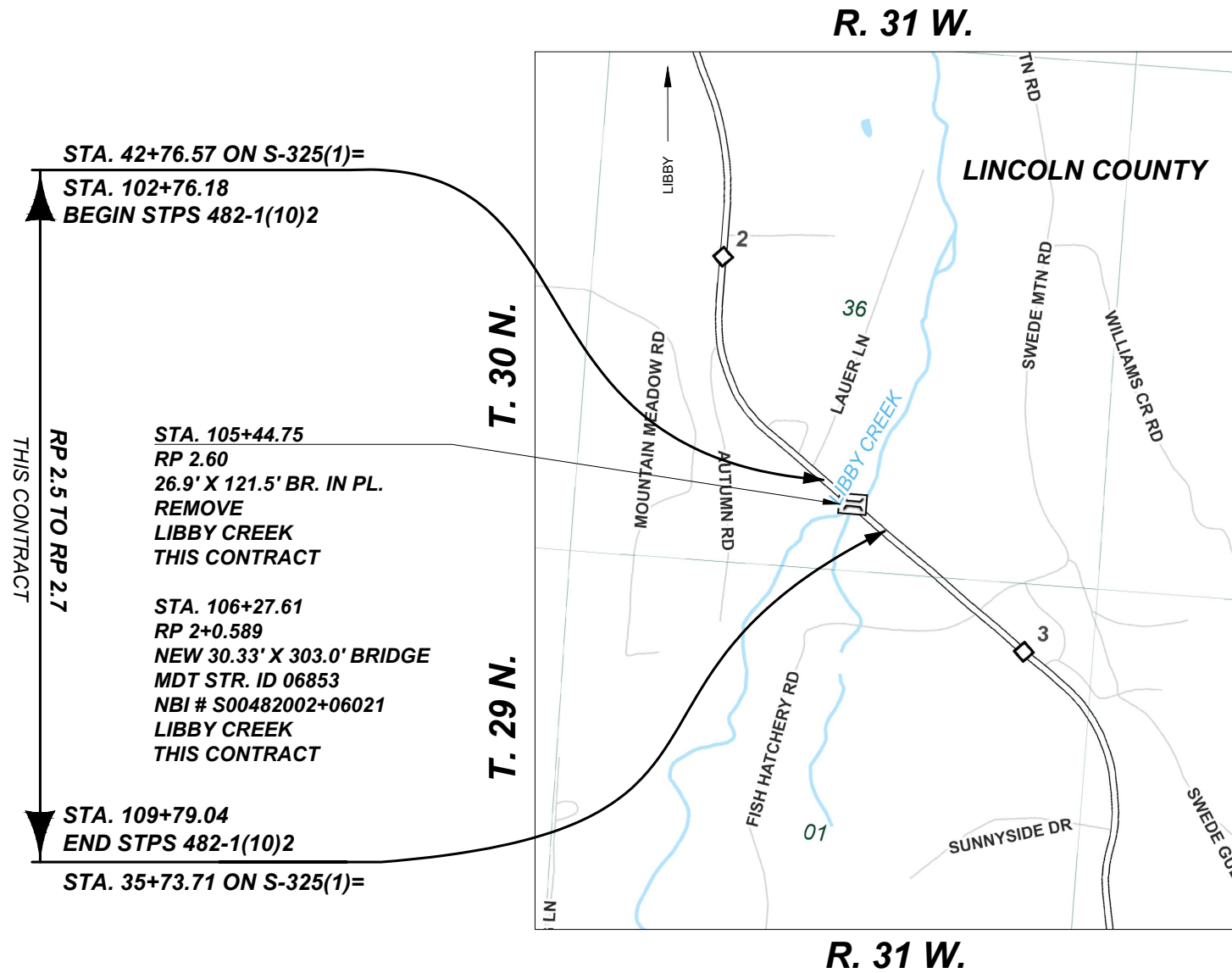
PROJECT DESIGN DATA

| | | |
|---------|------|---------------------------|
| PRESENT | 2025 | A.A.D.T. = 1,040 |
| LETTING | 2026 | A.A.D.T. = 1,050 |
| DESIGN | 2046 | A.A.D.T. = 1,280 |
| | | D.H.V. = 180 |
| | | TRUCKS = 3.0% |
| | | V. = 50 MPH |
| | | 18 KIP ESAL'S = 17 DAILY |
| | | ANNUAL GROWTH RATE = 1.0% |

ASSOCIATED PROJECT AGREEMENT NUMBERS

| | |
|-------|-----------------|
| R/W | |
| I. C. | STPS 482-1(11)2 |
| P. E. | STPS 482-1(9)2 |

SURFACING SOURCES - CONTRACTOR FURNISHED



T. 29 N. T. 30 N.

MONTANA
DEPARTMENT OF TRANSPORTATION

APPROVED BY: _____

HIGHWAYS
ENGINEER

MONTANA
DAVID
HOLIEN
20186PE
PROFESSIONAL ENGINEER

DATE _____

SHEET NO.

1

TITLE SHEET

PROJECT NAME
S-482 REPAIR - S OF LIBBY

COUNTY
LINCOLN

PROJECT ID
STPS 482-1(10)2

UPN
10760000

DESIGNED BY
FIRST INITIAL LAST NAME MM/YYYY

REVIEWED BY
FIRST INITIAL LAST NAME MM/YYYY

CHECKED BY
FIRST INITIAL LAST NAME MM/YYYY

10760000RDRD1001.DWG

MONTANA
Department of Transportation



ROAD PLANS

3/18/2026 10:26 AM