

**STATE OF MONTANA
DEPARTMENT OF TRANSPORTATION
BID PACKAGE**

Sealed bids for construction of this project will be received by the Montana Department of Transportation, Construction Contracting Section, Room 101, 2701 Prospect, Helena, Montana until 9:00 a.m. on June 25, 2026. All bids will then be publicly opened, reviewed for correctness, and then publicly read.

Federal Aid Project(s):

STPS 308-1(37)6

Slide Repair-W OF Bearcreek

Bid proposals, Plans, Standard Specifications, Detail Drawings, and Standard Contract Forms are on file for examination and may be obtained from the Construction Contracting Bureau of the Montana Department of Transportation, 2701 Prospect Avenue, P.O. Box 201001, Helena, Montana 59620-1001.

Prime bidders use the Electronic Bid System or bid on-line through Bid Express to produce a bid containing Proposal Forms, Schedule of Items, and Disadvantaged Business Enterprises (DBE) Requirements (if applicable).

MONTANA DEPARTMENT OF TRANSPORTATION

Loran Frazier, Chairperson
Montana Transportation Commission

Christopher Dorrington
Director of Transportation

Contract No.10626
KH:NB:9970000ADV

SPECIAL PROVISIONS

CONTRACT NO. 10626

MONTANA DEPARTMENT OF TRANSPORTATION
SCHEDULE OF ITEMS

CONTRACT ID: 10626

PROJECT: STPS 308-1(37)6 9970037000 SLIDE REPAIR - W OF BEARCREEK

SECTION: 0001 - SLIDE REPAIR

PROP LINE NO.	ITEM NUMBER	ITEM DESCRIPTION	UNIT OF MEASURE	QUANTITY
0010	103500005	ESCROW OF BID DOCUMENTS	LS	1.00
0020	104030010	MISCELLANEOUS WORK	UNIT	20,000.00
0030	109200005	MOBILIZATION	LS	1.00
0040	203020100	EXCAVATION-UNCLASSIFIED	CUYD	57,533.00
0050	203020175	EXCAVATION-UNCLASS CHANNEL	CUYD	372.00
0060	203080100	TOPSOIL-SALVAGING AND PLACING	CUYD	1,507.00
0070	208010150	TEMPORARY EROSION CONTROL-LS	LS	1.00
0080	208010200	TEMPORARY EROSION CONTROL-FIXED	UNIT	500.00
0090	210020000	GRADER-MOTOR	HOURL	10.00
0100	301020348	DRAIN AGGREGATE	CUYD	80.30
0110	301020465	LOW PERMEABILITY BACKFILL	CUYD	371.60
0120	603000050	GRANULAR BEDDING MATERIAL	CUYD	13.40
0130	603013413	PIPE-CORR POLYETHYLENE DR 8 IN	LNFT	742.60
0140	606010140	GUARDRAIL END SECTION WIDENING	EACH	2.00
0150	606010330	MGS GUARDRAIL	LNFT	775.00
0160	606010335	MASH W-BEAM TERMINAL SECTION	EACH	2.00
0170	606010385	REMOVE GUARDRAIL	LNFT	287.50
0180	606011518	TEMPORARY IMPACT ATTENUATOR	EACH	2.00
0190	607100229	FARM FENCE-TYPE F4W	LNFT	228.00
0200	607100259	FARM FENCE-TYPE F5W	LNFT	605.00
0210	607100360	FARM FENCE-PANEL/SINGLE FW	EACH	2.00
0220	607100380	FARM FENCE-PANEL/DOUBLE FW	EACH	4.00
0230	607100720	DEADMAN	EACH	2.00
0240	610100101	SEEDING AREA NO 1	ACRE	0.30
0250	610100102	SEEDING AREA NO 2	ACRE	2.50
0260	610100326	FERTILIZING AREA NO 1	ACRE	0.30
0270	610100327	FERTILIZING AREA NO 2	ACRE	2.50
0280	610220050	MULCH-COMPOST	ACRE	2.50
0290	618030015	TRAFFIC CONTROL-FIXED	UNIT	500.00
0300	618030080	TRAFFIC CONTROL-LS	LS	1.00

SPECIAL PROVISIONS

CONTRACT NO. 10626

SECTION: 0001 - SLIDE REPAIR

PROP LINE NO.	ITEM NUMBER	ITEM DESCRIPTION	UNIT OF MEASURE	QUANTITY
0310	618190100	TEMPORARY BARRIER RAIL	LNFT	300.00
0320	622011022	SUBSURFACE DRAIN FILTER-HIGH SURV	SQYD	472.00

**TABLE OF CONTENTS
FEDERAL AID PROJECT(S) STPS 308-1(37)6**

1. PROJECT DESCRIPTION [102].....	5
2. CONTRACT TIME - COMPLETION DATE [108] (REVISED 1-21-16).....	5
3. CONTRACT DOCUMENTS [102] (REVISED 1-15-26).....	5
4. DBE-SBE BIDDING REQUIREMENTS [102] (REVISED 9-18-25).....	5
5. LABOR AND CIVIL RIGHTS REQUIREMENTS [102] (REVISED 1-15-26).....	6
6. SOIL BORING INFORMATION [102] (REVISED 1-16-14).....	6
7. BIDDER'S PROPOSED AGGREGATE SOURCE(S) [103] (REVISED 8-07-25).....	7
8. ESCROW OF BID DOCUMENTS [103] (REVISED 4-28-22).....	7
9. PARTNERING [105] (ADDED 1-11-24)	7
10. STEEL PRICE ADJUSTMENT [106] (REVISED 11-13-25)	7
11. DOMESTIC MATERIALS REQUIREMENTS [106] (REVISED 11-13-25).....	7
12. NOTICE TO BIDDERS [108] (ADDED 11-21-08)	9
13. MOISTURE SENSITIVE SOILS [203] (REVISED 9-11-14)	9
14. ENVIRONMENTAL SPECIFICATIONS [208] (ADDED 9-9-21M)	10
15. GREATER SAGE-GROUSE CONSERVATION	10
16. STORM WATER PERMITTING REQUIREMENTS UNDER THE MT POLLUTANT DISCHARGE ELIMINATION SYSTEM (MPDES) [208] (REVISED 8-10-23)	10
17. NEMONT FIBER OPTIC LINE	12
18. BEARCREEK WATER LINE	13
19. CUT SLOPE CONSTRUCTION	13
20. SUBSURFACE DRAINS (REVISED 2-1-2022)	14
21. DITCH LINER	15
22. COAL WASTE.....	16
23. TRAFFIC CONTROL/SEQUENCE OF OPERATIONS.....	16
24. SEEDING.....	16

SECTION II

Nondiscrimination Notice

Permit Maps

Logs of Boring

SECTION III

Standard Provisions & Requirements

SPECIAL PROVISIONS
FEDERAL AID PROJECT NO(S). STPS 308-1(37)6
 (REVISED 6-25-26)

The following special provisions are hereby made part of the contract and supplement and/or supersede any sections of the Standard Specifications of Road and Bridge Construction, adopted by the Montana Department of Transportation and the Montana Transportation Commission and all supplements thereto in conflict therewith.

The following documents are hereby incorporated by reference into this contract:

- “Question and Answer Forum”: [Question and Answer Forum](#)
- “Standard Specifications for Road and Bridge construction”:
[Standard Specifications June 2026](#)
- The most recent version of the Detailed Drawings: [Detailed Drawings](#)
- Materials Manual of Test Procedures: [Materials Manual June 25, 2026](#)

The latest version of the Standard Specifications, Biannual updates, and revision summaries can be found at the following website: [Standard Specifications](#)

The Question-and-Answer Forum opens at 5:00 p.m. on the bid letting advertisement date and closes at 8:00 a.m. on the Monday before the bid letting. If Monday is a state holiday, the forum will close on Friday before the bid letting at 3:00 p.m. Answers provided by the Department to the questions, clarifications, and notifications can be posted up to 5:00 p.m. on the day before the letting.

The U.S. Department of Transportation (DOT) operates a toll-free number at 1-800-424-9071, 24 hours a day - 7 days a week. Anyone with knowledge of possible bid rigging, bidder collusion, or other fraudulent activities should use this number to report such activities. All information will be treated confidentially, and callers may remain anonymous.

The Department attempts to provide reasonable accommodations for any known disability that may interfere with a person participating in any service, program, or activity of the Department. Alternate accessible formats of this document will be provided upon request. If reasonable accommodation is needed to participate in Department bid lettings, call the Civil Rights Bureau at 444-6331 or TTY 406-444-7696 [TTY 1-800-335-7592 (toll free)].

1. PROJECT DESCRIPTION [102]

The Slide Repair – W of Bearcreek project in Carbon County is located on S-308 between RP 5.5 and RP 5.7. The intent of this work is to stabilize the existing slide, address drainage issues as necessary, and install guardrail where necessary.

2. CONTRACT TIME - COMPLETION DATE [108] (REVISED 1-21-16)

This contract is a completion date contract. The work begins on the effective date stated in the Notice to Proceed (NTP) and all work is to be completed no later than November 13, 2026. Unusually severe weather is not considered as a delay cause. The NTP will be issued with an effective date of August 24, 2026.

3. CONTRACT DOCUMENTS [102] (REVISED 1-15-26)

The following documents are now available within the Contractors Reference Material on the Department's Contracting and Bidding webpage
<https://www.mdt.mt.gov/business/contracting/> :

- 1) [Table of Contractor's Submittals](#). (Revised 1-15-26)
- 2) [Traffic Control Rate Schedule](#) (Revised 3-9-23)
- 3) [Erosion Control Rates](#) (Revised 1-09-25)

4. DBE-SBE BIDDING REQUIREMENTS [102] (REVISED 9-18-25)

- A. Rescind Standard Specification 103.10 Subcontractor Report.

B. Rescind Standard Specification 102.07B and replace it with the following:

Ensure bids submitted using the EBS (Electronic Bidding System) format contain a Proposal guarantee, an EBS generated Proposal, Schedule of Items, and DBE requirements when applicable.

Written changes to the Schedule of Items, or a bidder's non-submission of every page from the AASHTOWare Project Bids™ EBS file, (including all Schedule of Items pages, Bidders List page, and all DBE pages), automatically renders the bid non-responsive, and the bid will not be read or considered.

Acknowledge addenda using the amended EBS project file to generate the Proposal, Schedule of Items and DBE requirements. It is the bidder's responsibility to ensure that they acquire and apply addenda files when applicable.

C. Standard Specification 102.07C Determination of Bid Responsiveness, is modified to include the following:
Bidders List. The bidders list file must be attached and include the required information for the prime contractor, subcontractors and suppliers that provided a quote for this project, as outlined in 49 CFR 26.11.

If using a supplier, complete the linked worksheet to help determine if the supplier is a regular dealer or distributor. Select Supplier – Dealer or Supplier – Distributor when adding an SBE or DBE in AASHTOWare Project Bids. [DBE Regular Dealer/Distributor Form](#)

D. Standard Specification 102.08 Rejection of Bid Proposals, is modified to include the following:

- Failure to provide a Bidders List.

5. LABOR AND CIVIL RIGHTS REQUIREMENTS [102] (REVISED 1-15-26)

Executive Orders 13658 and 13706 do not apply to this contract. Pay the minimum wage rates contained elsewhere in the bid package and comply with the required contract provisions contained in the form FHWA 1273 included with this contract. To obtain more information, contact the Department's Construction Engineering Services Bureau at 2701 Prospect, Helena, MT (406)475-2258, (800)335-7592 (TTY) or (406)444-7297 (Fax).

Ensure bulletin board requirements contained in the FHWA Form 1273 are met. Please see the following webpage for required bulletin board materials:

[Bulletin Board Materials & Requirements](#)

6. SOIL BORING INFORMATION [102] (REVISED 1-16-14)

The Department routinely conducts subsurface investigations and laboratory testing to collect soil, rock and groundwater information ("geotechnical information") within the anticipated limits of upcoming projects and maintains a comprehensive set of this information in its geotechnical file. For this contract, geotechnical information has been collected by the Department and logs of boring summarizing this information have been included in the Special Provisions and Plans. "Logs of Borings" in the Special Provisions and Plans are based on an interpretation of the field investigation and laboratory testing data, and do not include all the geotechnical information that may be available. The geotechnical information contained in the "Logs of Borings" has been edited or abridged and may not reveal all the geotechnical information which might be useful or of interest to the bidder.

The comprehensive set of geotechnical information is considered too voluminous to include in the bidding package. The geotechnical information that the Department has is available for review or copying upon request. Rock core samples are regularly retained as well. All bidders are expected to fully review all of the geotechnical information prior to submitting their bid. The prime bidder is responsible for ensuring that a firm submitting a subcontractor quote for the prime's use is aware of all available geotechnical information.

Submission of a bid without fully reviewing the Department's comprehensive set of geotechnical information or accepting a quote from a subcontractor without verifying that the

subcontractor reviewed all available geotechnical information is a business decision by the bidder. Failing to fully review all available geotechnical information waives the contractor from making any claim, whether termed "superior knowledge", "justifiable reliance", "differing site condition", or otherwise, against the Department for any information that may be included in the comprehensive geotechnical information file and not shown, or not fully shown, in the "Logs of Borings" contained in the contract documents.

Soil, rock, and groundwater conditions shown on the logs of boring apply only at the specific boring locations and at the time the borings were made. They are not warranted to be representative of subsurface conditions at other locations or times. Groundwater conditions commonly vary seasonally and from that encountered during drilling. Determination of a material's classification is based in part on judgment and opinion. The Department assumes no responsibility for any variation or misinterpretation of the classification of materials.

Utilize the Question and Answer forum to request additional geotechnical information or to submit questions regarding the geotechnical information. To review all available geotechnical information, submit a request in writing to the Department's Geotechnical Section to schedule a time to review the available geotechnical information. Requests for access should be made a minimum of 10 business days prior to the bid opening.

7. BIDDER'S PROPOSED AGGREGATE SOURCE(S) [103] (REVISED 8-07-25)

No later than 7 calendar days after the date of bid-opening (the date of bid opening to count as the first full day), submit to ECCS form MDT-CON-106-02-3 in accordance with Subsection 103.11.

8. ESCROW OF BID DOCUMENTS [103] (REVISED 4-28-22)

Escrow of bid documents under 103.09 is required for this contract.

9. PARTNERING [105] (ADDED 1-11-24)

In accordance with Subsection 105.05.1, this contract requires Level (II) facilitation.

10. STEEL PRICE ADJUSTMENT [106] (REVISED 11-13-25)

In accordance with Subsection 106.09.1, the base price per pound of steel for this contract is: \$1.15.

11. DOMESTIC MATERIALS REQUIREMENTS [106] (REVISED 11-13-25)

A. Steel and Iron Materials. Furnish iron and steel materials in accordance with subsection 106.09. A manufactured product consisting primarily of steel and iron as defined in 23 CFR 635.410 is accepted under subsection 106.09.

B. Construction Materials. Furnish construction materials manufactured in the United States. Construction materials include articles, materials, or supplies that are or consist primarily of:

- Non-ferrous metals.
- Plastic and polymer-based products (including polyvinylchloride, composite building materials, and polymers used in fiber optic cables).
- Glass (including optic glass).
- Fiber optic cable (including drop cable).
- Optical fiber.
- Lumber.
- Drywall, and
- Engineered wood.

Construction materials exclude cement and cementitious materials, aggregates including stone, sand, or gravel, or aggregate binding agents (e.g., asphalt binder) or additives (e.g., polymer modifiers and admixtures).

Manufacturing processes for the construction material must occur in the United States. Manufacturing processes for each of the bulleted construction materials above are defined in 2 CFR 184.6 and are summarized below.

- a) Non-ferrous metals: Initial smelting or melting through final shaping, coating, and assembly.
- b) Plastics: Initial combination of plastic, polymer based, or composite materials until item is in its final form.
- c) Glass: Initial batching and melting, annealing, cooling, and cutting.
- d) Fiber Optic Cable: Initial ribboning, buffering, and fiber stranding and jacketing.
- e) Optical Fiber: Initial preform fabrication through completion of draw.
- f) Lumber: Initial debarking, treatment, and planing.
- g) Drywall: Initial blending of gypsum, cutting, and drying of sandwiched panels.
- h) Engineered Wood: Initial combination of constituents until item is in its final form.
- C. Manufactured Products. Furnish manufactured products as defined in 2 CFR 184.3 that meet the requirements of 23 CFR 635.410. Beginning with the letting of November 13, 2025, the final fabrication of all manufactured products must occur in the United States. Beginning with the November 12, 2026 bid letting, the product must be manufactured in the United States and the cost of the components of the manufactured product that are mined, produced or manufactured in the United States must be greater than 55% of the total cost of all components of the manufactured product.

With respect to precast concrete products that are classified as manufactured products, ensure the components of precast concrete products that consist wholly or predominantly of iron or steel or a combination of both meet the requirements of subsection 106.09.

D. General. Domestic materials preference applies to articles, materials, and supplies that are consumed in, incorporated into, or affixed to a project. It does not apply to tools, equipment, and supplies brought to the construction site and removed at or before the completion of the project (e.g., temporary aluminum scaffolding). Buy America preference does not apply to equipment and furnishings that are used at or within the finished infrastructure project but are not permanently affixed to the structure (e.g., movable chairs, desks, or computer equipment used at or within the project but are not integral or permanently affixed to a structure).

Refer to the decision tree in Section 3.5 of MT 601 to aid in appropriately categorizing specific materials.

Submit Form MDT-MAT-407 "Manufacturer's Certificate of Compliance" for every material identified as a construction material or manufactured product. Do not incorporate materials covered by Form MDT-MAT-407 into the project until all required documentation is submitted to the Department. Ensure suppliers and manufacturers understand the domestic material and contract requirements to supply the required materials and associated documentation.

The Department will not accept items installed until all supporting documentation has been reviewed and is found to be in accordance with the contract requirements. Insufficient or unavailable documentation or documentation showing products containing construction materials of foreign origin are grounds for removal and replacement at the contractor's expense. The Department has designated contract materials as either "construction materials" or "manufactured products" by their respective 9-digit material codes in section MT 601 of the Montana Materials Manual. The Department recognizes there will be situations where a product or material may not fit the designation indicated in section MT 601. In these cases, submit documentation demonstrating or justifying the supplier or manufacturer's position that their specific item has been misclassified to the Project Manager at least 10 business days in advance of installation. The Department, in conjunction with FHWA, will review the submitted documentation and decide as to how that specific product or material will be classified. These determinations will be final, and the appropriate documentation as defined above is required.

The Department further recognizes there will be situations when a product or material may not be addressed in MT 601. In these cases, submit certification of the material's domestic origin appropriate for the material classification to the Project Manager prior to installation.

The US DOT has found that it is in the public interest to issue a waiver of domestic preferences in certain situations. For construction materials and manufactured products, the domestic preference may be waived if the total value of non-compliant material is under \$1,000,000 or 5% of the total applicable project costs, whichever is less. Submit actual individual material costs, minus manufacturing costs outside the defined manufacturing processes outlined above, along with justification in the form of invoices, bills of lading, or other appropriate documents to the Department if requesting the waiver.

The above waiver does not apply to iron and steel, the existing de minimis standard for iron and steel under subsection 106.09 continues to apply.

A project with a total contract value of \$500,000 or less is exempt from all domestic preference regulations including steel and iron.

12. NOTICE TO BIDDERS [108] (ADDED 11-21-08)

This project is funded in whole or in part by funds received from the Federal Highway Administration (FHWA), and its construction is wholly contingent on the state's continued receipt of those federal funds. If the federal funds are reduced or not received, the Department may choose to terminate the contract for convenience under the provisions of Subsection 108.10. Any bidder on this project, by submitting its bid, understands and accepts the possibility of the contract being terminated in the event federal funds are reduced or not available and by submitting a bid, each bidder waives any claims for costs or damages other than as specifically allowed by Subsection 108.10.2. In particular, bidders understand and accept that no payment will be allowed for any claimed anticipated profit for work not performed.

13. MOISTURE SENSITIVE SOILS [203] (REVISED 9-11-14)

A. Description. Subsurface investigation for this project indicates that subgrade and/or foundation soils located within the project limits are sensitive to changes in moisture content and may cause construction difficulties. Use construction methods and equipment appropriate for moisture-sensitive soils.

B. Construction. Unless otherwise specified in the contract or by the Project Manager, limit the length of subgrade exposed to precipitation events to an amount that can be adequately sealed by the contractor within 30 minutes of the start of a precipitation event.

Many possibilities are available to facilitate construction and to achieve proper compaction of the subgrade or foundation soils in the project limits. The Department does not direct the use of any of them. However, in preparing bids, identify measures to address the identified conditions. Some possibilities to consider are:

1) Sealing the surface of all exposed subgrade/foundation by rolling with a smooth drum roller whenever work at a particular location is interrupted for 6 or more hours and at the end of each work day.

2) Grading and sloping the surface of all exposed subgrade/foundation to facilitate unimpeded surface drainage away from the work area; and/or,

3) Allowing soils to adequately dry (including after precipitation events) before attempting any type of construction work on the subgrade/foundation soils.

C. Method of Measurement and Basis of Payment. Include all costs for the method(s) chosen to effectively address construction on moisture sensitive soils in the bid item for unclassified excavation/borrow. No additional compensation will be allowed or given for claimed increased costs to address that portion of the work addressed by this provision.

14. ENVIRONMENTAL SPECIFICATIONS [208] (ADDED 9-9-21M)

The Contractor is required to review and meet the requirements of the following subsections:

Migratory Bird Treaty Act Compliance – Vegetation Removal	Subsection 208.03.4A(1)
Work in Bear Habitat	Subsection 208.03.4E

15. GREATER SAGE-GROUSE CONSERVATION

A. Description. Greater Sage-Grouse is a species of concern under state management actions: Executive Order (E.O.) No.12-2015 and Montana Greater Sage-Grouse Stewardship Act. These management actions established procedures and stipulations for activities in designated general and core greater sage-grouse habitat and connectivity areas.

This project occurs in designated core habitat for the Greater Sage-Grouse.

B. Requirements.

1) Do not perform any construction activity between the hours of 7:00 pm and 8:00 am between March 15th and July 15th to comply with E.O stipulations. Traffic control is not subject to this timing restriction. Perform traffic control in accordance with the requirements found elsewhere in the contract.

2) Weed management is required within designated habitat for greater sage-grouse. Reclamation of disturbed areas must include control of noxious weeds and invasive plant species, including cheatgrass (*Bromus tectorum*) and Japanese brome (*Bromus japonicus*).

3) Coordinate with the MSGHCP (<https://sagegrouse.mt.gov/>) on all contractor responsible activities located outside MDT Right-of-Way in designated sage-grouse habitats which require the contractor to obtain a state permit or authorization prior to conducting work. MDT has completed consultation with the MSGHCP only for proposed work located within MDT Right-of-Way. A copy of the consultation letter from the MSGHCP is available upon request from Environmental Services.

4) Seed any disturbed areas with desirable plant species as soon as practicable after construction to reduce the spread and establishment of noxious weeds and to re-establish permanent vegetation.

C. Measurement and Basis for Payment. Work described in this provision is not measured for payment. Consider all costs, including any mitigation required by the MSGHCP, associated with this provision incidental to performance of the work. Include the cost in the cost of other items.

16. STORM WATER PERMITTING REQUIREMENTS UNDER THE MT POLLUTANT DISCHARGE ELIMINATION SYSTEM (MPDES) [208] (REVISED 8-10-23)

A. Description. The DEQ regulates storm water discharges under the MPDES program. If the bid package contains blank erosion control plans, a construction storm water discharge permit authorization will be required. If not, a storm water discharge permit authorization may be required for this project depending on Contractor's operations. Sum the disturbance area (as defined by DEQ) identified in the contract with the area of disturbance caused by contractor operations to determine if the permit acreage threshold is exceeded. Contractor operations can include, but are not limited to, the following support activities: staging areas, access roads, material storage areas, temporary concrete, or asphalt batch plants, borrow areas, areas used for fill placement, etc. If the summed disturbance area is one acre or more, use the DEQ authorization to discharge under the MPDES General Permit for Storm Water Discharges Associated with Construction Activity (General Permit) for this project. In order to facilitate permit transfer, separate NOI packages are required for areas within the right-of-way and areas outside of the right-of-way. A NOI package includes a Notice of Intent, with a

topographic map, a SWPPP, the erosion control plans, sage grouse consultation letter, if applicable, and supporting documentation.

Blank Erosion Control Plans, and a topographic map, are provided with the plans if the plans include greater than 1 acre of disturbance. Complete the erosion control plans as required by the general permit. Complete the SWPPP using DEQ's most current SWPPP Form.

B. Materials. Follow the requirements described in the Department's *Erosion and Sediment Control Best Management Practices Manual (December 2016)*. Rescind Section 208 detailed drawings. Submit to the Project Manager for review and acceptance BMPs proposed for use that are not included in the Manual.

C. Construction Requirements.

1) MPDES Permit Required.

a) Submit one NOI package and the associated fees to DEQ for ground disturbance areas shown in the plans or within the right-of-way. For ground disturbance areas shown in the plans and any other areas within the right-of-way where Contractor activities causing ground disturbance are planned, the Contractor is the sole permittee until construction is complete and the General Permit is transferred to the Department or another entity.

The Department is not responsible for delays caused by incomplete or inaccurate submittals by the Contractor.

Comply with the requirements of the General Permit and implement the SWPPP. Provide an electronic copy of the NOI Package submitted to DEQ and confirmation for receipt of a complete NOI Package from DEQ to the Project Manager prior to conducting any ground disturbance activities.

Do not begin construction activities until the required copy of the NOI Package submitted to DEQ and confirmation for receipt of a complete NOI Package from DEQ is received by the Project Manager.

b) Furnish and install public signage as required by the General Permit. Include the cost of the required sign(s) in the Temporary Erosion Control Lump Sum bid item. Submit a separate NOI package and the associated fees to DEQ for ground disturbance and support activity areas outside the right-of-way and not shown in the plans. Contractor furnished material sources, staging areas, plant sites, or any other Contractor caused ground disturbance outside the right-of-way and not shown in the plans, are the Contractor's responsibility and must be submitted under a separate NOI package from the ground disturbance within the right-of-way. For all support activities outside the right-of-way which are not part of a larger commercial operation serving multiple unrelated construction activities and will not continue operation beyond the completion of the contracted road construction activity, a notice of intent package must be submitted to DEQ to obtain an authorization under the General Permit. Sand and gravel borrow area operations, gravel pits, and/or concrete batch plants that will continue operation beyond the completion of the contracted road project, are part of a larger commercial operation, or serving multiple unrelated construction activities, must obtain permit coverage under the Multi-Sector General Permit for Storm Water Discharges Associated with Industrial Activity (MSGP) regardless of acreage size of the activity if the activity does not already have MSGP authorization. The Contractor is the sole permittee until stabilization is complete and the General Permit is terminated or transferred to another entity. The Department is not responsible for delays caused by incomplete or inaccurate submittals to DEQ by the Contractor.

Provide copies of all NOI Packages submitted to DEQ and confirmations for receipt of complete NOI Packages from DEQ to the Project Manager prior to conducting any ground disturbance activities.

Be responsible for all temporary erosion, sediment, and pollution prevention controls for Contractor furnished material sources, staging areas, plant sites, or any other Contractor caused ground disturbance outside the right-of-way and not shown in the plans.

c) Complete and document all inspections in accordance with the requirements of the General Permit. Use DEQ's most current self-inspection form available online at:

<https://deq.mt.gov/files/Water/WQInfo/Documents/WPBFForms/2023-Attachment-B-MTR100000.pdf>. Provide a copy of all inspection reports to the Project Manager within 7 calendar days of the inspection.

Report potential noncompliance in accordance with applicable regulations, guidance, and permit conditions. Submit to the Project Manager within 7 calendar days of sending or receiving all correspondence to or from regulatory agencies regarding potential noncompliance or violations.

The temporary erosion and sediment control measures and devices to prevent pollution and control sediment transport and soil erosion will be inspected as part of the final inspection to ensure they are maintained and functioning properly. Do not transfer or terminate the General Permit coverage until the BMPs are inspected and accepted and all records required under the permit, including inspection and monitoring reports, are furnished to the Project Manager and authorization is received from the Department. The Department may require that certain BMPs be replaced by another type of BMP as a condition of permit transfer.

Upon approval of site conditions, measures, devices and all pertinent records, the Department will notify the Contractor to begin the Permit Transfer Notification in DEQ FACTS. Once completed, provide verification that all fees have been paid and the permit is ready for transfer in DEQ FACTS. The Department is not liable for the completeness or accuracy of Contractor records completed prior to the permit transfer. Ensure permit conditions and responsibilities are met until confirmation of the transfer is received from DEQ. Defend and hold the Department harmless from any violations, claims, enforcement actions, penalties or fines issued for Contractor activities or recordkeeping that occurred prior to the transfer of the General Permit.

If the Department concurs that final stabilization has been met during the final walk-through, the Contractor may submit a Notice of Termination form to DEQ. Pay the annual fee invoice due at the time of termination. Submit the annual fee invoice to the Project Manager for reimbursement.

2) MPDES Permit not Required.

The BMP-Administration item is included in contracts that may not meet either criteria for an MPDES permit but include ground disturbing activities. Complete BMP inspections and install BMPs, if necessary, in accordance with Section 208, if no storm water permit is required. Utilize form MDT-ENV-014, Water Pollution Control Inspection Report. A certified SWPPP Administrator is not required to conduct the inspections if no permit is required.

D. Method of Measurement. DEQ MPDES fees and monitoring costs associated with obtaining and maintaining the General Permit for ground disturbance areas both within and outside the right-of-way are not measured separately for payment.

If no permit is necessary, include the cost of all erosion control, devices, and inspections in the BMP-Administration bid item.

E. Basis of Payment. No additional payment will be made for the DEQ MPDES fees and monitoring costs associated with the General Permit. Include these costs in the Temporary Erosion Control-Lump Sum bid item.

For project including the BMP-Administration item, include the cost of all erosion control, devices, and inspections in the BMP-Administration bid item. Partial payment for the BMP-Administration will be monthly based on the lump sum contract price in accordance with Table 208-2 in Subsection 208.05.1.

Payment for BMPs required by an event or extra work, and approved by the Project Manager, will be measured and paid for in accordance with the Erosion Control Rate Schedule contained in the contract at a unit price of \$1.00 per unit.

17. NEMONT FIBER OPTIC LINE

A. Description. Nemont has a 72 pair fiber optic line that parallels Secondary Highway 308.

B. Construction Requirements.

- 1) This line is not anticipated to be in conflict with the project. Protect the line in place during construction activities.
- 2) Verify the precise location of all existing underground utilities within the proposed construction limits prior to the commencement of construction related activities in accordance with Montana One-Call regulations. Mark the location of utilities within this zone in a manner that ensures unobstructed visibility to all construction and site personnel to the satisfaction of Nemont and the project manager. Maintain the markings until project completion or as directed by the Project Manager. Follow all one call regulations when digging within 18" of a marked utility.
- 3) A representative from Nemont must be on site when working within 18" of their marked line. Contact Sean McDuffee at (406) 620-7100 one week in advance of the work to coordinate an onsite technician.
- C. Method of Measurement and Basis of Payment. Work described in this provision is not measured separately for payment. Consider all costs associated with this provision incidental to performance of the work. Any damage to the fiber optic line, as a result of the project construction, will be repaired at the contractor's expense and at no cost to Nemont or MDT.

18. BEARCREEK WATER LINE

- A. Description. The community of Bearcreek has an existing underground waterline within the south ditch along S-308. The slide material to be removed is resting over the top of the existing waterline.
- B. Construction Requirements.
 - 1) This waterline is not in conflict with the project. Protect the waterline in place and work around it during the excavation of the slide material and the installation of the ditch and associated subsurface drain.
 - 2) Verify the horizontal and vertical location of the existing waterline prior to the commencement of construction of the ditch and subsurface drain.
 - 3) Notify the community of Bearcreek prior to commencing work above the waterline. Bearcreek must be notified immediately of any damage to the waterline. Contact Dean Webb at (406) 425-0721 at least 5 working days prior to beginning work above the waterline.
- C. Method of Measurement and Basis of Payment. Work described in this provision is not measured separately for payment. Consider all costs associated with this provision incidental to performance of the work.

19. CUT SLOPE CONSTRUCTION

- A. Description. This work consists of cut slope construction using staged excavation to the lines and grades shown in the Plans or as established by the Project Manager. Work will occur adjacent to and within the limits of an active landslide. Cut slope excavation requirements have been established to minimize slope stability impacts from construction activities on the landslide.
- B. Submittals.
 - 1) Work Plan. Submit an access and excavation work plan to the Project Manager for approval a minimum of 30 working days prior to beginning construction of the cut slope.
- C. Construction Requirements.
 - 1) Preparation. Prior to beginning excavation for the cut slope, complete the following tasks:
 - a) Obtain approval of the access and excavation work plan.
 - b) Prepare the designated truck loadout area to facilitate efficient transfer and removal of excavated material during the construction of the cut slope.
 - c) Maintain drainage in the highway ditch adjacent to the truck loadout area.

- d) Prepare equipment routes to access the cut slope.
- 2) Cut Slope Excavation.
 - a) Excavate the cut slope in summer during relatively dry conditions. Do not begin excavation prior to July 6 unless approved by the Project Manager. The Project Manager will suspend grading operations during periods of inclement weather if it is determined that the conditions are unsuitable for continued operations.
 - b) Excavate cut slopes using sequential stages as detailed in the Plans or as established by the Project Manager. After completion of each stage, obtain written approval from the Project Manager to begin the following subsequent stage.
 - (1) Excavated material may be temporarily stockpiled on the existing slope, outside the limits of the slide mass, during active earthwork operations. Do not exceed 100 cubic yards of temporary stockpile material during each shift. Remove all temporary stockpiles from the slope prior to the end of each shift.
 - (2) Equipment may traverse the existing slide mass if part of active earthwork operations. Do not exceed 90 tons of cumulative equipment within the existing slide mass. Remove equipment from the existing slide prior to the end of each shift.
 - (3) Use the material staging and access area designated in the Plans to access the excavation and remove excavated material from the slope.
 - (4) Use the truck loadout area designated in the Plans to load haul trucks.
 - c) Between 160± and 380± feet RT of centerline, moderately hard to hard rock bench material may be encountered. If moderately hard to hard rock bench material is encountered during excavation, the cut slope may be flattened or over-steepened, as shown in the details, with the approval of the Project Manager.
 - d) An MDT Geotechnical Section representative will be on-site to monitor cut slope construction. Notify the Project Manager a minimum of 10 working days prior to beginning cut slope construction to schedule the representative.
- D. Method of Measurement. Unclassified Excavation is measured in accordance with Subsection 203.04.
- E. Basis of Payment. Payment is full compensation for all labor, tools, equipment and other incidentals necessary to complete the work in accordance with the specifications and as directed by the Project Manager. Include all costs associated with truck loadout area preparation, drainage maintenance, and access route preparation in the contract price for Unclassified Excavation.
 - 1) Unclassified Excavation is paid in accordance with Subsection 203.05.

20. SUBSURFACE DRAINS (REVISED 2-1-2022)

- A. Description. This work consists of installing subsurface drains, with geotextile, drainage pipe, and backfill material as shown in the plans or as directed by the Project Manager.
- B. Materials.
 - 1) Provide Granular Bedding Material meeting the requirements of Subsection 701.04.
 - 2) Provide Drain Aggregate meeting the requirements of Subsection 701.10.
 - 3) Provide Subsurface Drainage Geotextile Filter, High Survivability, Class B, meeting the requirements of Section 716.
 - 4) Provide 8 inch Corrugated Polyethylene Drainage Pipe meeting the requirements of Subsection 708.07, Type SP with Class 2 perforations.
 - 5) Provide 8 inch Corrugated Polyethylene Drainage Pipe meeting the requirements of Subsection 708.07, Type S for drain outlets/connections.
 - 6) Provide splices, fittings, and connectors that will not impede flow or damage the drainage pipe and have sufficient strength to withstand construction handling and permanent loading.

7) Provide rodent guards for each drain outlet consisting of steel screen with ½ inch by ½ inch openings and a stainless steel clamp or pre-manufactured guards meeting the opening requirements.

C. Construction Requirements:

1) Unless otherwise specified by the Project Manager, excavate the trench area as shown in the Details in the Plans. Limit trench excavation to 50 ft. long segments prior to geotextile, drain, granular bedding, and drain aggregate placement to avoid destabilizing the existing ground.

2) Place Drainage Geotextile over the bottom and sides of the excavated trench in conformance with Subsection 622.03.3.

3) Place Drainage Pipe on top of the geotextile at the bottom of the excavated trench.

4) Place Granular Bedding Material and Drain Aggregate immediately following Drainage Pipe placement as shown in the Details in the Plans and otherwise in accordance with Section 622.

5) Do not operate construction equipment directly on the geotextile until there is a minimum cover of 16 inches.

6) Do not use vibratory, studded or sheepfoot compaction equipment on the first lift. Compact the first lift in accordance with Subsection 622.03.3.

7) Place all remaining lifts in accordance with Section 203.

8) Repair any Geotextile damaged during construction at Contractor's expense.

9) Construct drain outlets, including slope and daylighting requirements, as shown in the plans.

D. Method of Measurement.

1) Accepted quantities of Granular Bedding Material are measured by the cubic yard as calculated from the plan dimensions.

2) Accepted quantities of Drain Aggregate are measured by the cubic yard as calculated from the plan dimensions.

3) Subsurface Drainage Geotextile Filter is measured in accordance with Subsection 622.04.

4) Accepted quantities of perforated and non-perforated Corrugated Polyethylene Drainage Pipe are measured by the linear feet. Connectors, splices, fittings, rodent guards, trench excavation, and all labor necessary for placement of drainage pipe are not measured for separate payment.

E. Basis of Payment. Payment is full compensation for all labor, tools, equipment, and other incidentals necessary to complete the work in accordance with the specifications and as directed by the Project Manager.

1) Accepted quantities of Granular Bedding Material are paid at the contract unit bid price per cubic yard.

2) Accepted quantities of Drain Aggregate are paid at the contract unit bid price per cubic yard.

3) Subsurface Drainage Geotextile Filter is paid in accordance with Subsection 622.05.

4) Accepted quantities of perforated and non-perforated Corrugated Polyethylene Drainage Pipe are paid for at the contract unit price per linear foot

21. DITCH LINER

A. Description. Furnish labor, equipment, and materials to construct the lined drainage ditch as detailed in the plans to the satisfaction of the Project Manager.

B. Materials.

1) Provide Low Permeability Backfill having 100% passing the 1-inch sieve and a minimum of 30% passing the #200 sieve. Provide Low Permeability Backfill having a PI equal

SPECIAL PROVISIONS

CONTRACT NO. 10626

to 12 or greater and free of cobbles, organics, or deleterious material. Excavated material, meeting the requirements listed above, may be used as Low Permeability Backfill.

C. Construction Requirements.

- 1) Construct the lined ditch to the line and grade shown in the plans and details.

Excavate 16-inches below the design elevations and construct the final grade of the new ditch with a 16-inch thick layer of compacted low-permeability backfill.

- 2) Compact all ditch liner material in accordance with Subsection 203.03.3.

D. Method of Measurement.

- 1) Unclassified channel excavation and low-permeability backfill are measured in accordance with Subsection 203.04.

E. Basis of Payment

- 1) Include the cost of all materials, handling, equipment, tools and labor necessary to excavate for the new lined ditch in the contract unit bid price per cubic yard of unclassified channel excavation (Excavation-Unclass Channel).

- 2) Include the cost of all materials, handling, equipment, tools, and labor necessary to place the low-permeable embankment in the contract unit bid price per cubic yard of Low-Permeability Backfill.

22. COAL WASTE

A. Description. Work is occurring adjacent to historic coal mining facilities. Coal may be encountered during project activities.

B. Construction. Do not waste coal in drainages. Cover wasted coal with a minimum of 1 foot of excavated material including placement of topsoil.

C. Method of Measurement. No separate measurement will be made for wasting coal, as outlined above, including haul and placement.

D. Basis of Payment. Include all costs associated with wasting coal in the contract unit price for Unclassified Excavation.

23. TRAFFIC CONTROL/SEQUENCE OF OPERATIONS

A. Description. In addition to the requirements of Subsection 104.5, Maintenance of Work, and Subsection 108.04, Limitation of Operation, schedule operations as outlined below to provide the least amount of inconvenience possible to the traveling public and adjacent property owners.

B. Submittals. Submit a traffic control and loadout plan to the Project Manager a minimum of 7 calendar days prior to the preconstruction meeting. Submit a traffic control and loadout plan to the Project Manager for approval a minimum of 30 working days prior to beginning construction of the cut slope.

C. Construction Requirements. Maintain a minimum 12-foot traffic lane with a 2-foot outside shoulder during working hours. Provide positive barrier separation between traffic and construction equipment. Keep roadway clean and clear of debris.

D. Method of Measurement and Basis of Payment. Temporary Barrier Rail will be measured and paid per linear foot. Temporary Impact Attenuator will be measured and paid per each. Include all other costs associated with this provision in the lump sum Traffic Control bid item.

24. SEEDING

A. Description. This work consists of providing the necessary equipment and materials to accomplish revegetation of all areas disturbed by construction activities, and/or as directed by the project manager.

SPECIAL PROVISIONS

CONTRACT NO. 10626

Area Descriptions	
Area 1	Areas with slopes 3:1 and flatter
Area 2	Areas with slopes steeper than 3:1 or inaccessible to drill seed equipment
Area 3	N/A

B. Materials.

1) Fertilizer.

	Nitrogen lbs per acre	P2O5 lbs per acre
All Areas	10—15	30—35

2) Mulch—Compost.

	Biotic Soil Amendment/Media Rate	Engineered/Bonded Fiber Matrix Rate
Area 1 & 3	None	None
Area 2	2,000 lbs. per acre	3,500 lbs. per acre

3) Seed. Furnish the following reclamation seed mixtures. Use substitute species only if the recommended species is not available and substitution is approved by the Department's Reclamation Specialist.

Area 1			Drill Seeding Rate		
Scientific Name	Common Name	Variety	PLS / sq. ft.	% of Mix	Pounds PLS/ acre
<i>Elymus trachycaulus</i>	Slender wheatgrass	Pryor	6	8	2.0
<i>Pascopyrum smithii</i>	Western wheatgrass	Rosana	9	10	4.0
<i>Elymus lanceolatus</i>	Thickspike wheatgrass	Critana	14	16	4.0
<i>Nassella viridula</i>	Green needlegrass	Lodorm	17	20	4.0
<i>Bromus marginatus</i>	Mountain brome	Bromar or Garnet	7	9	4.0
<i>Poa secunda</i>	Canby bluegrass	Canbar	21	25	1.0
<i>Festuca idahoensis</i>	Idaho fescue	Joseph or Nezpurs	10	12	1.0
GRAND TOTAL			84	100	20.0

Area 2			Broadcast or Hydroseeding Rate		
Scientific Name	Common Name	Variety	PLS / sq. ft.	% of Mix	Pounds PLS/ acre
<i>Elymus trachycaulus</i>	Slender wheatgrass	Pryor	13	6	4.0
<i>Pascopyrum smithii</i>	Western wheatgrass	Rosana	13	6	6.0
<i>Elymus lanceolatus</i>	Thickspike wheatgrass	Critana	24	11	7.0
<i>Nassella viridula</i>	Green needlegrass	Lodorm	26	11	6.0
<i>Bouteloua gracilis</i>	Blue grama	Alma, Bad River or Birdseye	38	17	2.0
<i>Poa secunda</i>	Canby bluegrass	Canbar	42	19	2.0
<i>Festuca idahoensis</i>	Idaho fescue	Joseph or Nezpurs	20	9	2.0
<i>Ratibida columnifera</i>	Prairie coneflower	Stillwater	14	6	1.0

SPECIAL PROVISIONS

CONTRACT NO. 10626

<i>Achillea millefolium</i>	Western Yarrow	Eagle or Great Northern	33	15	0.5
GRAND TOTAL			223	100	30.5

C. Construction Requirements.

1) Topsoil. Salvage sufficient quantities of topsoil in accordance with Subsection 203.03.6 to place an average 4inch loose depth over all disturbed areas. Place the topsoil in accordance with Subsection 203.03.6 immediately following grading.

2) Seedbed preparation and application.

	Method	Seeding Depth	Season of Seeding
Area 1	Drill Seed	0.25 – 0.5 in	10/1—5/15
Area 2	Hydroseed		10/1—5/15

a) Condition fertilize and drill seed in accordance with Subsection 610.

b) Leave areas to be hydroseeded in a roughened condition, machinery tracks must run horizontal across the slope and parallel to the contour.

c) Rake, harrow or otherwise scarify broadcast seeded areas to incorporate the seed ¼ to ½ inch into the soil.

d) Seeding outside the designated seeding period is allowed only with prior approval from MDT's Reclamation Specialist.

3) Mulch—Compost Requirements.

a) Hydroseed Area 2 slopes with a Biotic Soil Amendment or Biotic Soil Media from the Department's QPL.

b) Within 24 hours of hydroseeding, apply a 100% wood Engineered Fiber Matrix or Bonded Fiber Matrix erosion control mulch.

c) Apply soil amendments, seed and mulch in accordance with manufacturer's recommendations and Subsection 610.03.2.F.

D. Method of Measurement and Basis of Payment.

1) Topsoil Salvaging and Placement is measured and paid in accordance with Subsection 203.04 and 203.05.

2) Revegetation pay items are measured in accordance with Subsection 610.04 Payment for the completed and accepted quantities is made under the following:

Pay Item	Pay Unit
Fertilizing Area No 1	Acre
Fertilizing Area No 2	Acre
Mulch-compost	Acre
Seeding Area No 1	Acre
Seeding Area No 2	Acre

END OF SECTION I

MDT NONDISCRIMINATION AND DISABILITY ACCOMMODATION NOTICE

Montana Department of Transportation ("MDT") is committed to conducting all of its business in an environment free from discrimination, harassment, and retaliation. In accordance with State and Federal law MDT prohibits any and all discrimination and protections are all inclusive (hereafter "protected classes") by its employees or anyone with whom MDT does business:

Federal protected classes

Race, color, religion, national origin, sex, age, disability, and genetic information.

State protected classes

Race; color; national origin; familial or marital status; pregnancy, childbirth, or medical conditions related to pregnancy or childbirth; creed; social origin or condition; genetic information; sex, sexual orientation, gender identification or expression; ancestry; age; mental or physical disability; political or religious affiliations or ideas; military service or veteran status; vaccination status or possession of immunity passport.

For the duration of this contract/agreement, the PARTY agrees as follows:

(1) Compliance with Regulations: The PARTY (hereinafter includes consultant) will comply with all Acts and Regulations of the United States and the State of Montana relative to Non-Discrimination in Federally and State-assisted programs of the U.S. Department of Transportation and the State of Montana, as they may be amended from time to time, which are herein incorporated by reference and made a part of this contract.

(2) Non-discrimination:

- a. The PARTY, with regard to the work performed by it during the contract, will not discriminate, directly or indirectly, on the grounds of any of the protected classes in the selection and retention of subcontractors, including procurements of materials and leases of equipment, employment, and all other activities being performed under this contract/agreement.
- b. PARTY will provide notice to its employees and the members of the public that it serves that will include the following:
 - i. Statement that PARTY does not discriminate on the grounds of any protected classes.
 - ii. Statement that PARTY will provide employees and members of the public that it serves with reasonable accommodations for any known disability, upon request, pursuant to the Americans with Disabilities Act as Amended (ADA).

- iii. Contact information for PARTY's representative tasked with handling non-discrimination complaints and providing reasonable accommodations under the ADA.
- iv. Information on how to request information in alternative accessible formats.
- c. In accordance with Mont. Code Ann. § 49-3-207, PARTY will include a provision, in all of its hiring/subcontracting notices, that all hiring/subcontracting will be on the basis of merit and qualifications and that PARTY does not discriminate on the grounds of any protected class.

(3) Participation by Disadvantaged Business Enterprises (DBEs):

- a. If the PARTY receives federal financial assistance as part of this contract/agreement, the PARTY must comply with applicable federal and state laws regarding the DBEs, including but not limited to 49 CFR Part 26.
- b. By signing this agreement the PARTY assures that:
The contractor, sub recipient or subcontractor shall not discriminate on the basis of race, color, national origin, or sex in the performance of this contract. The contractor shall carry out applicable requirements of 49 CFR part 26 in the award and administration of DOT-assisted contracts. Failure by the contractor to carry out these requirements is a material breach of this contract, which may result in the termination of this contract or such other remedy as the recipient deems appropriate.
- c. PARTY must include the above assurance in each contract/agreement the PARTY enters.

(4) Solicitation for Subcontracts, Including Procurement of Materials and Equipment:

In all solicitations, either by competitive bidding, or negotiation, made by the PARTY for work to be performed under a subcontract, including procurements of materials, or leases of equipment, each potential subcontractor or supplier will be notified by the PARTY of the PARTY's obligation under this contract/agreement and all Acts and Regulations of the United States and the State of Montana related to Non-Discrimination.

(5) Information and Reports: The PARTY will provide all information and reports required by the Acts, Regulations, and directives issued pursuant thereto and will permit access to its books, records, accounts, other sources of information and its facilities as may be determined by MDT or relevant US DOT Administration to be pertinent to ascertain compliance with such Acts, Regulations, and instructions. Where any information required of a contractor is in the exclusive possession of another who fails or refuses to furnish the information, the PARTY will so certify to MDT or relevant US DOT Administration, as appropriate, and will set forth what efforts it has made to obtain the information.

(6) Sanctions for Noncompliance: In the event of a PARTY's noncompliance with the Non-discrimination provisions of this contract/agreement, MDT will impose such sanctions as it

or the relevant US DOT Administration may determine to be appropriate, including, but not limited to:

- a. Withholding payments to the PARTY under the contract/agreement until the PARTY complies; and/or
- b. Cancelling, terminating, or suspending the contract/agreement, in whole or in part.

(7) Pertinent Non-Discrimination Authorities:

During the performance of this contract/agreement, the PARTY, for itself, its assignees, and successor in interest, agrees to comply with the following non-discrimination statutes and authorities; including but not limited to:

Federal

- Title VI of the Civil Rights Act of 1964 (42 U.S.C. § 2000d *et seq.*, 78 stat. 252), (prohibits discrimination on the basis of race, color, national origin); and 49 CFR Part 21;
- The Uniform Relocation Assistance and Real Property Acquisition Policies Act of 1970, (42 U.S.C. § 4601 *et seq.*), (prohibits unfair treatment of persons displaced or whose property has been acquired because of Federal or Federal-aid programs and projects);
- Sections 162 and 301(g) of the Federal-Aid Highway Act of 1973, (Public Law No. 93-87, 87 Stat. 250, codified at 23 U.S.C. § 324), (prohibits discrimination on the basis of sex);
- Section 504 of the Rehabilitation Act of 1973, (29 U.S.C. § 794 *et seq.*), (prohibits discrimination on the basis of disability); and 49 CFR Part 27;
- The Age Discrimination Act of 1975, (42 U.S.C. § 6101 *et seq.*), (prohibits discrimination on the basis of age);
- Section 520 of the Airport and Airways Improvement Act of 1982, (49 U.S.C. § 47123), (prohibits discrimination based on race, creed, color, national origin, or sex);
- The Civil Rights Restoration Act of 1987, (Public Law No. 100-259), (broadened the scope, coverage, and applicability of Title VI of the Civil Rights Act of 1964, The Age Discrimination Act of 1975, and Section 504 of the Rehabilitation Act of 1973, by expanding the definition of the terms “programs or activities” to include all of the programs or activities of the Federal-aid recipients, sub-recipients, and contractors, whether such programs or activities are Federally funded or not);
- Titles II and III of the Americans with Disabilities Act, (42 U.S.C. §§ 12131 through 12189), which prohibits discrimination on the basis of disability in the operation of public entities, public and private transportation systems, places of public accommodation, and

certain testing entities as implemented by Department of Transportation regulations at 49 CFR parts 37 and 38;

- Title IX of the Education Amendments of 1972, as amended, which prohibits discrimination on the basis of sex in education programs or activities (20 U.S.C. § 1681 *et seq.*).

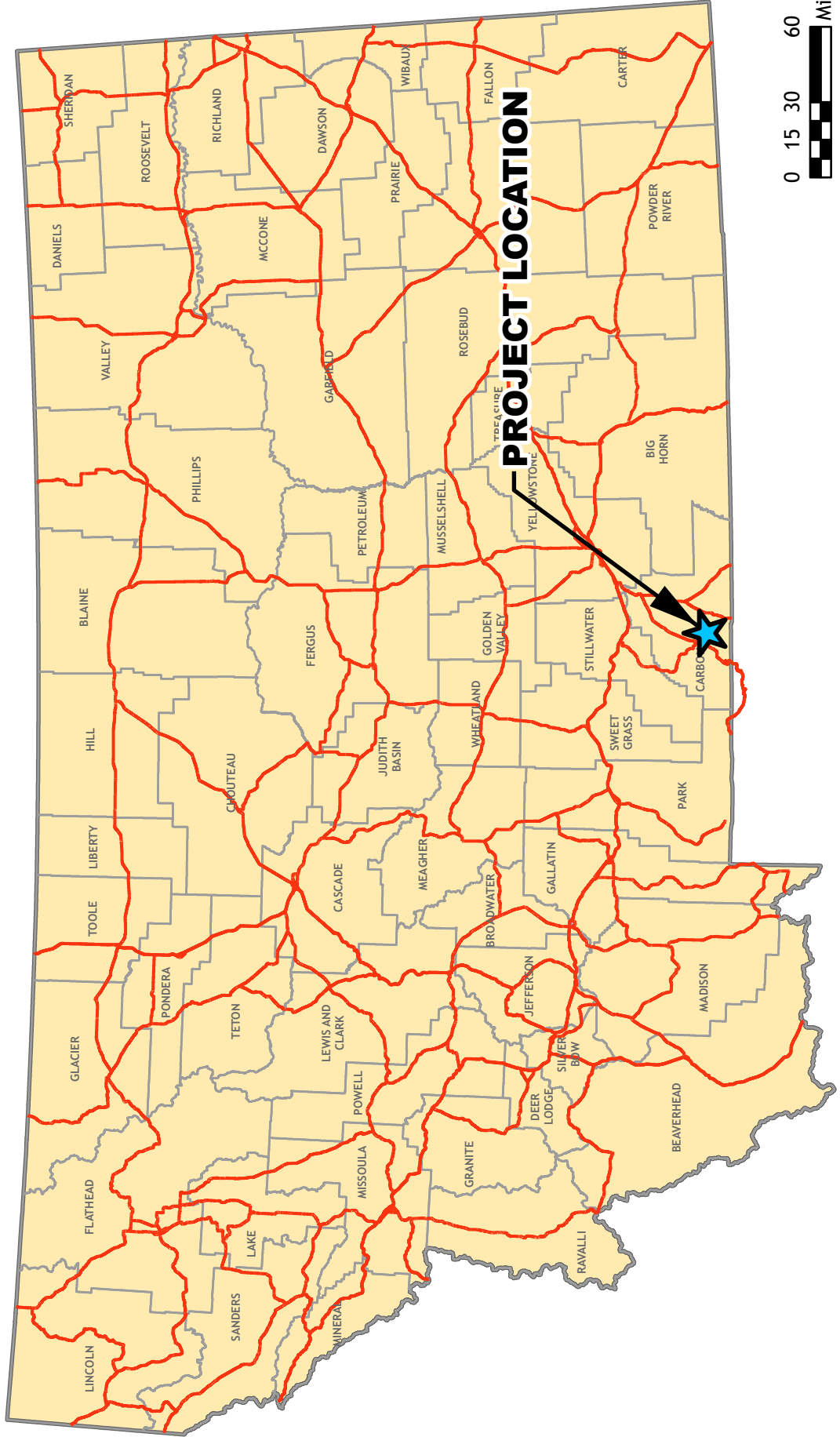
State

- Mont. Code Ann. § 49-3-205 Governmental services;
- Mont. Code Ann. § 49-3-206 Distribution of governmental funds;
- Mont. Code Ann. § 49-3-207 Nondiscrimination provision in all public contracts.

(8) Incorporation of Provisions: The PARTY will include the provisions of paragraphs one through seven in every subcontract, including procurements of materials and leases of equipment, unless exempt by the Acts, the Regulations and/or directives cited therein. The PARTY will take action with respect to any subcontract or procurement as MDT or the relevant US DOT Administration may direct as a means of enforcing such provisions including sanctions for noncompliance. Provided, that if the PARTY becomes involved in, or is threatened with litigation by a subcontractor, or supplier because of such direction, the PARTY may request MDT to enter into any litigation to protect the interests of MDT. In addition, the PARTY may request the United States to enter into the litigation to protect the interests of the United States.

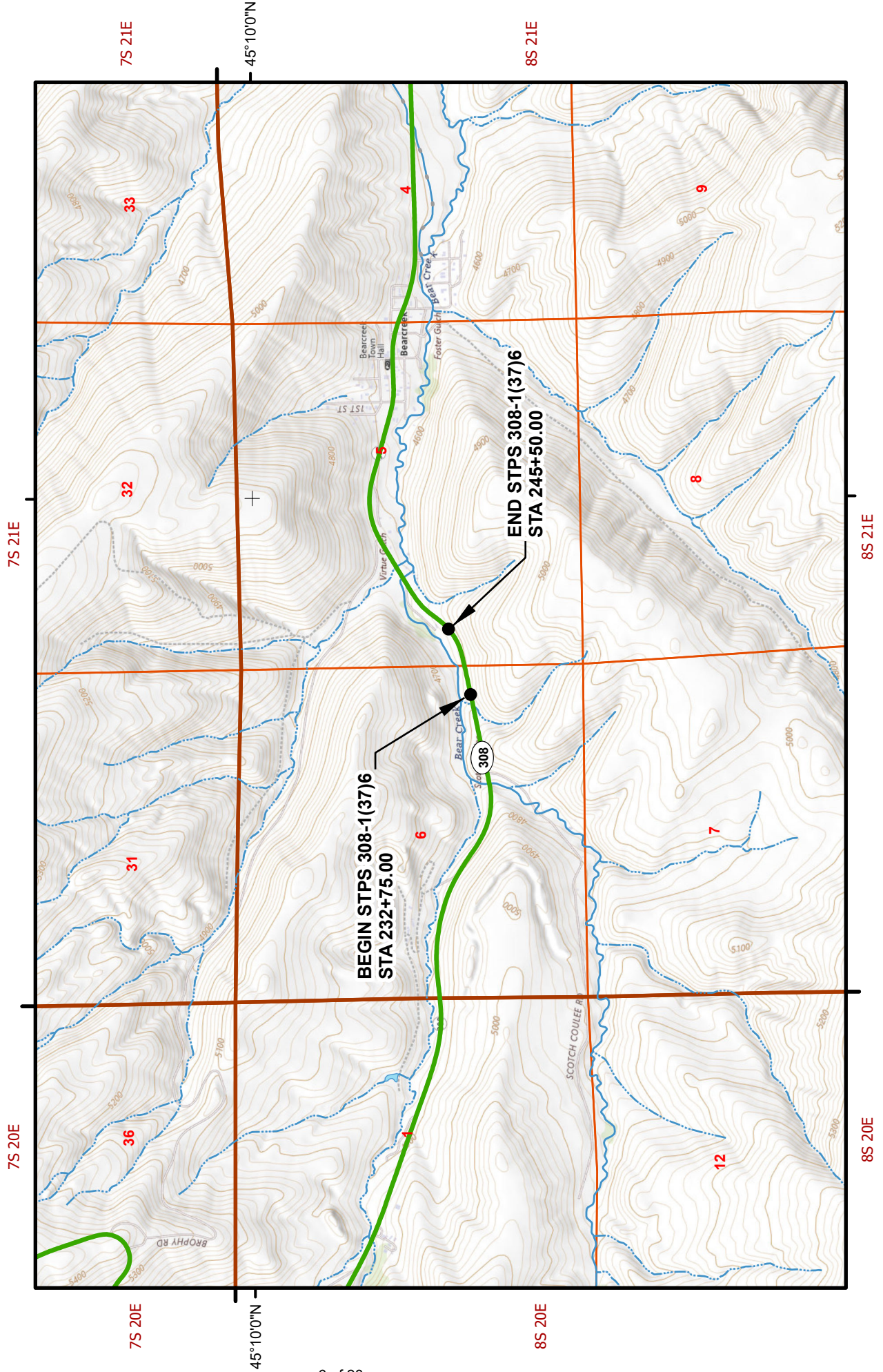
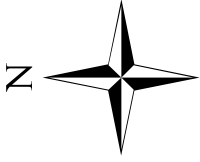


FEDERAL AID PROJECT STPS 308-1(37)6
SLIDE REPAIR
SLIDE REPAIR - W OF BEARCREEK
CONTROL NUMBER 9970000
PROJECT LOCATION STATE MAP - MONTANA





FEDERAL AID PROJECT STPS 308-1(37)6
SLIDE REPAIR
SLIDE REPAIR - W OF BEARCREEK
CONTROL NUMBER 9970000
PROJECT LOCATION QUAD MAP - CARBON COUNTY



MDT Boring Log Descriptive Terminology

Key to Soil Symbols and Terms

01/18/12



SOIL CLASSIFICATION CHART

MAJOR DIVISIONS			SYMBOLS		TYPICAL
			GRAPH	LETTER	DESCRIPTIONS
COARSE GRAINED SOILS	GRAVEL AND GRAVELLY SOILS	CLEAN GRAVELS (LITTLE OR NO FINES)		GW	Well-graded gravels, gravel sand mixtures, little or no fines.
				GP	Poorly graded gravels, gravel-sand mixtures, little or no fines.
		GRAVELS WITH FINES (APPRECIABLE AMOUNT OF FINES)		GM	Silty gravels, gravel-sand-silt mixtures.
	SAND AND SANDY SOILS	CLEAN SANDS (LITTLE OR NO FINES)		SW	Well-graded sands, gravelly sands, little or no fines.
				SP	Poorly graded sands, gravelly sands, little or no fines.
		SANDS WITH FINES (APPRECIABLE AMOUNT OF FINES)		SM	Silty sands, sand-silt mixtures.
			SC	Clayey sands, sand-clay mixures.	
FINE GRAINED SOILS	SILTS AND CLAYS	LIQUID LIMIT LESS THAN 50		ML	Inorganic silts and very fine sands, rock flour, silty or clayey fine sands or clayey silts with slight plasticity.
				CL	Inorganic clays of low to medium plasticity, gravelly clays, sandy clays, silty clays, lean clays.
				OL	Organic silts and organic silty clays of low plasticity.
	SILTS AND CLAYS	LIQUID LIMIT GREATER THAN 50		MH	Inorganic silts, micaceous or diatomaceous fine sandy or silty soils, elastic silts.
				CH	Inorganic clays of high plasticity, fat clays.
				OH	Organic clays of medium to high plasticity, organic silts.
HIGHLY ORGANIC SOILS				PT	Peat and other highly organic soils.

NOTE: DUAL SYMBOLS ARE USED TO INDICATE BORDERLINE SOIL CLASSIFICATIONS

Notes

See Soil Boring Information Special Provision.

SPT (Standard Penetration Test-ASTM D1586):

The number of blows of a 140 lb (63.6 kg) hammer

falling 2.5 ft (750 mm) used to drive a 2 in (50 mm)

O.D. Split Spoon sampler for a total of 1.5 ft (0.45 m) of penetration.

Written as follows:

first 0.5 ft (0.15 m) - second 0.5 ft (0.15 m) - third 0.5 ft (0.15 m)

(ex: 1-3-9)

Note: if the number of blows exceeds 50 before 0.5 ft

(0.15 m) of penetration is achieved, the actual penetration

rounded to the nearest 0.1 ft (0.03 m) follows the number of

blows in parentheses (ex: 12-24-50 (0.09 m),

34-50 (0.4 ft), or 100 (0.3 ft)). WR denotes a zero blow count with

the weight of the rods only.

WH denotes a zero blow count with the weight of the rods

plus the weight of the hammer.

MC=Moisture Content, LL=Liquid limit, PL=Plastic Limit

-200%=percent soil passing 200 sieve, DD=Dry Density

Soil Classifications are Based on the Unified Soil Classification System, ASTM D2487 and D2488.

Also included are the AASHTO group classifications (M145). Descriptions are based on visual observation, except where they have been modified to reflect results of laboratory tests as deemed appropriate.

Example soil description: Sandy FAT CLAY (CH), soft, wet, brown. (A-7)

Order of Descriptors

- Group Name
- Consistency or Relative Density
- Moisture Condition
- Color
- Particle size descriptor(s) (coarse grained soils only)
- Angularity of coarse grained soils
- Other relevant notes

Criteria For Descriptors

Consistency of Fine Grained Soils

Consistency	N-Value (uncorrected)
Very Soft	< 2
Soft	2 - 4
Medium Stiff	5 - 8
Stiff	9 - 15
Very Stiff	16 - 30
Hard	> 30

Apparent Density of Coarse Grained Soils

Relative Density	N-Value (uncorrected)
Very Loose	< 4
Loose	4 - 10
Medium Dense	11 - 30
Dense	31 - 50
Very Dense	> 50

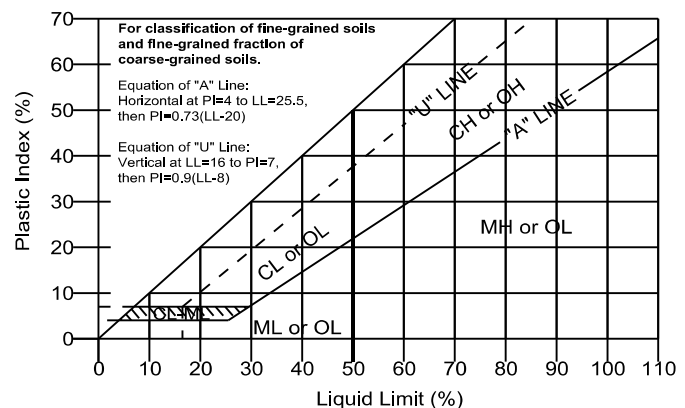
Moisture Condition

- | | |
|-------|--|
| Dry | -Absence of moisture, dusty, dry to the touch. |
| Moist | -Damp, but no visible water. |
| Wet | -Visible free water. |

Definition of Particle Size Ranges

Soil Component	Size Range
Boulder	> 12 in (300 mm)
Cobble	3 in (75 mm) - 12 in (300 mm)
Gravel	No. 4 Sieve (4.75 mm) to 3 in (75 mm)
Sand	No. 200 (0.075 mm) to No. 4 Sieves (4.75 mm)
Silt	< No. 200 Sieve (0.075 mm)*
Clay	< No. 200 Sieve (0.075 mm)*

*Atterberg limits and chart below to differentiate between silt and clay.



Angularity of Coarse-Grained Particles

- | | |
|------------|--|
| Angular | -Particles have sharp edges and relative plane sides with unpolished surfaces. |
| Subangular | -Particles are similar to angular description, but have rounded edges. |
| Subrounded | -Particles have nearly plane sides, but have no edges. |
| Rounded | -Particles have smoothly curved sides and well-rounded corners and edges. |

MDT Boring Log Descriptive Terminology

Key to Rock Symbols and Terms

01/18/12



Rock Type	Symbol	Rock Type	Symbol	Rock Type	Symbol
Argillite		Dolomite		Quartzite	
Basalt		Gneiss		Rhyolite	
Bedrock (other)		Granitic		Sandstone	
Breccia		Limestone		Schist	
Claystone		Siltstone		Shale	
		Conglomerate			

Order of Descriptors

- Rock Type
- Color
- Grain size (if applicable)
- Stratification/Foliation (as applicable)
- Field Hardness
- Other relevant notes

Criteria For Descriptors

Grain Size

Description	Characteristic
Coarse Grained	-Individual grains can be easily distinguished by eye
Fine Grained	-Individual grains can be distinguished with difficulty

Stratum Thickness

Thickly Bedded	3-10 ft (1-3 m)
Medium Bedded	1-3 ft (300 mm - 1 m)
Thinly Bedded	2-12 in (50-300 mm)
Very Thinly Bedded	< 2 in (50 mm)

Rock Field Hardness

Very Soft	-Can be carved with knife. Can be excavated readily with point of rock hammer. Can be scratched readily by fingernail.
Soft	-Can be grooved or gouged readily by knife or point of rock hammer. Can be excavated in fragments from chips to several inches in size by moderate blows of the point of a rock hammer.
Medium	-Can be grooved or gouged 0.05 in (2 mm) deep by firm pressure of knife or rock hammer point. Can be excavated in small chips to pieces about 1 in (25 mm) maximum size by hard blows of the point of a rock hammer.
Moderately hard	-Can be scratched with knife or pick. Gouges or grooves to 0.25 in (6 mm) can be excavated by hard blow of rock hammer. Hand specimen can be detached by moderate blows.
Hard	-Can be scratched with knife or pick only with difficulty. Hard hammer blows required to detach hand specimen.
Very Hard	-Cannot be scratched with knife or sharp rock hammer point. Breaking of hand specimens requires several hard blows of a rock hammer.

Notes:

UCS = Unconfined Compressive Strength obtained from laboratory testing at the given depth.

See Soil Boring Information Special Provision.

Miscellaneous Soil/Rock Symbols and Terms

	Concrete
	Asphalt
	Water
	Boulders and Cobbles
	Coal
	Fill
	Millings
	Topsoil

Explanation of Text Fields in Boring Logs:

Material Description: Lithologic Description of soil or rock encountered.

Remarks: Comments on drilling, including method, bit type, and problems encountered. Unless stated on logs as being surveyed by district survey, all locations are considered approximate.

General Notes

- Descriptions on these boring logs apply only at the specific boring, and at the time the borings were made. These logs are not warranted to be representative of subsurface conditions at other locations or times.
- Water level observations apply only at the specific boring, and at the time the borings were made. Due to the variability of groundwater measurements given the type of drilling used, and the stratification of the soil in the boring, these logs are not warranted to be representative of groundwater conditions at other locations or times.
- Other terms may be used as descriptors, as defined by the profession.

-Soil and Rock descriptions are based on visual observation, except where they have been modified to reflect results of laboratory tests as deemed appropriate.

Operation Types:

	Auger
	Casing Advancer
	Core Barrel
	Drive Casing

Sample Types:

	Split Spoon
	Shelby
	Bulk Sample
	Grab Sample
	Cone Penetrometer
	Vane Shear
	Special Samplers
	Testpit

Example Rock Log

SANDSTONE, gray, fine grained, thickly bedded, hard field hardness.



LOG OF BORING

Boring 9970000-1

Sheet 1 of 2

Project: Slide Repair - W of Bearcreek				Rig: CME 1050		Boring Location N: 331217.7 ft				Station: 236 + 95		
				Hammer: Auto		Coordinates E: 2051851 ft				Offset: 16 ft R		
Project Number: STPS 308-1(36)6			UPN: 9970000		Boring Diameter: 8"		System: MT S.P. (E)				Ground Elevation: 4698.1 ft	
Date Started: 3/17/21			Date Finished: 3/18/21		Drilling Fluid: None		Location Source: Surveyed				Elevation Source: Surveyed	
Driller: Duncan			Notes:				PLS TRS-QQ: 8S 21E 6 - DA					
Logger: Kluth							Abandonment: Cuttings					

Depth (ft) Elev. (ft)	Operation	Sample Type	Recovery (%)	RQD (%)	Blow Count	Lithology	Material Description	Depth (ft) Elev. (ft)	MC (%)	LL	PL	-200 (%)	Qu (psi)	DD (pcf)	Remarks and Other Tests
			50		6 - 9 - 10		Millings.	0.4 4697.7	14						Hollow stem augers with finger bit.
			50		50/0.2ft		BASE COURSE, Poorly-Graded GRAVEL with sand (GP), medium dense, moist to dry, tan to brown, fine to coarse grained, angular to subangular, [A-1].	2.5 4695.6	1						Cobble at 2.5 ft.
			75		4 - 5 - 10		Silty SAND with gravel (SM), medium dense, moist to dry, brown to tan, fine grained, [A-2].	11		NP	35				
5 4693.7			100		6 - 11 - 15		Gravel consists of angular granite fragments.	4.5 4693.6	4						Installed 29.9 ft. of SI casing below existing ground. Grouted annulus.
			100		7 - 6 - 7		Poorly-Graded SAND with silt and gravel (SP-SM), medium dense, dry to moist, brown to tan, fine to coarse grained, angular to subangular, [A-2].	1	5						Flush-mount cover at existing ground.
			25		6 - 13 - 14		Silty GRAVEL with sand (GM), medium dense, dry, gray to tan, fine to coarse grained, angular to subangular, [A-2].	7.5 4690.6	1						
10 4688.7			100		5 - 12 - 16		Sandy SILTSTONE, brown to tan, very soft to soft field hardness.	9.3 4688.8	13	30	24	87			Installed VW piezometer at 8.9 ft.
			100		15 - 34 - 27			6							
			100		9 - 21 - 16		SHALE, gray, very soft to soft field hardness. Occasional coal seams.	13.2 4684.9	10	29	31	54			
15 4683.7			100		11 - 13 - 35			13	50	27	63				
			100		6 - 28 - 32			13							
			100		8 - 26 - 48			15							
20 4678.7			100		18 - 43 - 50/0.4ft		Sandy SHALE, dark gray, soft to medium field hardness. Occasional coal seams.	18.0 4680.1	14						
			100		11 - 30 - 47			14							
			100		28 - 50/0.4ft		Sandy SILTSTONE, light gray, medium to moderately hard field hardness.	22.0 4676.1	4						
25 4673.7			50		50/0.3ft			1							
			100		10 - 34 - 50/0.4ft		Sandy SHALE, dark gray, soft to medium field hardness.	26.4 4671.7	12						

Water Level Observations			<input type="checkbox"/> During Drilling: Not Encountered <input checked="" type="checkbox"/> After Drilling: Not Encountered +0.5 hrs. Augers Out		Remarks: Borehole caved at 30.8 ft., After Drilling, Augers Out
<input checked="" type="checkbox"/> End of Drilling: Not Encountered. Augers In					

(2) MDT LOG OF BORING - MDT, 2016+WELL, V1, GDT - 2/23/22 12:57 - G:\PROJECTS\2018+PROJECTS\9970000.GPJ



LOG OF BORING

Boring 9970000-1

Sheet 2 of 2

Project: Slide Repair - W of Bearcreek				Rig: CME 1050		Boring Location N: 331217.7 ft				Station: 236 + 95			
				Hammer: Auto		Coordinates E: 2051851 ft				Offset: 16 ft R			
Project Number: STPS 308-1(36)6				UPN: 9970000		Boring Diameter: 8"				System: MT S.P. (E)			
						Datum: NAD83				Ground Elevation: 4698.1 ft			
Date Started: 3/17/21				Date Finished: 3/18/21		Drilling Fluid: None				Location Source: Surveyed			
										Elevation Source: Surveyed			
Driller: Duncan				Notes:						PLS TRS-QQ: 8S 21E 6 - DA			
Logger: Kluth										Abandonment: Cuttings			

Depth (ft) Elev. (ft)	Operation	Sample Type	Recovery (%)	RQD (%)	Blow Count	Lithology	Material Description	Depth (ft) Elev. (ft)	MC (%)	LL	PL	-200 (%)	Qu (psi)	DD (pcf)	Remarks and Other Tests
30 4668.1			50		50/0.5ft		Sandy SHALE, continued.	31.3 4666.8	4						Installed VW piezometer at 28.9 ft.

Boring Depth: 31.3 ft, Elevation: 4666.8 ft

Water Level Observations		<input type="checkbox"/> During Drilling: Not Encountered <input type="checkbox"/> After Drilling: Not Encountered +0.5 hrs. Augers Out	Remarks: Borehole caved at 30.8 ft., After Drilling, Augers Out
<input type="checkbox"/> End of Drilling: Not Encountered, Augers In			

(2) MDT LOG OF BORING - MDT, 2016+WELL, V1.GDT - 2/23/22 12:57 - G:\PROJECTS\2018+PROJECTS\9970000.GPJ



LOG OF BORING

Boring 9970000-2

Sheet 1 of 2

Project: Slide Repair - W of Bearcreek				Rig: CME 850		Boring Location N: 331253.5 ft				Station: 237 + 16			
				Hammer: Auto		Coordinates E: 2051865 ft				Offset: 16 ft L			
Project Number: STPS 308-1(36)6			UPN: 9970000		Boring Diameter: 8"		System: MT S.P. (E)				Ground Elevation: 4697.3 ft		
Date Started: 9/14/21			Date Finished: 9/14/21		Drilling Fluid: None		Location Source: Surveyed				Elevation Source: Surveyed		
Driller: Duncan			Notes:				PLS TRS-QQ: 8S 21E 6 - DA						
Logger: Kluth							Abandonment: Cuttings						

Depth (ft) Elev. (ft)	Operation	Sample Type	Recovery (%)	RQD (%)	Blow Count	Lithology	Material Description	Depth (ft) Elev. (ft)	MC (%)	LL	PL	-200 (%)	Qu (psi)	DD (pcf)	Remarks and Other Tests
							BASE COURSE, Poorly-Graded GRAVEL with silt and sand (GP-GM), dry to moist, gray, fine to coarse grained, angular to rounded, [A-1].	2.0 4695.3							Hollow stem augers with finger bit.
			75		11 - 22 - 17		FILL, Poorly-Graded GRAVEL with silt and sand (GP-GM), dense, dry, brown, fine to coarse grained, angular to subrounded, [A-1].	4.0 4693.3	2						
5 4692.3			100		6 - 11 - 8		Poorly-Graded GRAVEL with sand (GP), medium dense, dry to moist, brown, fine to coarse grained, angular to subangular, [A-1]. Coarse fragments of granite.		2						
			75		4 - 9 - 9				4						
10 4687.3			75		4 - 8 - 14		CLAYSTONE, brown to gray, very soft to soft field hardness. Frequent coal seams. Iron-oxide staining.	9.0 4688.3		14	45	27	71		
			50		6 - 9 - 16				18						
			100		7 - 13 - 14				24						
15 4682.3			75		8 - 16 - 25				16						
			100		23 - 18 - 13		SHALE, brown to gray, very soft to soft field hardness. Frequent coal seams.	16.5 4680.8		8					
20 4677.3			100		21 - 20 - 18		Silty SANDSTONE, tan to gray, fine grained, very soft to medium field hardness.	19.3 4678.0		4					
25 4672.3			0		50/0.4ft		COAL, black.	24.5 4672.8		9					
			100		50/0.3ft										

Water Level Observations			<input type="checkbox"/> During Drilling: Not Encountered <input checked="" type="checkbox"/> After Drilling: Not Encountered +0.5 hrs. Augers Out		Remarks: Borehole caved at 17.0 ft., After Drilling, Augers Out
<input checked="" type="checkbox"/> End of Drilling: Not Encountered, Augers In					

(2) MDT LOG OF BORING - MDT, 2016+WELL, V1, GDT - 2/23/22 12:57 - G:\PROJECTS\2018+PROJECTS\9970000.GPJ



LOG OF BORING

Boring 9970000-2

Sheet 2 of 2

Project: Slide Repair - W of Bearcreek				Rig: CME 850		Boring Location N: 331253.5 ft				Station: 237 + 16		
				Hammer: Auto		Coordinates E: 2051865 ft				Offset: 16 ft L		
Project Number: STPS 308-1(36)6			UPN: 9970000		Boring Diameter: 8"		System: MT S.P. (E)				Ground Elevation: 4697.3 ft	
Date Started: 9/14/21			Date Finished: 9/14/21		Drilling Fluid: None		Location Source: Surveyed				Elevation Source: Surveyed	
Driller: Duncan			Notes:						PLS TRS-QQ: 8S 21E 6 - DA			
Logger: Kluth									Abandonment: Cuttings			

Depth (ft)	Operation	Sample Type	Recovery (%)	RQD (%)	Blow Count	Lithology	Material Description	Depth (ft)	MC (%)	LL	PL	-200 (%)	Qu (psi)	DD (pcf)	Remarks and Other Tests
30	X	X	100		21 - 27 - 50/0.1ft	X	COAL, continued.	28.5	9						
4667.3							Sandy SHALE, light gray, very soft to soft field hardness.	4668.8							
								30.6							

Boring Depth: 30.6 ft, Elevation: 4666.7 ft

Water Level Observations		<input type="checkbox"/> During Drilling: Not Encountered <input type="checkbox"/> After Drilling: Not Encountered +0.5 hrs. Augers Out	Remarks: Borehole caved at 17.0 ft., After Drilling, Augers Out
<input checked="" type="checkbox"/> End of Drilling: Not Encountered, Augers In			

(2) MDT LOG OF BORING - MDT, 2016+WELL, V1, GDT - 2/23/22 12:57 - G:\PROJECTS\2018+PROJECTS\9970000.GPJ



LOG OF BORING

Boring 9970000-3

Sheet 1 of 2

Project: Slide Repair - W of Bearcreek				Rig: CME 850		Boring Location N: 331268.9 ft				Station: 237 + 87			
				Hammer: Auto		Coordinates E: 2051935 ft				Offset: 17 ft L			
Project Number: STPS 308-1(36)6				UPN: 9970000		Boring Diameter: 8"				System: MT S.P. (E)			
						Datum: NAD83				Ground Elevation: 4694.9 ft			
Date Started: 9/14/21				Date Finished: 9/14/21		Drilling Fluid: None				Location Source: Surveyed			
										Elevation Source: Surveyed			
Driller: Duncan				Notes:				PLS TRS-QQ: 8S 21E 6 - DA					
Logger: Kluth								Abandonment: Cuttings					

Depth (ft) Elev. (ft)	Operation	Sample Type	Recovery (%)	RQD (%)	Blow Count	Lithology	Material Description	Depth (ft) Elev. (ft)	MC (%)	LL	PL	-200 (%)	Qu (psi)	DD (pcf)	Remarks and Other Tests
5 4689.9		X	75		3 - 4 - 5		BASE COURSE, Poorly-Graded GRAVEL with silt and sand (GP-GM), dry to moist, gray, fine to coarse grained, angular to rounded, [A-1].	1.8 4693.1	2						Hollow stem augers with finger bit.
							FILL, Lean CLAY with sand (CL), stiff, moist, brown, [A-6].								
		X	75		5 - 6 - 6		Poorly-Graded GRAVEL with sand (GP), medium dense to loose, dry to moist, tan to gray, fine to coarse grained, angular to subangular, [A-1].	4.0 4690.9	4						
		X	100		4 - 4 - 3			6							
10 4684.9		X	100		3 - 4 - 8		Lean CLAY (CL), medium stiff to stiff, moist, brown to gray, [A-6]. Iron -oxide staining.	7.6 4687.3	18	37	22				
		X	100		7 - 10 - 13		SHALE, gray to dark brown, very soft to soft field hardness. Seams and interbedded layers (<0.5 ft.) of coal.	11.0 4683.9	15						
15 4679.9		X	100		9 - 14 - 16		Sandy SHALE, gray, very soft to soft field hardness.	14.8 4680.1	12						
20 4674.9		X	75		9 - 12 - 11			19							
25 4669.9		X	100		9 - 17 - 50/0.4ft		Light gray.	10							

Water Level Observations				<input type="checkbox"/> During Drilling: Not Encountered <input checked="" type="checkbox"/> After Drilling: Not Encountered +0.5 hrs. Augers Out		Remarks: Borehole caved at 17.6 ft., After Drilling, Augers Out
<input checked="" type="checkbox"/> End of Drilling: Not Encountered, Augers In						

(2) MDT LOG OF BORING - MDT, 2016+WELL, V1, GDT - 2/23/22 12:57 - G:\PROJECTS\2018-PROJECTS\9970000.GPJ



LOG OF BORING

Boring 9970000-3

Sheet 2 of 2

Project: Slide Repair - W of Bearcreek				Rig: CME 850		Boring Location N: 331268.9 ft				Station: 237 + 87			
				Hammer: Auto		Coordinates E: 2051935 ft				Offset: 17 ft L			
Project Number: STPS 308-1(36)6				UPN: 9970000		Boring Diameter: 8"				System: MT S.P. (E)			
						Datum: NAD83				Ground Elevation: 4694.9 ft			
Date Started: 9/14/21				Date Finished: 9/14/21		Drilling Fluid: None				Location Source: Surveyed			
										Elevation Source: Surveyed			
Driller: Duncan				Notes:						PLS TRS-QQ: 8S 21E 6 - DA			
Logger: Kluth										Abandonment: Cuttings			

Depth (ft) Elev. (ft)	Operation	Sample Type	Recovery (%)	RQD (%)	Blow Count	Lithology	Material Description	Depth (ft) Elev. (ft)	MC (%)	LL	PL	-200 (%)	Qu (psi)	DD (pcf)	Remarks and Other Tests
			100		50/0.2ft		Sandy SHALE, continued.	29.2	11						
								Boring Depth: 29.2 ft, Elevation: 4665.7 ft							

Water Level Observations				<input type="checkbox"/> During Drilling: Not Encountered <input type="checkbox"/> After Drilling: Not Encountered +0.5 hrs. Augers Out				Remarks: Borehole caved at 17.6 ft., After Drilling, Augers Out			
<input type="checkbox"/> End of Drilling: Not Encountered. Augers In											

(2) MDT LOG OF BORING - MDT, 2016+WELL, V1.GDT - 2/23/22 12:57 - G:\PROJECTS\2018+PROJECTS\9970000.GPJ



LOG OF BORING

Boring 9970000-4

Sheet 1 of 2

Project: Slide Repair - W of Bearcreek				Rig: CME 850		Boring Location N: 331107.7 ft				Station: 236 + 44			
Project Number: STPS 308-1(36)6				UPN: 9970000		Hammer: Auto		Coordinates E: 2051823 ft				Offset: 118 ft R	
Date Started: 9/15/21				Date Finished: 9/20/21		Boring Diameter: 8"		System: MT S.P. (E)				Ground Elevation: 4732.1 ft	
Drilling Fluid: None				Location Source: Surveyed		Datum: NAD83		Elevation Source: Surveyed					
Driller: Duncan				Notes:				PLS TRS-QQ: 8S 21E 6 - DA					
Logger: Kluth								Abandonment: Cuttings					

Depth (ft)	Operation	Sample Type	Recovery (%)	RQD (%)	Blow Count	Lithology	Material Description	Depth (ft)	MC (%)	LL	PL	-200 (%)	Qu (psi)	DD (pcf)	Remarks and Other Tests	
5			50		6 - 10 - 13		Lean CLAY (CL), very stiff to stiff, dry to moist, brown, [A-6].	9								
4727.1			50		5 - 8 - 4			11								
10			50		3 - 2 - 2		Sandy Lean CLAY (CL), soft to stiff, moist, brown to tan, [A-4]. Frequent thin seams of silt.	7.0								
4722.1			75		2 - 4 - 5			4725.1								
15			50		3 - 4 - 5			13								
4717.1			50		3 - 5 - 5			12								
20			100		4 - 4 - 5			11								
4712.1			75		5 - 5 - 8			12								
25			75		6 - 6 - 9		Silty SAND with gravel (SM), medium dense, moist, brown to tan, fine grained, [A-4]. Seams and interbedded layers (<0.5 ft.) of clayey sand.	15								
4707.1			100		6 - 10 - 12			18.3								
30			100		6 - 9 - 9			4713.8								
			75		4 - 8 - 21		CLAYSTONE, gray to brown, very soft to soft field hardness. Iron-oxide staining.	8			NP	44				
			100		8 - 16 - 39			12			NP	48				
			100		11 - 37 - 50/0.3ft			24.2								
4702.1			25		50/0.3ft		Silty SANDSTONE, tan, fine grained, very soft to medium field hardness. Interbedded layers (<1.0 ft.) of sandy siltstone and sandy shale.	4707.9								
								27.1								
								4705.0								

Water Level Observations				During Drilling: Not Encountered				Remarks: Borehole caved at 37.0 ft., After Drilling, Augers Out			
End of Drilling: Not Encountered, Augers In				After Drilling: Not Encountered +0.5 hrs. Augers Out							



LOG OF BORING

Boring 9970000-4

Sheet 2 of 2

Project: Slide Repair - W of Bearcreek				Rig: CME 850		Boring Location N: 331107.7 ft				Station: 236 + 44		
				Hammer: Auto		Coordinates E: 2051823 ft				Offset: 118 ft R		
Project Number: STPS 308-1(36)6			UPN: 9970000		Boring Diameter: 8"		System: MT S.P. (E)				Ground Elevation: 4732.1 ft	
Date Started: 9/15/21			Date Finished: 9/20/21		Drilling Fluid: None		Location Source: Surveyed				Elevation Source: Surveyed	
Driller: Duncan			Notes:						PLS TRS-QQ: 8S 21E 6 - DA			
Logger: Kluth									Abandonment: Cuttings			

Depth (ft) Elev. (ft)	Operation	Sample Type	Recovery (%)	RQD (%)	Blow Count	Lithology	Material Description	Depth (ft) Elev. (ft)	MC (%)	LL	PL	-200 (%)	Qu (psi)	DD (pcf)	Remarks and Other Tests
			50		50/0.3ft		Silty SANDSTONE, continued.		7						
35 4697.1			50		50/0.3ft			7							Installed VW piezometer at 35.0 ft.
40 4692.1								40.0 4692.1							

Boring Depth: 40.0 ft, Elevation: 4692.1 ft

Water Level Observations		<input type="checkbox"/> During Drilling: Not Encountered <input checked="" type="checkbox"/> After Drilling: Not Encountered +0.5 hrs. Augers Out	Remarks: Borehole caved at 37.0 ft., After Drilling, Augers Out
<input checked="" type="checkbox"/> End of Drilling: Not Encountered, Augers In			

(2) MDT LOG OF BORING - MDT, 2016+WELL, V1, GDT - 2/23/22 12:57 - G:\PROJECTS\2018+PROJECTS\9970000.GPJ



LOG OF BORING

Boring 9970000-5

Sheet 1 of 2

Project: Slide Repair - W of Bearcreek				Rig: CME 850		Boring Location N: 330917.9 ft				Station: 235 + 78		
				Hammer: Auto		Coordinates E: 2051795 ft				Offset: 298 ft R		
Project Number: STPS 308-1(36)6			UPN: 9970000		Boring Diameter: 8"		System: MT S.P. (E)				Ground Elevation: 4800.9 ft	
Date Started: 9/29/21			Date Finished: 9/29/21		Drilling Fluid: None		Location Source: Surveyed				Elevation Source: Surveyed	
Driller: Duncan			Notes:				PLS TRS-QQ: 8S 21E 6 - DA					
Logger: Kettner							Abandonment: Cuttings					

Depth (ft)	Operation	Sample Type	Recovery (%)	RQD (%)	Blow Count	Lithology	Material Description	Depth (ft)	MC (%)	LL	PL	-200 (%)	Qu (psi)	DD (pcf)	Remarks and Other Tests
5 4795.9							Poorly-Graded GRAVEL with silt and sand (GP-GM), dense, dry to moist, tan to brown, fine to coarse grained, angular to subangular, [A-1]. Increase in sand with depth. Gravel consists of sandy siltstone and silty sandstone clasts.								Hollow stem augers with finger bit.
10 4790.9			100		18 - 24 - 11				7						Installed 34.2 ft. of SI casing below existing ground. 3.5 ft. of casing stickup. Grouted annulus. Monument cover at existing ground.
15 4785.9			100		19 - 35 - 26		Sandy SILTSTONE, tan to gray, very soft to soft field hardness. Poorly cemented.	14.5 4786.4	8						
			75		6 - 12 - 9		COAL, black.	17.4 4783.5							
20 4780.9			50		9 - 11 - 14			20.4 4780.5	55						
			75		13 - 16 - 24		CLAYSTONE, gray to black, very soft to soft field hardness. Interbedded with shale. Frequent iron oxide stained sand healed fractures.		13	45	26	73			
			100		14 - 25 - 33				17						
			100		50/0.4ft				12						
25 4775.9			100		50/0.2ft		Sandy SILTSTONE, gray to tan, very soft to soft field hardness. Interbedded with shale. Occasional evaporite crystals.	23.7 4777.2	16						
									5						

Water Level Observations			<input checked="" type="checkbox"/> During Drilling: Not Encountered <input type="checkbox"/> After Drilling: Not Encountered +0.5 hrs. Augers Out		Remarks: Borehole caved at 32.7 ft., After Drilling, Augers Out
<input checked="" type="checkbox"/> End of Drilling: Not Encountered, Augers In					

(2) MDT LOG OF BORING - MDT, 2016+WELL, V1, GDT - 2/23/22 12:57 - G:\PROJECTS\2018-PROJECTS\9970000.GPJ



LOG OF BORING

Boring 9970000-5

Sheet 2 of 2

Project: Slide Repair - W of Bearcreek				Rig: CME 850		Boring Location N: 330917.9 ft				Station: 235 + 78		
				Hammer: Auto		Coordinates E: 2051795 ft				Offset: 298 ft R		
Project Number: STPS 308-1(36)6			UPN: 9970000		Boring Diameter: 8"		System: MT S.P. (E)				Ground Elevation: 4800.9 ft	
Date Started: 9/29/21			Date Finished: 9/29/21		Drilling Fluid: None		Location Source: Surveyed				Elevation Source: Surveyed	
Driller: Duncan			Notes:						PLS TRS-QQ: 8S 21E 6 - DA			
Logger: Kettner									Abandonment: Cuttings			

Depth (ft) Elev. (ft)	Operation	Sample Type	Recovery (%)	RQD (%)	Blow Count	Lithology	Material Description	Depth (ft) Elev. (ft)	MC (%)	LL	PL	-200 (%)	Qu (psi)	DD (pcf)	Remarks and Other Tests
30 4770.9			100		32 - 23 - 25		Sandy SILTSTONE, continued.	28.8	8						
			100		50/0.2ft		11								
			100		26 - 49 - 50/0.4ft		11								
			100		50/0.2ft		6								
35 4765.9			100		50/0.2ft		35.2								

Boring Depth: 35.2 ft, Elevation: 4765.7 ft

Water Level Observations		<input type="checkbox"/> During Drilling: Not Encountered <input type="checkbox"/> After Drilling: Not Encountered +0.5 hrs. Augers Out	Remarks: Borehole caved at 32.7 ft., After Drilling, Augers Out
<input checked="" type="checkbox"/> End of Drilling: Not Encountered, Augers In			

(2) MDT LOG OF BORING - MDT, 2016+WELL, V1, GDT - 2/23/22 12:57 - G:\PROJECTS\2018+PROJECTS\9970000.GPJ



LOG OF BORING

Boring 9970000-6

Sheet 1 of 2

Project: Slide Repair - W of Bearcreek				Rig: CME 850		Boring Location N: 330938.6 ft				Station: 234 + 88		
				Hammer: Auto		Coordinates E: 2051699 ft				Offset: 258 ft R		
Project Number: STPS 308-1(36)6			UPN: 9970000		Boring Diameter: 8"		System: MT S.P. (E)				Ground Elevation: 4797.4 ft	
Date Started: 9/28/21			Date Finished: 9/28/21		Drilling Fluid: None		Location Source: Surveyed				Elevation Source: Surveyed	
Driller: Duncan			Notes:				PLS TRS-QQ: 8S 21E 6 - DA					
Logger: Kettner							Abandonment: Cuttings					

Depth (ft) Elev. (ft)	Operation	Sample Type	Recovery (%)	RQD (%)	Blow Count	Lithology	Material Description	Depth (ft) Elev. (ft)	MC (%)	LL	PL	-200 (%)	Qu (psi)	DD (pcf)	Remarks and Other Tests
5 4792.4			75		25 - 8 - 8		Poorly-Graded GRAVEL with silt and sand (GP-GM), dense to very dense, dry to moist, tan to brown, fine to coarse grained, angular to subangular, [A-1]. Increase in sand with depth. Gravel consists of sandy siltstone and silty sandstone clasts.	5							Hollow stem augers with finger bit.
			100		34 - 50/0.2ft		Frequent cobbles.	5							
			100		50/0.2ft			5							
10 4787.4			100		50/0.3ft			6							
			100		50/0.3ft			6							
15 4782.4			75		8 - 12 - 12		Sandy SILTSTONE, tan to gray, very soft to soft field hardness. Occasional shale layers. Poorly cemented.	17.5 4779.9							
20 4777.4							COAL, black.	21.3 4776.1							
25 4772.4			75		8 - 19 - 36		CLAYSTONE, gray, very soft to soft field hardness. Interbedded shale. Frequent iron oxide stained sand healed fractures.	23.9 4773.5	15	40	24				

Water Level Observations		<input type="checkbox"/> During Drilling: Not Encountered <input type="checkbox"/> After Drilling: Not Encountered +0.5 hrs. Augers Out	Remarks: Borehole caved at 21.0 ft., After Drilling, Augers Out
<input checked="" type="checkbox"/> End of Drilling: Not Encountered, Augers In			

(2) MDT LOG OF BORING - MDT, 2016+WELL, V1, GDT - 2/23/22 12:57 - G:\PROJECTS\2018+PROJECTS\9970000.GPJ



LOG OF BORING

Boring 9970000-6

Sheet 2 of 2

Project: Slide Repair - W of Bearcreek				Rig: CME 850		Boring Location N: 330938.6 ft				Station: 234 + 88			
				Hammer: Auto		Coordinates E: 2051699 ft				Offset: 258 ft R			
Project Number: STPS 308-1(36)6				UPN: 9970000		Boring Diameter: 8"				System: MT S.P. (E)			
						Datum: NAD83				Ground Elevation: 4797.4 ft			
Date Started: 9/28/21				Date Finished: 9/28/21		Drilling Fluid: None				Location Source: Surveyed			
										Elevation Source: Surveyed			
Driller: Duncan				Notes:						PLS TRS-QQ: 8S 21E 6 - DA			
Logger: Kettner										Abandonment: Cuttings			

Depth (ft)	Operation	Sample Type	Recovery (%)	RQD (%)	Blow Count	Lithology	Material Description	Depth (ft)	MC (%)	LL	PL	-200 (%)	Qu (psi)	DD (pcf)	Remarks and Other Tests
Elev. (ft)								Elev. (ft)							
30			100		36 - 43 - 50/0.3ft		Silty SANDSTONE, gray to tan, fine grained, very soft to moderately hard field hardness.	27.0	2	9					
4767.4							4770.4								
							SILTSTONE, gray to tan, very soft to moderately hard field hardness. Occasional shale layer and iron oxide stained sand seams.	29.3							
								4768.1							
								30.3							
								4767.1							

Boring Depth: 30.3 ft, Elevation: 4767.1 ft

Water Level Observations		During Drilling: Not Encountered After Drilling: Not Encountered +0.5 hrs. Augers Out	Remarks: Borehole caved at 21.0 ft., After Drilling, Augers Out
End of Drilling: Not Encountered, Augers In			

(2) MDT LOG OF BORING - MDT, 2016+WELL, V1, GDT - 2/23/22 12:57 - G:\PROJECTS\2018+PROJECTS\9970000.GPJ



LOG OF BORING

Boring 9970000-7

Sheet 1 of 2

Project: Slide Repair - W of Bearcreek				Rig: CME 850		Boring Location N: 330933.9 ft				Station: 236 + 93		
				Hammer: Auto		Coordinates E: 2051909 ft				Offset: 306 ft R		
Project Number: STPS 308-1(36)6			UPN: 9970000		Boring Diameter: 8"		System: MT S.P. (E)				Ground Elevation: 4802.1 ft	
Date Started: 9/28/21			Date Finished: 9/28/21		Drilling Fluid: None		Location Source: Surveyed				Elevation Source: Surveyed	
Driller: Duncan			Notes:				PLS TRS-QQ: 8S 21E 6 - DA					
Logger: Kettner							Abandonment: Cuttings					

Depth (ft) Elev. (ft)	Operation	Sample Type	Recovery (%)	RQD (%)	Blow Count	Lithology	Material Description	Depth (ft) Elev. (ft)	MC (%)	LL	PL	-200 (%)	Qu (psi)	DD (pcf)	Remarks and Other Tests
5 4797.1			75		14 - 26 - 7		Poorly-Graded GRAVEL with silt and sand (GP-GM), medium dense to dense, dry to moist, tan to brown, fine to coarse grained, angular to subangular, [A-1]. Increase in sand with depth. Gravel consists of sandy siltstone and silty sandstone clasts.		2						Hollow stem augers with finger bit.
			50		5 - 14 - 10				5						
10 4792.1			100		8 - 7 - 6				7						
			100		14 - 26 - 20				7						
15 4787.1			100		13 - 10 - 4		Sandy SILTSTONE, tan to gray, very soft to soft field hardness. Poorly cemented.	14.2 4787.9	9						
			25		2 - 4 - 3		COAL, black.	16.7 4785.4	11						
20 4782.1			75		5 - 7 - 11		Sandy SILTSTONE, tan to gray, very soft to soft field hardness. Poorly cemented.	19.5 4782.6	12	30	17				
			50		6 - 13 - 26			16							
25 4777.1			100		24 - 32 - 50/0.4ft		CLAYSTONE, gray, very soft to soft field hardness. Interbedded shale. Frequent iron oxide stained sand healed fractures. Silty SANDSTONE, gray to tan, fine grained, very soft to moderately hard field hardness. Iron oxide staining.	23.5 4778.6 24.5 4777.6	7 6						

Water Level Observations			<input type="checkbox"/> During Drilling: Not Encountered		Remarks: Borehole caved at 22.7 ft., After Drilling, Augers Out
<input checked="" type="checkbox"/> End of Drilling: Not Encountered, Augers In			<input checked="" type="checkbox"/> After Drilling: Not Encountered +0.5 hrs. Augers Out		

(2) MDT LOG OF BORING - MDT, 2016+WELL, V1, GDT - 2/23/22 12:57 - G:\PROJECTS\2018-PROJECTS\9970000.GPJ



LOG OF BORING

Boring 9970000-7

Sheet 2 of 2

Project: Slide Repair - W of Bearcreek				Rig: CME 850		Boring Location N: 330933.9 ft				Station: 236 + 93			
				Hammer: Auto		Coordinates E: 2051909 ft				Offset: 306 ft R			
Project Number: STPS 308-1(36)6				UPN: 9970000		Boring Diameter: 8"				System: MT S.P. (E)			
						Datum: NAD83				Ground Elevation: 4802.1 ft			
Date Started: 9/28/21				Date Finished: 9/28/21		Drilling Fluid: None				Location Source: Surveyed			
										Elevation Source: Surveyed			
Driller: Duncan				Notes:						PLS TRS-QQ: 8S 21E 6 - DA			
Logger: Kettner										Abandonment: Cuttings			

Depth (ft)	Operation	Sample Type	Recovery (%)	RQD (%)	Blow Count	Lithology	Material Description	Depth (ft)	MC (%)	LL	PL	-200 (%)	Qu (psi)	DD (pcf)	Remarks and Other Tests			
30			100		6 - 21 - 17		Silty SANDSTONE, continued.	29.5	7									
Elev. (ft)																		
4772.1																		
							Sandy SILTSTONE, tan to gray, very soft to hard field hardness. Interbedded with silty sandstone.	31.5										
Boring Depth: 31.5 ft, Elevation: 4770.6 ft								4770.6										

Water Level Observations		<input type="checkbox"/> During Drilling: Not Encountered <input type="checkbox"/> After Drilling: Not Encountered +0.5 hrs. Augers Out	Remarks: Borehole caved at 22.7 ft., After Drilling, Augers Out
<input checked="" type="checkbox"/> End of Drilling: Not Encountered, Augers In			

(2) MDT LOG OF BORING - MDT, 2016+WELL, V1, GDT - 2/23/22 12:57 - G:\PROJECTS\2018+PROJECTS\9970000.GPJ



LOG OF BORING

Boring 9970000-8

Sheet 1 of 2

Project: Slide Repair - W of Bearcreek				Rig: CME 850		Boring Location N: 331113.4 ft				Station: 236 + 96		
				Hammer: Auto		Coordinates E: 2051874 ft				Offset: 123 ft R		
Project Number: STPS 308-1(36)6			UPN: 9970000		Boring Diameter: 8"		System: MT S.P. (E)				Ground Elevation: 4730.9 ft	
Date Started: 9/21/21			Date Finished: 9/22/21		Drilling Fluid: None		Location Source: Surveyed				Elevation Source: Surveyed	
Driller: Duncan			Notes:				PLS TRS-QQ: 8S 21E 6 - DA					
Logger: Kluth							Abandonment: Cuttings					

Depth (ft)	Operation	Sample Type	Recovery (%)	RQD (%)	Blow Count	Lithology	Material Description	Depth (ft)	MC (%)	LL	PL	-200 (%)	Qu (psi)	DD (pcf)	Remarks and Other Tests
5							Sandy Lean CLAY with gravel (CL), medium stiff, moist, brown to tan, [A-4]. Frequent thin seams of silt.								Hollow stem augers with finger bit.
4725.9			50		3 - 3 - 4				16						Installed 36.7 ft. of SI casing below existing ground. 2.5 ft. of casing stickup. Grouted annulus. Monument cover at existing ground.
10			50		2 - 2 - 4				16						
4720.9								12.0							
			75		2 - 3 - 4		Lean CLAY with sand (CL), medium stiff, moist, brown, [A-6].	4718.9	17						
15			50		2 - 4 - 4				10						
4715.9			75		4 - 2 - 3		Silty SAND with gravel (SM), loose, moist, brown to tan, [A-4]. Seams and interbedded layers (<0.5 ft.) of clayey sand. Iron-oxide staining.	16.5							
			75		4 - 2 - 3			4714.4	14						
20			50		3 - 3 - 3				16						
4710.9			25		10 - 4 - 3		Wet. Frequent sandstone clasts.		13		NP	42			
			75		2 - 10 - 22				14						
25			100		16 - 50/0.5ft		CLAYSTONE, gray, very soft to soft field hardness. Interbedded layers (<1.0 ft.) of sandy siltstone.	23.1		31	20		74		
4705.9			100		14 - 50/0.3ft			4707.8	15	46	27				
							Sandy SHALE, gray, soft to medium field hardness.	26.2							
								4704.7	6						
							Sandy SILTSTONE, gray, soft to medium field hardness.	28.1							
								4702.8							
30															
4700.9															

Water Level Observations		During Drilling: 21.0 ft (4709.9 ft)	Remarks: Borehole caved at 36.7 ft., After Drilling, Augers Out
End of Drilling: Not Encountered. Augers In		After Drilling: Not Encountered +0.5 hrs. Augers Out	

(2) MDT LOG OF BORING - MDT, 2016+WELL, V1, GDT - 2/23/22 12:57 - G:\PROJECTS\2018+PROJECTS\9970000.GPJ



LOG OF BORING

Boring 9970000-8

Sheet 2 of 2

Project: Slide Repair - W of Bearcreek				Rig: CME 850		Boring Location N: 331113.4 ft				Station: 236 + 96			
				Hammer: Auto		Coordinates E: 2051874 ft				Offset: 123 ft R			
Project Number: STPS 308-1(36)6				UPN: 9970000		Boring Diameter: 8"				System: MT S.P. (E)			
						Datum: NAD83				Ground Elevation: 4730.9 ft			
Date Started: 9/21/21				Date Finished: 9/22/21		Drilling Fluid: None				Location Source: Surveyed			
										Elevation Source: Surveyed			
Driller: Duncan				Notes:						PLS TRS-QQ: 8S 21E 6 - DA			
Logger: Kluth										Abandonment: Cuttings			

Depth (ft) Elev. (ft)	Operation	Sample Type	Recovery (%)	RQD (%)	Blow Count	Lithology	Material Description	Depth (ft) Elev. (ft)	MC (%)	LL	PL	-200 (%)	Qu (psi)	DD (pcf)	Remarks and Other Tests
			25		50/0.2ft		Sandy SILTSTONE, continued.		5						
35 4695.9								32.6 4698.3							
			100		49 - 50/0.3ft		Sandy SHALE, gray, soft to medium field hardness. Interbedded seams and layers (<0.5 ft.) of coal.	7							
40 4690.9															
			100		12 - 38 - 45			12							
								41.5 4689.4							

Boring Depth: 41.5 ft, Elevation: 4689.4 ft

Water Level Observations		<input type="checkbox"/> During Drilling: 21.0 ft (4709.9 ft)	Remarks: Borehole caved at 36.7 ft., After Drilling, Augers Out
<input checked="" type="checkbox"/> End of Drilling: Not Encountered, Augers In	<input checked="" type="checkbox"/> After Drilling: Not Encountered +0.5 hrs. Augers Out		

(2) MDT LOG OF BORING - MDT, 2016+WELL, V1, GDT - 2/23/22 12:57 - G:\PROJECTS\2018+PROJECTS\9970000.GPJ



LOG OF BORING

Boring 9970000-9

Sheet 1 of 2

Project: Slide Repair - W of Bearcreek				Rig: CME 850		Boring Location N: 331143.6 ft				Station: 236 + 70		
				Hammer: Auto		Coordinates E: 2051842 ft				Offset: 87 ft R		
Project Number: STPS 308-1(36)6			UPN: 9970000		Boring Diameter: 8"		System: MT S.P. (E)				Ground Elevation: 4729.1 ft	
Date Started: 9/22/21			Date Finished: 9/23/21		Drilling Fluid: None		Location Source: Surveyed				Elevation Source: Surveyed	
Driller: Duncan			Notes:				PLS TRS-QQ: 8S 21E 6 - DA					
Logger: Kluth							Abandonment: Cuttings					

Depth (ft)	Operation	Sample Type	Recovery (%)	RQD (%)	Blow Count	Lithology	Material Description	Depth (ft)	MC (%)	LL	PL	-200 (%)	Qu (psi)	DD (pcf)	Remarks and Other Tests
Elev. (ft)								Elev. (ft)							
5 4724.1							Lean CLAY with sand (CL), medium stiff to stiff, moist, brown, [A-6].								Hollow stem augers with finger bit.
10 4719.1		X	75		3 - 3 - 4				14						Installed 43.9 ft. of SI casing below existing ground. 3.0 ft. of casing stickup. Grouted annulus. Monument cover at existing ground.
15 4714.1		X	100		3 - 3 - 7			15.1 4714.0	14						
		X	75		4 - 4 - 5		Sandy Lean CLAY (CL), stiff to medium stiff, moist, brown to tan, [A-4]. Seams and interbedded layers (<0.5 ft.) of silty sand. Occasional sandstone gravel clasts.		9						
20 4709.1		X	50		5 - 2 - 3				13						
		X	50		3 - 2 - 3				17						
25 4704.1		X	50		2 - 3 - 4		Silty SAND with gravel (SM), loose, moist, tan to brown, fine to coarse grained, angular to subangular, [A-4]. Seams and interbedded layers (<0.5 ft.) of clayey sand. Frequent sandstone gravel clasts.	24.0 4705.1	10						
		X	50		1 - 3 - 5		CLAYSTONE, brown to gray, very soft field hardness.	27.1 4702.0	18						
		X	100		3 - 5 - 5			28.6 4700.5	15						
30 4699.1		X	75		8 - 9 - 14		Silty SANDSTONE, tan to brown, coarse grained, very soft to medium field hardness. Interbedded layers (<1.0 ft.) of sandy shale.		8						

Water Level Observations			<input type="checkbox"/> During Drilling: Not Encountered <input checked="" type="checkbox"/> After Drilling: Not Encountered +0.5 hrs. Augers Out		Remarks: Borehole remained open, After Drilling, Augers Out
<input checked="" type="checkbox"/> End of Drilling: Not Encountered, Augers In					

(2) MDT LOG OF BORING - MDT, 2016+WELL, V1, GDT - 2/23/22 12:58 - G:\PROJECTS\2018+PROJECTS\9970000.GPJ

LOG OF BORING

Boring 9970000-9

Sheet 2 of 2

[illegible]



LOG OF BORING

Boring 9970000-10

Sheet 1 of 2

Project: Slide Repair - W of Bearcreek				Rig: CME 850		Boring Location N: 331167.9 ft				Station: 236 + 75		
				Hammer: Auto		Coordinates E: 2051842 ft				Offset: 63 ft R		
Project Number: STPS 308-1(36)6			UPN: 9970000		Boring Diameter: 8"		System: MT S.P. (E)				Ground Elevation: 4720.3 ft	
Date Started: 9/23/21			Date Finished: 9/23/21		Drilling Fluid: None		Location Source: Surveyed				Elevation Source: Surveyed	
Driller: Duncan			Notes:				PLS TRS-QQ: 8S 21E 6 - DA					
Logger: Kluth							Abandonment: Cuttings					

Depth (ft) Elev. (ft)	Operation	Sample Type	Recovery (%)	RQD (%)	Blow Count	Lithology	Material Description	Depth (ft) Elev. (ft)	MC (%)	LL	PL	-200 (%)	Qu (psi)	DD (pcf)	Remarks and Other Tests	
5 4715.3							Sandy Lean CLAY (CL), medium stiff, moist, brown, [A-4]. Seams and interbedded layers (< 0.5 ft.) of silty sand.									Hollow stem augers with finger bit.
10 4710.3			75		3 - 3 - 3											
15 4705.3			75		3 - 2 - 3											
			75		2 - 3 - 3											
20 4700.3			75		7 - 7 - 4		Silty GRAVEL with sand (GM), medium dense, moist, tan to brown, fine to coarse grained, angular to subangular, [A-4].	19.5 4700.8								
			100		21 - 22 - 12		CLAYSTONE, brown to gray, very soft to soft field hardness.	21.1 4699.2								
			75		6 - 7 - 8		Silty SANDSTONE, tan to rust-colored, coarse grained, very soft to medium field hardness.	21.6 4698.7								
25 4695.3			100		4 - 9 - 12		Sandy SHALE, brown to gray, very soft to soft field hardness.	23.9 4696.4								
			75		7 - 11 - 5		Silty SANDSTONE, tan to rust-colored, coarse grained, very soft to medium field hardness.	26.6 4693.7								
			75		3 - 3 - 5		SHALE, dark brown to gray, very soft to soft field hardness.	28.6 4691.7								
30 4690.3			50		6 - 11 - 15											

Water Level Observations			<input type="checkbox"/> During Drilling: Not Encountered <input checked="" type="checkbox"/> After Drilling: Not Encountered +0.5 hrs. Augers Out		Remarks: Borehole remained open, After Drilling, Augers Out
<input checked="" type="checkbox"/> End of Drilling: Not Encountered, Augers In					

(2) MDT LOG OF BORING - MDT, 2016+WELL, V1, GDT - 2/23/22 12:58 - G:\PROJECTS\2018+PROJECTS\9970000.GPJ



LOG OF BORING

Boring 9970000-10

Sheet 2 of 2

Project: Slide Repair - W of Bearcreek				Rig: CME 850		Boring Location N: 331167.9 ft				Station: 236 + 75		
				Hammer: Auto		Coordinates E: 2051842 ft				Offset: 63 ft R		
Project Number: STPS 308-1(36)6			UPN: 9970000		Boring Diameter: 8"		System: MT S.P. (E)				Ground Elevation: 4720.3 ft	
Date Started: 9/23/21			Date Finished: 9/23/21		Drilling Fluid: None		Location Source: Surveyed				Elevation Source: Surveyed	
Driller: Duncan			Notes:						PLS TRS-QQ: 8S 21E 6 - DA			
Logger: Kluth									Abandonment: Cuttings			

Depth (ft)	Operation	Sample Type	Recovery (%)	RQD (%)	Blow Count	Lithology	Material Description	Depth (ft)	MC (%)	LL	PL	-200 (%)	Qu (psi)	DD (pcf)	Remarks and Other Tests
							SHALE, continued.								
			100		8 - 50/0.5ft			33.1	8						
							SILTSTONE, tan to rust-colored, soft to medium field hardness.	4687.2							
							Boring Depth: 33.5 ft, Elevation: 4686.8 ft	33.5							
								4686.8							

Water Level Observations		<input type="checkbox"/> During Drilling: Not Encountered <input type="checkbox"/> After Drilling: Not Encountered +0.5 hrs. Augers Out	Remarks: Borehole remained open, After Drilling, Augers Out
<input type="checkbox"/> End of Drilling: Not Encountered, Augers In			

(2) MDT LOG OF BORING - MDT, 2016+WELL, V1, GDT - 2/23/22 12:58 - G:\PROJECTS\2018+PROJECTS\9970000.GPJ

STANDARD PROVISIONS INDEX**FEDERAL AID PROJECTS****CONTAINS**

Federal Wage Rates (Rev. 1-16-2026)

5 Pages

Requirements & Acknowledgement for Working on Railroad R/W

1 Page

Required Contract Provisions Federal-Aid Const. Contracts
(FORM FHWA-1273) [Rev.10-23-2023]

14 Pages

Supplemental Revisions for Required Contract Provisions Federal-Aid Const.
Contracts (FORM FHWA-1273) [Added 2-4-2016]

1 Page

EEO Affirmative Action Req. on Federal-Aid Construction

1 Page

"General Decision Number: MT20260080 01302026

State: Montana

Construction Type: Highway

Counties: Montana Statewide.

HIGHWAY CONSTRUCTION PROJECTS

Modification Number
0

Publication Date
1/16/2026

SAMT2025-001 01/11/2025

	<u>Rates</u>	<u>Fringes</u>
CARPENTER		
Carpenter	\$ 37.13	14.66
Millwright	\$ 42.10	15.14
CEMENT MASON/CONCRETE FINISHER	\$ 34.41	17.00
DIVER		
Diver Tender	\$ 46.66	18.93
Diving	\$ 95.44	18.93
Standy-By.	\$ 47.72	18.93

The Tender shall receive 2 hours at the straight time pay rate per shift for dressing and/or undressing when work is done under hyperbaric conditions.

Depth Pay (Surface Diving):

0-20 ft.: Free zone
 >20-100 ft.: \$2.00 per ft.
 >100-150 ft.: \$3.00 per ft.
 >150-220 ft.: \$4.00 per ft.
 >220 ft.: \$5.00 per ft.

Diving in Enclosures (Diver Only):

0-25 ft.: Free zone
 >25-300 ft.: \$1.00 per ft.

ELECTRICIAN	\$ 40.25	20.60
IRONWORKER		
Reinforcing Iron and Rebar Workers	\$ 34.83	25.37
Structural Iron and Steel Workers	\$ 34.83	25.37
LABORER		
Group 1.....	\$ 28.54	12.73
Group 2.....	\$ 31.80	12.73
Group 3.....	\$ 32.03	12.73
Group 4.....	\$ 33.08	12.73

GROUP 1: Flag Person for Traffic Control

GROUP 2: General Labor; Asbestos Removal; Burning Bar; Bucket Man; Carpenter Tender; Caisson Worker; Cement Mason Tender; Cement Handler (dry); Chuck Tender; Choker Setter; Concrete Worker; Curb Machine-Lay Down; Crusher and Batch Worker; Heater Tender; Fence Erector; Landscape Laborer; Landscaper; Lawn Sprinkler Installer; Pipe Wrapper; Pot Tender; Powderman Tender; Rail and Truck Loaders and Unloaders; Ripraper; Sign Erection; Guardrail and Jersey Rail; Spike Driver; Stake Jumper; Signalman; Tail Hoseman; Tool Checker and Houseman and Traffic Control Worker

GROUP 3: Concrete Vibrator; Dumpman (Grademan); Equipment Handler; Geotextile and Liners; High-Pressure Nozzleman; Jackhammer (Pavement Breaker) Non-Riding Rollers; Pipelayer; Posthole Digger (power); Power Driven Wheelbarrow; Rigger; Sandblaster; Sod-Cutter-power and Tampers

GROUP 4: Hod Carrier; Water Well Laborer; Blaster; Wagon Driller; Asphalt Raker; Cutting Torch; Grade Setter; High- Scaler; Power Saws (Faller & Concrete); Powderman; Rock & Core Drill; Track or Truck Mounted Wagon Drill and Welder incl. Air Arc

LINE CONSTRUCTION

Equipment Operator.....	\$ 39.53	19.16
Groundman.....	\$ 30.86	18.17
Lineman.....	\$ 51.61	20.48

PAINTER..... \$ 37.08 13.23

PILE BUCKS..... \$ 36.49 14.33

POWER EQUIPMENT OPERATOR:

Group 1.....	\$ 33.44	13.15
Group 2.....	\$ 35.59	13.15
Group 3.....	\$ 36.77	13.15
Group 4.....	\$ 37.77	13.15
Group 5.....	\$ 39.17	13.15
Group 6.....	\$ 40.45	13.15
Group 7.....	\$ 43.21	13.15

GROUP 1: Air Compressor; Auto Fine Graders; Belt Finishing; Boring Machine (small); Cement Silo; Crane, A-Frame Truck Crane; Crusher Conveyor; DW-10, 15, and 20 Tractor Roller; Farm Tractor; Forklift; Form Grader; Front End Loader Under 1 CU Yard; Heavy Duty Drills; Herman Nelson Heater; Mulching Machine; Oiler, All Except Cranes & Shovels; Pumpman

GROUP 2: Air Doctor; Backhoe/Excavator/Shovel up to and including 3 CU Yard; Bit Grinder; Bituminous Paving Travel Plant; Boring Machine Large; Broom, Self-Propelled; Concrete Travel Batch; Concrete Float & Spreader; Concrete Bucket Dispatcher; Concrete Finish Machine; Concrete Conveyor; Distributor; Dozer; Rubber-Tired, Push & Side Boom; Elevating Grader/Gradall; Field Equipment Serviceman; Front End Loader 1 CU Yard to including 5 CU Yard; Grade Setter; Heavy Duty Drills, All Types; Hoist/Tugger, All; Hydra lift Forklifts & Similar; Industrial Locomotive; Motor Patrol (except finish); Mountain Skidder; Oiler, Cranes/Shovels; Pavement Breaker, EMSCO; Power Saw, Self-Propelled; Pugmill; Pumpcrete/Grout Machine; Punch Truck; Roller, Other Than Asphalt; Roller, Sheepsfoot (Self-Propelled); Roller, 25 Tons and Over; Ross Carrier; Rotomill Under 6 Ft; Trenching Machine; Washing/Screening Plant

GROUP 3: Asphalt Paving Machine; Asphalt Screed; Backhoe/Excavator/Shovel Over 3 CU Yard; Cableway Highline; Concrete Batch Plant; Concrete Curing Machine; Concrete Pump; Cranes; Creter; Cranes, Electric

Overhead; Cranes 24 Tons and Under; Curb Machine/Slip Form Paver; Finish Dozer; Front End Loader Over 5 CU Yard; Mechanic/Welder; Pioneer Dozer; Roller Asphalt (Breakdown & Finish); Rotomill, Over 6 FT; Scraper, Single, Twin or Pulling Belly Dump; Yo-Yo Cat Haul Truck, Articulating Trucks, Vac Truck

GROUP 4: Asphalt/Hot Plant Operator, Cranes, 25 Tons up to and incl. 44 Tons; Crusher Operator; Finish Motor Patrol; Finish Scraper

GROUP 5: Cranes, 45 Tons up to and incl. 74 Tons

GROUP 6: Cranes, 75 Tons up to and incl. 149 Tons; Crane, Whirley (All)

GROUP 7: Cranes, 150 Tons up to and incl. 250 Tons; Cranes, over 250 tons-add \$1.00 for every 100 tons over 250 tons; Crane, Tower (All); Crane Stiff-Leg or Derrick; Helicopter Hoist

TRUCK DRIVER

Group 1.....	\$ 29.06	12.95
Group 2.....	\$ 36.81	12.95

GROUP 1: Pilot Car

GROUP 2: Combination Truck and Concrete Mixer and Transit Mixer; Dry Batch Trucks; Distributor Driver; Dumpman; Dump Trucks and Similar Equipment; Dumpster; Flat Trucks; Lumber Carriers; Lowboys; Pickup; Powder Truck Driver; Power Boom; Serviceman; Service Truck/Fuel Truck/Tireperson; Truck Mechanic; Trucks with Power Equipment; Warehouseman, Partsman, Cardex and Warehouse Expeditor; Water Trucks

WELDERS - Receive rate prescribed for craft performing operation to which welding is incidental.

=====

Note: Executive Order (EO) 13706, Establishing Paid Sick Leave for Federal Contractors, applies to all contracts subject to the Davis-Bacon Act for which the contract is awarded (and any solicitation was issued) on or after January 1, 2017. If this contract is covered by the EO, the contractor must provide employees with 1 hour of paid sick leave for every 30 hours they work, up to 56 hours of paid sick leave each year. Employees must be permitted to use paid sick leave for their own illness, injury or other health-related needs, including preventive care; to assist a family member (or person who is like family to the employee) who is ill, injured, or has other health-related needs, including preventive care; or for reasons resulting from, or to assist a family member (or person who is like family to the employee) who is a victim of, domestic violence, sexual assault, or stalking. Additional information on contractor requirements and worker protections under the EO is available at: <https://www.dol.gov/agencies/whd/government-contracts> .

Note: Executive Order 13658 generally applies to contracts subject to the Davis-Bacon Act that were awarded on or between January 1, 2015 and January 29, 2022, and that have not been renewed or extended on or after January 30, 2022. Executive Order 13658 does not apply to contracts subject only to the Davis-Bacon Related Acts regardless of when they were awarded.

If a contract is subject to Executive Order 13658, the contractor must pay all covered workers at least \$13.30 per hour (or the applicable wage rate listed on this wage determination, if it is higher) for all hours spent performing on the contract in 2025. The applicable Executive Order minimum wage rate will be adjusted annually. Additional information on contractor requirements and worker protections under Executive Order 13658 is available at www.dol.gov/whd/govcontracts .

Unlisted classifications needed for work not included within the scope of the classifications listed may be added after award only as provided in the labor standards contract clauses (29CFR 5.5 (a) (1) (iii)).

The body of each wage determination lists the classifications and wage rates that have been found to be prevailing for the type(s) of construction and geographic area covered by the wage determination. The classifications are listed in alphabetical order under rate identifiers indicating whether the particular rate is a union rate (current union negotiated rate), a survey rate, a weighted union average rate, a state adopted rate, or a supplemental classification rate.

Union Rate Identifiers

A four-letter identifier beginning with characters other than ""SU"", ""UAVG"", "SA", or "SC" denotes that a union rate was prevailing for that classification in the survey. Example: PLUM0198-005 07/01/2024. PLUM is an identifier of the union whose collectively bargained rate prevailed in the survey for this classification, which in this example would be Plumbers. 0198 indicates the local union number or district council number where applicable, i.e., Plumbers Local 0198. The next number, 005 in the example, is an internal number used in processing the wage determination. The date, 07/01/2024 in the example, is the effective date of the most current negotiated rate.

Union prevailing wage rates are updated to reflect all changes over time that are reported to WHD in the rates in the collective bargaining agreement (CBA) governing the classification.

Union Average Rate Identifiers

The UAVG identifier indicates that no single rate prevailed for those classifications, but that 100% of the data reported for the classifications reflected union rates. EXAMPLE: UAVG-OH-0010 01/01/2024. UAVG indicates that the rate is a weighted union average rate. OH indicates the State of Ohio. The next number, 0010 in the example, is an internal number used in producing the wage determination. The date, 01/01/2024 in the example, indicates the date the wage determination was updated to reflect the most current union average rate.

A UAVG rate will be updated once a year, usually in January, to reflect a weighted average of the current rates in the collective bargaining agreements on which the rate is based.

Survey Rate Identifiers

The ""SU"" identifier indicates that either a single non-union rate prevailed (as defined in 29 CFR 1.2) for this classification in the survey or that the rate was derived by computing a weighted average rate based on all the rates reported in the survey for that classification. As a weighted average rate includes all rates reported in the survey, it may include both union and non-union rates. Example: SUFL2022-007 6/27/2024. SU indicates the rate is a single non-union prevailing rate or a weighted average of survey data for that classification. FL indicates the State of Florida. 2022 is the year of the survey on which these classifications and rates are based. The next number, 007 in the example, is an internal number used in producing the wage determination. The date, 6/27/2024 in the example, indicates the survey completion date for the classifications and rates under that identifier. "SU" wage rates typically remain in effect until a new survey is conducted. However, the Wage and Hour Division (WHD) has the discretion to update such rates under 29 CFR 1.6(c)(1).

State Adopted Rate Identifiers

The ""SA"" identifier indicates that the classifications and prevailing wage rates set by a state (or local) government were adopted under 29 C.F.R 1.3(g)-(h). Example: SAME2023-007 01/03/2024. SA reflects that the rates are state adopted. ME refers to the State of Maine. 2023 is the year during which the state completed the survey on which the listed classifications and rates are based. The next number, 007 in the example, is an internal number used in producing the wage determination. The date, 01/03/2024 in the example, reflects the date on which the classifications and rates under the "SA" identifier took effect under state law in the state from which the rates were adopted.

WAGE DETERMINATION APPEALS PROCESS

1.Has there been an initial decision in the matter? This can be:

- a survey underlying a wage determination
- an existing published wage determination
- an initial WHD letter setting forth a position on a wage determination matter
- an initial conformance (additional classification and rate) determination

On survey related matters, initial contact, including requests for summaries of surveys, should be directed to the WHD Branch of Wage Surveys. Requests can be submitted via email to: davisbaconinfo@dol.gov or by mail to:

Branch of Wage Surveys
Wage and Hour Division
U.S. Department of Labor
200 Constitution Avenue, N.W.
Washington, DC 20210

Regarding any other wage determination matter such as conformance decisions, requests for initial decisions should be directed to the WHD Branch of Construction Wage Determinations. Requests can be submitted via email to: BCWD-Office@dol.gov or by mail to:

Branch of Construction Wage Determinations
Wage and Hour Division
U.S. Department of Labor
200 Constitution Avenue, N.W.
Washington, DC 20210

2.If an initial decision has been issued, then any interested party (those affected by the action) that disagrees with the decision can request review and reconsideration from the Wage and Hour Administrator (See 29 CFR Part 1.8 and 29 CFR Part 7). Requests for review and reconsideration can be submitted via email to dba.reconsideration@dol.gov or by mail to:

Wage and Hour Administrator
U.S. Department of Labor
200 Constitution Avenue, N.W.
Washington, DC 20210

The request should be accompanied by a full statement of the interested party's position and any information (wage payment data, project description, area practice material, etc.) that the requestor considers relevant to the issue.

3.If the decision of the Administrator is not favorable, an interested party may appeal directly to the Administrative Review Board (formerly the Wage Appeals Board), write to:

Administrative Review Board
U.S. Department of Labor
200 Constitution Avenue, N.W.
Washington, DC 20210.

=====

END OF GENERAL DECISION"

**"CONTRACTOR REQUIREMENTS AND
ACKNOWLEDGMENT FOR
WORKING ON RAILROAD RIGHT-OF-WAY"**

This document must be dated and signed by the Contractor and submitted to the State before occupying or working on Railroad right-of-way.

- 1) No change, which has a direct effect on the Railroad, will be made to construction plans without submitting revised plans and receiving approval from the Railroad. Work covered by the plans, that requires flagging, will be covered by the Railroad/Highway Agreement. For work that is a result of the contractor's discretion, flagging protection will be required when equipment crosses or is working within 25 feet (7.62 meters) of center of any live track. When deemed necessary by local Railroad officers, a flagman may be required at all times while working on Railroad right-of-way in high density rail traffic area.
- 2) Crossing of any Railroad tracks must be done at approved locations and must be full depth timber, rubber, etc. Any equipment with steel wheels, lugs or tracks must not cross steel rails without the use of rubber tires or other approved protection. This shall apply specifically to, but not be limited to, access for Contractor furnished gravel, borrow or waste sites. The Contractor will be required to obtain a permit from the Railroad, and comply with any provisions thereof, before using any private Railroad crossings. All track crossing locations must be covered by a Private Roadway and Crossing Agreement. This does not apply to any public crossing.
- 3) Costs of flagging or planking protection of the tracks, which are a direct result of the planned construction, will be paid for by the State. Costs of flagging, planking for protection of the tracks, installation of new crossings or other work caused by the Contractor's discretion, will be paid by the Contractor.
- 4) When work to be performed by the Contractor is not covered in the Railroad/Highway agreement, the Contractor must furnish a plan to the Railroad for approval showing details as to how any work that may affect the Railroad will be accomplished.
- 5) Storing of construction materials or any other material, including dirt, sand, etc., within the Railroad right-of-way, will not be allowed unless covered by an easement, construction permit, or Contractor's permit/lease.
- 6) Construction within 25 feet (7.62 meters) of the center of any track not covered by the Railroad/Highway agreement will require plan approval and authorization by the Railroad Superintendent Maintenance and Engineering. This includes, but is not limited to, any excavation, slope work and driving of sheet piling.
- 7) No vehicles, equipment or machines shall be parked or stored unattended within 25 feet (7.62 meters) of any track, on railroad right-of-way, without specific written approval of the Railroad.
- 8) When any work is to be performed on Railroad property by the Contractor that is not shown in the construction plans, the Contractor must submit a detailed plan of the work to the Railroad for their approval.

CONTRACTOR'S ACKNOWLEDGMENT:

WORK SITE LOCATION:

Company

By: _____
Name

Title

Date

Town

State

Project #

Rev. 01/01/04

FHWA-1273 – Revised October 23, 2023

REQUIRED CONTRACT PROVISIONS FEDERAL-AID CONSTRUCTION CONTRACTS

- I. General
- II. Nondiscrimination
- III. Non-segregated Facilities
- IV. Davis-Bacon and Related Act Provisions
- V. Contract Work Hours and Safety Standards Act Provisions
- VI. Subletting or Assigning the Contract
- VII. Safety: Accident Prevention
- VIII. False Statements Concerning Highway Projects
- IX. Implementation of Clean Air Act and Federal Water Pollution Control Act
- X. Certification Regarding Debarment, Suspension, Ineligibility and Voluntary Exclusion
- XI. Certification Regarding Use of Contract Funds for Lobbying
- XII. Use of United States-Flag Vessels:

ATTACHMENTS

A. Employment and Materials Preference for Appalachian Development Highway System or Appalachian Local Access Road Contracts (included in Appalachian contracts only)

I. GENERAL

1. Form FHWA-1273 must be physically incorporated in each construction contract funded under title 23, United States Code, as required in 23 CFR 633.102(b) (excluding emergency contracts solely intended for debris removal). The contractor (or subcontractor) must insert this form in each subcontract and further require its inclusion in all lower tier subcontracts (excluding purchase orders, rental agreements and other agreements for supplies or services). 23 CFR 633.102(e).

The applicable requirements of Form FHWA-1273 are incorporated by reference for work done under any purchase order, rental agreement or agreement for other services. The prime contractor shall be responsible for compliance by any subcontractor, lower-tier subcontractor or service provider. 23 CFR 633.102(e).

Form FHWA-1273 must be included in all Federal-aid design-build contracts, in all subcontracts and in lower tier subcontracts (excluding subcontracts for design services, purchase orders, rental agreements and other agreements for supplies or services) in accordance with 23 CFR 633.102. The design-builder shall be responsible for compliance by any subcontractor, lower-tier subcontractor or service provider.

Contracting agencies may reference Form FHWA-1273 in solicitation-for-bids or request-for-proposals documents, however, the Form FHWA-1273 must be physically incorporated (not referenced) in all contracts, subcontracts and lower-tier subcontracts (excluding purchase orders, rental agreements and other agreements for supplies or services related to a construction contract). 23 CFR 633.102(b).

2. Subject to the applicability criteria noted in the following sections, these contract provisions shall apply to all work

performed on the contract by the contractor's own organization and with the assistance of workers under the contractor's immediate superintendence and to all work performed on the contract by piecework, station work, or by subcontract. 23 CFR 633.102(d).

3. A breach of any of the stipulations contained in these Required Contract Provisions may be sufficient grounds for withholding of progress payments, withholding of final payment, termination of the contract, suspension / debarment or any other action determined to be appropriate by the contracting agency and FHWA.

4. Selection of Labor: During the performance of this contract, the contractor shall not use convict labor for any purpose within the limits of a construction project on a Federal-aid highway unless it is labor performed by convicts who are on parole, supervised release, or probation. 23 U.S.C. 114(b). The term Federal-aid highway does not include roadways functionally classified as local roads or rural minor collectors. 23 U.S.C. 101(a).

II. NONDISCRIMINATION (23 CFR 230.107(a); 23 CFR Part 230, Subpart A, Appendix A; EO 11246)

The provisions of this section related to 23 CFR Part 230, Subpart A, Appendix A are applicable to all Federal-aid construction contracts and to all related construction subcontracts of \$10,000 or more. The provisions of 23 CFR Part 230 are not applicable to material supply, engineering, or architectural service contracts.

In addition, the contractor and all subcontractors must comply with the following policies: Executive Order 11246, 41 CFR Part 60, 29 CFR Parts 1625-1627, 23 U.S.C. 140, Section 504 of the Rehabilitation Act of 1973, as amended (29 U.S.C. 794), Title VI of the Civil Rights Act of 1964, as amended (42 U.S.C. 2000d et seq.), and related regulations including 49 CFR Parts 21, 26, and 27; and 23 CFR Parts 200, 230, and 633.

The contractor and all subcontractors must comply with: the requirements of the Equal Opportunity Clause in 41 CFR 60-1.4(b) and, for all construction contracts exceeding \$10,000, the Standard Federal Equal Employment Opportunity Construction Contract Specifications in 41 CFR 60-4.3.

Note: The U.S. Department of Labor has exclusive authority to determine compliance with Executive Order 11246 and the policies of the Secretary of Labor including 41 CFR Part 60, and 29 CFR Parts 1625-1627. The contracting agency and the FHWA have the authority and the responsibility to ensure compliance with 23 U.S.C. 140, Section 504 of the Rehabilitation Act of 1973, as amended (29 U.S.C. 794), and Title VI of the Civil Rights Act of 1964, as amended (42 U.S.C. 2000d et seq.), and related regulations including 49 CFR Parts 21, 26, and 27; and 23 CFR Parts 200, 230, and 633.

The following provision is adopted from 23 CFR Part 230, Subpart A, Appendix A, with appropriate revisions to conform to the U.S. Department of Labor (US DOL) and FHWA requirements.

1. Equal Employment Opportunity: Equal Employment Opportunity (EEO) requirements not to discriminate and to take affirmative action to assure equal opportunity as set forth under laws, executive orders, rules, regulations (see 28 CFR Part 35, 29 CFR Part 1630, 29 CFR Parts 1625-1627, 41 CFR Part 60 and 49 CFR Part 27) and orders of the Secretary of Labor as modified by the provisions prescribed herein, and imposed pursuant to 23 U.S.C. 140, shall constitute the EEO and specific affirmative action standards for the contractor's project activities under this contract. The provisions of the Americans with Disabilities Act of 1990 (42 U.S.C. 12101 et seq.) set forth under 28 CFR Part 35 and 29 CFR Part 1630 are incorporated by reference in this contract. In the execution of this contract, the contractor agrees to comply with the following minimum specific requirement activities of EEO:

a. The contractor will work with the contracting agency and the Federal Government to ensure that it has made every good faith effort to provide equal opportunity with respect to all of its terms and conditions of employment and in their review of activities under the contract. 23 CFR 230.409 (g)(4) & (5).

b. The contractor will accept as its operating policy the following statement:

"It is the policy of this Company to assure that applicants are employed, and that employees are treated during employment, without regard to their race, religion, sex, sexual orientation, gender identity, color, national origin, age or disability. Such action shall include: employment, upgrading, demotion, or transfer; recruitment or recruitment advertising; layoff or termination; rates of pay or other forms of compensation; and selection for training, including apprenticeship, pre-apprenticeship, and/or on-the-job training."

2. EEO Officer: The contractor will designate and make known to the contracting officers an EEO Officer who will have the responsibility for and must be capable of effectively administering and promoting an active EEO program and who must be assigned adequate authority and responsibility to do so.

3. Dissemination of Policy: All members of the contractor's staff who are authorized to hire, supervise, promote, and discharge employees, or who recommend such action or are substantially involved in such action, will be made fully cognizant of and will implement the contractor's EEO policy and contractual responsibilities to provide EEO in each grade and classification of employment. To ensure that the above agreement will be met, the following actions will be taken as a minimum:

a. Periodic meetings of supervisory and personnel office employees will be conducted before the start of work and then not less often than once every six months, at which time the contractor's EEO policy and its implementation will be reviewed and explained. The meetings will be conducted by the EEO Officer or other knowledgeable company official.

b. All new supervisory or personnel office employees will be given a thorough indoctrination by the EEO Officer, covering all major aspects of the contractor's EEO obligations within thirty days following their reporting for duty with the contractor.

c. All personnel who are engaged in direct recruitment for the project will be instructed by the EEO Officer in the contractor's procedures for locating and hiring minorities and women.

d. Notices and posters setting forth the contractor's EEO policy will be placed in areas readily accessible to employees, applicants for employment and potential employees.

e. The contractor's EEO policy and the procedures to implement such policy will be brought to the attention of employees by means of meetings, employee handbooks, or other appropriate means.

4. Recruitment: When advertising for employees, the contractor will include in all advertisements for employees the notation: "An Equal Opportunity Employer." All such advertisements will be placed in publications having a large circulation among minorities and women in the area from which the project work force would normally be derived.

a. The contractor will, unless precluded by a valid bargaining agreement, conduct systematic and direct recruitment through public and private employee referral sources likely to yield qualified minorities and women. To meet this requirement, the contractor will identify sources of potential minority group employees and establish with such identified sources procedures whereby minority and women applicants may be referred to the contractor for employment consideration.

b. In the event the contractor has a valid bargaining agreement providing for exclusive hiring hall referrals, the contractor is expected to observe the provisions of that agreement to the extent that the system meets the contractor's compliance with EEO contract provisions. Where implementation of such an agreement has the effect of discriminating against minorities or women, or obligates the contractor to do the same, such implementation violates Federal nondiscrimination provisions.

c. The contractor will encourage its present employees to refer minorities and women as applicants for employment. Information and procedures with regard to referring such applicants will be discussed with employees.

5. Personnel Actions: Wages, working conditions, and employee benefits shall be established and administered, and personnel actions of every type, including hiring, upgrading, promotion, transfer, demotion, layoff, and termination, shall be taken without regard to race, color, religion, sex, sexual orientation, gender identity, national origin, age or disability. The following procedures shall be followed:

a. The contractor will conduct periodic inspections of project sites to ensure that working conditions and employee facilities do not indicate discriminatory treatment of project site personnel.

b. The contractor will periodically evaluate the spread of wages paid within each classification to determine any evidence of discriminatory wage practices.

c. The contractor will periodically review selected personnel actions in depth to determine whether there is evidence of discrimination. Where evidence is found, the contractor will promptly take corrective action. If the review indicates that the discrimination may extend beyond the actions reviewed, such corrective action shall include all affected persons.

d. The contractor will promptly investigate all complaints of alleged discrimination made to the contractor in connection with its obligations under this contract, will attempt to resolve such complaints, and will take appropriate corrective action.

within a reasonable time. If the investigation indicates that the discrimination may affect persons other than the complainant, such corrective action shall include such other persons. Upon completion of each investigation, the contractor will inform every complainant of all of their avenues of appeal.

6. Training and Promotion:

a. The contractor will assist in locating, qualifying, and increasing the skills of minorities and women who are applicants for employment or current employees. Such efforts should be aimed at developing full journey level status employees in the type of trade or job classification involved.

b. Consistent with the contractor's work force requirements and as permissible under Federal and State regulations, the contractor shall make full use of training programs (i.e., apprenticeship and on-the-job training programs for the geographical area of contract performance). In the event a special provision for training is provided under this contract, this subparagraph will be superseded as indicated in the special provision. The contracting agency may reserve training positions for persons who receive welfare assistance in accordance with 23 U.S.C. 140(a).

c. The contractor will advise employees and applicants for employment of available training programs and entrance requirements for each.

d. The contractor will periodically review the training and promotion potential of employees who are minorities and women and will encourage eligible employees to apply for such training and promotion.

7. Unions: If the contractor relies in whole or in part upon unions as a source of employees, the contractor will use good faith efforts to obtain the cooperation of such unions to increase opportunities for minorities and women. 23 CFR 230.409. Actions by the contractor, either directly or through a contractor's association acting as agent, will include the procedures set forth below:

a. The contractor will use good faith efforts to develop, in cooperation with the unions, joint training programs aimed toward qualifying more minorities and women for membership in the unions and increasing the skills of minorities and women so that they may qualify for higher paying employment.

b. The contractor will use good faith efforts to incorporate an EEO clause into each union agreement to the end that such union will be contractually bound to refer applicants without regard to their race, color, religion, sex, sexual orientation, gender identity, national origin, age, or disability.

c. The contractor is to obtain information as to the referral practices and policies of the labor union except that to the extent such information is within the exclusive possession of the labor union and such labor union refuses to furnish such information to the contractor, the contractor shall so certify to the contracting agency and shall set forth what efforts have been made to obtain such information.

d. In the event the union is unable to provide the contractor with a reasonable flow of referrals within the time limit set forth in the collective bargaining agreement, the contractor will, through independent recruitment efforts, fill the employment vacancies without regard to race, color, religion, sex, sexual orientation, gender identity, national origin, age, or disability; making full efforts to obtain qualified and/or qualifiable minorities and women. The failure of a union to provide

sufficient referrals (even though it is obligated to provide exclusive referrals under the terms of a collective bargaining agreement) does not relieve the contractor from the requirements of this paragraph. In the event the union referral practice prevents the contractor from meeting the obligations pursuant to Executive Order 11246, as amended, and these special provisions, such contractor shall immediately notify the contracting agency.

8. Reasonable Accommodation for Applicants /

Employees with Disabilities: The contractor must be familiar with the requirements for and comply with the Americans with Disabilities Act and all rules and regulations established thereunder. Employers must provide reasonable accommodation in all employment activities unless to do so would cause an undue hardship.

9. Selection of Subcontractors, Procurement of Materials and Leasing of Equipment:

The contractor shall not discriminate on the grounds of race, color, religion, sex, sexual orientation, gender identity, national origin, age, or disability in the selection and retention of subcontractors, including procurement of materials and leases of equipment. The contractor shall take all necessary and reasonable steps to ensure nondiscrimination in the administration of this contract.

a. The contractor shall notify all potential subcontractors, suppliers, and lessors of their EEO obligations under this contract.

b. The contractor will use good faith efforts to ensure subcontractor compliance with their EEO obligations.

10. Assurances Required:

a. The requirements of 49 CFR Part 26 and the State DOT's FHWA-approved Disadvantaged Business Enterprise (DBE) program are incorporated by reference.

b. The contractor, subrecipient or subcontractor shall not discriminate on the basis of race, color, national origin, or sex in the performance of this contract. The contractor shall carry out applicable requirements of 49 CFR part 26 in the award and administration of DOT-assisted contracts. Failure by the contractor to carry out these requirements is a material breach of this contract, which may result in the termination of this contract or such other remedy as the recipient deems appropriate, which may include, but is not limited to:

- (1) Withholding monthly progress payments;
- (2) Assessing sanctions;
- (3) Liquidated damages; and/or
- (4) Disqualifying the contractor from future bidding as non-responsible.

c. The Title VI and nondiscrimination provisions of U.S. DOT Order 1050.2A at Appendixes A and E are incorporated by reference. 49 CFR Part 21.

11. Records and Reports: The contractor shall keep such records as necessary to document compliance with the EEO requirements. Such records shall be retained for a period of three years following the date of the final payment to the contractor for all contract work and shall be available at reasonable times and places for inspection by authorized representatives of the contracting agency and the FHWA.

a. The records kept by the contractor shall document the following:

(1) The number and work hours of minority and non-minority group members and women employed in each work classification on the project;

(2) The progress and efforts being made in cooperation with unions, when applicable, to increase employment opportunities for minorities and women; and

(3) The progress and efforts being made in locating, hiring, training, qualifying, and upgrading minorities and women.

b. The contractors and subcontractors will submit an annual report to the contracting agency each July for the duration of the project indicating the number of minority, women, and non-minority group employees currently engaged in each work classification required by the contract work. This information is to be reported on [Form FHWA-1391](#). The staffing data should represent the project work force on board in all or any part of the last payroll period preceding the end of July. If on-the-job training is being required by special provision, the contractor will be required to collect and report training data. The employment data should reflect the work force on board during all or any part of the last payroll period preceding the end of July.

III. NONSEGREGATED FACILITIES

This provision is applicable to all Federal-aid construction contracts and to all related construction subcontracts of more than \$10,000. 41 CFR 60-1.5.

As prescribed by 41 CFR 60-1.8, the contractor must ensure that facilities provided for employees are provided in such a manner that segregation on the basis of race, color, religion, sex, sexual orientation, gender identity, or national origin cannot result. The contractor may neither require such segregated use by written or oral policies nor tolerate such use by employee custom. The contractor's obligation extends further to ensure that its employees are not assigned to perform their services at any location under the contractor's control where the facilities are segregated. The term "facilities" includes waiting rooms, work areas, restaurants and other eating areas, time clocks, restrooms, washrooms, locker rooms and other storage or dressing areas, parking lots, drinking fountains, recreation or entertainment areas, transportation, and housing provided for employees. The contractor shall provide separate or single-user restrooms and necessary dressing or sleeping areas to assure privacy between sexes.

IV. DAVIS-BACON AND RELATED ACT PROVISIONS

This section is applicable to all Federal-aid construction projects exceeding \$2,000 and to all related subcontracts and lower-tier subcontracts (regardless of subcontract size), in accordance with 29 CFR 5.5. The requirements apply to all projects located within the right-of-way of a roadway that is functionally classified as Federal-aid highway. 23 U.S.C. 113. This excludes roadways functionally classified as local roads or rural minor collectors, which are exempt. 23 U.S.C. 101. Where applicable law requires that projects be treated as a project on a Federal-aid highway, the provisions of this subpart will apply regardless of the location of the project. Examples include: Surface Transportation Block Grant Program projects funded under 23 U.S.C. 133 [excluding recreational trails projects], the Nationally Significant Freight and Highway

Projects funded under 23 U.S.C. 117, and National Highway Freight Program projects funded under 23 U.S.C. 167.

The following provisions are from the U.S. Department of Labor regulations in 29 CFR 5.5 "Contract provisions and related matters" with minor revisions to conform to the FHWA-1273 format and FHWA program requirements.

1. Minimum wages (29 CFR 5.5)

a. *Wage rates and fringe benefits.* All laborers and mechanics employed or working upon the site of the work (or otherwise working in construction or development of the project under a development statute), will be paid unconditionally and not less often than once a week, and without subsequent deduction or rebate on any account (except such payroll deductions as are permitted by regulations issued by the Secretary of Labor under the Copeland Act ([29 CFR part 3](#))), the full amount of basic hourly wages and bona fide fringe benefits (or cash equivalents thereof) due at time of payment computed at rates not less than those contained in the wage determination of the Secretary of Labor which is attached hereto and made a part hereof, regardless of any contractual relationship which may be alleged to exist between the contractor and such laborers and mechanics. As provided in paragraphs (d) and (e) of 29 CFR 5.5, the appropriate wage determinations are effective by operation of law even if they have not been attached to the contract. Contributions made or costs reasonably anticipated for bona fide fringe benefits under the Davis-Bacon Act ([40 U.S.C. 3141\(2\)\(B\)](#)) on behalf of laborers or mechanics are considered wages paid to such laborers or mechanics, subject to the provisions of paragraph 1.e. of this section; also, regular contributions made or costs incurred for more than a weekly period (but not less often than quarterly) under plans, funds, or programs which cover the particular weekly period, are deemed to be constructively made or incurred during such weekly period. Such laborers and mechanics must be paid the appropriate wage rate and fringe benefits on the wage determination for the classification(s) of work actually performed, without regard to skill, except as provided in paragraph 4. of this section. Laborers or mechanics performing work in more than one classification may be compensated at the rate specified for each classification for the time actually worked therein: *Provided*, That the employer's payroll records accurately set forth the time spent in each classification in which work is performed. The wage determination (including any additional classifications and wage rates conformed under paragraph 1.c. of this section) and the Davis-Bacon poster (WH-1321) must be posted at all times by the contractor and its subcontractors at the site of the work in a prominent and accessible place where it can be easily seen by the workers.

b. *Frequently recurring classifications.* (1) In addition to wage and fringe benefit rates that have been determined to be prevailing under the procedures set forth in [29 CFR part 1](#), a wage determination may contain, pursuant to § 1.3(f), wage and fringe benefit rates for classifications of laborers and mechanics for which conformance requests are regularly submitted pursuant to paragraph 1.c. of this section, provided that:

(i) The work performed by the classification is not performed by a classification in the wage determination for which a prevailing wage rate has been determined;

(ii) The classification is used in the area by the construction industry; and

(iii) The wage rate for the classification bears a reasonable relationship to the prevailing wage rates contained in the wage determination.

(2) The Administrator will establish wage rates for such classifications in accordance with paragraph 1.c.(1)(iii) of this section. Work performed in such a classification must be paid at no less than the wage and fringe benefit rate listed on the wage determination for such classification.

c. *Conformance.* (1) The contracting officer must require that any class of laborers or mechanics, including helpers, which is not listed in the wage determination and which is to be employed under the contract be classified in conformance with the wage determination. Conformance of an additional classification and wage rate and fringe benefits is appropriate only when the following criteria have been met:

(i) The work to be performed by the classification requested is not performed by a classification in the wage determination; and

(ii) The classification is used in the area by the construction industry; and

(iii) The proposed wage rate, including any bona fide fringe benefits, bears a reasonable relationship to the wage rates contained in the wage determination.

(2) The conformance process may not be used to split, subdivide, or otherwise avoid application of classifications listed in the wage determination.

(3) If the contractor and the laborers and mechanics to be employed in the classification (if known), or their representatives, and the contracting officer agree on the classification and wage rate (including the amount designated for fringe benefits where appropriate), a report of the action taken will be sent by the contracting officer by email to DBAconformance@dol.gov. The Administrator, or an authorized representative, will approve, modify, or disapprove every additional classification action within 30 days of receipt and so advise the contracting officer or will notify the contracting officer within the 30-day period that additional time is necessary.

(4) In the event the contractor, the laborers or mechanics to be employed in the classification or their representatives, and the contracting officer do not agree on the proposed classification and wage rate (including the amount designated for fringe benefits, where appropriate), the contracting officer will, by email to DBAconformance@dol.gov, refer the questions, including the views of all interested parties and the recommendation of the contracting officer, to the Administrator for determination. The Administrator, or an authorized representative, will issue a determination within 30 days of receipt and so advise the contracting officer or will notify the contracting officer within the 30-day period that additional time is necessary.

(5) The contracting officer must promptly notify the contractor of the action taken by the Wage and Hour Division

under paragraphs 1.c.(3) and (4) of this section. The contractor must furnish a written copy of such determination to each affected worker or it must be posted as a part of the wage determination. The wage rate (including fringe benefits where appropriate) determined pursuant to paragraph 1.c.(3) or (4) of this section must be paid to all workers performing work in the classification under this contract from the first day on which work is performed in the classification.

d. *Fringe benefits not expressed as an hourly rate.*

Whenever the minimum wage rate prescribed in the contract for a class of laborers or mechanics includes a fringe benefit which is not expressed as an hourly rate, the contractor may either pay the benefit as stated in the wage determination or may pay another bona fide fringe benefit or an hourly cash equivalent thereof.

e. *Unfunded plans.* If the contractor does not make payments to a trustee or other third person, the contractor may consider as part of the wages of any laborer or mechanic the amount of any costs reasonably anticipated in providing bona fide fringe benefits under a plan or program, *Provided*, That the Secretary of Labor has found, upon the written request of the contractor, in accordance with the criteria set forth in § 5.28, that the applicable standards of the Davis-Bacon Act have been met. The Secretary of Labor may require the contractor to set aside in a separate account assets for the meeting of obligations under the plan or program.

f. *Interest.* In the event of a failure to pay all or part of the wages required by the contract, the contractor will be required to pay interest on any underpayment of wages.

2. Withholding (29 CFR 5.5)

a. *Withholding requirements.* The contracting agency may, upon its own action, or must, upon written request of an authorized representative of the Department of Labor, withhold or cause to be withheld from the contractor so much of the accrued payments or advances as may be considered necessary to satisfy the liabilities of the prime contractor or any subcontractor for the full amount of wages and monetary relief, including interest, required by the clauses set forth in this section for violations of this contract, or to satisfy any such liabilities required by any other Federal contract, or federally assisted contract subject to Davis-Bacon labor standards, that is held by the same prime contractor (as defined in § 5.2). The necessary funds may be withheld from the contractor under this contract, any other Federal contract with the same prime contractor, or any other federally assisted contract that is subject to Davis-Bacon labor standards requirements and is held by the same prime contractor, regardless of whether the other contract was awarded or assisted by the same agency, and such funds may be used to satisfy the contractor liability for which the funds were withheld. In the event of a contractor's failure to pay any laborer or mechanic, including any apprentice or helper working on the site of the work all or part of the wages required by the contract, or upon the contractor's failure to submit the required records as discussed in paragraph 3.d. of this section, the contracting agency may on its own initiative and after written notice to the contractor, take such action as may be necessary to cause the suspension of any further payment, advance, or guarantee of funds until such violations have ceased.

b. *Priority to withheld funds.* The Department has priority to funds withheld or to be withheld in accordance with paragraph

2.a. of this section or Section V, paragraph 3.a., or both, over claims to those funds by:

- (1) A contractor's surety(ies), including without limitation performance bond sureties and payment bond sureties;
- (2) A contracting agency for its procurement costs;
- (3) A trustee(s) (either a court-appointed trustee or a U.S. trustee, or both) in bankruptcy of a contractor, or a contractor's bankruptcy estate;
- (4) A contractor's assignee(s);
- (5) A contractor's successor(s); or
- (6) A claim asserted under the Prompt Payment Act, [31 U.S.C. 3901](#)–3907.

3. Records and certified payrolls (29 CFR 5.5)

a. Basic record requirements (1) Length of record retention. All regular payrolls and other basic records must be maintained by the contractor and any subcontractor during the course of the work and preserved for all laborers and mechanics working at the site of the work (or otherwise working in construction or development of the project under a development statute) for a period of at least 3 years after all the work on the prime contract is completed.

(2) Information required. Such records must contain the name; Social Security number; last known address, telephone number, and email address of each such worker; each worker's correct classification(s) of work actually performed; hourly rates of wages paid (including rates of contributions or costs anticipated for bona fide fringe benefits or cash equivalents thereof of the types described in [40 U.S.C. 3141\(2\)\(B\)](#) of the Davis-Bacon Act); daily and weekly number of hours actually worked in total and on each covered contract; deductions made; and actual wages paid.

(3) Additional records relating to fringe benefits. Whenever the Secretary of Labor has found under paragraph 1.e. of this section that the wages of any laborer or mechanic include the amount of any costs reasonably anticipated in providing benefits under a plan or program described in [40 U.S.C. 3141\(2\)\(B\)](#) of the Davis-Bacon Act, the contractor must maintain records which show that the commitment to provide such benefits is enforceable, that the plan or program is financially responsible, and that the plan or program has been communicated in writing to the laborers or mechanics affected, and records which show the costs anticipated or the actual cost incurred in providing such benefits.

(4) Additional records relating to apprenticeship. Contractors with apprentices working under approved programs must maintain written evidence of the registration of apprenticeship programs, the registration of the apprentices, and the ratios and wage rates prescribed in the applicable programs.

b. Certified payroll requirements (1) Frequency and method of submission. The contractor or subcontractor must submit weekly, for each week in which any DBA- or Related Acts-covered work is performed, certified payrolls to the contracting

agency. The prime contractor is responsible for the submission of all certified payrolls by all subcontractors. A contracting agency or prime contractor may permit or require contractors to submit certified payrolls through an electronic system, as long as the electronic system requires a legally valid electronic signature; the system allows the contractor, the contracting agency, and the Department of Labor to access the certified payrolls upon request for at least 3 years after the work on the prime contract has been completed; and the contracting agency or prime contractor permits other methods of submission in situations where the contractor is unable or limited in its ability to use or access the electronic system.

(2) Information required. The certified payrolls submitted must set out accurately and completely all of the information required to be maintained under paragraph 3.a.(2) of this section, except that full Social Security numbers and last known addresses, telephone numbers, and email addresses must not be included on weekly transmittals. Instead, the certified payrolls need only include an individually identifying number for each worker (e.g., the last four digits of the worker's Social Security number). The required weekly certified payroll information may be submitted using Optional Form WH-347 or in any other format desired. Optional Form WH-347 is available for this purpose from the Wage and Hour Division website at <https://www.dol.gov/sites/dolgov/files/WHDL/legacy/files/wh347.pdf> or its successor website. It is not a violation of this section for a prime contractor to require a subcontractor to provide full Social Security numbers and last known addresses, telephone numbers, and email addresses to the prime contractor for its own records, without weekly submission by the subcontractor to the contracting agency.

(3) Statement of Compliance. Each certified payroll submitted must be accompanied by a "Statement of Compliance," signed by the contractor or subcontractor, or the contractor's or subcontractor's agent who pays or supervises the payment of the persons working on the contract, and must certify the following:

(i) That the certified payroll for the payroll period contains the information required to be provided under paragraph 3.b. of this section, the appropriate information and basic records are being maintained under paragraph 3.a. of this section, and such information and records are correct and complete;

(ii) That each laborer or mechanic (including each helper and apprentice) working on the contract during the payroll period has been paid the full weekly wages earned, without rebate, either directly or indirectly, and that no deductions have been made either directly or indirectly from the full wages earned, other than permissible deductions as set forth in [29 CFR part 3](#); and

(iii) That each laborer or mechanic has been paid not less than the applicable wage rates and fringe benefits or cash equivalents for the classification(s) of work actually performed, as specified in the applicable wage determination incorporated into the contract.

(4) Use of Optional Form WH-347. The weekly submission of a properly executed certification set forth on the reverse side of Optional Form WH-347 will satisfy the requirement for submission of the "Statement of Compliance" required by paragraph 3.b.(3) of this section.

(5) *Signature.* The signature by the contractor, subcontractor, or the contractor's or subcontractor's agent must be an original handwritten signature or a legally valid electronic signature.

(6) *Falsification.* The falsification of any of the above certifications may subject the contractor or subcontractor to civil or criminal prosecution under [18 U.S.C. 1001](#) and [31 U.S.C. 3729](#).

(7) *Length of certified payroll retention.* The contractor or subcontractor must preserve all certified payrolls during the course of the work and for a period of 3 years after all the work on the prime contract is completed.

c. *Contracts, subcontracts, and related documents.* The contractor or subcontractor must maintain this contract or subcontract and related documents including, without limitation, bids, proposals, amendments, modifications, and extensions. The contractor or subcontractor must preserve these contracts, subcontracts, and related documents during the course of the work and for a period of 3 years after all the work on the prime contract is completed.

d. *Required disclosures and access* (1) *Required record disclosures and access to workers.* The contractor or subcontractor must make the records required under paragraphs 3.a. through 3.c. of this section, and any other documents that the contracting agency, the State DOT, the FHWA, or the Department of Labor deems necessary to determine compliance with the labor standards provisions of any of the applicable statutes referenced by § 5.1, available for inspection, copying, or transcription by authorized representatives of the contracting agency, the State DOT, the FHWA, or the Department of Labor, and must permit such representatives to interview workers during working hours on the job.

(2) *Sanctions for non-compliance with records and worker access requirements.* If the contractor or subcontractor fails to submit the required records or to make them available, or refuses to permit worker interviews during working hours on the job, the Federal agency may, after written notice to the contractor, sponsor, applicant, owner, or other entity, as the case may be, that maintains such records or that employs such workers, take such action as may be necessary to cause the suspension of any further payment, advance, or guarantee of funds. Furthermore, failure to submit the required records upon request or to make such records available, or to permit worker interviews during working hours on the job, may be grounds for debarment action pursuant to § 5.12. In addition, any contractor or other person that fails to submit the required records or make those records available to WHD within the time WHD requests that the records be produced will be precluded from introducing as evidence in an administrative proceeding under [29 CFR part 6](#) any of the required records that were not provided or made available to WHD. WHD will take into consideration a reasonable request from the contractor or person for an extension of the time for submission of records. WHD will determine the reasonableness of the request and may consider, among other things, the location of the records and the volume of production.

(3) *Required information disclosures.* Contractors and subcontractors must maintain the full Social Security number and last known address, telephone number, and email address

of each covered worker, and must provide them upon request to the contracting agency, the State DOT, the FHWA, the contractor, or the Wage and Hour Division of the Department of Labor for purposes of an investigation or other compliance action.

4. Apprentices and equal employment opportunity (29 CFR 5.5)

a. *Apprentices (1) Rate of pay.* Apprentices will be permitted to work at less than the predetermined rate for the work they perform when they are employed pursuant to and individually registered in a bona fide apprenticeship program registered with the U.S. Department of Labor, Employment and Training Administration, Office of Apprenticeship (OA), or with a State Apprenticeship Agency recognized by the OA. A person who is not individually registered in the program, but who has been certified by the OA or a State Apprenticeship Agency (where appropriate) to be eligible for probationary employment as an apprentice, will be permitted to work at less than the predetermined rate for the work they perform in the first 90 days of probationary employment as an apprentice in such a program. In the event the OA or a State Apprenticeship Agency recognized by the OA withdraws approval of an apprenticeship program, the contractor will no longer be permitted to use apprentices at less than the applicable predetermined rate for the work performed until an acceptable program is approved.

(2) *Fringe benefits.* Apprentices must be paid fringe benefits in accordance with the provisions of the apprenticeship program. If the apprenticeship program does not specify fringe benefits, apprentices must be paid the full amount of fringe benefits listed on the wage determination for the applicable classification. If the Administrator determines that a different practice prevails for the applicable apprentice classification, fringe benefits must be paid in accordance with that determination.

(3) *Apprenticeship ratio.* The allowable ratio of apprentices to journeyworkers on the job site in any craft classification must not be greater than the ratio permitted to the contractor as to the entire work force under the registered program or the ratio applicable to the locality of the project pursuant to paragraph 4.a.(4) of this section. Any worker listed on a payroll at an apprentice wage rate, who is not registered or otherwise employed as stated in paragraph 4.a.(1) of this section, must be paid not less than the applicable wage rate on the wage determination for the classification of work actually performed. In addition, any apprentice performing work on the job site in excess of the ratio permitted under this section must be paid not less than the applicable wage rate on the wage determination for the work actually performed.

(4) *Reciprocity of ratios and wage rates.* Where a contractor is performing construction on a project in a locality other than the locality in which its program is registered, the ratios and wage rates (expressed in percentages of the journeyworker's hourly rate) applicable within the locality in which the construction is being performed must be observed. If there is no applicable ratio or wage rate for the locality of the project, the ratio and wage rate specified in the contractor's registered program must be observed.

b. *Equal employment opportunity.* The use of apprentices and journeyworkers under this part must be in conformity with

the equal employment opportunity requirements of Executive Order 11246, as amended, and [29 CFR part 30](#).

c. Apprentices and Trainees (programs of the U.S. DOT).

Apprentices and trainees working under apprenticeship and skill training programs which have been certified by the Secretary of Transportation as promoting EEO in connection with Federal-aid highway construction programs are not subject to the requirements of paragraph 4 of this Section IV. 23 CFR 230.111(e)(2). The straight time hourly wage rates for apprentices and trainees under such programs will be established by the particular programs. The ratio of apprentices and trainees to journeyworkers shall not be greater than permitted by the terms of the particular program.

5. Compliance with Copeland Act requirements. The contractor shall comply with the requirements of 29 CFR part 3, which are incorporated by reference in this contract as provided in 29 CFR 5.5.

6. Subcontracts. The contractor or subcontractor must insert FHWA-1273 in any subcontracts, along with the applicable wage determination(s) and such other clauses or contract modifications as the contracting agency may by appropriate instructions require, and a clause requiring the subcontractors to include these clauses and wage determination(s) in any lower tier subcontracts. The prime contractor is responsible for the compliance by any subcontractor or lower tier subcontractor with all the contract clauses in this section. In the event of any violations of these clauses, the prime contractor and any subcontractor(s) responsible will be liable for any unpaid wages and monetary relief, including interest from the date of the underpayment or loss, due to any workers of lower-tier subcontractors, and may be subject to debarment, as appropriate. 29 CFR 5.5.

7. Contract termination: debarment. A breach of the contract clauses in 29 CFR 5.5 may be grounds for termination of the contract, and for debarment as a contractor and a subcontractor as provided in 29 CFR 5.12.

8. Compliance with Davis-Bacon and Related Act requirements. All rulings and interpretations of the Davis-Bacon and Related Acts contained in 29 CFR parts 1, 3, and 5 are herein incorporated by reference in this contract as provided in 29 CFR 5.5.

9. Disputes concerning labor standards. As provided in 29 CFR 5.5, disputes arising out of the labor standards provisions of this contract shall not be subject to the general disputes clause of this contract. Such disputes shall be resolved in accordance with the procedures of the Department of Labor set forth in 29 CFR parts 5, 6, and 7. Disputes within the meaning of this clause include disputes between the contractor (or any of its subcontractors) and the contracting agency, the U.S. Department of Labor, or the employees or their representatives.

10. Certification of eligibility. a. By entering into this contract, the contractor certifies that neither it nor any person or firm who has an interest in the contractor's firm is a person or firm ineligible to be awarded Government contracts by virtue of [40 U.S.C. 3144\(b\)](#) or § 5.12(a).

b. No part of this contract shall be subcontracted to any person or firm ineligible for award of a Government contract by virtue of [40 U.S.C. 3144\(b\)](#) or § 5.12(a).

c. The penalty for making false statements is prescribed in the U.S. Code, Title 18 Crimes and Criminal Procedure, [18 U.S.C. 1001](#).

11. Anti-retaliation. It is unlawful for any person to discharge, demote, intimidate, threaten, restrain, coerce, blacklist, harass, or in any other manner discriminate against, or to cause any person to discharge, demote, intimidate, threaten, restrain, coerce, blacklist, harass, or in any other manner discriminate against, any worker or job applicant for:

a. Notifying any contractor of any conduct which the worker reasonably believes constitutes a violation of the DBA, Related Acts, this part, or [29 CFR part 1](#) or [3](#);

b. Filing any complaint, initiating or causing to be initiated any proceeding, or otherwise asserting or seeking to assert on behalf of themselves or others any right or protection under the DBA, Related Acts, this part, or [29 CFR part 1](#) or [3](#);

c. Cooperating in any investigation or other compliance action, or testifying in any proceeding under the DBA, Related Acts, this part, or [29 CFR part 1](#) or [3](#); or

d. Informing any other person about their rights under the DBA, Related Acts, this part, or [29 CFR part 1](#) or [3](#).

V. CONTRACT WORK HOURS AND SAFETY STANDARDS ACT

Pursuant to 29 CFR 5.5(b), the following clauses apply to any Federal-aid construction contract in an amount in excess of \$100,000 and subject to the overtime provisions of the Contract Work Hours and Safety Standards Act. These clauses shall be inserted in addition to the clauses required by 29 CFR 5.5(a) or 29 CFR 4.6. As used in this paragraph, the terms laborers and mechanics include watchpersons and guards.

1. Overtime requirements. No contractor or subcontractor contracting for any part of the contract work which may require or involve the employment of laborers or mechanics shall require or permit any such laborer or mechanic in any workweek in which he or she is employed on such work to work in excess of forty hours in such workweek unless such laborer or mechanic receives compensation at a rate not less than one and one-half times the basic rate of pay for all hours worked in excess of forty hours in such workweek. 29 CFR 5.5.

2. Violation; liability for unpaid wages; liquidated damages. In the event of any violation of the clause set forth in paragraph 1. of this section the contractor and any subcontractor responsible therefor shall be liable for the unpaid wages and interest from the date of the underpayment. In addition, such contractor and subcontractor shall be liable to the United States (in the case of work done under contract for the District of Columbia or a territory, to such District or to such territory), for liquidated damages. Such liquidated damages shall be computed with respect to each individual laborer or

mechanic, including watchpersons and guards, employed in violation of the clause set forth in paragraph 1. of this section, in the sum currently provided in 29 CFR 5.5(b)(2)* for each calendar day on which such individual was required or permitted to work in excess of the standard workweek of forty hours without payment of the overtime wages required by the clause set forth in paragraph 1. of this section.

* \$31 as of January 15, 2023 (See 88 FR 88 FR 2210) as may be adjusted annually by the Department of Labor, pursuant to the Federal Civil Penalties Inflation Adjustment Act of 1990.

3. Withholding for unpaid wages and liquidated damages

a. *Withholding process.* The FHWA or the contracting agency may, upon its own action, or must, upon written request of an authorized representative of the Department of Labor, withhold or cause to be withheld from the contractor so much of the accrued payments or advances as may be considered necessary to satisfy the liabilities of the prime contractor or any subcontractor for any unpaid wages; monetary relief, including interest; and liquidated damages required by the clauses set forth in this section on this contract, any other Federal contract with the same prime contractor, or any other federally assisted contract subject to the Contract Work Hours and Safety Standards Act that is held by the same prime contractor (as defined in § 5.2). The necessary funds may be withheld from the contractor under this contract, any other Federal contract with the same prime contractor, or any other federally assisted contract that is subject to the Contract Work Hours and Safety Standards Act and is held by the same prime contractor, regardless of whether the other contract was awarded or assisted by the same agency, and such funds may be used to satisfy the contractor liability for which the funds were withheld.

b. *Priority to withheld funds.* The Department has priority to funds withheld or to be withheld in accordance with Section IV paragraph 2.a. or paragraph 3.a. of this section, or both, over claims to those funds by:

- (1) A contractor's surety(ies), including without limitation performance bond sureties and payment bond sureties;
- (2) A contracting agency for its procurement costs;
- (3) A trustee(s) (either a court-appointed trustee or a U.S. trustee, or both) in bankruptcy of a contractor, or a contractor's bankruptcy estate;
- (4) A contractor's assignee(s);
- (5) A contractor's successor(s); or
- (6) A claim asserted under the Prompt Payment Act, [31 U.S.C. 3901](#)–3907.

4. Subcontracts. The contractor or subcontractor must insert in any subcontracts the clauses set forth in paragraphs 1. through 5. of this section and a clause requiring the subcontractors to include these clauses in any lower tier subcontracts. The prime contractor is responsible for compliance by any subcontractor or lower tier subcontractor with the clauses set forth in paragraphs 1. through 5. In the

event of any violations of these clauses, the prime contractor and any subcontractor(s) responsible will be liable for any unpaid wages and monetary relief, including interest from the date of the underpayment or loss, due to any workers of lower-tier subcontractors, and associated liquidated damages and may be subject to debarment, as appropriate.

5. Anti-retaliation. It is unlawful for any person to discharge, demote, intimidate, threaten, restrain, coerce, blacklist, harass, or in any other manner discriminate against, or to cause any person to discharge, demote, intimidate, threaten, restrain, coerce, blacklist, harass, or in any other manner discriminate against, any worker or job applicant for:

a. Notifying any contractor of any conduct which the worker reasonably believes constitutes a violation of the Contract Work Hours and Safety Standards Act (CWHSSA) or its implementing regulations in this part;

b. Filing any complaint, initiating or causing to be initiated any proceeding, or otherwise asserting or seeking to assert on behalf of themselves or others any right or protection under CWHSSA or this part;

c. Cooperating in any investigation or other compliance action, or testifying in any proceeding under CWHSSA or this part; or

d. Informing any other person about their rights under CWHSSA or this part.

VI. SUBLETTING OR ASSIGNING THE CONTRACT

This provision is applicable to all Federal-aid construction contracts on the National Highway System pursuant to 23 CFR 635.116.

1. The contractor shall perform with its own organization contract work amounting to not less than 30 percent (or a greater percentage if specified elsewhere in the contract) of the total original contract price, excluding any specialty items designated by the contracting agency. Specialty items may be performed by subcontract and the amount of any such specialty items performed may be deducted from the total original contract price before computing the amount of work required to be performed by the contractor's own organization (23 CFR 635.116).

a. The term "perform work with its own organization" in paragraph 1 of Section VI refers to workers employed or leased by the prime contractor, and equipment owned or rented by the prime contractor, with or without operators. Such term does not include employees or equipment of a subcontractor or lower tier subcontractor, agents of the prime contractor, or any other assignees. The term may include payments for the costs of hiring leased employees from an employee leasing firm meeting all relevant Federal and State regulatory requirements. Leased employees may only be included in this term if the prime contractor meets all of the following conditions: (based on longstanding interpretation)

- (1) the prime contractor maintains control over the supervision of the day-to-day activities of the leased employees;
- (2) the prime contractor remains responsible for the quality of the work of the leased employees;

(3) the prime contractor retains all power to accept or exclude individual employees from work on the project; and
 (4) the prime contractor remains ultimately responsible for the payment of predetermined minimum wages, the submission of payrolls, statements of compliance and all other Federal regulatory requirements.

b. "Specialty Items" shall be construed to be limited to work that requires highly specialized knowledge, abilities, or equipment not ordinarily available in the type of contracting organizations qualified and expected to bid or propose on the contract as a whole and in general are to be limited to minor components of the overall contract. 23 CFR 635.102.

2. Pursuant to 23 CFR 635.116(a), the contract amount upon which the requirements set forth in paragraph (1) of Section VI is computed includes the cost of material and manufactured products which are to be purchased or produced by the contractor under the contract provisions.

3. Pursuant to 23 CFR 635.116(c), the contractor shall furnish (a) a competent superintendent or supervisor who is employed by the firm, has full authority to direct performance of the work in accordance with the contract requirements, and is in charge of all construction operations (regardless of who performs the work) and (b) such other of its own organizational resources (supervision, management, and engineering services) as the contracting officer determines is necessary to assure the performance of the contract.

4. No portion of the contract shall be sublet, assigned or otherwise disposed of except with the written consent of the contracting officer, or authorized representative, and such consent when given shall not be construed to relieve the contractor of any responsibility for the fulfillment of the contract. Written consent will be given only after the contracting agency has assured that each subcontract is evidenced in writing and that it contains all pertinent provisions and requirements of the prime contract. (based on long-standing interpretation of 23 CFR 635.116).

5. The 30-percent self-performance requirement of paragraph (1) is not applicable to design-build contracts; however, contracting agencies may establish their own self-performance requirements. 23 CFR 635.116(d).

VII. SAFETY: ACCIDENT PREVENTION

This provision is applicable to all Federal-aid construction contracts and to all related subcontracts.

1. In the performance of this contract the contractor shall comply with all applicable Federal, State, and local laws governing safety, health, and sanitation (23 CFR Part 635). The contractor shall provide all safeguards, safety devices and protective equipment and take any other needed actions as it determines, or as the contracting officer may determine, to be reasonably necessary to protect the life and health of employees on the job and the safety of the public and to protect property in connection with the performance of the work covered by the contract. 23 CFR 635.108.

2. It is a condition of this contract, and shall be made a condition of each subcontract, which the contractor enters into pursuant to this contract, that the contractor and any subcontractor shall not permit any employee, in performance of the contract, to work in surroundings or under conditions which are unsanitary, hazardous or dangerous to his/her health or safety, as determined under construction safety and

health standards (29 CFR Part 1926) promulgated by the Secretary of Labor, in accordance with Section 107 of the Contract Work Hours and Safety Standards Act (40 U.S.C. 3704). 29 CFR 1926.10.

3. Pursuant to 29 CFR 1926.3, it is a condition of this contract that the Secretary of Labor or authorized representative thereof, shall have right of entry to any site of contract performance to inspect or investigate the matter of compliance with the construction safety and health standards and to carry out the duties of the Secretary under Section 107 of the Contract Work Hours and Safety Standards Act (40 U.S.C. 3704).

VIII. FALSE STATEMENTS CONCERNING HIGHWAY PROJECTS

This provision is applicable to all Federal-aid construction contracts and to all related subcontracts.

In order to assure high quality and durable construction in conformity with approved plans and specifications and a high degree of reliability on statements and representations made by engineers, contractors, suppliers, and workers on Federal-aid highway projects, it is essential that all persons concerned with the project perform their functions as carefully, thoroughly, and honestly as possible. Willful falsification, distortion, or misrepresentation with respect to any facts related to the project is a violation of Federal law. To prevent any misunderstanding regarding the seriousness of these and similar acts, Form FHWA-1022 shall be posted on each Federal-aid highway project (23 CFR Part 635) in one or more places where it is readily available to all persons concerned with the project:

18 U.S.C. 1020 reads as follows:

"Whoever, being an officer, agent, or employee of the United States, or of any State or Territory, or whoever, whether a person, association, firm, or corporation, knowingly makes any false statement, false representation, or false report as to the character, quality, quantity, or cost of the material used or to be used, or the quantity or quality of the work performed or to be performed, or the cost thereof in connection with the submission of plans, maps, specifications, contracts, or costs of construction on any highway or related project submitted for approval to the Secretary of Transportation; or

Whoever knowingly makes any false statement, false representation, false report or false claim with respect to the character, quality, quantity, or cost of any work performed or to be performed, or materials furnished or to be furnished, in connection with the construction of any highway or related project approved by the Secretary of Transportation; or

Whoever knowingly makes any false statement or false representation as to material fact in any statement, certificate, or report submitted pursuant to provisions of the Federal-aid Roads Act approved July 11, 1916, (39 Stat. 355), as amended and supplemented;

Shall be fined under this title or imprisoned not more than 5 years or both."

IX. IMPLEMENTATION OF CLEAN AIR ACT AND FEDERAL WATER POLLUTION CONTROL ACT (42 U.S.C. 7606; 2 CFR 200.88; EO 11738)

This provision is applicable to all Federal-aid construction contracts in excess of \$150,000 and to all related subcontracts. 48 CFR 2.101; 2 CFR 200.327.

By submission of this bid/proposal or the execution of this contract or subcontract, as appropriate, the bidder, proposer, Federal-aid construction contractor, subcontractor, supplier, or vendor agrees to comply with all applicable standards, orders or regulations issued pursuant to the Clean Air Act (42 U.S.C. 7401-7671q) and the Federal Water Pollution Control Act, as amended (33 U.S.C. 1251-1387). Violations must be reported to the Federal Highway Administration and the Regional Office of the Environmental Protection Agency. 2 CFR Part 200, Appendix II.

The contractor agrees to include or cause to be included the requirements of this Section in every subcontract, and further agrees to take such action as the contracting agency may direct as a means of enforcing such requirements. 2 CFR 200.327.

X. CERTIFICATION REGARDING DEBARMENT, SUSPENSION, INELIGIBILITY AND VOLUNTARY EXCLUSION

This provision is applicable to all Federal-aid construction contracts, design-build contracts, subcontracts, lower-tier subcontracts, purchase orders, lease agreements, consultant contracts or any other covered transaction requiring FHWA approval or that is estimated to cost \$25,000 or more – as defined in 2 CFR Parts 180 and 1200. 2 CFR 180.220 and 1200.220.

1. Instructions for Certification – First Tier Participants:

a. By signing and submitting this proposal, the prospective first tier participant is providing the certification set out below.

b. The inability of a person to provide the certification set out below will not necessarily result in denial of participation in this covered transaction. The prospective first tier participant shall submit an explanation of why it cannot provide the certification set out below. The certification or explanation will be considered in connection with the department or agency's determination whether to enter into this transaction. However, failure of the prospective first tier participant to furnish a certification or an explanation shall disqualify such a person from participation in this transaction. 2 CFR 180.320.

c. The certification in this clause is a material representation of fact upon which reliance was placed when the contracting agency determined to enter into this transaction. If it is later determined that the prospective participant knowingly rendered an erroneous certification, in addition to other remedies available to the Federal Government, the contracting agency may terminate this transaction for cause of default. 2 CFR 180.325.

d. The prospective first tier participant shall provide immediate written notice to the contracting agency to whom this proposal is submitted if any time the prospective first tier participant learns that its certification was erroneous when submitted or has become erroneous by reason of changed circumstances. 2 CFR 180.345 and 180.350.

e. The terms "covered transaction," "debarred," "suspended," "ineligible," "participant," "person," "principal," and "voluntarily excluded," as used in this clause, are defined in 2 CFR Parts 180, Subpart I, 180.900-180.1020, and 1200. "First Tier Covered Transactions" refers to any covered transaction between a recipient or subrecipient of Federal funds and a participant (such as the prime or general contract). "Lower Tier Covered Transactions" refers to any covered transaction under a First Tier Covered Transaction (such as subcontracts). "First Tier Participant" refers to the participant who has entered into a covered transaction with a recipient or subrecipient of Federal funds (such as the prime or general contractor). "Lower Tier Participant" refers any participant who has entered into a covered transaction with a First Tier Participant or other Lower Tier Participants (such as subcontractors and suppliers).

f. The prospective first tier participant agrees by submitting this proposal that, should the proposed covered transaction be entered into, it shall not knowingly enter into any lower tier covered transaction with a person who is debarred, suspended, declared ineligible, or voluntarily excluded from participation in this covered transaction, unless authorized by the department or agency entering into this transaction. 2 CFR 180.330.

g. The prospective first tier participant further agrees by submitting this proposal that it will include the clause titled "Certification Regarding Debarment, Suspension, Ineligibility and Voluntary Exclusion-Lower Tier Covered Transactions," provided by the department or contracting agency, entering into this covered transaction, without modification, in all lower tier covered transactions and in all solicitations for lower tier covered transactions exceeding the \$25,000 threshold. 2 CFR 180.220 and 180.300.

h. A participant in a covered transaction may rely upon a certification of a prospective participant in a lower tier covered transaction that is not debarred, suspended, ineligible, or voluntarily excluded from the covered transaction, unless it knows that the certification is erroneous. 2 CFR 180.300; 180.320, and 180.325. A participant is responsible for ensuring that its principals are not suspended, debarred, or otherwise ineligible to participate in covered transactions. 2 CFR 180.335. To verify the eligibility of its principals, as well as the eligibility of any lower tier prospective participants, each participant may, but is not required to, check the System for Award Management website (<https://www.sam.gov/>). 2 CFR 180.300, 180.320, and 180.325.

i. Nothing contained in the foregoing shall be construed to require the establishment of a system of records in order to render in good faith the certification required by this clause. The knowledge and information of the prospective participant is not required to exceed that which is normally possessed by a prudent person in the ordinary course of business dealings.

j. Except for transactions authorized under paragraph (f) of these instructions, if a participant in a covered transaction knowingly enters into a lower tier covered transaction with a person who is suspended, debarred, ineligible, or voluntarily excluded from participation in this transaction, in addition to other remedies available to the Federal Government, the department or agency may terminate this transaction for cause or default. 2 CFR 180.325.

2. Certification Regarding Debarment, Suspension, Ineligibility and Voluntary Exclusion – First Tier Participants:

a. The prospective first tier participant certifies to the best of its knowledge and belief, that it and its principals:

(1) Are not presently debarred, suspended, proposed for debarment, declared ineligible, or voluntarily excluded from participating in covered transactions by any Federal department or agency, 2 CFR 180.335;.

(2) Have not within a three-year period preceding this proposal been convicted of or had a civil judgment rendered against them for commission of fraud or a criminal offense in connection with obtaining, attempting to obtain, or performing a public (Federal, State, or local) transaction or contract under a public transaction; violation of Federal or State antitrust statutes or commission of embezzlement, theft, forgery, bribery, falsification or destruction of records, making false statements, or receiving stolen property, 2 CFR 180.800;

(3) Are not presently indicted for or otherwise criminally or civilly charged by a governmental entity (Federal, State or local) with commission of any of the offenses enumerated in paragraph (a)(2) of this certification, 2 CFR 180.700 and 180.800; and

(4) Have not within a three-year period preceding this application/proposal had one or more public transactions (Federal, State or local) terminated for cause or default. 2 CFR 180.335(d).

(5) Are not a corporation that has been convicted of a felony violation under any Federal law within the two-year period preceding this proposal (USDOT Order 4200.6 implementing appropriations act requirements); and

(6) Are not a corporation with any unpaid Federal tax liability that has been assessed, for which all judicial and administrative remedies have been exhausted, or have lapsed, and that is not being paid in a timely manner pursuant to an agreement with the authority responsible for collecting the tax liability (USDOT Order 4200.6 implementing appropriations act requirements).

b. Where the prospective participant is unable to certify to any of the statements in this certification, such prospective participant should attach an explanation to this proposal. 2 CFR 180.335 and 180.340.

3. Instructions for Certification - Lower Tier Participants:

(Applicable to all subcontracts, purchase orders, and other lower tier transactions requiring prior FHWA approval or estimated to cost \$25,000 or more - 2 CFR Parts 180 and 1200). 2 CFR 180.220 and 1200.220.

a. By signing and submitting this proposal, the prospective lower tier participant is providing the certification set out below.

b. The certification in this clause is a material representation of fact upon which reliance was placed when this transaction was entered into. If it is later determined that the prospective lower tier participant knowingly rendered an erroneous certification, in addition to other remedies available to the Federal Government, the department, or agency with which

this transaction originated may pursue available remedies, including suspension and/or debarment.

c. The prospective lower tier participant shall provide immediate written notice to the person to which this proposal is submitted if at any time the prospective lower tier participant learns that its certification was erroneous by reason of changed circumstances. 2 CFR 180.365.

d. The terms "covered transaction," "debarred," "suspended," "ineligible," "participant," "person," "principal," and "voluntarily excluded," as used in this clause, are defined in 2 CFR Parts 180, Subpart I, 180.900 – 180.1020, and 1200. You may contact the person to which this proposal is submitted for assistance in obtaining a copy of those regulations. "First Tier Covered Transactions" refers to any covered transaction between a recipient or subrecipient of Federal funds and a participant (such as the prime or general contractor). "Lower Tier Covered Transactions" refers to any covered transaction under a First Tier Covered Transaction (such as subcontracts). "First Tier Participant" refers to the participant who has entered into a covered transaction with a recipient or subrecipient of Federal funds (such as the prime or general contractor). "Lower Tier Participant" refers any participant who has entered into a covered transaction with a First Tier Participant or other Lower Tier Participants (such as subcontractors and suppliers).

e. The prospective lower tier participant agrees by submitting this proposal that, should the proposed covered transaction be entered into, it shall not knowingly enter into any lower tier covered transaction with a person who is debarred, suspended, declared ineligible, or voluntarily excluded from participation in this covered transaction, unless authorized by the department or agency with which this transaction originated. 2 CFR 1200.220 and 1200.332.

f. The prospective lower tier participant further agrees by submitting this proposal that it will include this clause titled "Certification Regarding Debarment, Suspension, Ineligibility and Voluntary Exclusion-Lower Tier Covered Transaction," without modification, in all lower tier covered transactions and in all solicitations for lower tier covered transactions exceeding the \$25,000 threshold. 2 CFR 180.220 and 1200.220.

g. A participant in a covered transaction may rely upon a certification of a prospective participant in a lower tier covered transaction that is not debarred, suspended, ineligible, or voluntarily excluded from the covered transaction, unless it knows that the certification is erroneous. A participant is responsible for ensuring that its principals are not suspended, debarred, or otherwise ineligible to participate in covered transactions. To verify the eligibility of its principals, as well as the eligibility of any lower tier prospective participants, each participant may, but is not required to, check the System for Award Management website (<https://www.sam.gov/>), which is compiled by the General Services Administration. 2 CFR 180.300, 180.320, 180.330, and 180.335.

h. Nothing contained in the foregoing shall be construed to require establishment of a system of records in order to render in good faith the certification required by this clause. The knowledge and information of participant is not required to exceed that which is normally possessed by a prudent person in the ordinary course of business dealings.

i. Except for transactions authorized under paragraph e of these instructions, if a participant in a covered transaction knowingly enters into a lower tier covered transaction with a person who is suspended, debarred, ineligible, or voluntarily

excluded from participation in this transaction, in addition to other remedies available to the Federal Government, the department or agency with which this transaction originated may pursue available remedies, including suspension and/or debarment. 2 CFR 180.325.

* * * * *

4. Certification Regarding Debarment, Suspension, Ineligibility and Voluntary Exclusion--Lower Tier Participants:

a. The prospective lower tier participant certifies, by submission of this proposal, that neither it nor its principals:

(1) is presently debarred, suspended, proposed for debarment, declared ineligible, or voluntarily excluded from participating in covered transactions by any Federal department or agency, 2 CFR 180.355;

(2) is a corporation that has been convicted of a felony violation under any Federal law within the two-year period preceding this proposal (USDOT Order 4200.6 implementing appropriations act requirements); and

(3) is a corporation with any unpaid Federal tax liability that has been assessed, for which all judicial and administrative remedies have been exhausted, or have lapsed, and that is not being paid in a timely manner pursuant to an agreement with the authority responsible for collecting the tax liability. (USDOT Order 4200.6 implementing appropriations act requirements)

b. Where the prospective lower tier participant is unable to certify to any of the statements in this certification, such prospective participant should attach an explanation to this proposal.

* * * * *

XI. CERTIFICATION REGARDING USE OF CONTRACT FUNDS FOR LOBBYING

This provision is applicable to all Federal-aid construction contracts and to all related subcontracts which exceed \$100,000. 49 CFR Part 20, App. A.

1. The prospective participant certifies, by signing and submitting this bid or proposal, to the best of his or her knowledge and belief, that:

a. No Federal appropriated funds have been paid or will be paid, by or on behalf of the undersigned, to any person for influencing or attempting to influence an officer or employee of any Federal agency, a Member of Congress, an officer or employee of Congress, or an employee of a Member of Congress in connection with the awarding of any Federal contract, the making of any Federal grant, the making of any Federal loan, the entering into of any cooperative agreement, and the extension, continuation, renewal, amendment, or modification of any Federal contract, grant, loan, or cooperative agreement.

b. If any funds other than Federal appropriated funds have been paid or will be paid to any person for influencing or attempting to influence an officer or employee of any Federal agency, a Member of Congress, an officer or employee of Congress, or an employee of a Member of Congress in connection with this Federal contract, grant, loan, or

cooperative agreement, the undersigned shall complete and submit Standard Form-LLL, "Disclosure Form to Report Lobbying," in accordance with its instructions.

2. This certification is a material representation of fact upon which reliance was placed when this transaction was made or entered into. Submission of this certification is a prerequisite for making or entering into this transaction imposed by 31 U.S.C. 1352. Any person who fails to file the required certification shall be subject to a civil penalty of not less than \$10,000 and not more than \$100,000 for each such failure.

3. The prospective participant also agrees by submitting its bid or proposal that the participant shall require that the language of this certification be included in all lower tier subcontracts, which exceed \$100,000 and that all such recipients shall certify and disclose accordingly.

XII. USE OF UNITED STATES-FLAG VESSELS:

This provision is applicable to all Federal-aid construction contracts, design-build contracts, subcontracts, lower-tier subcontracts, purchase orders, lease agreements, or any other covered transaction. 46 CFR Part 381.

This requirement applies to material or equipment that is acquired for a specific Federal-aid highway project. 46 CFR 381.7. It is not applicable to goods or materials that come into inventories independent of an FHWA funded-contract.

When oceanic shipments (or shipments across the Great Lakes) are necessary for materials or equipment acquired for a specific Federal-aid construction project, the bidder, proposer, contractor, subcontractor, or vendor agrees:

1. To utilize privately owned United States-flag commercial vessels to ship at least 50 percent of the gross tonnage (computed separately for dry bulk carriers, dry cargo liners, and tankers) involved, whenever shipping any equipment, material, or commodities pursuant to this contract, to the extent such vessels are available at fair and reasonable rates for United States-flag commercial vessels. 46 CFR 381.7.

2. To furnish within 20 days following the date of loading for shipments originating within the United States or within 30 working days following the date of loading for shipments originating outside the United States, a legible copy of a rated, 'on-board' commercial ocean bill-of-lading in English for each shipment of cargo described in paragraph (b)(1) of this section to both the Contracting Officer (through the prime contractor in the case of subcontractor bills-of-lading) and to the Office of Cargo and Commercial Sealift (MAR-620), Maritime Administration, Washington, DC 20590. (MARAD requires copies of the ocean carrier's (master) bills of lading, certified onboard, dated, with rates and charges. These bills of lading may contain business sensitive information and therefore may be submitted directly to MARAD by the Ocean Transportation Intermediary on behalf of the contractor). 46 CFR 381.7.

**ATTACHMENT A - EMPLOYMENT AND MATERIALS
PREFERENCE FOR APPALACHIAN DEVELOPMENT
HIGHWAY SYSTEM OR APPALACHIAN LOCAL ACCESS
ROAD CONTRACTS (23 CFR 633, Subpart B, Appendix B)**

This provision is applicable to all Federal-aid projects funded under the Appalachian Regional Development Act of 1965.

1. During the performance of this contract, the contractor undertaking to do work which is, or reasonably may be, done as on-site work, shall give preference to qualified persons who regularly reside in the labor area as designated by the DOL wherein the contract work is situated, or the subregion, or the Appalachian counties of the State wherein the contract work is situated, except:

a. To the extent that qualified persons regularly residing in the area are not available.

b. For the reasonable needs of the contractor to employ supervisory or specially experienced personnel necessary to assure an efficient execution of the contract work.

c. For the obligation of the contractor to offer employment to present or former employees as the result of a lawful collective bargaining contract, provided that the number of nonresident persons employed under this subparagraph (1c) shall not exceed 20 percent of the total number of employees employed by the contractor on the contract work, except as provided in subparagraph (4) below.

2. The contractor shall place a job order with the State Employment Service indicating (a) the classifications of the laborers, mechanics and other employees required to perform the contract work, (b) the number of employees required in each classification, (c) the date on which the participant estimates such employees will be required, and (d) any other pertinent information required by the State Employment Service to complete the job order form. The job order may be placed with the State Employment Service in writing or by telephone. If during the course of the contract work, the information submitted by the contractor in the original job order is substantially modified, the participant shall promptly notify the State Employment Service.

3. The contractor shall give full consideration to all qualified job applicants referred to him by the State Employment Service. The contractor is not required to grant employment to any job applicants who, in his opinion, are not qualified to perform the classification of work required.

4. If, within one week following the placing of a job order by the contractor with the State Employment Service, the State Employment Service is unable to refer any qualified job applicants to the contractor, or less than the number requested, the State Employment Service will forward a certificate to the contractor indicating the unavailability of applicants. Such certificate shall be made a part of the contractor's permanent project records. Upon receipt of this certificate, the contractor may employ persons who do not normally reside in the labor area to fill positions covered by the certificate, notwithstanding the provisions of subparagraph (1c) above.

5. The provisions of 23 CFR 633.207(e) allow the contracting agency to provide a contractual preference for the use of mineral resource materials native to the Appalachian region.

6. The contractor shall include the provisions of Sections 1 through 4 of this Attachment A in every subcontract for work which is, or reasonably may be, done as on-site work.

Supplemental Revisions for FHWA Form-1273 (Dated May 1, 2012)
Required Contract Provisions
Federal-Aid Construction Contracts

The following are supplementary or amendatory to the May 1, 2012, FHWA Form-1273 insofar as they apply to this contract:

Add the following provisions in accordance with the FHWA memo dated December 11, 2015:

Utilize privately owned United States-flag commercial vessels to ship at least 50 percent of the gross tonnage (computed separately for dry bulk carriers, dry cargo liners, and tankers) involved, whenever shipping any equipment, material, or commodities pursuant to this contract, to the extent such vessels are available at fair and reasonable rates for United States-flag commercial vessels.

Furnish within 20 days following the date of loading for shipments originating within the United States or within 30 working days following the date of loading for shipments originating outside the United States, a legible copy of a rated, 'on-board' commercial ocean bill-of-lading in English for each shipment of cargo described in above paragraph to both the Contracting Officer (through the prime contractor in the case of subcontractor bills-of-lading) and to the Division of National Cargo, Office of Market Development, Maritime Administration, Washington, DC 20590.

SPECIAL PROVISIONS**EEO AFFIRMATIVE ACTION REQUIREMENTS ON FEDERAL & FEDERAL-AID CONSTRUCTION CONTRACTS**

Federal-aid contractors are hereby notified they are subject to the OFCCP goals and economic areas for minority and female participation expressed below. Compliance with the goals and OFCCP affirmative action efforts for contracts and subcontracts consisting of \$10,000 or more will be determined by OFCCP officials.

Notice of Requirement for Affirmative Action to Ensure Equal Employment Opportunity (Executive Order 11246)

1. The Offeror's or Bidder's attention is called to the Equal Opportunity Clause and "Standard Federal Equal Employment Opportunity Construction Contract Specifications" set forth herein.
2. The goals and timetables for minority and female participation, expressed in percentage terms for the Contractor's aggregate workforce in each trade on all construction work in the covered area, are as follows:

GOALS FOR FEMALE PARTICIPATION (statewide) 6.9%

GOALS FOR MINORITY PARTICIPATION IN EACH TRADE**Economic Areas:**

152	Non-SMSA (Standard Metropolitan Statistical Area) Counties Daniels, Richland, Roosevelt, Sheridan	4.4%
153	Great Falls, MT SMSA Counties 3040 Great Falls, MT Cascade	3.2%
	Non-SMSA Counties Blaine, Broadwater, Chouteau, Fergus, Glacier, Hill, Jefferson, Judith Basin, Lewis & Clark, Liberty, Meagher, Petroleum, Phillips, Pondera, Teton, Toole, Valley, Wheatland	4.1%
154	Missoula, MT Non-SMSA Counties Beaverhead, Deer Lodge, Flathead, Granite, Lake, Lincoln, Madison, Mineral, Missoula, Powell, Ravalli, Sanders, Silver Bow	2.7%
155	Billings, MT SMSA Counties 0880 Billings, MT Yellowstone	3.3%
	Non-SMSA Counties Big Horn, Carbon, Carter, Custer, Dawson, Fallon, Gallatin, Garfield, Golden Valley, McCone, Musselshell, Park, Powder River, Prairie, Rosebud, Stillwater, Sweet Grass, Treasure, Wibaux, Yellowstone Nat'l Park	3.3%

These goals are applicable to all the Contractor's construction work (whether or not it is Federal or federally assisted) performed in the covered area. If the contractor performs construction work in a geographical area located outside of the covered area, it shall apply the goals established for such geographical area where the work is actually performed. With regard to this second area, the contractor also is subject to the goals for both its federally involved and non-federally involved construction.

The Contractor's compliance with the Executive Order and the regulations in 41 CFR Part 60-4 shall be based on its implementation of the Equal Opportunity Clause, specific affirmative action obligations required by the specifications set forth in 41 CFR 60-4.3(a), and its efforts to meet the goals. The hours of minority and female employment and training must be substantially uniform throughout the length of the contract, and in each trade, and the contractor shall make a good faith effort to employ minorities and women evenly on each of its projects. The transfer of minority or female employees or trainees from Contractor to Contractor or from project to project for the sole purpose of meeting the Contractor's goals shall be a violation of the contract, the Executive Order and the regulations in 41 CFR Part 60-4. Compliance with the goals will be measured against the total work hours performed.

3. The contractor shall provide written notification to the Director of the Office of Federal Contract Compliance Programs within 10 working days of award of any construction subcontract in excess of \$10,000 at any tier for construction work under the contract resulting from this solicitation. The notification shall list the name, address and telephone number of the subcontractor; employer identification number of the subcontractor; estimated dollar amount of the subcontract; estimated starting and completion dates of the subcontract; and the geographical area in which the subcontract is to be performed.