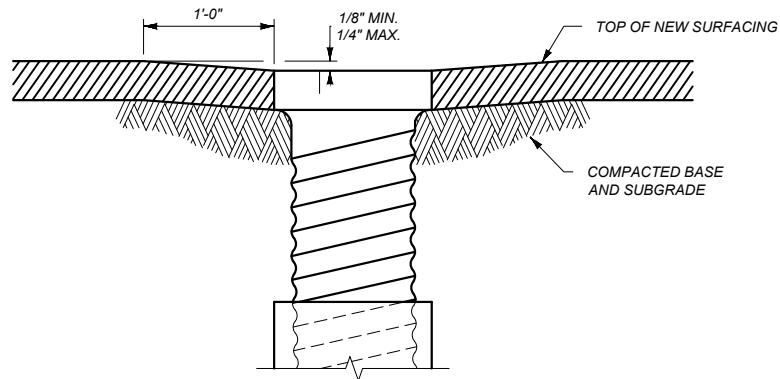


NOTES:

- ① RAISE MANHOLE LID FRAME ASSEMBLY TO NEEDED ELEVATION USING VERTICAL ADJUSTMENT RINGS.
- ② LOWER MANHOLE BY REPLACING CONE AND BARREL SECTION LENGTHS WITH SHORTER LENGTHS AS NEEDED.
- ③ SLOPE MANHOLE FRAME TO MATCH FINISHED SURFACING CROSS SLOPE.
- ④ MAKE FINAL MANHOLE ADJUSTMENTS BEFORE PAVING.

MANHOLE ADJUSTMENT DETAIL



NOTES:

- ① ADJUST WATER VALVES UPWARD OR DOWNWARD AS REQUIRED.
- ② MAKE FINAL ADJUSTMENT BEFORE PAVING.

VALVE BOX ADJUSTMENT DETAIL

DETAILED DRAWINGS

| | |
|------------------|----------|
| REFERENCE | DWG. NO. |
| STANDARD SPEC. | 621-00 |
| SECTION 604, 621 | |

**MANHOLE AND VALVE BOX
ADJUSTMENT DETAILS**

EFFECTIVE: JAN 23, 2020

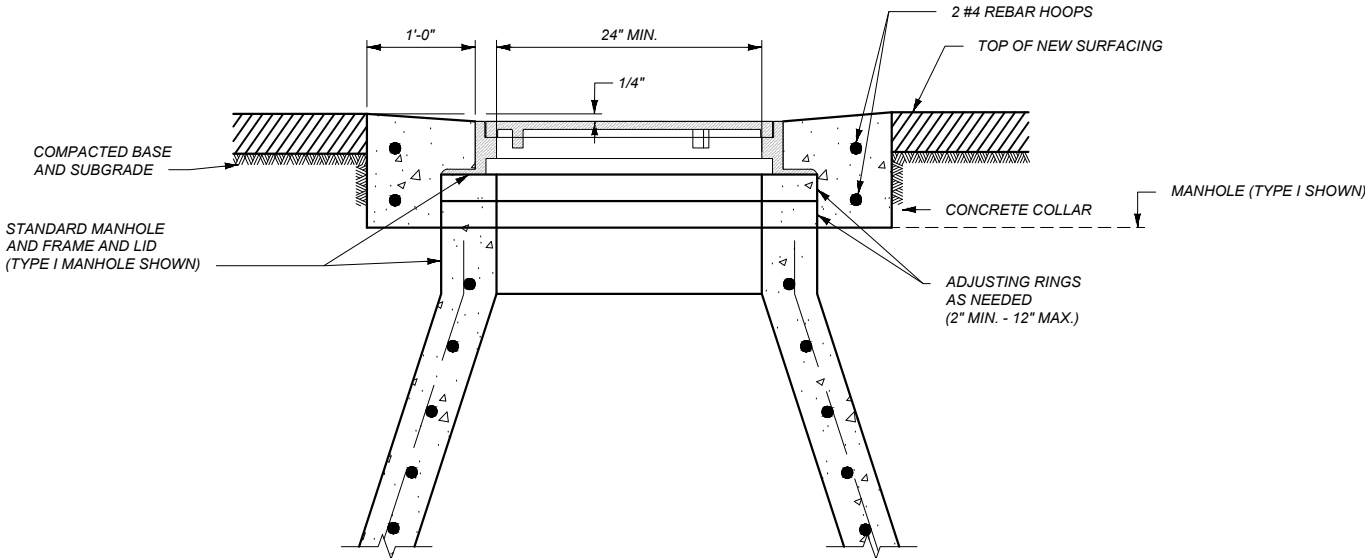


MONTANA
Department of Transportation

--REVISED--
APR 28, 2022
JUN 27, 2024
JAN 15, 2026

11/29/2025 8:42 AM

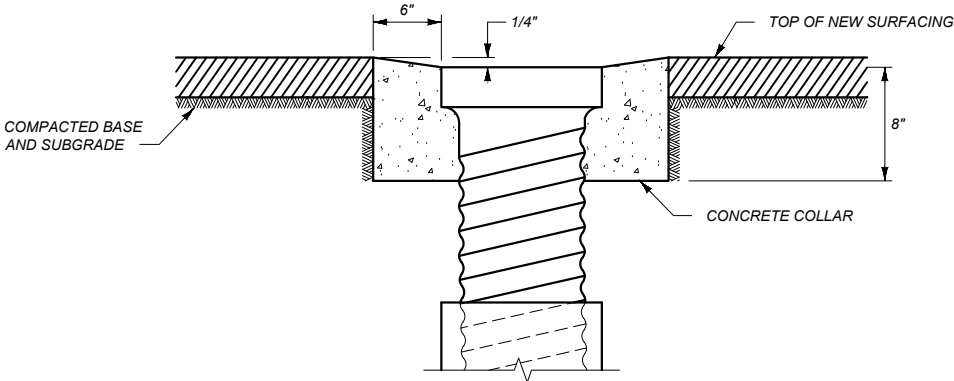
STDDRD621000.DWG



NOTES:

- 1 RAISE MANHOLE LID FRAME ASSEMBLY TO NEEDED ELEVATION USING VERTICAL ADJUSTMENT RINGS.
- 2 LOWER MANHOLE BY REPLACING CONE AND BARREL SECTION LENGTHS WITH SHORTER LENGTHS AS NEEDED.
- 3 SLOPE MANHOLE FRAME TO MATCH FINISHED SURFACING CROSS SLOPE.
- 4 CONSTRUCT CONCRETE COLLAR USING CLASS GENERAL CONCRETE OR APPROVED EQUAL.

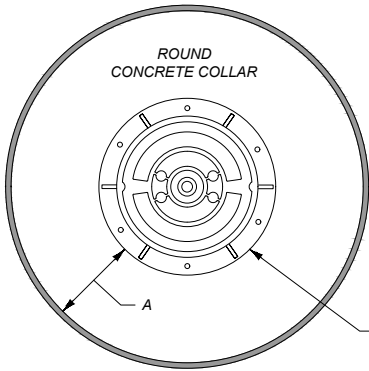
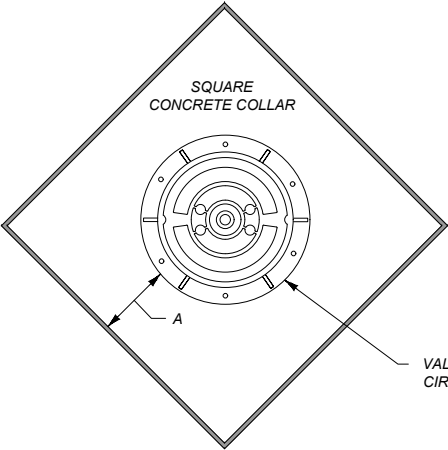
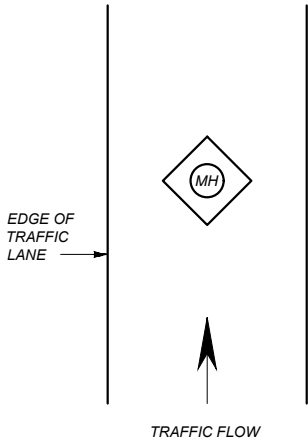
MANHOLE ADJUSTMENT DETAIL



NOTES:

- 1 ADJUST WATER VALVES UPWARD OR DOWNWARD AS REQUIRED.
- 2 CONSTRUCT CONCRETE COLLAR OF CLASS GENERAL CONCRETE OR APPROVED EQUAL.

VALVE BOX ADJUSTMENT DETAIL



| TYPE | DIMENSIONS | SQUARE COLLAR QUANTITIES | ROUND COLLAR QUANTITIES |
|---------|------------|--------------------------|-------------------------|
| | A | CLASS GENERAL CONCRETE | CLASS GENERAL CONCRETE |
| MANHOLE | 1'-0" | 0.5 C.Y. | 0.4 C.Y. |
| VALVE | 0'-6" | 0.2 C.Y. | 0.1 C.Y. |

CONCRETE COLLAR DETAIL

DETAILED DRAWINGS

REFERENCE DWG. NO.
STANDARD SPEC. 621-05
SECTION 604, 621

MANHOLE AND VALVE BOX
ADJUSTMENT DETAILS

EFFECTIVE: JAN 23, 2020



MONTANA
Department of Transportation

--REVISED--
APR 28, 2022
JUN 27, 2024
JAN 15, 2026

2/20/2024 2:08 PM

STDDRD621005.DWG