

SYSTEM DESIGNATIONS

- | | |
|----------------|--------------------|
| NHS Interstate | NHS Non-Interstate |
| Primary | Secondary |
| Urban | State Maintained |
| Off System | Alley |

ROUTE SURFACE TYPE

- | | |
|-------|---------|
| Paved | Unpaved |
|-------|---------|

ROUTE SIGNING

- | | |
|--------------------|--------------|
| Interstate Highway | U.S. Highway |
| Montana Route | Route |

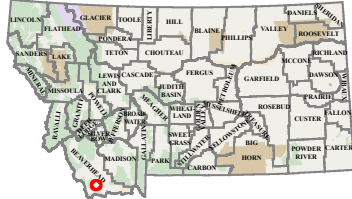
BOUNDARIES

- | |
|--------------------------|
| County Line |
| City Boundary |
| National Park Service |
| Reservation |
| National Forest Service |
| State Park |
| US Fish Wildlife Service |

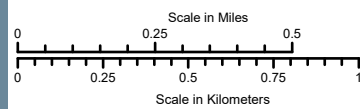
OTHER SYMBOLS

- | | |
|--------------------------------|------------------|
| Stream | Canal or Ditch |
| Water | Reference Marker |
| Railroad | Public Airport |
| Bridge | Parking Area |
| Rest Area: Year-Round/Seasonal | |

City Location



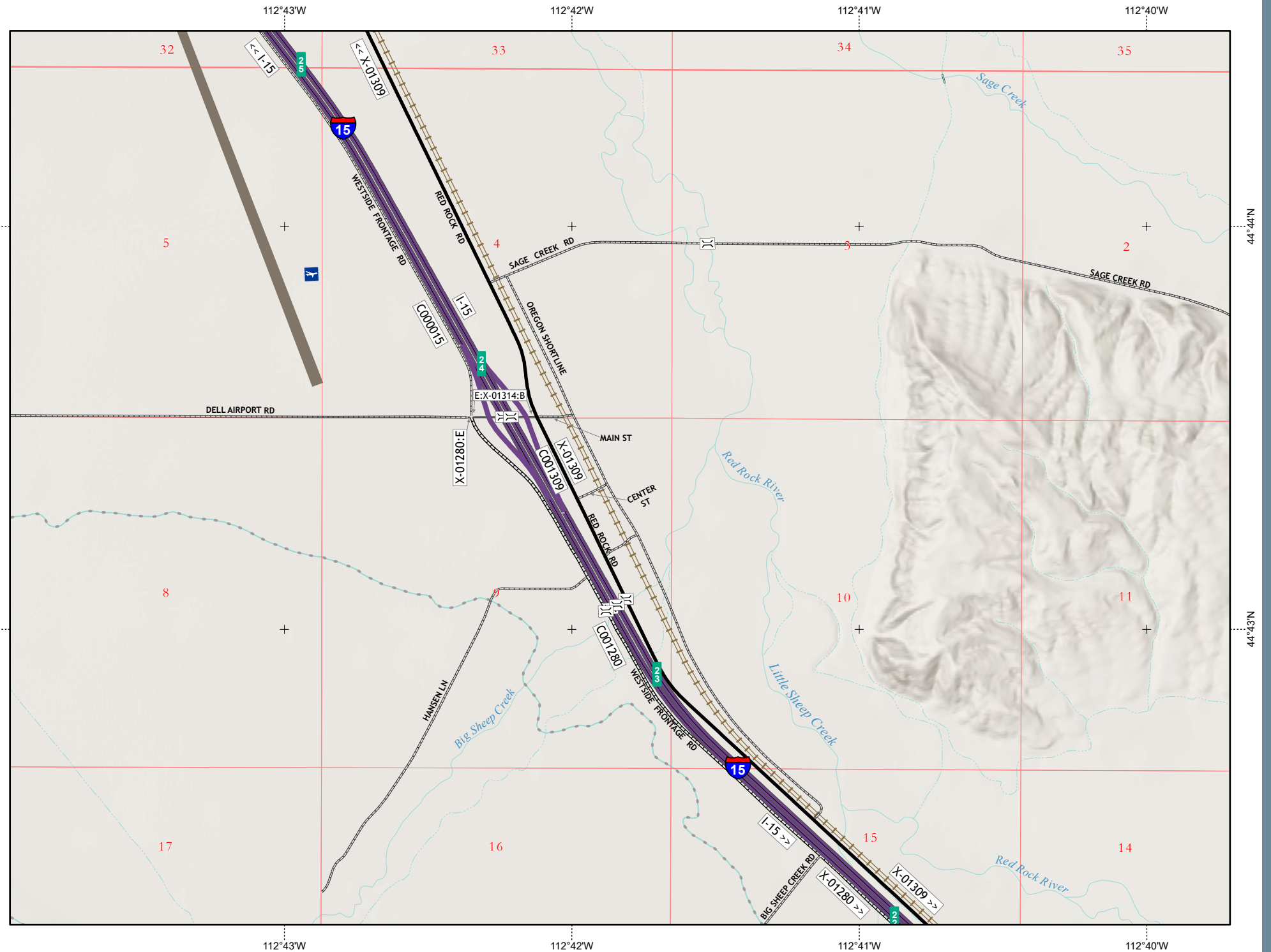
PREPARED BY THE
STATE OF MONTANA
DEPARTMENT OF TRANSPORTATION
GEOSPATIAL INFORMATION SECTION



NAD 1983 State Plane Montana FIPS 2500
Lambert Conformal Conic



COPYRIGHT © 2024 MONTANA DEPARTMENT OF TRANSPORTATION



DELL

UNINC

151