



MONTANA

Department of Transportation

August 2025

AutoCAD/Civil 3D Quick Start Guide

CIVIL 3D 2024 / STATE KIT UPDATER 2024.1.0.5

TABLE OF CONTENTS

Table of Contents	2
Overview	3
Companion Documentation	3
Civil 3D and the MDT State Kit	3
Accessing the MDT State Kit Updater	3
Installing the MDT State Kit.....	4
Launching Civil 3D with the MDT State Kit.....	7
Working with the MDT State Kit	8

OVERVIEW

The State Kit Updater is used to install and update the MDT Civil 3D State Kit content. This quick guide provides basic information on accessing and using the MDT State Kit Updater.

COMPANION DOCUMENTATION

[MDT State Kit Updater User's Guide](#)

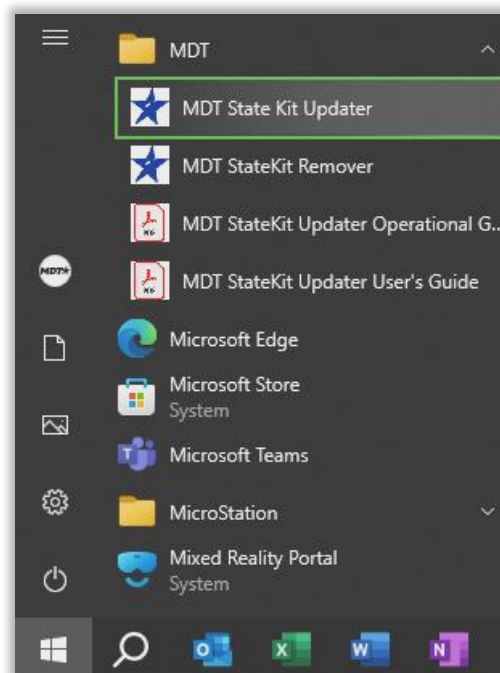
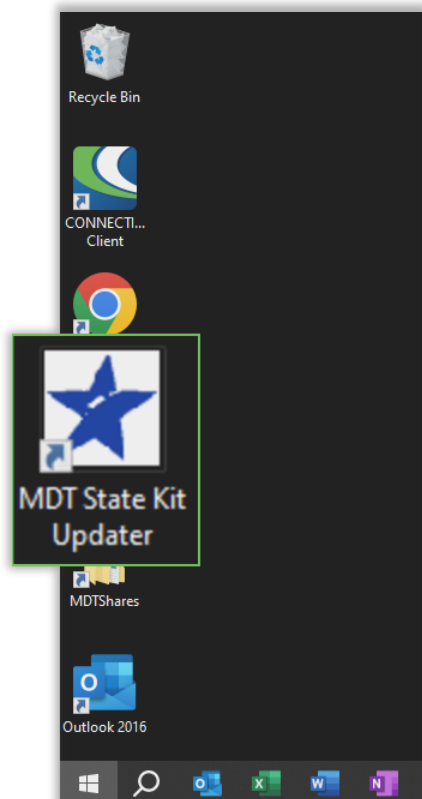
[MDT Civil 3D State Kit Overview](#)

CIVIL 3D AND THE MDT STATE KIT

ACCESSING THE MDT STATE KIT UPDATER

The MDT State Kit Updater can be found in the Start menu and on the desktop when installed.

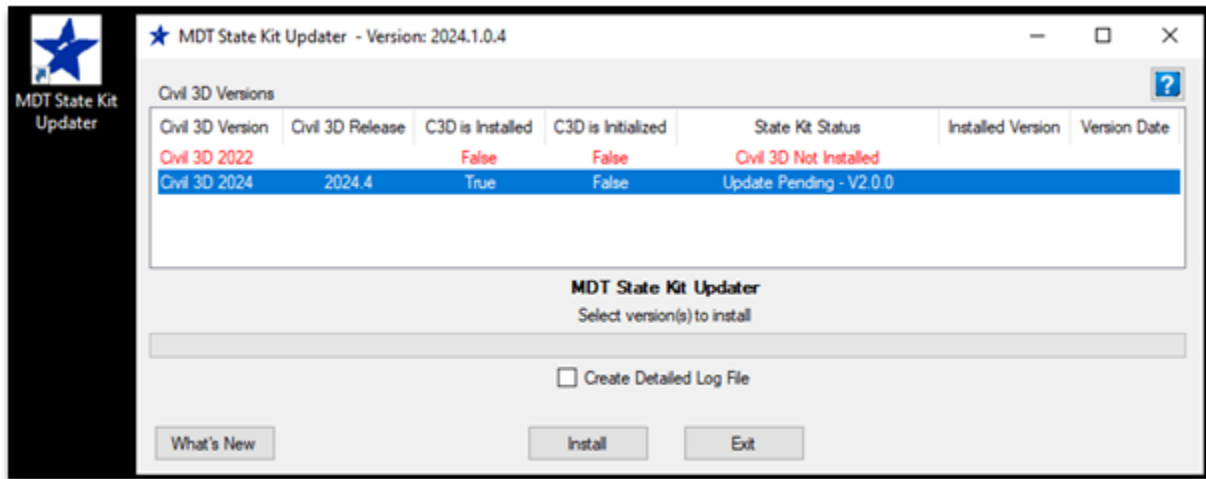
Note: External partners may download and install the MDT State Kit Updater from the [MDT Civil 3D State Kit](https://www.mdt.mt.gov/business/engops/mdt-state-kit.aspx) website - <https://www.mdt.mt.gov/business/engops/mdt-state-kit.aspx>.



INSTALLING THE MDT STATE KIT

Open the MDT State Kit Updater as follows:

1. Open the application by clicking on the MDT State Kit Updater.



The MDT State Kit Updater displays with the following information:

Civil 3D Version - version(s) of Civil3D that the Updater is looking for

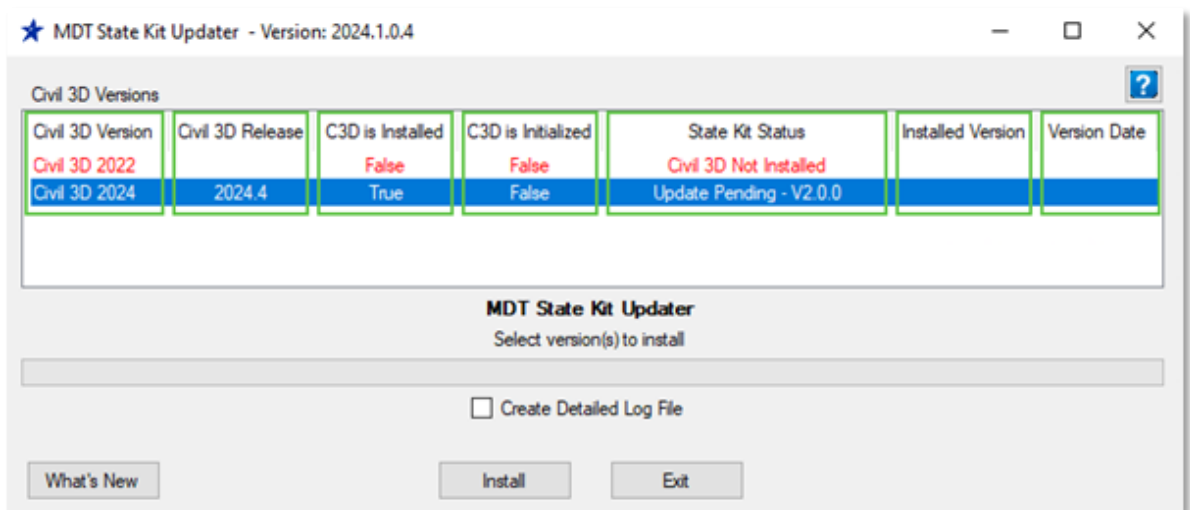
Civil 3D Release - Civil 3D version known to be compatible with the state kit release

C3D is Installed - confirmation that the version is installed

C3D is Initialized - confirmation the Civil 3D version has been initialized (run once)

State Kit Status - installation status of the state kit on the specific computer

Installed Version and **Version Date** - date and version of the installed state kit

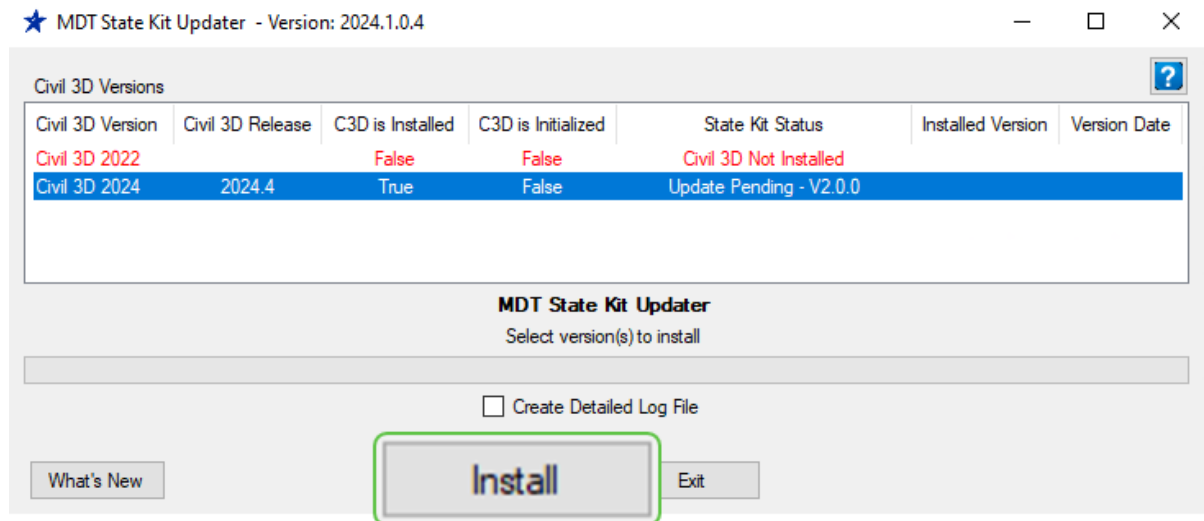


Further information can be found in the [MDT State Kit Updater User's Guide](#).

If the “State Kit Status” shows “Update Pending”, a State Kit update is available to be installed.

Install the MDT State Kit as follows:

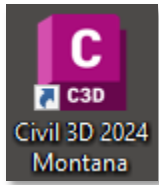
1. From the MDT State Kit Updater tool dialog, select “Install”.



During State Kit installation, Storm and Sanitary Analysis software may be launched if not previously initialized. It will launch, remain open for a moment, and close on it's own.



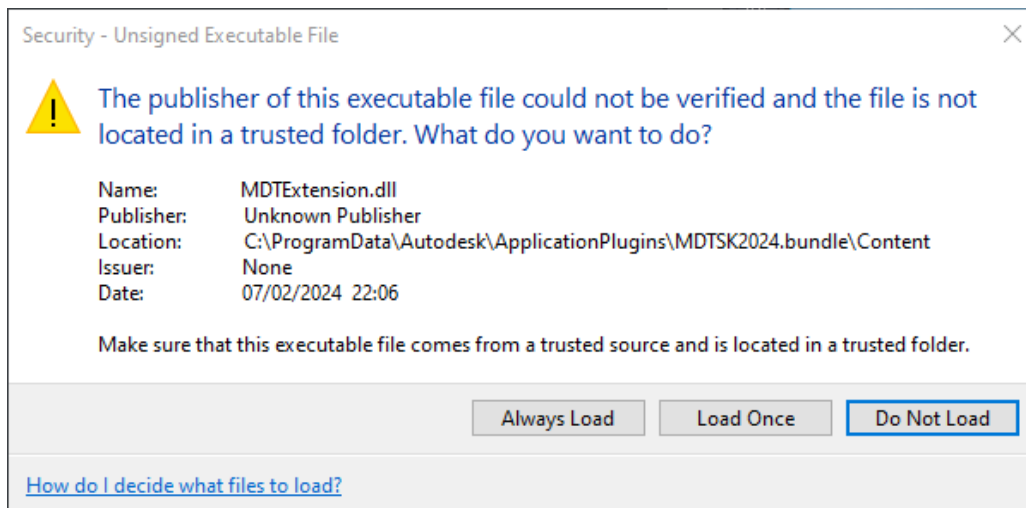
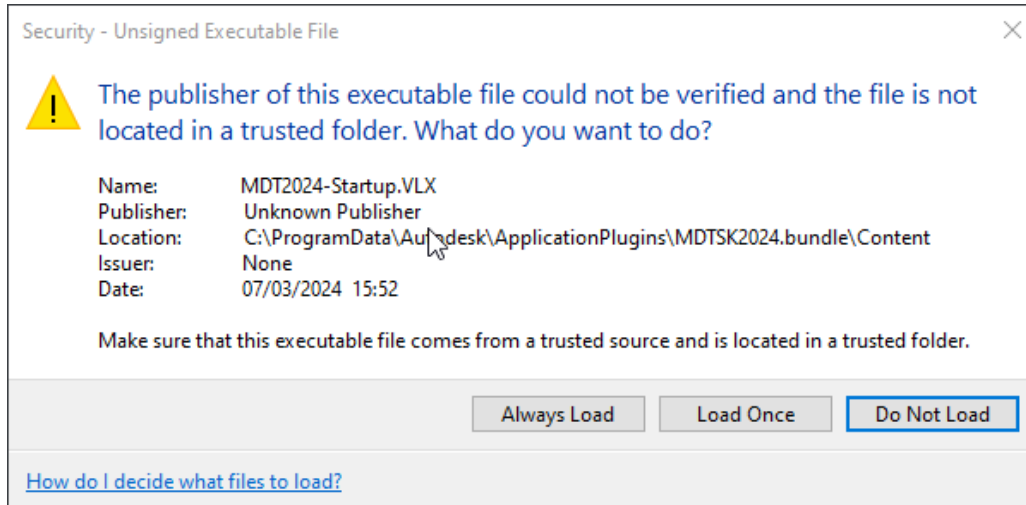
Once the State Kit is installed, a new “Civil 3D 2024 Montana” desktop icon will be created. Use this shortcut to launch Civil 3D.



LAUNCHING CIVIL 3D WITH THE MDT STATE KIT

Civil 3D will need to be opened using the “Civil 3D 2024 Montana” desktop icon.

After Civil 3D is launched and a new file is created, two security boxes will display. Select “Always Load” for each.



WORKING WITH THE MDT STATE KIT

The [MDT Civil 3D State Kit Overview](#) can be accessed within Civil 3D on the ribbon from the MDT Design tab (or MDT Tools) > MDT Info > MDT State Kit Docs.

