

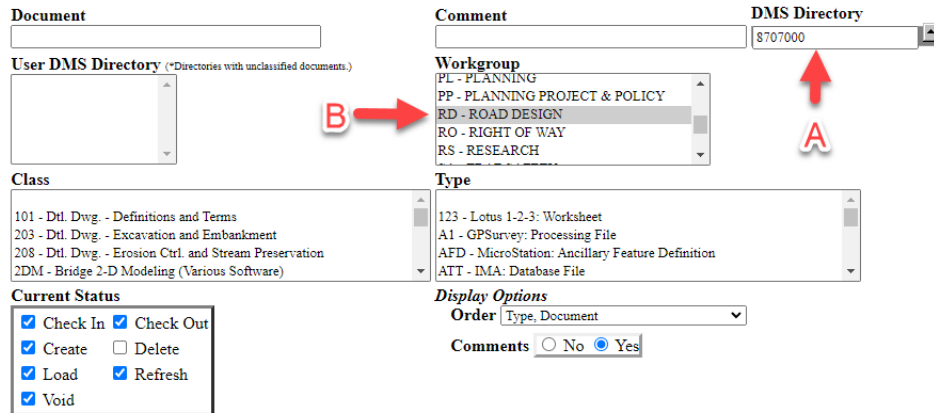
Exporting corridor lines as .dxf files and import into Trimble Business Center

- Using DMS, navigate to the file you want to use.

A: Enter UPN in DMS Directory

B: Select Road Design Workgroup

C: Click search folder

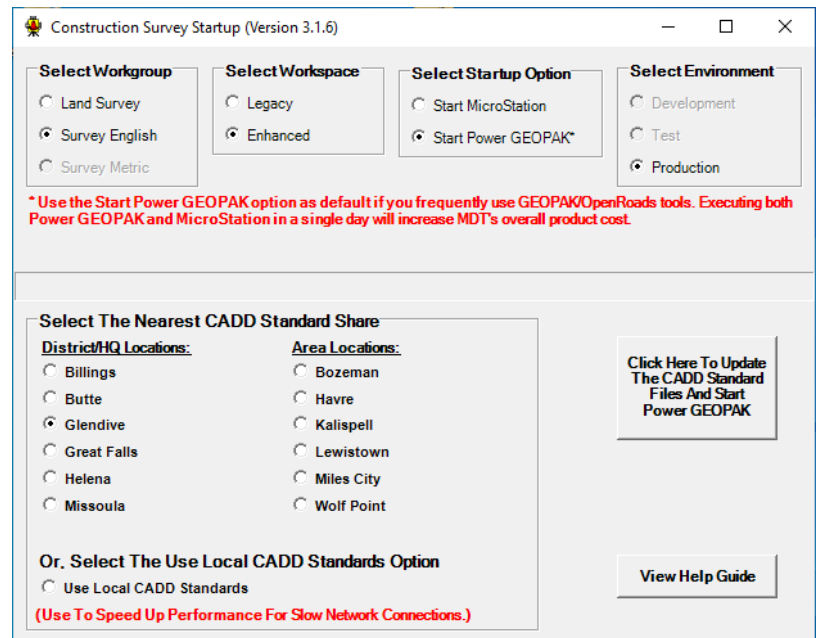


- Navigate to the Corridor file you want to use: ex. 8707000RDCRR005.DGN
- Click the radio button to view to the file and click process request button on bottom of screen.

8707000RDCRR005.DGN	<input type="radio"/> None <input checked="" type="radio"/> View <input type="radio"/> Yes <input type="radio"/> No	<input type="radio"/> None <input type="radio"/> Document <input type="radio"/> Reference(s) <input type="radio"/> All Documents	8707000 RD Checked In on 10/26/2021 08:53:50 AM by Shane Jarvis(U0425)
4,254.5 kb			Corridors File MicroStation: Design File
8707000RDCRR006.DGN	<input type="radio"/> None <input type="radio"/> View <input checked="" type="radio"/> Yes <input type="radio"/> No	<input type="radio"/> None <input type="radio"/> Document <input type="radio"/> Reference(s) <input type="radio"/> All Documents	8707000 RD Checked In on 10/26/2021 08:53:51 AM by Shane Jarvis(U0425)
2,139.5 kb			Corridors File MicroStation: Design File APPROACHES
8707000RDCRR007.DGN	<input type="radio"/> None <input type="radio"/> View <input checked="" type="radio"/> Yes <input type="radio"/> No	<input type="radio"/> None <input type="radio"/> Document	8707000 RD Checked In on 10/26/2021 08:53:51 AM by Shane Jarvis(U0425)
			Corridors File MicroStation: Design File



- Open Construction Survey Startup from Icon on the desktop.
- Ensure the correct radial buttons are selected. You will have to choose Legacy or Enhanced based on which workspace the job was created in. Projects in design prior to 2019 were in Legacy workspace.



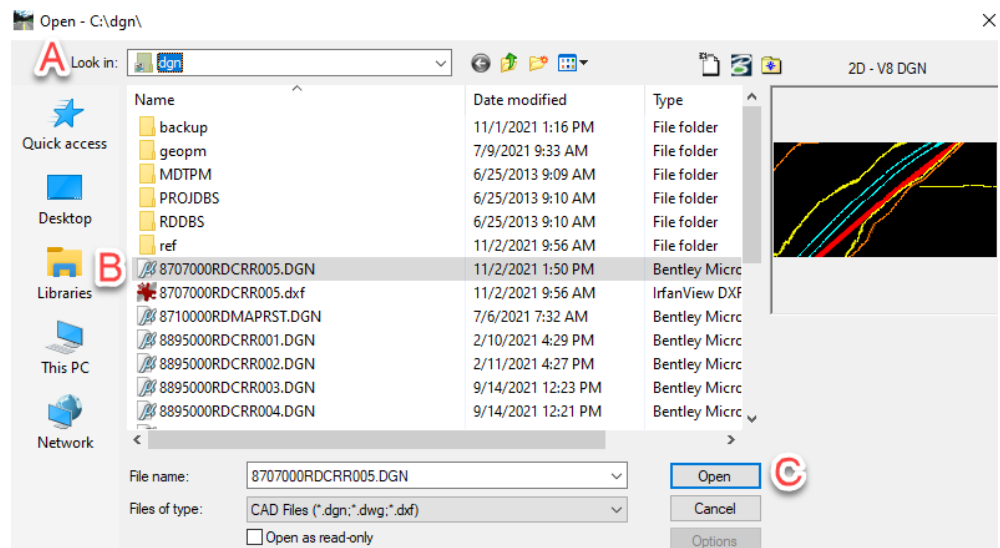
- Click to start Power GEOPAK

- In GEOPAK, click on file, open.
- In the open command popup window:

A: Navigate to this PC, click on local disk (C:), click on dgn folder.

B: Find the file you downloaded from DMS ex. 8707000RDCRR005.DGN

C: Click Open

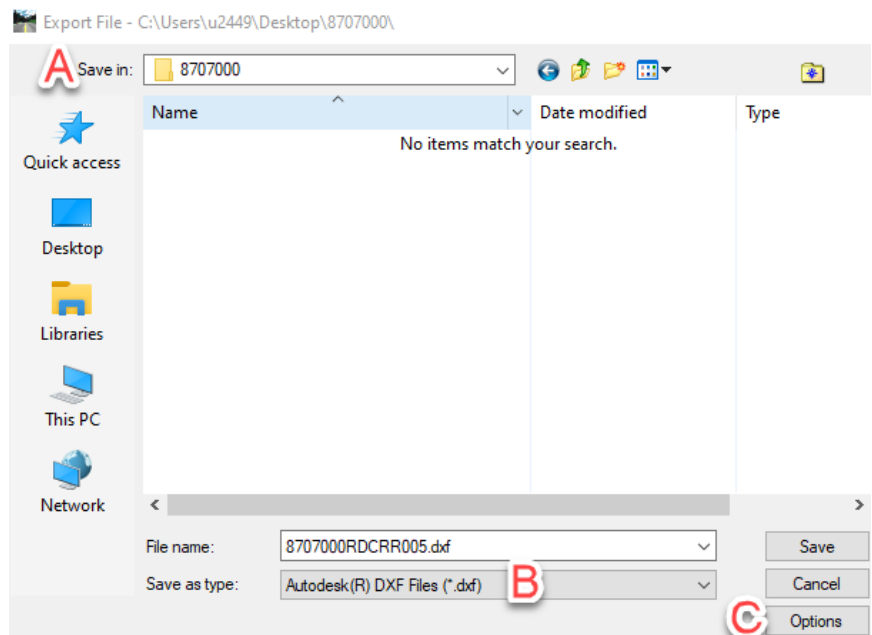


- In GEOPAK, click file, click export, click DGN, DWG, DXF
- In popup window, ensure you set the following items:

A: Select where you want to save

B: Choose DXF file type

C: Click Options



In the options window click as shown:

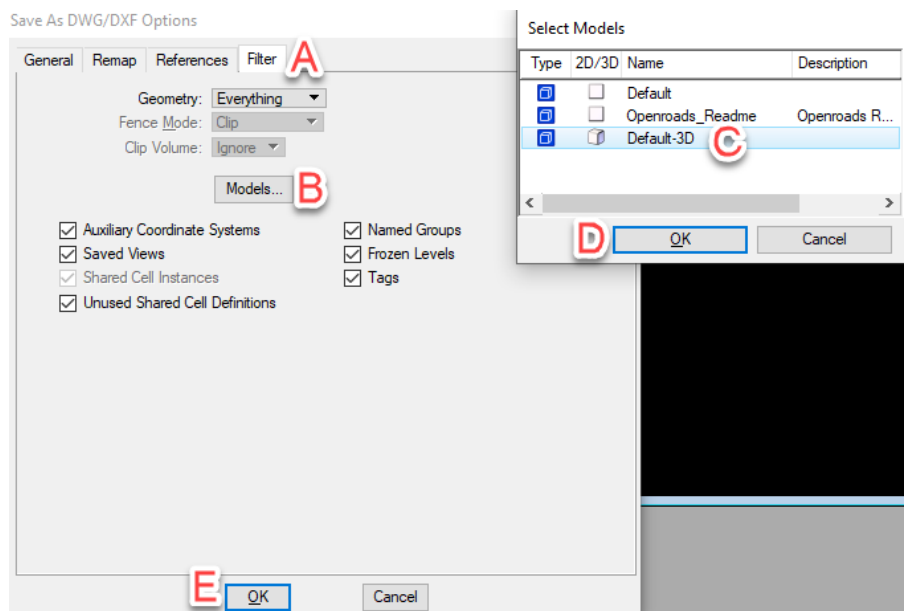
A: Click Filter tab

B: Click Models button

C: Click Default-3D in models

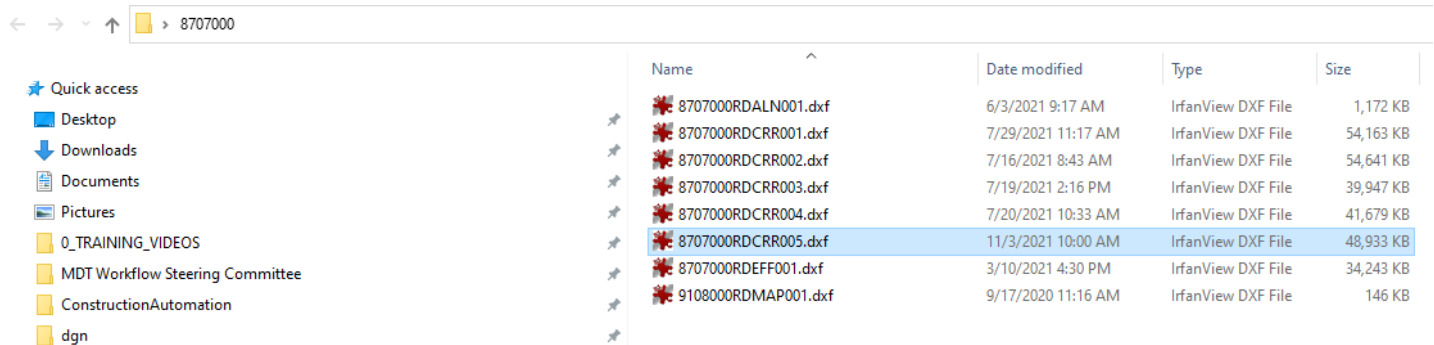
D: Click OK on models popup

E: Click ok to close options



- Click Save in export file window. Files will now be saved to the specified folder. Ex. 8707000

- Open Trimble Business Center (TBC)
- Click New Project
- Open TBC Template that matches the Datum and Geoid for the project. Ex. MDT IFT 2011 (ITRF to NAD83) GEOID 12A
- In file explorer, navigate to saved folder. Ex. 8707000
- Click on file you want to import. Ex. 8707000RDCRR005.dxf



- Drag and drop the selected file into TBC.