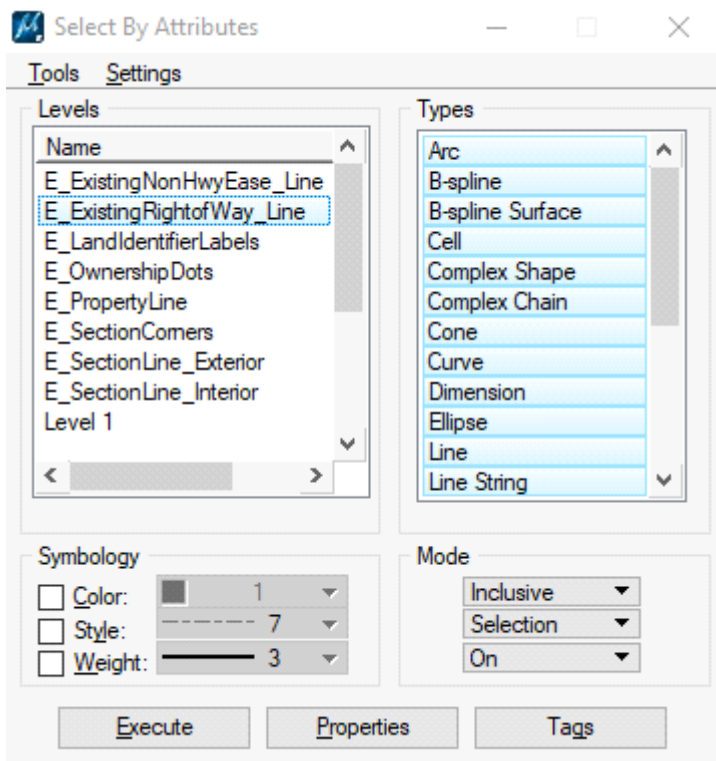


## R/W BASELINE IN OPENROADS

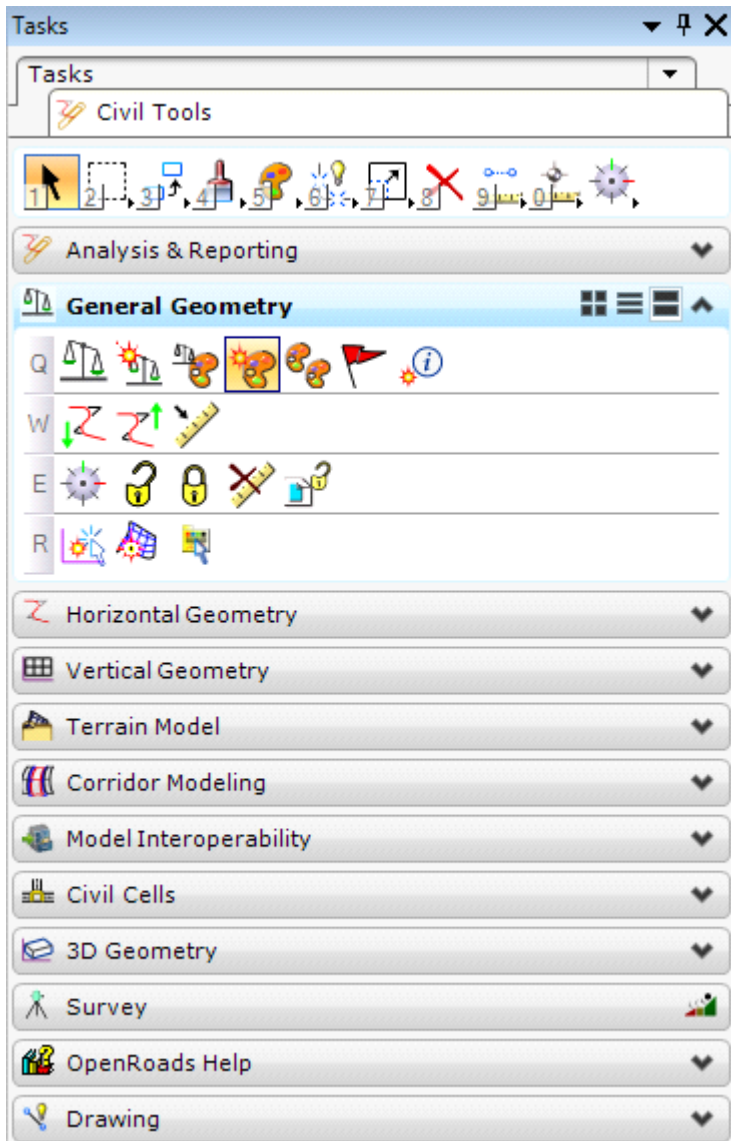
Up to this point the right of way strip map is created following the process for legacy projects. If the existing right of way has not been featurized it should be done before the right of way baseline is created.

### FEATURIZING EXISTING RIGHT OF WAY

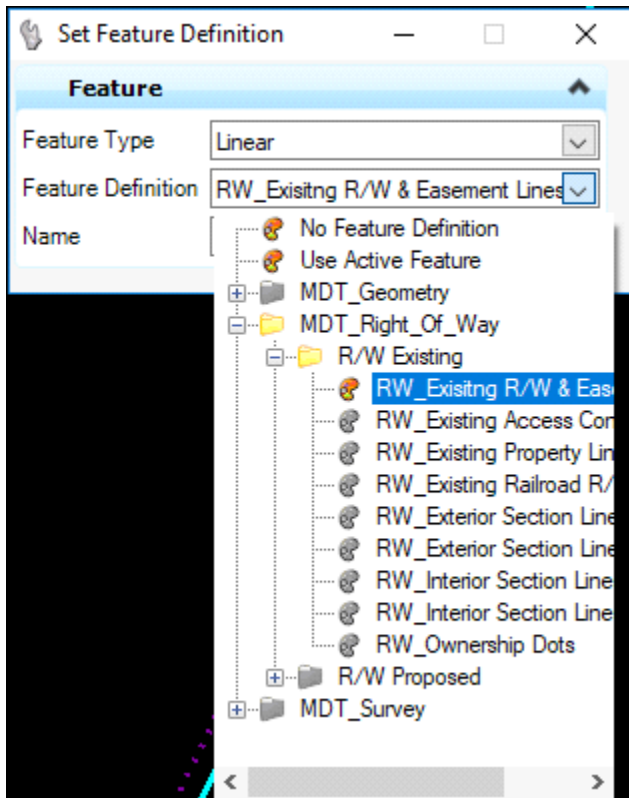
In the ROMAP file go to Edit and Select By Attributes. Under Levels select E\_ExistingRightofWay\_Line. In the right hand column make sure all Types are highlighted and hit Execute.



Under Tasks go to Civil Tools\General Geometry\Set Feature Definition



Set the Feature Type to Linear and the Feature Definition to RW\_Existing R/W & Easement Lines under MDT\_Right\_of\_Way\R/W Existing. Left click to accept.



Follow the same process for existing railroad right of way lines and set the Feature Definition to RW\_Existing Railroad R/W Lines.

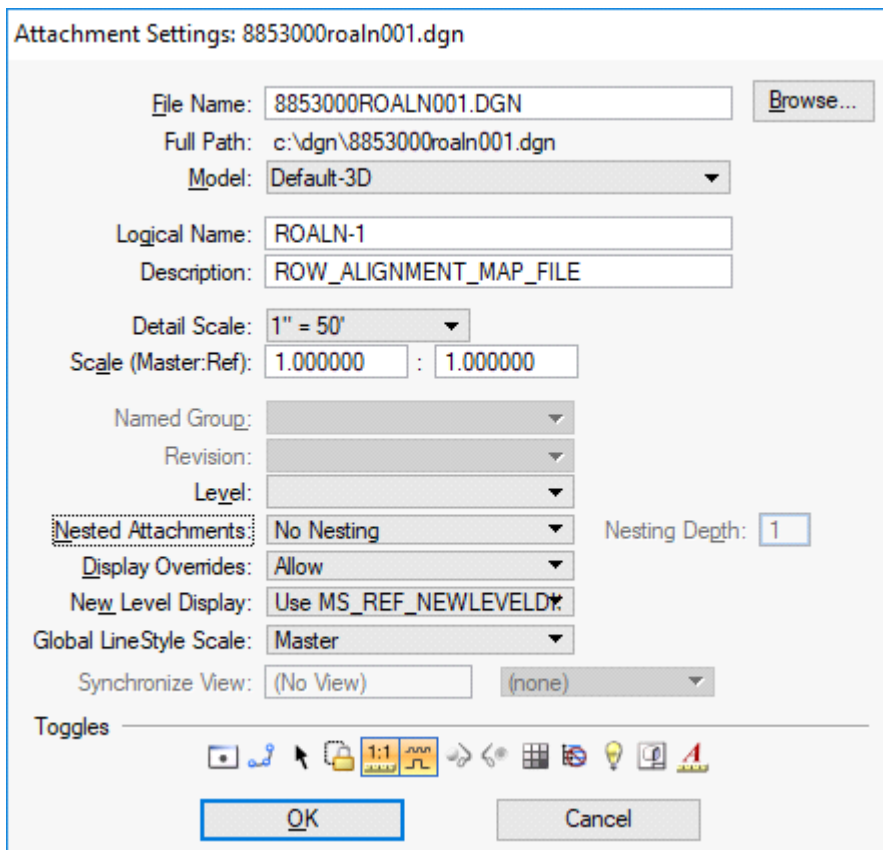
#### RIGHT OF WAY ALIGNMENT FILE

A right of way design ALN file is created for proposed elements/linework that will be featurized and added to the 3D Model. Proposed right of way, easement and construction permit lines are placed in the ALN file. Placing proposed featurized elements/linework in the ALN file allows right of way design to maintain a work flow similar to legacy projects. The ALN file will need to be referenced into the Plan and Exhibit files. Draping is the process of taking lines drawn in 2D and placing them on top of the TIN. The draping of featurized elements is right of way design's contribution to the 3D model.

#### CREATING THE RIGHT OF WAY ALIGNMENT FILE

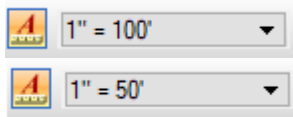
Download the RDALN file (XXXX000RDALN001.DGN) and gpk file. Open the RDALN file with Right of Way OpenRoads. Under File select Save As and name the file as ROALN (XXXX000ROALN001.DGN). Alignment information is contained within the ALN file and this essentially creates a copy of the gpk file. The gpk file downloaded from DMS will need to be placed in the RO directory on DMS.

Within XXXX000ROALN001.DGN turn off the display for RDEFF and RDETR reference files. Under MDT APPS select REF Check to change the Logical Name and Description for XXXX0000ROALN.DGN. If the macro does not work the Logical Name and Description can be changed by hand.



Attach the ROMAP file and CRR file(s), Orientation is Coincident - World and Nested Attachments is set to No Nesting. In the CRR files turn on the construction limits which should be on levels TL\_EC Fill Limit and TL\_EC Cut Limit. The construction limits in the CRR files and the alignment, stationing and curve data on levels P\_Alignment\_Design\_Chains, P\_Alignment\_Design\_Stationing and P\_Alignment\_Design\_CurveData in the ROALN file are the only elements that should be displayed.

Turn the Annotation Scale on and set the annotation scale to the plan and profile sheet scale. (rural scale is 1"=100', urban scale is 1"=50') The Annotation Scale is in the Settings menu under Drawing Scale.



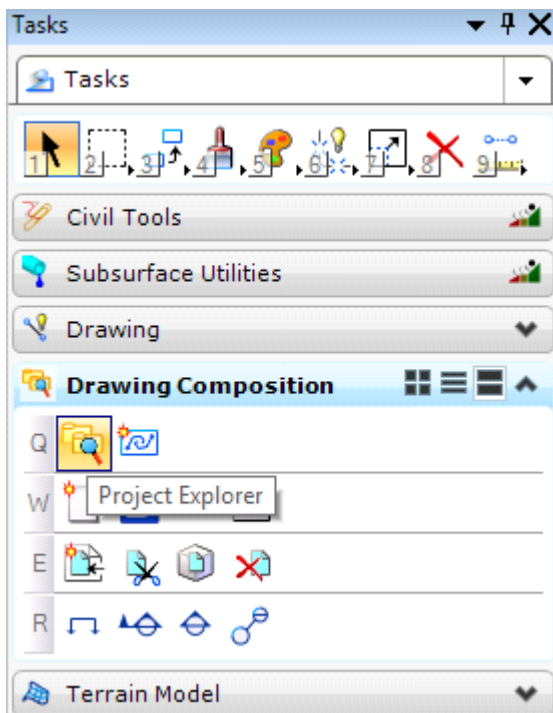
Select the mainline alignment, hover over it and select Properties.



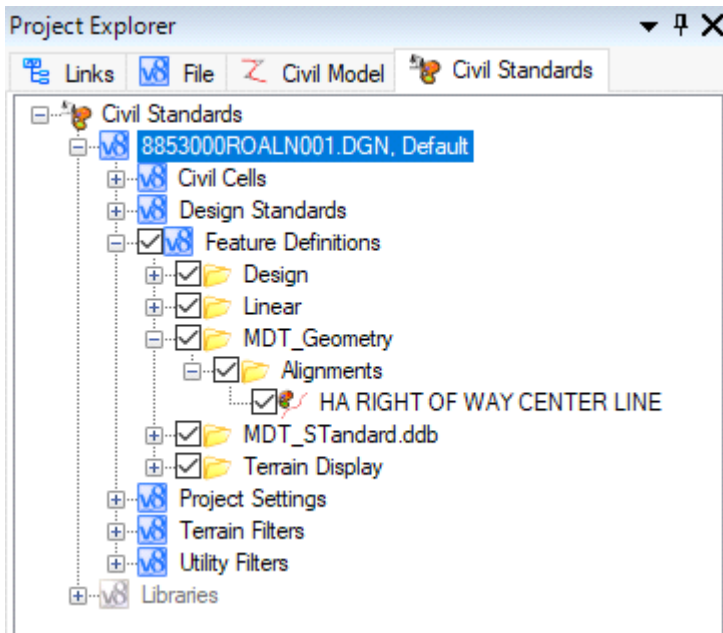
Change the Feature Name to RWBL. Change the Feature Definition to HA RIGHT OF WAY CENTER LINE by clicking the down arrow and navigating to MDT\_Geometry\Alignments\HA RIGHT OF WAY CENTER LINE.

Start Point	1334789.7316, 1223866.64
End Point	1335591.5208, 1224394.64
Length	960.0000
Feature Name	RWBL
Feature Definition	HA RIGHT OF WAY CENT
Curve Stroking	0.1000
Profile Stroking	0.1000
Stroking Step Method	Increment
Linear Stroking	10.0000
Export Name	RDCL
Job Number	job853.gpk

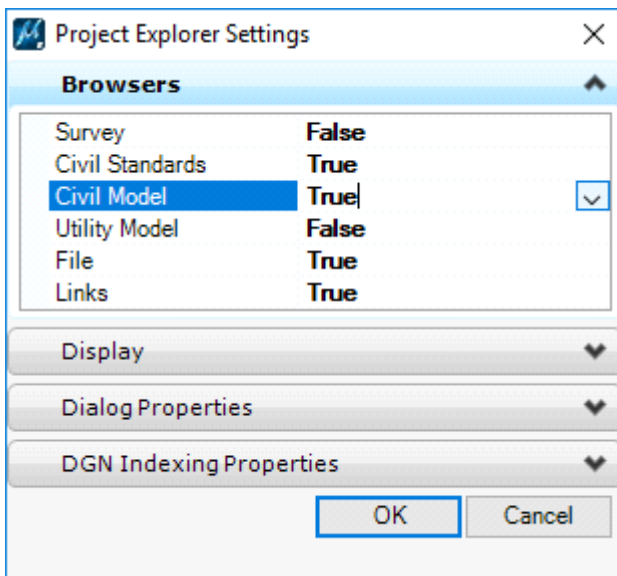
Under Drawing Composition in the Tasks menu select Project Explorer. You can also select Project Explorer from the Primary Tools bar.



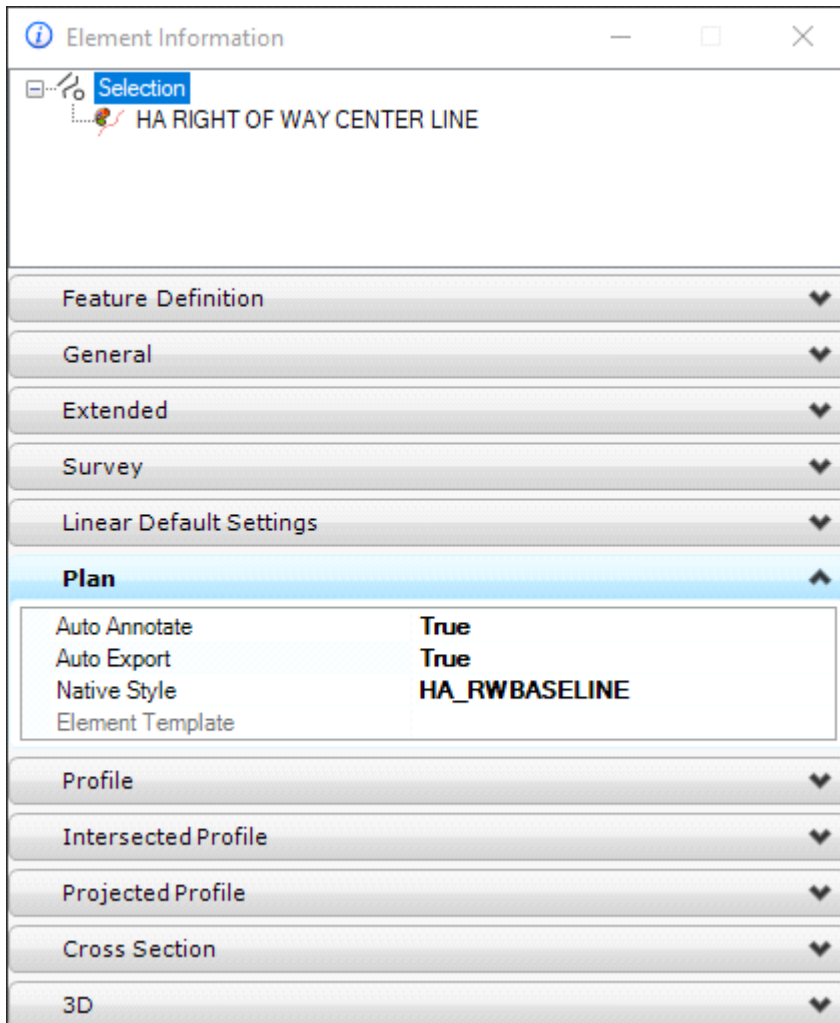
Under the Civil Standards tab click on the design file (XXXX000ROALN001), select Feature Definitions \MDT\_Geometry\Alignments. Right click on HA RIGHT OF WAY CENTER LINE and select Properties.



If these options are not available when you click on the design file right click on Project Explorer in the Primary Tools bar, go to settings and change Civil Standards and Civil Model to true.

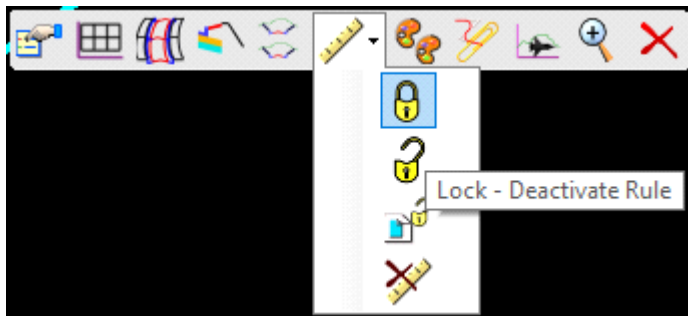


Under Plan change Auto Annotate and Auto Export to True. Setting these to auto export causes alignment features to be exported to the gpk file.



These settings will be automatic for additional right of way baselines that are created in this ROALN file.

In the Level Display turn off the road design levels. Select the right of way baseline, hover over it and under Rules select Lock. This locks the right of way baseline so it cannot be moved.



With the use of Civil Tools the proposed right of way is tied to the right of way baseline. **If the right of way baseline is created before alignment and grade this process may need to be repeated after final construction limits.**

Attach the ROMAP file and RDCRR file(s). Place the right of way alignment file (XXXX000ROALN001.DGN) and .gpk file on DMS.