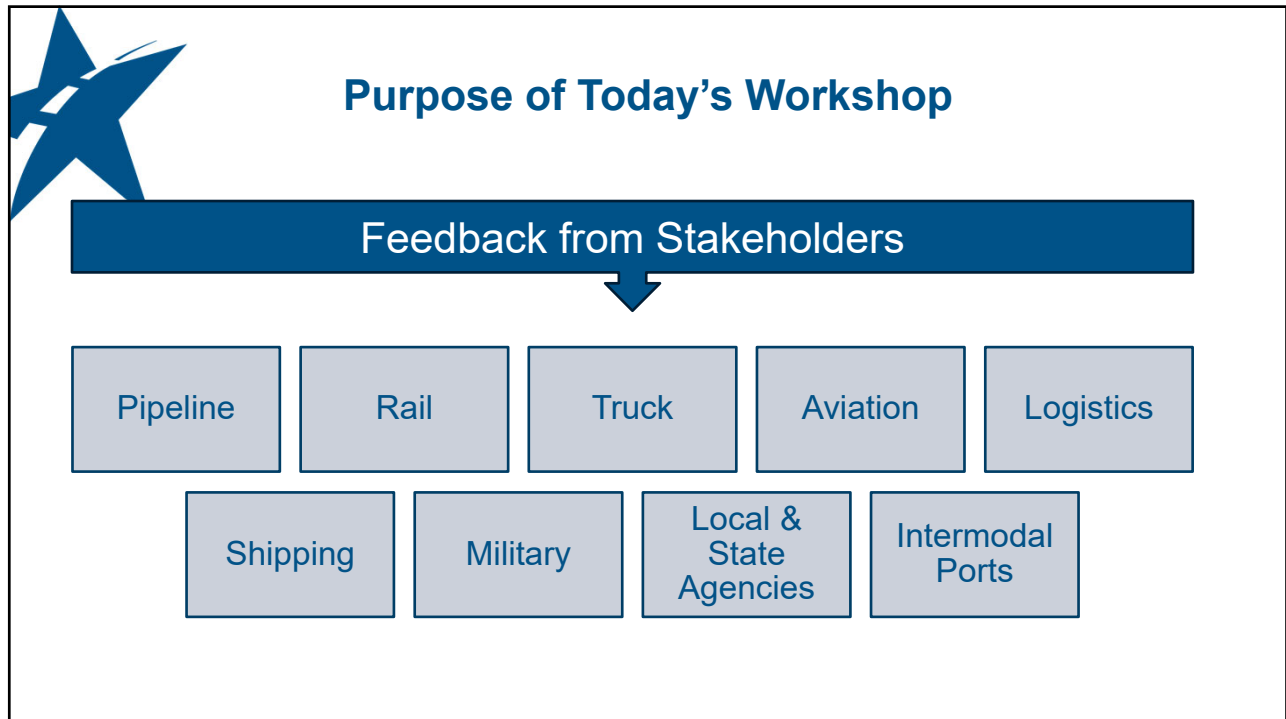


# 2026 Freight Plan Stakeholder Workshop

Presenters:  
Heather Kuklo, MDT Transportation Planner  
Tim Sueltenfuss, Galen Driscoll  
Estela Fuentes, Galen Driscoll  
September 24, 2025



1



2



## National Policy Regarding Freight

### National Multimodal Freight Network Goals

- Improve **safety, security, efficiency, and resiliency**
  - Maintain a **state of good repair**
- Improve **economic efficiency and productivity**
  - Improve **reliability** of freight transportation



**Plan & Prioritize  
Investments**

3



## State Policy Regarding Freight

**MDT's Mission:** to plan, build, operate, and maintain a **safe** and **resilient** transportation system to move Montana forward.

Broad  
Statewide  
Policies



20-Year  
Forecast



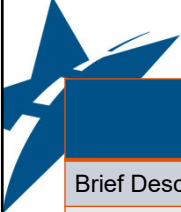
Specific  
Focus on  
Freight



**Montana  
Freight Plan**


8 -Year  
Forecast

4



<b>Freight Plan Purpose</b>	
	Brief Description of Montana's economy, in relation to freight and economic demand
	Details freight movements by mode
	Identifies significant freight system concerns and needs in Montana and strategies for improvement
	Identifies mechanisms to ensure reliability and redundancy within the transportation network
	Addresses the impacts of freight on the environment
	Includes a Freight Investment Plan that must be fiscally constrained
	Informs the public and stakeholders as to how MDT manages the transportation system specifically related to freight
	On a four-year update schedule and requires FHWA approval

5



<b>Montana Freight Plan Goals</b>	
<b>Safety</b>	Improve safety for freight operators and the traveling public.
<b>System Preservation &amp; Maintenance</b>	Preserve and maintain existing transportation infrastructure, thereby ensuring infrastructure resiliency and the efficient movement of freight.
<b>System Reliability</b>	Provide efficient, cost-effective management, and operation to accelerate transportation project delivery and ensure system reliability.
<b>Environmental Stewardship</b>	Support MDT's transportation mission through responsible stewardship of the built and natural environment.
<b>Network Resiliency</b>	Support programs and efforts that promote network resiliency in response to the effects of extreme weather and natural phenomenon.

6



## Key Program Tied to Freight Plans

### National Highway Freight Program

- Federal funds apportioned to states (MDT) by formula
- Montana receives ~\$15M annually
- Eligible activities include but are not limited to:
  - Projects that benefit the safe and efficient movement of freight on Montana's interstates, including construction and operational improvements

**No State Freight Plan = No freight formula \$**

7



## Stakeholder Role in Freight Plan Development

Provide your feedback and ideas!

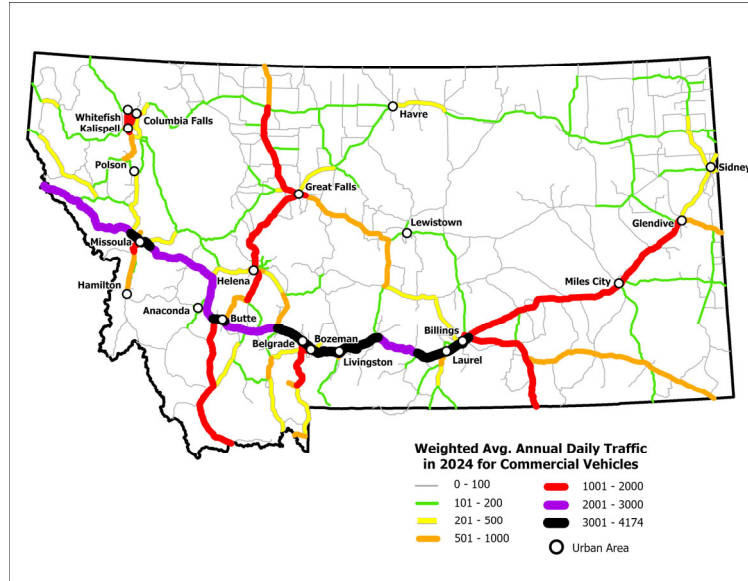
- Critical **issues** and **needs**
- Anticipated **trends**
- Potential **solutions** and **strategies**
- Important **facilities** and **corridors**
- Known **barriers** and **bottlenecks**

MDT considers stakeholder feedback during plan development

8



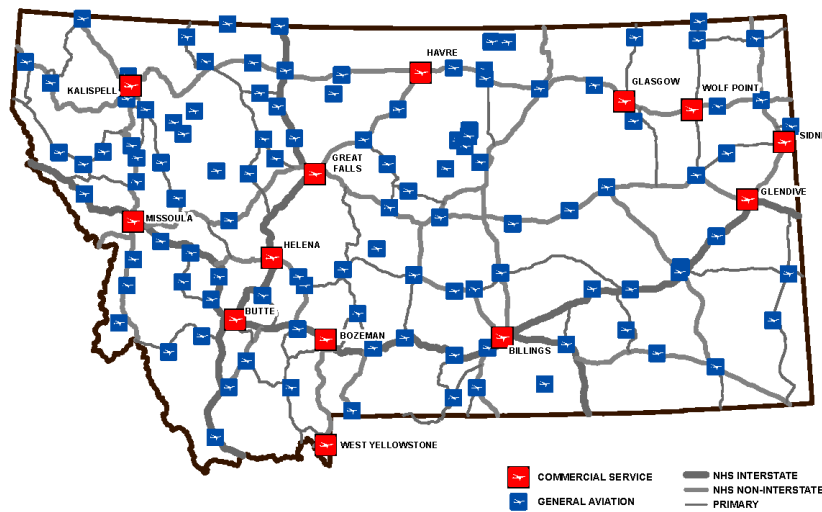
## Montana Commercial Truck Traffic



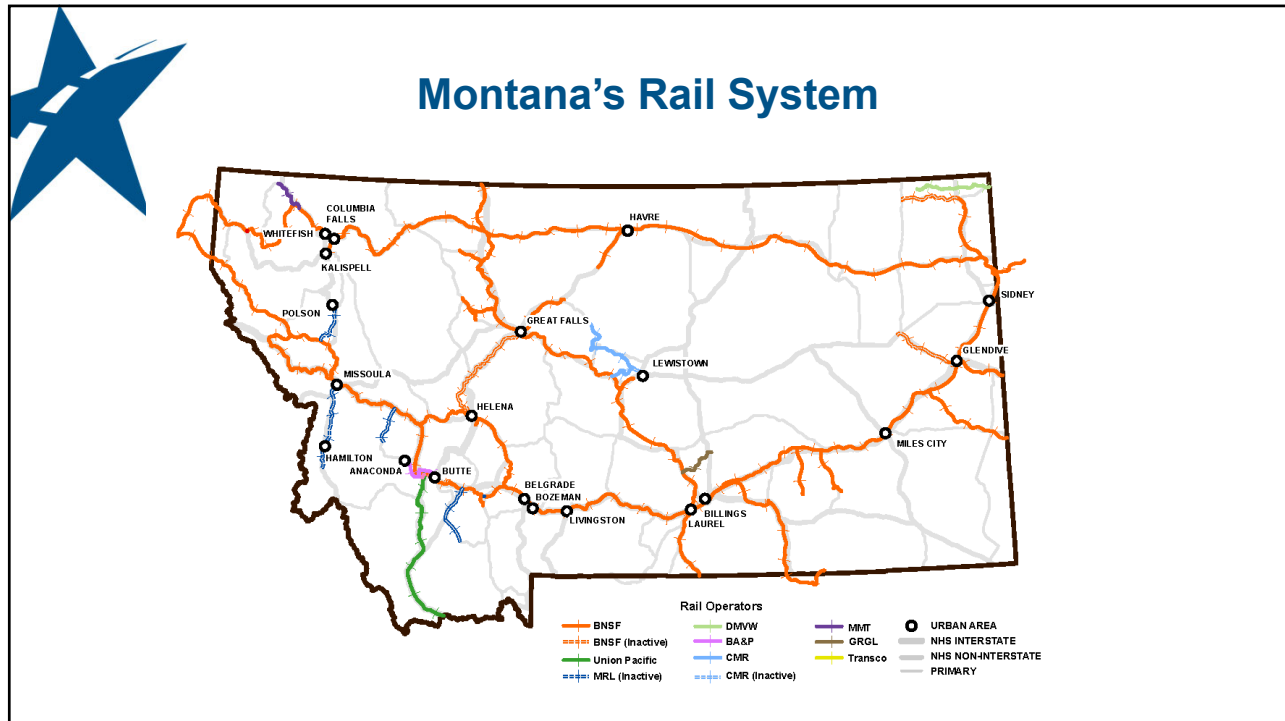
9



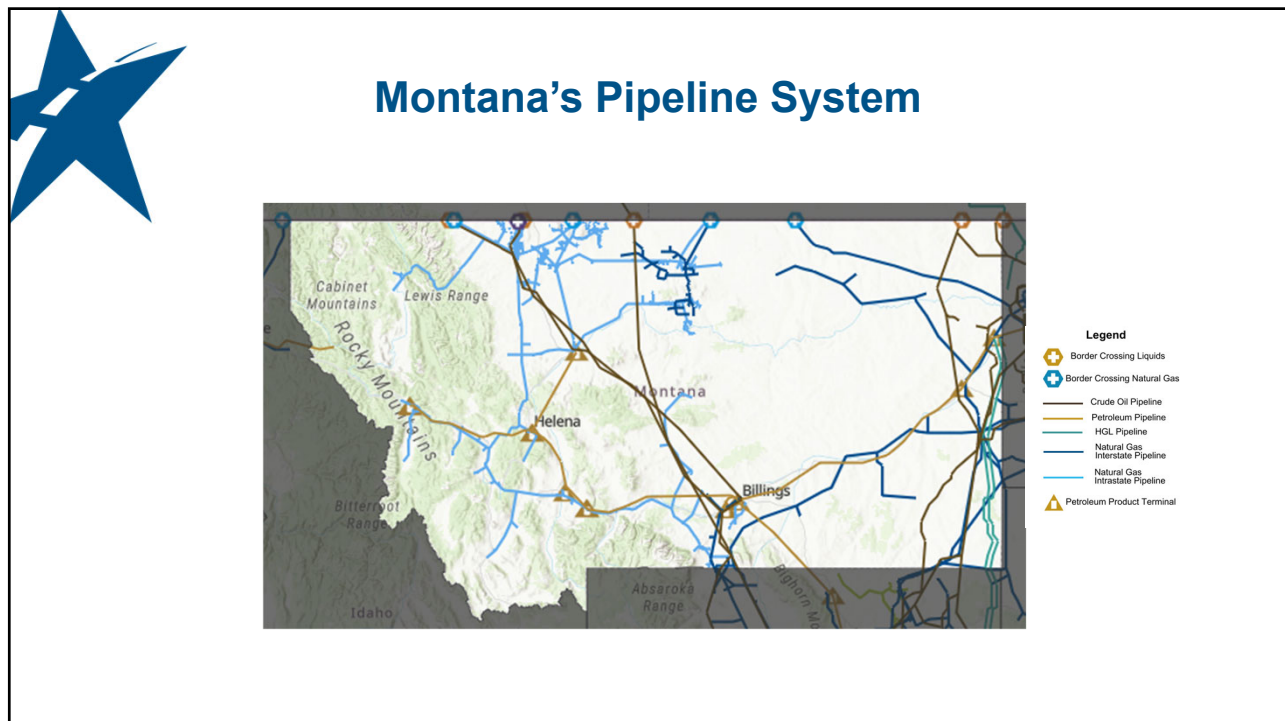
## Air Service Locations



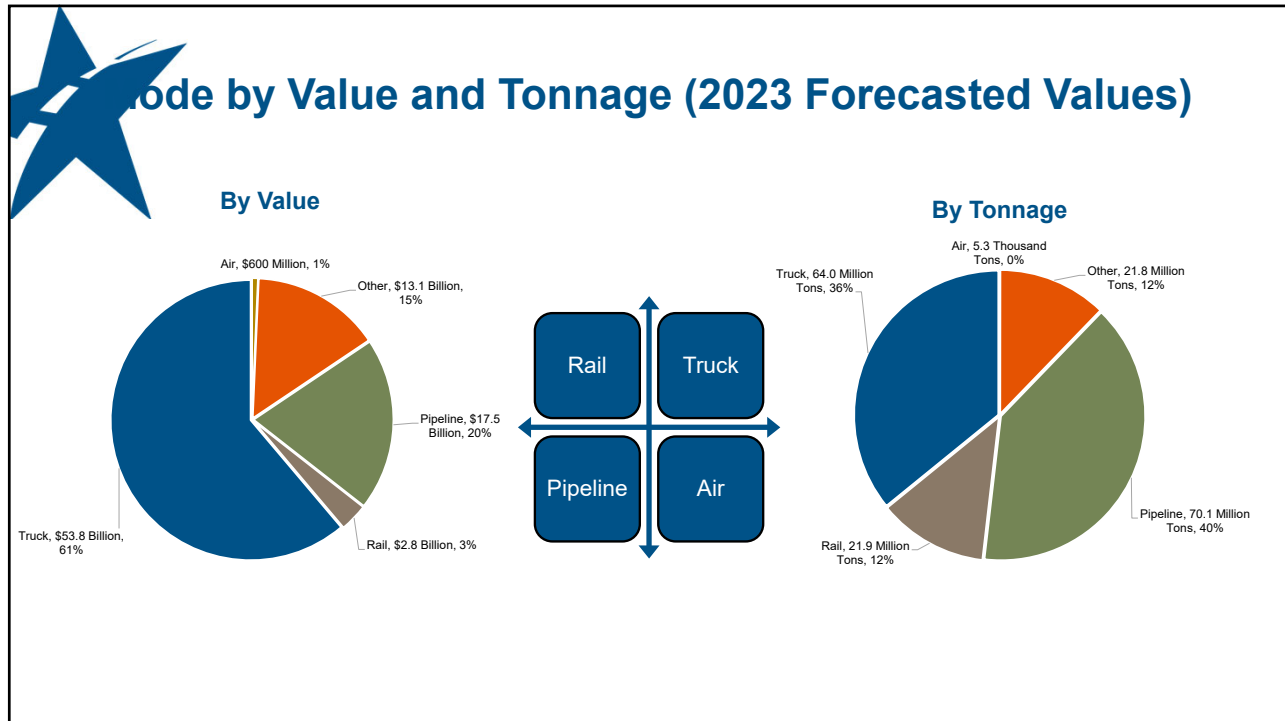
10



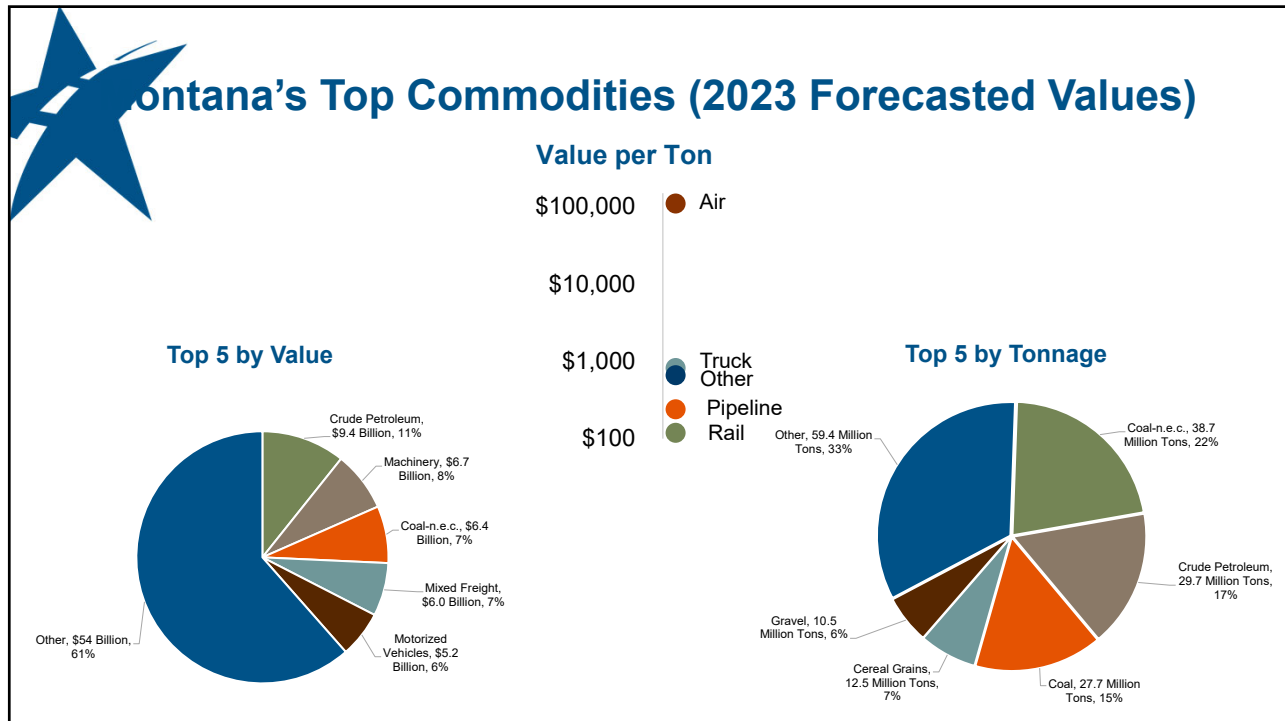
11



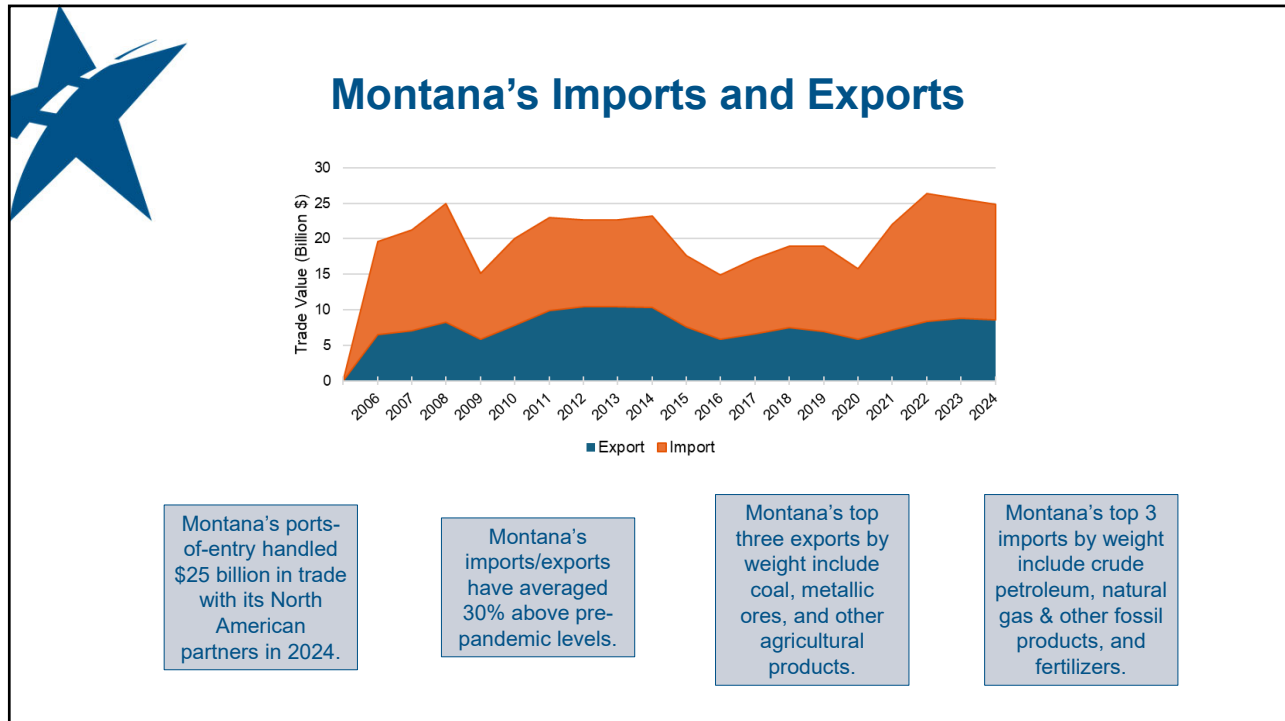
12



13



14



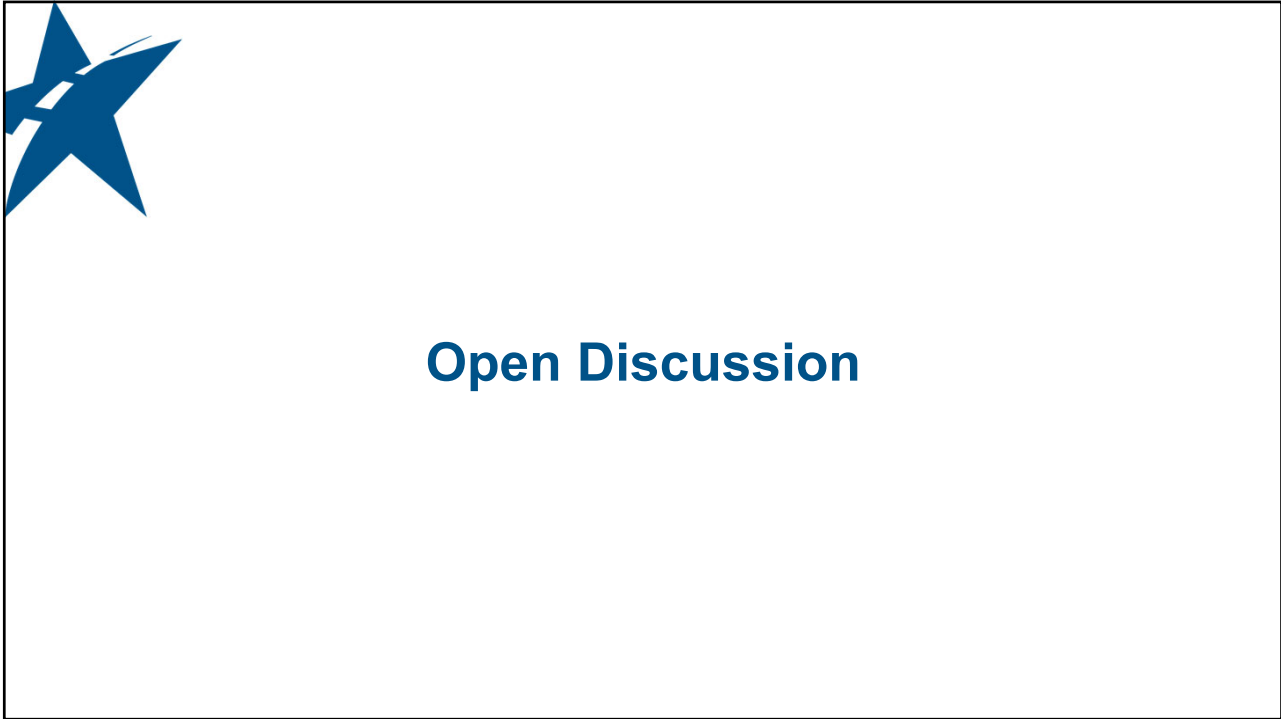
15

### Freight Plan Identified Needs and Concerns

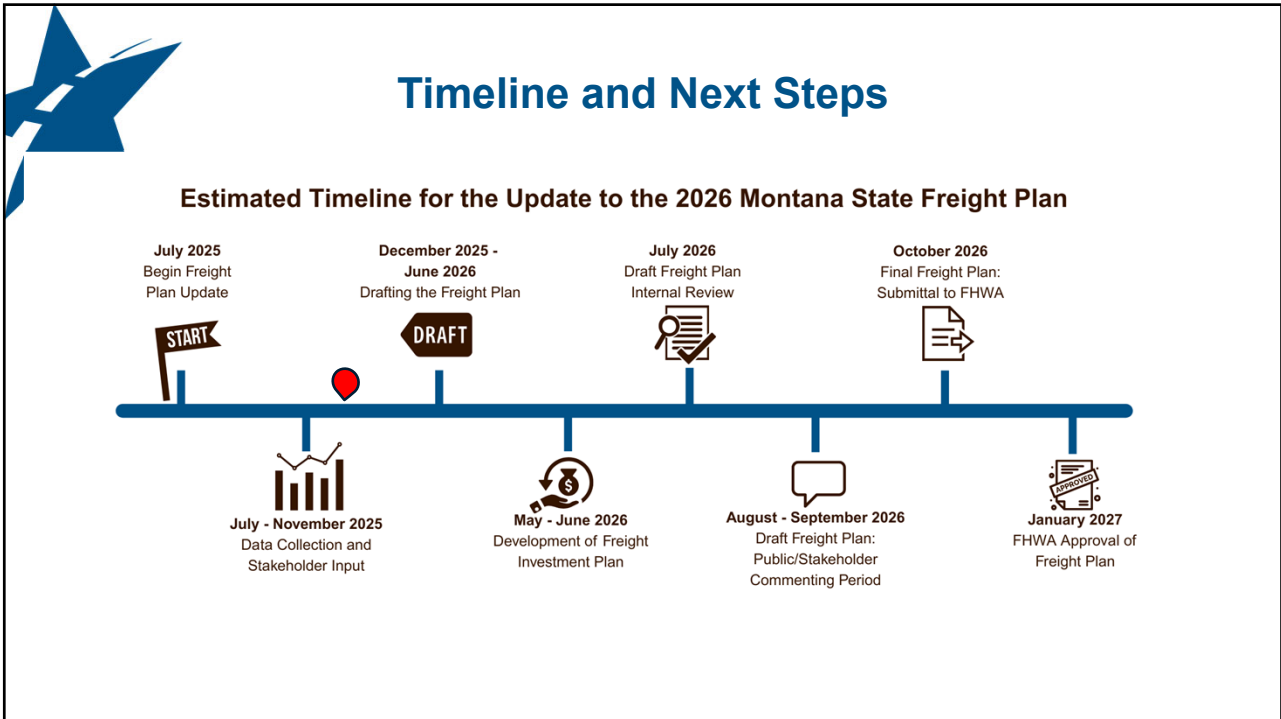
Infrastructure Condition	CMV Safety	Funding	New Concerns?
<ul style="list-style-type: none"> <li>Functionally outdated bridges</li> <li>Vehicular delay</li> <li>Network reliability</li> <li>Network mobility</li> </ul>	<ul style="list-style-type: none"> <li>Crashes</li> <li>Adverse weather</li> <li>Mountain passes</li> <li>Driver qualifications</li> <li>Lack of Rest areas</li> </ul>	<ul style="list-style-type: none"> <li>Increased construction costs</li> <li>Inflation</li> <li>Limited funding for maintenance on certain roadways</li> </ul>	<ul style="list-style-type: none"> <li>Program inefficiencies</li> <li>State/federal policies</li> <li>Lack of Coordination</li> <li>Regulatory challenges</li> <li>Autonomous vehicles</li> <li>AI</li> <li>Evolving freight trends</li> <li>Workforce shortages</li> <li>??</li> </ul>

16





17



18



**Thank you!**

*Questions or Comments:*

Heather Kuklo  
(406) 444-3439  
[hkuklo@mt.gov](mailto:hkuklo@mt.gov)  
<https://mdt.mt.gov/freightplan/>

Take our Freight Survey and win our eternal gratitude!

