

**COLUMBUS AIRPORT**

Branch: 59A      **APRON**      **A-1**

**Length:** 365 LF    **Width:** 216 LF    **Area:** 77,012 SF    **Last Const:** 1998    **Family:** ACAM  
**From:** ENTIRE APRON    **To:**    **Surface:** AC

**Inspections**

**Samples Surveyed:** 5      **Total Samples:** 16      **Last Inspection Date:** 8/29/2012      **PCI:** 68

**Sample # 2**      **Area:** 4,968 SF

Distress Description	Severity	Quantity
LONGITUDINAL/TRANSVERSE CRACKING	L	110 LF
LONGITUDINAL/TRANSVERSE CRACKING	M	79 LF
PATCHING	L	35 SF
WEATHERING	L	4,471 SF
WEATHERING	M	497 SF

**Sample # 5**      **Area:** 4,968 SF

Distress Description	Severity	Quantity
LONGITUDINAL/TRANSVERSE CRACKING	L	62 LF
LONGITUDINAL/TRANSVERSE CRACKING	M	105 LF
PATCHING	L	48 SF
WEATHERING	L	4,223 SF
WEATHERING	M	745 SF

**Sample # 8**      **Area:** 4,968 SF

Distress Description	Severity	Quantity
LONGITUDINAL/TRANSVERSE CRACKING	L	168 LF
LONGITUDINAL/TRANSVERSE CRACKING	M	136 LF
WEATHERING	L	3,974 SF
WEATHERING	M	994 SF

**Sample # 13**      **Area:** 4,968 SF

Distress Description	Severity	Quantity
LONGITUDINAL/TRANSVERSE CRACKING	L	148 LF
LONGITUDINAL/TRANSVERSE CRACKING	M	74 LF
PATCHING	L	28 SF
WEATHERING	L	4,471 SF
WEATHERING	M	497 SF

**Sample # 14**      **Area:** 4,968 SF

Distress Description	Severity	Quantity
LONGITUDINAL/TRANSVERSE CRACKING	L	38 LF
LONGITUDINAL/TRANSVERSE CRACKING	M	45 LF
PATCHING	L	35 SF
WEATHERING	L	3,974 SF
WEATHERING	M	994 SF

**Extrapolated Distress Quantities\***

Distress Description	Severity	Quantity	Density	Deduct
LONGITUDINAL/TRANSVERSE CRACKING	M	1,361 LF	1.77%	14.75
LONGITUDINAL/TRANSVERSE CRACKING	L	1,631 LF	2.12%	7.72
WEATHERING	M	11,555 SF	15.00%	7.19
WEATHERING	L	65,457 SF	85.00%	5.79
PATCHING	L	453 SF	0.59%	2.65

\* Multiple deduct values are scaled down from their algebraic sum to keep the model consistent with experimental data.

**Percent of Deduct Values Based on Distress Mechanism**

0.0 % Load                      100.0 % Climate/Durability                      0.0 % Other

# COLUMBUS AIRPORT

Branch: 59R RUNWAY

R-1

Length: 3,800 LF    Width: 75 LF    Area: 285,000 SF    Last Const: 1998    Family: ACRMU  
 From: 17+00    To: 55+00    Surface: AC

## Inspections

Samples Surveyed: 7    Total Samples: 58    Last Inspection Date: 8/29/2012    **PCI: 72**

Sample # 7    Area: 4,875 SF

Distress Description	Severity	Quantity
LONGITUDINAL/TRANSVERSE CRACKING	L	67 LF
LONGITUDINAL/TRANSVERSE CRACKING	M	110 LF
WEATHERING	L	2,925 SF

Sample # 15    Area: 4,875 SF

Distress Description	Severity	Quantity
LONGITUDINAL/TRANSVERSE CRACKING	L	62 LF
LONGITUDINAL/TRANSVERSE CRACKING	M	187 LF
WEATHERING	L	2,925 SF

Sample # 23    Area: 4,875 SF

Distress Description	Severity	Quantity
LONGITUDINAL/TRANSVERSE CRACKING	L	76 LF
LONGITUDINAL/TRANSVERSE CRACKING	M	193 LF
WEATHERING	L	2,925 SF

Sample # 31    Area: 4,875 SF

Distress Description	Severity	Quantity
LONGITUDINAL/TRANSVERSE CRACKING	L	133 LF
LONGITUDINAL/TRANSVERSE CRACKING	M	45 LF
WEATHERING	L	3,413 SF

Sample # 39    Area: 4,875 SF

Distress Description	Severity	Quantity
LONGITUDINAL/TRANSVERSE CRACKING	L	105 LF
LONGITUDINAL/TRANSVERSE CRACKING	M	109 LF
WEATHERING	L	3,413 SF

Sample # 47    Area: 4,875 SF

Distress Description	Severity	Quantity
LONGITUDINAL/TRANSVERSE CRACKING	L	90 LF
LONGITUDINAL/TRANSVERSE CRACKING	M	75 LF
WEATHERING	L	3,413 SF

Sample # 55    Area: 4,875 SF

Distress Description	Severity	Quantity
LONGITUDINAL/TRANSVERSE CRACKING	L	82 LF
LONGITUDINAL/TRANSVERSE CRACKING	M	182 LF
WEATHERING	L	3,413 SF

### Extrapolated Distress Quantities\*

Distress Description	Severity	Quantity	Density	Deduct
		. SF	0.00%	

\* Multiple deduct values are scaled down from their algebraic sum to keep the model consistent with experimental data.

### Percent of Deduct Values Based on Distress Mechanism

0.0 % Load                      81.0 % Climate/Durability                      19.0 % Other

**COLUMBUS AIRPORT**

Branch: 59T TAXIWAY **T-1**

Length: 3,063 LF Width: 25 LF Area: 76,575 SF Last Const: 1998 Family: ACRMU  
 From: PARTIAL PARALLEL To: AND TURNAROUND Surface: AC

**Inspections**

Samples Surveyed: 5 Total Samples: 18 Last Inspection Date: 8/29/2012 **PCI: 77**

Sample #	Distress Description	Severity	Quantity	Area:
1	LONGITUDINAL/TRANSVERSE CRACKING	M	77	3,325 SF
	LONGITUDINAL/TRANSVERSE CRACKING	L	48	
	WEATHERING	L	665	
5	DEPRESSION	L	4	4,625 SF
	LONGITUDINAL/TRANSVERSE CRACKING	M	50	
	LONGITUDINAL/TRANSVERSE CRACKING	L	178	
	WEATHERING	L	460	
9	LONGITUDINAL/TRANSVERSE CRACKING	L	88	4,625 SF
	LONGITUDINAL/TRANSVERSE CRACKING	M	82	
	WEATHERING	L	450	
13	LONGITUDINAL/TRANSVERSE CRACKING	L	294	4,625 SF
	LONGITUDINAL/TRANSVERSE CRACKING	M	82	
	WEATHERING	L	925	
17	LONGITUDINAL/TRANSVERSE CRACKING	L	301	4,320 SF
	LONGITUDINAL/TRANSVERSE CRACKING	M	46	
	WEATHERING	L	1300	

**Extrapolated Distress Quantities\***

Distress Description	Severity	Quantity	Density	Deduct
DEPRESSION	L	14 SqFt	0.02%	0.30
LONGITUDINAL/TRANSVERSE CRACKING	L	3,235 Ft	4.22%	13.04
LONGITUDINAL/TRANSVERSE CRACKING	M	1,199 Ft	1.57%	13.88
WEATHERING	L	13,522 SqFt	17.66%	2.58

\* Multiple deduct values are scaled down from their algebraic sum to keep the model consistent with experimental data.

**Percent of Deduct Values Based on Distress Mechanism**

0.0 % Load                      99.0 % Climate/Durability                      1.0 % Other

**COLUMBUS AIRPORT**

Branch: 59T TAXIWAY **T-2**

Length: 732 LF Width: 20 LF Area: 14,640 SF Last Const: 1998 Family: ACRMU  
 From: T-1 To: HANGARS Surface: AC

**Inspections**

Samples Surveyed: 3 Total Samples: 3 Last Inspection Date: 8/29/2012 **PCI: 82**

Sample # 1 Area: 4,880 SF

Distress Description	Severity	Quantity
LONGITUDINAL/TRANSVERSE CRACKING	L	29
LONGITUDINAL/TRANSVERSE CRACKING	M	44
RAVELING	L	1
WEATHERING	L	960

Sample # 2 Area: 4,880 SF

Distress Description	Severity	Quantity
LONGITUDINAL/TRANSVERSE CRACKING	M	20
LONGITUDINAL/TRANSVERSE CRACKING	L	108
OIL SPILLAGE	N	2
RAVELING	M	5
WEATHERING	L	950

Sample # 3 Area: 4,880 SF

Distress Description	Severity	Quantity
LONGITUDINAL/TRANSVERSE CRACKING	L	177
WEATHERING	L	950

**Extrapolated Distress Quantities\***

Distress Description	Severity	Quantity	Density	Deduct
LONGITUDINAL/TRANSVERSE CRACKING	L	314 Ft	2.14%	7.79
LONGITUDINAL/TRANSVERSE CRACKING	M	64 Ft	0.44%	7.80
OIL SPILLAGE	N	2 SqFt	0.01%	2.00
RAVELING	M	5 SqFt	0.03%	4.00
RAVELING	L	1 SqFt	0.01%	1.00
WEATHERING	L	2860 SqFt	19.54%	2.76

\* Multiple deduct values are scaled down from their algebraic sum to keep the model consistent with experimental data.

**Percent of Deduct Values Based on Distress Mechanism**

0.0 % Load 92.0 % Climate/Durability 8.0 % Other

**COLUMBUS AIRPORT**

Branch: 59T TAXIWAY

**T-3**

Length: 1,811 LF Width: 25 LF Area: 45,275 SF Last Const: 2001 Family: ACRMU  
 From: R-1 To: A-1 Surface: AC

**Inspections**

Samples Surveyed: 4 Total Samples: 9 Last Inspection Date: 8/29/2012 **PCI: 75**

Sample # 2 Area: 4,625 SF

Distress Description	Severity	Quantity
LONGITUDINAL/TRANSVERSE CRACKING	L	186
LONGITUDINAL/TRANSVERSE CRACKING	M	51
WEATHERING	L	460

Sample # 5 Area: 4,625 SF

Distress Description	Severity	Quantity
LONGITUDINAL/TRANSVERSE CRACKING	M	100
LONGITUDINAL/TRANSVERSE CRACKING	M	241
WEATHERING	L	460

Sample # 6 Area: 4,625 SF

Distress Description	Severity	Quantity
LONGITUDINAL/TRANSVERSE CRACKING	L	332
LONGITUDINAL/TRANSVERSE CRACKING	M	70
WEATHERING	L	460

Sample # 9 Area: 4,625 SF

Distress Description	Severity	Quantity
LONGITUDINAL/TRANSVERSE CRACKING	M	75
LONGITUDINAL/TRANSVERSE CRACKING	L	147
WEATHERING	L	460

**Extrapolated Distress Quantities\***

Distress Description	Severity	Quantity	Density	Deduct
LONGITUDINAL/TRANSVERSE CRACKING	L	1627.45 Ft	3.59%	11.54
LONGITUDINAL/TRANSVERSE CRACKING	M	1314.2 Ft	2.90%	19.14
WEATHERING	L	4503.03 SqFt	9.95%	1.71

\* Multiple deduct values are scaled down from their algebraic sum to keep the model consistent with experimental data.

**Percent of Deduct Values Based on Distress Mechanism**

0.0 % Load 100.0 % Climate/Durability 0.0 % Other



## COLUMBUS AIRPORT

**FIRST YEAR LOCAL: 2013** **LOCAL REPAIR COST: \$28,861**

Section	Distress Description	Severity	Quantity	Work Description	Quantity	Cost	Policv
A-1	L & T CR	M	1,361 LF	Crack Sealing - AC	1,361 LF	\$3,403	PREV.
R-1	L & T CR	M	7,512 LF	Crack Sealing - AC	7,512 LF	\$18,781	PREV.
T-1	L & T CR	M	1,199 LF	Crack Sealing - AC	1,199 LF	\$2,998	PREV.
T-2	L & T CR	M	64 LF	Crack Sealing - AC	64 LF	\$160	PREV.
T-2	OIL SPILLAGE	N	2 SF	Patching - AC Shallow	12 SF	\$234	PREV.
T-3	L & T CR	M	1,314 LF	Crack Sealing - AC	1,314 LF	\$3,286	PREV.

**FIFTEEN YEAR PROJECTIONS** **ESTIMATED AVERAGE ANNUAL COST: \$88,946**

Plan Year: 2013				Estimated Cost: \$147,896		PCI		
Section	Maintenance	Local	Global	Major<Crit	Major>Crit	Total	Before	After
A-1	Global MR + Preventive	\$6,353	\$19,253	\$0	\$0	\$25,606	67	71
R-1	Global MR + Preventive	\$13,143	\$71,251	\$0	\$0	\$84,394	71	75
T-1	Global MR + Preventive	\$2,067	\$19,144	\$0	\$0	\$21,211	76	80
T-2	Global MR + Preventive	\$139	\$3,660	\$0	\$0	\$3,799	81	86
T-3	Global MR + Preventive	\$1,567	\$11,319	\$0	\$0	\$12,886	74	78

Plan Year: 2014				Estimated Cost: \$18,862		PCI		
Section	Maintenance	Local	Global	Major<Crit	Major>Crit	Total	Before	After
A-1	Preventive	\$4,751	\$0	\$0	\$0	\$4,751	69	69
R-1	Preventive	\$11,367	\$0	\$0	\$0	\$11,367	73	73
T-1	Preventive	\$1,416	\$0	\$0	\$0	\$1,416	78	78
T-2	Preventive	\$102	\$0	\$0	\$0	\$102	83	83
T-3	Preventive	\$1,225	\$0	\$0	\$0	\$1,225	76	76

Plan Year: 2015				Estimated Cost: \$24,212		PCI		
Section	Maintenance	Local	Global	Major<Crit	Major>Crit	Total	Before	After
A-1	Preventive	\$6,560	\$0	\$0	\$0	\$6,560	67	67
R-1	Preventive	\$13,750	\$0	\$0	\$0	\$13,750	71	71
T-1	Preventive	\$2,128	\$0	\$0	\$0	\$2,128	76	76
T-2	Preventive	\$144	\$0	\$0	\$0	\$144	81	81
T-3	Preventive	\$1,629	\$0	\$0	\$0	\$1,629	74	74

Plan Year: 2016				Estimated Cost: \$30,607		PCI		
Section	Maintenance	Local	Global	Major<Crit	Major>Crit	Total	Before	After
A-1	Preventive	\$8,390	\$0	\$0	\$0	\$8,390	65	65
R-1	Preventive	\$17,096	\$0	\$0	\$0	\$17,096	70	70
T-1	Preventive	\$2,832	\$0	\$0	\$0	\$2,832	74	74
T-2	Preventive	\$260	\$0	\$0	\$0	\$260	78	79
T-3	Preventive	\$2,028	\$0	\$0	\$0	\$2,028	72	72

Plan Year: 2017				Estimated Cost: \$39,170		PCI		
Section	Maintenance	Local	Global	Major<Crit	Major>Crit	Total	Before	After
A-1	Preventive	\$10,254	\$0	\$0	\$0	\$10,254	63	63
R-1	Preventive	\$22,550	\$0	\$0	\$0	\$22,550	68	68
T-1	Preventive	\$3,530	\$0	\$0	\$0	\$3,530	72	72
T-2	Preventive	\$406	\$0	\$0	\$0	\$406	76	76
T-3	Preventive	\$2,430	\$0	\$0	\$0	\$2,430	71	71

Plan Year: 2018				Estimated Cost: \$192,743		PCI		
Section	Maintenance	Local	Global	Major<Crit	Major>Crit	Total	Before	After
A-1	Global MR + Preventive	\$12,160	\$22,320	\$0	\$0	\$34,480	61	65
R-1	Global MR + Preventive	\$28,184	\$82,599	\$0	\$0	\$110,783	66	70
T-1	Global MR + Preventive	\$4,225	\$22,193	\$0	\$0	\$26,418	71	74
T-2	Global MR + Preventive	\$549	\$4,243	\$0	\$0	\$4,792	74	79
T-3	Global MR + Preventive	\$3,149	\$13,122	\$0	\$0	\$16,271	69	73

Plan Year: 2019				Estimated Cost: \$40,752		PCI		
Section	Maintenance	Local	Global	Major<Crit	Major>Crit	Total	Before	After
A-1	Preventive	\$10,695	\$0	\$0	\$0	\$10,695	63	63
R-1	Preventive	\$23,414	\$0	\$0	\$0	\$23,414	68	68
T-1	Preventive	\$3,683	\$0	\$0	\$0	\$3,683	72	73
T-2	Preventive	\$417	\$0	\$0	\$0	\$417	77	77
T-3	Preventive	\$2,543	\$0	\$0	\$0	\$2,543	71	71

**COLUMBUS AIRPORT**

Plan Year: 2020		Estimated Cost: \$50,398				PCI		
Section	Maintenance	Local	Global	Major<Crit	Major>Crit	Total	Before	After
A-1	Preventive	\$12,730	\$0	\$0	\$0	\$12,730	62	62
R-1	Preventive	\$29,408	\$0	\$0	\$0	\$29,408	67	67
T-1	Preventive	\$4,426	\$0	\$0	\$0	\$4,426	71	71
T-2	Preventive	\$570	\$0	\$0	\$0	\$570	75	75
T-3	Preventive	\$3,263	\$0	\$0	\$0	\$3,263	69	69

Plan Year: 2021		Estimated Cost: \$61,208				PCI		
Section	Maintenance	Local	Global	Major<Crit	Major>Crit	Total	Before	After
A-1	Preventive	\$14,912	\$0	\$0	\$0	\$14,912	60	60
R-1	Preventive	\$35,671	\$0	\$0	\$0	\$35,671	65	65
T-1	Preventive	\$5,665	\$0	\$0	\$0	\$5,665	69	69
T-2	Preventive	\$722	\$0	\$0	\$0	\$722	73	73
T-3	Preventive	\$4,239	\$0	\$0	\$0	\$4,239	68	68

Plan Year: 2022		Estimated Cost: \$73,756				PCI		
Section	Maintenance	Local	Global	Major<Crit	Major>Crit	Total	Before	After
A-1	Preventive	\$17,952	\$0	\$0	\$0	\$17,952	58	58
R-1	Preventive	\$42,317	\$0	\$0	\$0	\$42,317	64	64
T-1	Preventive	\$7,364	\$0	\$0	\$0	\$7,364	68	68
T-2	Preventive	\$873	\$0	\$0	\$0	\$873	71	71
T-3	Preventive	\$5,252	\$0	\$0	\$0	\$5,252	66	66

Plan Year: 2023		Estimated Cost: \$254,666				PCI		
Section	Maintenance	Local	Global	Major<Crit	Major>Crit	Total	Before	After
A-1	Global MR + Preventive	\$21,160	\$25,875	\$0	\$0	\$47,035	56	60
R-1	Global MR + Preventive	\$49,486	\$95,755	\$0	\$0	\$145,241	62	65
T-1	Global MR + Preventive	\$9,129	\$25,728	\$0	\$0	\$34,856	66	69
T-2	Global MR + Preventive	\$1,088	\$4,919	\$0	\$0	\$6,007	69	73
T-3	Global MR + Preventive	\$6,316	\$15,212	\$0	\$0	\$21,527	65	68

Plan Year: 2024		Estimated Cost: \$77,058				PCI		
Section	Maintenance	Local	Global	Major<Crit	Major>Crit	Total	Before	After
A-1	Preventive	\$18,741	\$0	\$0	\$0	\$18,741	58	58
R-1	Preventive	\$44,263	\$0	\$0	\$0	\$44,263	64	64
T-1	Preventive	\$7,663	\$0	\$0	\$0	\$7,663	68	68
T-2	Preventive	\$913	\$0	\$0	\$0	\$913	71	71
T-3	Preventive	\$5,478	\$0	\$0	\$0	\$5,478	66	66

Plan Year: 2025		Estimated Cost: \$91,186				PCI		
Section	Maintenance	Local	Global	Major<Crit	Major>Crit	Total	Before	After
A-1	Preventive	\$22,119	\$0	\$0	\$0	\$22,119	57	57
R-1	Preventive	\$51,809	\$0	\$0	\$0	\$51,809	62	62
T-1	Preventive	\$9,531	\$0	\$0	\$0	\$9,531	66	66
T-2	Preventive	\$1,123	\$0	\$0	\$0	\$1,123	70	70
T-3	Preventive	\$6,603	\$0	\$0	\$0	\$6,603	65	65

Plan Year: 2026		Estimated Cost: \$106,464				PCI		
Section	Maintenance	Local	Global	Major<Crit	Major>Crit	Total	Before	After
A-1	Preventive	\$25,701	\$0	\$0	\$0	\$25,701	55	55
R-1	Preventive	\$59,977	\$0	\$0	\$0	\$59,977	61	61
T-1	Preventive	\$11,493	\$0	\$0	\$0	\$11,493	65	65
T-2	Preventive	\$1,488	\$0	\$0	\$0	\$1,488	68	68
T-3	Preventive	\$7,806	\$0	\$0	\$0	\$7,806	63	63

Plan Year: 2027		Estimated Cost: \$125,210				PCI		
Section	Maintenance	Local	Global	Major<Crit	Major>Crit	Total	Before	After
A-1	Preventive	\$29,530	\$0	\$0	\$0	\$29,530	53	53
R-1	Preventive	\$71,132	\$0	\$0	\$0	\$71,132	59	59
T-1	Preventive	\$13,586	\$0	\$0	\$0	\$13,586	63	63
T-2	Preventive	\$1,867	\$0	\$0	\$0	\$1,867	67	67
T-3	Preventive	\$9,095	\$0	\$0	\$0	\$9,095	62	62



---

---

# COLUMBUS AIRPORT

---

---

8/29/2012



A-1, Overview



A-1, Surface detail with crack



R-1, Overview



R-1, Surface detail with crack



---

---

COLUMBUS AIRPORT

---

---

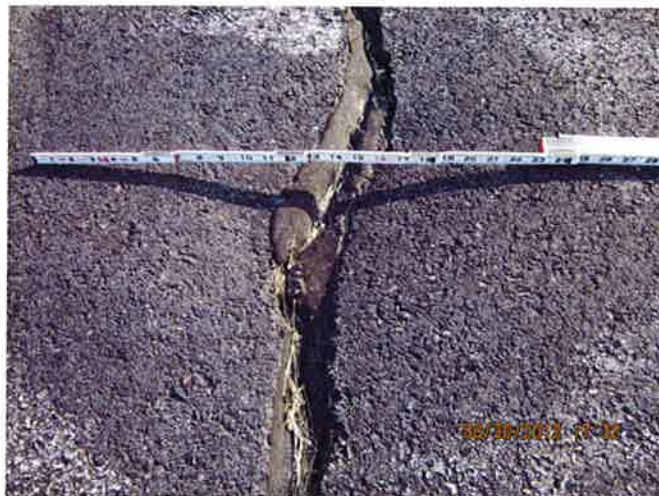
8/29/2012



T-1, Overview



T-1, Surface detail with crack



T-1, Surface detail with depression



T-2, Overview

---

---

COLUMBUS AIRPORT

---

---

8/29/2012



T-2, Surface detail with crack

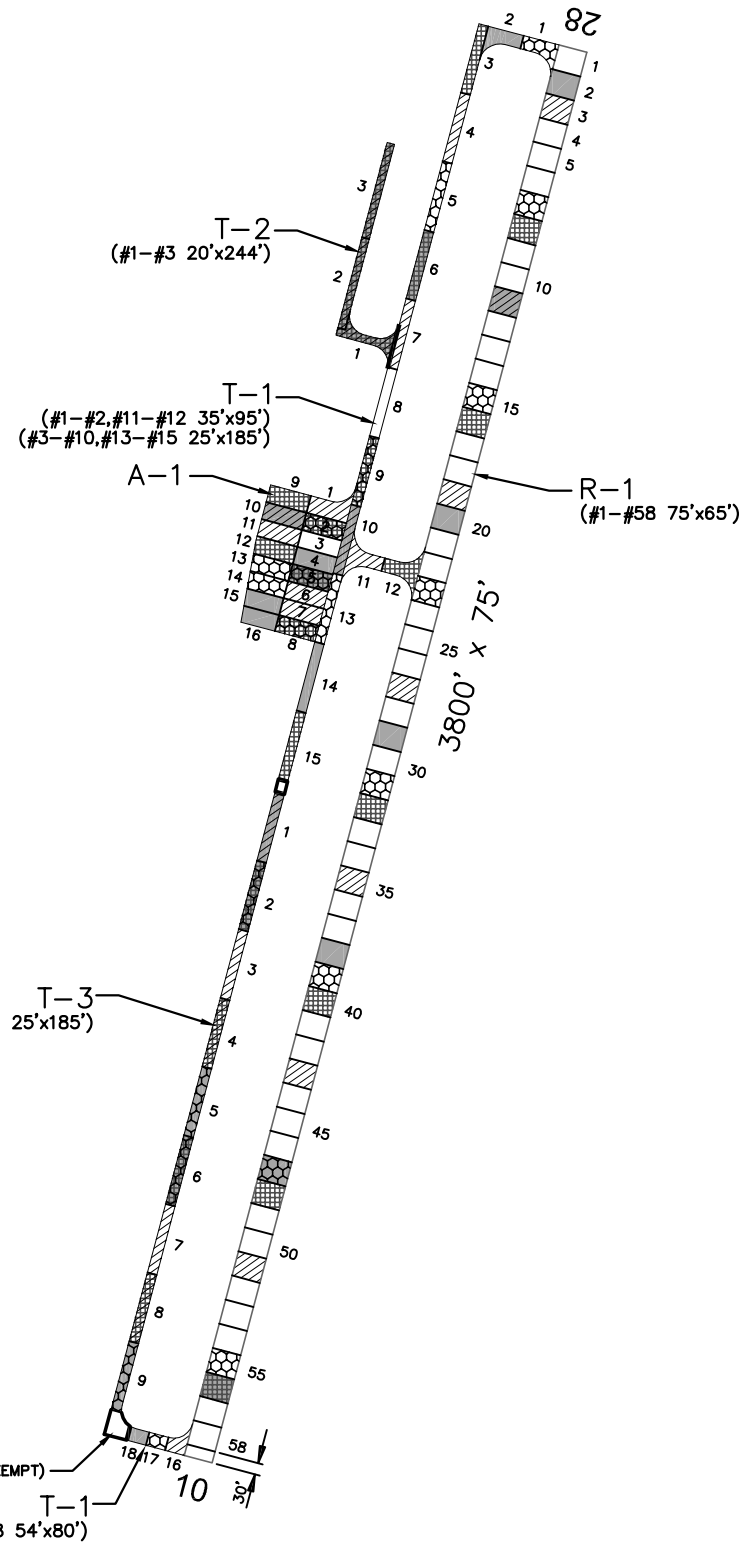
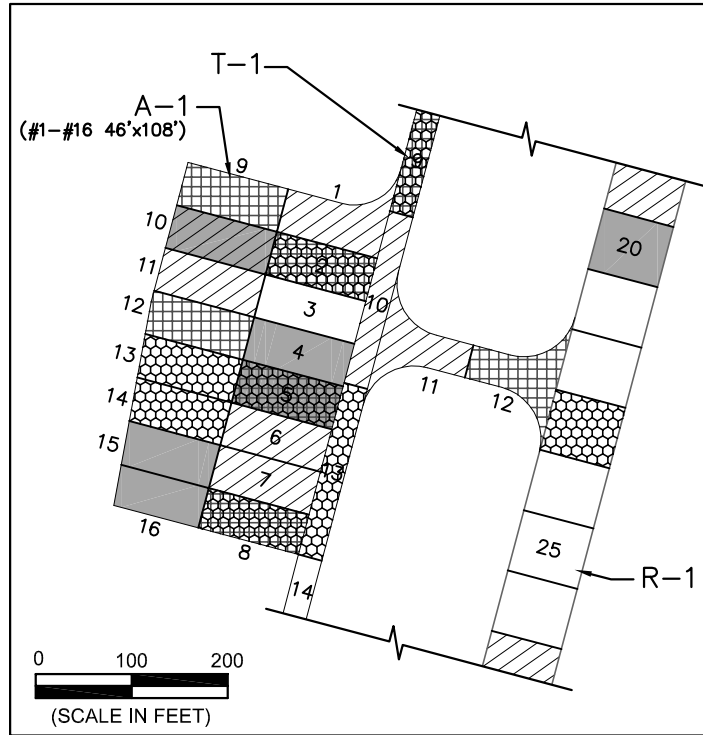


T-2, Surface detail with oil spillage



# COLUMBUS

COLUMBUS



## PAVEMENT STRENGTH SURVEY/PAVEMENT CONDITION SURVEY

PAVE. IDENT.	SOIL CLASS	SUB GRADE CLASS	SUBBASE COURSE	BASE COURSE	SURFACE COURSE	OVERLAY	PAVEMENT STRENGTH			REMARKS
							MAX. GROSS LOAD (LBS)			
							SINGLE	DUAL	DUAL TAN.	
<b>RUNWAYS</b>										
R-1	CBR=1.5	CH(A-7-6)	6" COMP. P-152 W/FABRIC	13" P-208	3" P-401		12,500			1 3 4
<b>TAXIWAYS</b>										
T-1	CBR=1.5	CH(A-7-6)	6" COMP. P-152 W/FABRIC	13" P-208	3" P-401		12,500			1 3 4
T-2	CBR=1.5	CH(A-7-6)	6" COMP. P-152 W/FABRIC	13" P-208	3" P-401		12,500			1 3 4
T-3	CBR=3	CH(A-7-6)	6" COMP. P-152 W/FABRIC	13" P-208	3" P-401		12,500			2 3 4
<b>APRONS</b>										
A-1	CBR=1.5	CH(A-7-6)	6" COMP. P-152 W/FABRIC	13" P-208	3" P-401		12,500			1 3 4

**REMARKS:**

- 1 AIP-02, 1998, ALL NEW CONSTRUCTION.
- 2 AIP-03, 2002, CONSTRUCT PARALLEL TAXIWAY A (T-3).
- 3 AIP-004, 2004, CRACK SEAL, FOG SEAL, AND REMARK ALL AIRCRAFT PAVEMENTS.
- 4 AIP-008, 2010, PAVEMENT MAINTENANCE, CRACK SEAL, FOG SEAL, AND REMARK ALL AIRCRAFT PAVEMENTS.

**LEGEND**

- 1997 SURVEY AREA (NOT SURVEYED)
- 2000 SURVEY AREA (NOT SURVEYED)
- 2003 SURVEY AREA
- 2006 SURVEY AREA
- 2009 SURVEY AREA
- 2012 SURVEY AREA

DATE OF PAVEMENT STRENGTH SURVEY:	
EVALUATED BY:	
DATE OF MOST RECENT PAVEMENT CONDITION SURVEY:	AUG. 29, 2012
EVALUATED BY:	S. BROWN

**MONTANA AVIATION SYSTEM PLAN  
2012 UPDATE - PAVEMENT CONDITION INDEXES**

**COLUMBUS MUNICIPAL**

PREPARED FOR:  COLUMBUS MONTANA

PREPARED BY: 

DATE: NOV. 2012

