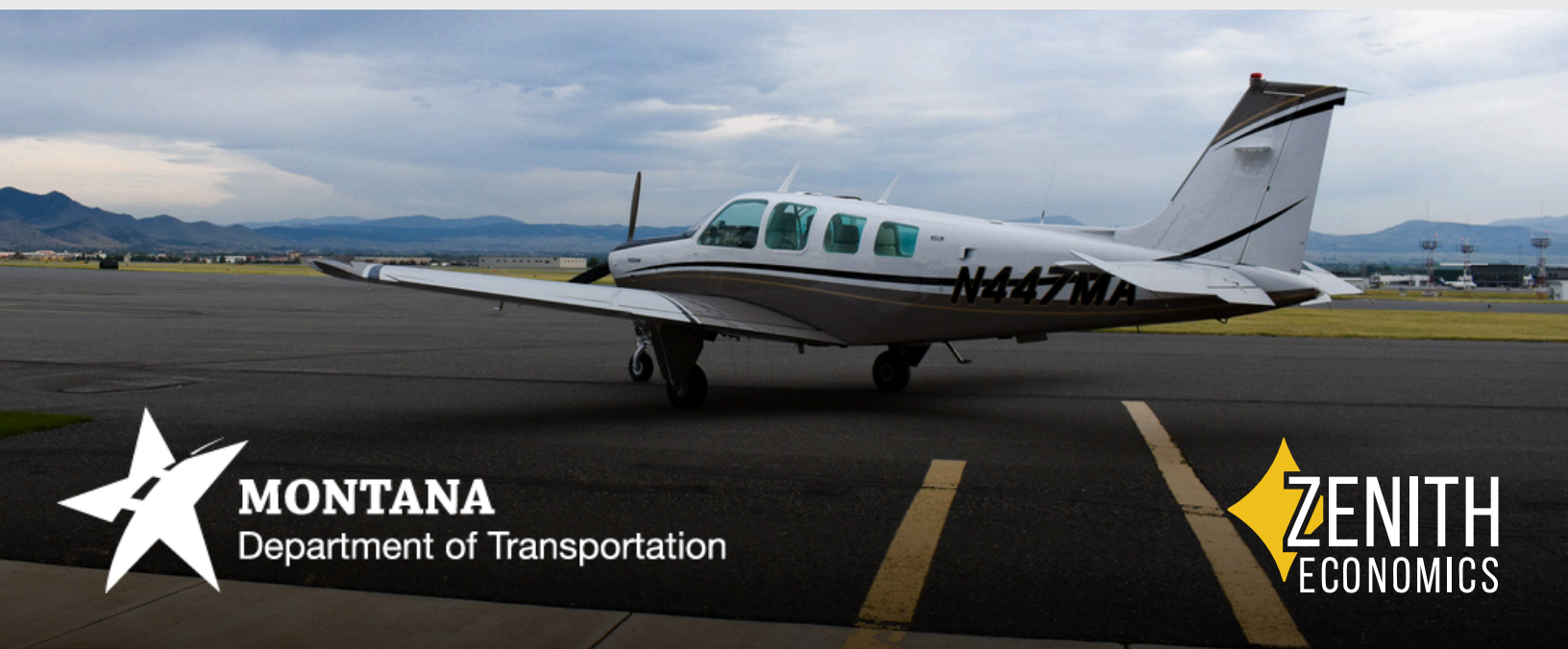




Economic Impact Study
Starr-Browning Airstrip Airport
2026

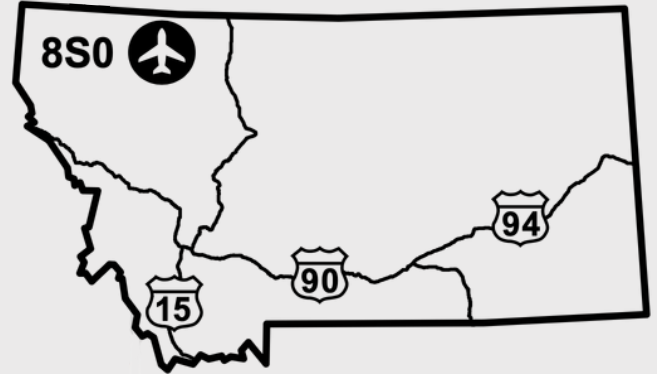


MONTANA
Department of Transportation



Starr-Browning Airstrip Airport Impact

Starr-Browning Airstrip is a public-use general aviation airport located five miles northwest of Browning, Glacier County on the Blackfeet Indian Reservation in northern Montana, near the eastern entrance to Glacier National Park. The state-owned airfield features a primary runway of approximately 4,050 feet on 28 acres of tribal land and handles approximately 1,000 annual operations. The airport's primary function is supporting medical flights, providing critical air ambulance access for tribal communities to regional hospitals. Other activities include search and rescue, law enforcement, wildland firefighting, military exercises, flight training, aerial photography and surveying, aerial inspections, and tourism and government aircraft operations.



Total Economic Impact on Montana



Economic Impact
\$31 Thousand



Payroll
\$10 Thousand

Qualitative Impacts

In addition to generating substantial economic impacts, this airport supports a variety of harder to quantify “Qualitative Impacts” that support critical statewide safety and enterprise. The 2026 Montana Statewide Economic Impact of Airports Study documents the following non-inclusive list of qualitative impacts associated with the airport:



Search & Rescue
Supports Search and Rescue Operations



Police/Law Enforcement
Supports Police and Emergency Response Ops



Aerial Firefighting
Supports Wildland Firefighting Operations



Military Exercise/Training
Used for Military Training and/or Transit Flights



Emergency Medical Aviation
Supports Air Ambulance Operations



Recreation and Education
Provides Pilot Training, Aviation Education, and access to recreational flying

Source: Montana Statewide Economic Impact of Airports.

Montana Airports Support Our State



Jobs
39,400



Economic Impact
\$6.4 Billion



Payroll
\$2.4 Billion

Montana's airport system functions as a critical component of the state's transportation and economic infrastructure, enabling connectivity across a large and geographically dispersed landscape. Through scheduled commercial service and general aviation activity, airports provide access between Montana communities and regional, national, and international markets, supporting passenger travel, freight movement, and time-sensitive operations that cannot be efficiently served by surface transportation alone.

Beyond mobility, Montana's airports support a broad range of economic activity that contributes to employment, income generation, and business operations throughout the state. Aviation-related enterprises, on-airport and nearby businesses, visitor spending associated with air travel, and ongoing investment in airport facilities collectively generate economic activity at the local, regional, and statewide levels. These effects extend across multiple sectors, including tourism, healthcare, construction, professional services, and natural resource industries.

To document both the economic contributions and broader community functions of the state's aviation system, the Montana Department of Transportation undertook a comprehensive, statewide evaluation of Montana's airports. The **2026 Montana Statewide Economic Impact of Aviation** study examines the full scope of airport-related activity, including aviation and non-aviation businesses, visitor spending, capital investment, and secondary economic effects, while also identifying the specific roles individual airports play in supporting residents, businesses, and critical services across Montana.



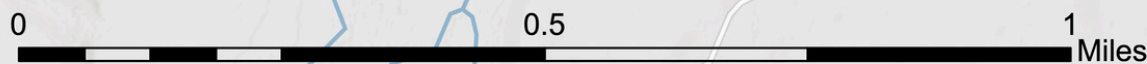
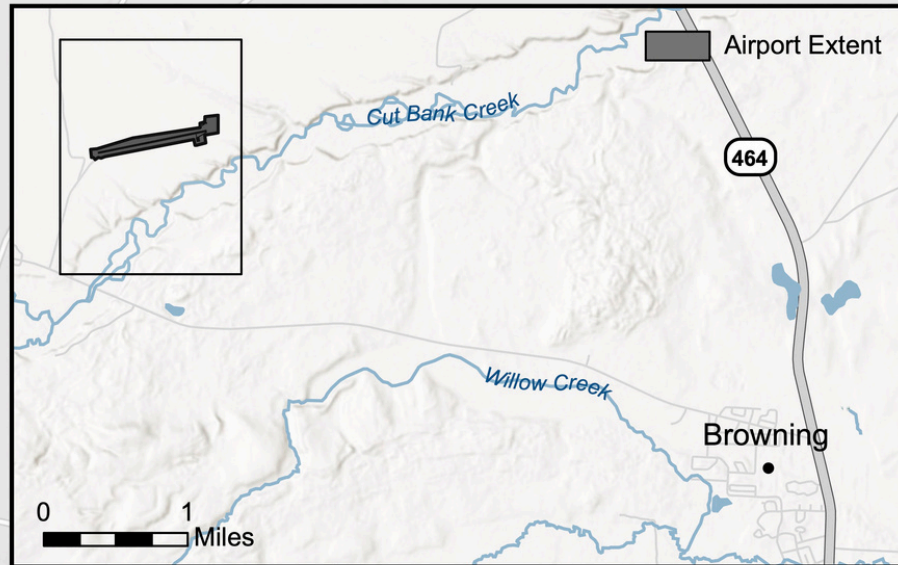
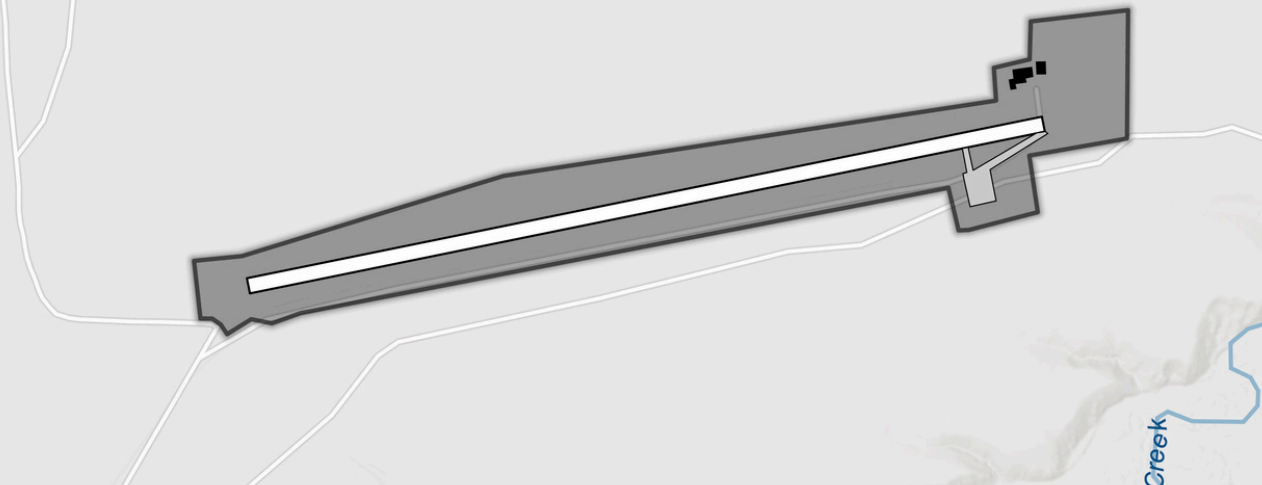
Starr-Browning Airstrip (8S0)

Browning, MT

-  Airport Extent
-  Paved Runway
-  Paved Area
-  Airport Structure



48° 36.1' N
113° 6.9' W
4656'



AERONAUTICS DIVISION
2630 Airport Road
PO Box 200507
Helena, MT 59620-0507



To request an alternative accessible format of this document, please contact MDT's ADA Coordinator, Matt Maze, at 406-444-5416, Montana Relay Service at 711, or by email at mmaze@mt.gov.

This document is printed at state expense. Information on the cost of producing this publication may be obtained by contacting the Department of Administration.