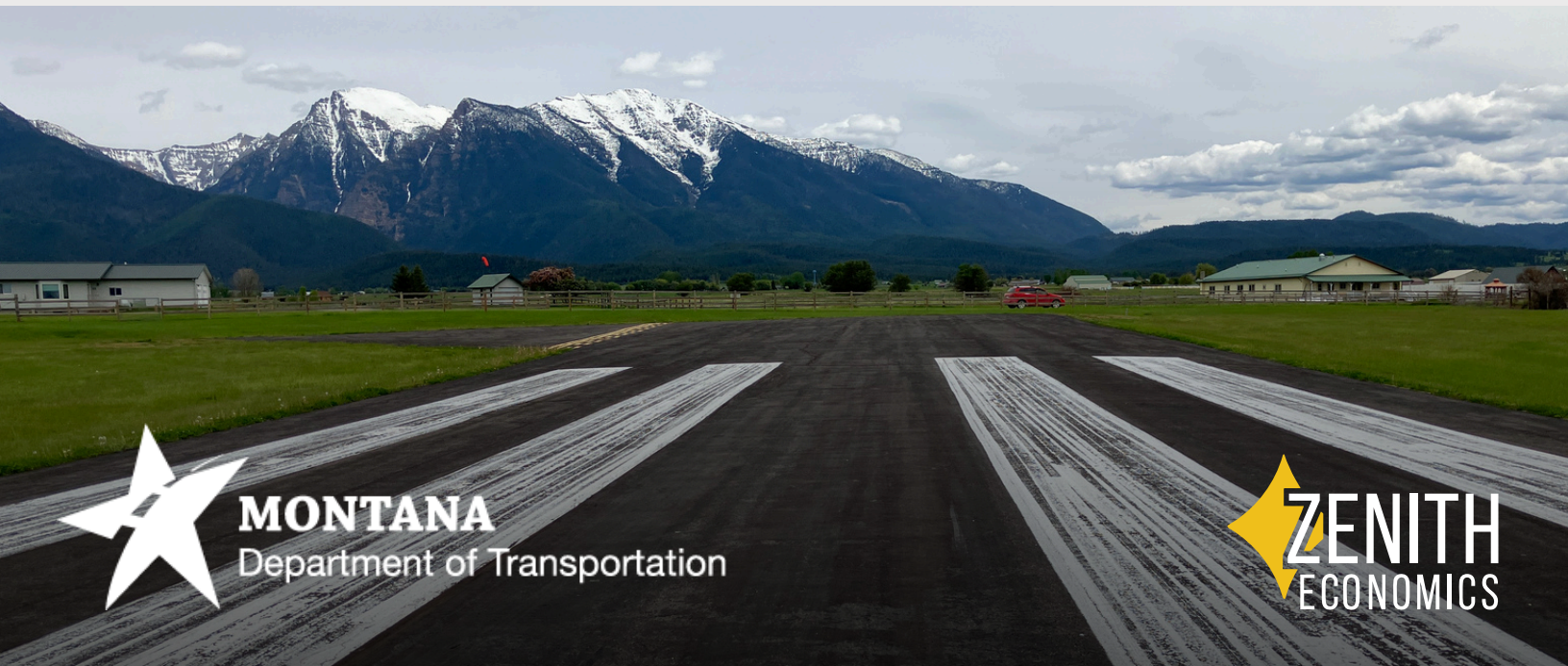




Economic Impact Study
St Ignatius Airport
2026



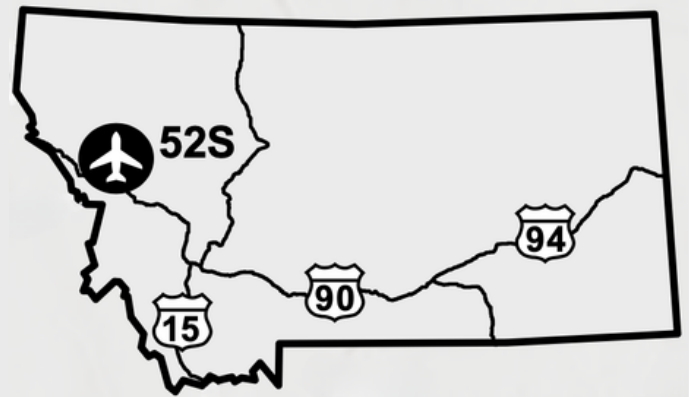
MONTANA
Department of Transportation



ZENITH
ECONOMICS

St Ignatius Airport Impact

St Ignatius Airport is a public-use general aviation airport located in St Ignatius, in Lake County on the Flathead Indian Reservation in western Montana, with views of the Mission Mountains. The airfield features a primary runway of 2,610 feet, a secondary 300-foot turf runway and supports approximately 500 annual general aviation operations. Airport activities include recreational flying, search and rescue, flight training, emergency medical transport, and wildland firefighting. The airport hosts an annual fly-in every July as part of Good Old Days, drawing over 50 aircraft and 700 people, and an annual pumpkin drop for local high school scholarships.



Total Economic Impact on Montana



Jobs
1



Economic Impact
\$153 Thousand



Payroll
\$59 Thousand

Qualitative Impacts

In addition to generating substantial economic impacts, this airport supports a variety of harder to quantify “Qualitative Impacts” that support critical statewide safety and enterprise. The 2026 Montana Statewide Economic Impact of Airports Study documents the following non-inclusive list of qualitative impacts associated with the airport:



Aerial Firefighting
Supports Wildland Firefighting Operations



Flight Training & Education
Provides Pilot Training and Aviation Education



Emergency Medical Aviation
Supports Air Ambulance Operations



Recreational Flying
Supports recreational flying and access



VIP/Visitor Gateway
Serves as Gateway for High-Profile Visitors and Tourism

Source: Montana Statewide Economic Impact of Airports.

Montana Airports Support Our State



Jobs
39,400



Economic Impact
\$6.4 Billion



Payroll
\$2.4 Billion

Montana's airport system functions as a critical component of the state's transportation and economic infrastructure, enabling connectivity across a large and geographically dispersed landscape. Through scheduled commercial service and general aviation activity, airports provide access between Montana communities and regional, national, and international markets, supporting passenger travel, freight movement, and time-sensitive operations that cannot be efficiently served by surface transportation alone.

Beyond mobility, Montana's airports support a broad range of economic activity that contributes to employment, income generation, and business operations throughout the state. Aviation-related enterprises, on-airport and nearby businesses, visitor spending associated with air travel, and ongoing investment in airport facilities collectively generate economic activity at the local, regional, and statewide levels. These effects extend across multiple sectors, including tourism, healthcare, construction, professional services, and natural resource industries.

To document both the economic contributions and broader community functions of the state's aviation system, the Montana Department of Transportation undertook a comprehensive, statewide evaluation of Montana's airports. The **2026 Montana Statewide Economic Impact of Aviation** study examines the full scope of airport-related activity, including aviation and non-aviation businesses, visitor spending, capital investment, and secondary economic effects, while also identifying the specific roles individual airports play in supporting residents, businesses, and critical services across Montana.

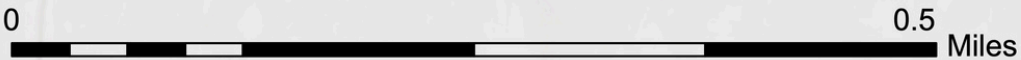
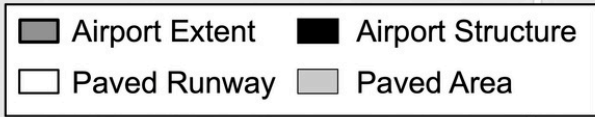
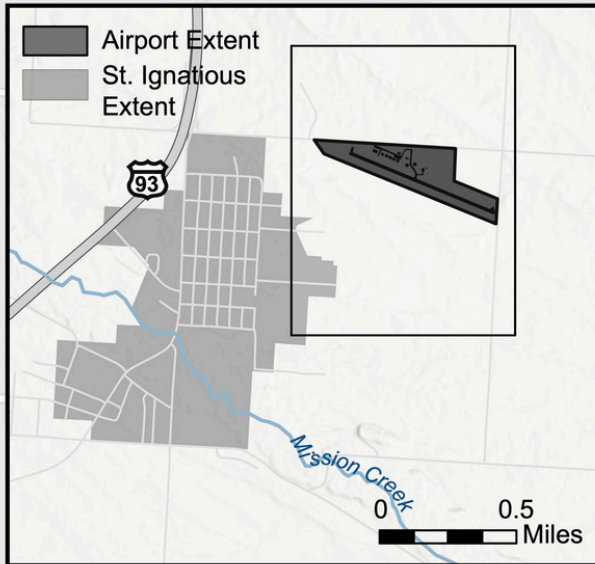
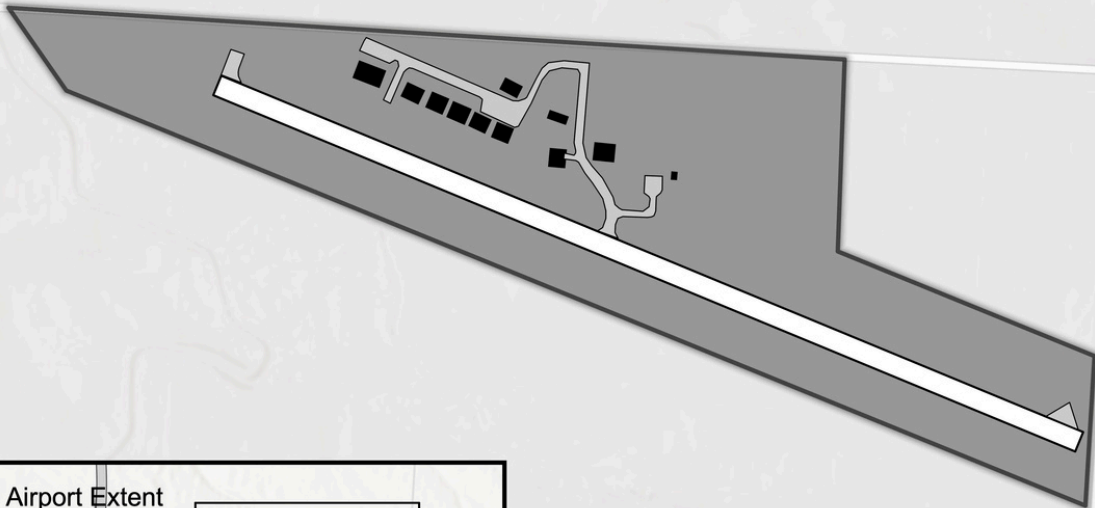


St. Ignatius Airport (52S)

St. Ignatius, MT



47° 19.5' N
114° 4.8' W
3006'



AERONAUTICS DIVISION
2630 Airport Road
PO Box 200507
Helena, MT 59620-0507



To request an alternative accessible format of this document, please contact MDT's ADA Coordinator, Matt Maze, at 406-444-5416, Montana Relay Service at 711, or by email at mmaze@mt.gov.

This document is printed at state expense. Information on the cost of producing this publication may be obtained by contacting the Department of Administration.