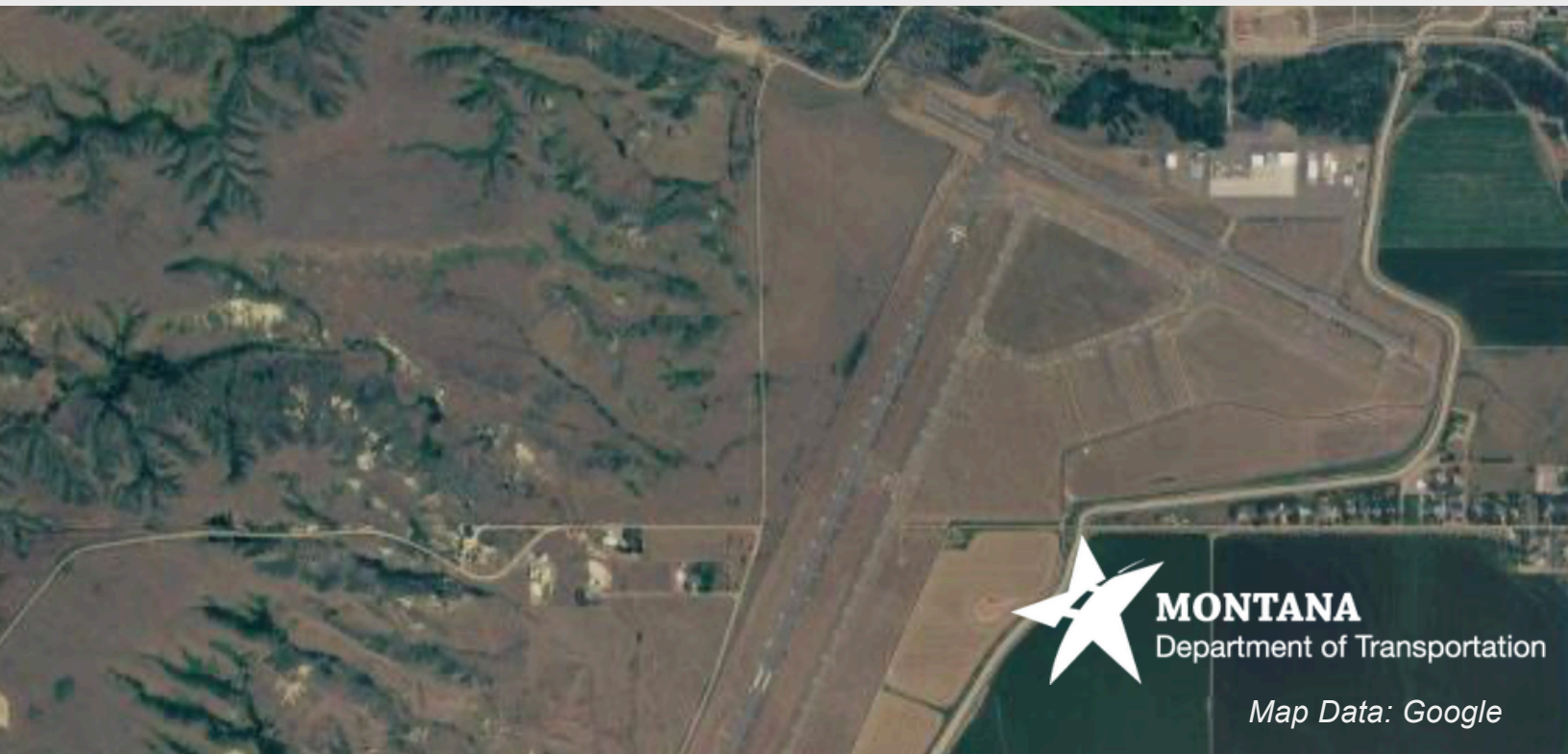




Economic Impact Study of

Sidney-Richland Regional Airport

2026

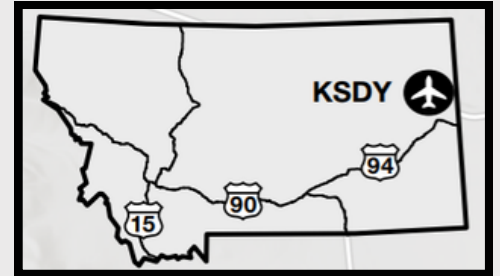


MONTANA
Department of Transportation

Map Data: Google

Sidney-Richland Regional Airport Impact

Sidney-Richland Regional Airport is a public-use commercial service airport located in Sidney, in Richland County in eastern Montana. The airport provides Essential Air Service commercial flights along with significant general aviation operations, handling approximately 6,000 GA and 14,700 commercial operations annually. The airfield features a primary runway of 5,705 feet and a shorter 4,024 foot secondary asphalt runway. The airport supports agricultural spraying, freight operations, corporate and business aviation, flight training, emergency medical transport, search and rescue, and wildland firefighting, serving as a critical facility for the energy and agriculture sectors that drive the regional economy.



Total Economic Impact on Montana



Jobs
37



Economic Impact
\$6.2 Million



Payroll
\$2.5 Million

Qualitative Impacts

In addition to generating substantial economic impacts, this airport supports a variety of harder to quantify “Qualitative Impacts” that support critical statewide safety and enterprise. The 2026 Montana Statewide Economic Impact of Airports Study documents the following non-inclusive list of qualitative impacts associated with the airport:



Aerial Firefighting
Supports Wildland
Firefighting Operations.



Police/Law Enforcement
Supports Police and Emergency
Response Ops



Emergency Medical
Aviation
Supports Air Ambulance
Operations



Military Exercise/Training
Used for Military Training
and/or Transit Flights



Corporate/Business Activity
Supports Corporate and
Business Activity



Agriculture Support
Supports Agriculture
through Aerial Application
and/or Other

Source: Montana Statewide Economic Impact of Airports.

Montana Airports Support Our State

 **Jobs**
39,400

 **Economic Impact**
\$6.4 Billion

 **Payroll**
\$2.4 Billion

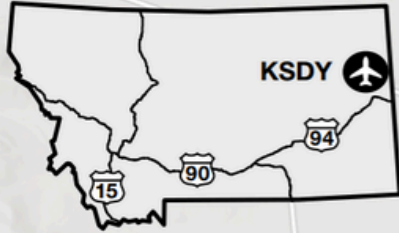
Montana's airport system functions as a critical component of the state's transportation and economic infrastructure, enabling connectivity across a large and geographically dispersed landscape. Through scheduled commercial service and general aviation activity, airports provide access between Montana communities and regional, national, and international markets, supporting passenger travel, freight movement, and time-sensitive operations that cannot be efficiently served by surface transportation alone.

Beyond mobility, Montana's airports support a broad range of economic activity that contributes to employment, income generation, and business operations throughout the state. Aviation-related enterprises, on-airport and nearby businesses, visitor spending associated with air travel, and ongoing investment in airport facilities collectively generate economic activity at the local, regional, and statewide levels. These effects extend across multiple sectors, including tourism, healthcare, construction, professional services, and natural resource industries.

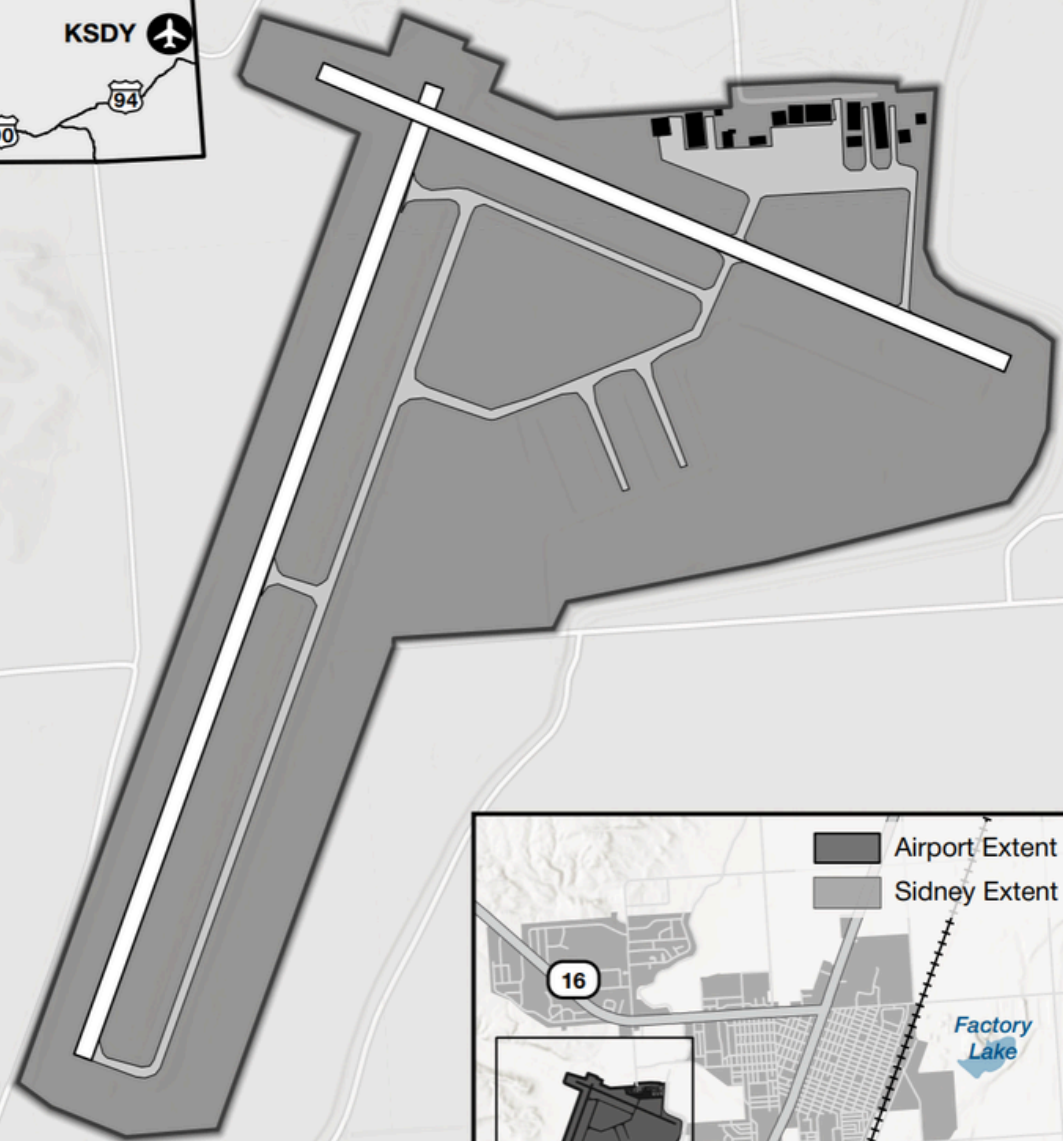
To document both the economic contributions and broader community functions of the state's aviation system, the Montana Department of Transportation undertook a comprehensive, statewide evaluation of Montana's airports. The **2026 Montana Statewide Economic Impact of Aviation** study examines the full scope of airport-related activity, including aviation and non-aviation businesses, visitor spending, capital investment, and secondary economic effects, while also identifying the specific roles individual airports play in supporting residents, businesses, and critical services across Montana.

Sidney-Richland Regional Airport (KSDY)

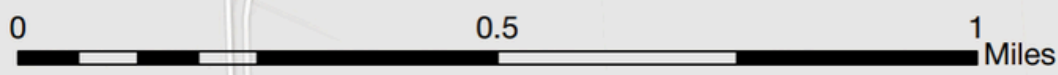
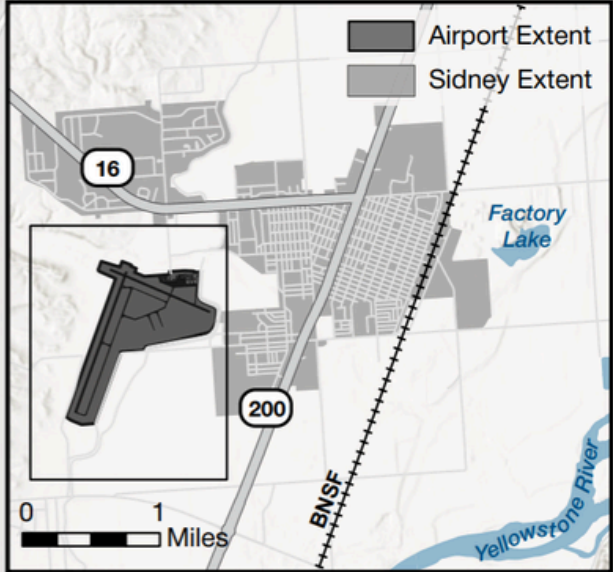
Sidney, MT



47° 42.4' N
104° 11.5' W
1984'



- Airport Extent
- Airport Structure
- Paved Runway
- Paved Area



AERONAUTICS DIVISION
2630 Airport Road
PO Box 200507
Helena, MT 59620-0507



Alternative accessible formats of this document will be provided on request. Persons who need an alternative format should contact the Civil Rights Bureau, Department of Transportation, 2701 Prospect Avenue., PO Box 201001, Helena, MT 59620. Telephone 406-444-9229. Those using a TTY may call 1(800)335-7592 or through the Montana Relay Service at 711. This document is printed at state expense. Information on the cost of producing this publication may be obtained by contacting the Department of Administration.