



Economic Impact Study
Lewistown Municipal Airport
2026



Lewistown Municipal Airport Impact

Lewistown Municipal Airport is a public-use general aviation airport located in Lewistown, in Fergus County in central Montana — the geographic center of the state. The 2,200-acre airfield features three paved runways, the primary measuring 6,100 feet with a 1,400-foot paved overrun, and handles approximately 16,800 annual operations. The airport is operated by Skyline Aviation, which provides flight training, aircraft rental, aerial tours, charters, maintenance, and a pilots lounge. Originally constructed during World War II as one of four B-17 Flying Fortress crew training facilities — and a storage site for the top-secret Norden Bombsight — the field was declared surplus in 1944 and is listed on the National Register of Historic Places. The airport hosts an annual fly-in on the second Saturday in June and offers a camping area adjacent to the field. Both 100LL and Jet A fuel are available.



Total Economic Impact on Montana



Jobs
33



Economic Impact
\$4.7 Million



Payroll
\$1.6 Million

Qualitative Impacts

In addition to generating substantial economic impacts, this airport supports a variety of harder to quantify “Qualitative Impacts” that support critical statewide safety and enterprise. The 2026 Montana Statewide Economic Impact of Airports Study documents the following non-inclusive list of qualitative impacts associated with the airport:



Military Exercise/Training
Used for Military Training and/or
Transit Flights



Flight Training & Education
Provides Pilot Training and Aviation
Education



**Emergency Medical
Aviation**
Supports Air Ambulance
Operations



Recreational Flying
Supports recreational flying and
access

Montana Airports Support Our State



Jobs
39,400



Economic Impact
\$6.4 Billion



Payroll
\$2.4 Billion

Montana's airport system functions as a critical component of the state's transportation and economic infrastructure, enabling connectivity across a large and geographically dispersed landscape. Through scheduled commercial service and general aviation activity, airports provide access between Montana communities and regional, national, and international markets, supporting passenger travel, freight movement, and time-sensitive operations that cannot be efficiently served by surface transportation alone.

Beyond mobility, Montana's airports support a broad range of economic activity that contributes to employment, income generation, and business operations throughout the state. Aviation-related enterprises, on-airport and nearby businesses, visitor spending associated with air travel, and ongoing investment in airport facilities collectively generate economic activity at the local, regional, and statewide levels. These effects extend across multiple sectors, including tourism, healthcare, construction, professional services, and natural resource industries.

To document both the economic contributions and broader community functions of the state's aviation system, the Montana Department of Transportation undertook a comprehensive, statewide evaluation of Montana's airports. The **2026 Montana Statewide Economic Impact of Aviation** study examines the full scope of airport-related activity, including aviation and non-aviation businesses, visitor spending, capital investment, and secondary economic effects, while also identifying the specific roles individual airports play in supporting residents, businesses, and critical services across Montana.

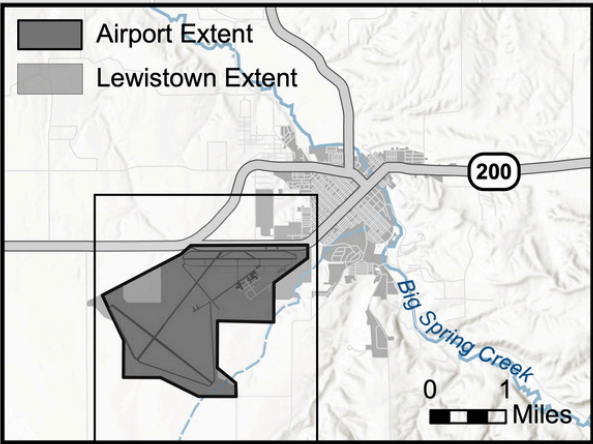
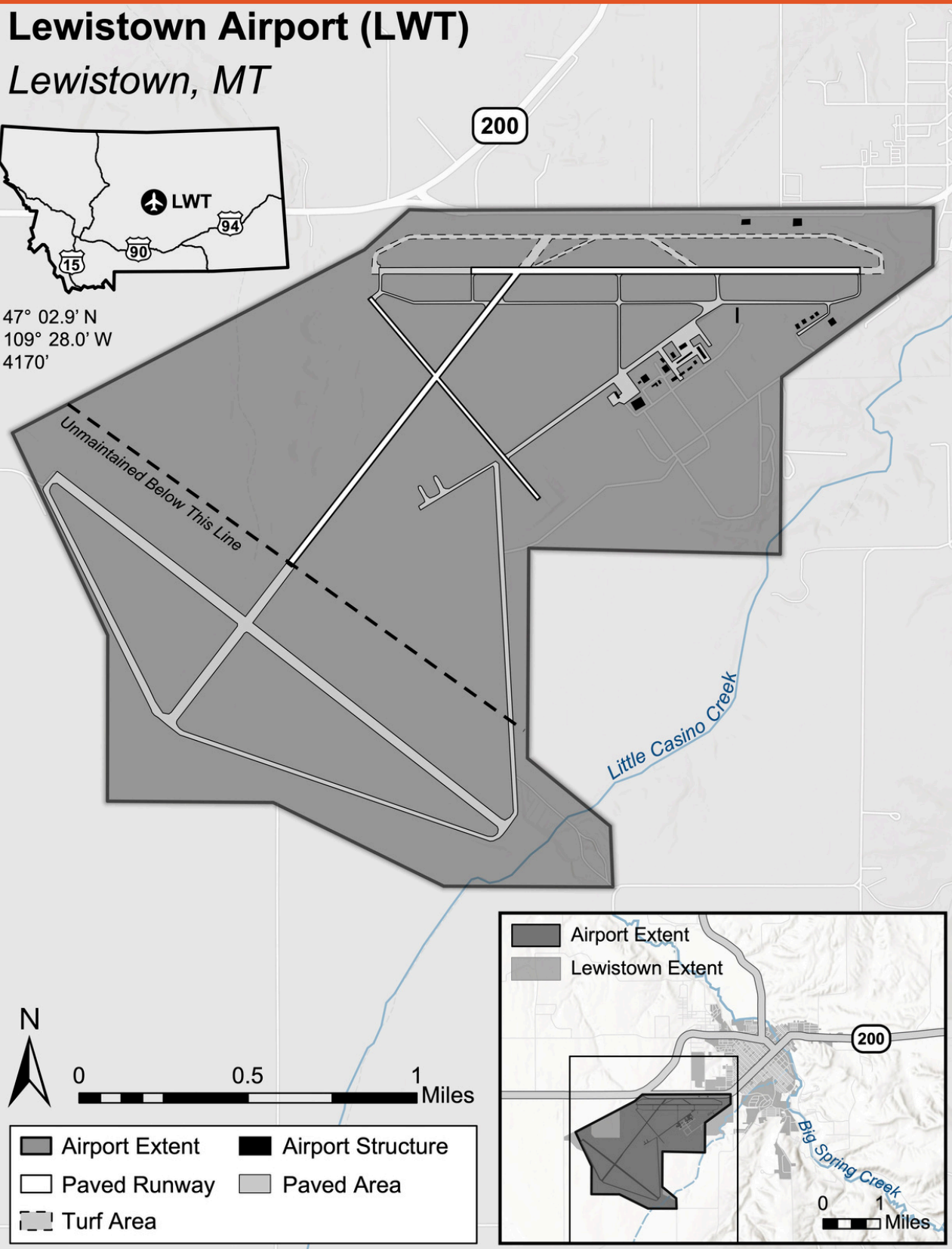


Lewistown Airport (LWT)

Lewistown, MT



47° 02.9' N
109° 28.0' W
4170'



AERONAUTICS DIVISION
2630 Airport Road
PO Box 200507
Helena, MT 59620-0507



To request an alternative accessible format of this document, please contact MDT's ADA Coordinator, Matt Maze, at 406-444-5416, Montana Relay Service at 711, or by email at mmaze@mt.gov.

This document is printed at state expense. Information on the cost of producing this publication may be obtained by contacting the Department of Administration.