



Economic Impact Study of
Glacier Park International Airport
2026



Glacier Park International Airport Impact

Glacier Park International Airport is a public-use commercial service airport located in Kalispell, approximately six miles northeast of the city center in Flathead County. The airport serves northwest Montana with scheduled passenger air service, general aviation activity, and air cargo operations. The airfield includes two runways, anchored by a primary runway of 9,007 feet that accommodates commercial jet aircraft, along with a shorter 3,521 foot crosswind runway for general aviation. Terminal facilities support airline operations, passenger services, and rental car activity, while on-airport tenants provide fueling, maintenance, and other aviation services.

Economically, the airport is one of the most impactful aviation facilities in Montana. Its operations directly support employment through airport administration, airlines, and aviation service providers, while visitor arrivals generate substantial spending tied to tourism, business travel, and regional recreation as the primary gateway to Glacier National Park. The airport also supports broader economic activity by improving access to Flathead County's workforce, businesses, and institutions.

Total Economic Impact on Montana



Jobs
7,693



Economic Impact
\$1.1 Billion



Payroll
\$412.7 Million

Qualitative Impacts

In addition to generating substantial economic impacts, this airport supports a variety of harder to quantify “Qualitative Impacts” that support critical statewide safety and enterprise. The 2026 Montana Statewide Economic Impact of Airports Study documents the following non-inclusive list of qualitative impacts associated with the airport:



Aerial Firefighting
Supports Wildland
Firefighting Operations.



Police/Law Enforcement
Supports Police and Emergency
Response Ops



**Emergency Medical
Aviation**
Supports Air Ambulance
Operations



Military Exercise/Training
Used for Military Training
and/or Transit Flights



Search & Rescue
Supports Search and
Rescue Operations



Air Cargo & Logistics
Facilitates Freight and Cargo
Transport Operations

Source: Montana Statewide Economic Impact of Airports.

Montana Airports Support Our State



Jobs
39,400



Economic Impact
\$6.4 Billion



Payroll
\$2.4 Billion

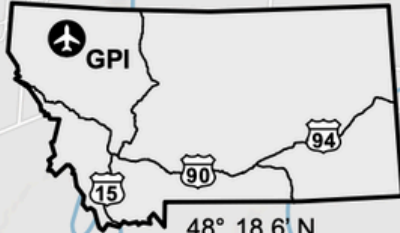
Montana's airport system functions as a critical component of the state's transportation and economic infrastructure, enabling connectivity across a large and geographically dispersed landscape. Through scheduled commercial service and general aviation activity, airports provide access between Montana communities and regional, national, and international markets, supporting passenger travel, freight movement, and time-sensitive operations that cannot be efficiently served by surface transportation alone.

Beyond mobility, Montana's airports support a broad range of economic activity that contributes to employment, income generation, and business operations throughout the state. Aviation-related enterprises, on-airport and nearby businesses, visitor spending associated with air travel, and ongoing investment in airport facilities collectively generate economic activity at the local, regional, and statewide levels. These effects extend across multiple sectors, including tourism, healthcare, construction, professional services, and natural resource industries.

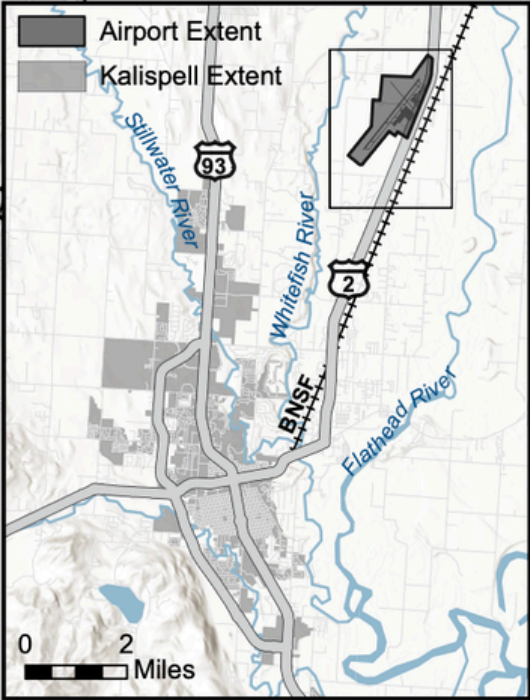
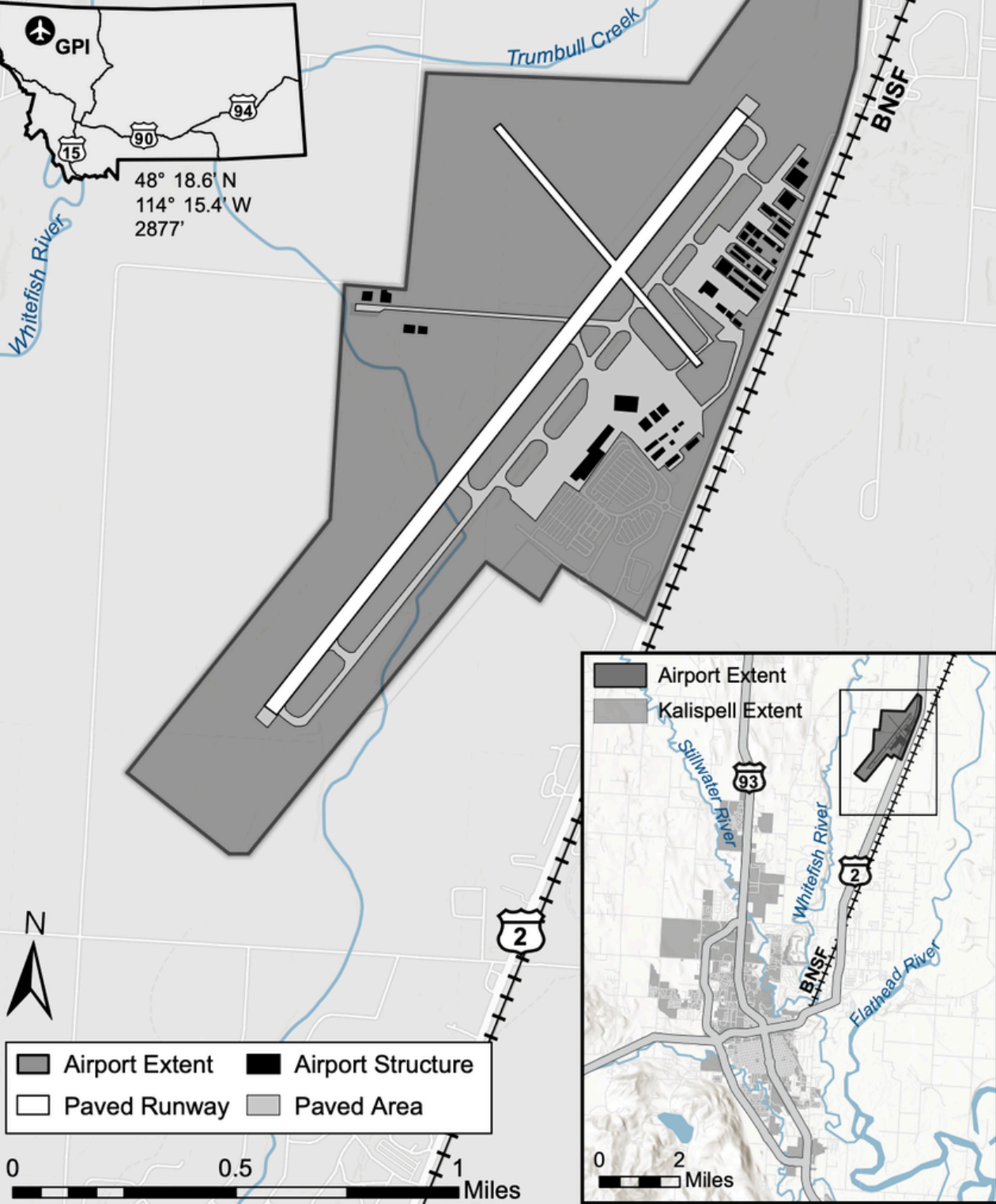
To document both the economic contributions and broader community functions of the state's aviation system, the Montana Department of Transportation undertook a comprehensive, statewide evaluation of Montana's airports. The **2026 Montana Statewide Economic Impact of Aviation** study examines the full scope of airport-related activity, including aviation and non-aviation businesses, visitor spending, capital investment, and secondary economic effects, while also identifying the specific roles individual airports play in supporting residents, businesses, and critical services across Montana.

Glacier Park International Airport (GPI)

Kalispell, MT



48° 18.6' N
114° 15.4' W
2877'



- Airport Extent
- Airport Structure
- Paved Runway
- Paved Area

0 0.5 1 Miles

0 2 Miles

AERONAUTICS DIVISION
2630 Airport Road
PO Box 200507
Helena, MT 59620-0507



Alternative accessible formats of this document will be provided on request. Persons who need an alternative format should contact the Civil Rights Bureau, Department of Transportation, 2701 Prospect Avenue., PO Box 201001, Helena, MT 59620. Telephone 406-444-9229. Those using a TTY may call 1(800)335-7592 or through the Montana Relay Service at 711. This document is printed at state expense. Information on the cost of producing this publication may be obtained by contacting the Department of Administration.