



Economic Impact Study  
**Dawson Community Airport**  
2026



**MONTANA**  
Department of Transportation



# Dawson Community Airport Impact

Dawson Community Airport is a public-use commercial service airport located in Glendive, Dawson County in eastern Montana. The airfield features two paved runways, the primary measuring 5,704 feet, and handles approximately 450 general aviation and 2,100 commercial operations annually. Cape Air provides scheduled Essential Air Service to Billings Logan International Airport, and Alpine Aviation operates UPS cargo flights five days per week using Beech 1900 aircraft. Airport activities include recreational flying, search and rescue, freight, emergency medical transport — averaging six to eight flights per week — corporate and business aviation, pipeline patrol under contract with two local pipeline operators, and wildland firefighting. The airport has also hosted community events including a bicycle event, fire department training, and emergency services simulations.



## Total Economic Impact on Montana



**Jobs**  
14



**Economic Impact**  
\$2.4 Million



**Payroll**  
\$742 Thousand

## Qualitative Impacts

In addition to generating substantial economic impacts, this airport supports a variety of harder to quantify “Qualitative Impacts” that support critical statewide safety and enterprise. The 2026 Montana Statewide Economic Impact of Airports Study documents the following non-inclusive list of qualitative impacts associated with the airport:



**Search & Rescue**  
Supports Search and Rescue Operations



**Corporate/Business Activity**  
Supports Various business activity such as oil and gas field activities



**Emergency Medical Aviation**  
Supports Air Ambulance Operations



**Air Cargo & Logistics**  
Facilitates Freight and Cargo Transport Operations



**Aerial Firefighting**  
Supports Wildland Firefighting Operations.



**Aerial Inspections**  
Supports Pipeline, Utility, and Infrastructure Inspections

*Source: Montana Statewide Economic Impact of Airports.*

# Montana Airports Support Our State



**Jobs**  
39,400



**Economic Impact**  
\$6.4 Billion



**Payroll**  
\$2.4 Billion

Montana's airport system functions as a critical component of the state's transportation and economic infrastructure, enabling connectivity across a large and geographically dispersed landscape. Through scheduled commercial service and general aviation activity, airports provide access between Montana communities and regional, national, and international markets, supporting passenger travel, freight movement, and time-sensitive operations that cannot be efficiently served by surface transportation alone.

Beyond mobility, Montana's airports support a broad range of economic activity that contributes to employment, income generation, and business operations throughout the state. Aviation-related enterprises, on-airport and nearby businesses, visitor spending associated with air travel, and ongoing investment in airport facilities collectively generate economic activity at the local, regional, and statewide levels. These effects extend across multiple sectors, including tourism, healthcare, construction, professional services, and natural resource industries.

To document both the economic contributions and broader community functions of the state's aviation system, the Montana Department of Transportation undertook a comprehensive, statewide evaluation of Montana's airports. The **2026 Montana Statewide Economic Impact of Aviation** study examines the full scope of airport-related activity, including aviation and non-aviation businesses, visitor spending, capital investment, and secondary economic effects, while also identifying the specific roles individual airports play in supporting residents, businesses, and critical services across Montana.



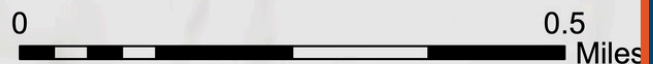
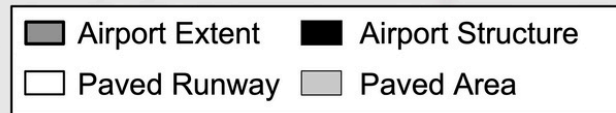
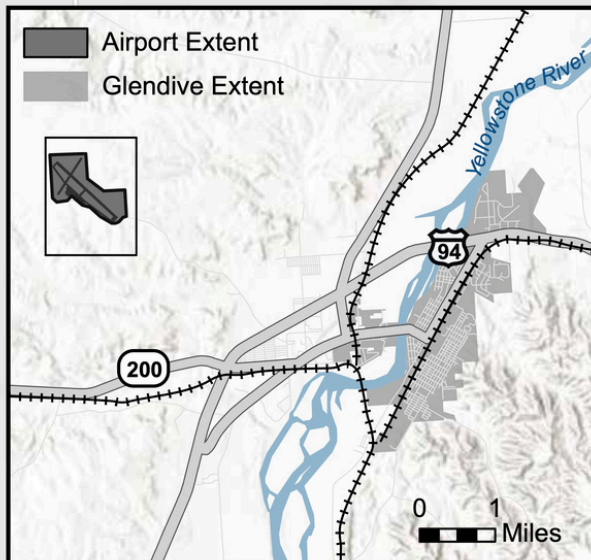
*Source: Montana Statewide Economic Impact of Airports.*

# Dawson Community Airport (GDV)

Glendive, MT



47° 08.3' N  
104° 48.4' W  
2458'



AERONAUTICS DIVISION  
2630 Airport Road  
PO Box 200507  
Helena, MT 59620-0507



To request an alternative accessible format of this document, please contact MDT's ADA Coordinator, Matt Maze, at 406-444-5416, Montana Relay Service at 711, or by email at [mmaze@mt.gov](mailto:mmaze@mt.gov).

This document is printed at state expense. Information on the cost of producing this publication may be obtained by contacting the Department of Administration.