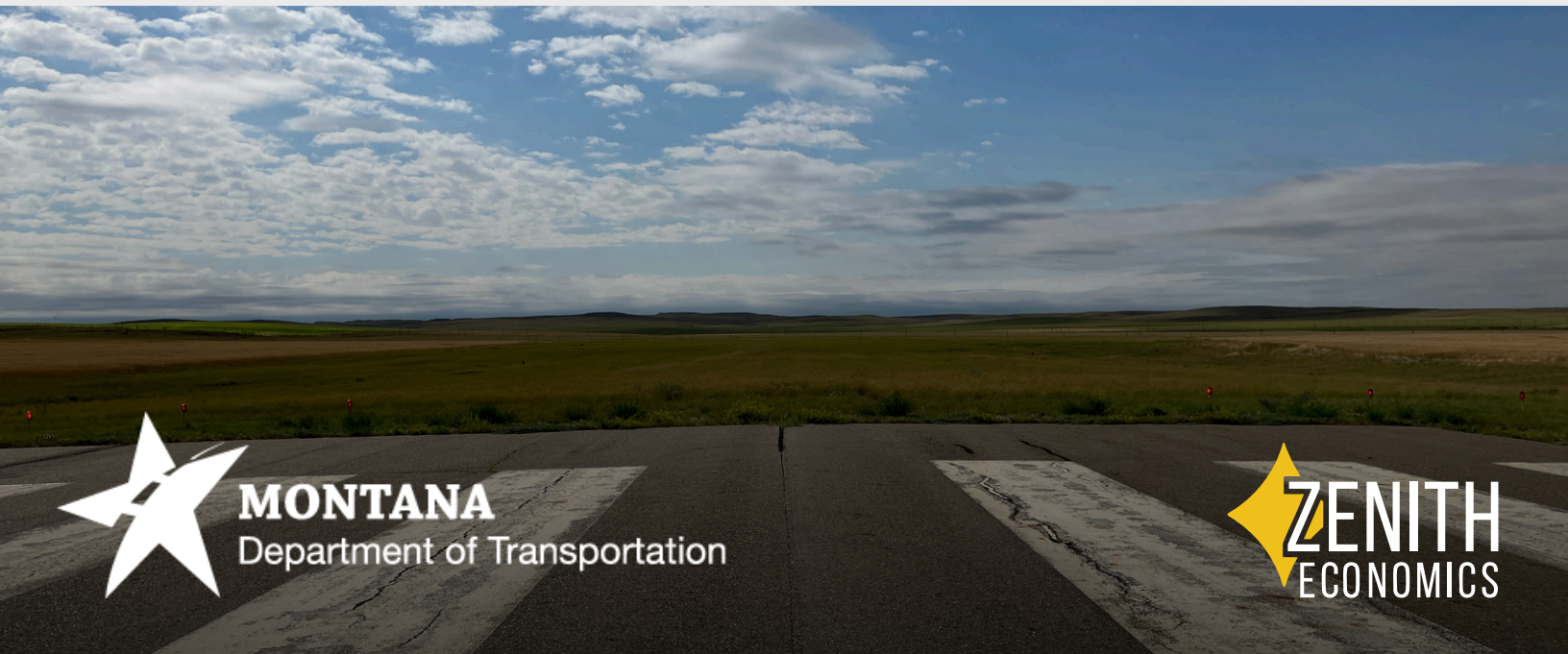




Economic Impact Study  
**Circle Town County Airport**  
2026

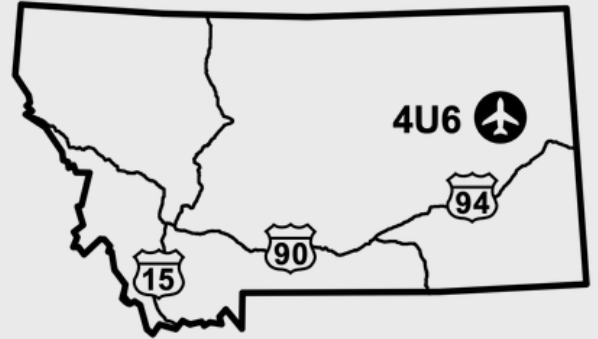


**MONTANA**  
Department of Transportation



# Circle Town County Airport Impact

Circle Town County Airport is a public-use general aviation airport located one mile east of Circle, in McCone County in eastern Montana. The airfield features a primary paved runway of 4,100 feet with GPS instrument approaches, a secondary turf runway, and is home to Circle Aviation, which provides full-service fuel and major airframe and powerplant repair. The airport is staffed weekdays and supports general aviation activity for this rural agricultural community, providing access for recreational flying, emergency services, and agricultural operations in an isolated region where ground travel distances to larger communities are significant.



## Total Economic Impact on Montana



**Economic Impact**  
\$59 Thousand



**Payroll**  
\$16 Thousand

## Qualitative Impacts

In addition to generating substantial economic impacts, this airport supports a variety of harder to quantify “Qualitative Impacts” that support critical statewide safety and enterprise. The 2026 Montana Statewide Economic Impact of Airports Study documents the following non-inclusive list of qualitative impacts associated with the airport:



**Recreational Flying**  
Supports recreational flying and access



**Emergency Medical Aviation**  
Supports Air Ambulance Operations



**Corporate/Business Activity**

Supports corporate and business aviation with full-service fuel, major maintenance, and instrument approaches serving the regional agricultural and energy economy.

# Montana Airports Support Our State



**Jobs**  
39,400



**Economic Impact**  
\$6.4 Billion



**Payroll**  
\$2.4 Billion

Montana's airport system functions as a critical component of the state's transportation and economic infrastructure, enabling connectivity across a large and geographically dispersed landscape. Through scheduled commercial service and general aviation activity, airports provide access between Montana communities and regional, national, and international markets, supporting passenger travel, freight movement, and time-sensitive operations that cannot be efficiently served by surface transportation alone.

Beyond mobility, Montana's airports support a broad range of economic activity that contributes to employment, income generation, and business operations throughout the state. Aviation-related enterprises, on-airport and nearby businesses, visitor spending associated with air travel, and ongoing investment in airport facilities collectively generate economic activity at the local, regional, and statewide levels. These effects extend across multiple sectors, including tourism, healthcare, construction, professional services, and natural resource industries.

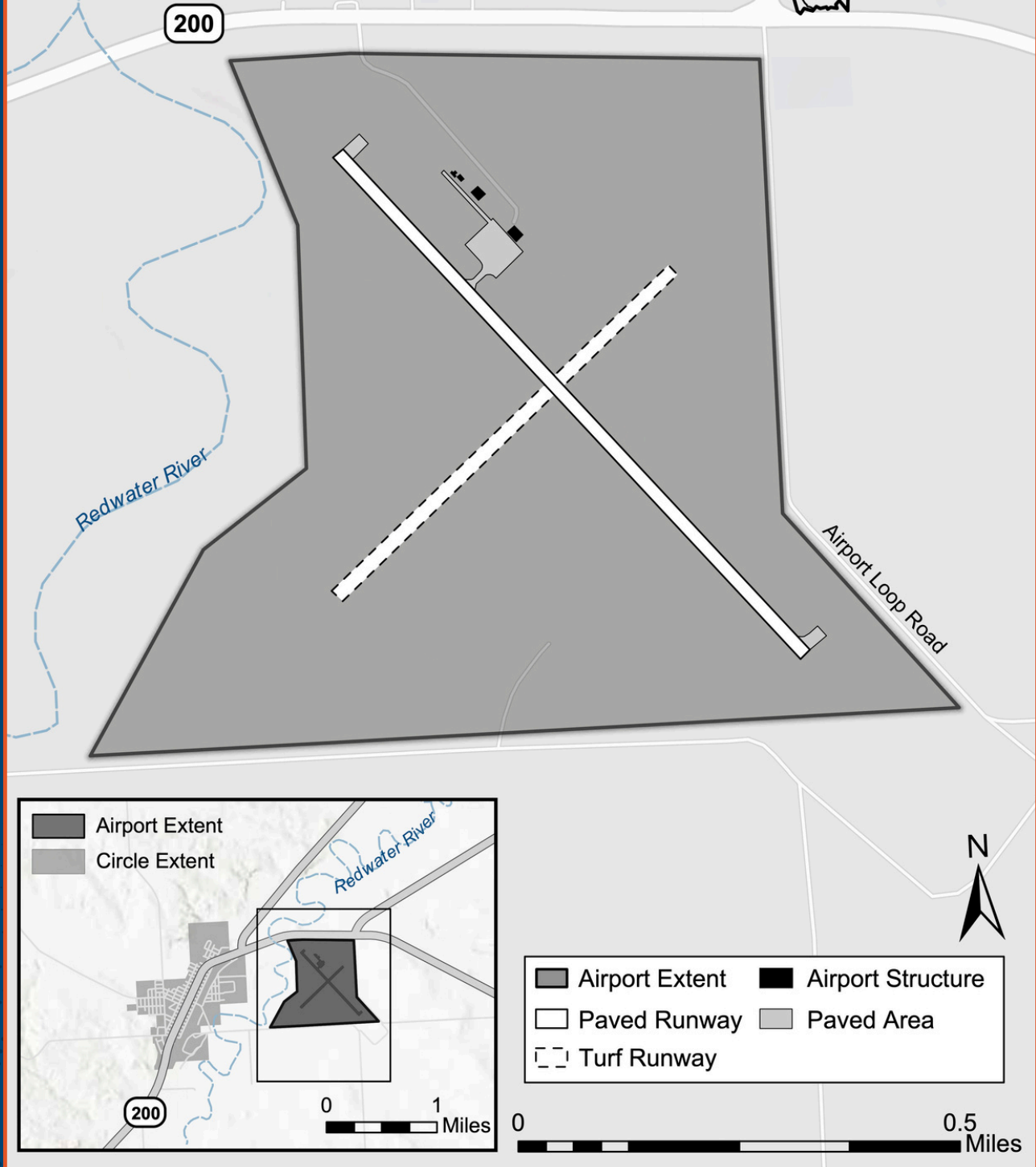
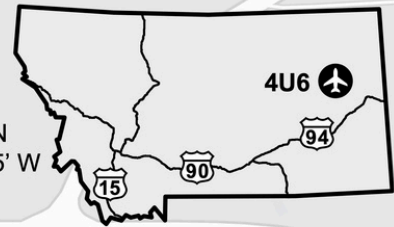
To document both the economic contributions and broader community functions of the state's aviation system, the Montana Department of Transportation undertook a comprehensive, statewide evaluation of Montana's airports. The **2026 Montana Statewide Economic Impact of Aviation** study examines the full scope of airport-related activity, including aviation and non-aviation businesses, visitor spending, capital investment, and secondary economic effects, while also identifying the specific roles individual airports play in supporting residents, businesses, and critical services across Montana.



# Circle Town County Airport (4U6)

Circle, MT

47° 25.1' N  
105° 33.65' W  
2441'



AERONAUTICS DIVISION  
2630 Airport Road  
PO Box 200507  
Helena, MT 59620-0507



To request an alternative accessible format of this document, please contact MDT's ADA Coordinator, Matt Maze, at 406-444-5416, Montana Relay Service at 711, or by email at [mmaze@mt.gov](mailto:mmaze@mt.gov).

This document is printed at state expense. Information on the cost of producing this publication may be obtained by contacting the Department of Administration.