



Economic Impact Study of  
**Bozeman Yellowstone  
International Airport**

2026



**MONTANA**  
Department of Transportation

# Bozeman Yellowstone International Airport Impact

Bozeman Yellowstone International Airport is a public-use commercial service airport located in Bozeman, in Gallatin County. The airport is the busiest in Montana, serving over 1.2 million enplaned passengers annually with scheduled service to destinations across the country. The airfield features three runways, with lengths of 8,994, 5,050, and 2,650 feet, accommodating a wide range of commercial and general aviation aircraft. Terminal facilities support airline operations, rental car services, and passenger amenities.

The airport functions as a major economic engine for southwest Montana, with over 1,400,000 annual commercial enplanements and 100,000 annual general aviation operations reflecting strong corporate, recreational, and visitor activity. Its proximity to Bozeman, Big Sky Resort, Yellowstone National Park, and Montana State University drives substantial tourism and business travel, while wildfire support, search and rescue, and emergency medical aviation serve broader regional needs. Bozeman has far and away the largest statewide economic impact of any Montana airport - about 1/3 of total systemwide jobs, output, and payroll.

## Total Economic Impact on Montana



**Jobs**  
13,402



**Economic Impact**  
\$2.2 Billion



**Payroll**  
\$808.1 Million

## Qualitative Impacts

In addition to generating substantial economic impacts, this airport supports a variety of harder to quantify “Qualitative Impacts” that support critical statewide safety and enterprise. The 2026 Montana Statewide Economic Impact of Airports Study documents the following non-inclusive list of qualitative impacts associated with the airport:



**Aerial Firefighting**  
Supports Wildland  
Firefighting Operations.



**Police/Law Enforcement**  
**Supports** Police and Emergency  
Response Ops



**Emergency Medical  
Aviation**  
Supports Air Ambulance  
Operations



**Military Exercise/Training**  
Used for Military Training  
and/or Transit Flights



**Search & Rescue**  
Supports Search and  
Rescue Operations



**Air Cargo & Logistics**  
Facilitates Freight and Cargo  
Transport Operations

*Source: Montana Statewide Economic Impact of Airports.*

# Montana Airports Support Our State



**Jobs**  
39,400



**Economic Impact**  
\$6.4 Billion



**Payroll**  
\$2.4 Billion

Montana's airport system functions as a critical component of the state's transportation and economic infrastructure, enabling connectivity across a large and geographically dispersed landscape. Through scheduled commercial service and general aviation activity, airports provide access between Montana communities and regional, national, and international markets, supporting passenger travel, freight movement, and time-sensitive operations that cannot be efficiently served by surface transportation alone.

Beyond mobility, Montana's airports support a broad range of economic activity that contributes to employment, income generation, and business operations throughout the state. Aviation-related enterprises, on-airport and nearby businesses, visitor spending associated with air travel, and ongoing investment in airport facilities collectively generate economic activity at the local, regional, and statewide levels. These effects extend across multiple sectors, including tourism, healthcare, construction, professional services, and natural resource industries.

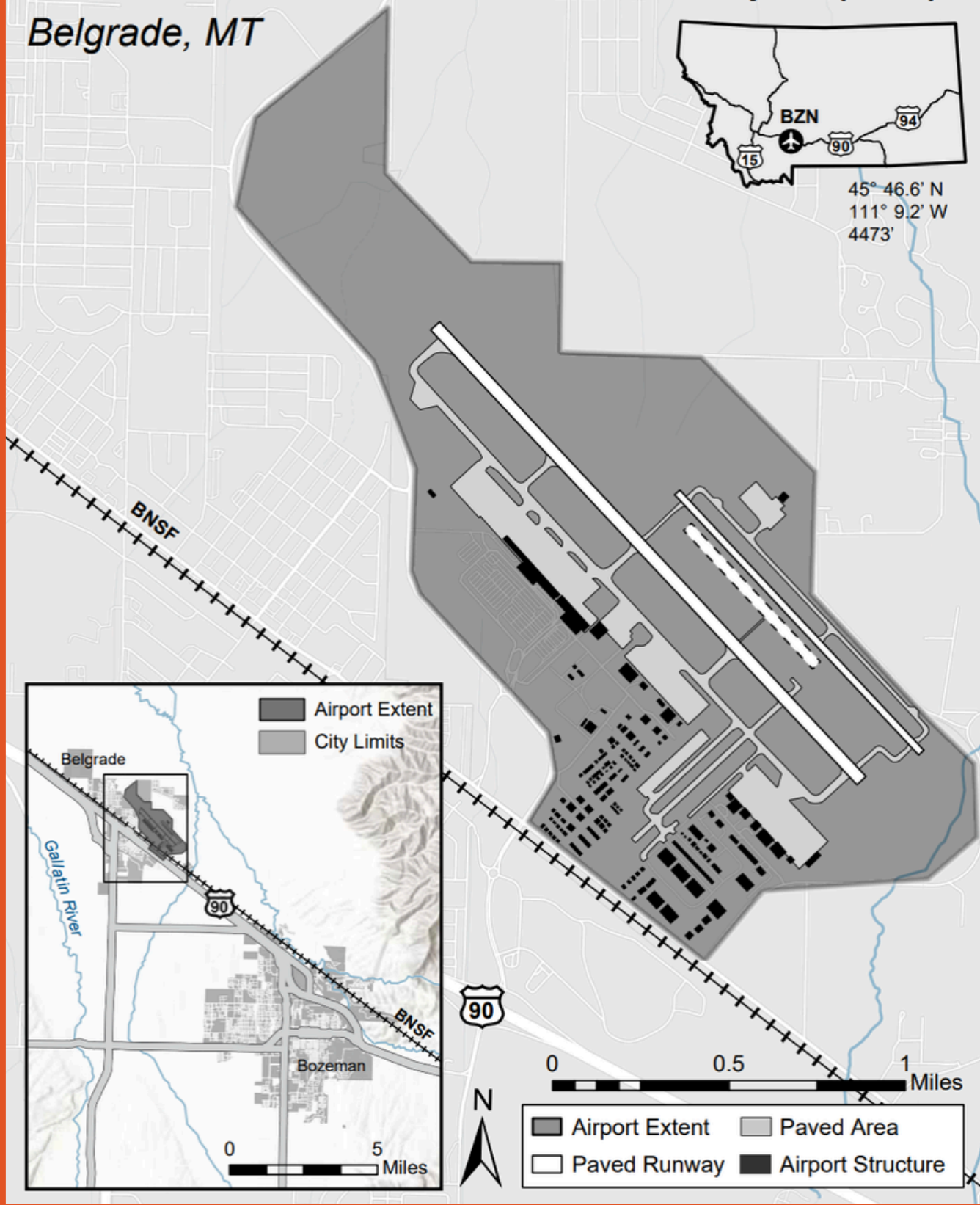
To document both the economic contributions and broader community functions of the state's aviation system, the Montana Department of Transportation undertook a comprehensive, statewide evaluation of Montana's airports. The **2026 Montana Statewide Economic Impact of Aviation** study examines the full scope of airport-related activity, including aviation and non-aviation businesses, visitor spending, capital investment, and secondary economic effects, while also identifying the specific roles individual airports play in supporting residents, businesses, and critical services across Montana.

# Bozeman Yellowstone International Airport (BZN)

Belgrade, MT



45° 46.6' N  
111° 9.2' W  
4473'



AERONAUTICS DIVISION  
2630 Airport Road  
PO Box 200507  
Helena, MT 59620-0507



Alternative accessible formats of this document will be provided on request. Persons who need an alternative format should contact the Civil Rights Bureau, Department of Transportation, 2701 Prospect Avenue., PO Box 201001, Helena, MT 59620. Telephone 406-444-9229. Those using a TTY may call 1(800)335-7592 or through the Montana Relay Service at 711. This document is printed at state expense. Information on the cost of producing this publication may be obtained by contacting the Department of Administration.