

Community Transportation Safety Plans



Overview

- What is Safety Planning?
- Montana's Comprehensive Highway Safety Plan (CHSP)
- Community Transportation Safety Planning Assistance
 - Technical & Financial Assistance
 - Planning Process
 - Application Process

Safety Planning

- Safety planning focuses on analysis of crash data to help identify and prevent crashes related to driver behavior as well as transportation infrastructure.
- To be effective, the process needs to be data driven, comprehensive in collaborating the 4E's of safety, and be a coordinated effort to address safety issues.

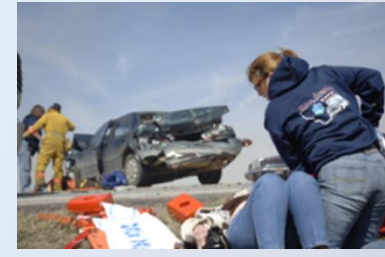
Crash Data Analysis

- Causal factors
 - Driver
 - Vehicle
 - Environment
- Severity
 - Fatal
 - Injury
 - Property damage crashes
- Crash types
 - Alcohol involved crashes
 - Run off the Road crashes
 - High crash locations



4 E's of Safety

- Education
- Enforcement
- Engineering
- Emergency Medical Service



Transportation Users & Vehicle Types

- All Users
 - Young Drivers
 - Older Drivers
 - Commercial Drivers
 - Bicyclist & Pedestrians
- Vehicle Types
 - Passenger cars
 - Large trucks
 - Motorcycles
 - Transit/buses
- Driver Behavior
 - Inexperience
 - Speeding
 - Distracted driving
 - Impaired driving
 - Lack of safety restraints



Montana Comprehensive Highway Safety Plan (CHSP)

Montana Comprehensive Highway Safety Plan

Amended 2010



State of Montana Department of Transportation



in cooperation with:

Federal Highway Administration
National Highway Traffic Safety Administration
Blackfeet Tribe
Confederated Salish and Kootenai Tribes
Crow Tribe
Chippewa Cree Tribe
Little Shell Tribe
Northern Cheyenne Tribe
Fort Peck Tribes
Montana Highway Patrol
Montana Motor Vehicle Division
Montana Office of Public Instruction
Montana Department of Justice
Montana Department of Revenue
Office of the Court Administrator
Federal Motor Carrier Administration
Montana Metropolitan Planning Organizations
Montana Department of Public Health and Human Services

prepared by:

Cambridge Systematics, Inc.

- Initiated in 2006 and amended in 2010
- Collaborative and data driven
- 12 Emphasis Areas
- Vision: “All Highway Users Arrive Safely at their Destination”

<http://www.mdt.mt.gov/safety/plans-programs/chsp.shtml>

CHSP Partners

Success Through Partnerships



epi.mt.gov



Local law enforcement



Governor's Interagency
Coordinating Council



Montana's sovereign
tribal nations



REVENUE



MDT

Annual meeting

Comprehensive Highway Safety
Plan

June 8-9, 2011



Missoula City-County Health Dept.

The MONTANA LEGISLATURE

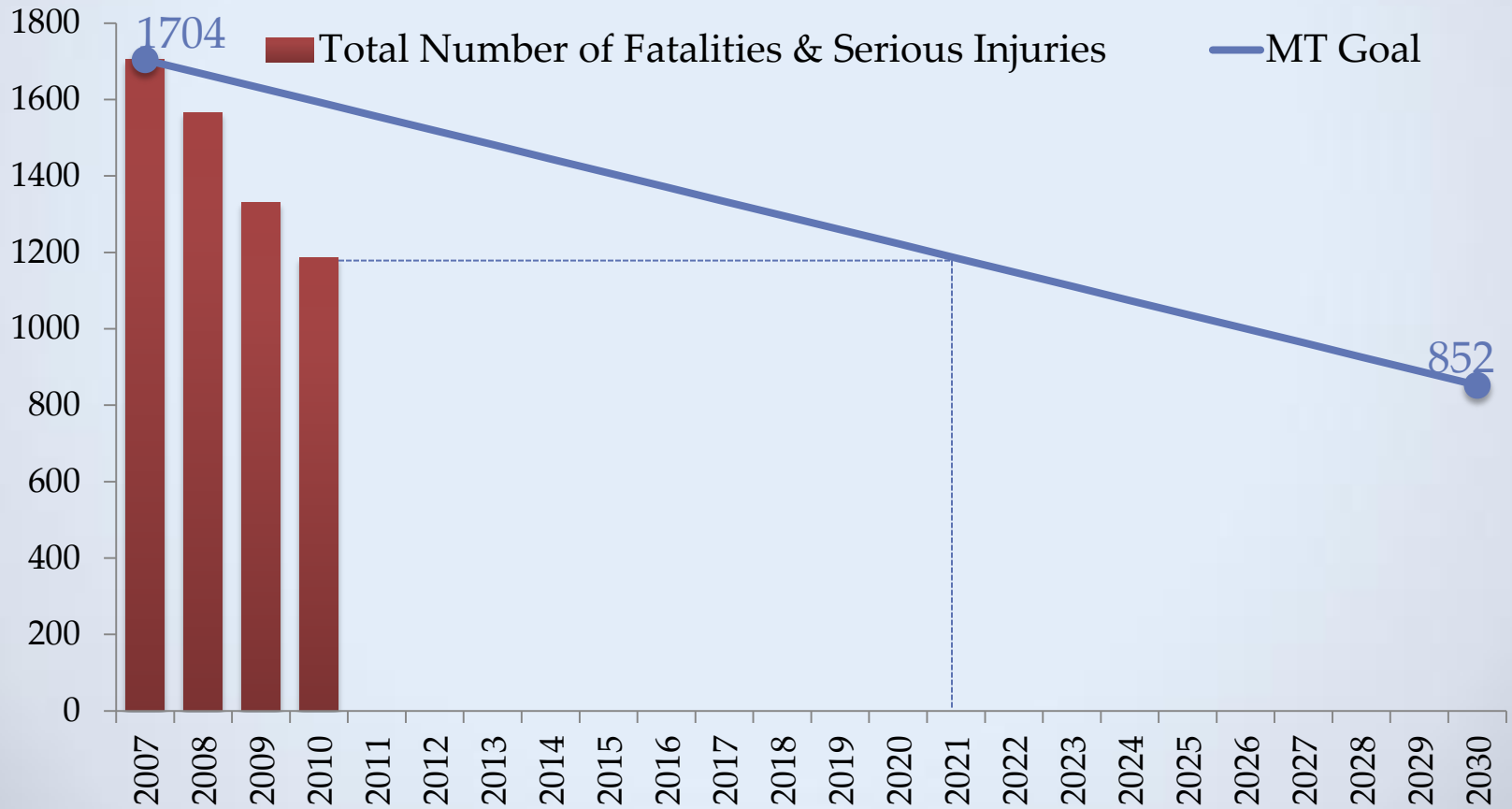
COUNTY DUI TASK FORCES

preventing impaired driving and crashes



Goal of the CHSP

To reduce *fatalities and incapacitating injuries in the State of Montana by half in two decades (from 1,704 in 2007 to 852 by 2030).*



Montana's Progress

	2007	2008	2009	2010
Fatalities	277	229	221	189
Motorcycle	37	37	27	26
Pedestrian	15	11	16	8
Bicycle	4	3	1	0
Alcohol Involved	107	91	93	54
Seat Belt <u>not</u> used	173	137	125	117

- 2007 data is from FARS and includes police accident report, investigation report, toxicology test results and death certificates
- 2008 & 2009 data is taken from MHP information initially collected at the scene of the crash and is considered preliminary until FARS data becomes available

Addressing Safety at the Local Level

MDT developed a program to provide technical and financial assistance to local communities for the development of Community Transportation Safety Plans (CTSP).

- MDT pays for the Safety Plan
- MDT posts RFP
- MDT holds contract w/ consultant
 - No paperwork
 - No invoices
 - No submittals

Community Transportation Safety Plans

- Coordinate and collaborate effort of community safety stakeholders
- Identify primary safety concerns
- Prioritize projects and programs and help identify potential partners
- Improve safety, save lives, and reduce crashes and injuries.

Community Transportation Safety Plans

- Community led
- Address the most critical safety issues faced by travelers in your community.
- Considers driver behavior as well as infrastructure
- Go beyond constructing or reconstructing a roadway.



MDT Technical & Financial Assistance

MDT provides:

- Data Analysis
- Direct involvement in planning process to answer questions and provide expertise
- Consultant services
- 100% federal funding for development of the plan

Community Developed

- Development of a standing safety committee
- Analyze crash data provided
- Identify areas of safety concerns
- Participate in Community Summit
- Determine safety strategies to address issues
- Review draft Safety Plan
- Support adoption & implementation of Safety Plan
- Provide progress follow-up to Plan Sponsor

Potential Community Partners

- Transportation Planners & Engineers
- City/ County Public Works/ Roads Dept.
- City & County council members,
- Local trucking & construction firms,
- Emergency Medical Services
- Senior Centers/ Hospital/Injury Prevention
- School Districts/ Administration/Buses
- Local Law Enforcement/ Court System
- Local Buckle Up Coordinators/ DUI Task Force
- Council on Aging
- Transit operators
- Business owners/ Bicycle shops/Chamber of Commerce
- Others



CTSP Planning Process

- Identify a Plan Sponsor
- Establish a Safety Committee
 - Review community crash data and trends
 - Establish an overall goal
 - Identify emphasis areas and action plan
 - Develop an implementation plan and reporting/monitoring process



Adoption & Monitoring Progress

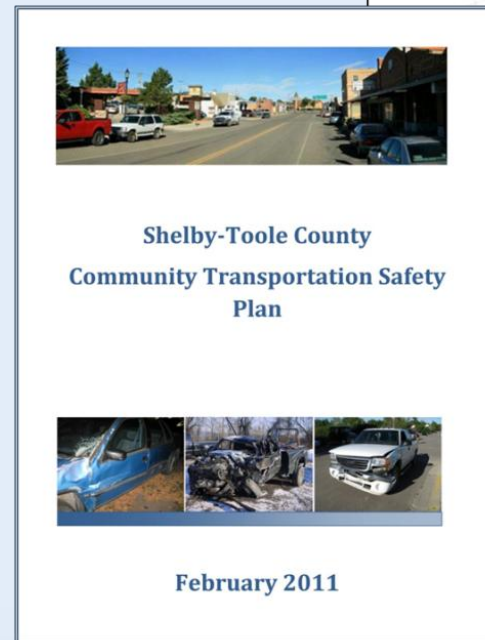
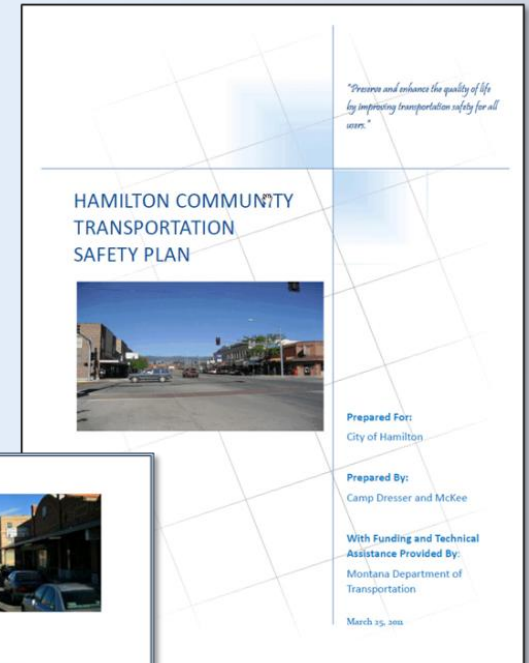
Plan is taken before the local city council for adoption to formalize priorities for the community and to provide support towards implementing the CTSP strategies.

Monitoring involves tracking and reporting strategy progress annually to MDT.

Completed Plans

- “ We had a great community response and participation. The process served to bring a unique group of individuals together that might not have happened otherwise (to discuss community transportation safety issues) .”

-Larry Bonderud
Mayor of Shelby



Application Process

- Submit a written request to MDT for technical and financial assistance, signed by the Mayor and the plan sponsor that:
 - Describes the perceived safety issues in the community
 - Describes how a safety plan would benefit the community
 - Identifies a “**plan sponsor**” with a role and commitment to implement safety plan
- Provide letters of support from local safety stakeholders

Summary

Transportation Safety Planning is a coordinated and collaborative approach to addressing transportation safety in your community.

- Ensures the development of a workable implementation plan
- Combines resources, saving time and money
- Improves safety and reduces serious and fatal crashes in your community

A Community Transportation Safety Plan can help reduce serious injury crashes and save lives in your community.

Additional Information

Community Transportation Safety Planning,

<http://www.mdt.mt.gov/safety/plans-programs/community-plans.shtml>

Carol Strizich, Planner

Phone: 406-444-9240

cstrizich@mt.gov

Pam Langve-Davis, Planner

Phone : 406-444-7646

plangvedavis@mt.gov

Submit requests to:

Attn: Pam Langve-Davis

Montana Department of Transportation

Rail , Transit & Planning

PO BOX 201001

Helena, MT 59620-1001