

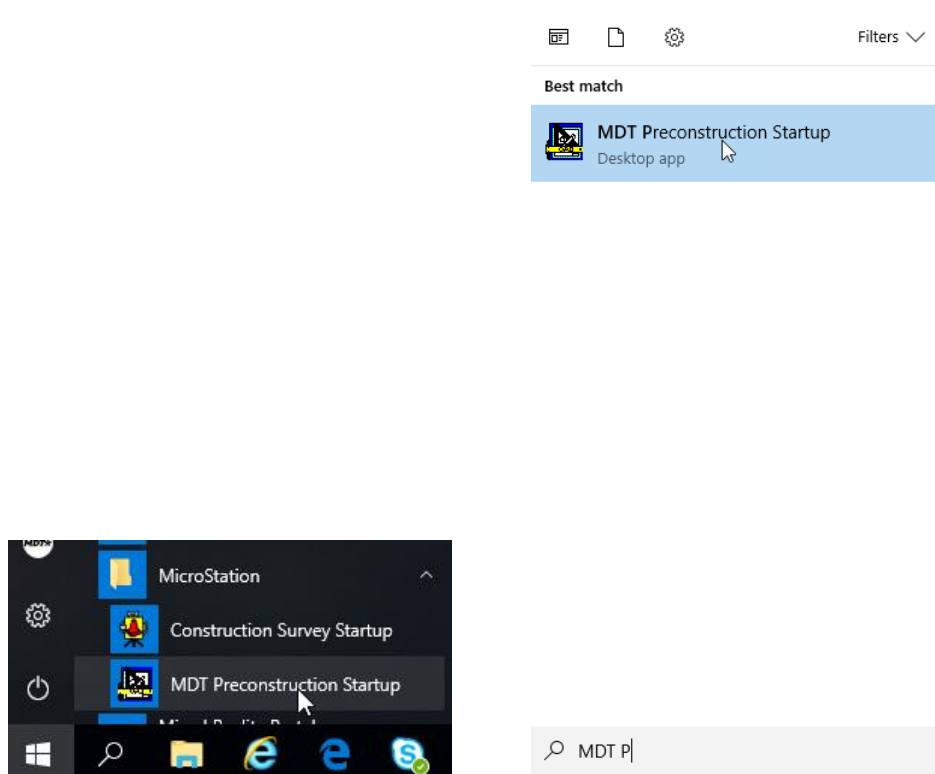
Preconstruction Startup

Table of Contents

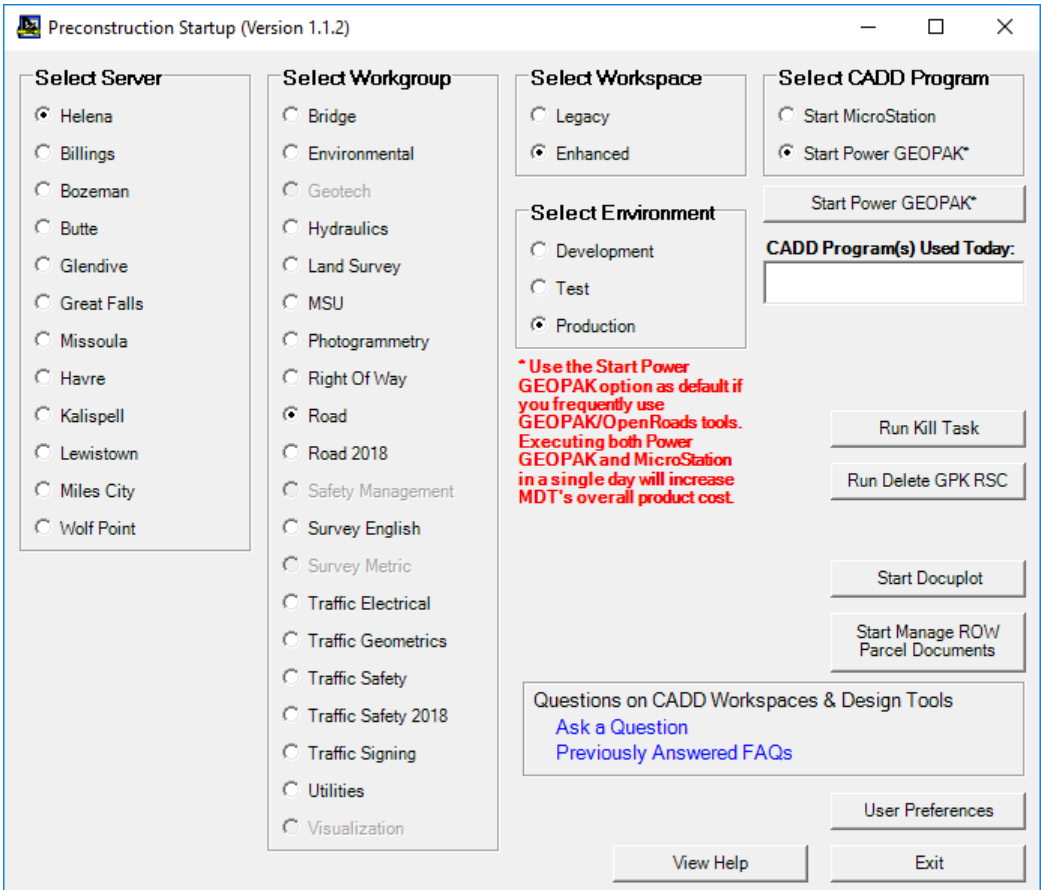
Accessing Preconstruction Startup	2
User Preferences	4
Starting MicroStation	5
Starting Power GEOPAK	10
Starting Docuplot	15
Starting Manage ROW Parcel Documents	20

Accessing Preconstruction Startup:

To start the application, select the **MDT Preconstruction Startup** icon from the **MicroStation** Program Group or start typing **MDT Preconstruction Startup** in the **Search Windows** text box and then select the **MDT Preconstruction Startup** item in the **Best match** list, as shown below:



The **Preconstruction Startup** program will start, displaying the main form as shown below:



User Preferences:

The **User Preferences** button can be used to set and save your default CADD Program, Server, Workspace, Workgroup and Environment preferences so that they are set automatically when the program starts, as shown below:

Preconstruction Startup User Options

Default CADD Program: **Select Power GEOPAK as your Default CADD Program if you frequently use GEOPAK/OpenRoads tools.**
Power GEOPAK

Default Server:
Helena

Default Workspace:
Enhanced

Default Workgroup:
Road

Default Environment:
Production

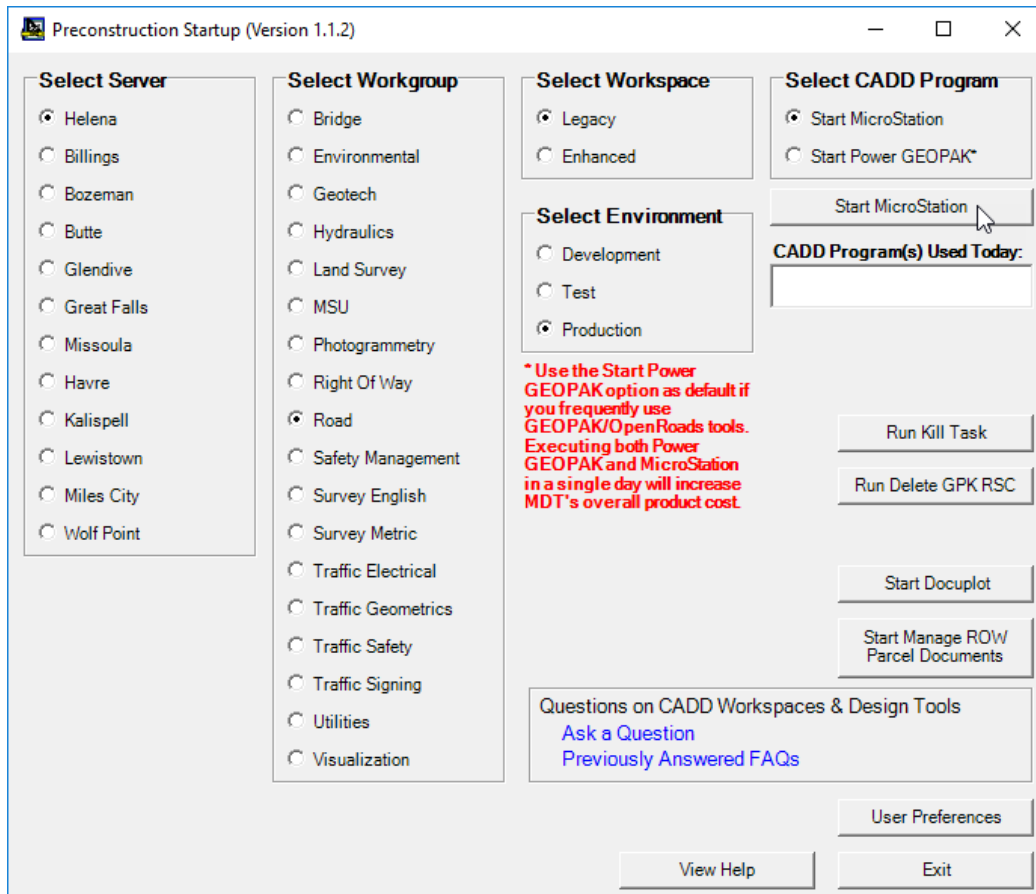
OK

Cancel

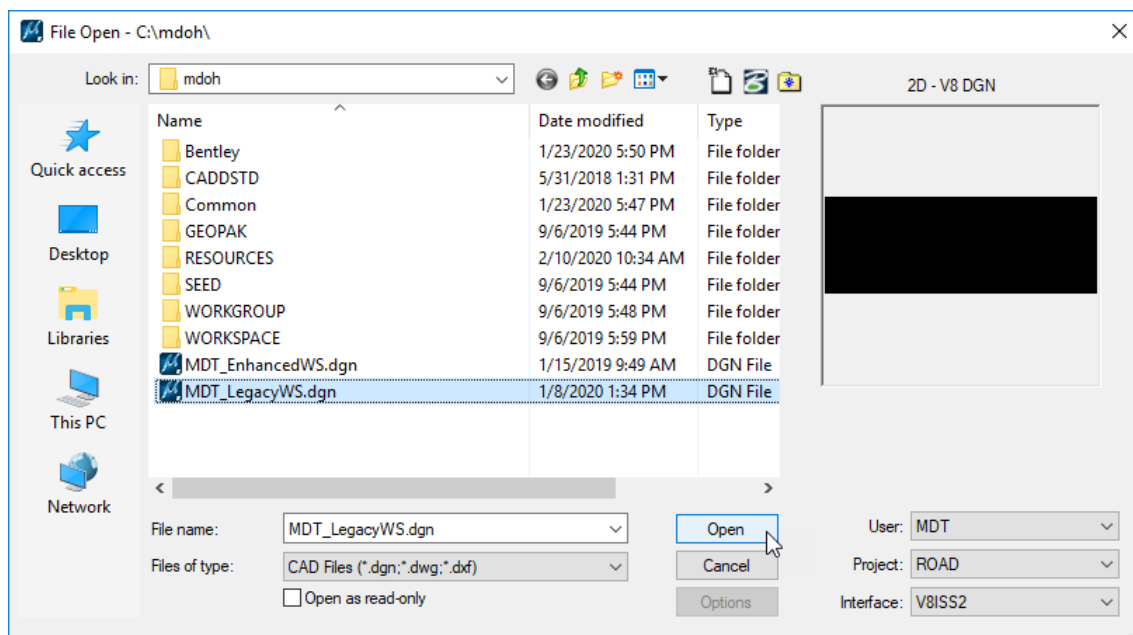
To save changes to your **User Options** select the **OK** button when done making the desired changes which will close the form, saving the changes and applying them on the main form. Select the **Cancel** button to close the form without saving any changes.

Starting MicroStation:

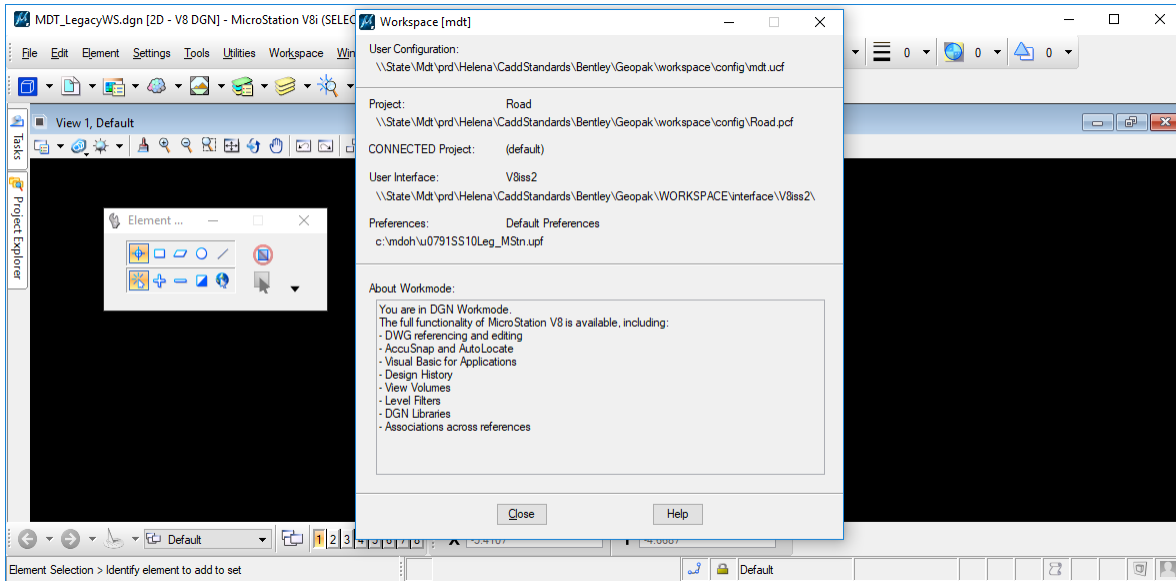
To start MicroStation select the desired Server option, Workspace option, Workgroup option and Environment option and then select the Start MicroStation option. Once you have selected the desired options, select the **Start MicroStation** button to start MicroStation, as shown below:



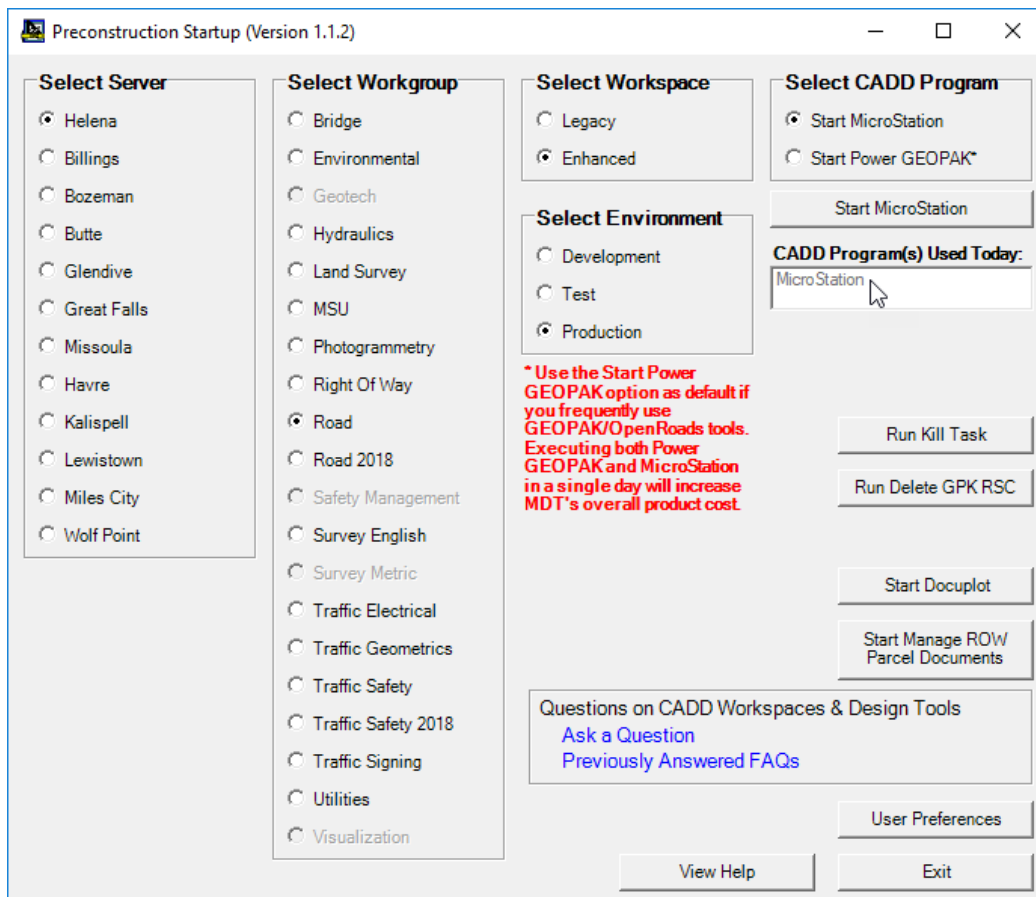
The program will set the proper workspace environment variables (in this case the Legacy workspace was selected) and then start MicroStation with the selected Workgroup option selected for the Project and prompting the user to select a design file to open, as shown below:



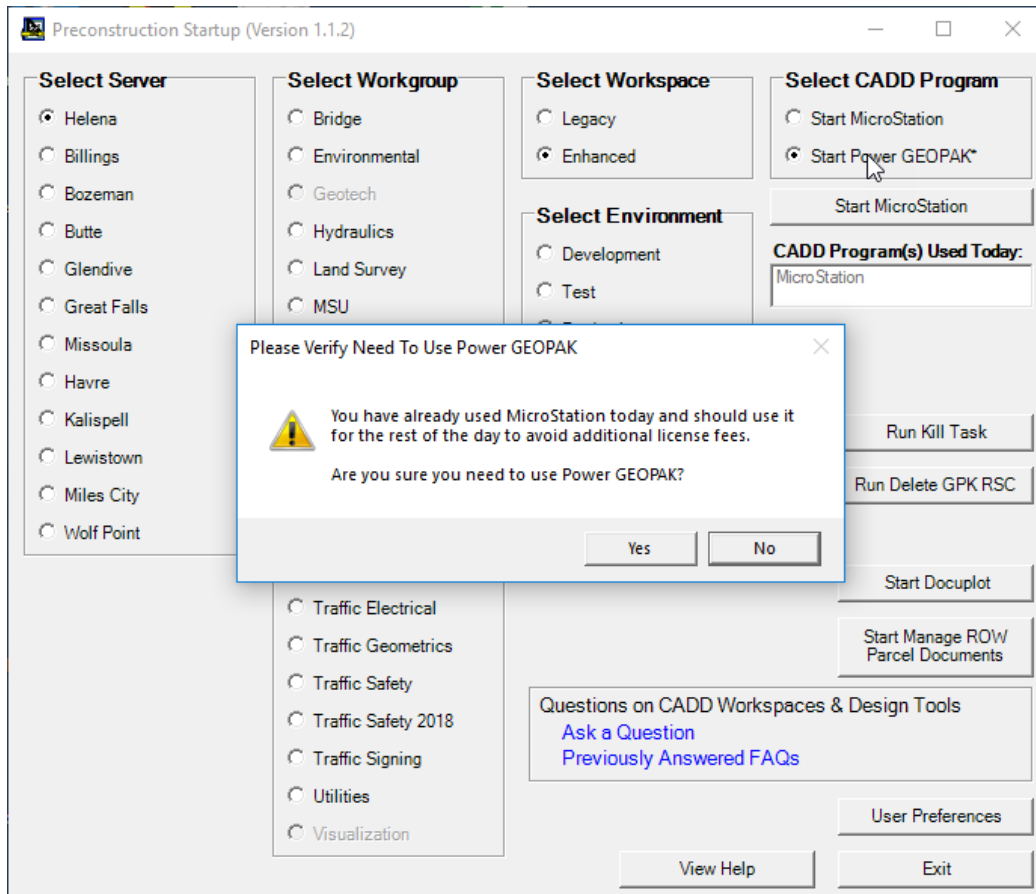
After the user selects the desired design file and selects the Open button MicroStation will finish starting up with the selected design file open, as shown below:



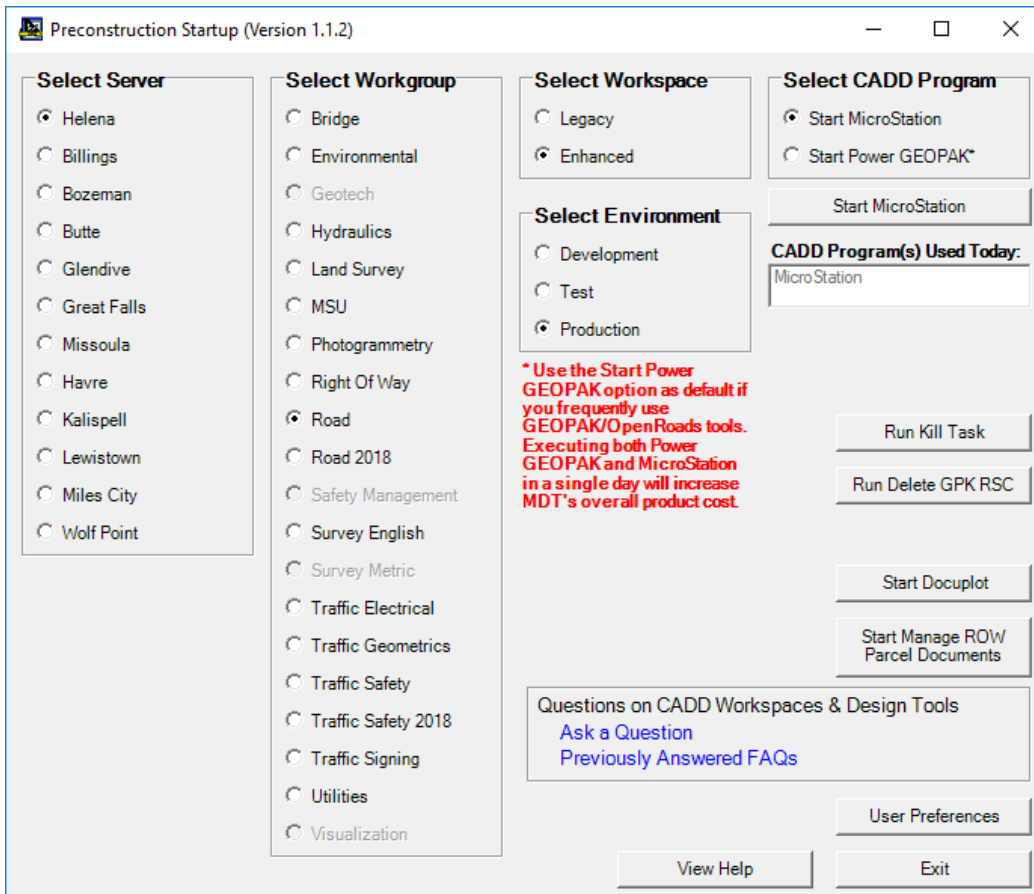
After starting either of the CADD Programs (MicroStation or Power GEOPAK), when restarted, the Preconstruction Startup program will display the CADD Program(s) used for that day in the list of **CADD Program(s) Used Today**, and will set that CADD Program that has already been used on that day (in this case MicroStation) as the selected CADD Program option, as shown below:



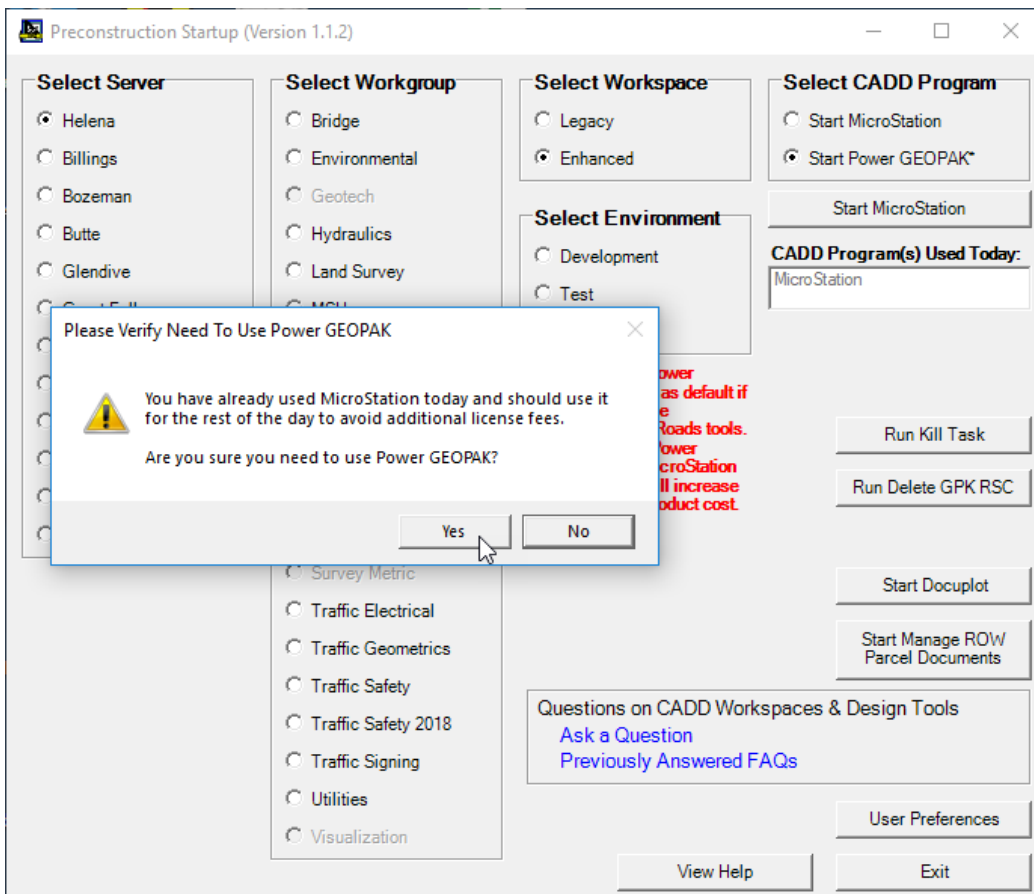
After using one of the CADD Programs, if a user selects the option to start the other CADD Program, the program will display a message box, prompting the user to verify that they need to use the other CADD Program, as shown below:



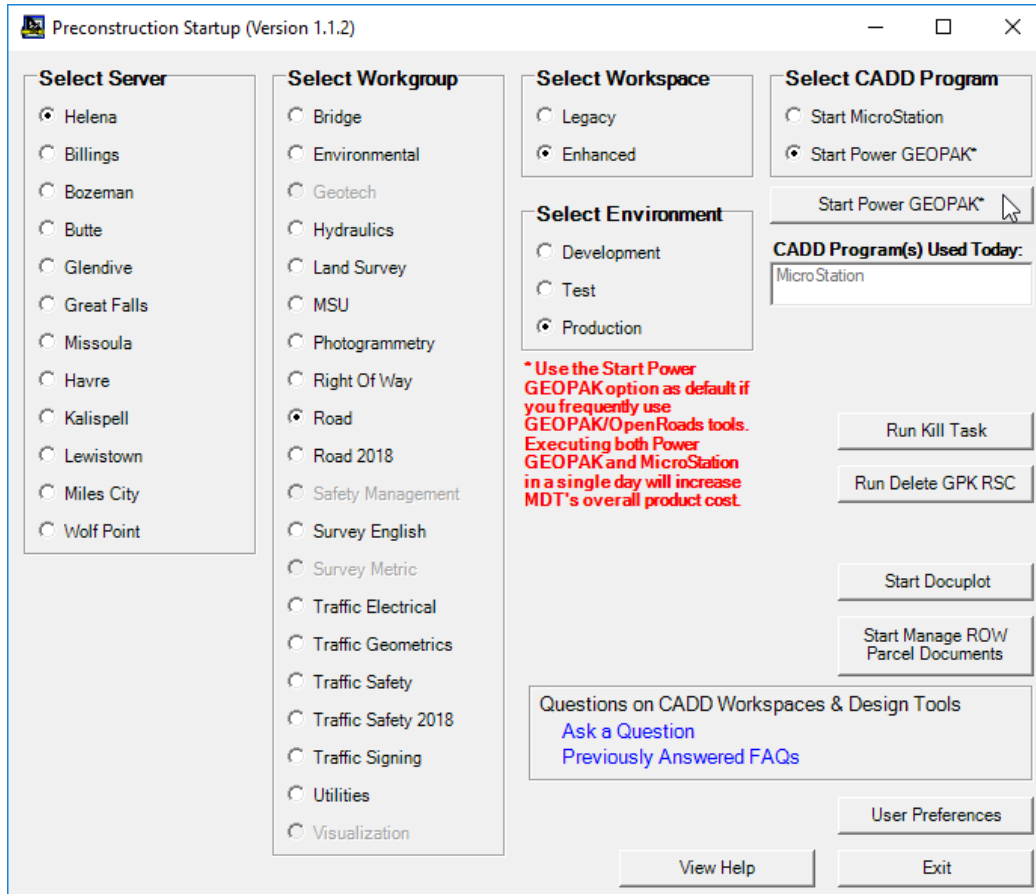
The default response button is the **No** button so if a user either selects the **Enter** key or clicks on the **No** button, the program will close the message box and change the selected start CADD Program back to the CADD Program already used on that day, as shown below:



If the user selects the **Yes** button on the message box form, as shown below:



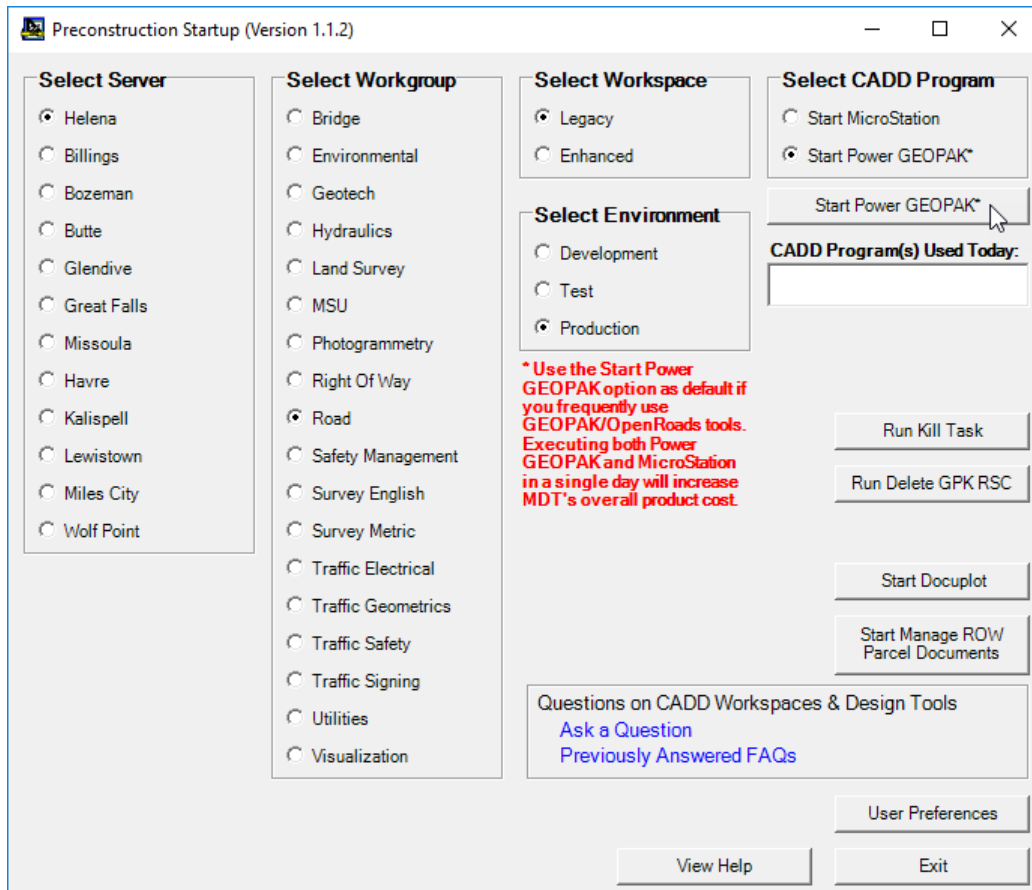
the program will close the message box and leave the selected start CADD Program selection as the user selected CADD Program (in this case Power GEOPAK), as shown below:



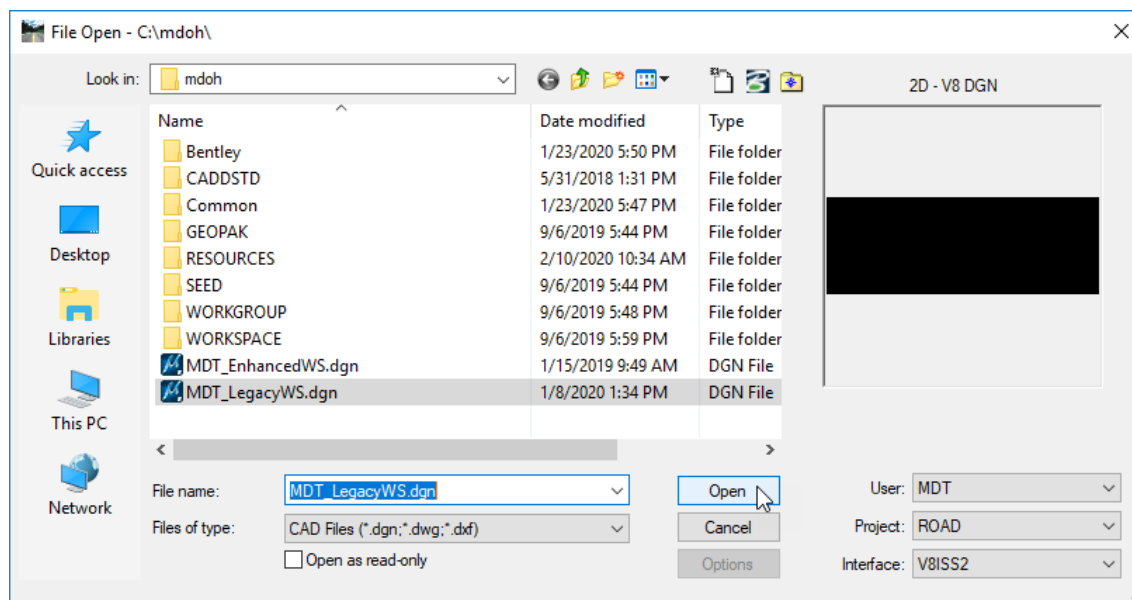
NOTE: Once the user selects the Start MicroStation or Start Power GEOPAK button, the CADD Program will be started and MDT will be charged a license for that program for that day. Please be sure that you need to use the selected CADD Program before selecting the Start MicroStation or Start Power GEOPAK button.

Starting Power GEOPAK:

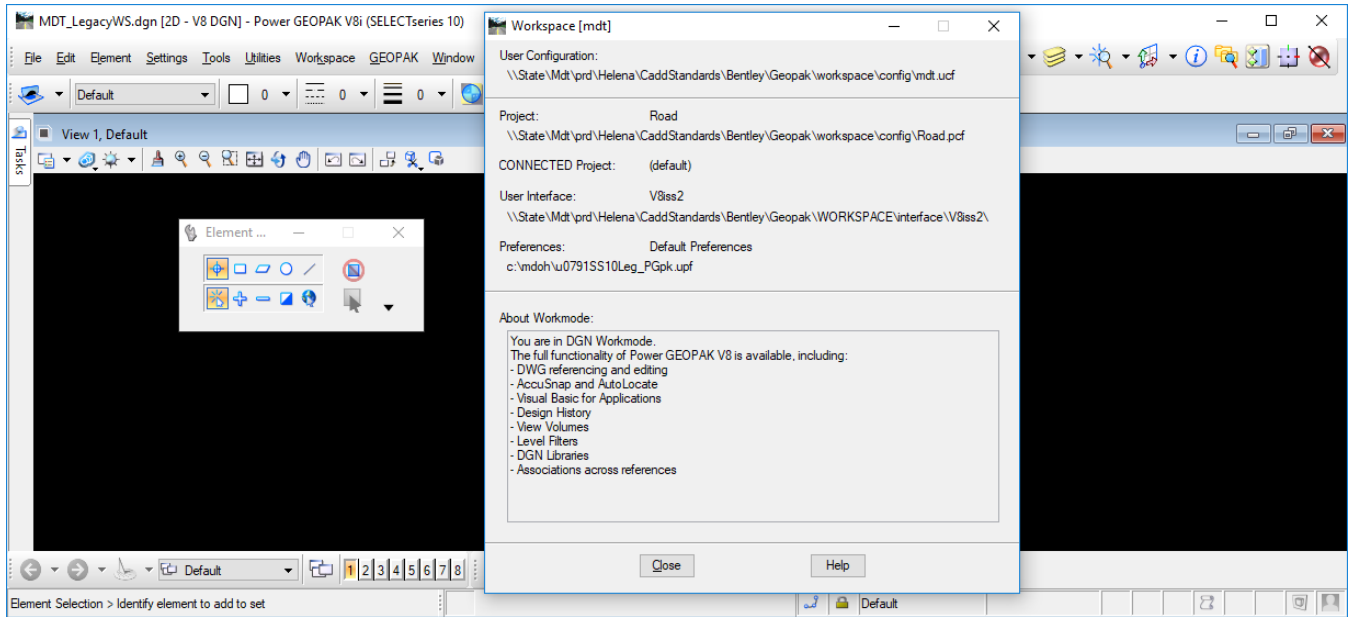
To start Power GEOPAK select the desired Server option, Workspace option, Workgroup option and Environment option and then select the Start Power GEOPAK option. Once you have selected the desired options, select the **Start Power GEOPAK** button to start Power GEOPAK, as shown below:



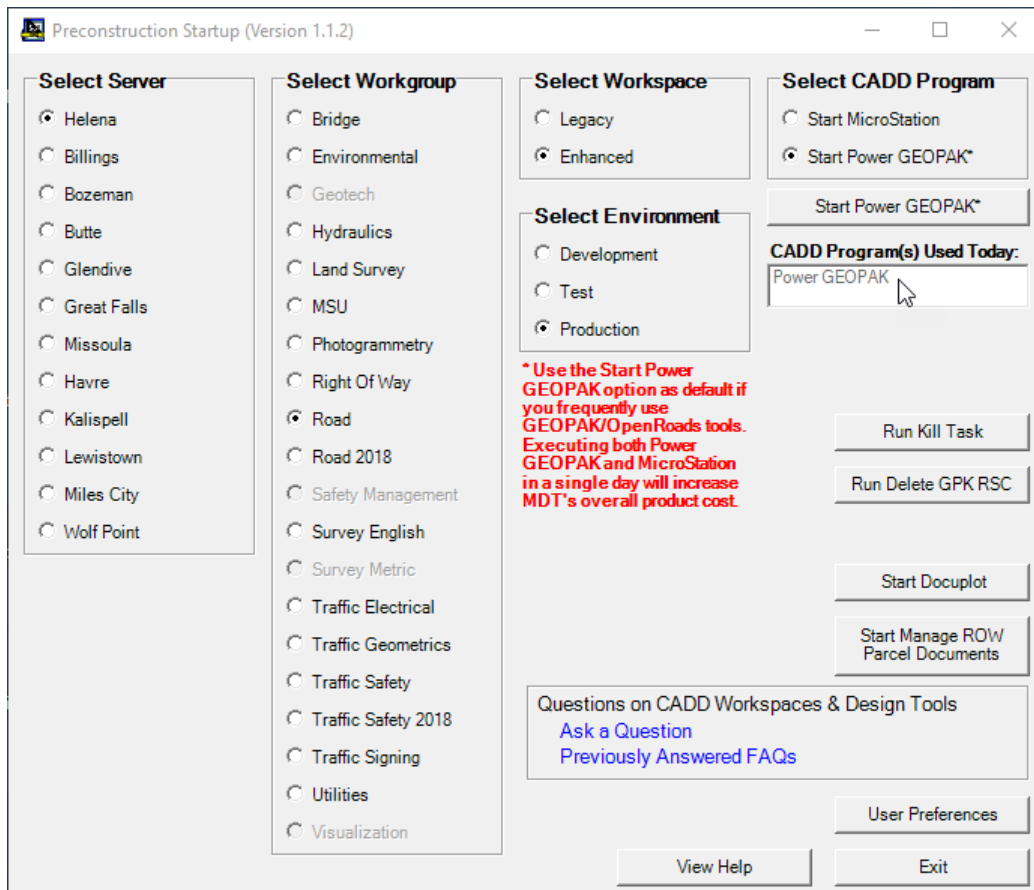
The program will set the proper workspace environment variables (in this case the Legacy workspace was selected) and then start Power GEOPAK with the selected Workgroup option selected for the Project and prompting the user to select a design file to open, as shown below:



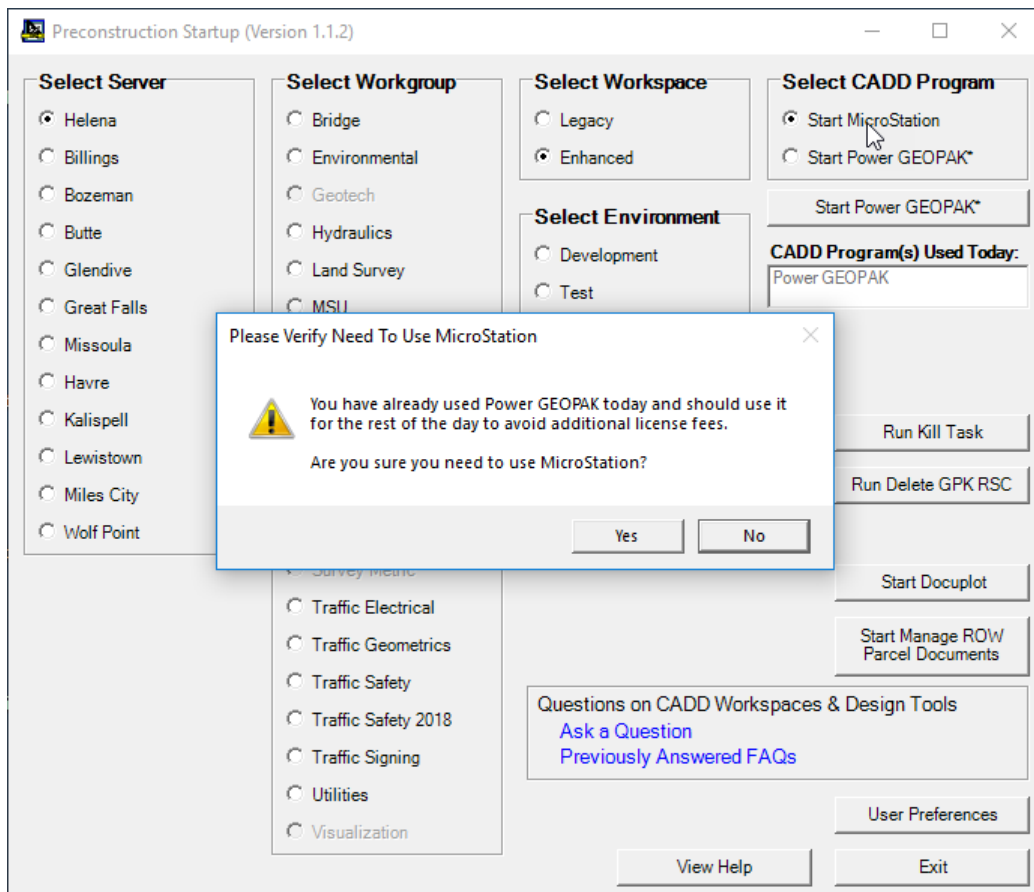
After the user selects the desired design file and selects the Open button MicroStation will finish starting up with the selected design file open, as shown below:



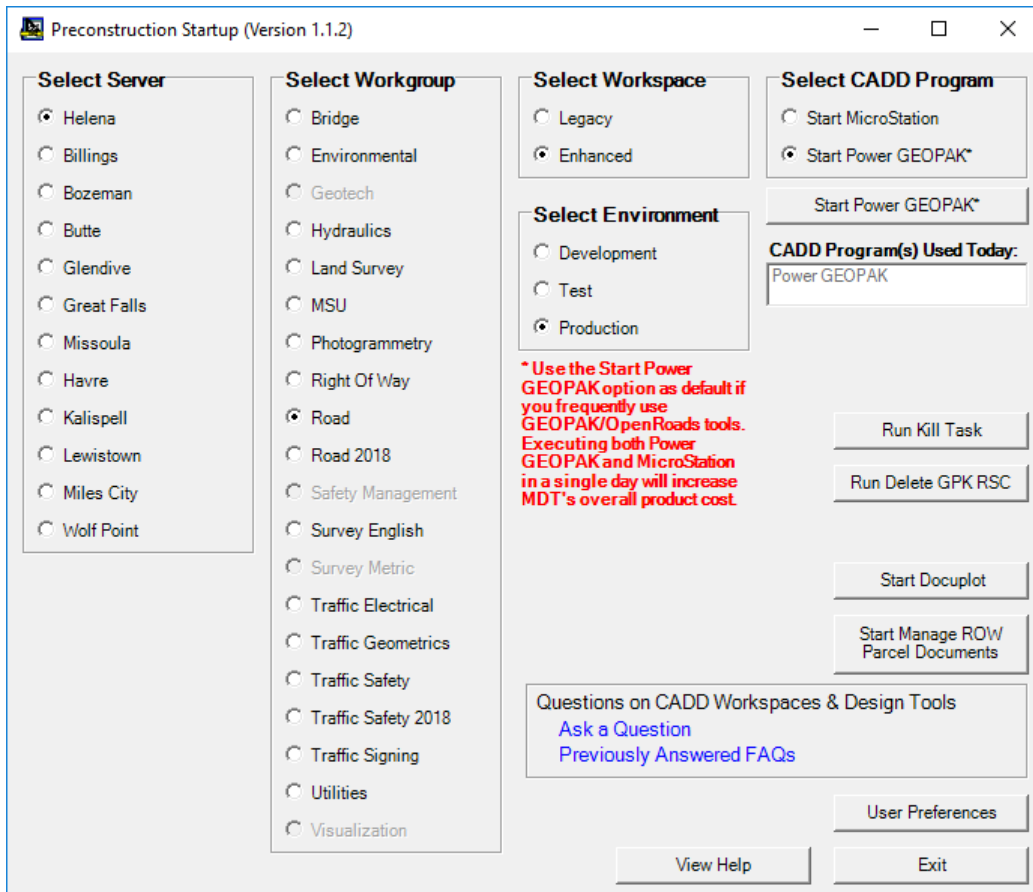
After starting either of the CADD Programs (MicroStation or Power GEOPAK), when restarted, the Preconstruction Startup program will display the CADD Program(s) used for that day in the list of **CADD Program(s) Used Today**, and will set that CADD Program that has already been used on that day (in this case Power GEOPAK) as the selected CADD Program option, as shown below:



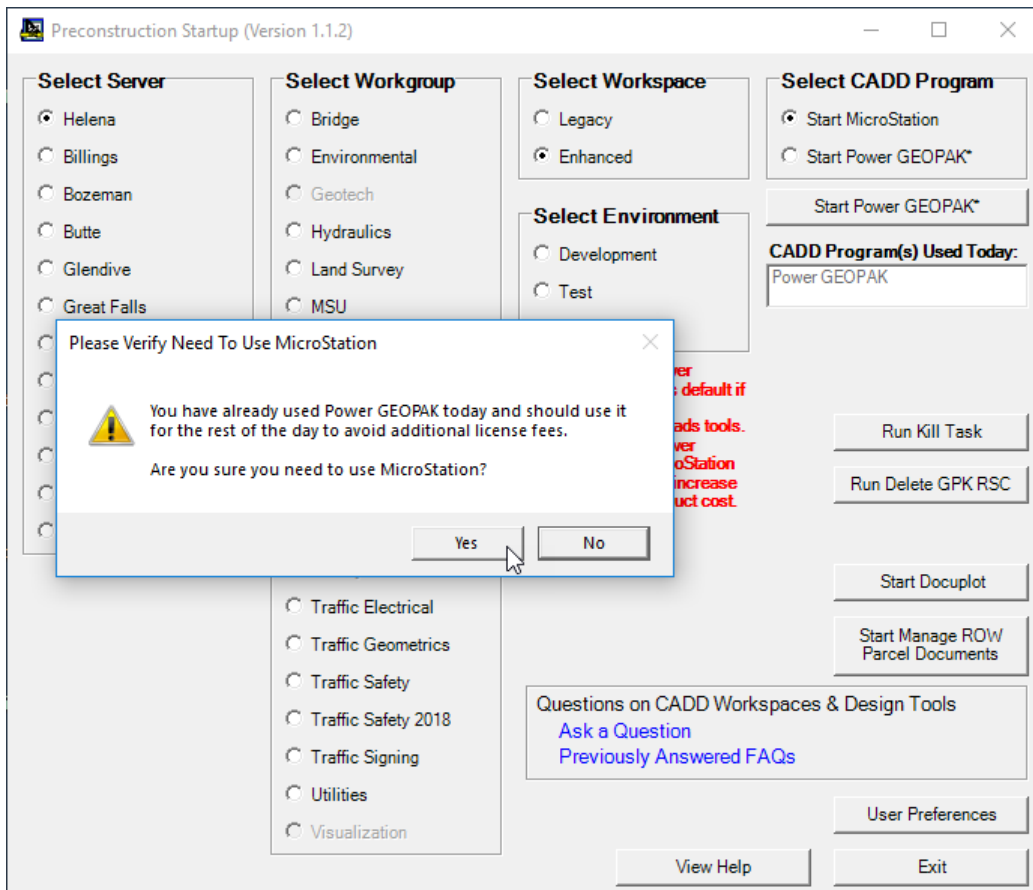
After using one of the CADD Programs, if a user selects the option to start the other CADD Program, the program will display a message box, prompting the user to verify that they need to use the other CADD Program, as shown below:



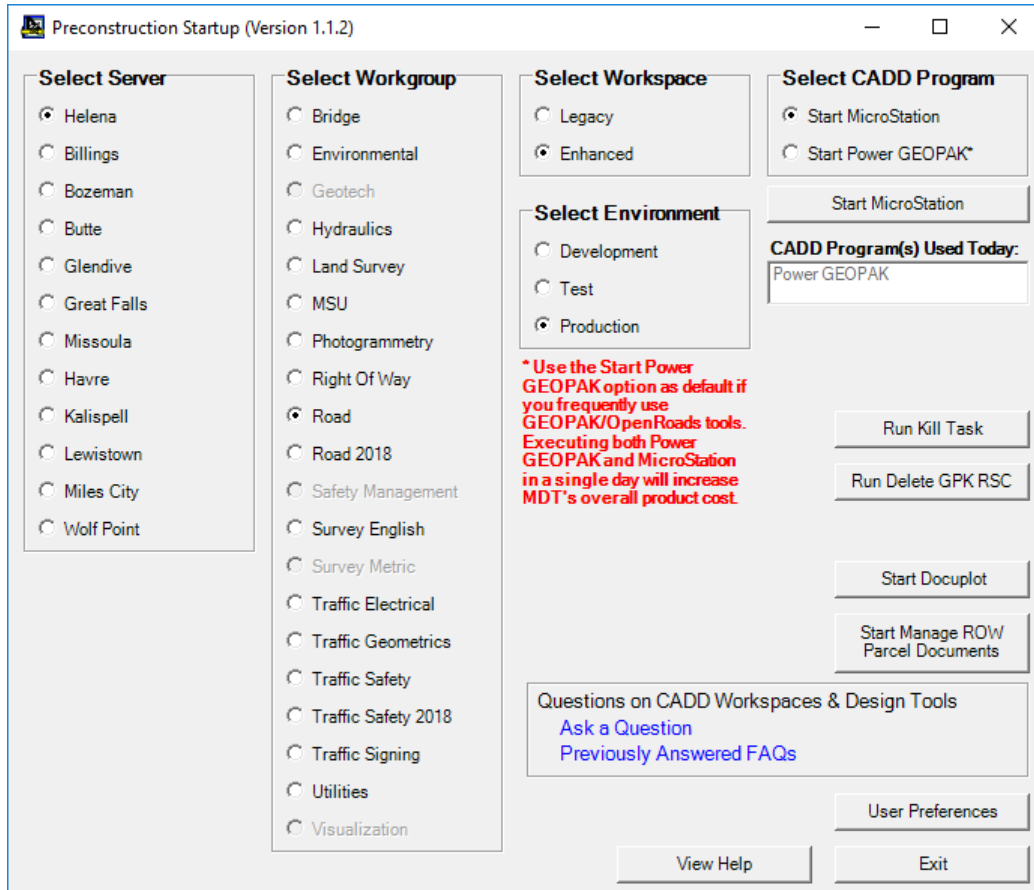
The default response button is the **No** button so if a user either selects the **Enter** key or clicks on the **No** button the program will close the message box and change the selected start CADD Program back to the CADD Program already used on that day, as shown below:



If the user selects the **Yes** button on the message box form, as shown below:



the program will close the message box and leave the selected start CADD Program selection as the user selected CADD Program (in this case MicroStation), as shown below:



NOTE: Once the user selects the Start MicroStation or Start Power GEOPAK button, the CADD Program will be started and MDT will be charged a license for that program for that day. Please be sure that you need to use the selected CADD Program before selecting the Start MicroStation or Start Power GEOPAK button.

Starting Docuplot:

To start Docuplot, select the desired Server option, Workspace option, Workgroup option and Environment option and Start CADD Program option. Once you have selected the desired options, select the **Start Docuplot** button, as shown below:

Preconstruction Startup (Version 1.1.2)

Select Server

- Helena
- Billings
- Bozeman
- Butte
- Glendive
- Great Falls
- Missoula
- Havre
- Kalispell
- Lewistown
- Miles City
- Wolf Point

Select Workgroup

- Bridge
- Environmental
- Geotech
- Hydraulics
- Land Survey
- MSU
- Photogrammetry
- Right Of Way
- Road
- Road 2018
- Safety Management
- Survey English
- Survey Metric
- Traffic Electrical
- Traffic Geometrics
- Traffic Safety
- Traffic Safety 2018
- Traffic Signing
- Utilities
- Visualization

Select Workspace

- Legacy
- Enhanced

Select Environment

- Development
- Test
- Production

Select CADD Program

- Start MicroStation
- Start Power GEOPAK*

Start MicroStation

CADD Program(s) Used Today:

MicroStation

* Use the Start Power GEOPAK option as default if you frequently use GEOPAK/OpenRoads tools. Executing both Power GEOPAK and MicroStation in a single day will increase MDT's overall product cost.

Run Kill Task

Run Delete GPK RSC

Start Docuplot

Start Manage ROW Parcel Documents

Questions on CADD Workspaces & Design Tools

[Ask a Question](#)

[Previously Answered FAQs](#)

User Preferences

View Help

Exit

A **Select Docuplot Startup Option** form will be displayed with the selected Workspace and CADD Program options selected, as shown below:

Select Docuplot Startup Option

Select Docuplot Startup Option Below:

- Load Docuplot CPB
- Start Docuplot Without Loading CPB

Okay

Cancel

Select Docuplot CPB To Load Below:

Select Docuplot CPB

Selected CPB:

Selected CPB Workspace:

Selected CPB Units:

Select Workspace Option Below:

- Legacy
- Enhanced

Select CADD Program Option Below:

- Start MicroStation
- Start Power GEOPAK*

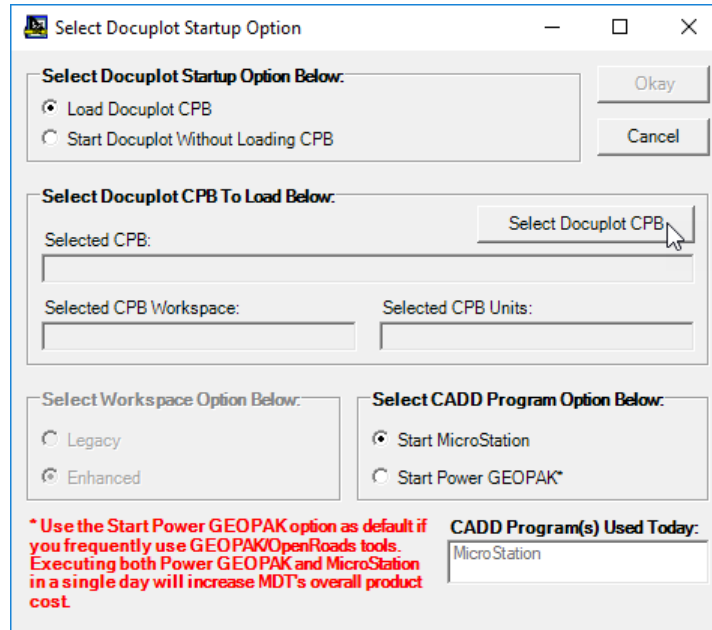
CADD Program(s) Used Today:

MicroStation

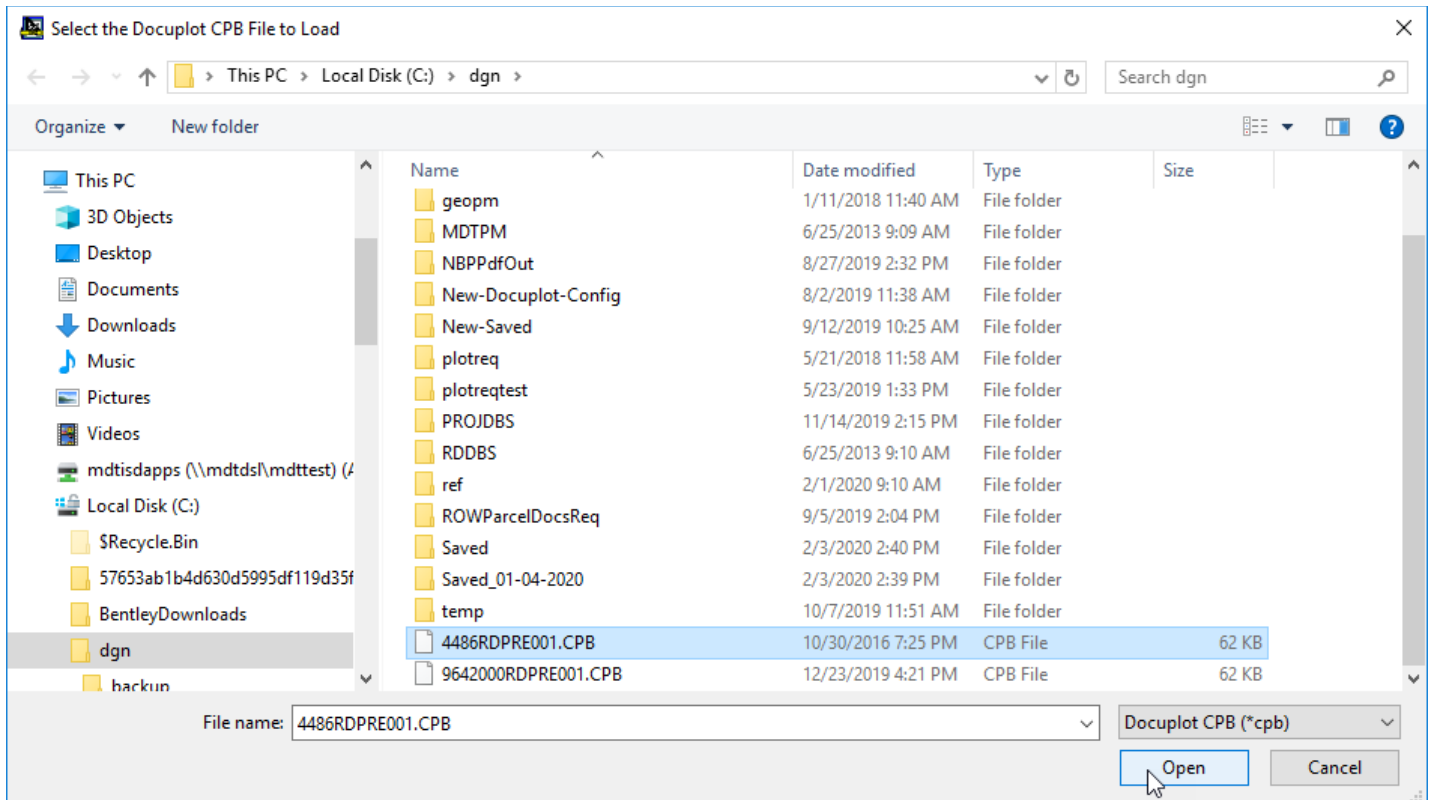
* Use the Start Power GEOPAK option as default if you frequently use GEOPAK/OpenRoads tools. Executing both Power GEOPAK and MicroStation in a single day will increase MDT's overall product cost.

The **CADD Program(s) Used Today** are displayed in the list on this form as well so that the user is aware of what CADD Program(s) they have used today. As with the main form, if the user chooses a CADD Program option that is different from the one already used today, the user will be prompted to verify that they need to use the other CADD Program before the other CADD Program selection is allowed in the **Select CADD Program Option Below:** selections.

The **Load Docuplot CPB** option will be selected as the Docuplot Startup Option when the form loads. This option allows the user to use the **Select Docuplot CPB** button in the **Select Docuplot CPB To Load Below:** group to select a Docuplot CPB on their machine to load in Docuplot when Docuplot starts up. To load an existing Docuplot CPB, the user selects the **Select Docuplot CPB** button, as shown below:



A **Select the Docuplot CPB File to Load** form will be displayed, as shown below:



Using this form, the user navigates to the folder containing the Docuplot CPB to load (generally the C:\Dgn folder) and selects the desired CPB to load (in this case 4486RDPRE001.CPB) and then selects the **Open** button, as shown above.

The program reads the selected CPB to get the Workspace and Units for the CPB and then loads the CPB file path and name into the **Selected CPB:** text box and the selected CPB workspace into the **Selected CPB Workspace:** text box and sets the selected **Select Workspace Option** to the selected CPBs workspace and loads the selected CPB units into the **Selected CPB Units:** text box, as shown below:

Select Docuplot Startup Option

Select Docuplot Startup Option Below:

Load Docuplot CPB
 Start Docuplot Without Loading CPB

Okay
Cancel

Select Docuplot CPB To Load Below:

Selected CPB: C:\dgn\4486RDPRE001.CPB
Select Docuplot CPB

Selected CPB Workspace: Legacy
Selected CPB Units: Metric

Select Workspace Option Below:

Legacy
 Enhanced

Select CADD Program Option Below:

Start MicroStation
 Start Power GEOPAK*

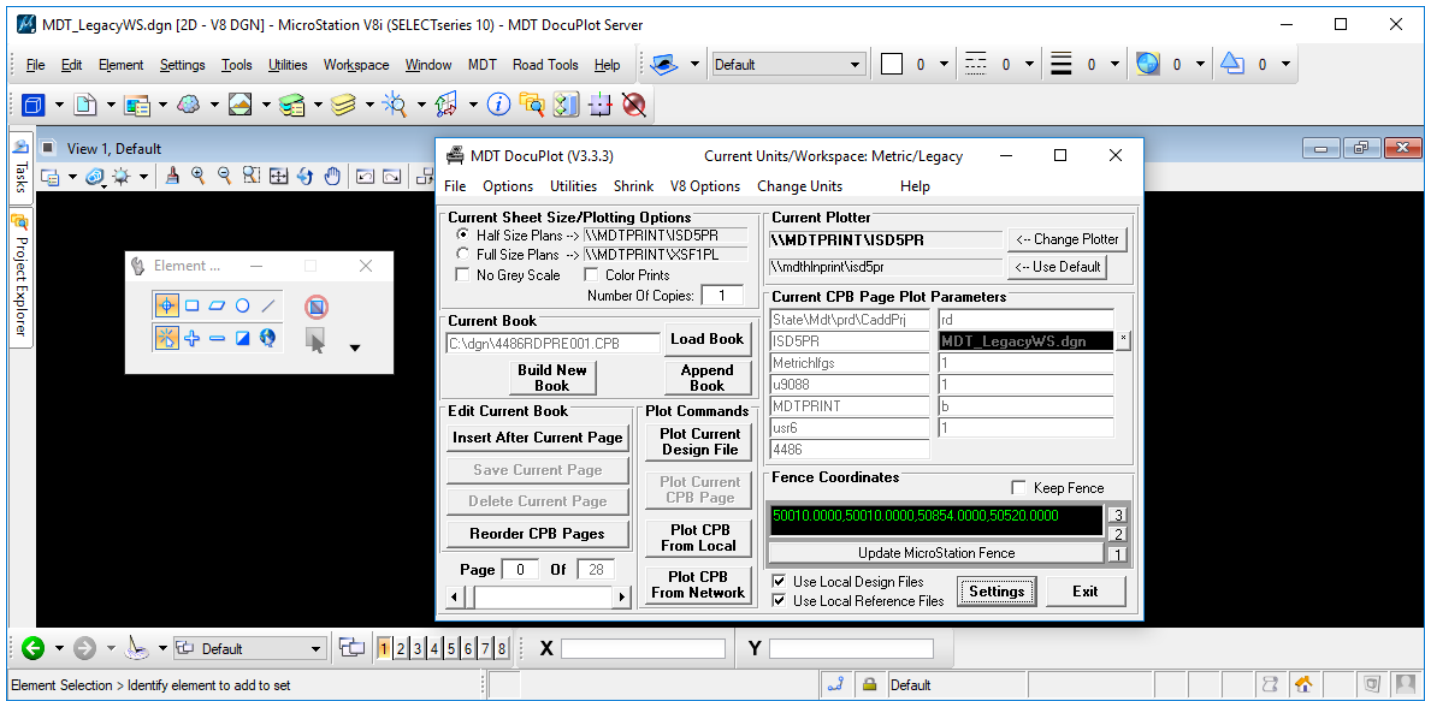
* Use the Start Power GEOPAK option as default if you frequently use GEOPAK/OpenRoads tools. Executing both Power GEOPAK and MicroStation in a single day will increase MDT's overall product cost.

CADD Program(s) Used Today: MicroStation

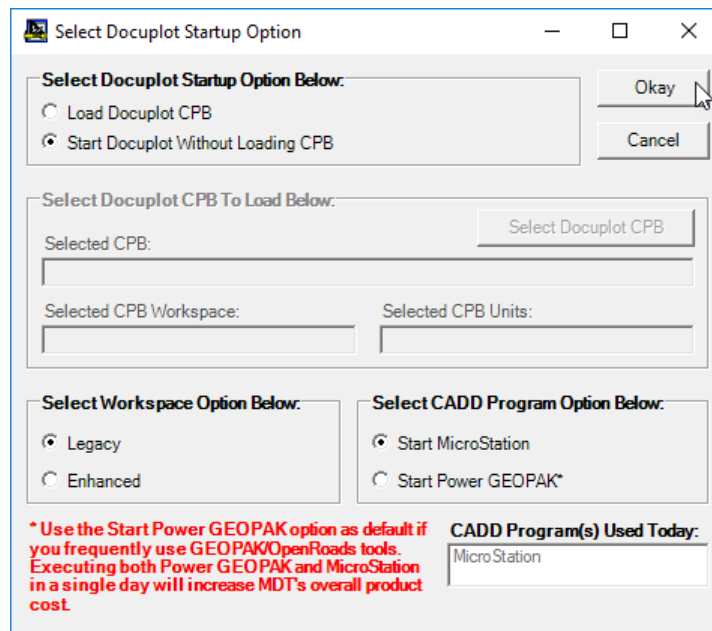
Next, the user selects the CADD Program to start. Once the user has selected the CADD Program to start, they select the **Okay** button to continue with Starting Docuplot.

NOTE: Once the user selects the **Okay** button, the selected CADD Program will be started and MDT will be charged a license for that CADD program for that day. Please be sure that you need to use the selected CADD Program before selecting **Okay** button.

After selecting the **Okay** button, the MDT Docuplot splash screen will be displayed while Docuplot is starting up the CADD Program using the selected Workspace and Workgroup Project and a default design file and then finishing loading the selected CPB. Once done loading, Docuplot and the CADD Program should be displayed with the selected Docuplot CPB loaded, as shown below:



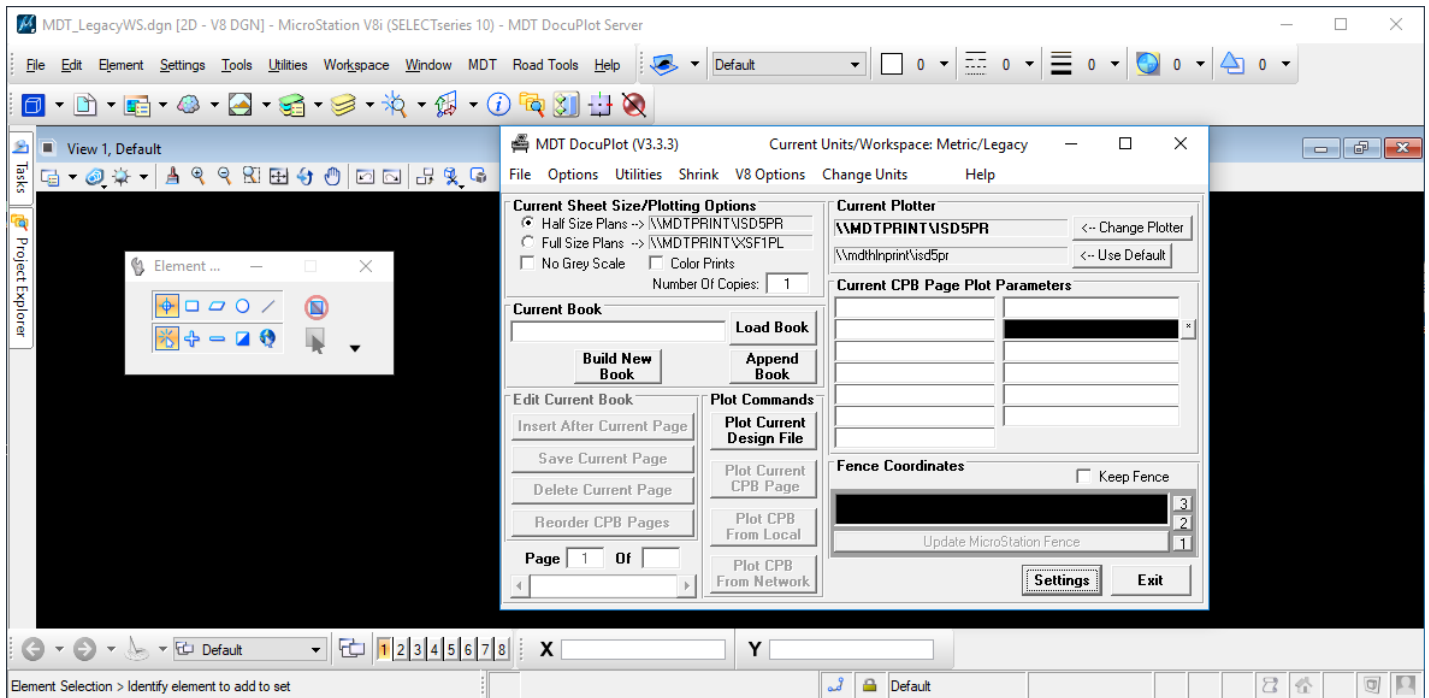
The **Start Docuplot without Loading CPB** option allows users to start Docuplot without having to select and load an existing CPB. To start Docuplot without loading an existing Docuplot CPB the user selects the **Start Docuplot Without Loading CPB** option and then selects desired Workspace from the **Select Workspace Option** options, and then selects the CADD Program to start, as shown below:



Once the user has selected the CADD Program to start, they select the **Okay** button to continue with Starting Docuplot.

NOTE: Once the user selects the **Okay** button, the selected CADD Program will be started and MDT will be charged a license for that CADD program for that day. Please be sure that you need to use the selected CADD Program before selecting **Okay** button.

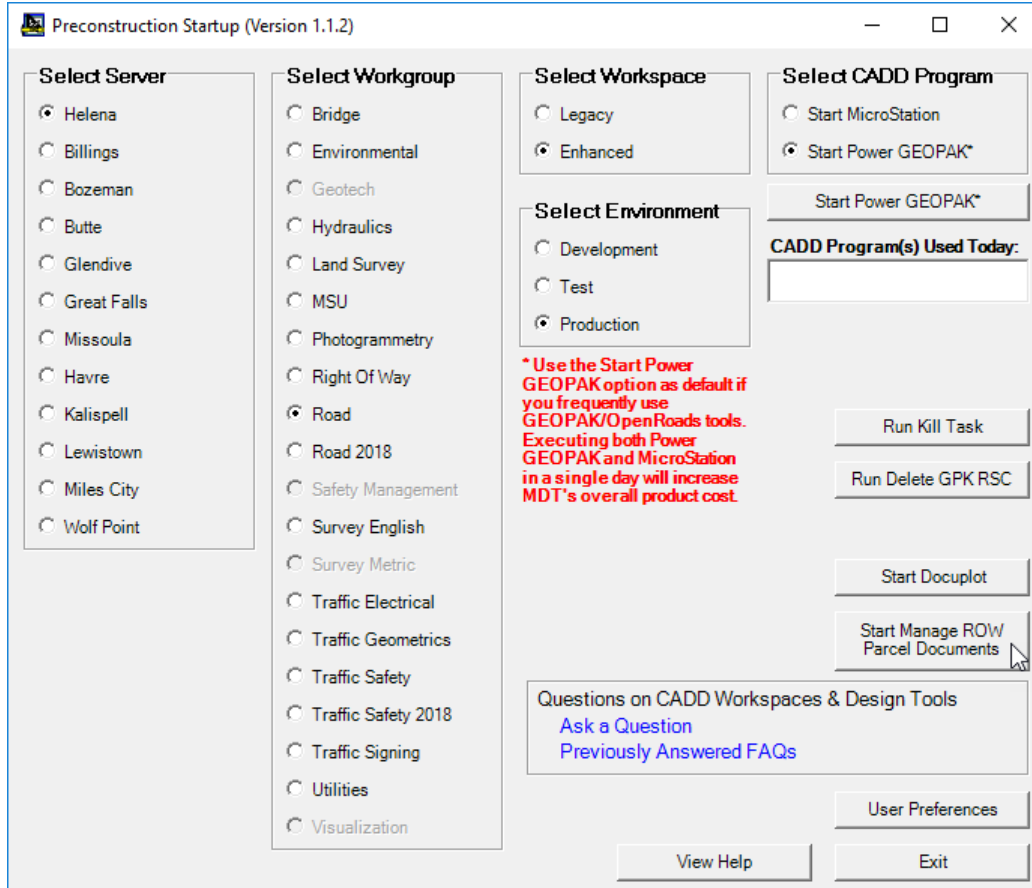
After selecting the **Okay** button, the MDT Docuplot splash screen will be displayed while Docuplot is starting up the CADD Program using the selected Workspace and Workgroup Project and a default design file and then finishing loading. Once done loading, Docuplot and the CADD Program should be displayed with no Docuplot CPB loaded, as shown below:



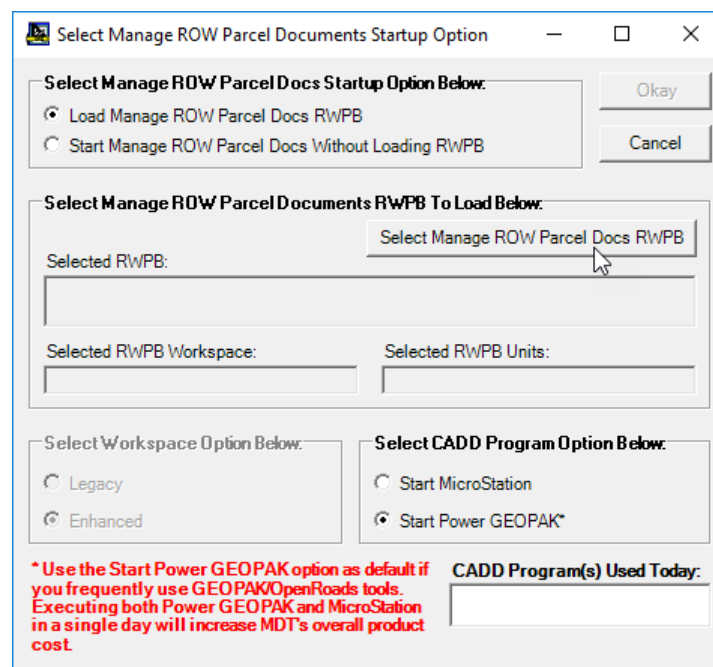
The user can select the **Cancel** button on the *Select Docuplot Startup Option* form at any time to cancel the Docuplot startup operations and return to the main form.

Starting Manage ROW Parcel Documents:

If the user's machine has the Manage ROW Parcel Documents application installed on their computer, the **Start Manage ROW Parcel Documents** button will be displayed, as shown below.



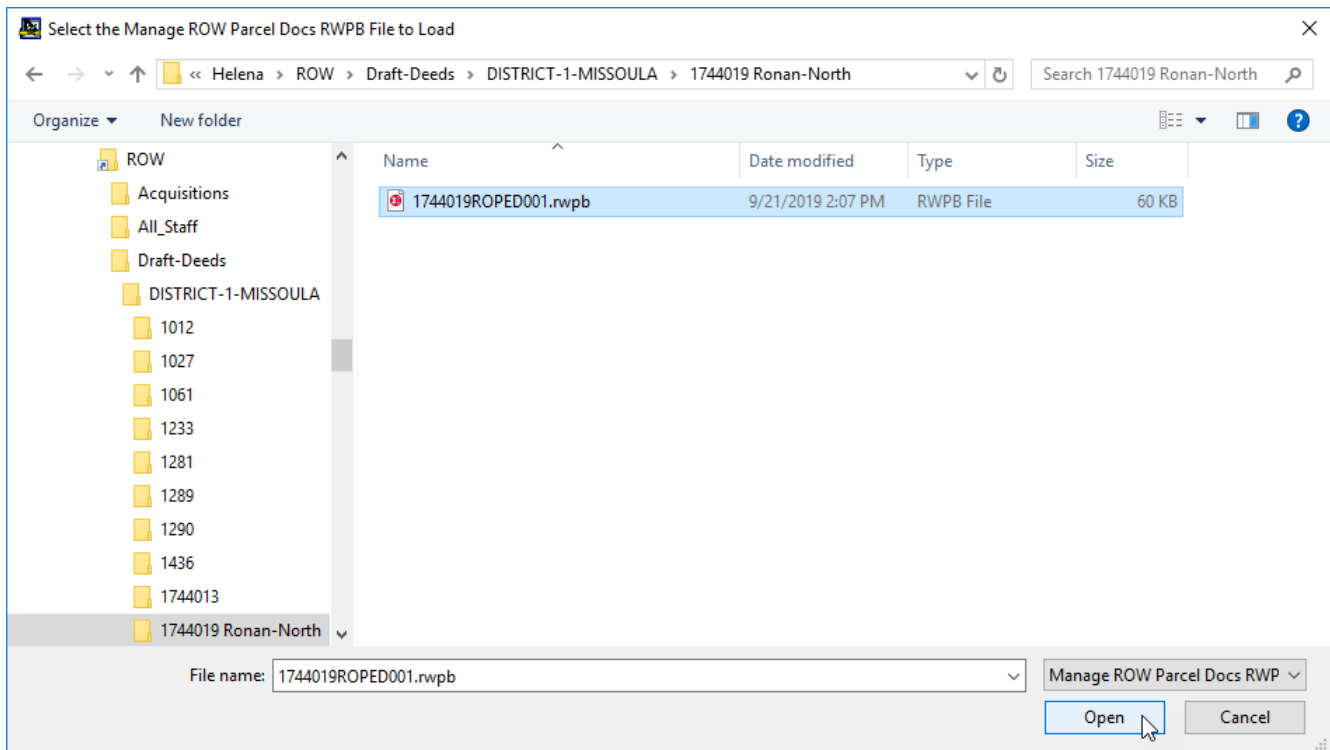
To start the Manage ROW Parcel Documents application, select the **Start Manage ROW Parcel Documents** button, as shown above. A **Select Manage ROW Parcel Documents Startup Option** form will be displayed with the selected Workspace and CADD Program options selected, as shown below:



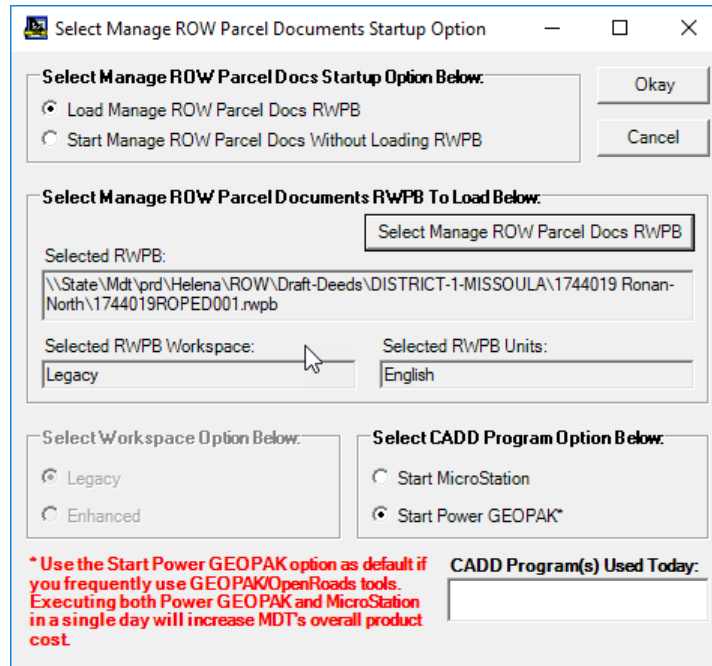
The **CADD Program(s) Used Today** are displayed in the list on this form as well so that the user is aware of what CADD Program(s) they have used today. As with the main form, if the user chooses a CADD Program option that is different from the one already used today, the user will be prompted to verify that they need to use the other CADD Program before the other CADD Program selection is allowed in the **Select CADD Program Option Below:** selections.

The **Load Manage ROW Parcel Docs RWPB** option will be selected as the Manage ROW Parcel Docs Startup Option when the form loads. This option allows the user to use the **Select Manage ROW Parcel Docs RWPB** button in the **Select Manage ROW Parcel Docs Startup Option Below:** group to select a Manage ROW Parcel Documents ROW Parcels RWPB to load in Manage ROW Parcel Docs when Manage ROW Parcel Docs starts up. To load an existing Manage ROW Parcel Docs RWPB the user selects the **Select Manage ROW Parcel Docs RWPB** button, as shown above.

A **Select the Manage ROW Parcel Docs RWPB File to Load** form will be displayed allowing you to browse to and select the RWPB to load, as shown below.



After selecting the desired RWPB to open the form will update to display the RWPB file location and name, the Workspace for the RWPB and the Units for the RWPB, as shown below.

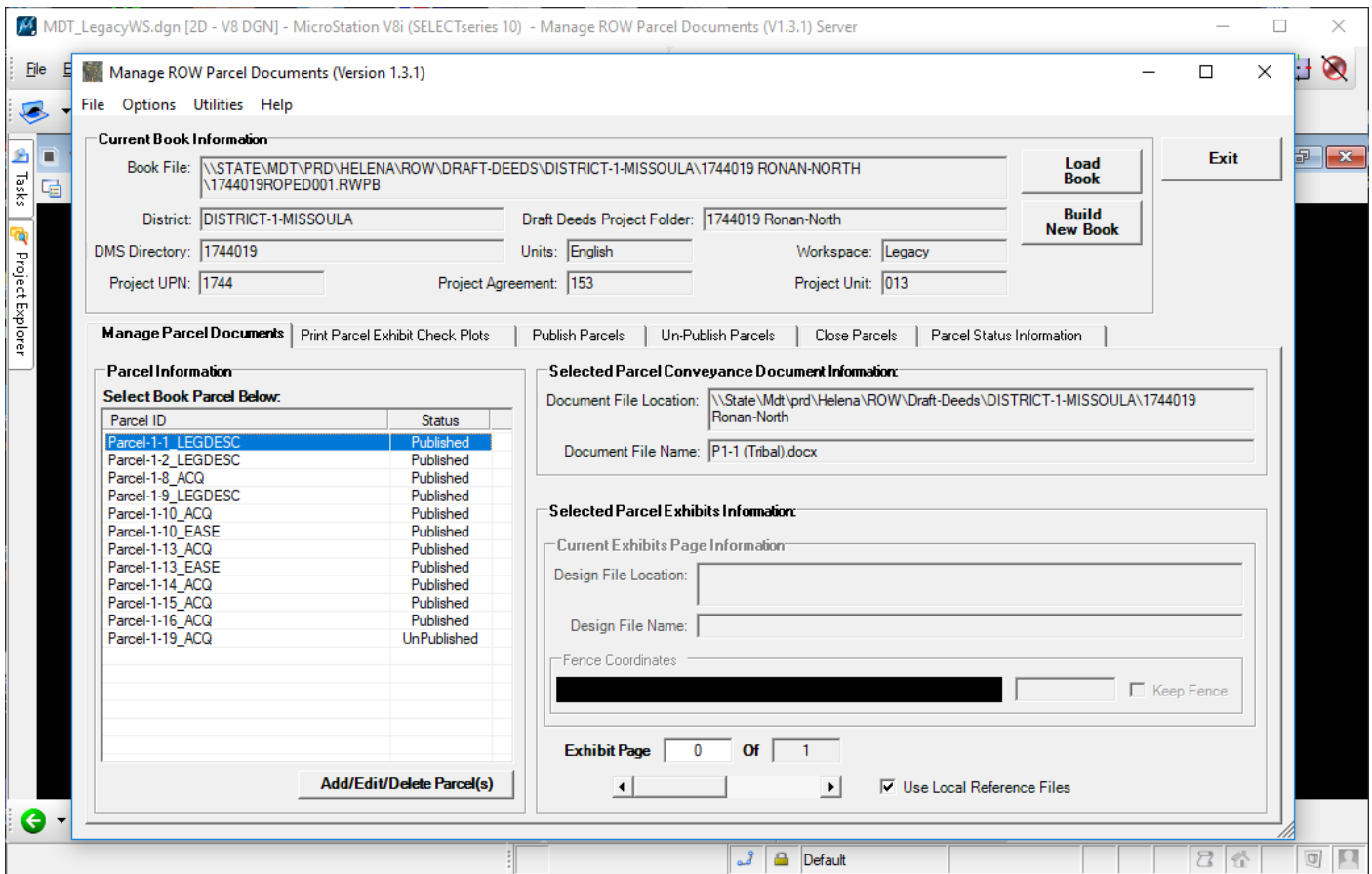


Finally, select the CADD Program option from the **Select CADD Program Option Below:** section. This determines which CADD Program (MicroStation or Power GEOPAK) will be started for use in displaying the ROW Exhibits Design files for the Parcel Exhibits pages. Unless Power GEOPAK was used previously that day, you should only need to start Microstation when working with the Manage ROW Parcel Documents application.

Once the user has selected the CADD Program to start, they select the **Okay** button to continue with Starting Manage ROW Parcel Documents.

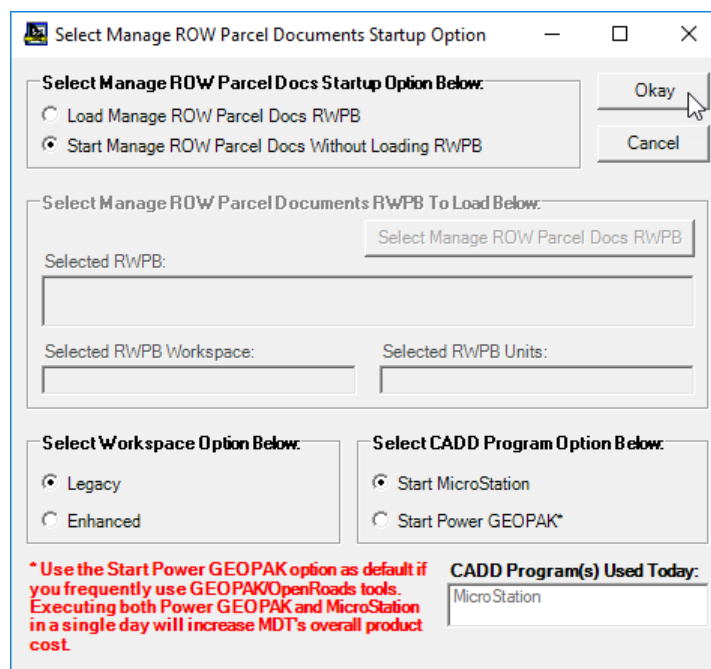
NOTE: Once the user selects the **Okay** button, the selected CADD Program will be started and MDT will be charged a license for that CADD program for that day. Please be sure that you need to use the selected CADD Program before selecting **Okay** button.

After selecting the **Okay** button, the Manage ROW Parcel Documents splash screen will be displayed while Manage ROW Parcel Documents is starting up the CADD Program using the selected Workspace and Workgroup Project and a default design file and then finishing loading the selected RWPB. Once done loading, Manage ROW Parcel Documents and the CADD Program should be displayed with the selected Manage ROW Parcel Documents RWPB loaded, as shown below:



Note that the opened RWPB Workspace is displayed in the **Current Book Information** section, as shown above.

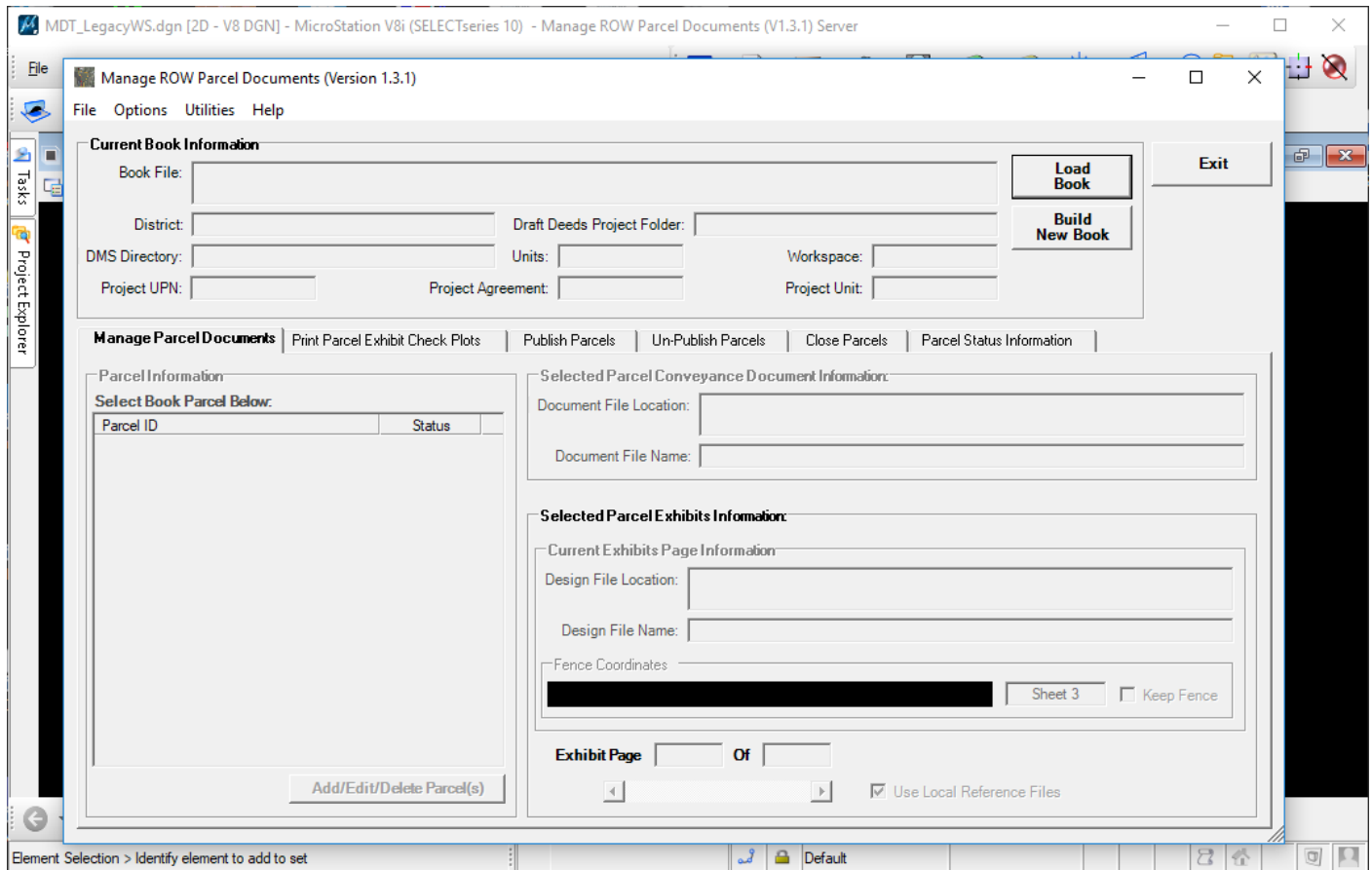
The **Start Manage ROW Parcel Docs without Loading RWPB** option allows users to start Manage ROW Parcel Documents without having to select and load an existing RWPB. To start Manage ROW Parcel Documents without loading an existing Manage ROW Parcel Documents RWPB, the user selects the **Start Manage ROW Parcel Docs Without Loading RWPB** option and then selects desired Workspace from the **Select Workspace Option** options, and then selects the CADD Program to start, as shown below:



Once the user has selected the CADD Program to start, they select the **Okay** button to continue with Starting Manage ROW Parcel Documents.

NOTE: Once the user selects the Okay button, the selected CADD Program will be started and MDT will be charged a license for that CADD program for that day. Please be sure that you need to use the selected CADD Program before selecting Okay button.

After selecting the **Okay** button, the Manage ROW Parcel Documents splash screen will be displayed while Manage ROW Parcel Documents is starting up the CADD Program using the selected Workspace and Workgroup Project and a default design file and then finishing loading. Once done loading, Manage ROW Parcel Documents and the CADD Program should be displayed with no Manage ROW Parcel Documents RWPB loaded, as shown below:



The user can select the **Cancel** button on the *Select Manage ROW Parcel Documents Startup Option* form at any time to cancel the Manage ROW Parcel Documents startup operations and return to the main form.