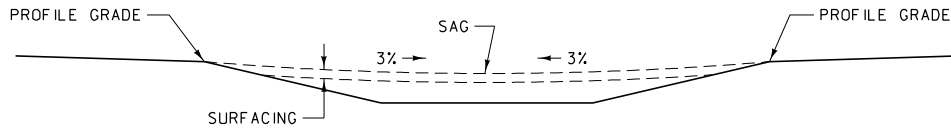


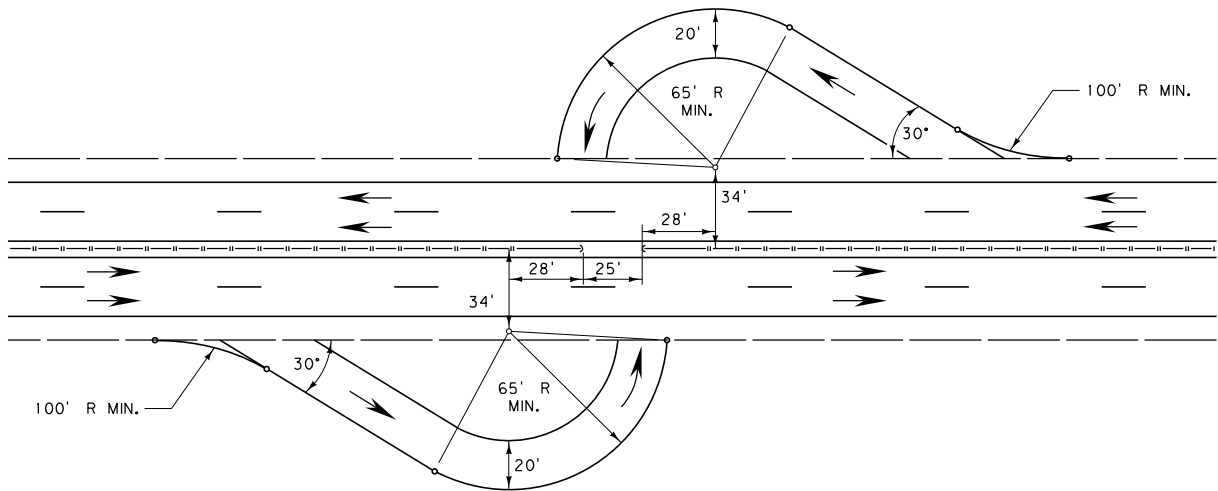
PLAN



PROFILE

MEDIAN WIDTHS 36' TO 76'

LOCATE AND CONSTRUCT TURNOUTS ABOVE IN CONJUNCTION WITH DITCH BLOCKS IF AT ALL POSSIBLE. PROVIDE DRAINAGE WHEN NECESSARY.



STANDARD U-TURN FOR NARROW MEDIANS


NOTES:

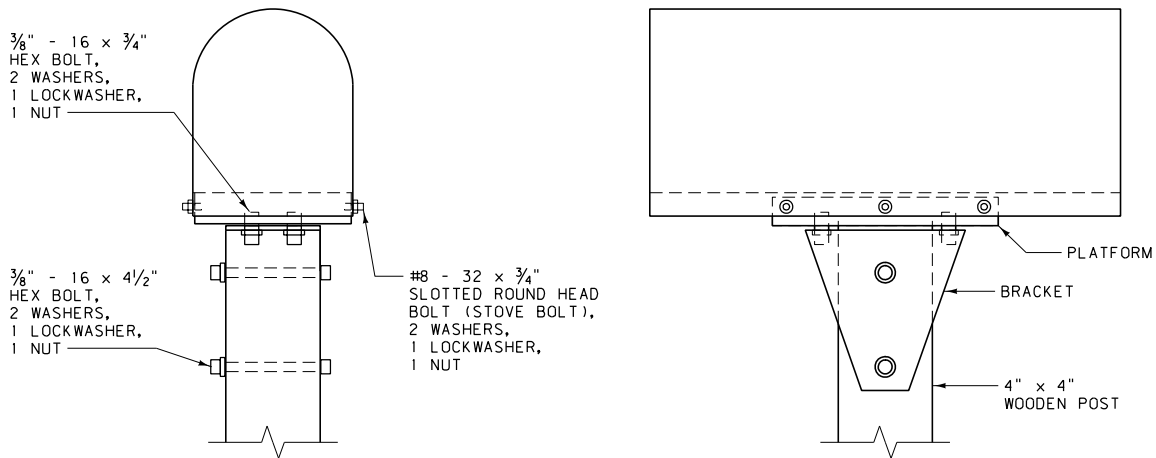
NARROW MEDIANS, MEDIAN WIDTHS GREATER THAN 76 FT. AND INDEPENDENT ROADWAYS REQUIRE SPECIAL DESIGN.

GRADES: UNIFORM BETWEEN INSIDE SHOULDERS OF MAIN TRAVELED WAY EXCEPT FOR SPECIAL DESIGN.

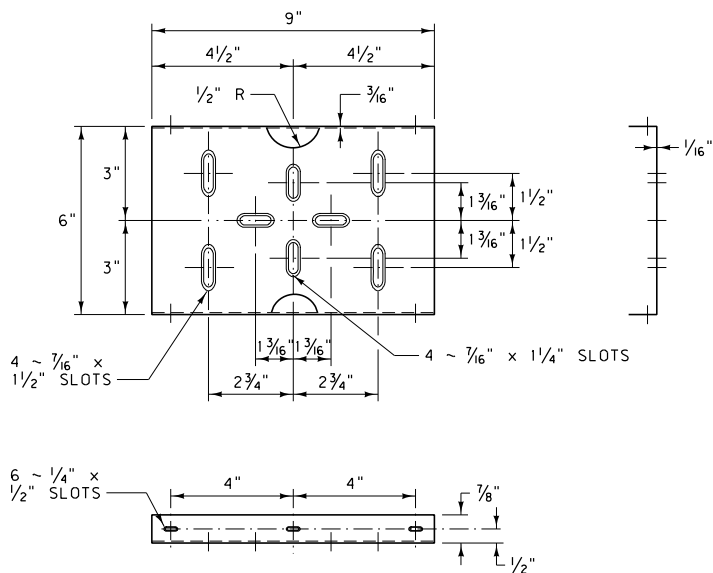
SURFACING: SEE PLANS FOR QUANTITIES.

DRAINAGE: USE 18" OR 24" CULVERTS IF REQUIRED.

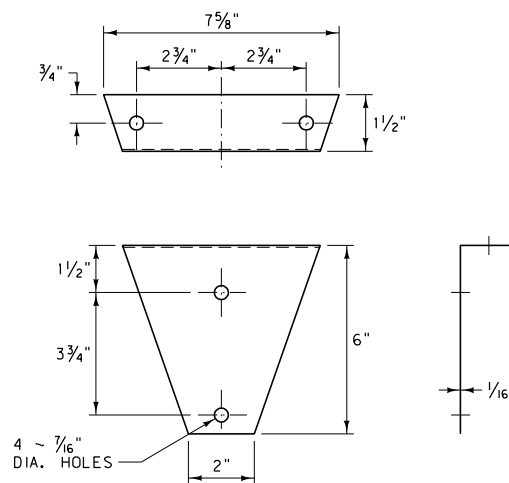
| | |
|--|--------------------------|
| DETAILED DRAWING | |
| REFERENCE STANDARD SPEC. SECTION | DWG. NO. 900-00 |
| U-TURN MEDIAN OPENINGS ON CONTROLLED ACCESS HIGHWAYS | |
| EFFECTIVE: FEBRUARY 2005 | |
|  MONTANA DEPARTMENT OF TRANSPORTATION | servicing you with pride |



SINGLE MAILBOX ASSEMBLY *



PLATFORM



BRACKET

NOTES:

GALVANIZE ALL MATERIALS PER AASHTO M 111.

STAKE MAILBOX LOCATIONS BEFORE INSTALLATION FOR PROPER HEIGHT AND DISTANCE FROM THE ROADWAY. ONCE STAKED, NOTIFY THE ENGINEER AND THE POST OFFICE. THE ENGINEER AND POSTMASTER/MAILCARRIER ARE ALLOWED 48 HOURS TO REVIEW AND MODIFY THE STAKED LOCATIONS PRIOR TO FINAL INSTALLATION.

* OTHER CRASH TESTED MAILBOX SUPPORTS AND ASSEMBLIES MAY ALSO BE USED.

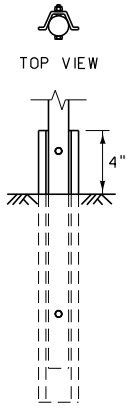
LOCATE THE MAILBOX 8 TO 12 INCHES OUTSIDE THE EDGE OF THE SHOULDER OR 6 TO 12 INCHES FROM THE FACE OF CURB.

FOR MULTIPLE MAILBOX INSTALLATIONS, SPACE THE MAILBOX SUPPORTS A MINIMUM DISTANCE OF 42 INCHES APART.

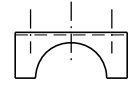
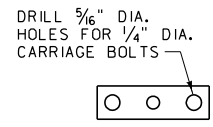
USE MAILBOXES MEETING THE REQUIREMENTS OF THE STANDARD SPECIFICATIONS.

SEE "A GUIDE TO MAILBOX SAFETY IN MONTANA", 1996 EDITION, FOR ADDITIONAL INFORMATION.

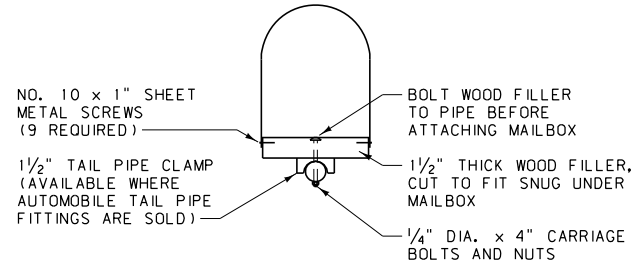
| | |
|----------------------------------|-----------------|
| DETAILED DRAWING | |
| REFERENCE STANDARD SPEC. SECTION | DWG. NO. 900-05 |
| MAILBOX DETAIL | |



PIPE/POST CONNECTION
ROADWAY VIEW



TAIL PIPE CLAMP



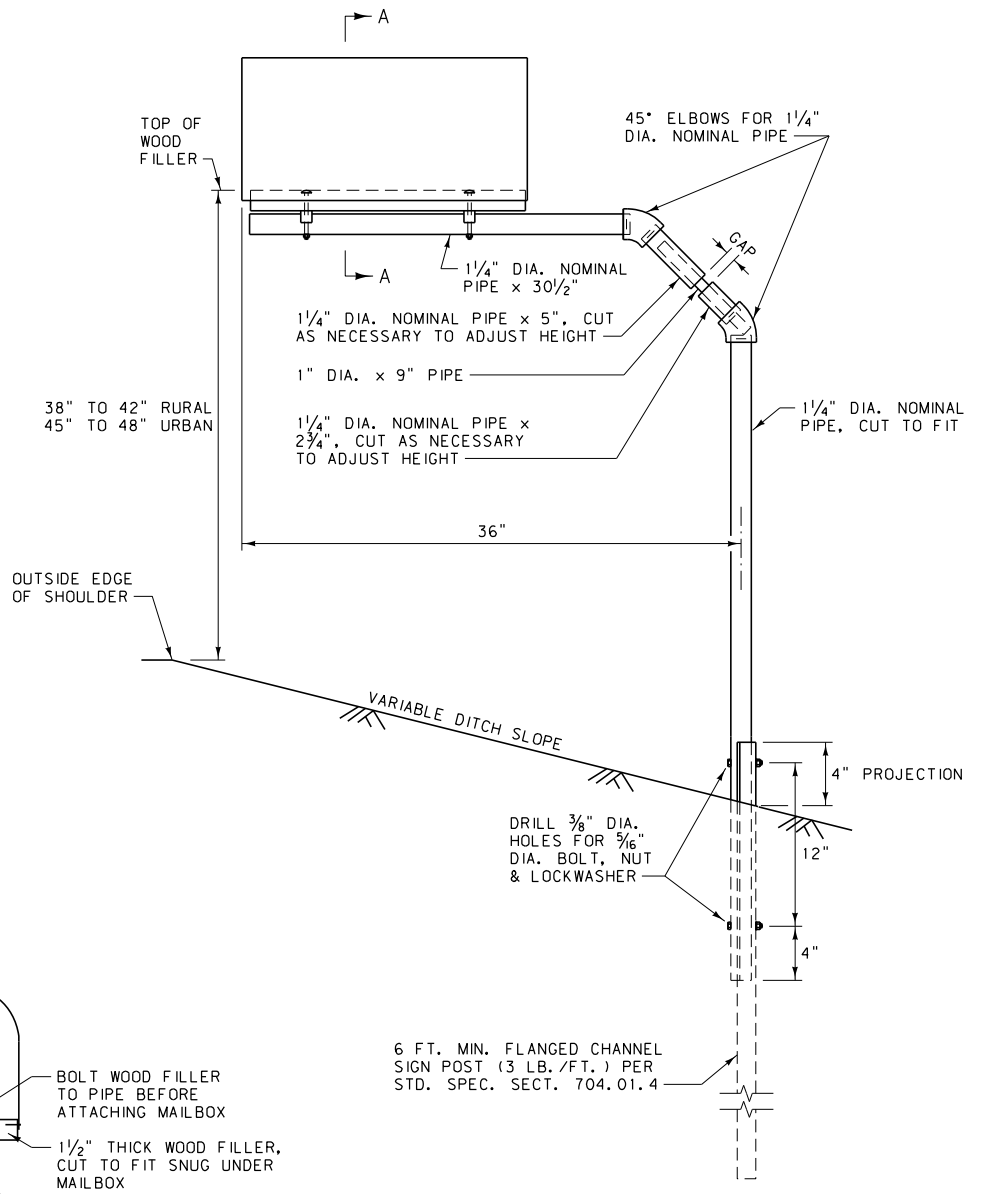
NO. 10 x 1" SHEET METAL SCREWS (9 REQUIRED)

1/2" TAIL PIPE CLAMP (AVAILABLE WHERE AUTOMOBILE TAIL PIPE FITTINGS ARE SOLD)

BOLT WOOD FILLER TO PIPE BEFORE ATTACHING MAILBOX

1/2" THICK WOOD FILLER, CUT TO FIT SNUG UNDER MAILBOX

1/4" DIA. x 4" CARRIAGE BOLTS AND NUTS



NOTES:

GALVANIZE ALL MATERIALS PER AASHTO M 111.


STAKE MAILBOX LOCATIONS BEFORE INSTALLATION FOR PROPER HEIGHT AND DISTANCE FROM THE ROADWAY. ONCE STAKED, NOTIFY THE ENGINEER AND THE POST OFFICE. THE ENGINEER AND POSTMASTER/MAILCARRIER ARE ALLOWED 48 HOURS TO REVIEW AND MODIFY THE STAKED LOCATIONS PRIOR TO FINAL INSTALLATION.

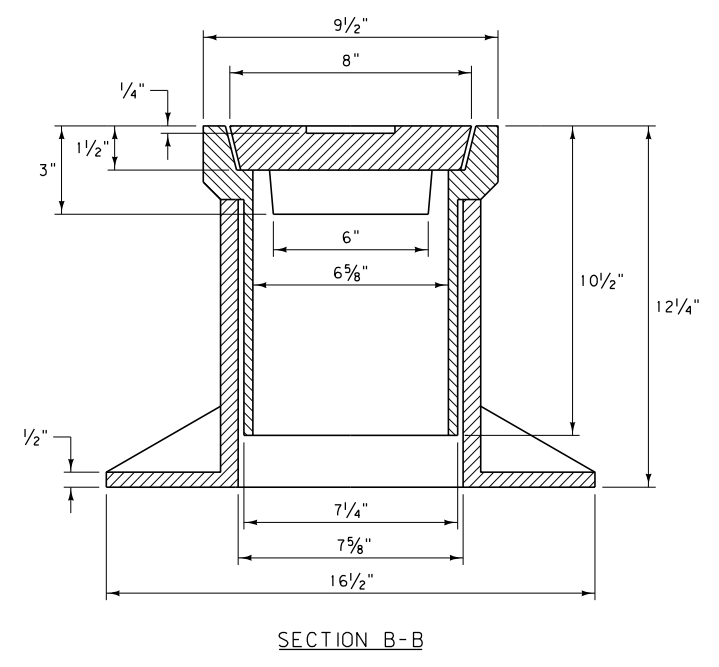
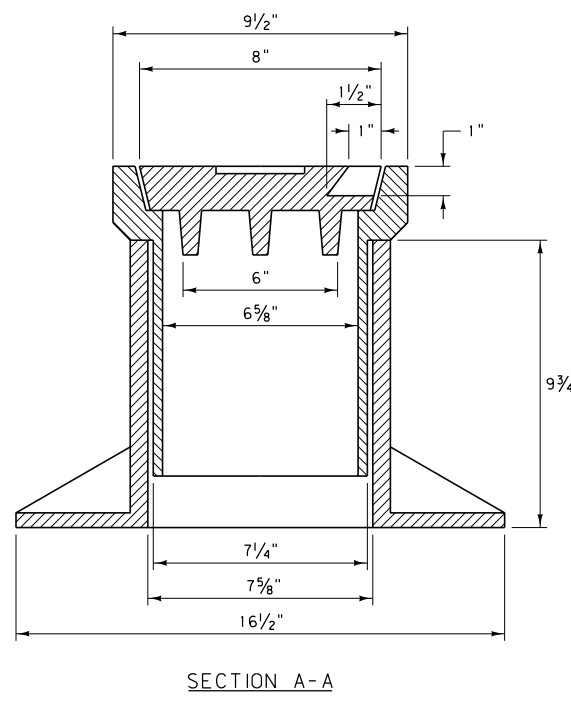
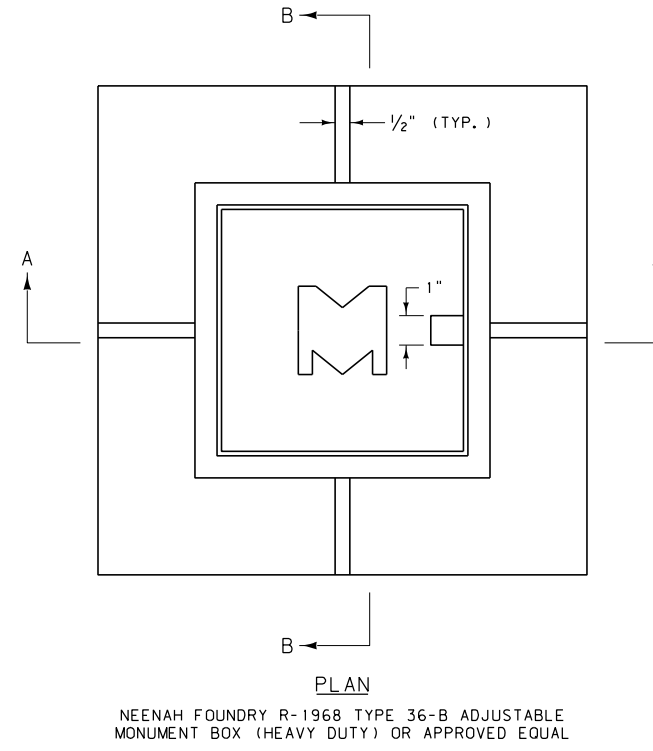
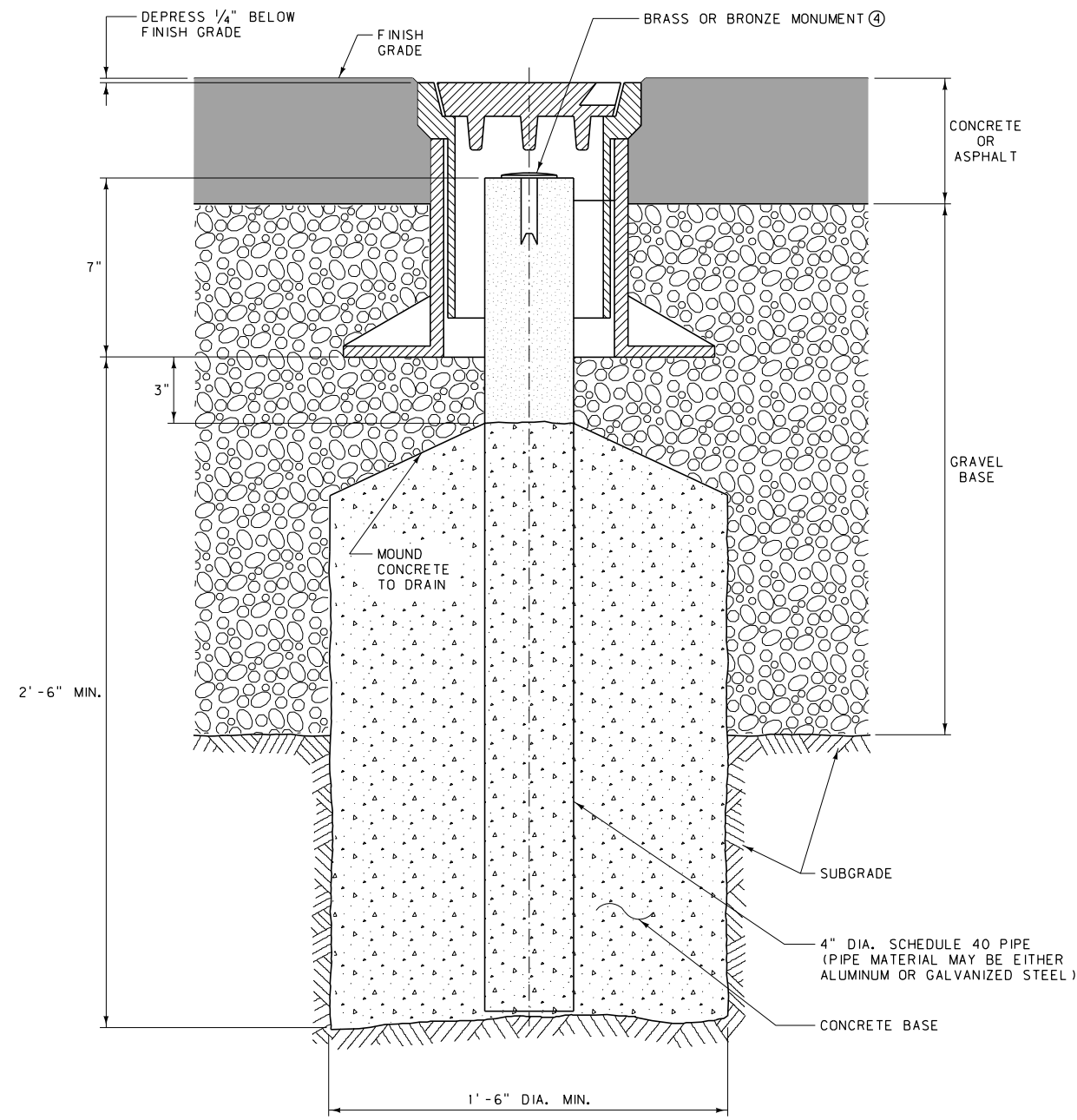
OTHER CRASH TESTED MAILBOX SUPPORTS AND ASSEMBLIES MAY ALSO BE USED.

LOCATE THE MAILBOX 8 TO 12 INCHES OUTSIDE THE EDGE OF THE SHOULDER OR 6 TO 12 INCHES FROM THE FACE OF CURB.


USE MAILBOXES MEETING THE REQUIREMENTS OF THE STANDARD SPECIFICATIONS.

SEE "A GUIDE TO MAILBOX SAFETY IN MONTANA", 1996 EDITION, FOR ADDITIONAL INFORMATION.

| | |
|--|-----------------|
| DETAILED DRAWING | |
| REFERENCE STANDARD SPEC. SECTION | DWG. NO. 900-10 |
| OPTIONAL MAILBOX DETAIL | |
| EFFECTIVE: FEBRUARY 2005 | |
|  MONTANA DEPARTMENT OF TRANSPORTATION <i>servicing you with pride</i> | |



- NOTES:
- INSTALL THE 4" DIA. PIPE, CONCRETE BASE AND ADJUSTABLE MONUMENT BOX AS DETAILED. PLACE CONCRETE IN THE PIPE UP TO 10" BELOW THE TOP OF THE PIPE (DO NOT FILL COMPLETELY.)
 - POSITION THE CENTER OF THE PIPE TO WITHIN 1/2" HORIZONTALLY OF THE DESIRED COORDINATES AND CENTER THE MONUMENT BOX OVER THE PIPE.
 - DEPENDING ON CONTRACT REQUIREMENTS, EITHER MDT FORCES UNDER THE DIRECTION OF A MONTANA PROFESSIONAL LAND SURVEYOR OR CONTRACTOR FORCES UNDER THE DIRECTION OF A MONTANA PROFESSIONAL LAND SURVEYOR WILL BE REQUIRED TO SET AND MARK THE BRASS OR BRONZE MONUMENT WITHIN THE BOX AFTER CONSTRUCTION. THE MONTANA PROFESSIONAL LAND SURVEYOR WILL BE REQUIRED TO PREPARE AND FILE CORNER RECORDATIONS IN ACCORDANCE WITH STATE STATUTES, ADMINISTRATIVE RULES OF MONTANA AND PROVISIONS OF THE MDT SURVEY MANUAL. PROVIDE COPIES OF FILED CORNER RECORDATIONS TO THE MDT ENGINEERING PROJECT MANAGER.
 - AN ACCEPTABLE BRONZE MONUMENT IS THE "BERNTSEN C25DB" OR APPROVED EQUAL. AN ACCEPTABLE BRASS MONUMENT IS THE "SURV-KAP M/M-BCS-2 1/2 D" OR APPROVED EQUAL.
 - ALL CONCRETE IS CLASS DD OR APPROVED EQUAL.

| | |
|--|-----------------|
| DETAILED DRAWING | |
| REFERENCE STANDARD SPEC. SECTION | DWG. NO. 900-15 |
| ADJUSTABLE MONUMENT BOX | |
| EFFECTIVE: APRIL 2006 | |
|  MONTANA DEPARTMENT OF TRANSPORTATION | |