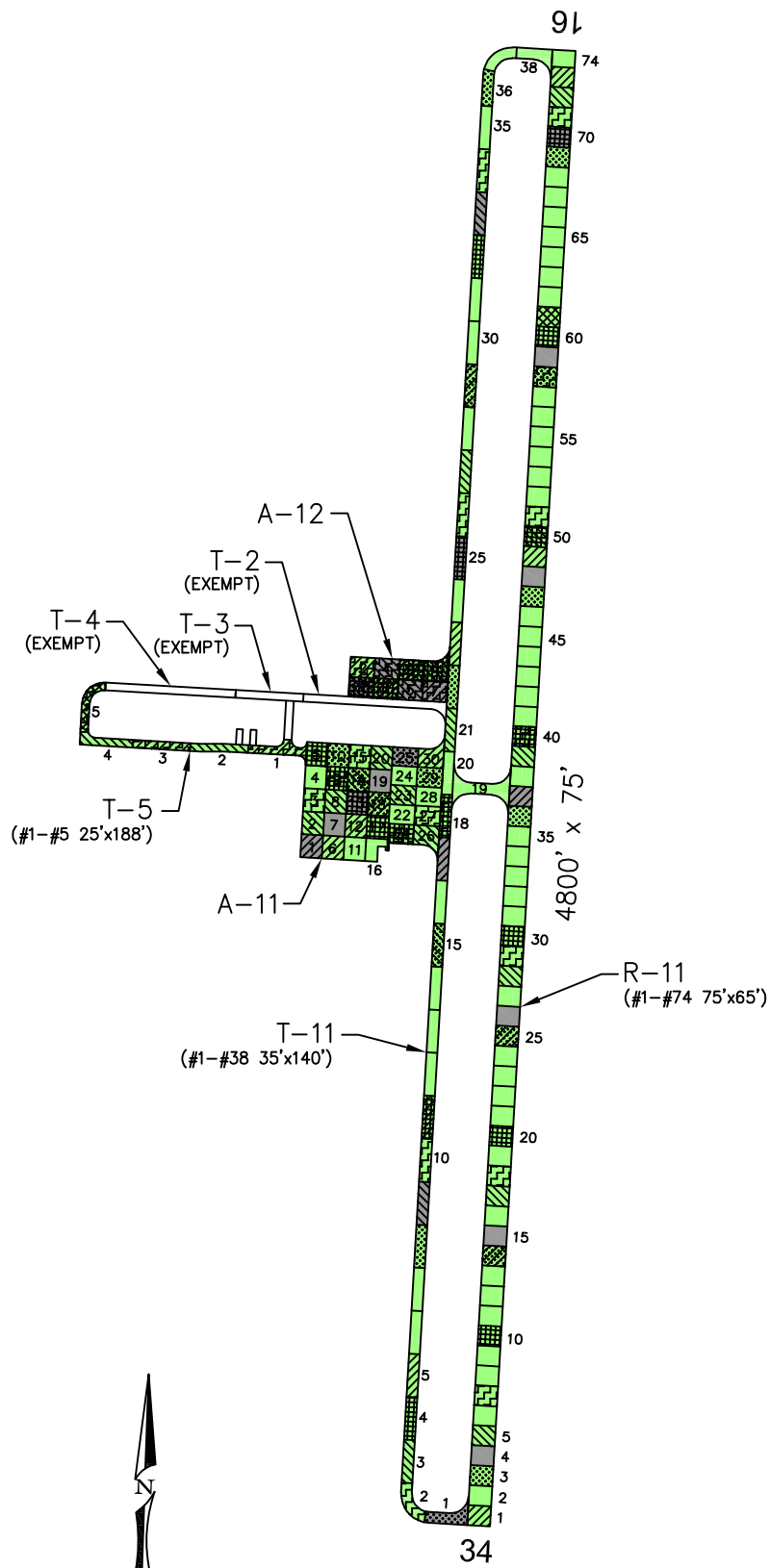
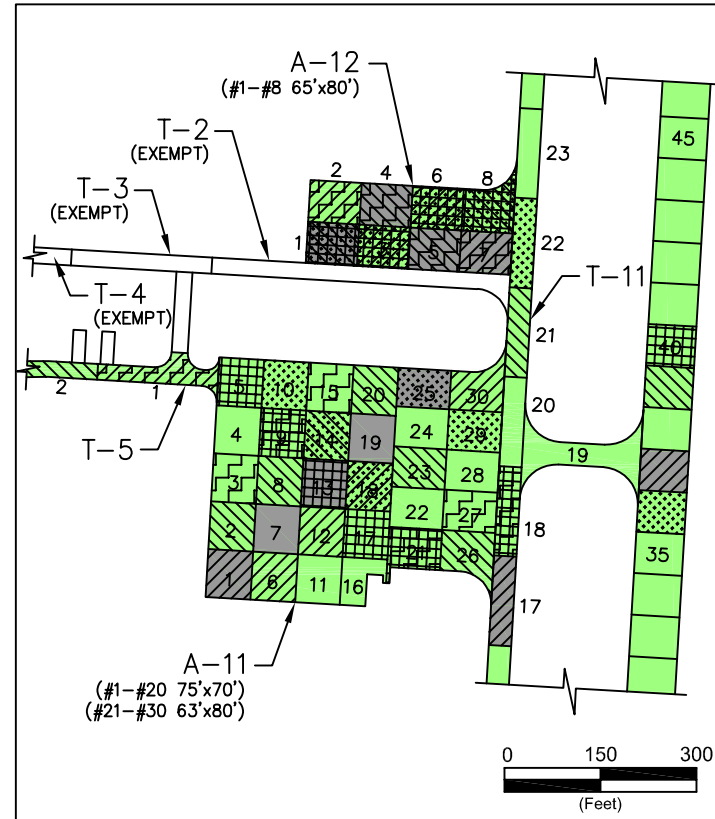


RONAN



PAVEMENT STRENGTH SURVEY/PAVEMENT CONDITION SURVEY

PAVE. IDENT.	SOIL CLASS	SUB GRADE CLASS	SUBBASE COURSE	BASE COURSE	SURFACE COURSE	OVERLAY	PAVEMENT STRENGTH			REMARKS
							MAX. GROSS LOAD (LBS)			
							SINGLE	DUAL	DUAL TAN.	
RUNWAYS										
R-11		19"P-152	8.5" P-154 FABRIC	6" P-208	2.5" P-401	P-609	20,000			3,5,7
TAXIWAYS										
T-2		CBR=13	FABRIC	4"FDM,10"AGG.	2" P-401	P-609	16,000			1,5,7
T-3				UNKNOWN	UNKNOWN	P-609	UNKNOWN			2,5,7
T-4			FABRIC	14.5" P-208	3" P-401	P-609				4,5,7
T-5		CBR=8.5	19" P-152 FABRIC	14.5" P-208	3" P-403	P-609	13,000			6,7
T-11		19"P-152	8.5" P-154 FABRIC	6" P-208	2.5" P-401	P-609	20,000			3,5,7
APRONS										
A-11		19"P-152	8.5" P-154 FABRIC	6" P-208	2.5" P-401	P-609	20,000			3,5,7
A-12		19"P-152	8.5" P-154 FABRIC	6" P-208	2.5" P-401	P-609	20,000			3,5,7

REMARKS:

- AIP-001
- AIP-002-1989
- 1. AIP-003-1992
- 2. NON-AIP, POST-1992
- 3. AIP-004-2000, RECONSTRUCT AND EXTEND RUNWAY 16/34 (R-11); RECONSTRUCT AND ENLARGE APRON (A-11); CONSTRUCT PARALLEL TAXIWAY (T-11); CONSTRUCT MULTI-USE APRON (A-12).
- 4. AIP-005-2003, CONSTRUCT TAXILANE EXTENSION (T-4).
- 5. AIP-008-2007, CRACK SEAL, FOG SEAL, AND REMARK ALL PAVEMENTS.
- 6. AIP-009-2008, CONSTRUCT TAXILANE (T-5).
- 7. AIP-010-2013, CRACK SEAL, FOG SEAL, AND REMARK ALL PAVEMENTS.

LEGEND

- 2006 SURVEY AREA
- 2009 SURVEY AREA
- 2012 SURVEY AREA
- 2015 SURVEY AREA
- 2018 SURVEY AREA
- MAINTAIN: PCI > 60
- TRANSITION: PCI 45 TO 60
- RECONSTRUCT: PCI < 45

DATE OF PAVEMENT STRENGTH SURVEY:	
EVALUATED BY:	
DATE OF MOST RECENT PAVEMENT CONDITION SURVEY:	SEPT. 18, 2018
EVALUATED BY:	S. BROWN
LOCATION:	RONAN MONTANA

**MONTANA AVIATION SYSTEM PLAN
2018 UPDATE - PAVEMENT CONDITION INDEXES**

**RONAN AIRPORT
(750)**

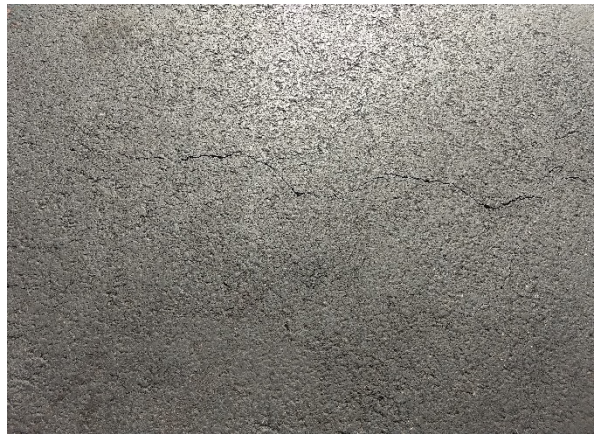
Date: Prepared For: Prepared By:

DECEMBER 2018





A-11 Overview



A-11, Cracks



R-11, Overview



R-11, Crack and Mechanical Raveling



T-5, Overview



T-5, Patch



T-11, Overview



T-11, Surface Detail and Spilled Oil

RONAN AIRPORT

Branch: 53A **APRON**

A-11

Length: 440 LF **Width:** 370 LF **Area:** 162,800 SF **Last Const:** 2000 **Family:** ACAM
From: T-11 **To:** TIEDOWNS **Surface:** AC

Inspections

Samples Surveyed: 5 **Total Samples:** 30 **Last Inspection Date:** 9/18/2018 **PCI:** 76

Sample # 3 **Area:** 4,900 SF

Distress Description	Severity	Quantity
RAVELING	H	0.08 SF
PATCHING	L	6 SF
WEATHERING	L	4900 SF
LONGITUDINAL/TRANSVERSE CRACKING	L	32 LF

Sample # 9 **Area:** 4,900 SF

Distress Description	Severity	Quantity
LONGITUDINAL/TRANSVERSE CRACKING	L	280 LF
WEATHERING	L	4900 SF
LONGITUDINAL/TRANSVERSE CRACKING	M	8 LF
PATCHING	L	28 SF
RAVELING	H	0.17 SF

Sample # 15 **Area:** 4,900 SF

Distress Description	Severity	Quantity
WEATHERING	L	4900 SF
LONGITUDINAL/TRANSVERSE CRACKING	L	24 LF
LONGITUDINAL/TRANSVERSE CRACKING	L	189 LF

Sample # 21 **Area:** 5,040 SF

Distress Description	Severity	Quantity
WEATHERING	L	4721 SF
RAVELING	L	319 SF
PATCHING	L	32.6 SF
LONGITUDINAL/TRANSVERSE CRACKING	L	307 LF
LONGITUDINAL/TRANSVERSE CRACKING	M	5 LF
DEPRESSION	L	52 SF

Sample # 27 **Area:** 5,040 SF

Distress Description	Severity	Quantity
PATCHING	L	0.14 SF
LONGITUDINAL/TRANSVERSE CRACKING	L	82 LF
WEATHERING	L	5040 SF

Extrapolated Distress Quantities*

Distress Description	Severity	Quantity	Density	Deduct
DEPRESSION	LOW	342 SF	0.21%	0.86
LONGITUDINAL/TRANSVERSE CRACKING	LOW	6,005 LF	3.69%	11.77
LONGITUDINAL/TRANSVERSE CRACKING	MEDIUM	85 LF	0.05%	4.00
PATCHING	LOW	438 SF	0.27%	2.08
RAVELING	HIGH	2 SF	0.00%	6.00
RAVELING	LOW	2,096 SF	1.29%	3.05
WEATHERING	LOW	160,704 SF	98.71%	5.95

* Multiple deduct values are scaled down from their algebraic sum to keep the model consistent with experimental data.

Percent of Deduct Values Based on Distress Mechanism

0.0 % Load 97.0 % Climate/Durability 3.0 % Other

RONAN AIRPORT

Branch: 53A **APRON**

A-12

Length: 320 LF **Width:** 130 LF **Area:** 41,600 SF **Last Const:** 2000 **Family:** ACAM
From: T-11 **To:** TIEDOWNS/HANGARS **Surface:** AC

Inspections

Samples Surveyed: 4 **Total Samples:** 8 **Last Inspection Date:** 9/18/2018 **PCI:** 75

Sample # 2 **Area:** 5,200 SF

Distress Description	Severity	Quantity
WEATHERING	L	4784.35 SF
RAVELING	L	415.65 SF
LONGITUDINAL/TRANSVERSE CRACKING	L	208 LF

Sample # 4 **Area:** 5,200 SF

Distress Description	Severity	Quantity
OIL SPILLAGE	NA	47.4 SF
RAVELING	L	692.75 SF
LONGITUDINAL/TRANSVERSE CRACKING	L	218 LF
WEATHERING	L	4507.25 SF
PATCHING	L	28 SF
OIL SPILLAGE	NA	8.34 SF

Sample # 5 **Area:** 5,200 SF

Distress Description	Severity	Quantity
OIL SPILLAGE	NA	0.1 SF
PATCHING	L	2 SF
RAVELING	L	46.2 SF
LONGITUDINAL/TRANSVERSE CRACKING	L	163 LF
WEATHERING	L	5172.5 SF

Sample # 7 **Area:** 5,200 SF

Distress Description	Severity	Quantity
WEATHERING	L	5038.5 SF
PATCHING	L	2 SF
RAVELING	L	408.7 SF
LONGITUDINAL/TRANSVERSE CRACKING	M	16 LF
LONGITUDINAL/TRANSVERSE CRACKING	L	87 LF

Extrapolated Distress Quantities*

Distress Description	Severity	Quantity	Density	Deduct
LONGITUDINAL/TRANSVERSE CRACKING	LOW	1,352 LF	3.25%	10.68
LONGITUDINAL/TRANSVERSE CRACKING	MEDIUM	32 LF	0.08%	4.00
OIL SPILLAGE	N/A	112 SF	0.27%	2.77
PATCHING	LOW	64 SF	0.15%	2.01
RAVELING	LOW	3,127 SF	7.52%	8.48
WEATHERING	LOW	39,005 SF	93.76%	5.91

* Multiple deduct values are scaled down from their algebraic sum to keep the model consistent with experimental data.

Percent of Deduct Values Based on Distress Mechanism

0.0 % Load 92.0 % Climate/Durability 8.0 % Other

RONAN AIRPORT				Branch: 53R	RUNWAY	R-11
Length: 4,800 LF	Width: 75 LF	Area: 360,000 SF	Last Const: 2000	Family: ACRML		
From: STA 8+00	To: STA 56+00			Surface: AC		

Inspections

Samples Surveyed: 7	Total Samples: 74	Last Inspection Date: 9/18/2018	PCI: 70
Sample # 7	Distress Description	Severity	Quantity
	LONGITUDINAL/TRANSVERSE CRACKING	M	2 LF
	LONGITUDINAL/TRANSVERSE CRACKING	L	409 LF
	WEATHERING	L	4875 SF
	Area:		4,875 SF
Sample # 18	Distress Description	Severity	Quantity
	LONGITUDINAL/TRANSVERSE CRACKING	M	6 LF
	DEPRESSION	L	0.005 SF
	WEATHERING	L	4875 SF
	LONGITUDINAL/TRANSVERSE CRACKING	L	617 LF
	RAVELING	H	0.7 SF
	Area:		4,875 SF
Sample # 29	Distress Description	Severity	Quantity
	LONGITUDINAL/TRANSVERSE CRACKING	L	399 LF
	WEATHERING	L	4875 SF
	Area:		4,875 SF
Sample # 40	Distress Description	Severity	Quantity
	LONGITUDINAL/TRANSVERSE CRACKING	L	501 LF
	LONGITUDINAL/TRANSVERSE CRACKING	M	42 LF
	Area:		4,875 SF
Sample # 51	Distress Description	Severity	Quantity
	LONGITUDINAL/TRANSVERSE CRACKING	L	360 LF
	LONGITUDINAL/TRANSVERSE CRACKING	M	16 LF
	WEATHERING	L	4875 SF
	Area:		4,875 SF
Sample # 58	Distress Description	Severity	Quantity
	WEATHERING	L	4875 SF
	LONGITUDINAL/TRANSVERSE CRACKING	L	387 LF
	LONGITUDINAL/TRANSVERSE CRACKING	M	13 LF
	Area:		4,875 SF
Sample # 71	Distress Description	Severity	Quantity
	PATCHING	L	0.14 SF
	LONGITUDINAL/TRANSVERSE CRACKING	L	383 LF
	WEATHERING	L	4875 SF
	Area:		4,875 SF

Extrapolated Distress Quantities*

Distress Description	Severity	Quantity	Density	Deduct
DEPRESSION	LOW	0 SF	0.00%	0.30
LONGITUDINAL/TRANSVERSE CRACKING	LOW	32,239 LF	8.96%	21.80
LONGITUDINAL/TRANSVERSE CRACKING	MEDIUM	833 LF	0.23%	5.61
PATCHING	LOW	1 SF	0.00%	2.00
RAVELING	HIGH	7 SF	0.00%	6.00
WEATHERING	LOW	308,571 SF	85.71%	5.80

* Multiple deduct values are scaled down from their algebraic sum to keep the model consistent with experimental data.

Percent of Deduct Values Based on Distress Mechanism

0.0 % Load	99.0 % Climate/Durability	1.0 % Other
------------	---------------------------	-------------

RONAN AIRPORT

Branch: 53T TAXIWAY

T-5

Length: 940 LF **Width:** 25 LF **Area:** 23,500 SF **Last Const:** 2008 **Family:** ACRML
From: A-11 **To:** T-4 **Surface:** AC

Inspections

Samples Surveyed: 3 **Total Samples:** 5 **Last Inspection Date:** 9/18/2018 **PCI:** 91

Sample # 1	Distress Description WEATHERING LONGITUDINAL/TRANSVERSE CRACKING	Severity L L	Quantity 4700 SF 25 LF	Area: 4,700 SF
Sample # 3	Distress Description WEATHERING PATCHING	Severity L L	Quantity 4700 SF 0.14 SF	Area: 4,700 SF
Sample # 5	Distress Description LONGITUDINAL/TRANSVERSE CRACKING WEATHERING	Severity L L	Quantity 12.5 LF 4700 SF	Area: 4,700 SF

Extrapolated Distress Quantities*

Distress Description	Severity	Quantity	Density	Deduct
LONGITUDINAL/TRANSVERSE CRACKING	LOW	62 LF	0.27%	3.47
PATCHING	LOW	0 SF	0.00%	2.00
WEATHERING	LOW	23,500 SF	100.00%	5.96

* Multiple deduct values are scaled down from their algebraic sum to keep the model consistent with experimental data.

Percent of Deduct Values Based on Distress Mechanism

0.0 % Load 100.0 % Climate/Durability 0.0 % Other

RONAN AIRPORT					Branch: 53T	TAXIWAY	T-11
Length: 5,505 LF	Width: 35 LF	Area: 192,675 SF	Last Const: 2000	Family: ACRML			
From: R-11	To: A-11			Surface: AC			

Inspections

Samples Surveyed:	5	Total Samples:	38	Last Inspection Date:	9/18/2018	PCI:	74
Sample #	2					Area:	4,900 SF
	Distress Description	Severity	Quantity				
	WEATHERING	L	4900 SF				
	LONGITUDINAL/TRANSVERSE CRACKING	L	316 LF				
	LONGITUDINAL/TRANSVERSE CRACKING	M	7 LF				
Sample #	10					Area:	4,900 SF
	Distress Description	Severity	Quantity				
	RAVELING	H	2.8 SF				
	WEATHERING	L	4900 SF				
	LONGITUDINAL/TRANSVERSE CRACKING	L	335 LF				
Sample #	18					Area:	4,900 SF
	Distress Description	Severity	Quantity				
	LONGITUDINAL/TRANSVERSE CRACKING	M	2 LF				
	LONGITUDINAL/TRANSVERSE CRACKING	L	440 LF				
	WEATHERING	L	4900 SF				
Sample #	26					Area:	4,900 SF
	Distress Description	Severity	Quantity				
	WEATHERING	L	4900 SF				
	LONGITUDINAL/TRANSVERSE CRACKING	L	312 LF				
Sample #	34					Area:	4,900 SF
	Distress Description	Severity	Quantity				
	WEATHERING	L	4900 SF				
	LONGITUDINAL/TRANSVERSE CRACKING	L	290 LF				

Extrapolated Distress Quantities*

Distress Description	Severity	Quantity	Density	Deduct
LONGITUDINAL/TRANSVERSE CRACKING	LOW	13,314 LF	6.91%	18.49
LONGITUDINAL/TRANSVERSE CRACKING	MEDIUM	71 LF	0.04%	4.00
RAVELING	HIGH	22 SF	0.01%	6.00
WEATHERING	LOW	192,675 SF	100.00%	5.96

* Multiple deduct values are scaled down from their algebraic sum to keep the model consistent with experimental data.

Percent of Deduct Values Based on Distress Mechanism

0.0 % Load 100.0 % Climate/Durability 0.0 % Other

RONAN AIRPORT (53)

FIFTEEN YEAR PROJECTIONS ESTIMATED AVERAGE ANNUAL COST: **\$94,449**

Plan Year: 2019		Estimated Cost:					\$297,019	PCI	
Section	Maintenance	Local	Global	Major<Crit	Major>Crit	Total	Before	After	
A-11	Preventive + Global MR	\$4,500	\$55,352	\$0	\$0	\$59,851	76	80	
A-12	Preventive + Global MR	\$1,319	\$14,144	\$0	\$0	\$15,463	75	79	
R-11	Preventive + Global MR	\$18,917	\$122,399	\$0	\$0	\$141,316	69	75	
T-11	Preventive + Global MR	\$6,890	\$65,509	\$0	\$0	\$72,399	74	78	
T-5	Global MR	\$0	\$7,990	\$0	\$0	\$7,990	91	93	
Plan Year: 2020		Estimated Cost:					\$22,073	PCI	
Section	Maintenance	Local	Global	Major<Crit	Major>Crit	Total	Before	After	
A-11	Preventive	\$2,741	\$0	\$0	\$0	\$2,741	78	78	
A-12	Preventive	\$849	\$0	\$0	\$0	\$849	77	77	
R-11	Preventive	\$13,853	\$0	\$0	\$0	\$13,853	73	73	
T-11	Preventive	\$4,631	\$0	\$0	\$0	\$4,631	76	77	
T-5	None	\$0	\$0	\$0	\$0	\$0	93	93	
Plan Year: 2021		Estimated Cost:					\$26,437	PCI	
Section	Maintenance	Local	Global	Major<Crit	Major>Crit	Total	Before	After	
A-11	Preventive	\$3,568	\$0	\$0	\$0	\$3,568	77	77	
A-12	Preventive	\$1,068	\$0	\$0	\$0	\$1,068	76	76	
R-11	Preventive	\$16,114	\$0	\$0	\$0	\$16,114	71	71	
T-11	Preventive	\$5,687	\$0	\$0	\$0	\$5,687	75	75	
T-5	None	\$0	\$0	\$0	\$0	\$0	92	92	
Plan Year: 2022		Estimated Cost:					\$30,894	PCI	
Section	Maintenance	Local	Global	Major<Crit	Major>Crit	Total	Before	After	
A-11	Preventive	\$4,395	\$0	\$0	\$0	\$4,395	76	76	
A-12	Preventive	\$1,288	\$0	\$0	\$0	\$1,288	75	75	
R-11	Preventive	\$18,468	\$0	\$0	\$0	\$18,468	70	70	
T-11	Preventive	\$6,743	\$0	\$0	\$0	\$6,743	74	74	
T-5	None	\$0	\$0	\$0	\$0	\$0	91	91	
Plan Year: 2023		Estimated Cost:					\$35,794	PCI	
Section	Maintenance	Local	Global	Major<Crit	Major>Crit	Total	Before	After	
A-11	Preventive	\$5,216	\$0	\$0	\$0	\$5,216	74	75	
A-12	Preventive	\$1,508	\$0	\$0	\$0	\$1,508	73	74	
R-11	Preventive	\$21,274	\$0	\$0	\$0	\$21,274	68	68	
T-11	Preventive	\$7,792	\$0	\$0	\$0	\$7,792	72	72	
T-5	Preventive	\$4	\$0	\$0	\$0	\$4	90	90	
Plan Year: 2024		Estimated Cost:					\$306,137	PCI	
Section	Maintenance	Local	Global	Major<Crit	Major>Crit	Total	Before	After	
A-11	Preventive + Global MR	\$6,042	\$55,352	\$0	\$0	\$61,394	73	77	
A-12	Preventive + Global MR	\$1,727	\$14,144	\$0	\$0	\$15,871	72	76	
R-11	Preventive + Global MR	\$24,104	\$122,399	\$0	\$0	\$146,503	67	72	
T-11	Preventive + Global MR	\$8,846	\$65,509	\$0	\$0	\$74,355	71	75	
T-5	Preventive + Global MR	\$24	\$7,990	\$0	\$0	\$8,014	89	92	
Plan Year: 2025		Estimated Cost:					\$30,138	PCI	
Section	Maintenance	Local	Global	Major<Crit	Major>Crit	Total	Before	After	
A-11	Preventive	\$4,291	\$0	\$0	\$0	\$4,291	76	76	
A-12	Preventive	\$1,258	\$0	\$0	\$0	\$1,258	75	75	
R-11	Preventive	\$18,000	\$0	\$0	\$0	\$18,000	70	70	
T-11	Preventive	\$6,589	\$0	\$0	\$0	\$6,589	74	74	
T-5	None	\$0	\$0	\$0	\$0	\$0	91	91	
Plan Year: 2026		Estimated Cost:					\$35,070	PCI	
Section	Maintenance	Local	Global	Major<Crit	Major>Crit	Total	Before	After	
A-11	Preventive	\$5,118	\$0	\$0	\$0	\$5,118	75	75	
A-12	Preventive	\$1,478	\$0	\$0	\$0	\$1,478	74	74	
R-11	Preventive	\$20,826	\$0	\$0	\$0	\$20,826	68	69	
T-11	Preventive	\$7,645	\$0	\$0	\$0	\$7,645	73	73	
T-5	Preventive	\$3	\$0	\$0	\$0	\$3	90	90	
Plan Year: 2027		Estimated Cost:					\$40,011	PCI	
Section	Maintenance	Local	Global	Major<Crit	Major>Crit	Total	Before	After	
A-11	Preventive	\$5,945	\$0	\$0	\$0	\$5,945	73	73	
A-12	Preventive	\$1,697	\$0	\$0	\$0	\$1,697	72	72	
R-11	Preventive	\$23,652	\$0	\$0	\$0	\$23,652	67	67	
T-11	Preventive	\$8,692	\$0	\$0	\$0	\$8,692	71	71	
T-5	Preventive	\$23	\$0	\$0	\$0	\$23	89	89	

RONAN AIRPORT (53)

FIFTEEN YEAR PROJECTIONS ESTIMATED AVERAGE ANNUAL COST: **\$94,449**

Plan Year: 2028		Local	Global	Major<Crit	Estimated Cost: Major>Crit	\$44,988 Total	PCI	
Section	Maintenance						Before	After
A-11	Preventive	\$6,773	\$0	\$0	\$0	\$6,773	72	72
A-12	Preventive	\$1,915	\$0	\$0	\$0	\$1,915	71	71
R-11	Preventive	\$26,478	\$0	\$0	\$0	\$26,478	65	65
T-11	Preventive	\$9,779	\$0	\$0	\$0	\$9,779	70	70
T-5	Preventive	\$43	\$0	\$0	\$0	\$43	88	88

Plan Year: 2029		Local	Global	Major<Crit	Estimated Cost: Major>Crit	\$315,609 Total	PCI	
Section	Maintenance						Before	After
A-11	Preventive + Global MR	\$7,599	\$55,352	\$0	\$0	\$62,950	71	75
A-12	Preventive + Global MR	\$2,151	\$14,144	\$0	\$0	\$16,295	70	74
R-11	Preventive + Global MR	\$29,305	\$122,399	\$0	\$0	\$151,704	64	69
T-11	Preventive + Global MR	\$11,098	\$65,509	\$0	\$0	\$76,607	68	73
T-5	Preventive + Global MR	\$64	\$7,990	\$0	\$0	\$8,054	87	90

Plan Year: 2030		Local	Global	Major<Crit	Estimated Cost: Major>Crit	\$39,244 Total	PCI	
Section	Maintenance						Before	After
A-11	Preventive	\$5,835	\$0	\$0	\$0	\$5,835	74	74
A-12	Preventive	\$1,666	\$0	\$0	\$0	\$1,666	72	73
R-11	Preventive	\$23,184	\$0	\$0	\$0	\$23,184	67	67
T-11	Preventive	\$8,538	\$0	\$0	\$0	\$8,538	71	71
T-5	Preventive	\$21	\$0	\$0	\$0	\$21	89	89

Plan Year: 2031		Local	Global	Major<Crit	Estimated Cost: Major>Crit	\$44,177 Total	PCI	
Section	Maintenance						Before	After
A-11	Preventive	\$6,662	\$0	\$0	\$0	\$6,662	72	72
A-12	Preventive	\$1,885	\$0	\$0	\$0	\$1,885	71	71
R-11	Preventive	\$25,994	\$0	\$0	\$0	\$25,994	66	66
T-11	Preventive	\$9,594	\$0	\$0	\$0	\$9,594	70	70
T-5	Preventive	\$41	\$0	\$0	\$0	\$41	88	88

Plan Year: 2032		Local	Global	Major<Crit	Estimated Cost: Major>Crit	\$49,382 Total	PCI	
Section	Maintenance						Before	After
A-11	Preventive	\$7,488	\$0	\$0	\$0	\$7,488	71	71
A-12	Preventive	\$2,111	\$0	\$0	\$0	\$2,111	70	70
R-11	Preventive	\$28,816	\$0	\$0	\$0	\$28,816	64	64
T-11	Preventive	\$10,905	\$0	\$0	\$0	\$10,905	69	69
T-5	Preventive	\$62	\$0	\$0	\$0	\$62	87	87

Plan Year: 2033		Local	Global	Major<Crit	Estimated Cost: Major>Crit	\$54,698 Total	PCI	
Section	Maintenance						Before	After
A-11	Preventive	\$8,359	\$0	\$0	\$0	\$8,359	70	70
A-12	Preventive	\$2,386	\$0	\$0	\$0	\$2,386	69	69
R-11	Preventive	\$31,646	\$0	\$0	\$0	\$31,646	62	63
T-11	Preventive	\$12,226	\$0	\$0	\$0	\$12,226	67	67
T-5	Preventive	\$82	\$0	\$0	\$0	\$82	87	87