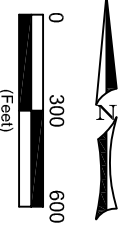
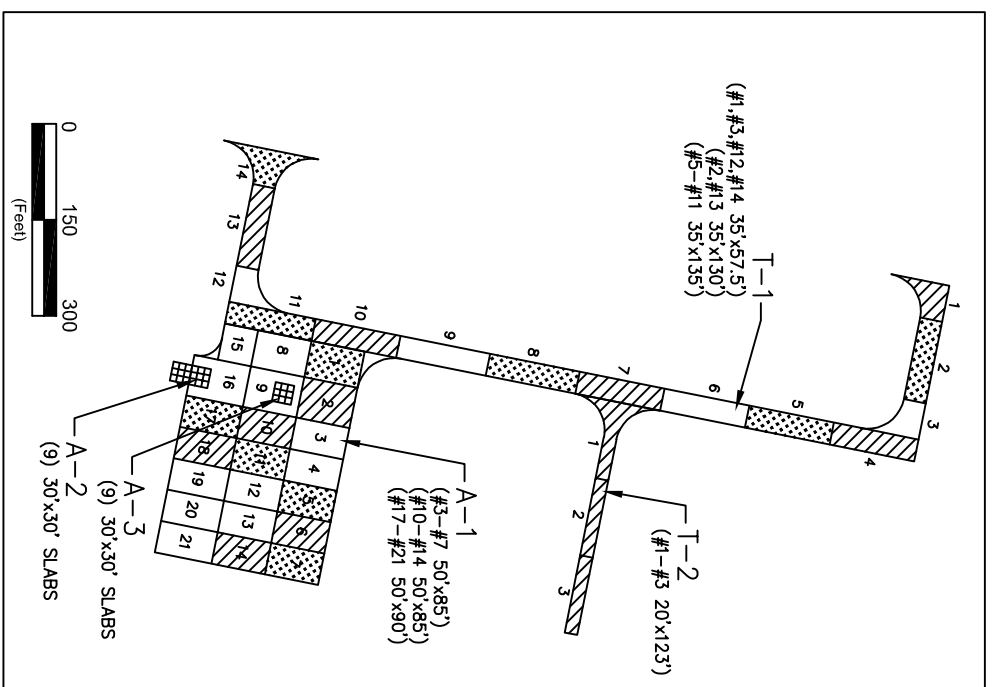
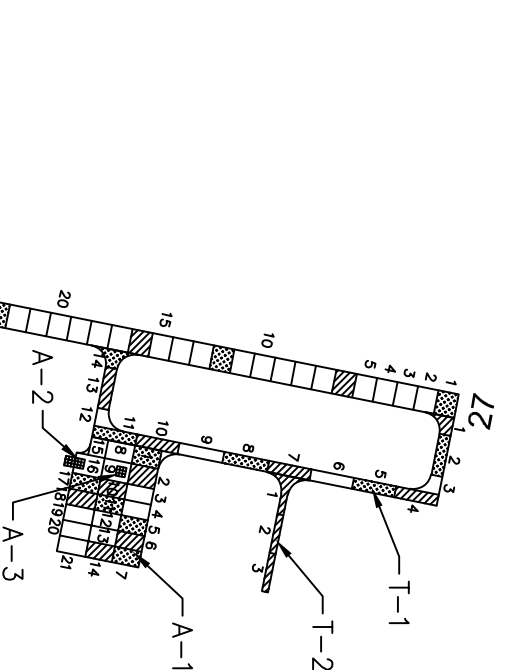


**PAVEMENT STRENGTH SURVEY/PAVEMENT CONDITION SURVEY**



PAVE. IDENT.	SOIL CLASS	SUB GRADE CLASS	SUBBASE COURSE	BASE COURSE	SURFACE COURSE	OVERLAY	PAVEMENT STRENGTH			REMARKS	
							SINGLE	DUAL	DUAL TAN.		
R-1		6" P-152	GEOTEX-FABRIC 9" P-154	6" P-208	3" P-401	P-608	12,500	40,000	66,000	1,2	<b>RUNWAYS</b>
T-1		6" P-152	GEOTEX-FABRIC 9" P-154	6" P-208	3" P-401	P-608	12,500	40,000	66,000	1,2	<b>TAXIWAYS</b>
T-2		6" P-152	GEOTEX-FABRIC 9" P-154	6" P-208	3" P-401	P-608	12,500	40,000	66,000	1,2	
T-3		6" P-152	GEOTEX-FABRIC 9" P-154	6" P-208	3" P-401	P-608	12,500	40,000	66,000	1,2	
<b>APRONS</b>											
A-1		6" P-152	GEOTEX-FABRIC 9" P-154	6" P-208	3" P-401	P-608	12,500	40,000	66,000	1,2	
A-2		6" P-152	GEOTEX-FABRIC 9" P-154	4" P-208	5" P-501		12,500			1	
A-3		6" P-152	GEOTEX-FABRIC 9" P-154	4" P-208	5" P-501		12,500			1	
<b>REMARKS:</b>											
1. AIP-006-2009, NEW POPLAR AIRPORT.											
2. AIP-010-2015, CRACK SEAL, SEAL COAT, AND REMARK RUNWAY, TAXIWAYS, AND APRON (A-1) [INSPECTED AFTER PROJECT].											

**LEGEND**

- 2006 SURVEY AREA
- (N/A) 2009 SURVEY AREA
- (N/A) 2012 SURVEY AREA
- 2015 SURVEY AREA
- 2018 SURVEY AREA (NOT SURVEYED)
- MAINTAIN: PCI > 60
- TRANSITION: PCI 45 TO 60
- RECONSTRUCT: PCI < 45

DATE OF PAVEMENT STRENGTH SURVEY:	EVALUATED BY:	DATE OF MOST RECENT PAVEMENT CONDITION SURVEY:	EVALUATED BY:
	B. BURKLAND	SEPT. 1, 2015	B. BURKLAND

Date: DECEMBER 2018  
Prepared For: MONTANA DEPARTMENT OF TRANSPORTATION  
Prepared By: KLU

**MONTANA AVIATION SYSTEM PLAN**  
**2018 UPDATE - PAVEMENT CONDITION INDEXES**  
**POPLAR AIRPORT**  
(P01)

