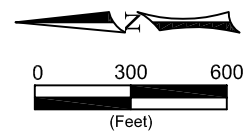
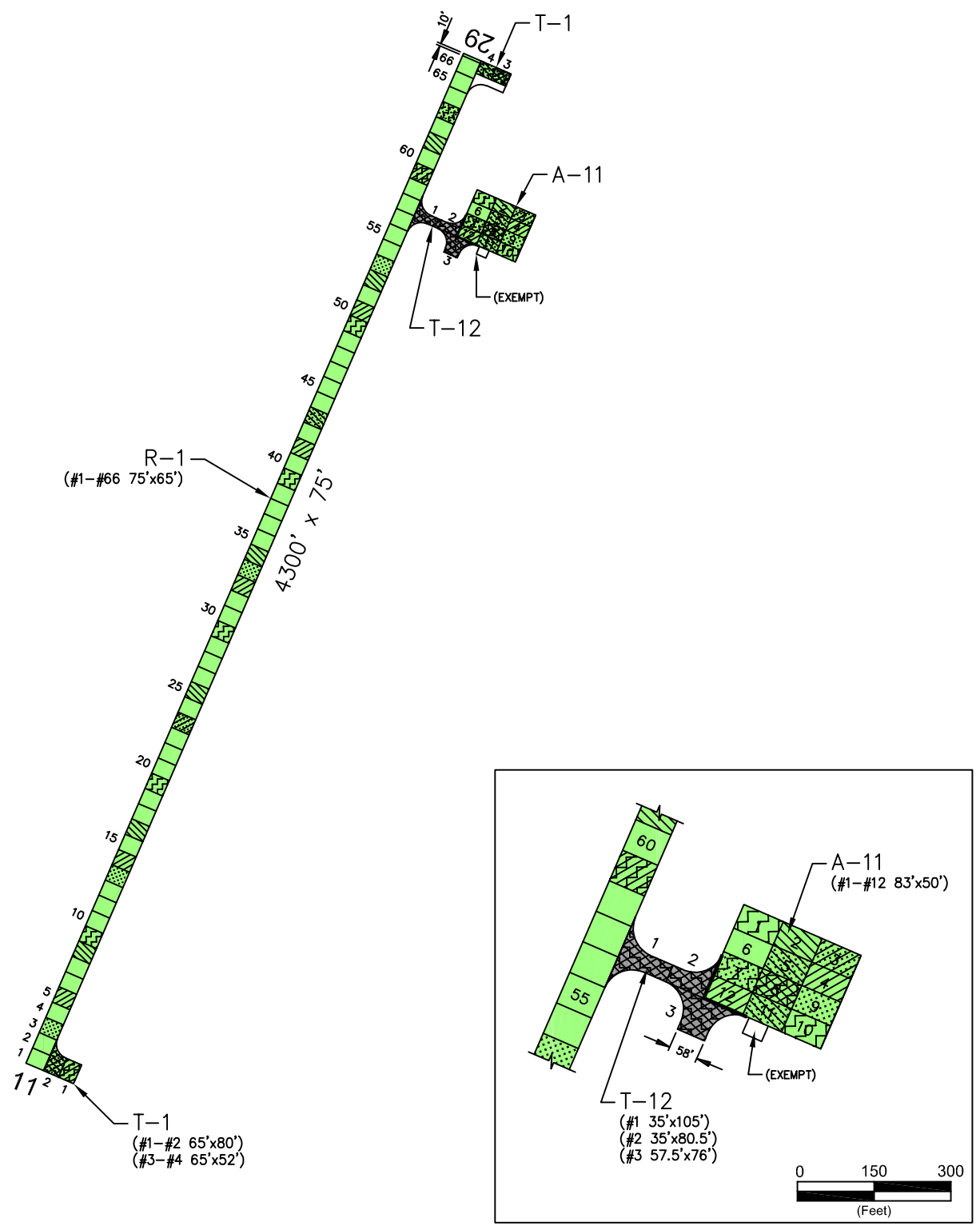


JORDAN

JORDAN



PAVEMENT STRENGTH SURVEY/PAVEMENT CONDITION SURVEY

PAVE. IDENT.	SOIL CLASS	SUB GRADE CLASS	SUBBASE COURSE	BASE COURSE	SURFACE COURSE	OVERLAY	PAVEMENT STRENGTH			REMARKS
							MAX. GROSS LOAD (LBS)			
							SINGLE	DUAL	DUAL TAN.	
RUNWAYS										
R-1	E-7	CBR=2.8	7" P-154	5" P-208	1.5" TRIPLE SHOT	3.5"P-401,P-609	12,500			1,2,3,4
TAXIWAYS										
T-1	E-7	CBR=2.8	7" P-154	5" P-208	P-609	3.5"P-401,P-609	12,500			1,2,3,4
T-12	E-7	CBR=2.8	GEOGRID,FABRIC, 11" P-154	4" P-208	3" P-401	P-609	12,500			2,3,4
APRONS										
A-11	E-7	CBR=2.8	GEOGRID,FABRIC, 11" P-154	4" P-208	3" P-401	P-609	12,500			2,3,4

REMARKS:

ADAP-01, 1981, REHABILITATE RUNWAY AND TAXIWAY, CONSTRUCT RUNWAY EXTENSION, REHABILITATE AND EXPAND APRON.

- AIP-001-1991, RECONSTRUCT RUNWAY.
- AIP-002-2003, RECONSTRUCT APRON AND TAXIWAY (T-12); OVERLAY REMAINING PAVEMENTS.
- AIP-004-2009, CRACK SEAL, FOG SEAL, AND REMARK ALL PAVEMENTS. [INSPECTED AFTER FOG SEAL APPLICATION]
- AIP-005-2014, CRACK SEAL, FOG SEAL, AND REMARK ALL PAVEMENTS.

LEGEND ■ 2006 SURVEY AREA ▨ 2009 SURVEY AREA ▩ 2012 SURVEY AREA ▪ 2015 SURVEY AREA ▫ 2018 SURVEY AREA ■ MAINTAIN: PCI > 60 ■ TRANSITION: PCI 45 TO 60 ■ RECONSTRUCT: PCI < 45	DATE OF PAVEMENT STRENGTH SURVEY:		MONTANA AVIATION SYSTEM PLAN 2018 UPDATE - PAVEMENT CONDITION INDEXES JORDAN AIRPORT (JDN)
	EVALUATED BY:		
	DATE OF MOST RECENT PAVEMENT CONDITION SURVEY:	OCT. 10, 2018	
	EVALUATED BY:	N. SCHROHT	
	LOCATION:	JORDAN MONTANA	Date: DECEMBER 2018 Prepared For: MONTANA DEPARTMENT OF TRANSPORTATION Prepared By: KLJ



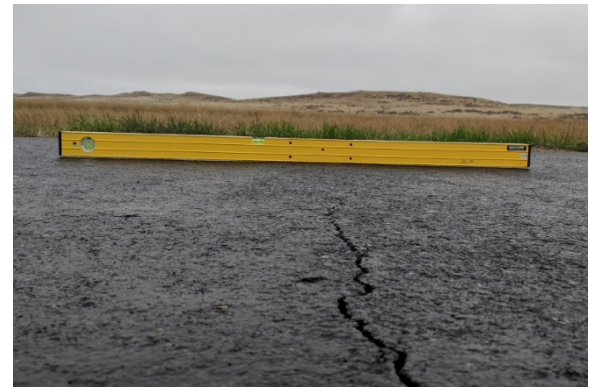
A-11, Overview



A-11, Dense Grade - Raveling



R-11, Overview



R-11, Swell



T-1, Overview



T-1, Cracking

JORDAN AIRPORT

Branch: 37A APRON **A-11**

Length: 250 LF **Width:** 200 LF **Area:** 50,000 SF **Last Const:** 2003 **Family:** ACAM
From: T-12 **To:** **Surface:** AC

Inspections

Samples Surveyed: 4 **Total Samples:** 12 **Last Inspection Date:** 10/10/2018 **PCI:** 75

Sample # 1	<p>Distress Description SWELL LONGITUDINAL/TRANSVERSE CRACKING WEATHERING LONGITUDINAL/TRANSVERSE CRACKING</p>	<p>Severity L L L M</p>	<p>Quantity 20 SF 79 LF 4,150 SF 8 LF</p>	Area: 4,150 SF
-------------------	---	--	--	-----------------------

Sample # 7	<p>Distress Description LONGITUDINAL/TRANSVERSE CRACKING WEATHERING LONGITUDINAL/TRANSVERSE CRACKING DEPRESSION</p>	<p>Severity M L L L</p>	<p>Quantity 44 LF 4,150 SF 154 LF 70 SF</p>	Area: 4,150 SF
-------------------	--	--	--	-----------------------

Sample # 8	<p>Distress Description DEPRESSION RAVELING PATCHING RAVELING LONGITUDINAL/TRANSVERSE CRACKING LONGITUDINAL/TRANSVERSE CRACKING WEATHERING</p>	<p>Severity L M L L M L L</p>	<p>Quantity 4 SF 4 SF 49 SF 447 SF 32 LF 80 LF 4,150 SF</p>	Area: 4,150 SF
-------------------	--	---	---	-----------------------

Sample # 10	<p>Distress Description RAVELING WEATHERING LONGITUDINAL/TRANSVERSE CRACKING LONGITUDINAL/TRANSVERSE CRACKING</p>	<p>Severity L L L M</p>	<p>Quantity 80 SF 4,150 SF 159 LF 43 LF</p>	Area: 4,150 SF
--------------------	--	--	--	-----------------------

Extrapolated Distress Quantities*

Distress Description	Severity	Quantity	Density	Deduct
DEPRESSION	LOW	262 SF	0.52%	3.48
LONGITUDINAL/TRANSVERSE CRACKING	LOW	1,524 LF	3.05%	10.17
LONGITUDINAL/TRANSVERSE CRACKING	MEDIUM	382 LF	0.76%	9.98
PATCHING	LOW	49 SF	0.10%	2.00
RAVELING	LOW	742 SF	1.48%	3.32
RAVELING	MEDIUM	4 SF	0.01%	4.00
SWELL	LOW	74 SF	0.15%	1.35
WEATHERING	LOW	50,000 SF	100.00%	5.96

* Multiple deduct values are scaled down from their algebraic sum to keep the model consistent with experimental data.

Percent of Deduct Values Based on Distress Mechanism

0.0 % Load 88.0 % Climate/Durability 12.0 % Other

JORDAN AIRPORT

Branch: 37-R RUNWAY

R-1

Length: 4,300 LF
From: 0+00

Width: 75 LF

Area: 322,500 SF
To: 43+00

Last Const: 2003

Family: ACRML
Surface: AC

Inspections

Samples Surveyed: 7 **Total Samples:** 67 **Last Inspection Date:** 10/10/2018 **PCI:** 72

Sample # 9	<p>Distress Description WEATHERING LONGITUDINAL/TRANSVERSE CRACKING</p>	<p>Severity L L</p>	<p>Quantity 4,875 SF 384 LF</p>	Area: 4,875 SF
Sample # 19	<p>Distress Description WEATHERING SWELL LONGITUDINAL/TRANSVERSE CRACKING PATCHING</p>	<p>Severity L L L L</p>	<p>Quantity 4,875 SF 10 SF 438 LF 0.4 SF</p>	Area: 4,875 SF
Sample # 29	<p>Distress Description LONGITUDINAL/TRANSVERSE CRACKING WEATHERING DEPRESSION LONGITUDINAL/TRANSVERSE CRACKING</p>	<p>Severity M L L L</p>	<p>Quantity 16 LF 4,875 SF 5 SF 370 LF</p>	Area: 4,875 SF
Sample # 39	<p>Distress Description LONGITUDINAL/TRANSVERSE CRACKING WEATHERING PATCHING LONGITUDINAL/TRANSVERSE CRACKING</p>	<p>Severity M L L L</p>	<p>Quantity 5 LF 4,875 SF 0.2 SF 306 LF</p>	Area: 4,875 SF
Sample # 49	<p>Distress Description LONGITUDINAL/TRANSVERSE CRACKING WEATHERING</p>	<p>Severity L L</p>	<p>Quantity 462 LF 4,875 SF</p>	Area: 4,875 SF
Sample # 63	<p>Distress Description WEATHERING LONGITUDINAL/TRANSVERSE CRACKING PATCHING</p>	<p>Severity L L L</p>	<p>Quantity 4,875 SF 488 LF 1 SF</p>	Area: 4,875 SF

Extrapolated Distress Quantities*

Distress Description	Severity	Quantity	Density	Deduct
DEPRESSION	LOW	47 SF	0.01%	0.30
LONGITUDINAL/TRANSVERSE CRACKING	LOW	26,802 LF	8.31%	20.82
LONGITUDINAL/TRANSVERSE CRACKING	MEDIUM	198 LF	0.06%	4.00
PATCHING	LOW	14 SF	0.00%	2.00
SWELL	LOW	95 SF	0.03%	1.00
WEATHERING	LOW	322,500 SF	100.00%	5.96

* Multiple deduct values are scaled down from their algebraic sum to keep the model consistent with experimental data.

Percent of Deduct Values Based on Distress Mechanism

0.0 % Load 96.0 % Climate/Durability 4.0 % Other

JORDAN AIRPORT

Branch: 37-T TAXIWAY **T-1**

Length: 272 LF **Width:** 85 LF **Area:** 24,538 SF **Last Const:** 2003 **Family:** ACRML
From: RUNWAY 10-28 **To:** **Surface:** AC

Inspections

Samples Surveyed: 3 **Total Samples:** 4 **Last Inspection Date:** 10/10/2018 **PCI:** **82**

Sample # 1 **Area:** 5,200 SF

Distress Description	Severity	Quantity
WEATHERING	L	5,200 SF
RAVELING	H	30 SF

Sample # 3 **Area:** 3,380 SF

Distress Description	Severity	Quantity
WEATHERING	L	3,380 SF
LONGITUDINAL/TRANSVERSE CRACKING	L	56 LF
SWELL	M	30 SF

Sample # 4 **Area:** 3,380 SF

Distress Description	Severity	Quantity
WEATHERING	L	3,380 SF
LONGITUDINAL/TRANSVERSE CRACKING	L	26 LF
LONGITUDINAL/TRANSVERSE CRACKING	M	5 LF

Extrapolated Distress Quantities*

Distress Description	Severity	Quantity	Density	Deduct
LONGITUDINAL/TRANSVERSE CRACKING	LOW	168 LF	0.69%	4.36
LONGITUDINAL/TRANSVERSE CRACKING	MEDIUM	10 LF	0.04%	4.00
RAVELING	HIGH	62 SF	0.25%	8.35
SWELL	MEDIUM	62 SF	0.25%	11.20
WEATHERING	LOW	24,538 SF	100.00%	5.96

* Multiple deduct values are scaled down from their algebraic sum to keep the model consistent with experimental data.

Percent of Deduct Values Based on Distress Mechanism

0.0 % Load 67.0 % Climate/Durability 33.0 % Other

JORDAN AIRPORT

Branch: 37-T TAXIWAY T-12

Length: 186 LF Width: 35 LF Area: 14,425 SF Last Const: 2003 Family: ACRML
 From: RUNWAY To: APRON Surface: AC

Inspections

Samples Surveyed: 3 **Total Samples:** 3 **Last Inspection Date:** 10/10/2018 **PCI:** 88

Sample # 1	Distress Description WEATHERING LONGITUDINAL/TRANSVERSE CRACKING	Severity L L	Quantity 3,675 SF 47 LF	Area: 3,675 SF
Sample # 2	Distress Description DEPRESSION WEATHERING LONGITUDINAL/TRANSVERSE CRACKING	Severity L L L	Quantity 2 SF 2,878 SF 92 LF	Area: 2,878 SF
Sample # 3	Distress Description LONGITUDINAL/TRANSVERSE CRACKING WEATHERING	Severity L L	Quantity 30 LF 4,370 SF	Area: 4,370 SF

Extrapolated Distress Quantities*

Distress Description	Severity	Quantity	Density	Deduct
DEPRESSION	LOW	3 SF	0.02%	0.30
LONGITUDINAL/TRANSVERSE CRACKING	LOW	223 LF	1.55%	6.23
WEATHERING	LOW	14,425 SF	100.00%	5.96

* Multiple deduct values are scaled down from their algebraic sum to keep the model consistent with experimental data.

Percent of Deduct Values Based on Distress Mechanism

0.0 % Load 98.0 % Climate/Durability 2.0 % Other

JORDAN AIRPORT (37)

FIFTEEN YEAR PROJECTIONS **ESTIMATED AVERAGE ANNUAL COST: \$49,378**

Plan Year: 2019		Estimated Cost:					\$155,852	PCI	
Section	Maintenance	Local	Global	Major<Crit	Major>Crit	Total	Before	After	
A-11	Preventive + Global MR	\$1,582	\$17,000	\$0	\$0	\$18,582	75	80	
R-1	Preventive + Global MR	\$14,139	\$109,649	\$0	\$0	\$123,788	72	77	
T-1	Preventive + Global MR	\$204	\$8,343	\$0	\$0	\$8,546	82	85	
T-12	Preventive + Global MR	\$32	\$4,904	\$0	\$0	\$4,936	88	90	
Plan Year: 2020		Estimated Cost:					\$10,293	PCI	
Section	Maintenance	Local	Global	Major<Crit	Major>Crit	Total	Before	After	
A-11	Preventive	\$906	\$0	\$0	\$0	\$906	78	78	
R-1	Preventive	\$9,234	\$0	\$0	\$0	\$9,234	75	75	
T-1	Preventive	\$144	\$0	\$0	\$0	\$144	84	84	
T-12	Preventive	\$9	\$0	\$0	\$0	\$9	89	89	
Plan Year: 2021		Estimated Cost:					\$12,891	PCI	
Section	Maintenance	Local	Global	Major<Crit	Major>Crit	Total	Before	After	
A-11	Preventive	\$1,218	\$0	\$0	\$0	\$1,218	76	76	
R-1	Preventive	\$11,481	\$0	\$0	\$0	\$11,481	74	74	
T-1	Preventive	\$172	\$0	\$0	\$0	\$172	83	83	
T-12	Preventive	\$20	\$0	\$0	\$0	\$20	89	89	
Plan Year: 2022		Estimated Cost:					\$15,486	PCI	
Section	Maintenance	Local	Global	Major<Crit	Major>Crit	Total	Before	After	
A-11	Preventive	\$1,530	\$0	\$0	\$0	\$1,530	75	75	
R-1	Preventive	\$13,725	\$0	\$0	\$0	\$13,725	72	72	
T-1	Preventive	\$200	\$0	\$0	\$0	\$200	82	82	
T-12	Preventive	\$31	\$0	\$0	\$0	\$31	88	88	
Plan Year: 2023		Estimated Cost:					\$18,081	PCI	
Section	Maintenance	Local	Global	Major<Crit	Major>Crit	Total	Before	After	
A-11	Preventive	\$1,842	\$0	\$0	\$0	\$1,842	73	73	
R-1	Preventive	\$15,969	\$0	\$0	\$0	\$15,969	70	70	
T-1	Preventive	\$228	\$0	\$0	\$0	\$228	81	81	
T-12	Preventive	\$42	\$0	\$0	\$0	\$42	87	87	
Plan Year: 2024		Estimated Cost:					\$161,111	PCI	
Section	Maintenance	Local	Global	Major<Crit	Major>Crit	Total	Before	After	
A-11	Preventive + Global MR	\$2,154	\$17,000	\$0	\$0	\$19,154	72	77	
R-1	Preventive + Global MR	\$18,720	\$109,649	\$0	\$0	\$128,369	68	74	
T-1	Preventive + Global MR	\$287	\$8,343	\$0	\$0	\$8,630	80	83	
T-12	Preventive + Global MR	\$53	\$4,904	\$0	\$0	\$4,958	86	89	
Plan Year: 2025		Estimated Cost:					\$15,033	PCI	
Section	Maintenance	Local	Global	Major<Crit	Major>Crit	Total	Before	After	
A-11	Preventive	\$1,480	\$0	\$0	\$0	\$1,480	75	75	
R-1	Preventive	\$13,327	\$0	\$0	\$0	\$13,327	72	72	
T-1	Preventive	\$197	\$0	\$0	\$0	\$197	82	82	
T-12	Preventive	\$30	\$0	\$0	\$0	\$30	88	88	
Plan Year: 2026		Estimated Cost:					\$17,629	PCI	
Section	Maintenance	Local	Global	Major<Crit	Major>Crit	Total	Before	After	
A-11	Preventive	\$1,792	\$0	\$0	\$0	\$1,792	74	74	
R-1	Preventive	\$15,571	\$0	\$0	\$0	\$15,571	70	71	
T-1	Preventive	\$225	\$0	\$0	\$0	\$225	81	81	
T-12	Preventive	\$41	\$0	\$0	\$0	\$41	87	87	
Plan Year: 2027		Estimated Cost:					\$20,651	PCI	
Section	Maintenance	Local	Global	Major<Crit	Major>Crit	Total	Before	After	
A-11	Preventive	\$2,104	\$0	\$0	\$0	\$2,104	72	72	
R-1	Preventive	\$18,219	\$0	\$0	\$0	\$18,219	69	69	
T-1	Preventive	\$275	\$0	\$0	\$0	\$275	80	80	
T-12	Preventive	\$52	\$0	\$0	\$0	\$52	86	86	
Plan Year: 2028		Estimated Cost:					\$23,896	PCI	
Section	Maintenance	Local	Global	Major<Crit	Major>Crit	Total	Before	After	
A-11	Preventive	\$2,416	\$0	\$0	\$0	\$2,416	70	71	
R-1	Preventive	\$21,030	\$0	\$0	\$0	\$21,030	67	67	
T-1	Preventive	\$387	\$0	\$0	\$0	\$387	79	79	
T-12	Preventive	\$63	\$0	\$0	\$0	\$63	86	86	

JORDAN AIRPORT (37)

FIFTEEN YEAR PROJECTIONS **ESTIMATED AVERAGE ANNUAL COST: \$49,378**

Plan Year: 2029						Estimated Cost:	\$167,088	PCI	
Section	Maintenance	Local	Global	Major<Crit	Major>Crit	Total	Before	After	
A-11	Preventive + Global MR	\$2,785	\$17,000	\$0	\$0	\$19,785	69	74	
R-1	Preventive + Global MR	\$23,834	\$109,649	\$0	\$0	\$133,483	65	71	
T-1	Preventive + Global MR	\$499	\$8,343	\$0	\$0	\$8,841	77	81	
T-12	Preventive + Global MR	\$75	\$4,904	\$0	\$0	\$4,979	85	87	
Plan Year: 2030						Estimated Cost:	\$20,069	PCI	
Section	Maintenance	Local	Global	Major<Crit	Major>Crit	Total	Before	After	
A-11	Preventive	\$2,052	\$0	\$0	\$0	\$2,052	72	72	
R-1	Preventive	\$17,704	\$0	\$0	\$0	\$17,704	69	69	
T-1	Preventive	\$261	\$0	\$0	\$0	\$261	80	80	
T-12	Preventive	\$51	\$0	\$0	\$0	\$51	86	86	
Plan Year: 2031						Estimated Cost:	\$23,311	PCI	
Section	Maintenance	Local	Global	Major<Crit	Major>Crit	Total	Before	After	
A-11	Preventive	\$2,364	\$0	\$0	\$0	\$2,364	71	71	
R-1	Preventive	\$20,511	\$0	\$0	\$0	\$20,511	67	67	
T-1	Preventive	\$373	\$0	\$0	\$0	\$373	79	79	
T-12	Preventive	\$63	\$0	\$0	\$0	\$63	86	86	
Plan Year: 2032						Estimated Cost:	\$26,579	PCI	
Section	Maintenance	Local	Global	Major<Crit	Major>Crit	Total	Before	After	
A-11	Preventive	\$2,720	\$0	\$0	\$0	\$2,720	69	69	
R-1	Preventive	\$23,301	\$0	\$0	\$0	\$23,301	66	66	
T-1	Preventive	\$485	\$0	\$0	\$0	\$485	78	78	
T-12	Preventive	\$74	\$0	\$0	\$0	\$74	85	85	
Plan Year: 2033						Estimated Cost:	\$29,900	PCI	
Section	Maintenance	Local	Global	Major<Crit	Major>Crit	Total	Before	After	
A-11	Preventive	\$3,113	\$0	\$0	\$0	\$3,113	68	68	
R-1	Preventive	\$26,105	\$0	\$0	\$0	\$26,105	64	64	
T-1	Preventive	\$597	\$0	\$0	\$0	\$597	76	76	
T-12	Preventive	\$85	\$0	\$0	\$0	\$85	84	84	