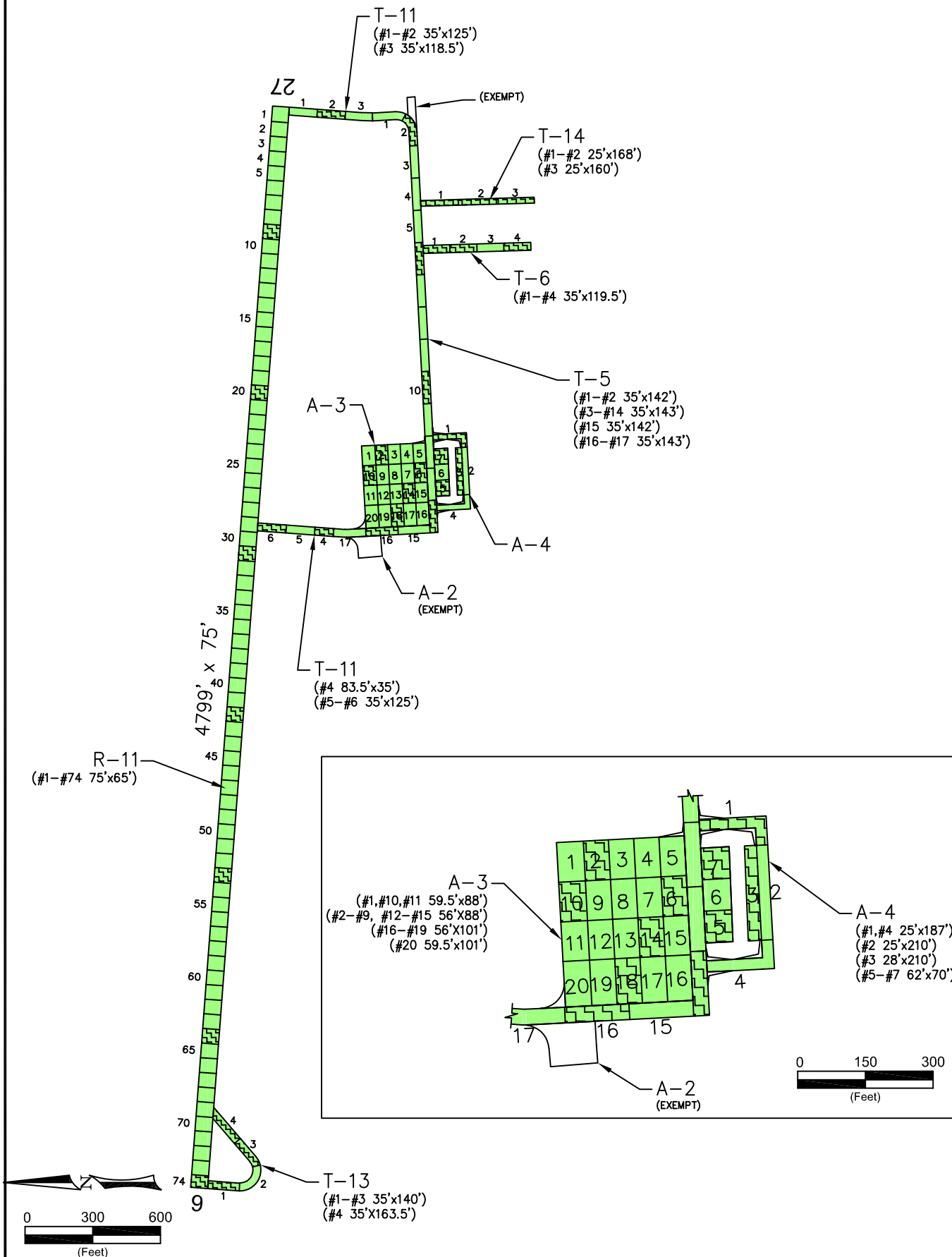


FORSYTH



PAVEMENT STRENGTH SURVEY/PAVEMENT CONDITION SURVEY

PAVE. IDENT.	SOIL CLASS	SUB GRADE CLASS	SUBBASE COURSE	BASE COURSE	SURFACE COURSE	OVERLAY	PAVEMENT STRENGTH			REMARKS
							MAX. GROSS LOAD (LBS)			
							SINGLE	DUAL	DUAL TAN.	
RUNWAYS										
R-11	E-7	F7, CBR=7	P-152	7" P-208	3" P-401	P-609 PAVE FAB. 4.5" P-401	12,500			1,2,3,4
TAXIWAYS										
T-5	E-7	F7, CBR=7	12" P-154 ON SEP&GRID FABRIC	6" P-208	4.5" P-401		12,500			5
T-6	E-7	F7, CBR=7	12" P-154 ON SEP&GRID FABRIC	6" P-208	4.5" P-401		12,500			5
T-11	E-7	F7, CBR=7	P-152	10" P-208	3" P-401	P-609 PAVE FAB. 4.5" P-401	12,500			1,2,3,5
T-13	E-7	F7	P-152	7" P-208	3" P-401	P-609 PAVE FAB. 4.5" P-401	12,500			1,2,3,4
T-14	E-7	F7, CBR=7		11" P-208	4.5" P-401	P-609 PAVE FAB. 2.5" P-401	12,500			1,2,3,5
APRONS										
A-3	E-7	F7, CBR=7	12" P-154 ON SEP&GRID FABRIC	6" P-208	4.5" P-401		12,500			5
A-4	E-7	F7, CBR=7	12" P-154 ON SEP&GRID FABRIC	6" P-208	4.5" P-401		12,500			5

REMARKS:

- R-1, T-1 AND A-1 ALL CONSTRUCTED OVER 12" COMPACTED SUBGRADE AT 95% COMPACTION; POOR DRAINAGE, FROST RUNWAY DESIGN BASED ON F-7 SUBGRADE. CBR=7 ASSUMED; P-402 USED IN DETERMINING MAXIMUM GROSS LOADS. AIP-001-1985, POROUS FRICTION COURSE OVERLAY OF ALL PAVEMENTS.
- AIP-002, 1994, RECONSTRUCT RUNWAY (R-1) AND TAXIWAY (T-1); REHABILITATE TAXIWAY (T-2) AND APRON (A-1); CONSTRUCT RUNWAY TURNAROUND (T-3).
 - AIP-003, 2001, CRACK SEAL, FOG SEAL, AND REMARK ALL PAVEMENTS.
 - AIP-007-2009, CRACK SEAL ALL PAVEMENTS.
 - AIP-010-2015, OVERLAY RUNWAY (R-11) AND TURNAROUND (T-13) AND TAXIWAYS (T-11).
 - AIP-011-2016, RECONSTRUCT APRON (A-3,A-4) AND TAXIWAYS (T-5, T-6, T-14),

LEGEND

- 2006 SURVEY AREA
- 2009 SURVEY AREA
- 2012 SURVEY AREA
- 2015 SURVEY AREA (NOT SURVEYED)
- 2018 SURVEY AREA
- MAINTAIN: PCI > 60
- TRANSITION: PCI 45 TO 60
- RECONSTRUCT: PCI < 45

DATE OF PAVEMENT STRENGTH SURVEY:	
EVALUATED BY:	
DATE OF MOST RECENT PAVEMENT CONDITION SURVEY:	OCT. 11, 2018
EVALUATED BY:	N. SCHROHT
LOCATION:	FORSYTH MONTANA

**MONTANA AVIATION SYSTEM PLAN
2018 UPDATE - PAVEMENT CONDITION INDEXES**

**TILLITT FIELD
(153)**

Date: _____ Prepared For: _____ Prepared By: _____

DECEMBER 2018

MONTANA **MDT** DEPARTMENT OF TRANSPORTATION **KLJ**

FORSYTH



A-3, Overview



A-3, Patch Valley Gutter



R-1, Overview



R-1, Patch Core



T-1, Overview



T-1, Ravel Grind



T-3, Overview



T-3, Surface



T-4, Overview



T-4, Crack

FORSYTH AIRPORT

Branch: 43A **APRON**

A-3

Length: 365 LF **Width:** 284 LF **Area:** 103,478 SF **Last Const:** 2016 **Family:** ACAM
From: APRON **To:** APRON **Surface:** AC

Inspections

Samples Surveyed: 5 **Total Samples:** 20 **Last Inspection Date:** 10/11/2018 **PCI:** **99**

Sample # 2	Distress Description PATCHING	Severity L	Quantity 9 SF	Area: 4,928 SF
Sample # 6	Distress Description DEPRESSION	Severity L	Quantity 1 SF	Area: 4,928 SF
Sample # 10	Distress Description NO DISTRESSES	Severity	Quantity	Area: 5,262 SF
Sample # 14	Distress Description PATCHING	Severity L	Quantity 1.77 SF	Area: 4,928 SF
Sample # 18	Distress Description PATCHING	Severity L	Quantity 7.26 SF	Area: 5,656 SF

Extrapolated Distress Quantities*

Distress Description	Severity	Quantity	Density	Deduct
DEPRESSION	LOW	4 SF	0.00%	0.30
PATCHING	LOW	73 SF	0.07%	2.00

* Multiple deduct values are scaled down from their algebraic sum to keep the model consistent with experimental data.

Percent of Deduct Values Based on Distress Mechanism

32.0 % Load 68.0 % Climate/Durability 0.0 % Other

FORSYTH AIRPORT

Branch: 43A **APRON**

A-4

Length: 1004 LF **Width:** 25 LF **Area:** 33,550 SF **Last Const:** 2016 **Family:** ACAM
From: T-5 **To:** HANGAR **Surface:** AC

Inspections

Samples Surveyed: 4 **Total Samples:** 7 **Last Inspection Date:** 10/11/2018 **PCI:** 91

Sample # 1	Distress Description DEPRESSION	Severity L	Quantity 14 SF	Area: 4,675 SF
Sample # 3	Distress Description NO DISTRESSES	Severity	Quantity	Area: 5,880 SF
Sample # 5	Distress Description RAVELING PATCHING	Severity H L	Quantity 15 SF 420.2 SF	Area: 4,340 SF
Sample # 7	Distress Description RAVELING PATCHING	Severity H L	Quantity 10 SF 420 SF	Area: 4,340 SF

Extrapolated Distress Quantities*

Distress Description	Severity	Quantity	Density	Deduct
DEPRESSION	LOW	24 SF	0.07%	0.30
PATCHING	LOW	1,465 SF	4.37%	9.13
RAVELING	HIGH	44 SF	0.13%	7.04

* Multiple deduct values are scaled down from their algebraic sum to keep the model consistent with experimental data.

Percent of Deduct Values Based on Distress Mechanism

0.0 % Load 98.0 % Climate/Durability 2.0 % Other

FORSYTH AIRPORT

Branch: 43R RUNWAY

R-11

Length: 4,799 LF **Width:** 75 LF **Area:** 359,925 SF **Last Const:** 2015 **Family:** ACRMU
From: RWY 26-8 STA 0+00 **To:** RWY 26-8 STA 47+99 **Surface:** AAC

Inspections

Samples Surveyed: 7 **Total Samples:** 74 **Last Inspection Date:** 10/11/2018 **PCI:** 100

Sample #	Distress Description	Severity	Quantity	Area:
9	NO DISTRESSES			4,875 SF
20	NO DISTRESSES			4,875 SF
31	NO DISTRESSES			4,875 SF
42	NO DISTRESSES			4,875 SF
53	NO DISTRESSES			4,875 SF
64	PATCHING	L	0.09 SF	4,875 SF
74	NO DISTRESSES			4,800 SF

Extrapolated Distress Quantities*

Distress Description	Severity	Quantity	Density	Deduct
PATCHING	LOW	1 SF	0.00%	2.00

* Multiple deduct values are scaled down from their algebraic sum to keep the model consistent with experimental data.

Percent of Deduct Values Based on Distress Mechanism

0.0 % Load 100.0 % Climate/Durability 0.0 % Other

FORSYTH AIRPORT

Branch: 43T TAXIWAY

T-6

Length: 478 LF Width: 35 LF Area: 16,730 SF Last Const: 2016 Family: ACRMU
 From: T-5 To: HANGARS Surface: AC

Inspections

Sample Surveyed: 3 Total Samples: 4 Last Inspection Date: 10/11/2018 **PCI: 95**

Sample # 1 Area: 4,182 SF

Distress Description	Severity	Quantity
PATCHING	L	0.2 SF
RAVELING	H	1 SF

Sample # 2 Area: 4,182 SF

Distress Description	Severity	Quantity
PATCHING	L	0.2 SF

Sample # 4 Area: 4,182 SF

Distress Description	Severity	Quantity
RAVELING	H	1 SF
DEPRESSION	L	6 SF

Extrapolated Distress Quantities*

Distress Description	Severity	Quantity	Density	Deduct
DEPRESSION	LOW	8 SF	0.05%	0.30
PATCHING	LOW	1 SF	0.00%	2.00
RAVELING	HIGH	3 SF	0.02%	6.00

* Multiple deduct values are scaled down from their algebraic sum to keep the model consistent with experimental data.

Percent of Deduct Values Based on Distress Mechanism

0.0 % Load 96.0 % Climate/Durability 4.0 % Other

FORSYTH AIRPORT

Branch: 43T TAXIWAY **T-11**

Length: 702 LF **Width:** 35 LF **Area:** 24,570 SF **Last Const:** 2015 **Family:** ACRMU
From: R-11 **To:** T-5 **Surface:** AAC

Inspections

Samples Surveyed: 3 **Total Samples:** 5 **Last Inspection Date:** 10/11/2018 **PCI:** 97

Sample # 2 **Area:** 4,375 SF

Distress Description	Severity	Quantity
LONGITUDINAL/TRANSVERSE CRACKING	L	3 LF
PATCHING	L	0.2 SF

Sample # 4 **Area:** 2,922 SF

Distress Description	Severity	Quantity
LONGITUDINAL/TRANSVERSE CRACKING	L	18 LF

Sample # 6 **Area:** 4,375 SF

Distress Description	Severity	Quantity
NO DISTRESSES		

Extrapolated Distress Quantities*

Distress Description	Severity	Quantity	Density	Deduct
LONGITUDINAL/TRANSVERSE CRACKING	LOW	44 LF	0.18%	2.96
PATCHING	LOW	0 SF	0.00%	2.00

* Multiple deduct values are scaled down from their algebraic sum to keep the model consistent with experimental data.

Percent of Deduct Values Based on Distress Mechanism

0.0 % Load 100.0 % Climate/Durability 0.0 % Other

FORSYTH AIRPORT

Branch: 43T TAXIWAY

T-13

Length: 585 LF Width: 35 LF Area: 20,458 SF Last Const: 2015 Family: ACRMU
 From: R-1 To: R-1 Surface: AAC

Inspections

Samples Surveyed: 3 **Total Samples:** 4 **Last Inspection Date:** 10/11/2018 **PCI:** 98

Sample # 1	Distress Description NO DISTRESSES	Severity	Quantity	Area: 4,900 SF
Sample # 3	Distress Description NO DISTRESSES	Severity	Quantity	Area: 4,900 SF
Sample # 4	Distress Description RAVELING	Severity H	Quantity 1 SF	Area: 5,752 SF

Extrapolated Distress Quantities*

Distress Description	Severity	Quantity	Density	Deduct
RAVELING	HIGH	1 SF	0.01%	6.00

* Multiple deduct values are scaled down from their algebraic sum to keep the model consistent with experimental data.

Percent of Deduct Values Based on Distress Mechanism

0.0 % Load 100.0 % Climate/Durability 0.0 % Other

FORSYTH AIRPORT

Branch: 43T TAXIWAY

T-14

Length: 496 LF **Width:** 25 LF **Area:** 12,400 SF **Last Const:** 2016 **Family:** ACRMU
From: T-5 **To:** HANGARS **Surface:** AAC

Inspections

Samples Surveyed: 3 **Total Samples:** 3 **Last Inspection Date:** 10/11/2018 **PCI:** 96

Sample # 1	Distress Description BLEEDING	Severity NA	Quantity 1 SF	Area: 4,200 SF
Sample # 2	Distress Description RAVELING	Severity H	Quantity 1 SF	Area: 4,200 SF
Sample # 3	Distress Description PATCHING BLEEDING LONGITUDINAL/TRANSVERSE CRACKING	Severity L NA L	Quantity 0.2 SF 1 SF 12 LF	Area: 4,000 SF

Extrapolated Distress Quantities*

Distress Description	Severity	Quantity	Density	Deduct
BLEEDING	N/A	2 SF	0.02%	0.00
LONGITUDINAL/TRANSVERSE CRACKING	LOW	12 LF	0.10%	2.50
PATCHING	LOW	0 SF	0.00%	2.00
RAVELING	HIGH	1 SF	0.01%	6.00

* Multiple deduct values are scaled down from their algebraic sum to keep the model consistent with experimental data.

Percent of Deduct Values Based on Distress Mechanism

0.0 % Load 100.0 % Climate/Durability 0.0 % Other

FORSYTH AIRPORT (43)

FIFTEEN YEAR PROJECTIONS							ESTIMATED AVERAGE ANNUAL COST:		\$89,062	
Plan Year: 2019							Estimated Cost:		\$0	
Section	Maintenance	Local	Global	Major<Crit	Major>Crit	Total	PCI		Before	After
A-3	None	\$0	\$0	\$0	\$0	\$0	98	98		
A-4	None	\$0	\$0	\$0	\$0	\$0	90	90		
R-11	None	\$0	\$0	\$0	\$0	\$0	99	99		
T-11	None	\$0	\$0	\$0	\$0	\$0	96	96		
T-13	None	\$0	\$0	\$0	\$0	\$0	97	97		
T-14	None	\$0	\$0	\$0	\$0	\$0	95	95		
T-5	None	\$0	\$0	\$0	\$0	\$0	96	96		
T-6	None	\$0	\$0	\$0	\$0	\$0	94	94		
Plan Year: 2020							Estimated Cost:		\$15,401	
Section	Maintenance	Local	Global	Major<Crit	Major>Crit	Total	PCI		Before	After
A-3	None	\$0	\$0	\$0	\$0	\$0	95	95		
A-4	Preventive	\$92	\$0	\$0	\$0	\$92	87	88		
R-11	None	\$0	\$0	\$0	\$0	\$0	96	96		
T-11	Global MR	\$0	\$8,354	\$0	\$0	\$8,354	93	100		
T-13	Global MR	\$0	\$6,955	\$0	\$0	\$6,955	94	100		
T-14	None	\$0	\$0	\$0	\$0	\$0	92	92		
T-5	None	\$0	\$0	\$0	\$0	\$0	93	93		
T-6	None	\$0	\$0	\$0	\$0	\$0	91	91		
Plan Year: 2021							Estimated Cost:		\$50,373	
Section	Maintenance	Local	Global	Major<Crit	Major>Crit	Total	PCI		Before	After
A-3	None	\$0	\$0	\$0	\$0	\$0	92	92		
A-4	Preventive + Global MR	\$184	\$11,407	\$0	\$0	\$11,590	85	94		
R-11	None	\$0	\$0	\$0	\$0	\$0	93	93		
T-11	None	\$0	\$0	\$0	\$0	\$0	97	97		
T-13	None	\$0	\$0	\$0	\$0	\$0	97	97		
T-14	Preventive + Global MR	\$9	\$4,216	\$0	\$0	\$4,225	89	99		
T-5	Global MR	\$0	\$28,840	\$0	\$0	\$28,840	90	99		
T-6	Preventive + Global MR	\$29	\$5,688	\$0	\$0	\$5,717	88	98		
Plan Year: 2022							Estimated Cost:		\$77	
Section	Maintenance	Local	Global	Major<Crit	Major>Crit	Total	PCI		Before	After
A-3	Preventive	\$77	\$0	\$0	\$0	\$77	89	90		
A-4	None	\$0	\$0	\$0	\$0	\$0	91	91		
R-11	None	\$0	\$0	\$0	\$0	\$0	90	90		
T-11	None	\$0	\$0	\$0	\$0	\$0	94	94		
T-13	None	\$0	\$0	\$0	\$0	\$0	94	94		
T-14	None	\$0	\$0	\$0	\$0	\$0	96	96		
T-5	None	\$0	\$0	\$0	\$0	\$0	96	96		
T-6	None	\$0	\$0	\$0	\$0	\$0	95	95		
Plan Year: 2023							Estimated Cost:		\$1,419	
Section	Maintenance	Local	Global	Major<Crit	Major>Crit	Total	PCI		Before	After
A-3	Preventive	\$359	\$0	\$0	\$0	\$359	87	87		
A-4	Preventive	\$74	\$0	\$0	\$0	\$74	88	88		
R-11	Preventive	\$986	\$0	\$0	\$0	\$986	87	87		
T-11	None	\$0	\$0	\$0	\$0	\$0	91	91		
T-13	None	\$0	\$0	\$0	\$0	\$0	91	91		
T-14	None	\$0	\$0	\$0	\$0	\$0	93	93		
T-5	None	\$0	\$0	\$0	\$0	\$0	93	93		
T-6	None	\$0	\$0	\$0	\$0	\$0	92	92		
Plan Year: 2024							Estimated Cost:		\$2,986	
Section	Maintenance	Local	Global	Major<Crit	Major>Crit	Total	PCI		Before	After
A-3	Preventive	\$641	\$0	\$0	\$0	\$641	84	84		
A-4	Preventive	\$165	\$0	\$0	\$0	\$165	85	85		
R-11	Preventive	\$2,060	\$0	\$0	\$0	\$2,060	84	84		
T-11	Preventive	\$49	\$0	\$0	\$0	\$49	88	88		
T-13	Preventive	\$41	\$0	\$0	\$0	\$41	88	88		
T-14	Preventive	\$6	\$0	\$0	\$0	\$6	90	90		
T-5	None	\$0	\$0	\$0	\$0	\$0	90	90		
T-6	Preventive	\$25	\$0	\$0	\$0	\$25	89	89		
Plan Year: 2025							Estimated Cost:		\$794,025	
Section	Maintenance	Local	Global	Major<Crit	Major>Crit	Total	PCI		Before	After
A-3	Preventive	\$924	\$0	\$0	\$0	\$924	81	81		
A-4	Preventive	\$257	\$0	\$0	\$0	\$257	82	83		
R-11	Preventive + Global MR	\$3,133	\$773,839	\$0	\$0	\$776,972	81	96		
T-11	Preventive + Global MR	\$120	\$8,354	\$0	\$0	\$8,474	85	94		
T-13	Preventive + Global MR	\$101	\$6,955	\$0	\$0	\$7,056	85	94		
T-14	Preventive	\$40	\$0	\$0	\$0	\$40	87	87		
T-5	Preventive	\$232	\$0	\$0	\$0	\$232	87	88		
T-6	Preventive	\$70	\$0	\$0	\$0	\$70	86	86		

FORSYTH AIRPORT (43)

FIFTEEN YEAR PROJECTIONS							ESTIMATED AVERAGE ANNUAL COST:		\$89,062		
Plan Year: 2026							Estimated Cost:		\$275,391	PCI	
Section	Maintenance	Local	Global	Major<Crit	Major>Crit	Total	Before	After			
A-3	Preventive + Global MR	\$1,722	\$222,477	\$0	\$0	\$224,198	78	94			
A-4	Preventive + Global MR	\$388	\$11,407	\$0	\$0	\$11,795	80	89			
R-11	None	\$0	\$0	\$0	\$0	\$0	93	93			
T-11	None	\$0	\$0	\$0	\$0	\$0	91	91			
T-13	None	\$0	\$0	\$0	\$0	\$0	91	91			
T-14	Preventive + Global MR	\$73	\$4,216	\$0	\$0	\$4,289	84	93			
T-5	Preventive + Global MR	\$464	\$28,840	\$0	\$0	\$29,304	85	94			
T-6	Preventive + Global MR	\$116	\$5,688	\$0	\$0	\$5,804	83	92			
Plan Year: 2027							Estimated Cost:		\$230	PCI	
Section	Maintenance	Local	Global	Major<Crit	Major>Crit	Total	Before	After			
A-3	None	\$0	\$0	\$0	\$0	\$0	91	91			
A-4	Preventive	\$138	\$0	\$0	\$0	\$138	86	86			
R-11	None	\$0	\$0	\$0	\$0	\$0	90	90			
T-11	Preventive	\$43	\$0	\$0	\$0	\$43	88	88			
T-13	Preventive	\$38	\$0	\$0	\$0	\$38	88	88			
T-14	None	\$0	\$0	\$0	\$0	\$0	90	90			
T-5	None	\$0	\$0	\$0	\$0	\$0	91	91			
T-6	Preventive	\$11	\$0	\$0	\$0	\$11	89	90			
Plan Year: 2028							Estimated Cost:		\$1,925	PCI	
Section	Maintenance	Local	Global	Major<Crit	Major>Crit	Total	Before	After			
A-3	Preventive	\$246	\$0	\$0	\$0	\$246	88	88			
A-4	Preventive	\$229	\$0	\$0	\$0	\$229	83	83			
R-11	Preventive	\$963	\$0	\$0	\$0	\$963	87	87			
T-11	Preventive	\$114	\$0	\$0	\$0	\$114	85	85			
T-13	Preventive	\$97	\$0	\$0	\$0	\$97	85	85			
T-14	Preventive	\$33	\$0	\$0	\$0	\$33	87	88			
T-5	Preventive	\$186	\$0	\$0	\$0	\$186	88	88			
T-6	Preventive	\$57	\$0	\$0	\$0	\$57	87	87			
Plan Year: 2029							Estimated Cost:		\$3,819	PCI	
Section	Maintenance	Local	Global	Major<Crit	Major>Crit	Total	Before	After			
A-3	Preventive	\$530	\$0	\$0	\$0	\$530	85	85			
A-4	Preventive	\$321	\$0	\$0	\$0	\$321	80	81			
R-11	Preventive	\$2,040	\$0	\$0	\$0	\$2,040	84	84			
T-11	Preventive	\$185	\$0	\$0	\$0	\$185	82	83			
T-13	Preventive	\$157	\$0	\$0	\$0	\$157	82	82			
T-14	Preventive	\$67	\$0	\$0	\$0	\$67	85	85			
T-5	Preventive	\$417	\$0	\$0	\$0	\$417	85	85			
T-6	Preventive	\$102	\$0	\$0	\$0	\$102	84	84			
Plan Year: 2030							Estimated Cost:		\$21,316	PCI	
Section	Maintenance	Local	Global	Major<Crit	Major>Crit	Total	Before	After			
A-3	Preventive	\$811	\$0	\$0	\$0	\$811	82	82			
A-4	Preventive	\$644	\$0	\$0	\$0	\$644	78	78			
R-11	Preventive	\$3,113	\$0	\$0	\$0	\$3,113	81	81			
T-11	Preventive + Global MR	\$288	\$8,354	\$0	\$0	\$8,642	80	89			
T-13	Preventive + Global MR	\$254	\$6,955	\$0	\$0	\$7,209	79	88			
T-14	Preventive	\$101	\$0	\$0	\$0	\$101	82	82			
T-5	Preventive	\$649	\$0	\$0	\$0	\$649	82	83			
T-6	Preventive	\$148	\$0	\$0	\$0	\$148	81	81			
Plan Year: 2031							Estimated Cost:		\$59,989	PCI	
Section	Maintenance	Local	Global	Major<Crit	Major>Crit	Total	Before	After			
A-3	Preventive	\$1,271	\$0	\$0	\$0	\$1,271	79	80			
A-4	Preventive + Global MR	\$1,009	\$11,407	\$0	\$0	\$12,416	75	84			
R-11	Preventive	\$5,945	\$0	\$0	\$0	\$5,945	78	78			
T-11	Preventive	\$106	\$0	\$0	\$0	\$106	86	86			
T-13	Preventive	\$92	\$0	\$0	\$0	\$92	86	86			
T-14	Preventive + Global MR	\$166	\$4,216	\$0	\$0	\$4,382	79	88			
T-5	Preventive + Global MR	\$977	\$28,840	\$0	\$0	\$29,817	80	89			
T-6	Preventive + Global MR	\$272	\$5,688	\$0	\$0	\$5,960	78	88			
Plan Year: 2032							Estimated Cost:		\$13,764	PCI	
Section	Maintenance	Local	Global	Major<Crit	Major>Crit	Total	Before	After			
A-3	Preventive	\$2,400	\$0	\$0	\$0	\$2,400	77	77			
A-4	Preventive	\$293	\$0	\$0	\$0	\$293	81	82			
R-11	Preventive	\$10,249	\$0	\$0	\$0	\$10,249	75	75			
T-11	Preventive	\$177	\$0	\$0	\$0	\$177	83	83			
T-13	Preventive	\$152	\$0	\$0	\$0	\$152	83	83			
T-14	Preventive	\$57	\$0	\$0	\$0	\$57	85	86			
T-5	Preventive	\$348	\$0	\$0	\$0	\$348	86	86			
T-6	Preventive	\$88	\$0	\$0	\$0	\$88	85	85			

FORSYTH AIRPORT (43)

FIFTEEN YEAR PROJECTIONS **ESTIMATED AVERAGE ANNUAL COST: \$89,062**

Plan Year: 2033

Section	Maintenance	Local	Global	Major<Crit	Major>Crit	Estimated Cost: Total	PCI	
							Before	After
A-3	Preventive	\$3,531	\$0	\$0	\$0	\$3,531	74	74
A-4	Preventive	\$535	\$0	\$0	\$0	\$535	79	79
R-11	Preventive	\$14,556	\$0	\$0	\$0	\$14,556	72	72
T-11	Preventive	\$253	\$0	\$0	\$0	\$253	80	80
T-13	Preventive	\$232	\$0	\$0	\$0	\$232	80	80
T-14	Preventive	\$90	\$0	\$0	\$0	\$90	83	83
T-5	Preventive	\$580	\$0	\$0	\$0	\$580	83	83
T-6	Preventive	\$134	\$0	\$0	\$0	\$134	82	82