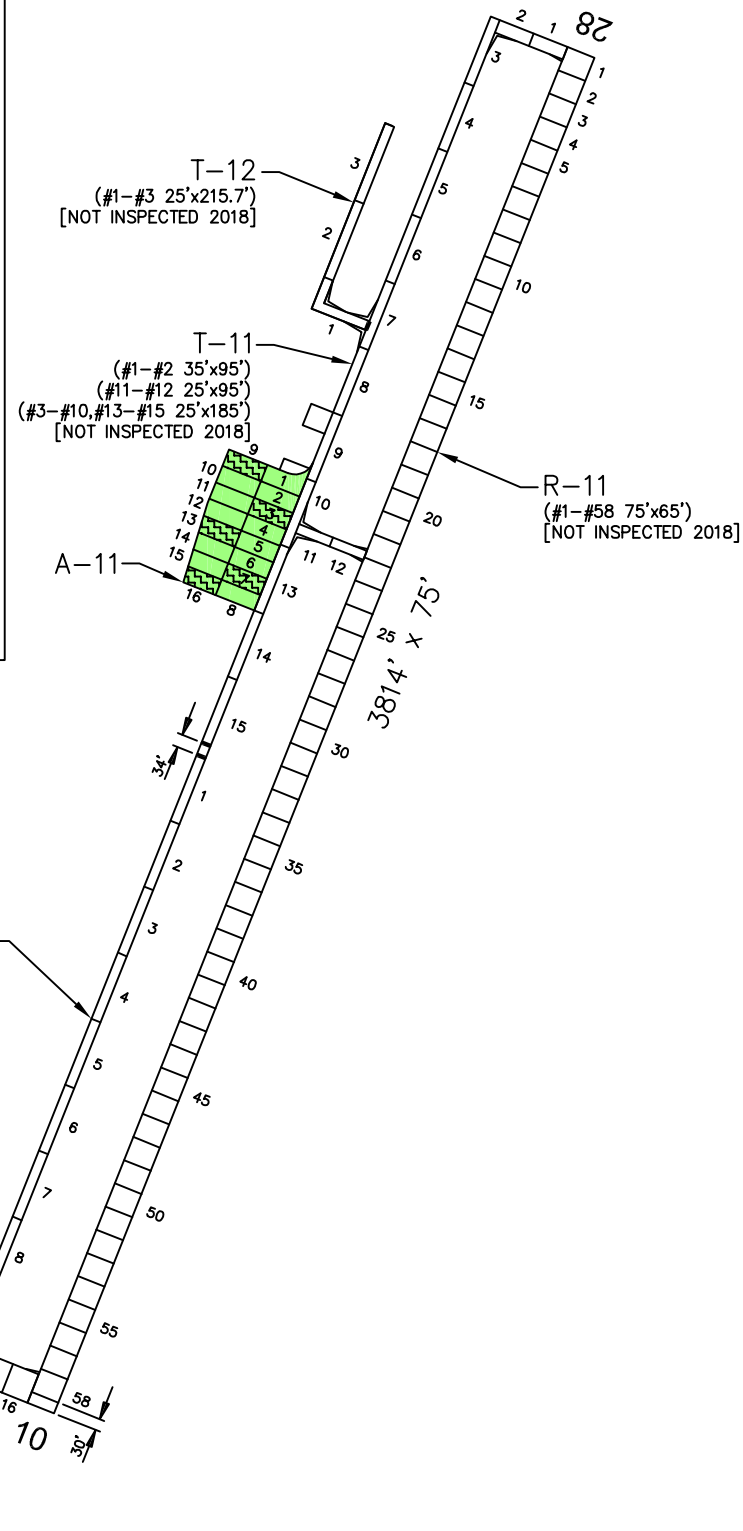
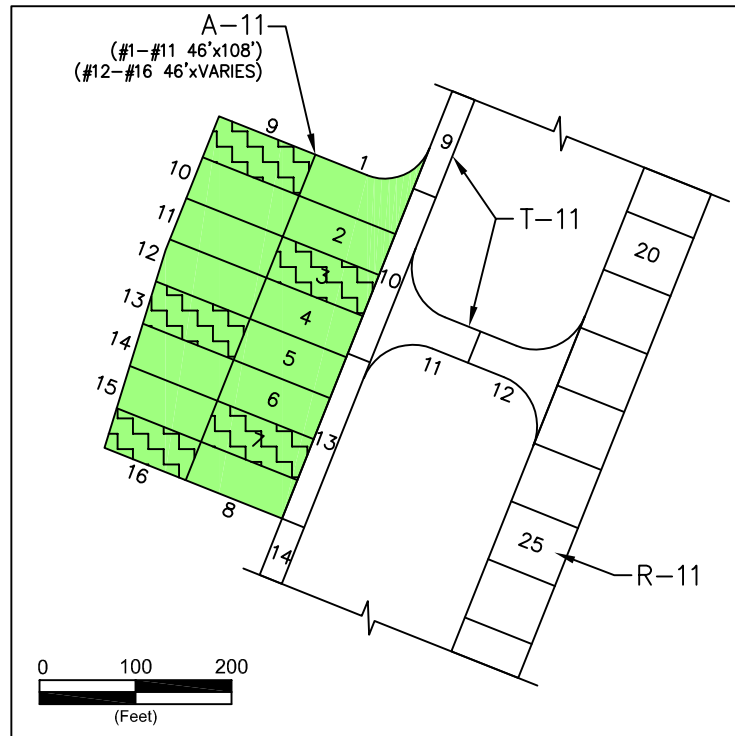


COLUMBUS



PAVEMENT STRENGTH SURVEY/PAVEMENT CONDITION SURVEY

PAVE. IDENT.	SOIL CLASS	SUB GRADE CLASS	SUBBASE COURSE	BASE COURSE	SURFACE COURSE	OVERLAY	PAVEMENT STRENGTH			REMARKS
							MAX. GROSS LOAD (LBS)			
							SINGLE	DUAL	DUAL TAN.	
RUNWAYS										
R-11	CBR=1.5	CH(A-7-6)	6" SUBPREP. FABRIC, 13" P-208	0-2" P-208	3" P-401		12,500			1,3,4,5
TAXIWAYS										
T-11	CBR=1.5	CH(A-7-6)	6" SUBPREP. FABRIC, 13" P-208	0-2" P-208	3" P-401		12,500			1,3,4,5
T-12	CBR=1.5	CH(A-7-6)	6" COMP. P-152 FABRIC	0-2" P-208	3" P-401		12,500			1,3,4,5
T-13	CBR=3	CH(A-7-6)	6" SUBPREP. FABRIC, 13" P-208	0-2" P-208	3" P-401		12,500			2,3,4,5
APRONS										
A-11	CBR=1.5	CH(A-7-6)	6" SUBPREP. FABRIC, 13" P-208	0-2" P-208	3" P-401		12,500			1,3,4,5

REMARKS:

1. AIP-002-1998, ALL NEW CONSTRUCTION.
2. AIP-003-2002, CONSTRUCT PARALLEL TAXIWAY A (T-13).
3. AIP-004-2004, CRACK SEAL, FOG SEAL, AND REMARK ALL PAVEMENTS.
4. AIP-008-2010, CRACK SEAL, FOG SEAL, AND REMARK ALL PAVEMENTS.
5. AIP-013-2017, REHABILITATE RUNWAY, TAXIWAY AND APRON; RECONSTRUCT TAXIWAY

LEGEND

- 2006 SURVEY AREA
- 2009 SURVEY AREA
- 2012 SURVEY AREA
- 2015 SURVEY AREA
- 2018 SURVEY AREA
- MAINTAIN: PCI > 60
- TRANSITION: PCI 45 TO 60
- RECONSTRUCT: PCI < 45

DATE OF PAVEMENT STRENGTH SURVEY:	
EVALUATED BY:	
DATE OF MOST RECENT PAVEMENT CONDITION SURVEY:	NOV. 19, 2018
EVALUATED BY:	N. SCHROHT
LOCATION:	COLUMBUS MONTANA

**MONTANA AVIATION SYSTEM PLAN
2018 UPDATE - PAVEMENT CONDITION INDEXES**

**WOLTERMANN MEMORIAL AIRPORT
(6S3)**

Date: Prepared For:

DECEMBER 2018

Prepared By:

COLUMBUS



A-1, Overview



A-1, Raveling, Surface Grind



A-1, Depression



A-1, Patch-Tie Down

COLUMBUS AIRPORT

Branch: 59A **APRON**

A-11

Length: 368 LF **Width:** 216 LF **Area:** 79,488 SF **Last Const:** 2018 **Family:** ACAM
From: ENTIRE APRON **To:** **Surface:** AC

Inspections

Samples Surveyed: 5 **Total Samples:** 16 **Last Inspection Date:** 11/19/2018 **PCI:** 98

Sample # 3	Distress Description PATCHING	Severity L	Quantity 2.36 SF	Area: 4,968 SF
Sample # 7	Distress Description PATCHING	Severity L	Quantity 2.36 SF	Area: 4,968 SF
Sample # 9	Distress Description DEPRESSION	Severity L	Quantity 27 SF	Area: 4,968 SF
Sample # 13	Distress Description PATCHING	Severity L	Quantity 0.09 SF	Area: 4,761 SF
Sample # 16	Distress Description NO DISTRESSES	Severity	Quantity	Area: 3,989 SF

Extrapolated Distress Quantities*

Distress Description	Severity	Quantity	Density	Deduct
DEPRESSION	LOW	91 SF	0.11%	0.30
PATCHING	LOW	16 SF	0.02%	2.00

* Multiple deduct values are scaled down from their algebraic sum to keep the model consistent with experimental data.

Percent of Deduct Values Based on Distress Mechanism

0.0 % Load 87.0 % Climate/Durability 13.0 % Other

COLUMBUS AIRPORT (59)

FIFTEEN YEAR PROJECTIONS							ESTIMATED AVERAGE ANNUAL COST: \$13,208		
Plan Year: 2019							Estimated Cost:	\$0	
Section	Maintenance	Local	Global	Major<Crit	Major>Crit	Total		PCI	
								Before	After
A-11	None	\$0	\$0	\$0	\$0	\$0		98	98
Plan Year: 2020							Estimated Cost:	\$0	
Section	Maintenance	Local	Global	Major<Crit	Major>Crit	Total		PCI	
								Before	After
A-11	None	\$0	\$0	\$0	\$0	\$0		95	95
Plan Year: 2021							Estimated Cost:	\$0	
Section	Maintenance	Local	Global	Major<Crit	Major>Crit	Total		PCI	
								Before	After
A-11	None	\$0	\$0	\$0	\$0	\$0		92	92
Plan Year: 2022							Estimated Cost:	\$113	
Section	Maintenance	Local	Global	Major<Crit	Major>Crit	Total		PCI	
								Before	After
A-11	Preventive	\$113	\$0	\$0	\$0	\$113		89	89
Plan Year: 2023							Estimated Cost:	\$329	
Section	Maintenance	Local	Global	Major<Crit	Major>Crit	Total		PCI	
								Before	After
A-11	Preventive	\$329	\$0	\$0	\$0	\$329		86	86
Plan Year: 2024							Estimated Cost:	\$546	
Section	Maintenance	Local	Global	Major<Crit	Major>Crit	Total		PCI	
								Before	After
A-11	Preventive	\$546	\$0	\$0	\$0	\$546		83	83
Plan Year: 2025							Estimated Cost:	\$764	
Section	Maintenance	Local	Global	Major<Crit	Major>Crit	Total		PCI	
								Before	After
A-11	Preventive	\$764	\$0	\$0	\$0	\$764		80	81
Plan Year: 2026							Estimated Cost:	\$1,539	
Section	Maintenance	Local	Global	Major<Crit	Major>Crit	Total		PCI	
								Before	After
A-11	Preventive	\$1,539	\$0	\$0	\$0	\$1,539		78	78
Plan Year: 2027							Estimated Cost:	\$2,404	
Section	Maintenance	Local	Global	Major<Crit	Major>Crit	Total		PCI	
								Before	After
A-11	Preventive	\$2,404	\$0	\$0	\$0	\$2,404		75	75
Plan Year: 2028							Estimated Cost:	\$174,171	
Section	Maintenance	Local	Global	Major<Crit	Major>Crit	Total		PCI	
								Before	After
A-11	Preventive + Global MR	\$3,271	\$170,899	\$0	\$0	\$174,171		72	87
Plan Year: 2029							Estimated Cost:	\$439	
Section	Maintenance	Local	Global	Major<Crit	Major>Crit	Total		PCI	
								Before	After
A-11	Preventive	\$439	\$0	\$0	\$0	\$439		84	85
Plan Year: 2030							Estimated Cost:	\$656	
Section	Maintenance	Local	Global	Major<Crit	Major>Crit	Total		PCI	
								Before	After
A-11	Preventive	\$656	\$0	\$0	\$0	\$656		82	82
Plan Year: 2031							Estimated Cost:	\$1,106	
Section	Maintenance	Local	Global	Major<Crit	Major>Crit	Total		PCI	
								Before	After
A-11	Preventive	\$1,106	\$0	\$0	\$0	\$1,106		79	79
Plan Year: 2032							Estimated Cost:	\$1,974	
Section	Maintenance	Local	Global	Major<Crit	Major>Crit	Total		PCI	
								Before	After
A-11	Preventive	\$1,974	\$0	\$0	\$0	\$1,974		76	77
Plan Year: 2033							Estimated Cost:	\$2,842	
Section	Maintenance	Local	Global	Major<Crit	Major>Crit	Total		PCI	
								Before	After
A-11	Preventive	\$2,842	\$0	\$0	\$0	\$2,842		74	74