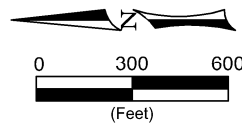
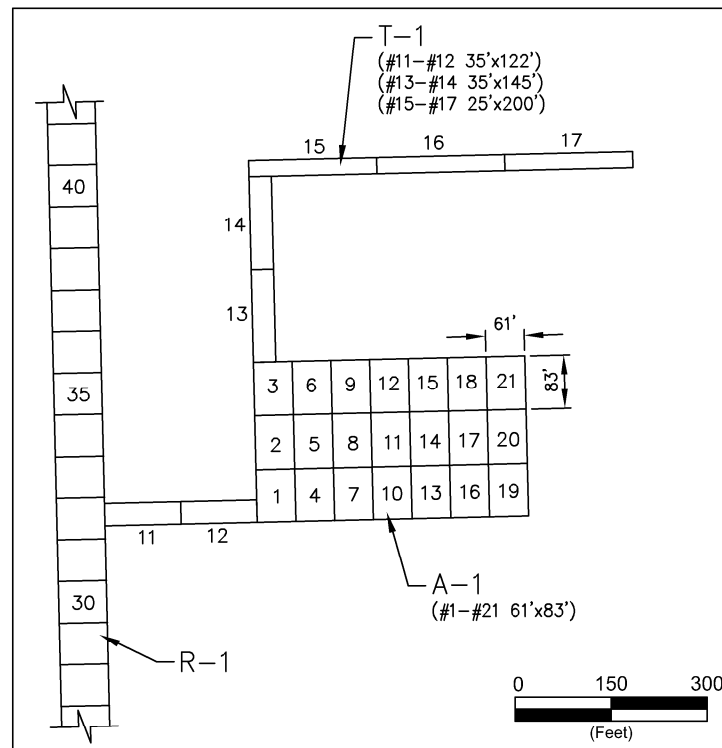
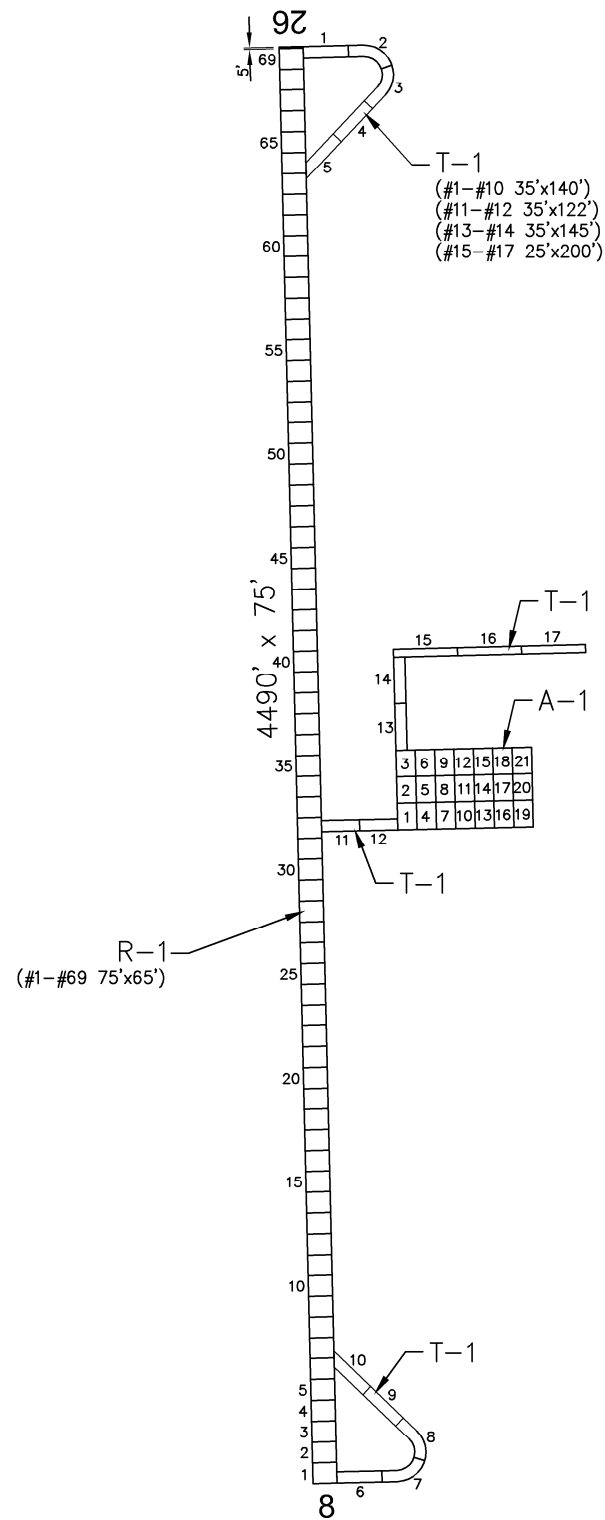


HARDIN



PAVEMENT STRENGTH SURVEY/PAVEMENT CONDITION SURVEY

PAVE. IDENT.	SOIL CLASS	SUB GRADE CLASS	SUBBASE COURSE	BASE COURSE	SURFACE COURSE	OVERLAY	PAVEMENT STRENGTH			REMARKS
							MAX. GROSS LOAD (LBS)			
							SINGLE	DUAL	DUAL TAN.	
RUNWAYS										
R-1	FG-38.4	CBR=1.8	36" P-154	5" P-208	3" P-401		18,500			1
TAXIWAYS										
T-1	FG-38.4	CBR=1.8	36" P-154	5" P-208	3" P-401		18,500			1
APRONS										
A-1	FG-38.4	CBR=1.8	36" P-154	5" P-208	3" P-401		18,500			1

REMARKS:

- AIP-007-2013, NEW AIRPORT CONSTRUCTION (PAVED IN 2014).

LEGEND

- 2003 SURVEY AREA (N/A)
- 2006 SURVEY AREA (N/A)
- 2009 SURVEY AREA (N/A)
- 2012 SURVEY AREA (N/A)
- 2015 SURVEY AREA (NOT SURVEYED)
- MAINTAIN: PCI > 60
- TRANSITION: PCI 45 TO 60
- RECONSTRUCT: PCI < 45

DATE OF PAVEMENT STRENGTH SURVEY:

EVALUATED BY:

DATE OF MOST RECENT PAVEMENT CONDITION SURVEY:

EVALUATED BY:

LOCATION:

HARDIN MONTANA

**MONTANA AVIATION SYSTEM PLAN
2015 UPDATE - PAVEMENT CONDITION INDEXES**

**BIG HORN COUNTY AIRPORT
(00U)**

Date: DECEMBER 2015

Prepared For:

MONTANA
MDT
DEPARTMENT OF TRANSPORTATION

Prepared By:

RPA
Robert Peccia & Associates, Inc.

HARDIN