

Glendive, Montana

**Dawson
Community
Airport**



2016 Economic Impact Study for
MONTANA AIRPORTS



Montana's Airports Support Our State

Montana's airports play an integral role in our transportation system by providing access to destinations within the state, throughout the country, and across the globe. Airports also offer significant economic benefits to our communities by supporting jobs; generating payroll; paying taxes; and triggering spending at local, regional, and state levels.

The importance of airports goes beyond transportation and economics. Airports offer services and other attributes of value that cannot always be easily measured in dollars and cents. Residents and visitors use airports for leisure and business travel, and airports serve as the base for a wide range of critical activities such as wildland firefighting, search and rescue operations, and training for future aviators. Airports are the starting point for aircraft that conduct utility inspections, provide medical evacuation services, and transport staff and executives for business activity.

To better understand the value of Montana's airports from the perspective of both economics and community benefits, the Montana Department of Transportation (MDT) conducted a comprehensive study of the state's aviation facilities. The study analyzed the contributions of the Montana airport system, including aviation-related and non-aviation-related businesses, visitor spending, capital expenditures on construction, and additional spin-off (or "multiplier") effects. The study also examined specific activities and uses at each airport to identify how these facilities support Montana's residents and visitors.

Methodology

This study expresses the economic benefits of Montana's airports in terms of jobs, payroll, and total annual economic impact derived from the activities that occur at aviation facilities. Direct impacts include those from on-airport businesses, construction-related activities, and spending from visitors who travel through an airport. Airports host on-airport businesses that serve aircraft or passengers such as:

- Administration
- Military
- Airlines
- Maintenance
- Parking
- Concessions
- Car rental
- General aviation
- Air tours
- Air cargo

Additionally, airside and landside construction projects require continuous investments, many of which are high-dollar, long-term undertakings. Because commercial service and general aviation airports are essential to visitors' abilities to conduct business or vacation in Montana, airports support the hospitality industry through lodging, restaurant, retail, and entertainment spending.

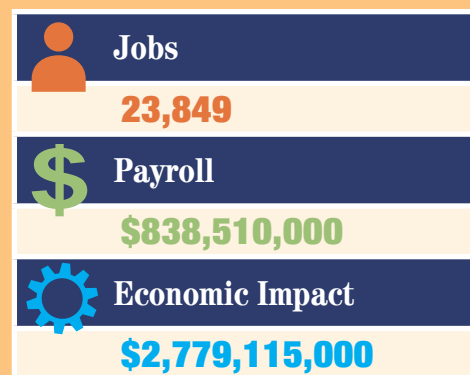
Airports' direct impacts also have spin-off effects throughout Montana, as dollars spent at an airport and by visitors off-airport are re-spent locally, regionally, and statewide. Spin-off effects are caused when a portion of direct business revenues are used to purchase goods and services in Montana (i.e., indirect effects) and when the portion of revenues paid as wages to workers are spent within the state (i.e., induced effects).

Combined, direct impacts and spin-off effects compose the total contribution of an individual airport and determine the statewide impact of Montana's airport system.



STATEWIDE IMPACTS

Aviation is a vital key to Montana's economic activity and transportation network. The public-use airports in the state contribute:



DIRECT ECONOMIC IMPACTS

On-Airport
\$939,000



Construction
\$693,000



Visitor Spending
\$305,000



GDV TOTAL IMPACTS

34
\$1,256,000
\$3,425,000

Dawson Community Airport



Dawson Community Airport (GDV) is located four miles northwest of Glendive in Dawson County, Montana. Dawson County is a rural agricultural region 35 miles west of the North Dakota border. Dawson Community Airport is a short distance from Interstate 94, which provides access to the City of Glendive.

Aviation activity at Dawson Community Airport varies. The airport experiences periodic corporate and business flights, aerial inspections, recreational flying and parachuting, emergency medical flights as required, and weekly pipeline flights. The number of Glendive residents using Cape Air services is increasing, creating optimism for the airport's future in commercial aviation.

While Dawson Community Airport does not experience heavy aviation traffic, it nonetheless provides a gateway for local and regional residents to other areas in the state and a link to invaluable community services.

Alternative accessible formats of this document will be provided on request. Persons who need an alternative format should contact the Civil Rights Bureau, Department of Transportation, 2701 Prospect Avenue., PO Box 201001, Helena, MT 59620. Telephone 406-444-9229. Those using a TTY may call 1(800)335-7592 or through the Montana Relay Service at 711.



Montana Department of Transportation
AERONAUTICS DIVISION

2630 Airport Road
PO Box 200507
Helena, MT 59620-0507

Prepared by:

Kimley»Horn

With additional support provided by EDR Group,
KLJ Engineering, and the University of Montana.

This document is printed at state expense. Information on the cost of producing this publication may be obtained by contacting the Department of Administration.