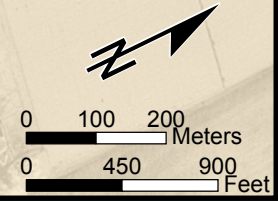
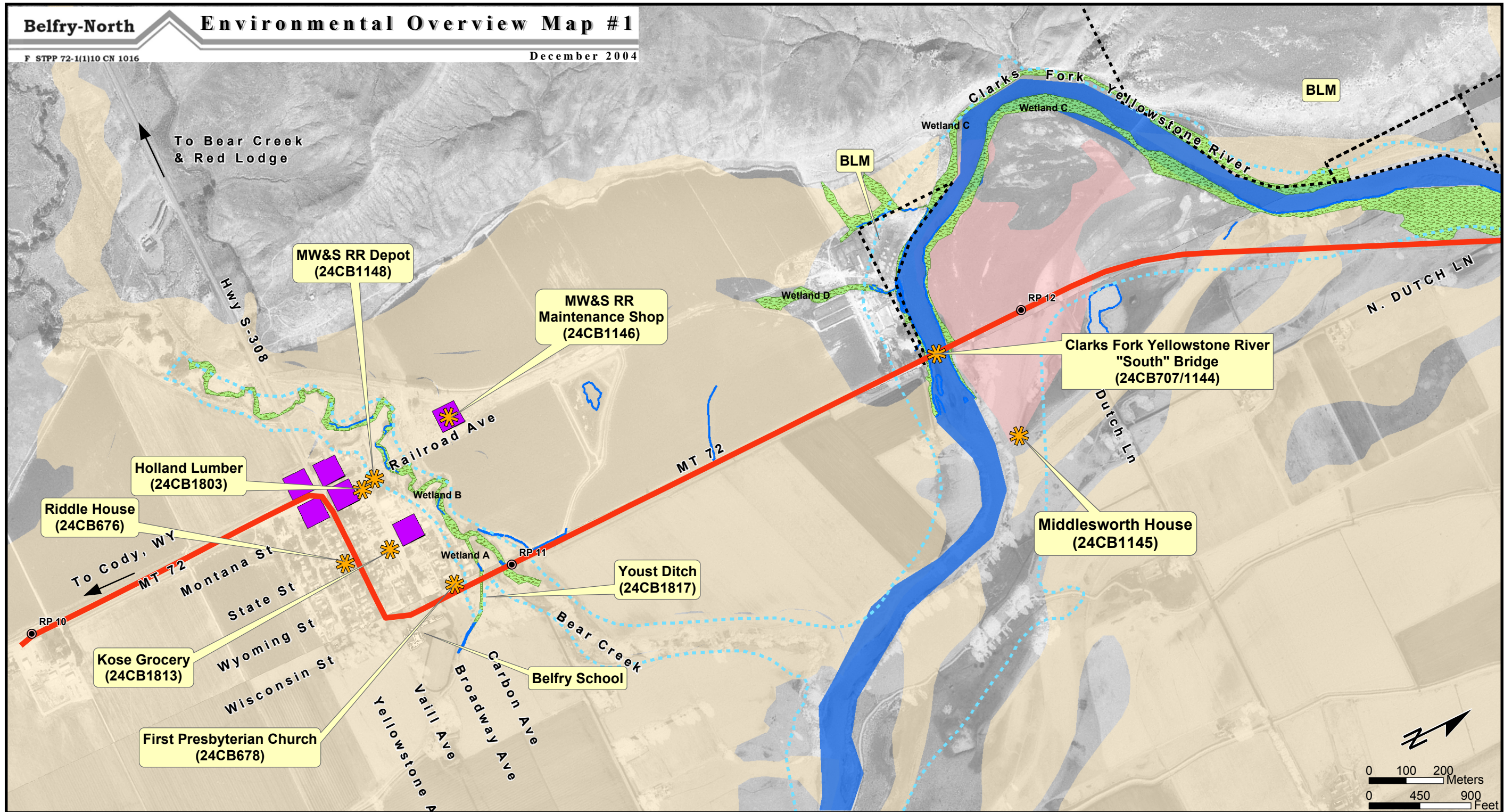


9.0 Appendices

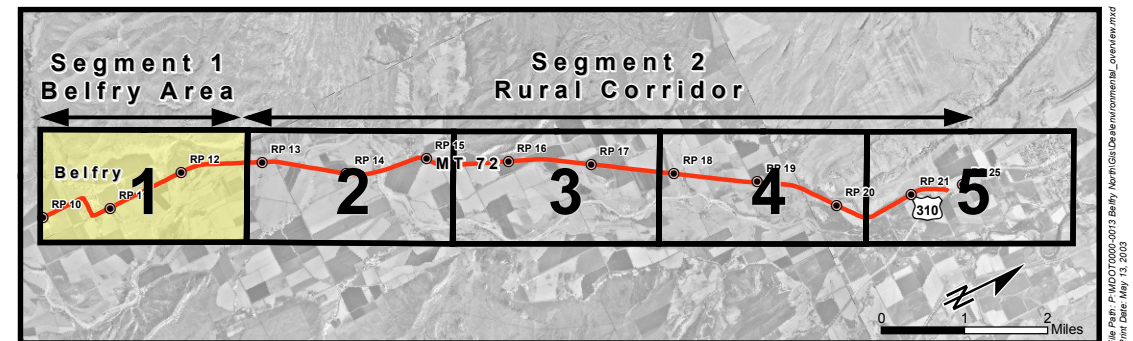
Appendix A - Environmental Overview Maps



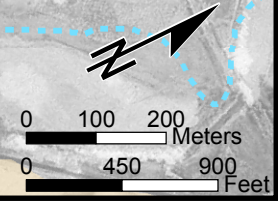
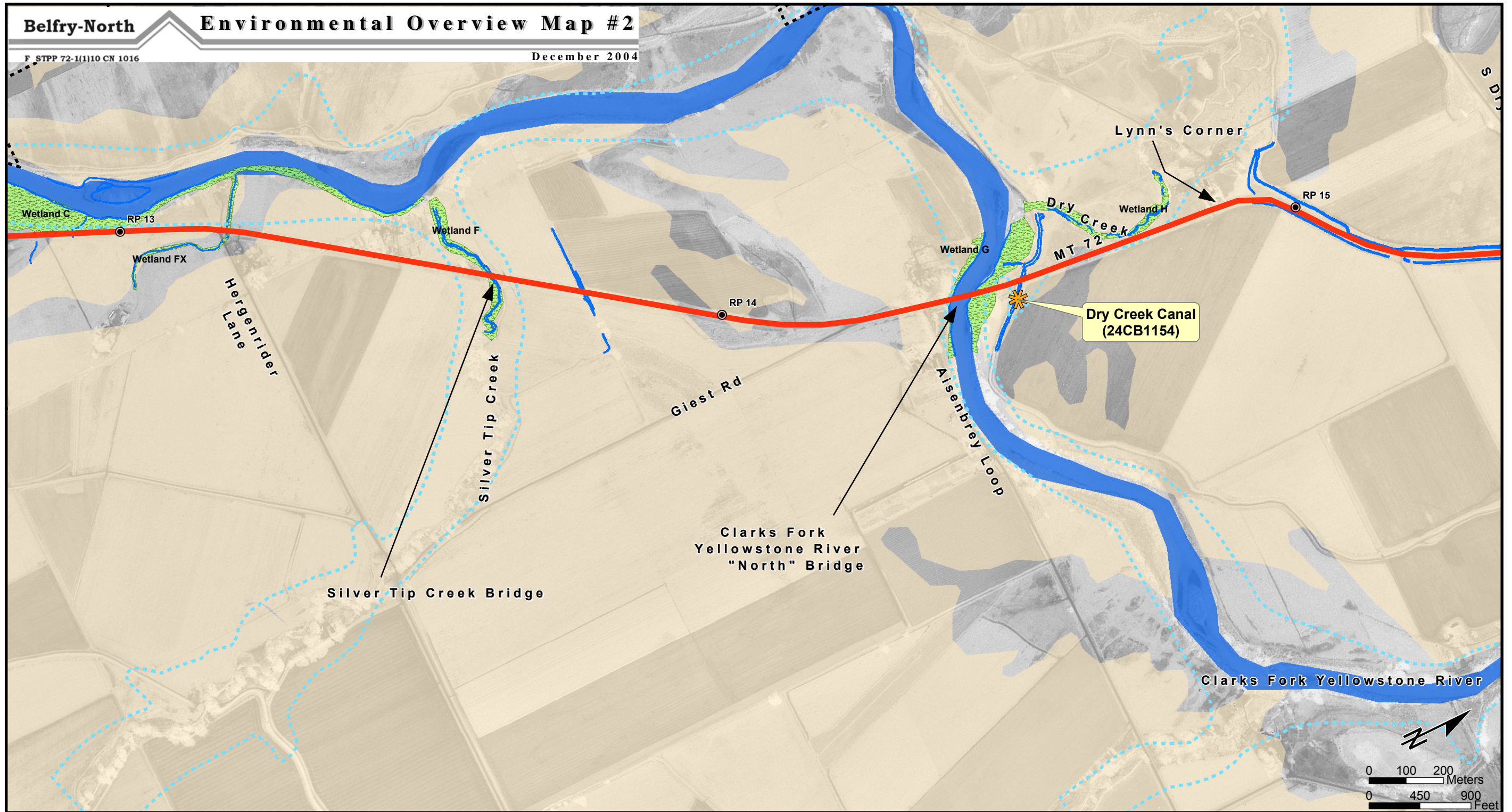
Legend:

- Reference Post
- MT 72 Existing Centerline
- ★ National Register of Historic Places Eligible
- ~ Ditches
- Clarks Fork Yellowstone River
- Jurisdictional Wetlands
- 100-Year Floodplain
- Hydric Soils
- Hazmat Area of Concern
- Farmland of Statewide Importance
- Prime Farmland if Irrigated

Map Location:



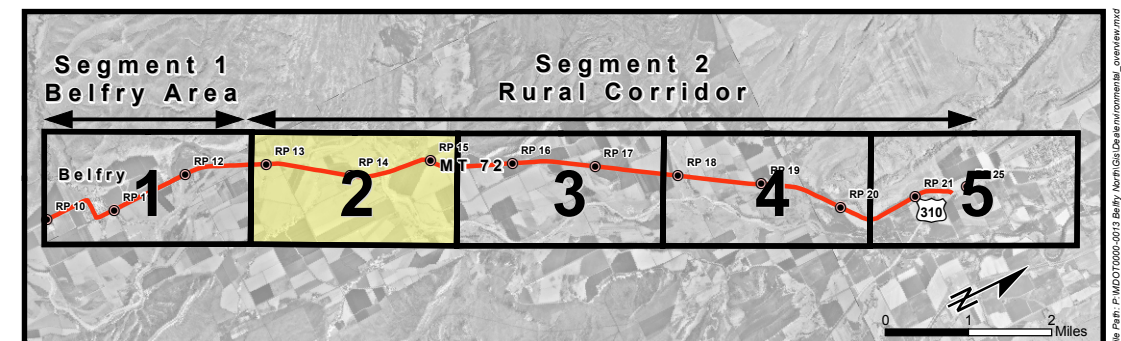
File Path: \\P:\GIS\Projects\2004\Belfry North\GIS\Environmental_Overview.mxd
 Print Date: May 13, 2005



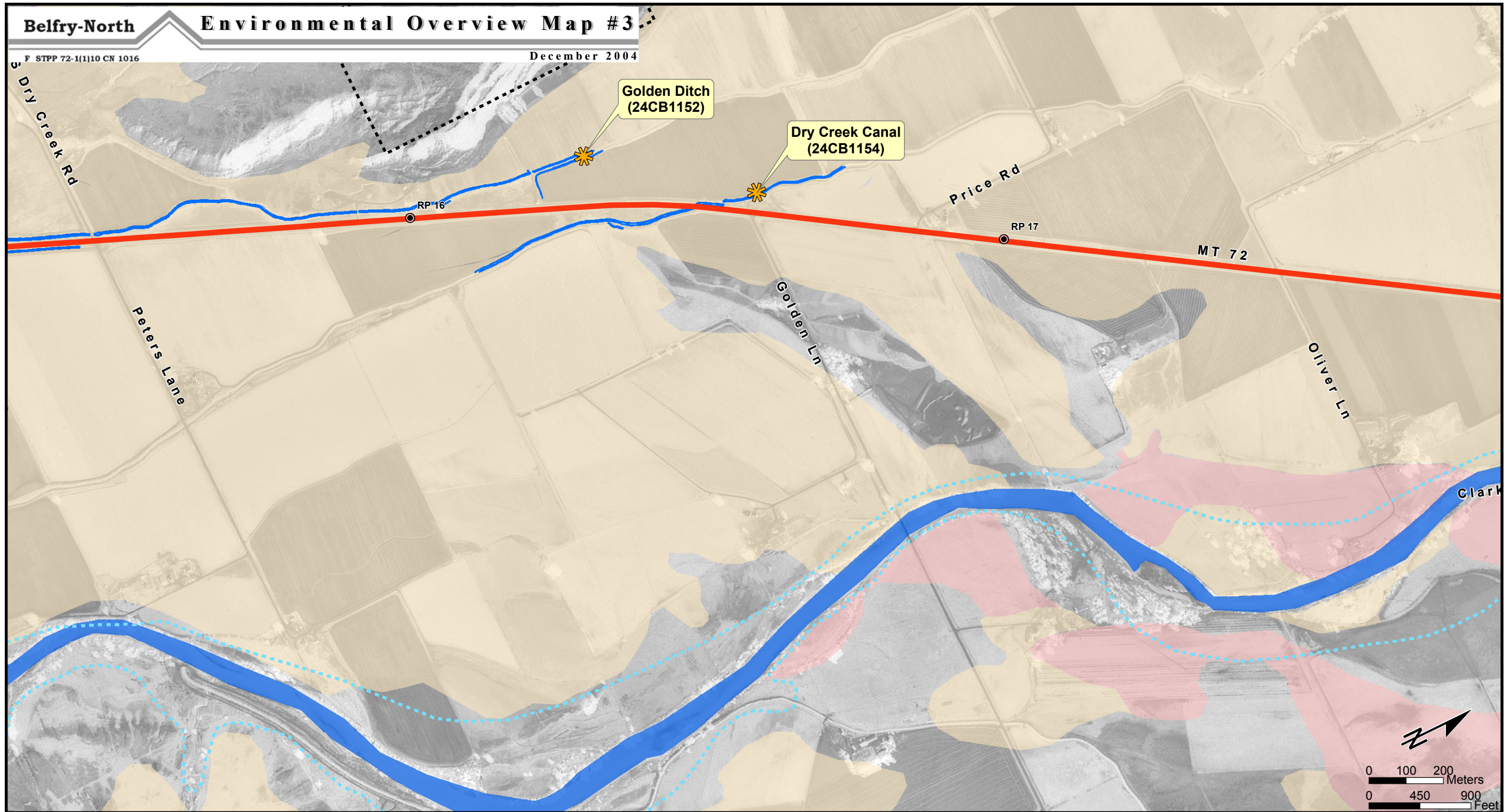
Legend:

- Reference Post
- MT 72 Existing Centerline
- ★ National Register of Historic Places Eligible
- ~ Ditches
- Clarks Fork Yellowstone River
- Jurisdictional Wetlands
- 100-Year Floodplain
- Hydric Soils
- Hazmat Area of Concern
- Farmland of Statewide Importance
- Prime Farmland if Irrigated

Map Location:



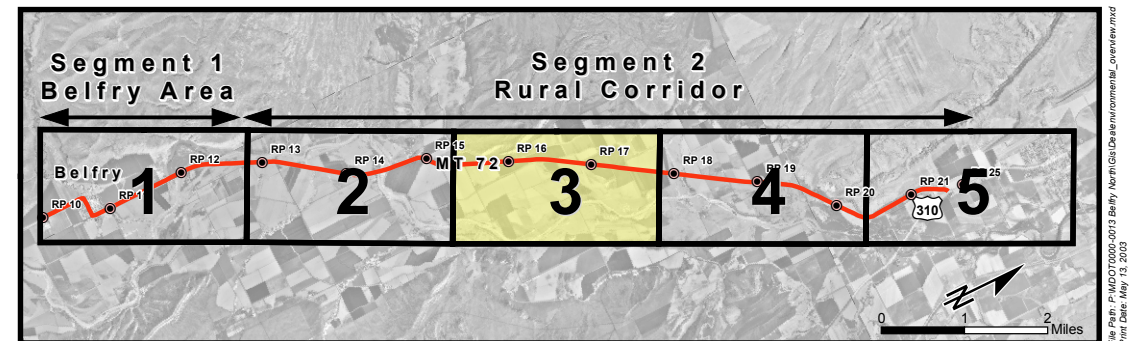
File Path: \\P:\GIS\Projects\2012\Belfry North\GIS\Environmental_Overview.mxd
Print Date: May 13, 2005

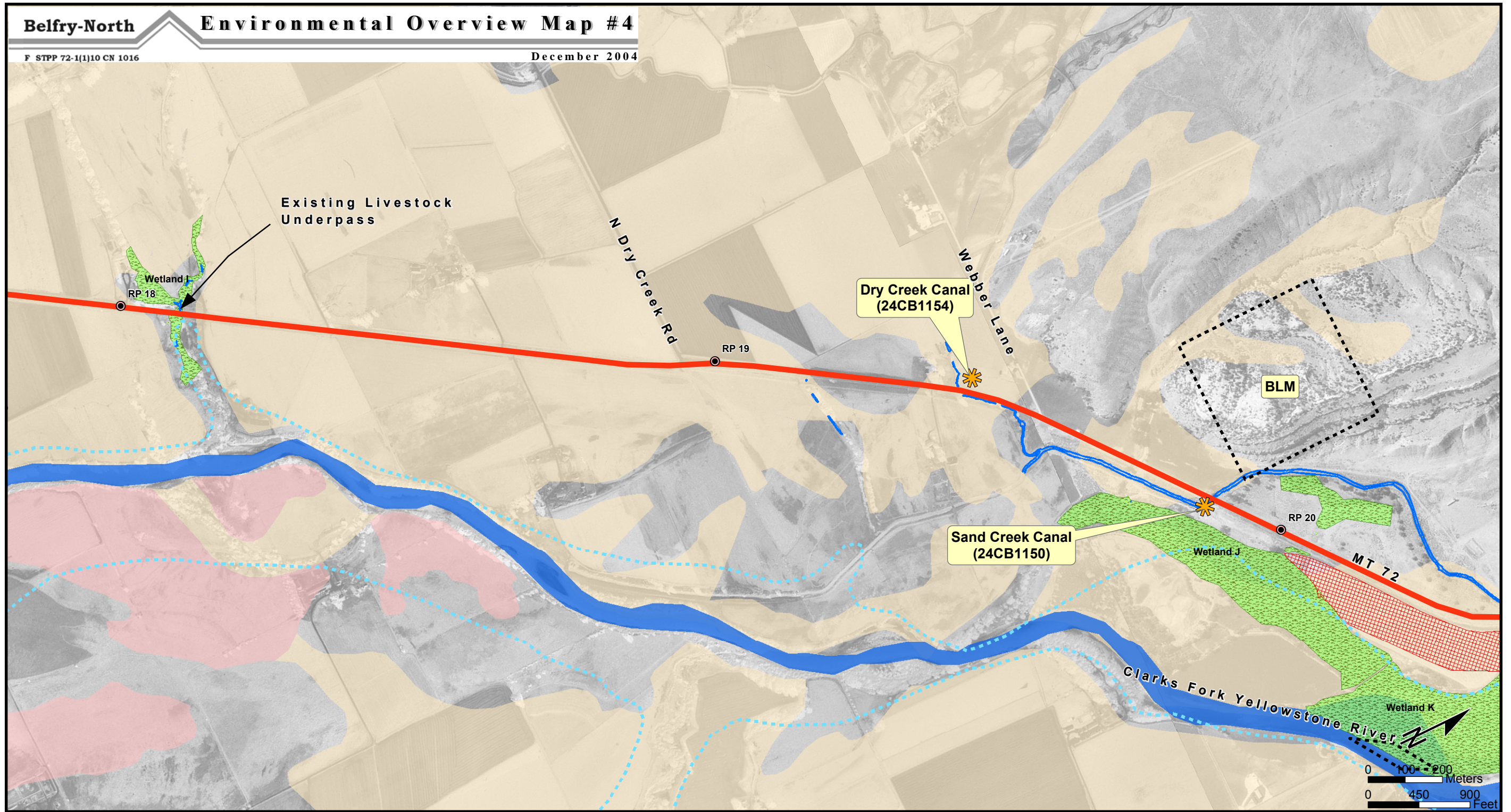


Legend:

- Reference Post
- MT 72 Existing Centerline
- ★ National Register of Historic Places Eligible
- ~ Ditches
- Clarks Fork Yellowstone River
- Jurisdictional Wetlands
- 100-Year Floodplain
- Hydric Soils
- Hazmat Area of Concern
- Farmland of Statewide Importance
- Prime Farmland if Irrigated

Map Location:

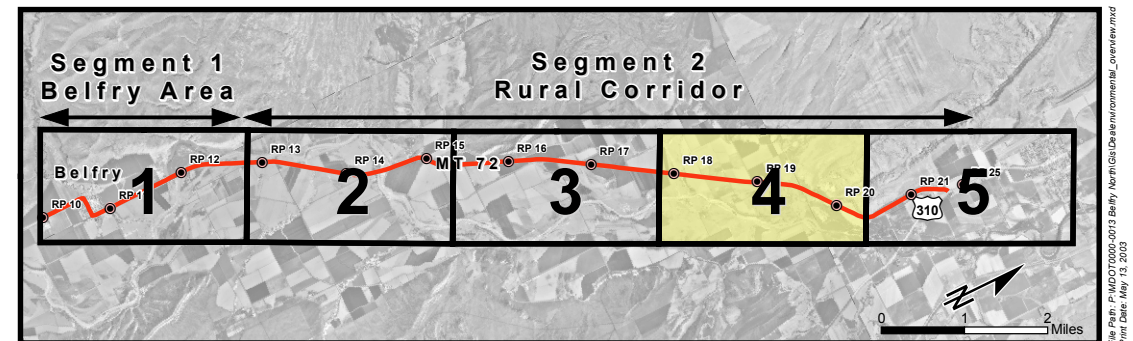




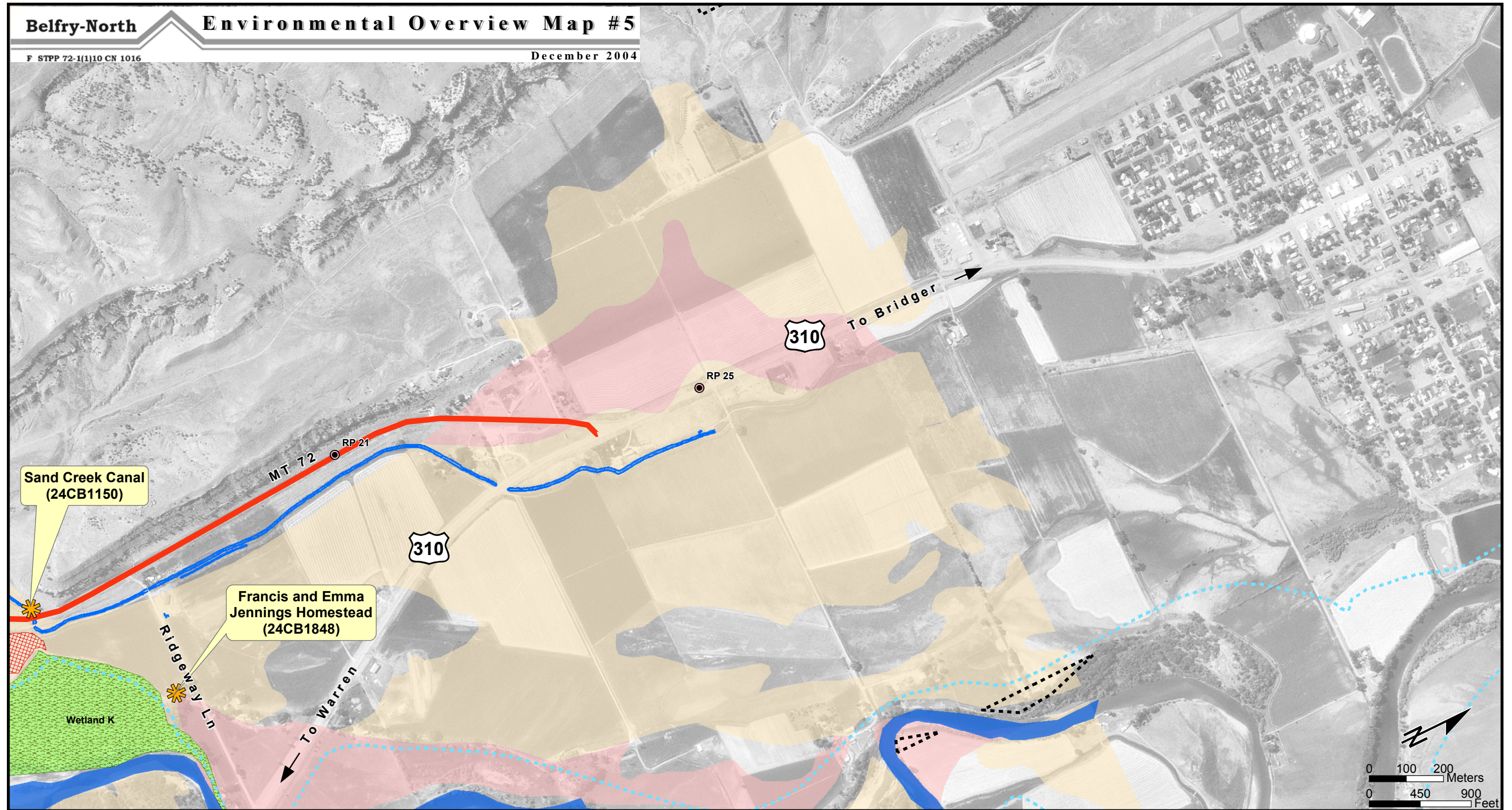
Legend:

- Reference Post
- MT 72 Existing Centerline
- ★ National Register of Historic Places Eligible
- ~ Ditches
- Clarks Fork Yellowstone River
- Jurisdictional Wetlands
- 100-Year Floodplain
- Hydric Soils
- Hazmat Area of Concern
- Farmland of Statewide Importance
- Prime Farmland if Irrigated

Map Location:



File Path: \\GIS\GIS\Projects\2012\Belfry North\GIS\Environmental_Overview.mxd
 Print Date: May 13, 2013



Legend:

- Reference Post
- MT 72 Existing Centerline
- ✱ National Register of Historic Places Eligible
- ~ Ditches
- Clarks Fork Yellowstone River
- Jurisdictional Wetlands
- 100-Year Floodplain
- Hydric Soils
- Hazmat Area of Concern
- Farmland of Statewide Importance
- Prime Farmland if Irrigated

Map Location:

