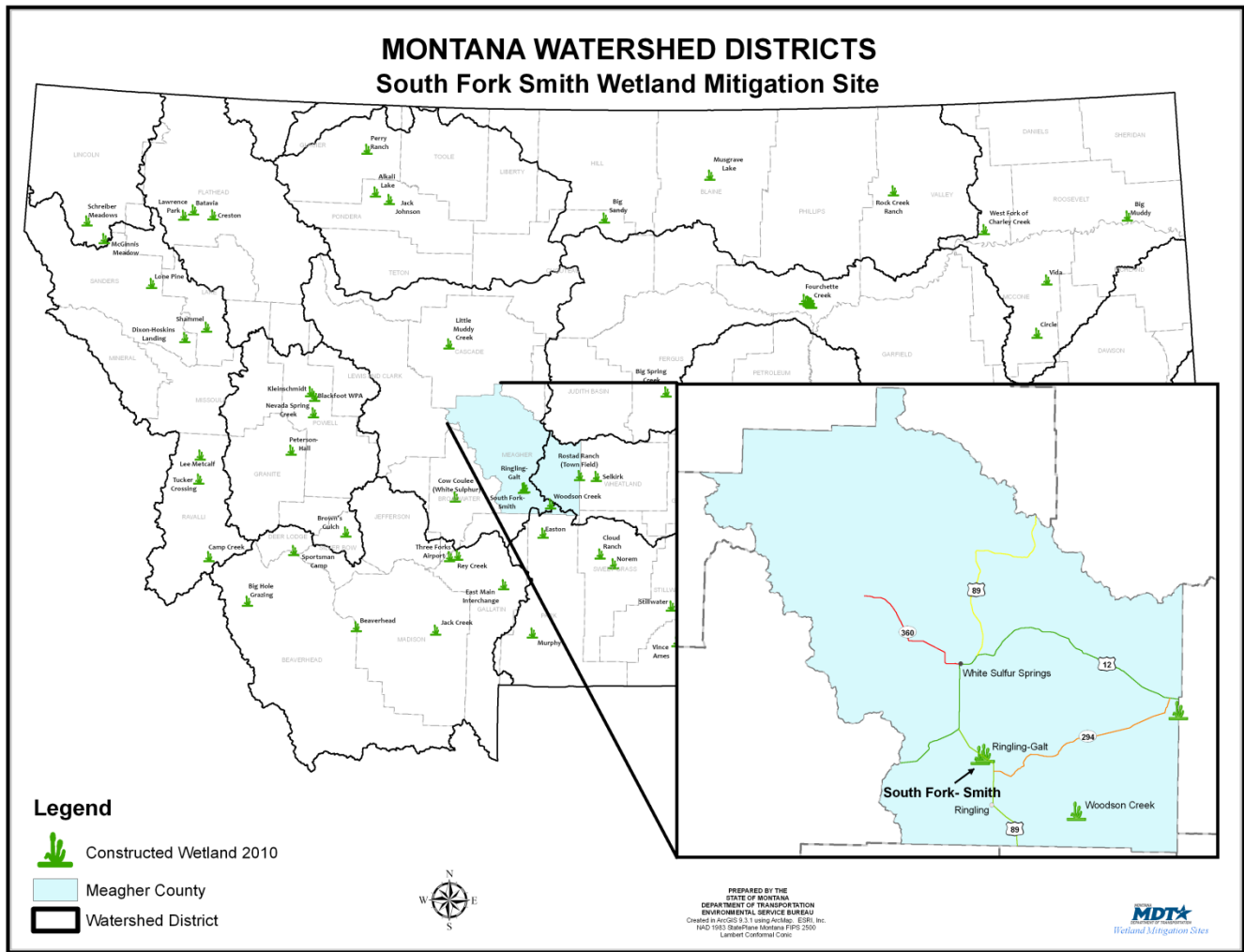


SOUTH FORK-SMITH RIVER

Watershed #7-Missouri-Sun-Smith River Basin
Meagher County, Montana



LAND OWNERSHIP: PRIVATE

BACKGROUND INFORMATION

In 2001 the Montana Department of Transportation (MDT) shifted a portion of the South Fork Smith River from its channelized location on the east side of U.S. Highway 89 to its historic channel on the west side of the roadway. The stream restoration site is located on private land north of Ringling, Meagher County in Watershed #7 (Missouri-Sun-Smith River Basin). The length of the South Fork river channel was reduced when it was moved to east side of the highway in 1910. This restoration resulted in a gain of 11,600 linear feet of channel length and various lost functions such as floodplain, fisheries and wetland habitat were restored to previous conditions.

WETLAND INHABITANTS

FISH	
Brook Trout (<i>Salvelinus fontinalis</i>)	
AMPHIBIANS	
Spotted Frog (<i>Rana pretiosa</i>)	
REPTILES	
Common Garter Snake (<i>Thamnophis sirtalis</i>)	
BIRDS	
American Wigeon (<i>Anas americana</i>)	Red-tailed Hawk (<i>Buteo jamaicensis</i>)
Blue-winged Teal (<i>Anas discors</i>)	Red-winged Blackbird (<i>Agelaius phoeniceus</i>)
Cinnamon Teal (<i>Anas cyanoptera</i>)	Sharp-shinned Hawk (<i>Accipiter striatus</i>)
Cliff Swallow (<i>Petrochelidon pyrrhonota</i>)	Sora (<i>Porzana Carolina</i>)
Common Snipe (<i>Gallinago gallinago</i>)	Sparrow (sp.)
Green-winged Teal (<i>Anas crecca</i>)	Western Meadowlark (<i>Sturnella neglecta</i>)
Killdeer (<i>Charadrius vociferous</i>)	
Mallard (<i>Anas platyrhynchos</i>)	
MAMMALS	
Mule Deer (<i>Odocoileus hemionus</i>)	
Elk (<i>Cervus elaphus</i>) (scat only)	
Richardson's Ground Squirrel (<i>Spermophilus richardsonii</i>)	
American Badger (<i>Taxidea taxus</i>)	
Pronghorn Antelope (<i>Antilocapra Americana</i>)	

Bolded species were documented during the 2006 monitoring. All other species were documented during one or more of the previous monitoring seasons.



America Wigeon



Brook Trout

WETLAND VEGETATION

Dominant wetland vegetation

Four community types were observed

Type 1- Broad-leaf cattail/ Nebraska sedge (*Typha latifolia*/*Carex nebrascensis*)

Type 2- Foxtail barley/ Rocky Mountain Iris (*Hordeum jubatum*/*Iris missouriensis*)

Type 3- Pondweed/Water milfoil (*Potamogeton*/*Myriophyllum*)

Type 4- Baltic rush (*Juncus Balticus*)



Rocky Mountain Iris

South Fork- Smith River



Click the icon below for complete monitoring reports for this site (2002 to 2006)

