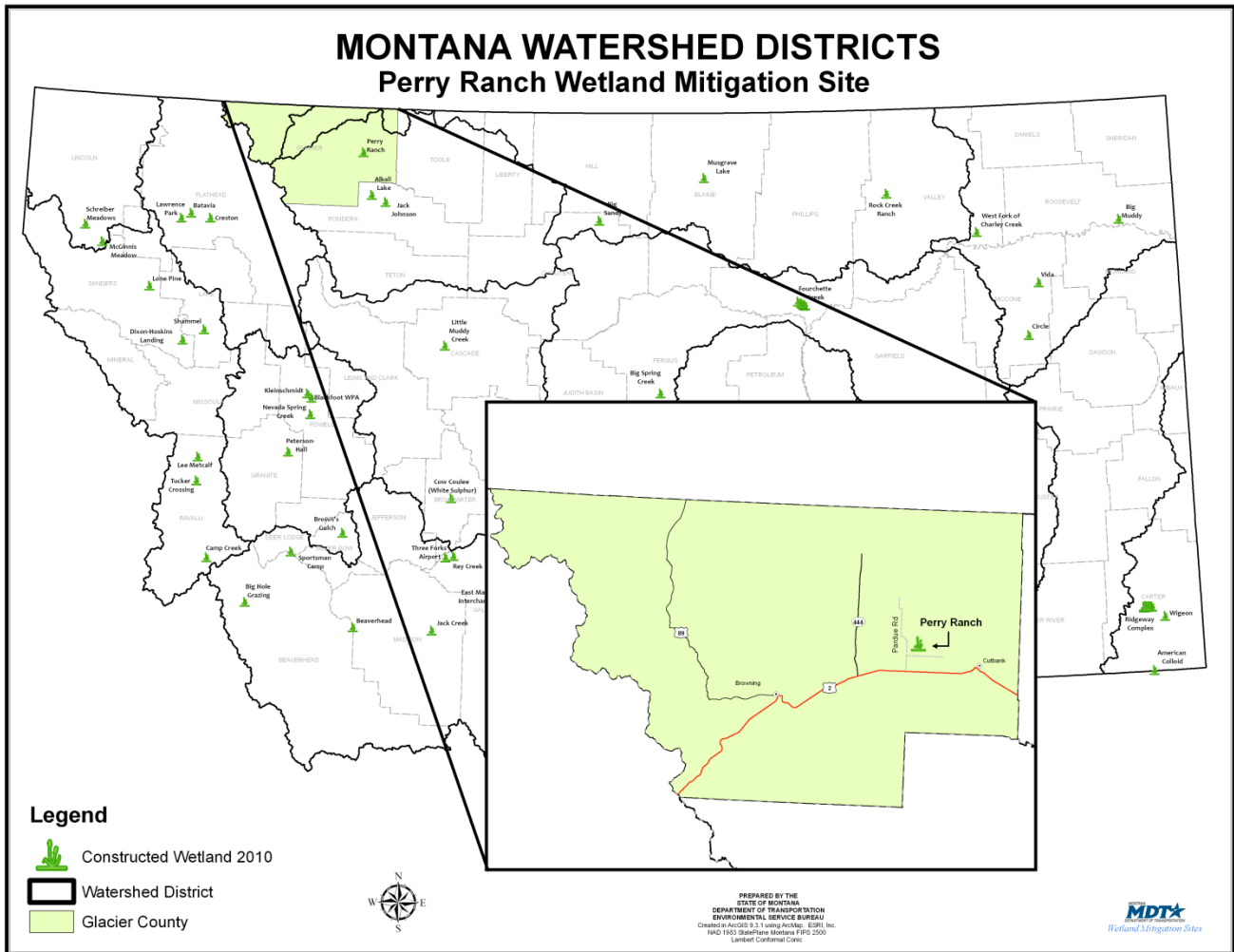


PERRY RANCH

Watershed # 8-Marias River Basin

Blackfeet Nation

Glacier County, Montana



LAND OWNERSHIP: BLACKFEET NATION

BACKGROUND INFORMATION

The Perry Ranch wetland mitigation site is the result of a cooperative project between the Blackfeet Nation and Montana Department of Transportation (MDT). The site is located west of Browning and north of U.S. Highway 2 in Glacier County in Watershed #8 (Marias River Basin). It was constructed in 2001 and is anticipated to provide approximately 28 acres of mitigation credits to mitigate transportation projects in the watershed.

WETLAND INHABITANTS

FISH	
None	
AMPHIBIAN	
Northern Leopard Frog (<i>Rana pipiens</i>)	Western Chorus Frog (<i>Pseudacris triseriata</i>)
REPTILE	
Western Terrestrial Garter Snake (<i>Thamnophis elegans</i>)	
BIRD	
American Avocet (<i>Recurvirostra americana</i>) American Goldfinch (<i>Carduelis tristis</i>) American Robin (<i>Turdus migratorius</i>) American White Pelican (<i>Pelecanus erythrorhynchos</i>) Bank Swallow (<i>Riparia riparia</i>) Barn Swallow (<i>Hirundo rustica</i>) Black Tern (<i>Chlidonias niger</i>) Blue-winged Teal (<i>Anas discors</i>) Brewer's Blackbird (<i>Euphagus cyanocephalus</i>) Canada Goose (<i>Branta Canadensis</i>) Chukar (<i>Alectoris chukar</i>) Cinnamon Teal (<i>Anas cyanoptera</i>) Cliff Swallow (<i>Petrochelidon pyrrhonota</i>) Common Nighthawk (<i>Chordeiles minor</i>) Common Snipe (<i>Gallinago gallinago</i>) Dark-eyed Junco (<i>Junco hyemalis</i>) Double-crested Cormorant (<i>Phalacrocorax auritus</i>) Eastern Kingbird (<i>Tyrannus tyrannus</i>) Franklin's Gull (<i>Larus pipixcan</i>) Gadwall (<i>Anas strepera</i>) Great Blue Heron (<i>Ardea herodias</i>) Greater Scaup (<i>Aythya marila</i>) Green-winged Teal (<i>Anas crecca</i>) Gray Partridge (<i>Perdix perdix</i>) Horned Lark (<i>Eremophila alpestris</i>)	Killdeer (<i>Charadrius vociferous</i>) Lesser Scaup (<i>Aythya affinis</i>) Long-billed Dowitcher (<i>Limnodromus scolopaceus</i>) Longspur spp. (<i>Calcarius spp.</i>) Mallard (<i>Anas platyrhynchos</i>) Northern Harrier (<i>Circus cyaneus</i>) Northern Rough-winged Swallow (<i>Stelgidopteryx serripennis</i>) Northern Shoveler (<i>Anas clypeata</i>) Red-winged Blackbird (<i>Agelaius phoeniceus</i>) Red-tailed Hawk (<i>Buteo jamaicensis</i>) Savannah Sparrow (<i>Passerculus sandwichensis</i>) Semipalmated Plover (<i>Charadrius semipalmatus</i>) Sandpiper (species unknown) Solitary Sandpiper (<i>Tringa solitaria</i>) Spotted Sandpiper (<i>Actitis macularia</i>) Tree Swallow (<i>Tachycineta bicolor</i>) Vesper Sparrow (<i>Pooecetes gramineus</i>) Western Meadowlark (<i>Sturnella neglecta</i>) Western Sandpiper (<i>Calidris mauri</i>) Willet (<i>Catoptrophorus semipalmatus</i>) Wilson's Phalarope (<i>Phalaropus tricolor</i>) Yellow-headed Blackbird (<i>Xanthocephalus xanthocephalus</i>) Yellowlegs species (<i>Tringa spp.</i>)
MAMMAL	
American Badger (<i>Taxidea taxus</i>) Coyote (<i>Canis latrans</i>) Deer (<i>Odocoileus spp.</i>) Fox (species unknown)	Raccoon (<i>Procyon lotor</i>) Richardson's Ground Squirrel (<i>Spermophilus richardsonii</i>) White-tailed Deer (<i>Odocoileus virginianus</i>)

Bolded species were observed during 2009.



Chukar



Yellow-headed Blackbird

WETLAND VEGETATION

Dominant wetland vegetation

Four community types were observed

Type 1- Baltic rush/ Clustered field sedge (*Juncus balticus*/*Carex praegracilis*)

Type 2- Creeping spike rush/ Water smartweed (*Eleocharis palustris*/*Polygonum amphibium*)

Type 3- Foxtail barley/ Scouring-rush (*Hordeum jubatum*/*Equisetum*/*Transitional Mudflat*)

Type 4- Foxtail barley (*Hordeum jubatum*)



Creeping spike rush

Perry Ranch



Click the icon below for complete monitoring reports for this site (2002 to 2009)

