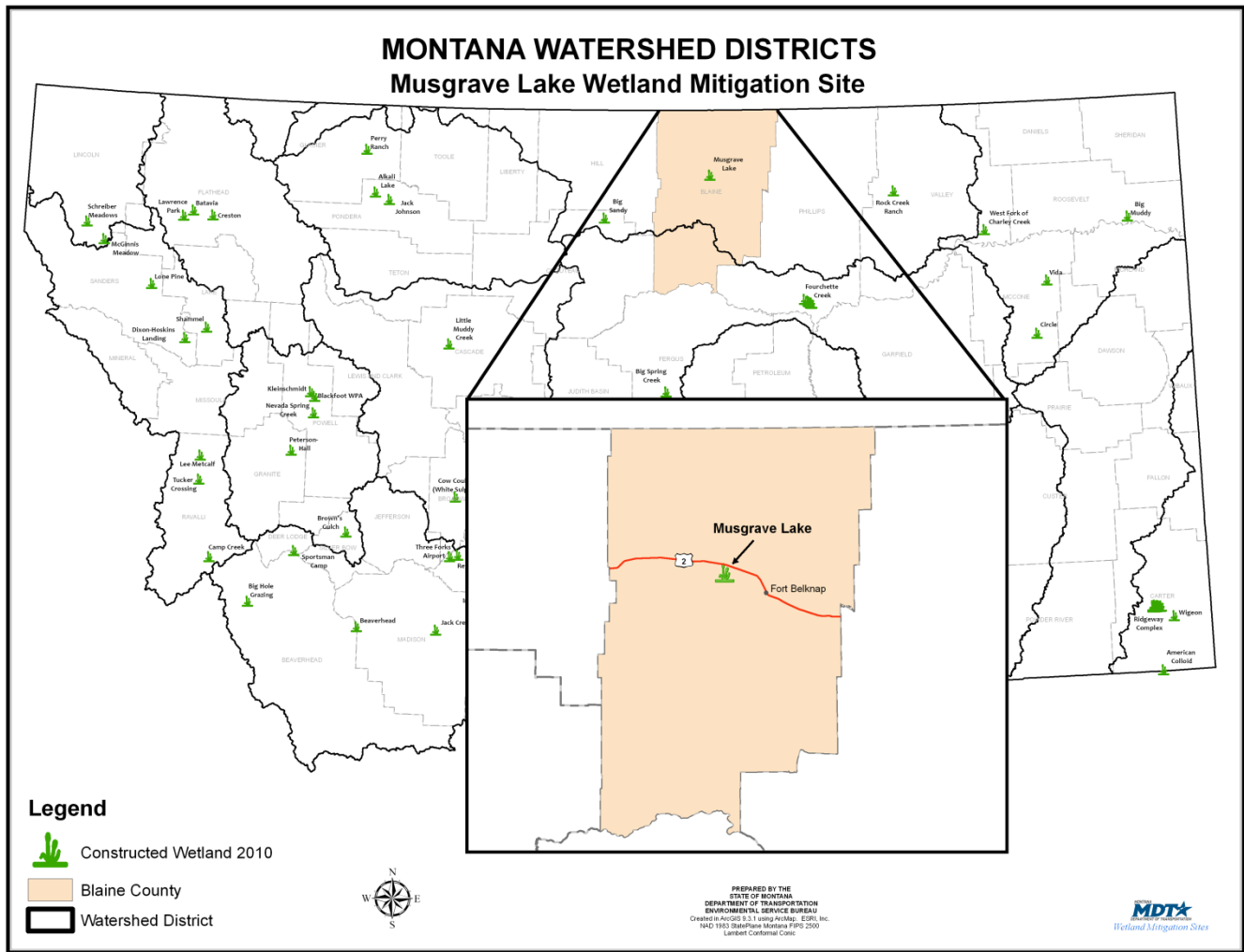


MUSGRAVE LAKE

Watershed # 11- Milk River Basin
Blaine County, Montana



LAND OWNERSHIP: PRIVATE

BACKGROUND INFORMATION

The Musgrave Lake wetland mitigation project was constructed in 2001 in Watershed #11 (Milk River Basin). It was constructed on private land south of Zurich in Blaine County. This restoration project has provided approximately 27 acres of mitigation credits to mitigate transportation projects in the watershed.

WETLAND INHABITANTS

| | |
|--|--|
| FISH | |
| Unidentified Minnow Species (<i>Hybognathus</i> sp.) | |
| AMPHIBIANS | |
| Northern Leopard Frog (<i>Rana pipiens</i>) | Western Chorus Frog (<i>Pseudacris triseriata</i>) |
| REPTILES | |
| Plains Garter Snake (<i>Thamnophis radix</i>) | |
| BIRDS | |
| American Coot (<i>Fulica americana</i>) | Lesser Scaup (<i>Aythya affinis</i>) |
| American Kestrel (<i>Falco sparverius</i>) | Long-billed Dowitcher (<i>Limnodromus scolopaceus</i>) |
| American Robin (<i>Turdus migratorius</i>) | Mallard (<i>Anas platyrhynchos</i>) |
| American White Pelican (<i>Pelecanus erythrorhynchos</i>) | Marbled Godwit (<i>Limosa fedoa</i>) |
| American Wigeon (<i>Anas americana</i>) | Marsh Wren (<i>Cistothorus palustris</i>) |
| Bank Swallow (<i>Riparia riparia</i>) | Mourning Dove (<i>Zenaidura macroura</i>) |
| Barn Swallow (<i>Hirundo rustica</i>) | Northern Flicker (<i>Colaptes auratus</i>) |
| Belted Kingfisher (<i>Ceryle alcyon</i>) | Northern Harrier (<i>Circus cyaneus</i>) |
| Black-billed Magpie (<i>Pica pica</i>) | Northern Pintail (<i>Anas acuta</i>) |
| Black-capped Chickadee (<i>Poecile atricapillus</i>) | Northern Rough-winged Swallow (<i>Stelgidopteryx serripennis</i>) |
| Blue-winged Teal (<i>Anas discors</i>) | Northern Shoveler (<i>Anas clypeata</i>) |
| Bobolink (<i>Dolichonyx oryzivorus</i>) | Orange-crowned Warbler (<i>Vermivora celata</i>) |
| Brewer's Blackbird (<i>Euphagus cyanocephalus</i>) | Red-tailed Hawk (<i>Buteo jamaicensis</i>) |
| Brown-headed Cowbird (<i>Molothrus ater</i>) | Red-winged Blackbird (<i>Agelaius phoeniceus</i>) |
| Bufflehead (<i>Bucephala albeola</i>) | Ring-billed Gull (<i>Larus delawarensis</i>) |
| Bullock's Oriole (<i>Icterus bullockii</i>) | Ring-necked Pheasant (<i>Phasianus colchicus</i>) |
| Canada Goose (<i>Branta canadensis</i>) | Rock Dove (<i>Columba livia</i>) |
| Canvasback (<i>Aythya valisineria</i>) | Savannah Sparrow (<i>Passerculus sandwichensis</i>) |
| Cedar Waxwing (<i>Bombycilla cedrorum</i>) | Sharp-tailed Grouse (<i>Tympanuchus phasianellus</i>) |
| Chipping Sparrow (<i>Spizella passerina</i>) | Solitary Sandpiper (<i>Tringa solitaria</i>) |
| Clay-colored Sparrow (<i>Spizella pallida</i>) | Song Sparrow (<i>Melospiza melodia</i>) |
| Cliff Swallow (<i>Petrochelidon pyrrhonota</i>) | Sora (<i>Porzana carolina</i>) |
| Common Grackle (<i>Quiscalus quiscula</i>) | Spotted Sandpiper (<i>Actitis macularia</i>) |
| Common Nighthawk (<i>Chordeiles minor</i>) | Swainson's Hawk (<i>Buteo swainsoni</i>) |
| Common Snipe (<i>Gallinago gallinago</i>) | Tree Swallow (<i>Tachycineta bicolor</i>) |
| Common Tern (<i>Sterna hirundo</i>) | Upland Sandpiper (<i>Bartramia longicauda</i>) |
| Common Yellowthroat (<i>Geothlypis trichas</i>) | Warbling Vireo (<i>Vireo gilvus</i>) |
| Double-crested Cormorant (<i>Phalacrocorax auritus</i>) | Western Meadowlark (<i>Sturnella neglecta</i>) |
| Eastern Kingbird (<i>Tyrannus tyrannus</i>) | Western Sandpiper (<i>Calidris mauri</i>) |
| European Starling (<i>Sturnus vulgaris</i>) | Western Wood-pewee (<i>Contopus sordidulus</i>) |
| Franklin's Gull (<i>Larus pipixcan</i>) | Willet (<i>Catoptrophorus semipalmatus</i>) |
| Gadwall (<i>Anas strepera</i>) | Willow Flycatcher (<i>Empidonax traillii</i>) |
| Gray Catbird (<i>Dumetella carolinensis</i>) | Wilson's Phalarope (<i>Phalaropus tricolor</i>) |
| Great Horned Owl (<i>Bubo virginianus</i>) | Wood Duck (<i>Aix sponsa</i>) |
| Great Blue Heron (<i>Ardea herodias</i>) | Yellow-rumped Warbler (<i>Dendroica coronata</i>) |
| Green-winged Teal (<i>Anas crecca</i>) | Yellow Warbler (<i>Dendroica petechia</i>) |
| House Wren (<i>Troglodytes aedon</i>) | Yellow-headed Blackbird (<i>Xanthocephalus xanthocephalus</i>) |
| Killdeer (<i>Charadrius vociferans</i>) | |
| Least Flycatcher (<i>Empidonax minimus</i>) | |
| MAMMALS | |
| American Badger (<i>Taxidea taxus</i>) | Meadow Vole (<i>Microtus pennsylvanicus</i>) |
| American Beaver (<i>Castor canadensis</i>) | Raccoon (<i>Procyon lotor</i>) |
| Coyote (<i>Canis latrans</i>) | Richardson's Ground Squirrel (<i>Spermophilus richardsonii</i>) |
| Long-tailed Weasel (<i>Mustela frenata</i>) | White-tailed Deer (<i>Odocoileus virginianus</i>) |

Bolded species were observed during 2004 monitoring. All other species were observed during one or more of the previous monitoring years, but not during 2004.

WETLAND VEGETATION

Dominant wetland vegetation

Nine community types were observed

Type 1- Broad-leaf cattail/Hardstem bulrush (*Typha latifolia/Scirpus acutus*)

Type 2- Water smartweed (*Polygonum amphibium*)

Type 3- Sandbar willow/ Russian olive (*Salix exigua/Elaeagnus angustifolia*)

Type 4- Curly pondweed/Parrot feather watermilfoil (*Potamogeton/Myriophyllum*)

Type 5- Sedge (*Carex spp.*)

Type 6- Eastern cottonwood (*Populus deltoids*)

Type 7- Curly dock (*Rumex crispus*)

Type 8- Saltmarsh bulrush/ American sloughgrass (*Scirpus maritimus / Beckmannia syzigachne*)

Type 9- American sloughgrass (*Beckmannia syzigachne*)



American sloughgrass

Musgrave Lake



Click the icon below for complete monitoring reports for this site (2001 to 2006)

