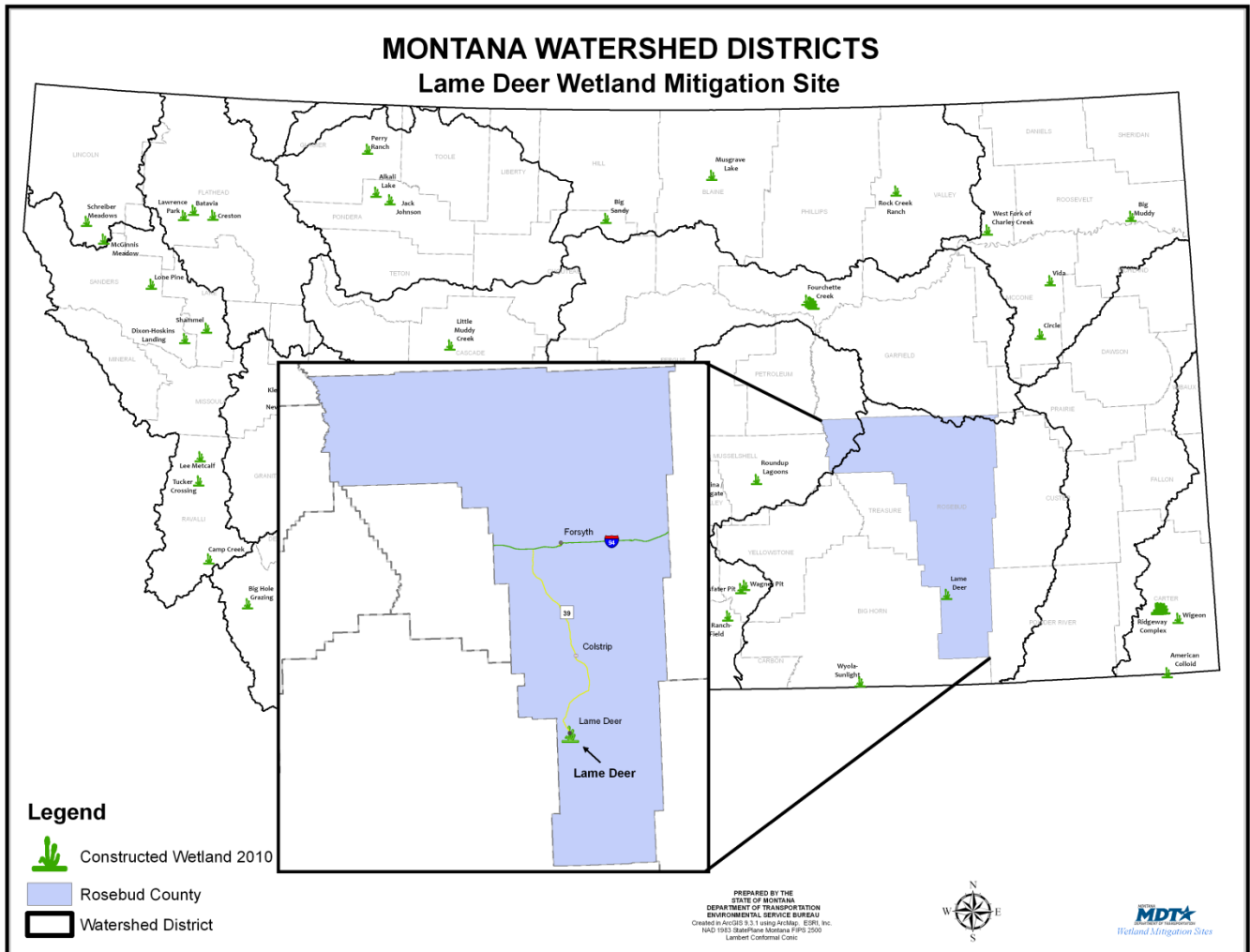


LAME DEER

Watershed # 14-Middle Yellowstone River Basin
Northern Cheyenne Reservation
Rosebud County, Montana



LAND OWNERSHIP: NORTH CHEYENNE INDIAN TRIBE

BACKGROUND INFORMATION

The Lame Deer - East wetlands, located in Watershed #14 (Middle Yellowstone River Basin), were constructed in Rosebud County within the town of Lame Deer. There are three mitigation sites within this project: the Lame Deer school mitigation site is adjacent to a school in the center of town and two recreated wetlands located along Highway 212. This restoration project provided approximately 1.79 acres of mitigation credits to mitigate transportation projects in the watershed.

WETLAND INHABITANTS

AMPHIBIANS AND REPTILES	
Northern Leopard Frog (<i>Rana pipiens</i>)	
BIRDS	
American Robin (<i>Turdus migratorius</i>) Cedar Waxwing (<i>Bombycilla cedrorum</i>) Common Grackle* (<i>Quiscalus quiscula</i>) Common Yellowthroat (<i>Geothlypis trichas</i>)	Eastern Kingbird (<i>Tyrannus tyrannus</i>) Song Sparrow* (<i>Melospiza melodia</i>) Yellow Warbler* (<i>Dendroica petechia</i>)
MAMMALS	
Cattle (tracks)	

*Individuals not in wetland but in adjoining upland.

Bolded species indicate those documented within the analysis area for the first time in 2004.



Cedar Waxwing



Yellow Warbler

WETLAND VEGETATION

Dominant wetland vegetation

Eight community types were observed

Type 1- Bulrush (*Scirpus spp.*)

Type 2- Foxtail barley/ Creeping spikerush (*Hordeum jubatum/Eleocharis palustris*)

Type 3- Sandbar willow/Nuttall's alkali grass (*Salix exigua/Puccinellia nuttalliana*)

Type 4- Upland (Undeveloped Wetland)

Type 5- Wheatgrass/ Yellow sweetclover (*Agropyron sp./Melilotus officinalis*)

Type 6- Yellow sweetclover/Prickly lettuce/ Canada thistle (*Melilotus officinalis/Lactuca serriola/Cirsium arvense*)

Type 7- Three-square bulrush/ Foxtail barley (*Scirpus pungens/Hordeum jubatum*)

Type 8- Quaking aspen/Sandbar willow/Three-square bulrush (*Populus tremula/Salix exigua/Scirpus pungens*)

Lame Deer



Click the icon below for complete monitoring reports for this site (2002 to 2007)

