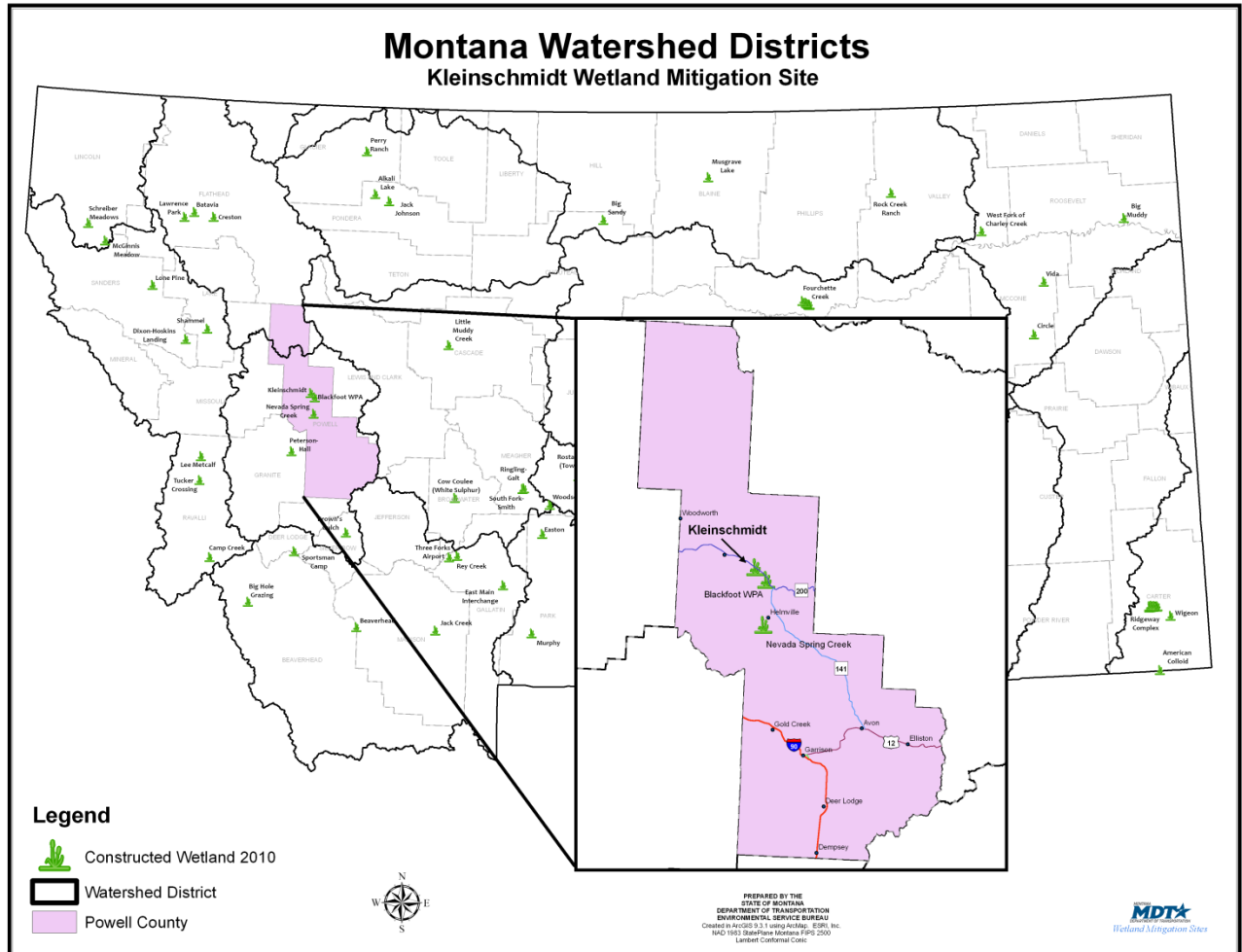


# KLEINSCHMIDT

Watershed #2- Upper Clark Fork River Basin  
Powell County, Montana



**LAND OWNERSHIP: PRIVATE**

## BACKGROUND INFORMATION

The Kleinschmidt Creek Aquatic Mitigation Site was completed during the summer of 2001, within the 47-acre perpetual wetland conservation easement. It is located east of Ovando along Highway 200 in Powell County. The overall goals of this project were the restoration, creation, and enhancement of heavily grazed and degraded wetlands along with restoration of 5,000 feet of Kleinschmidt Creek through channel restoration and fisheries habitat enhancements. Kleinschmidt Creek flows west until eventually draining into the North Fork of the Blackfoot River in Watershed #2 (Upper Clark Fork River Basin). The perennial creek is spring fed, which provides the primary hydrology source. This restoration project provides approximately 12 acres of mitigation credits to mitigate transportation projects in the watershed.

---

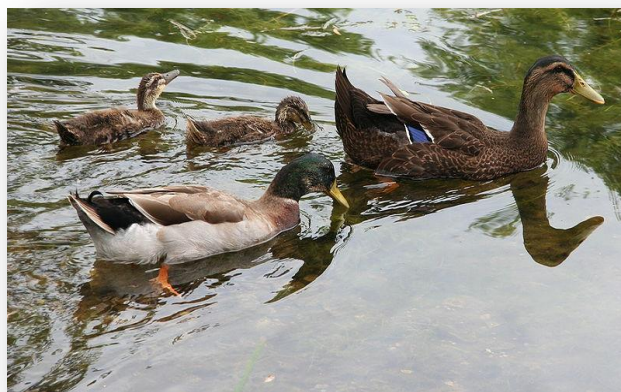
## WETLAND INHABITANTS

<b>FISH</b> Westslope Cutthroat Trout ( <i>Oncorhynchus clarki lewisi</i> ) Brook Trout ( <i>Salvelinus fontinalis</i> ) Brown Trout ( <i>Salmo trutta linnaeus</i> ) Bull Trout ( <i>Salvelinus confluentus</i> ) Rainbow ( <i>Oncorhynchus mykiss</i> )
<b>AMPHIBIANS</b> Spotted Frog ( <i>Rana luteiventris</i> )
<b>REPTILES</b> None
<b>BIRDS</b> American Crow ( <i>Corvus brachyrhynchos</i> ) Brewers Blackbird ( <i>Euphagus cyanocephalus</i> ) Bluebird ( <i>Sialia mexicana</i> ) Canada Goose ( <i>Branta canadensis</i> ) Mallard ( <i>Anas platyrhynchos</i> ) Killdeer ( <i>Charadrius vociferus</i> )
<b>MAMMALS</b> Coyote ( <i>Canis latrans</i> ) Deer ( <i>Odocoileus sp.</i> ) Elk ( <i>Cervus elaphus</i> )

Bolded species were observed during 2004 monitoring.



**Westslope Cutthroat Trout**



**Mallard**

---

---

## WETLAND VEGETATION

### Dominant wetland vegetation

*Seven wetland community types were observed*

**Type 3-** Timothy/ Redtop (*Phleum/Agrostis*)

**Type 4-** Rush/Sedge (*Juncus spp./Carex spp.*)

**Type 5-** Reed grass/ Redtop (*Phalaris spp./Agrostis*)

**Type 6-** Rush/Redtop (*Juncus spp./Agrostis*)

**Type 7-** Sedge/Rush (*Carex spp./Juncus spp.*)

**Type 9-** Willow (*Salix spp.*)

**Type 10-** Willow/ Alder (*Salix spp./Alnus spp.*)



**Timothy (Inflorescences)**

---

---

## Kleinschmidt



*Click the icon below for complete monitoring reports for this site (2001 to 2007)*

