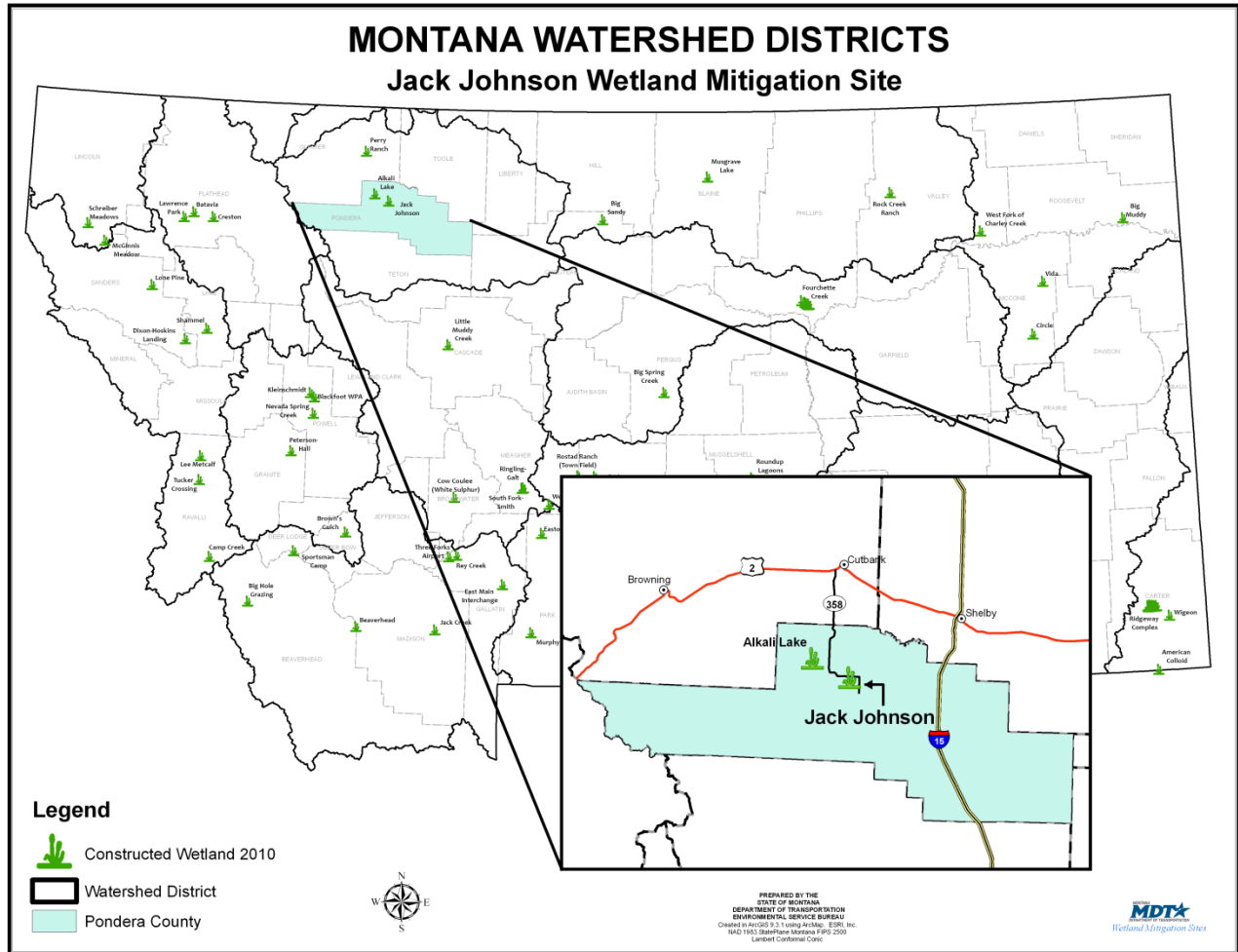


# JACK JOHNSON

Watershed # 8- Marias River Basin  
Pondera County, Montana



**LAND OWNERSHIP: PRIVATE**

## BACKGROUND INFORMATION

The Jack Johnson wetland mitigation site was constructed in 1994 to mitigate wetland impacts associated with Montana Department of Transportation (MDT) projects in Watershed #8 (Marias River Basin). It is located northwest of Valier, in Pondera County on private property protected with an MDT Wetland Conservation Easement. This restoration project has provided approximately 22 acres of mitigation credits to mitigate transportation projects in the watershed.

# WETLAND INHABITANTS

## AMPHIBIANS

Northern Leopard Frog (*Rana pipiens*)

## BIRDS

American Avocet (*Recurvirostra americana*)  
American Kestrel (*Falco sparverius*)  
American Wigeon (*Anas americana*)  
Barn Swallow (*Hirundo rustica*)  
Brewer's Blackbird (*Euphagus cyanocephalus*)  
Brown-headed Cowbird (*Molothrus ater*)  
Cliff Swallow (*Petrochelidon pyrrhonota*)  
Common Snipe (*Gallinago gallinago*)  
Gadwall (*Anas strepera*)  
Killdeer (*Charadrius vociferous*)  
Mallard (*Anas platyrhynchos*)  
Marbled Godwit (*Limosa fedoa*)  
Marsh Wren (*Cistothorus palustris*)  
Mourning Dove (*Zenaida macroura*)  
Northern Harrier (*Circus cyaneus*)  
Northern Shoveler (*Anas clypeata*)  
Red-winged Blackbird (*Agelaius phoeniceus*)  
Ring-billed Gull (*Larus delawarensis*)  
Ring-necked Pheasant (*Phasianus colchicus*)  
Rock Dove (*Columba livia*)  
Sandhill Crane (*Grus Canadensis*)  
Savannah Sparrow (*Passerculus sandwichensis*)  
Sharp-tailed Grouse (*Tympanuchus phasianellus*)  
Tree Swallow (*Tachycineta bicolor*)  
Vesper Sparrow (*Pooecetes gramineus*)  
Western Meadowlark (*Strunella neglecta*)  
Willet (*Catoptrophorus semipalmatus*)  
Wilson's Phalarope (*Phalaropus tricolor*)  
Yellow-headed Blackbird (*Xanthocephalus xanthocephalus*)

## MAMMALS

Richardson's Ground Squirrel (*Spermophilus richardsonii*)  
Striped Skunk (*Mephitis mephitis*)  
White-tailed Deer (*Odocoileus virginianus*)



**Killdeer**



**American Wigeon**

# WETLAND VEGETATION

## Dominant wetland vegetation

*Seven types of communities were observed*

**Type 1-** Broad-leaf cattail/ Hardstem bulrush (*Typha latifolia/Scirpus acutus*)

**Type 2-** Meadow foxtail/Woolly sedge (*Alopecurus pratensis/Carex lanuginosa*)

**Type 3-** Broad-leaf cattail/Foxtail barley (*Typha latifolia/Hordeum jubatum*)

**Type 4-** Knotweed/Narrow-leaf plantain (*Polygonum/Alisma gramineum*)

**Type 5-** Foxtail barley/Goosefoot (*Hordeum jubatum/Chenopodium*)

**Type 6-** Mud flats

**Type 7-** Goosefoot (*Chenopodium*)



**Woolly sedge**

---

---

**Jack Johnson**



*Click the icon below for complete monitoring reports for this site (2001 to 2003)*

