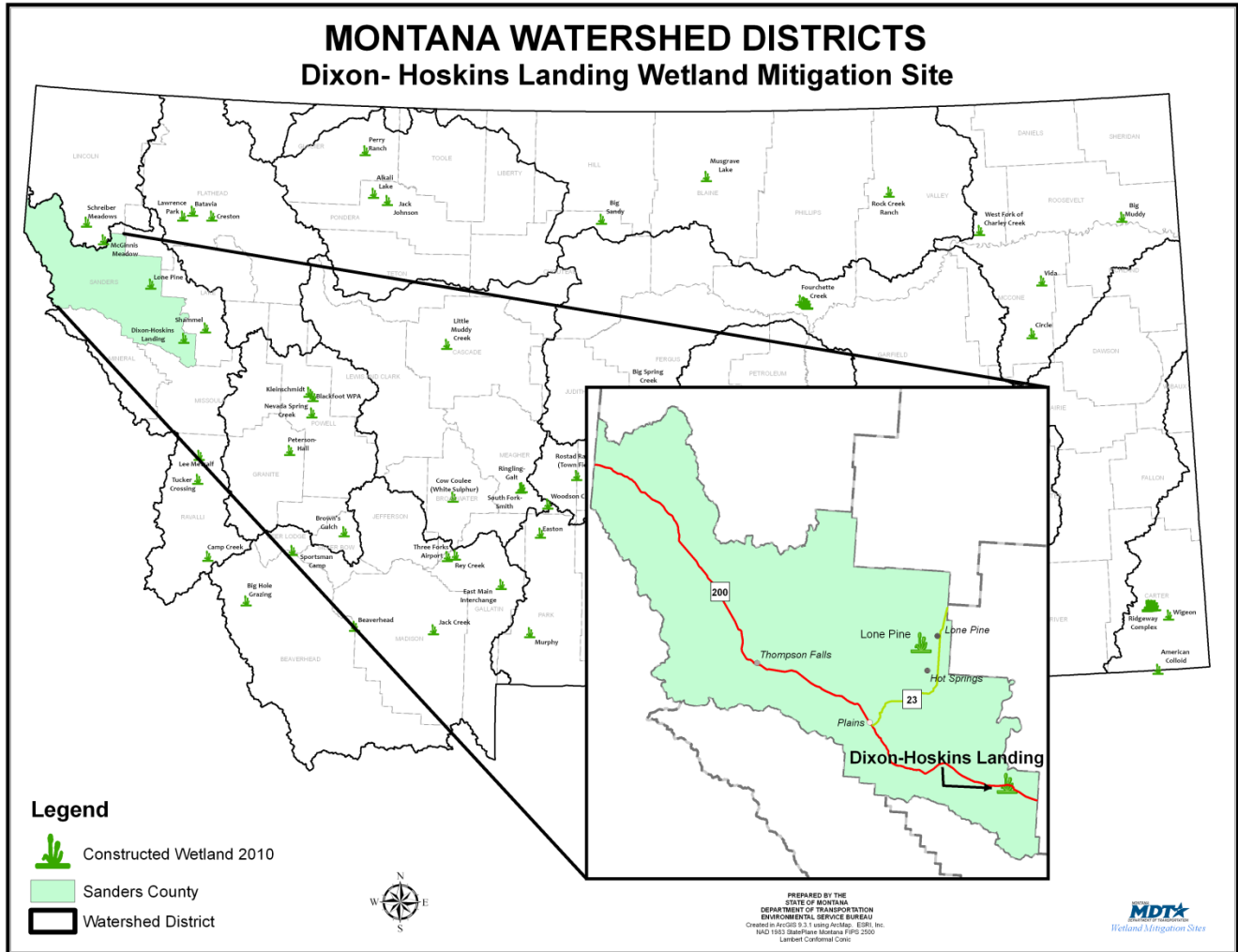


HOSKINS LANDING

*Flathead Indian Reservation
Watershed # 3- Lower Clark Fork River Basin
Sanders County, Montana*



LAND OWNERSHIP: CONFEDERATED SALISH & KOOTENAI TRIBES (CSKT)

BACKGROUND INFORMATION

The Hoskins Landing Wetland Mitigation Site was constructed in 2002 in cooperation with the Confederated Salish and Kootenai Tribe to mitigate wetland impacts associated with Montana Department of Transportation (MDT) proposed highway reconstruction projects on the Flathead Reservation. Hoskins Landing is located north of Dixon, adjacent to the Flathead River in Watershed # 3 (Lower Clark Fork River Basin). This site managed by the CSKT Natural Resources Department under a Tribal Natural Resource easement. The restoration project provided approximately 8 acres of mitigation credits.

WETLAND INHABITANTS

FISH	
None (no fish surveys implemented)	
AMPHIBIANS	
None	
REPTILES	
Painted Turtle (<i>Chrysemys picta</i>) ³	
BIRDS	
American Crow (<i>Corvus brachyrhynchos</i>) Barn Swallow (<i>Hirundo rustica</i>) ¹ Black & White Warbler (<i>Mniotilta varia</i>) Blue-winged Teal (<i>Anas discors</i>) ¹ Canada Goose (<i>Branta canadensis</i>) ¹ Cinnamon Teal (<i>Anas cyanoptera</i>) ¹ Eurasian Wigeon (<i>Anas Penelope</i>) ¹ Field Sparrow (<i>Spizella pusilla</i>) Great Blue Heron (<i>Ardea herodias</i>) Killdeer (<i>Charadrius vociferous</i>) Lesser Yellowlegs (<i>Tringa flavipes</i>) ¹ Mallard (<i>Anas platyrhynchos</i>) Mallard (<i>Anas platyrhynchos</i>) ¹ Northern Shoveler (<i>Anas clypeata</i>) ¹ Osprey (<i>Pandoin haliaetus</i>)	Red-tail Hawk (<i>Buteo jamaicensis</i>) Red-winged blackbird (<i>Agelaius phoeniceus</i>) Song sparrow (<i>Melospiza melodia</i>) Spotted sandpiper (<i>Actitis macularia</i>) Tree Swallow (<i>Tachycineta bicolor</i>) ¹ Wood Duck (<i>Aix sponsa</i>) ¹ Yellow-headed blackbird (<i>Xanthocephalus xanthocephalus</i>)
MAMMALS	
Coyote (<i>Canis latrans</i>) Deer (<i>Odocoileus spp.</i>)	Mouse [young] (<i>Peromyscus spp.</i>) ¹ Muskrat (<i>Ondatra zibethicus</i>) ²

Bolded species were observed during 2004 monitoring. All other species were observed during one or more of the previous monitoring years, but not during 2004.

¹ Observed by MDT during spring and/or fall of 2004.

² Observed in side channel by MDT during 2004.

³ Observed within old channel on southern boundary by MDT during spring of 2004.



Painted Turtle



Lesser Yellowlegs

WETLAND VEGETATION

Dominant wetland vegetation

Seven types of wetland communities observed

Type 1- Spike rush/Reed grass (*Eleocharis/Phalaris*)

Type 2- Pondweed/waterweed (*Potamogeton/Elodea*)

Type 3- Reed grass/ willow (*Phalaris/Salix*)

Type 4- Reed grass (*Phalaris*)

Type 5- Rigid Hornwort (*Ceratophyllum*)

Type 6- Rush/spike rush (*Juncus/Eleocharis*)

Type 7- Reed grass/redtop (*Phalaris/Agrostis*)



Spike rush

Dixon Hoskins Landing



Click the icon below for complete monitoring reports for this site (2003 to 2008)

