

STATE	RIGHT OF WAY ID.	SHEET NO.	TOTAL SHEETS
MONTANA	NH 7-1(82)49 F	18	24
PROJECT NUMBER 2015-082			
HAMILTON - VICTOR (HAMILTON - N OF WOODSIDE)			

PARCELS SERVED	SIDE	ROAD APPROACHES				
		PRIVATE			PUBLIC	
		FARM FIELD	RESIDENTIAL	COMMERCIAL		
(1), (2)	(2)	(2)	(2)	SIDE	STATION	
		STATION	STATION	STATION	LT	55+70
					RT	55+70
** 1-60	RT		56+62			
** 1-62	RT		56+62			
** 1-57	LT		56+58			
** 1-59	LT		56+58			
** 1-62	RT			57+27		
** 1-61	LT			57+30		
** 1-65	LT			57+30		
** 1-64	RT			58+12		
** 1-66	RT			58+12		
** 1-65	LT			58+78		
** 1-66	RT			58+78		

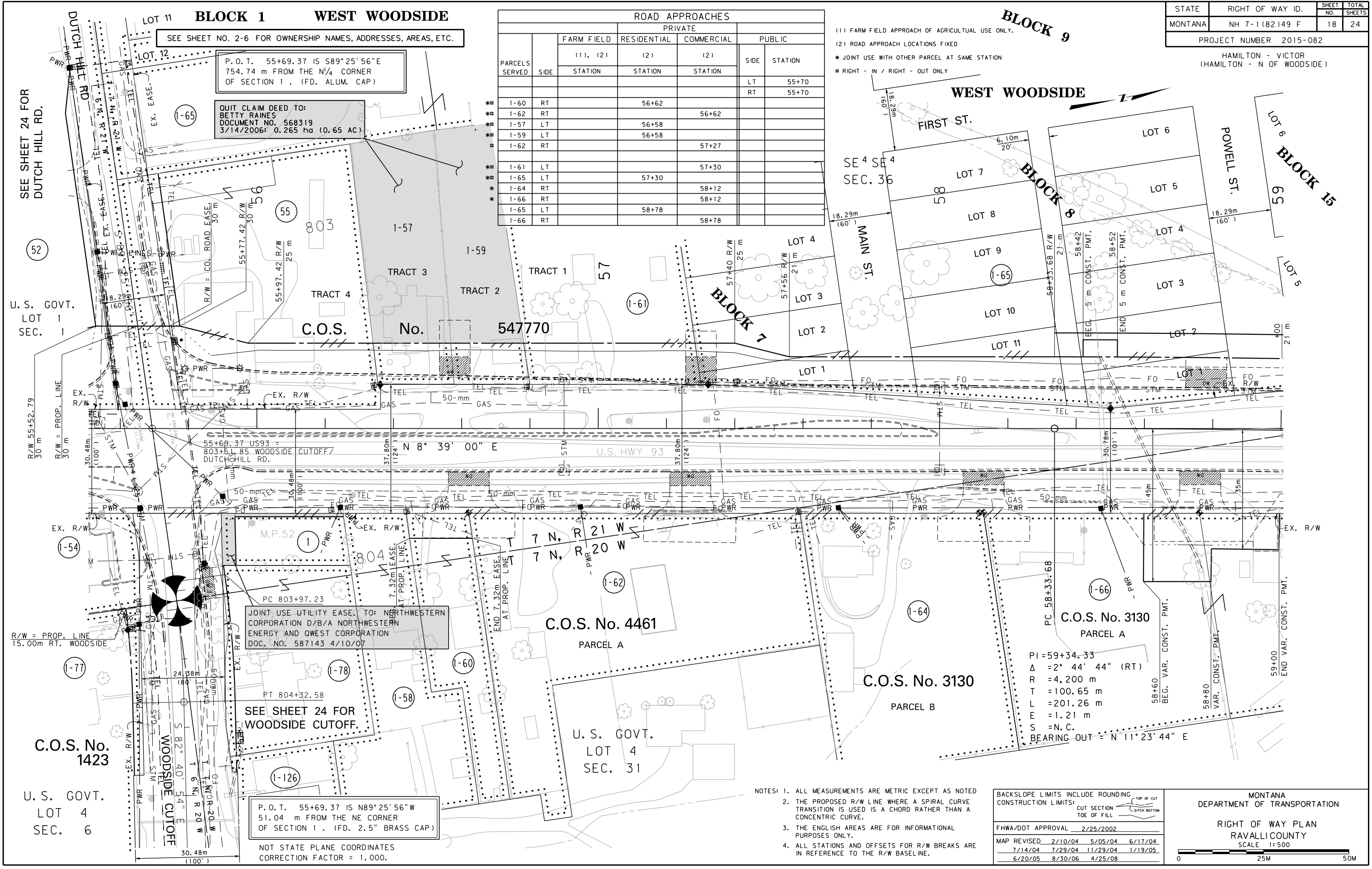
- (1) FARM FIELD APPROACH OF AGRICULTURAL USE ONLY.  
(2) ROAD APPROACH LOCATIONS FIXED  
\* JOINT USE WITH OTHER PARCEL AT SAME STATION  
# RIGHT - IN / RIGHT - OUT ONLY

MDTA MONTANA DEPARTMENT OF TRANSPORTATION  
MONTANA CADD

WGM GROUP, INC.

RDROW

c:\dgm\0015\rop\inz04.dgn  
12/5/2011  
11:27:46 AM  
CPS - U1757



SEE SHEET NO. 2-6 FOR OWNERSHIP NAMES, ADDRESSES, AREAS, ETC.  
P.O.T. 55+69.37 IS S89°25'56"E  
754.74 m FROM THE N¼ CORNER  
OF SECTION 1. (FD. ALUM. CAP)

QUIT CLAIM DEED TO:  
BETTY RAINES  
DOCUMENT NO. 568319  
3/14/2006: 0.265 ha (0.65 AC)

JOINT-USE UTILITY EASE, TO:  
NORTHWESTERN CORPORATION D/B/A NORTHWESTERN ENERGY AND QWEST CORPORATION  
DOC. NO. 587143 4/10/07

SEE SHEET 24 FOR  
WOODSIDE CUTOFF.

P.O.T. 55+69.37 IS N89°25'56"W  
51.04 m FROM THE NE CORNER  
OF SECTION 1. (FD. 2.5" BRASS CAP)

NOT STATE PLANE COORDINATES  
CORRECTION FACTOR = 1.000.

- NOTES: 1. ALL MEASUREMENTS ARE METRIC EXCEPT AS NOTED  
2. THE PROPOSED R/W LINE WHERE A SPIRAL CURVE TRANSITION IS USED IS A CHORD RATHER THAN A CONCENTRIC CURVE.  
3. THE ENGLISH AREAS ARE FOR INFORMATIONAL PURPOSES ONLY.  
4. ALL STATIONS AND OFFSETS FOR R/W BREAKS ARE IN REFERENCE TO THE R/W BASELINE.

BACKSLOPE LIMITS INCLUDE ROUNDING	CONSTRUCTION LIMITS:	TOP OF CUT	DITCH BOTTOM
		CUT SECTION	TOE OF FILL
FHWA/DOT APPROVAL 2/25/2002			
MAP REVISED	2/10/04	5/05/04	6/17/04
	7/14/04	7/29/04	11/29/04
	6/20/05	8/30/06	4/25/08

MONTANA DEPARTMENT OF TRANSPORTATION  
RIGHT OF WAY PLAN  
RAVALLI COUNTY  
SCALE 1:500